

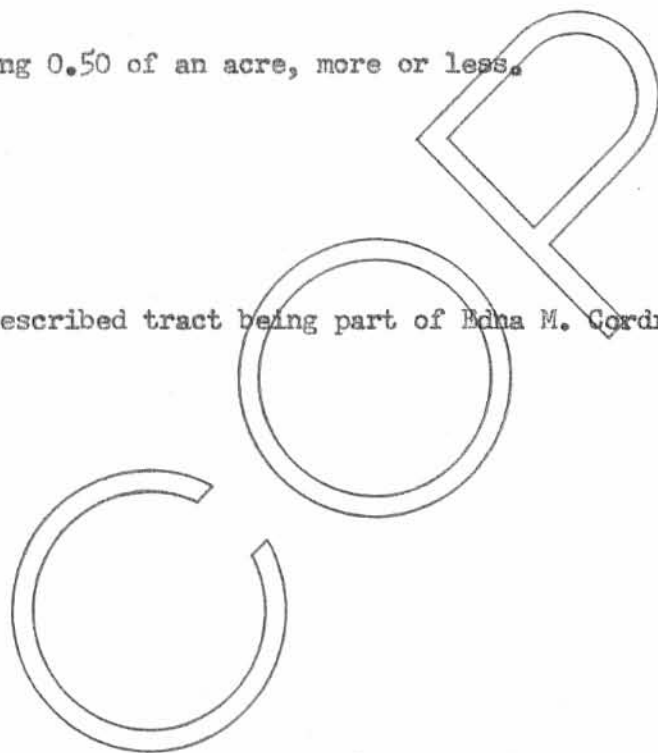
CORDREY SURVEY
V.M.S. 9947 * RICHLAND TOWNSHIP
April 12, 1956

The following described Real Estate situated in Richland Township, Logan County, Ohio and being part of Virginia Military Survey 9947, and more particularly described as follows:

Beginning at a point in the center of U. S. Route No. 33 at the northeast corner of Chester L. Breakfield's 27.66 acre tract, said point being at Station 439 + 09.2 as shown on Plan W-1 on file in the Logan County Engineer's Office; Thence with said Breakfield's north line S.81°-31' W. 295.40 feet to a pipe; Thence N.37°-18' E. 211.70 feet to the center of said U. S. Route No. 33, passing a stake at 181.70 feet; Thence with said center line S.52°-42' E. 206.00 feet to the place of beginning,

Containing 0.50 of an acre, more or less.

The above described tract being part of Edna M. Cordrey's 85.66 acre tract.



INDEXED ON MAP

3338 ID

INDEXED ON MAP

on Plat.

Cordrey Survey
V.M.S. 9947
Richland Twp

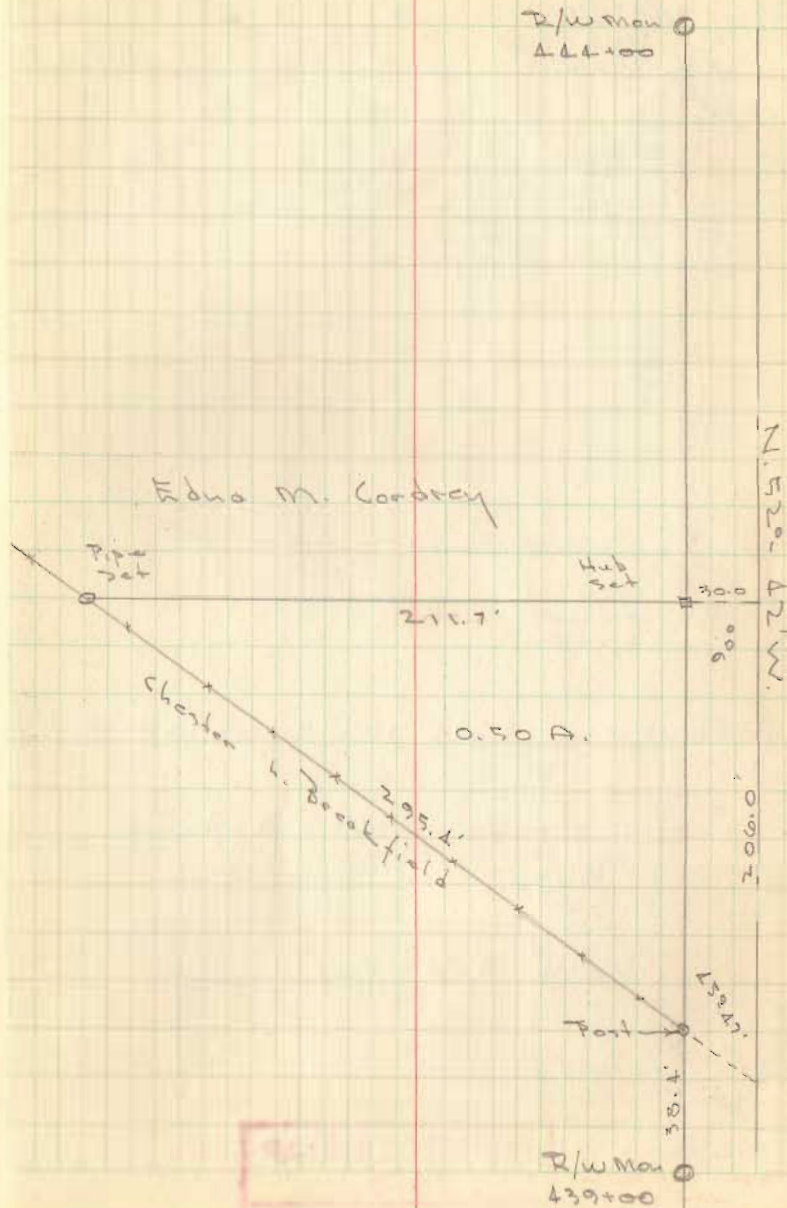
See Plan W-1 for R/W
U.S.R # 33

INDEXED ON MAP
3338

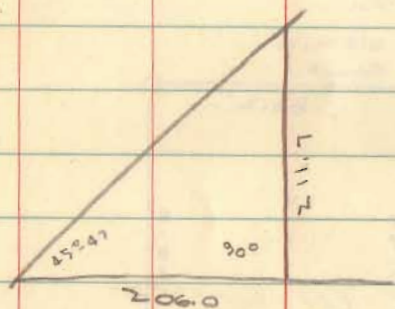
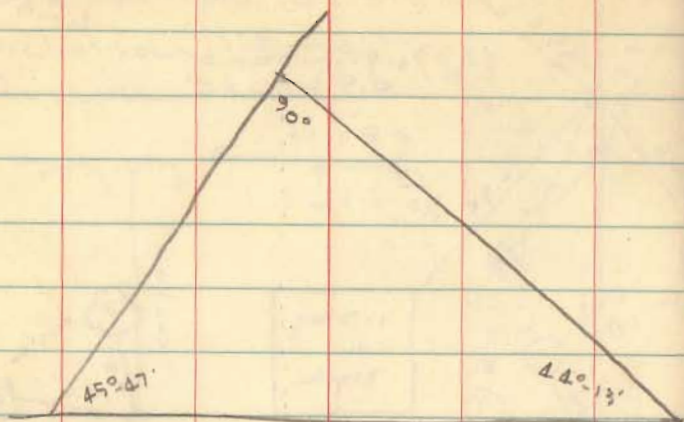
D. Dodson
A. Conkle

April 12, 1956

63



INDEXED ON MAP
3338



206.00
19.66

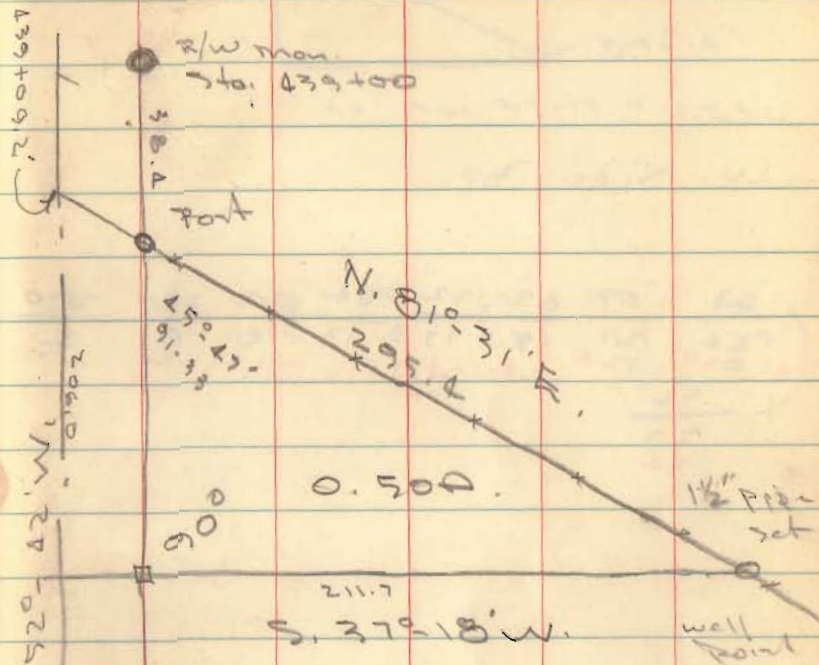
186.34

INDEXED ON MAP
3338

89-60
45-87

44-13

76



Cordery Survey
Richland Tex
4/12/56

R/W Mon
444+00

See Plan W-1
for U.S.P. 33