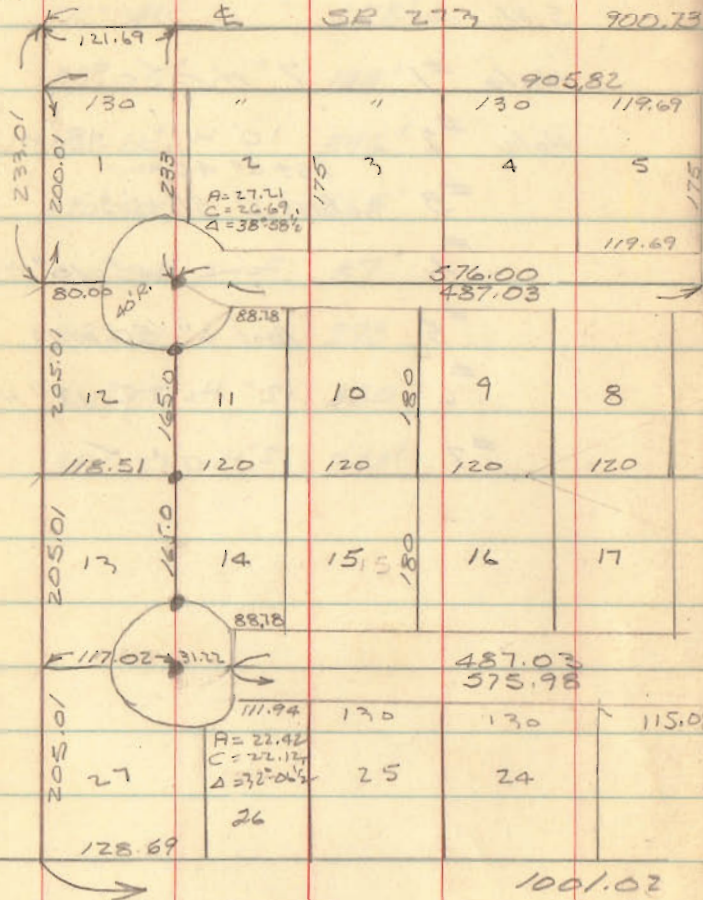


NORTH Fork JORD.

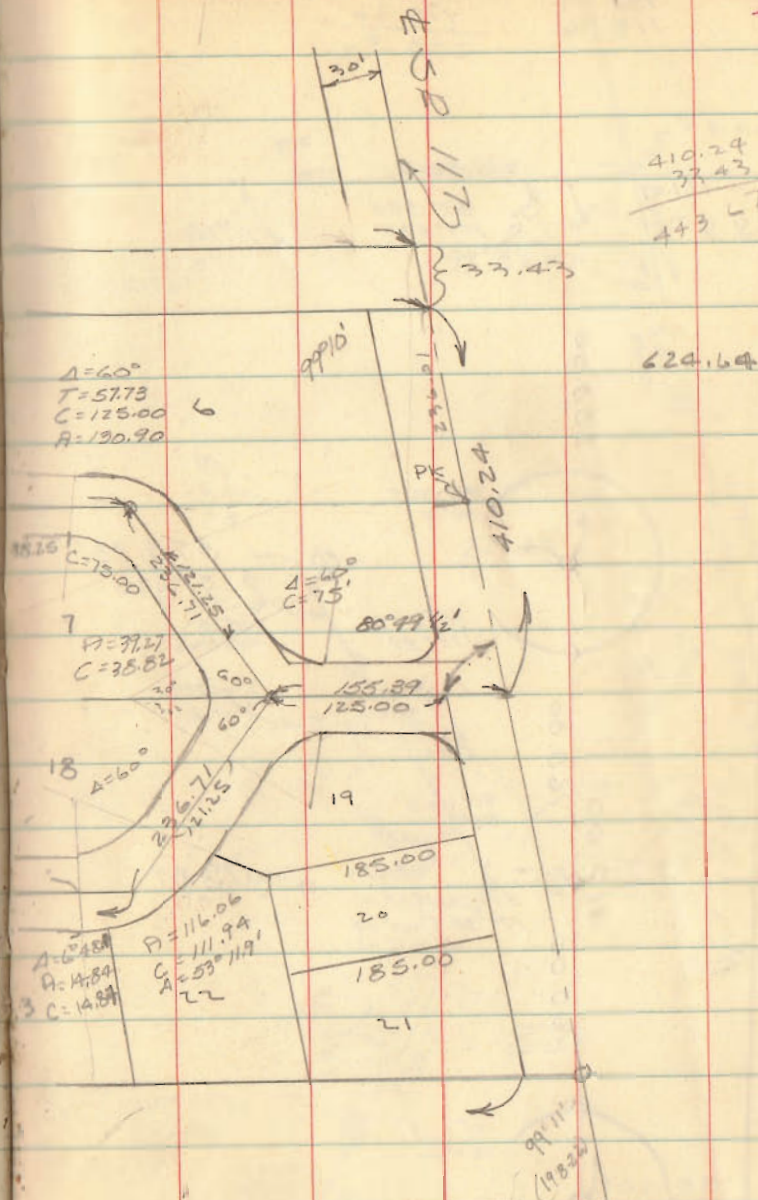
PK Fd 949.37 meas



INDEXED ON MAP  
3934

9.25-65

36

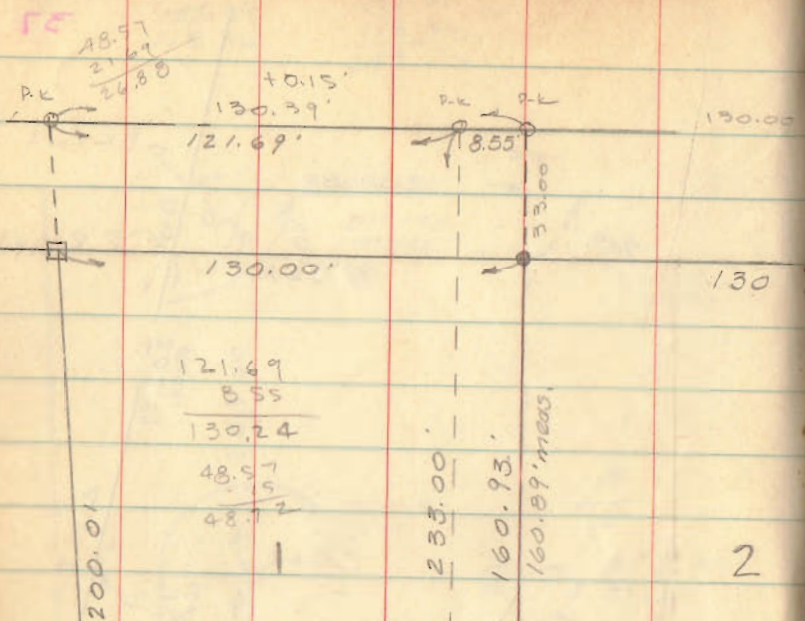


410.24  
37.43  
443.67

624.64

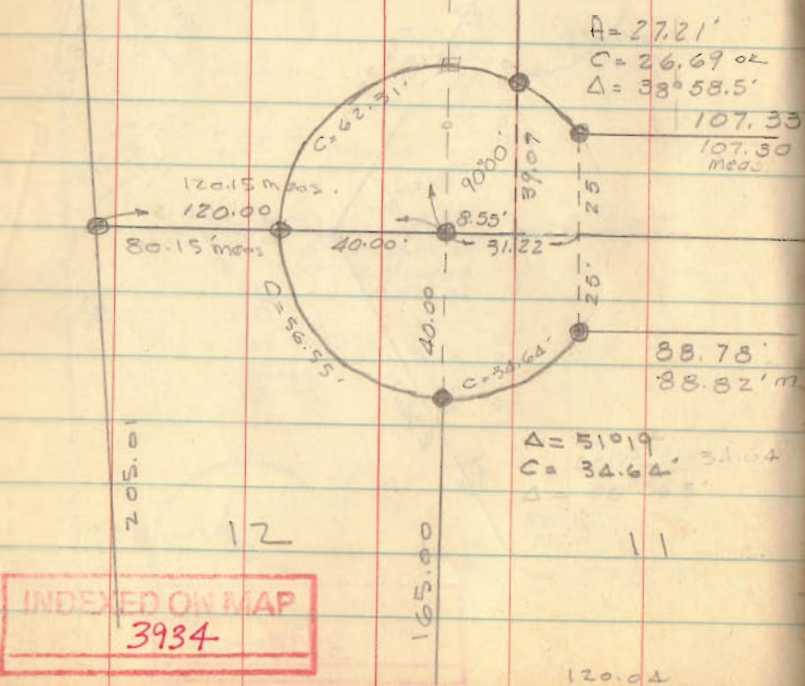
99.11  
190.22



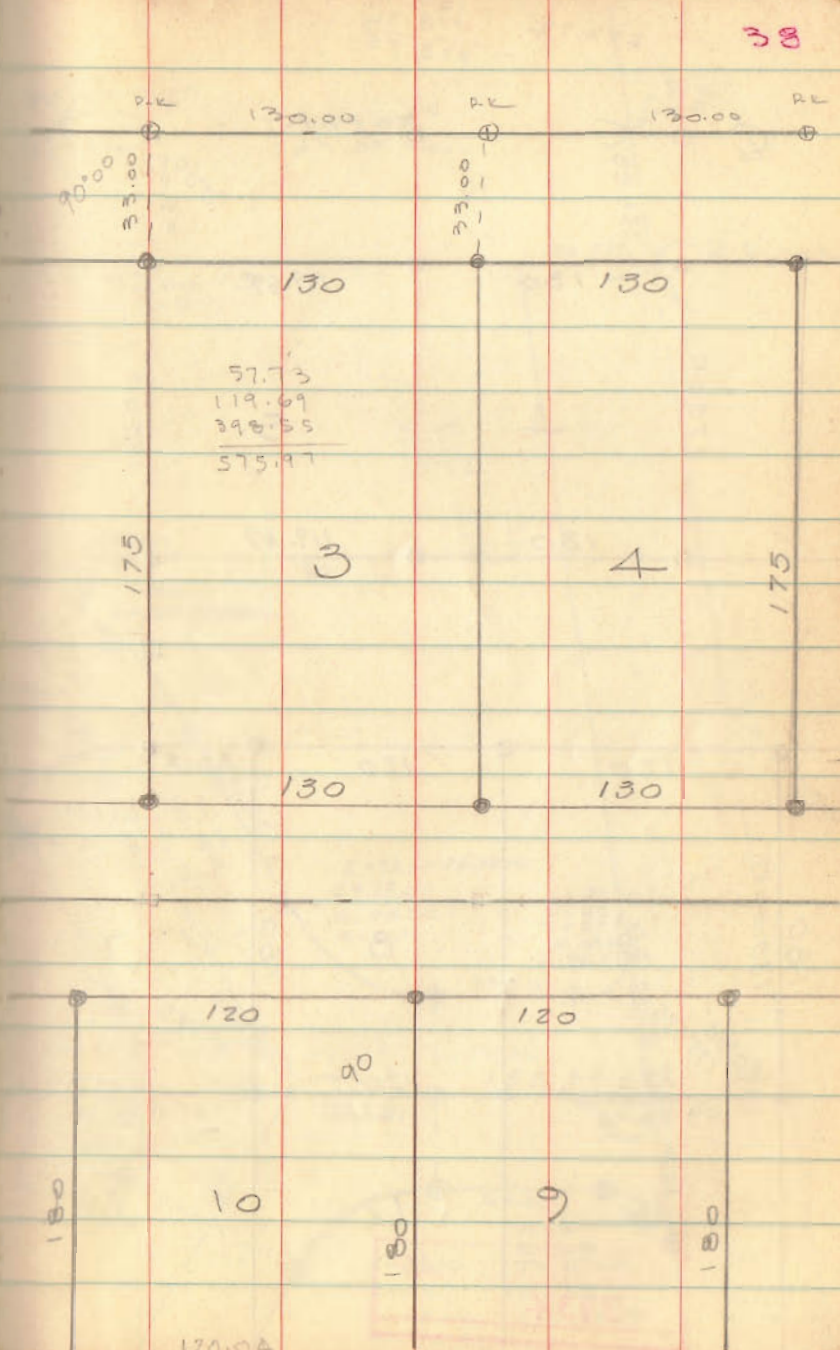


121.69  
8.55  
-----  
130.24  
48.57  
5  
-----  
48.12

2



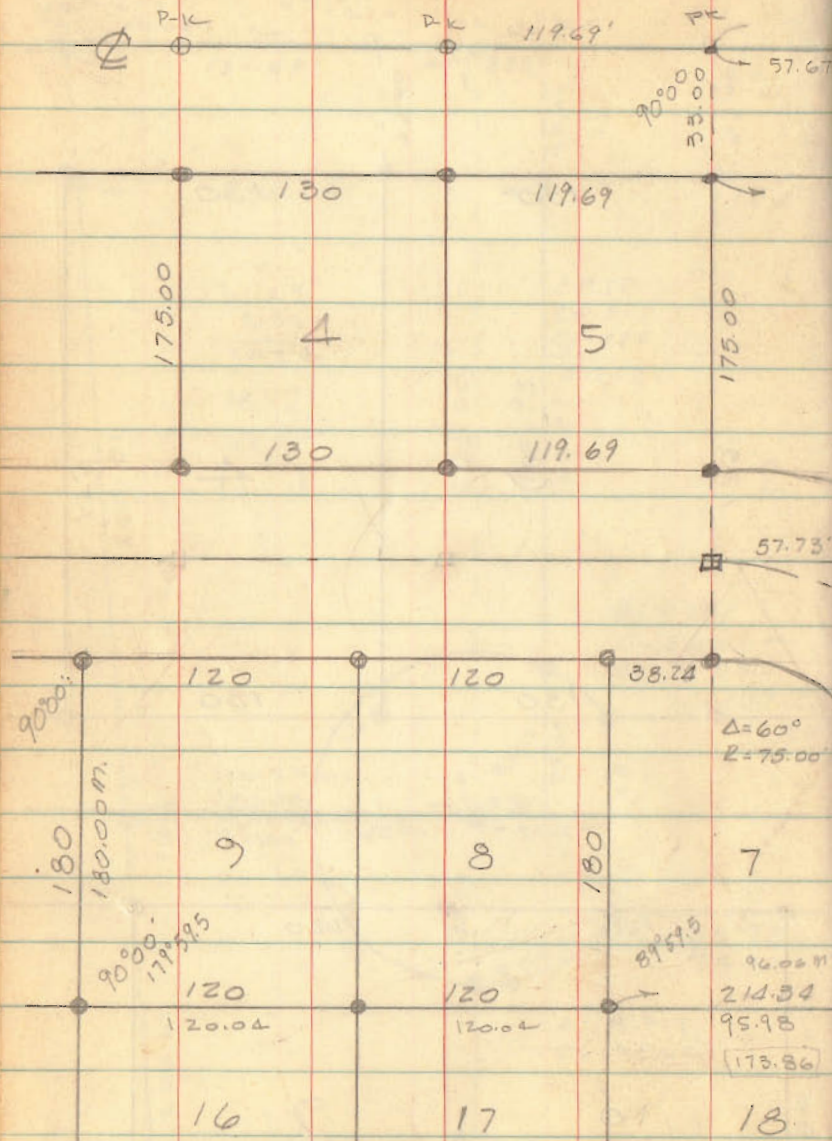
INDEXED ON MAP  
3934



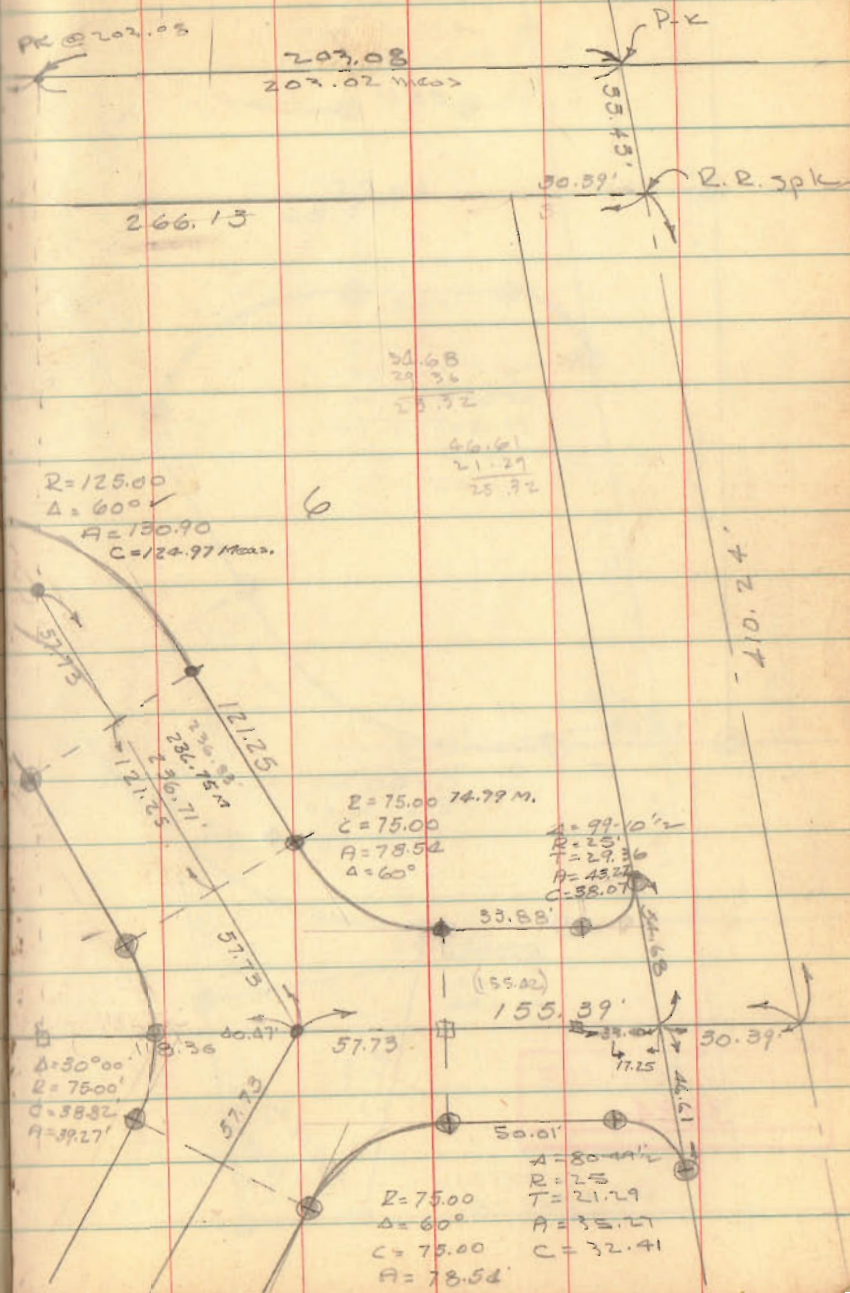
INDEXED ON MAP  
3934

273.72

155.79  
178.36  
273.75



INDEXED ON MAP  
3934



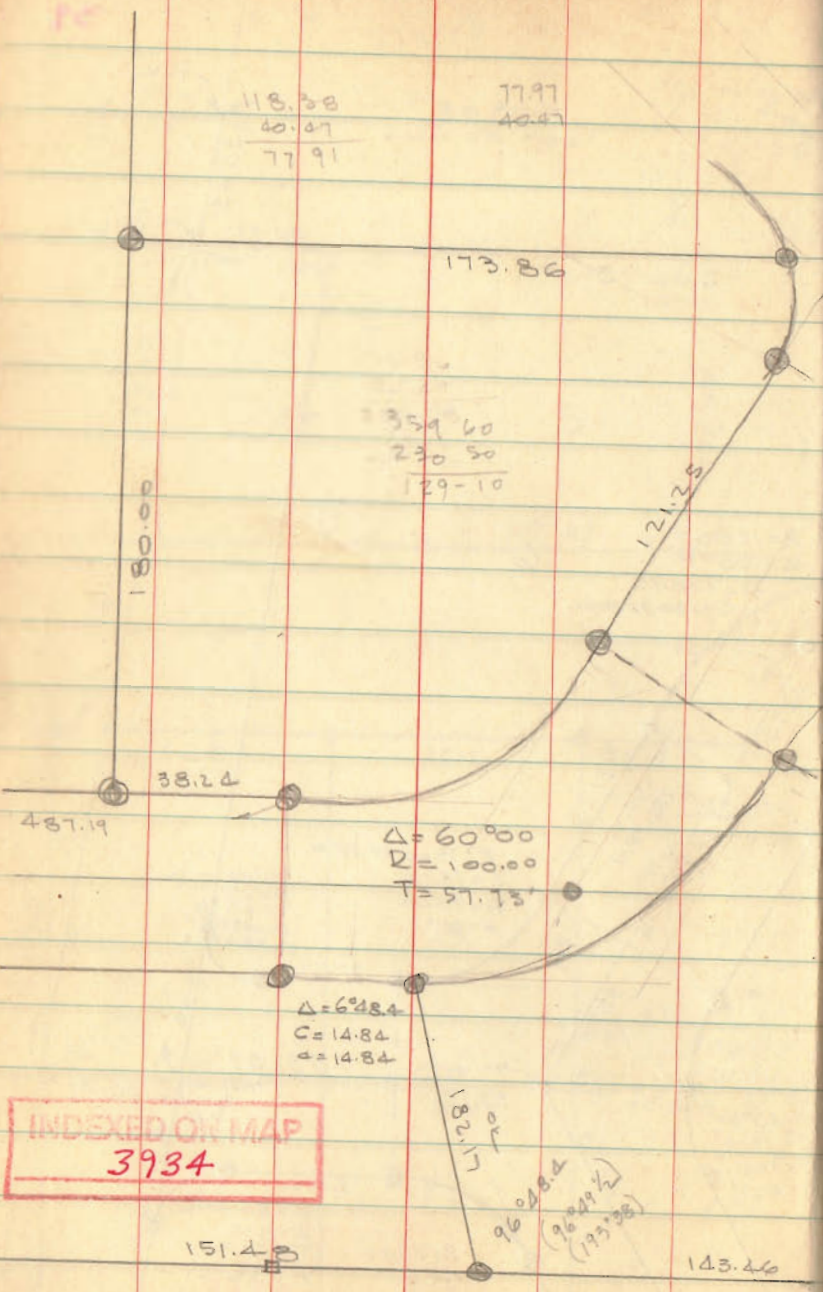
118.38  
40.47  
-----  
77.91

77.97  
40.47

359.60  
230.50  
-----  
129.10

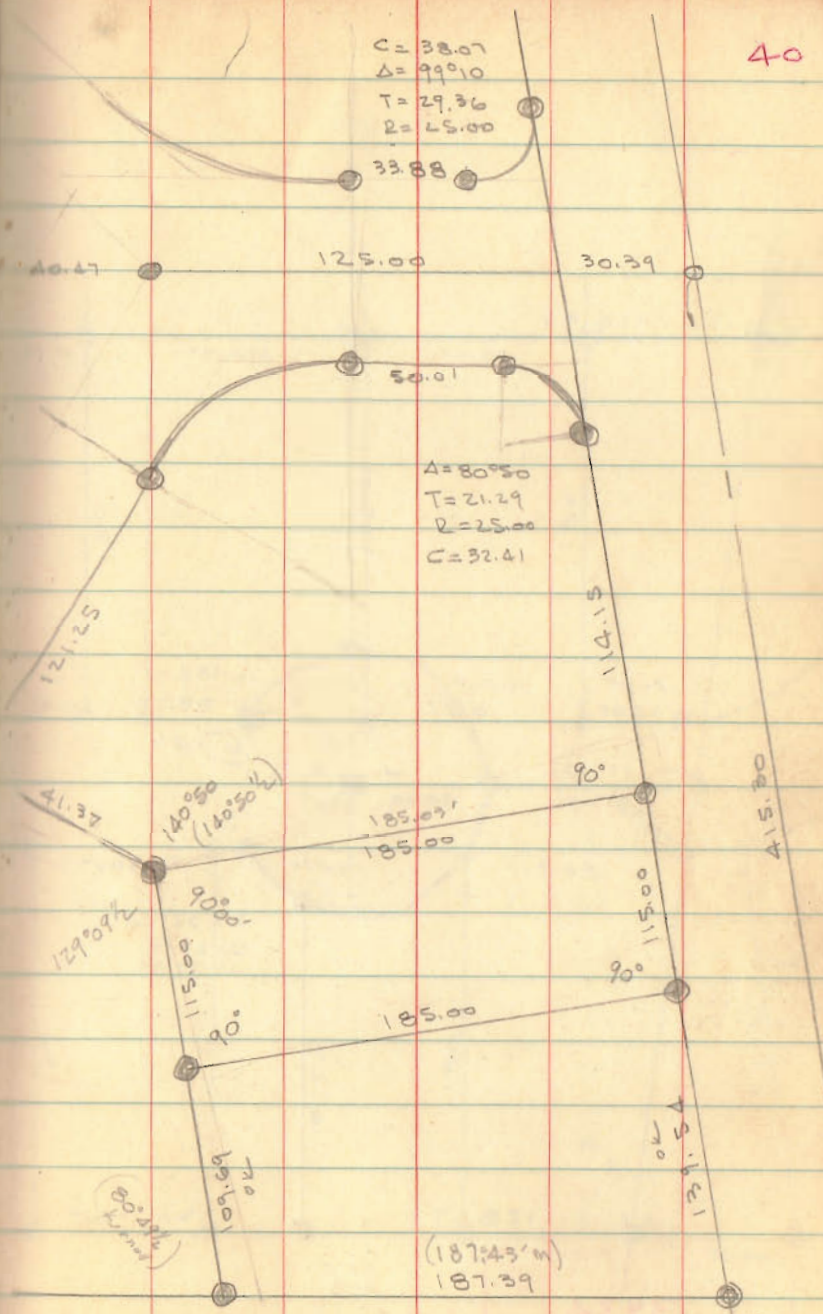
$\Delta = 60^{\circ}00'$   
 $R = 100.00$   
 $T = 57.15'$

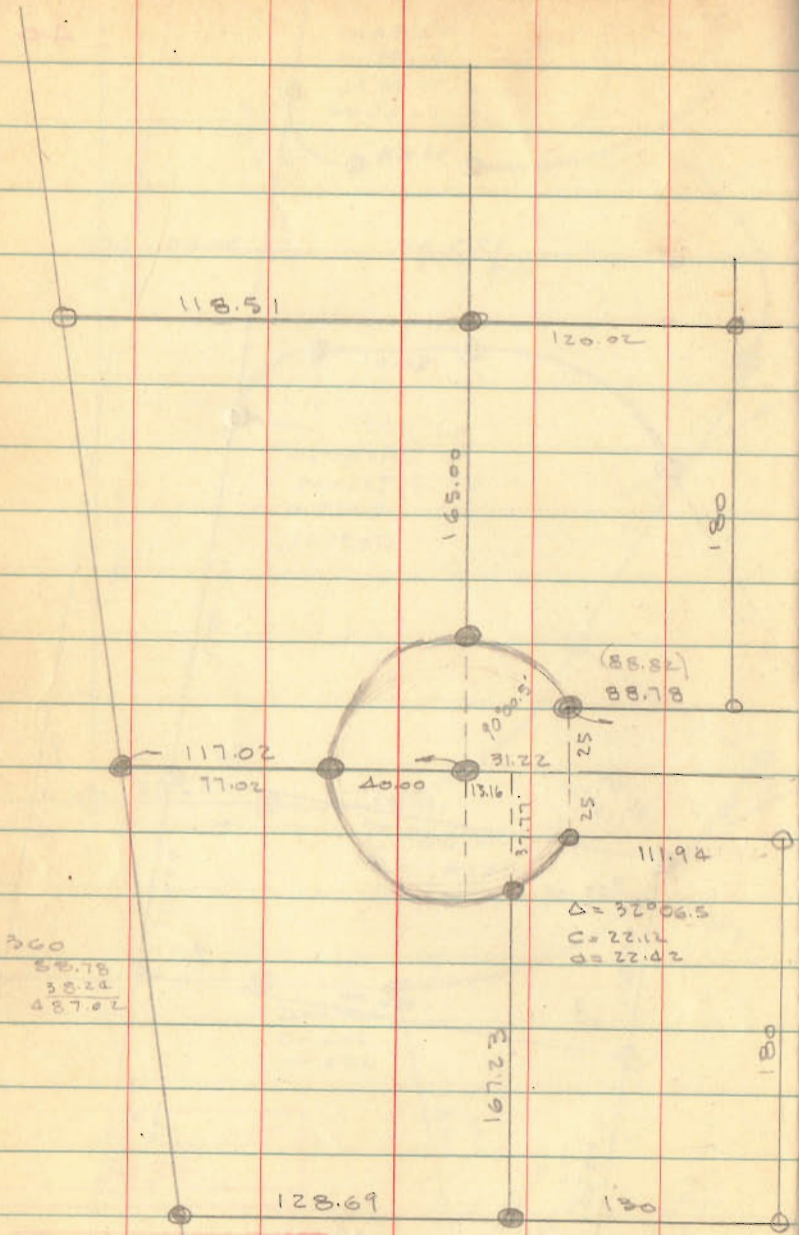
$\Delta = 6^{\circ}28.4'$   
 $C = 14.84$   
 $d = 14.84$



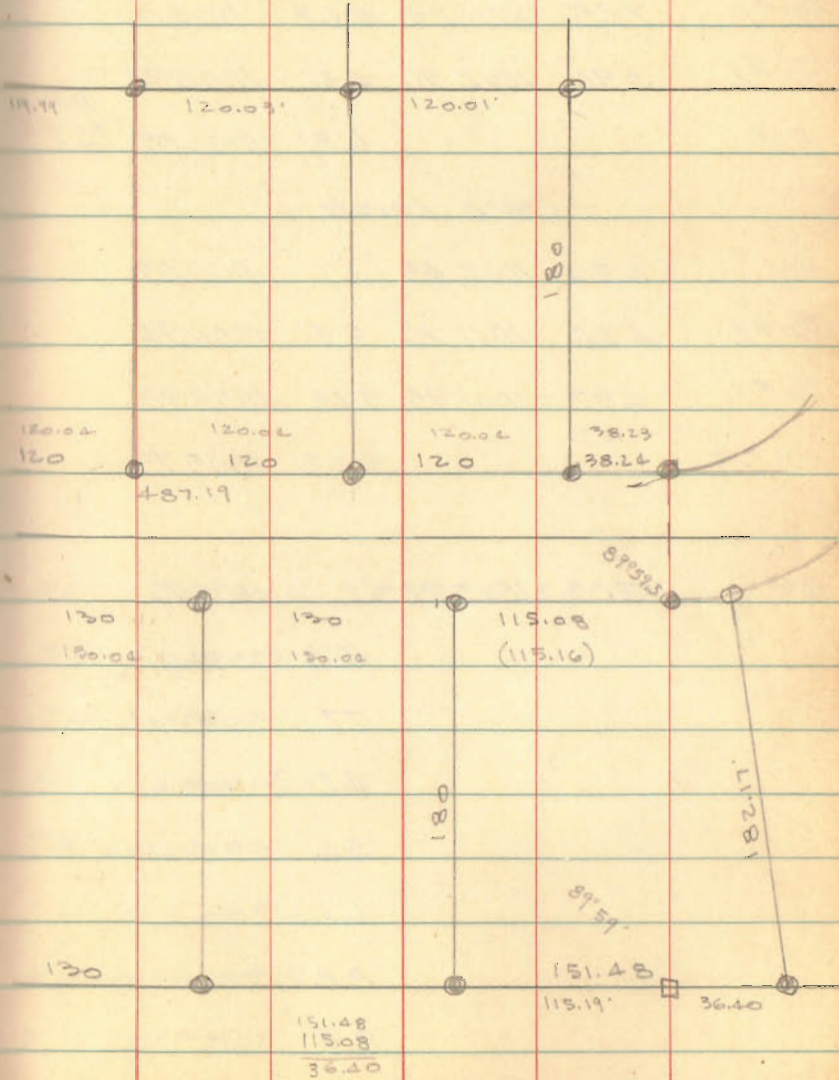
$C = 38.07$   
 $\Delta = 99^{\circ}10'$   
 $T = 29.36$   
 $R = 25.00$

$\Delta = 80^{\circ}50'$   
 $T = 21.29$   
 $R = 25.00$   
 $C = 32.41$





INDEXED ON MAP  
3934



WILLIAMS SURVEY  
Richland Twp

S.R. 273  
 PI  
 24+49.4  
 1" pipe found

See Plan L-21 Sheet  $\frac{4}{4}$  for S.R. 117

See F.B. 607, pg. 54 for S.R. 273

Deco Vol. 238/273

Vol. 127/233

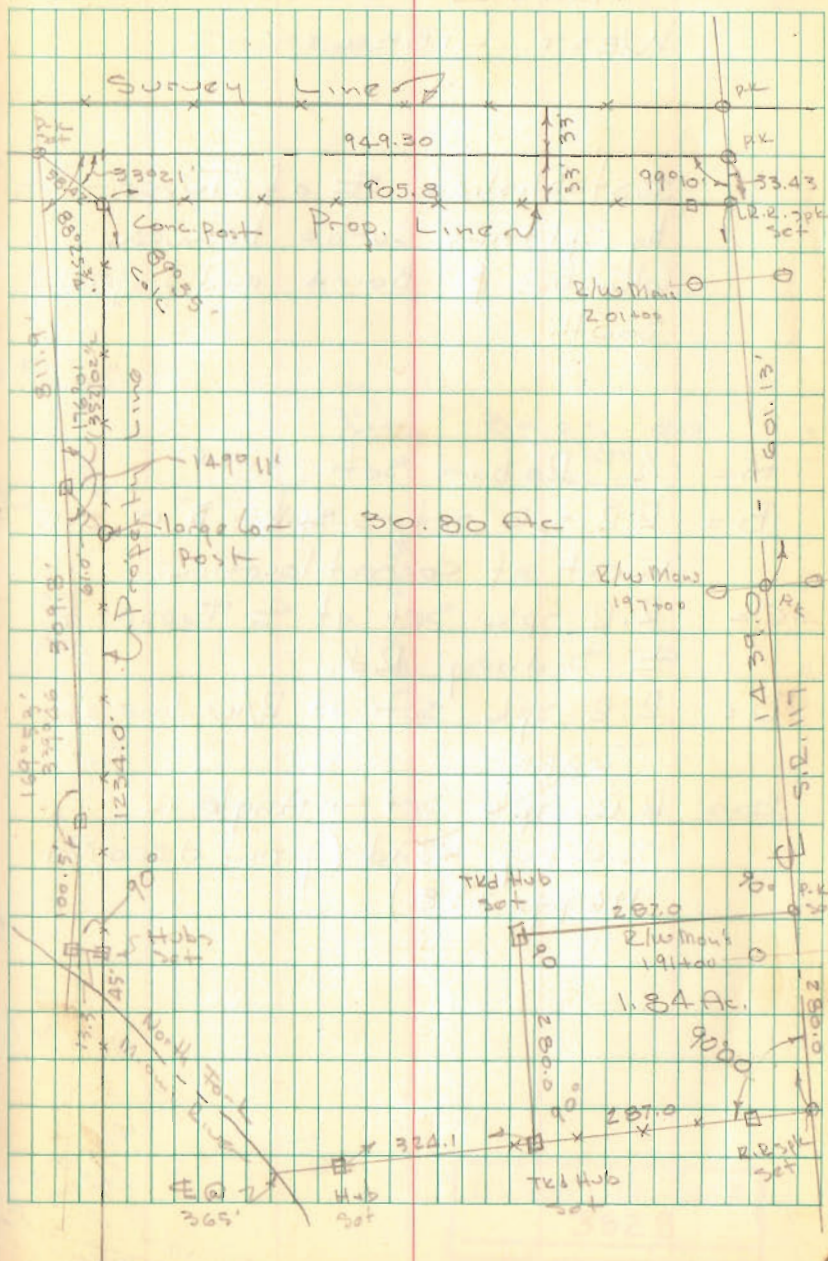
Vol. 155/428

Vol. 69/216

INDEXED ON MAP  
3934

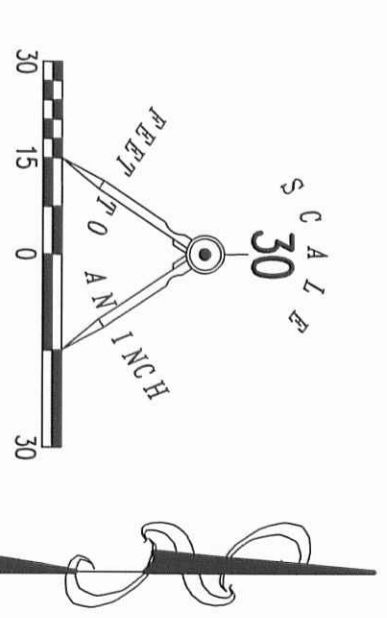
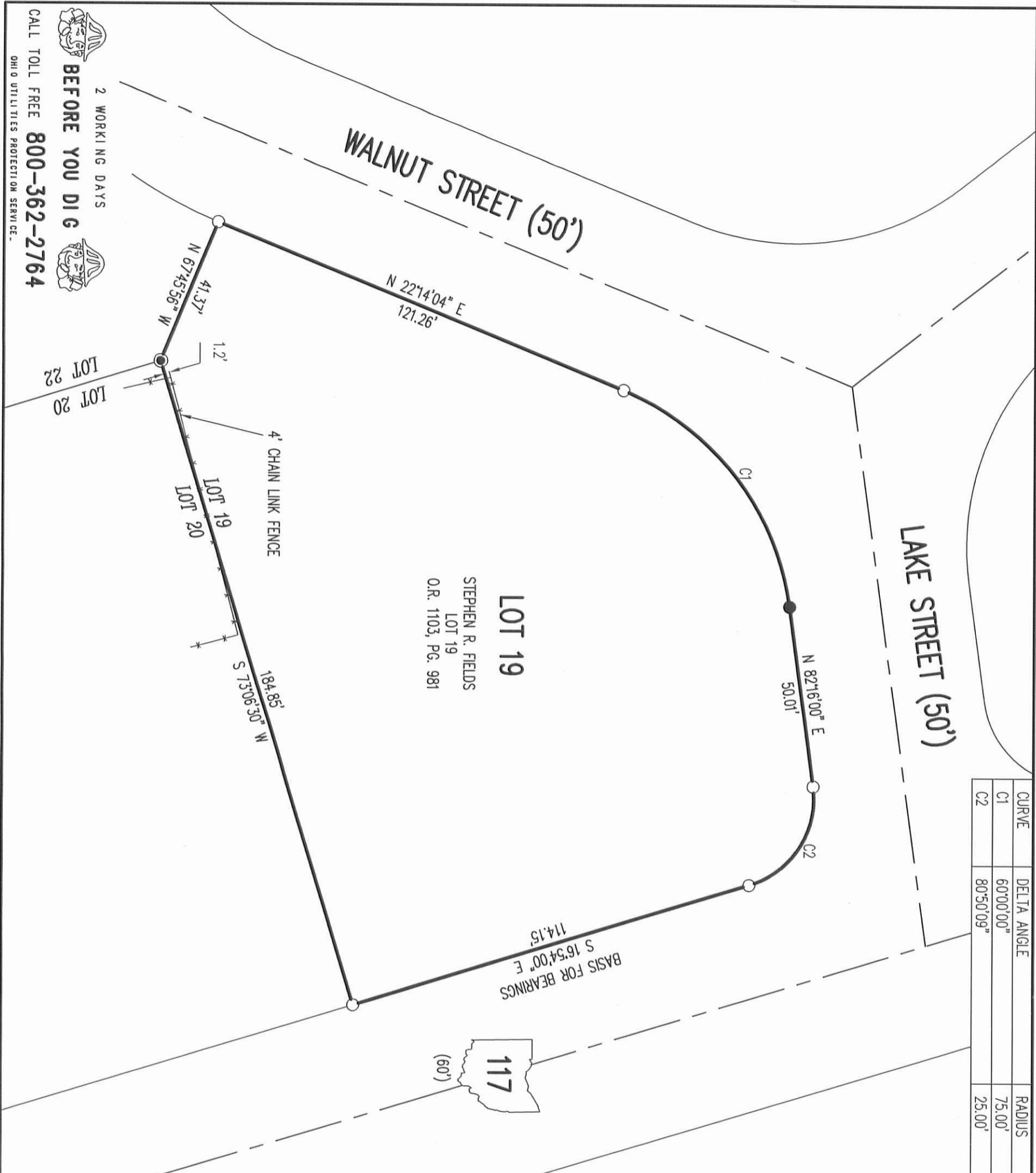
Dodson  
J. Whitlow

June 26, 1965  
80° 14





CURVE	DELTA ANGLE	RADIUS	ARC LENGTH	TANGENT	CHORD BEARING	CHORD LENGTH
C1	60°00'00"	75.00'	78.54'	43.30'	N 52°16'00" E	75.00'
C2	80°50'09"	25.00'	35.27'	21.29'	S 57°07'10" E	32.42'



- LEGEND
- 5/8 INCH IRON ROD SET WITH A PLASTIC I.D. CAP STAMPED "LSM7437"
  - 5/8 INCH IRON ROD FOUND
  - MAG NAIL SET

RETRACMENT SURVEY OF  
LOT 19  
NORTH FORK SUBDIVISION  
PLAT CABINET A, SLIDE 497  
VIRGINIA MILITARY SURVEY 10503  
RICHLAND TOWNSHIP  
LOGAN COUNTY, OHIO

SURVEYED BY:

*William K. Bruce*

WILLIAM K. BRUCE  
PROFESSIONAL SURVEYOR 7437  
OCTOBER 29, 2013



COPYRIGHT 2013 BY:  
LEE SURVEYING & MAPPING CO., INC.

117 North Madriver Street  
BELLEFONTAINE, OHIO 43311  
(937) 593-7335  
WWW.LSMINC.US  
surveys@lsminc.us

ADW D0913 56220913 L-5622-3

2 WORKING DAYS  
BEFORE YOU DIG

CALL TOLL FREE 800-362-2764  
OHIO UTILITIES PROTECTION SERVICE

INDEXED ON MAP  
3934 14P