

REC'D 9-6-06 SMY OK

# Lee Surveying and Mapping Co., Inc.

Land Surveys • Topography • Subdivisions • Construction Layout

117 N. Madriver St.  
Bellefontaine OH 43311



Phone: (937) 593-7335  
Fax: (937) 593-7444

**1975-2005 - 30 YEARS OF EXCELLENCE**

**YODER  
1.603 ACRES**

Lying in Virginia Military Survey 9952, Richland Township, Logan County, Ohio.

Being out of the Willie M. Yoder and Leanna Yoder 36.51 acre tract as deeded and described in Vol. 364, Page 582 of the Logan County Records of Deeds and being more particularly described as follows:

Commencing at a 1 inch iron rod found at angle point station 158+51.98 (Logan County Engineer's Field Book 707, Page 17) on the center-line of County Highway 101.

THENCE, with the center-line of County Highway 101 (60 feet wide), S 43°-00'-00"W, a distance of 1017.03 feet to a MAG nail set at the TRUE POINT OF BEGINNING.

THENCE, S 45°-00'-35"E, a distance of 233.34 feet to a point in a large excavation hole, passing a 5/8 inch iron rod set at 30.02 feet.

THENCE, S 44°-52'-09"W, a distance of 231.74 feet to a 5/8 inch iron rod set, passing a 5/8 inch iron rod set at 14.00 feet.

THENCE, N 78°-42'-10"W, a distance of 265.21 feet to a MAG nail set on the center-line of County Highway 101.

THENCE, with the center-line of County Highway 101, N 43°-00'-00"E, a distance of 379.09 feet to the point of beginning.

Containing 1.603 acres, of which 0.254 acre is within the highway right-of-way.

The basis for bearings is the center-line of County Highway 101, being S 43°-00'-00"W, and all other bearings are from angles and distances measured in a field survey by Lee Surveying and Mapping Co., Inc. on September 1, 2006.

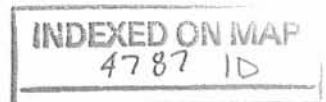


ORIGINAL STAMP IN GREEN

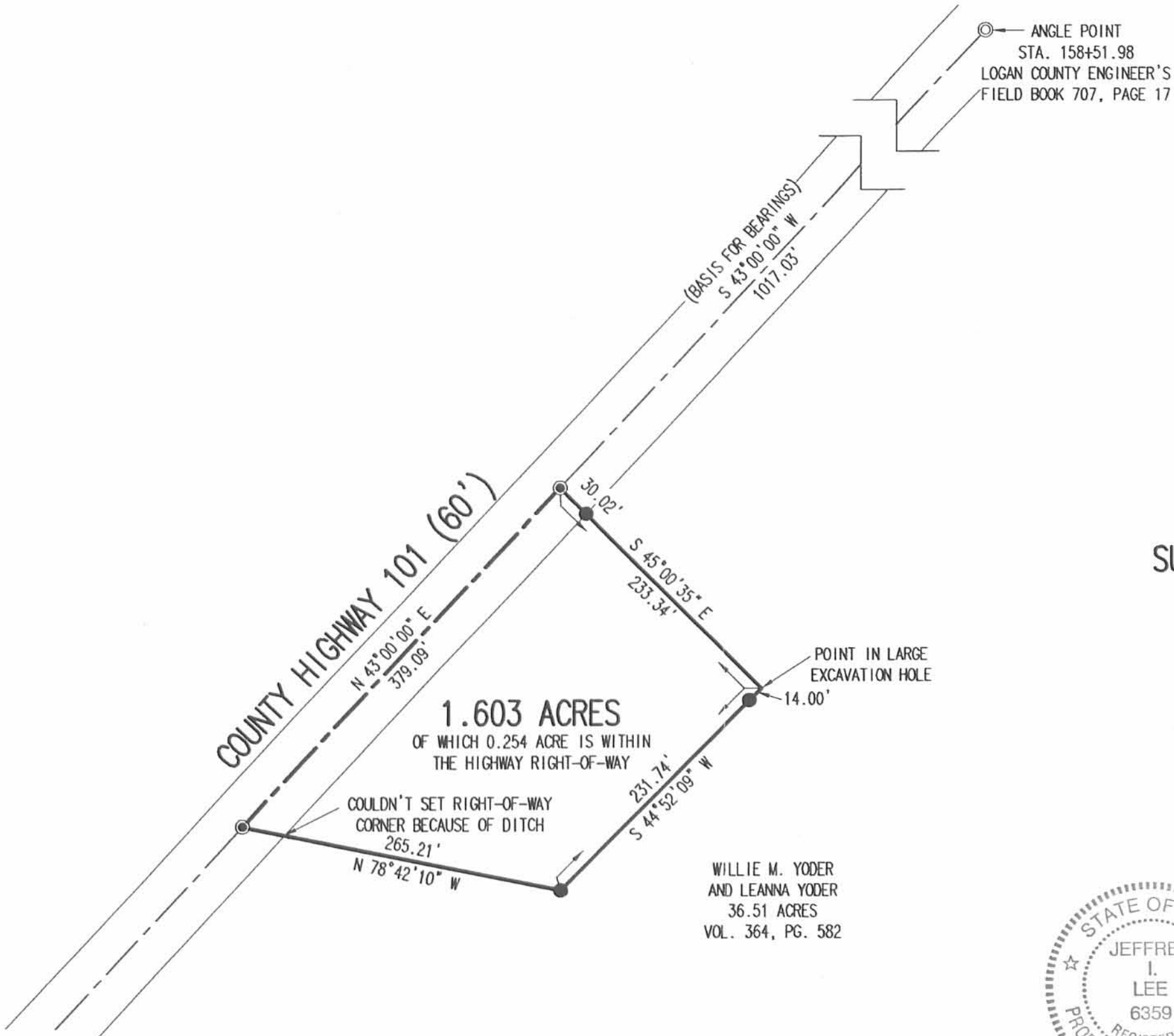
Description prepared by:

A handwritten signature in black ink, appearing to read 'Jeffrey I. Lee'.  
Jeffrey I. Lee  
Professional Surveyor 6359  
September 1, 2006

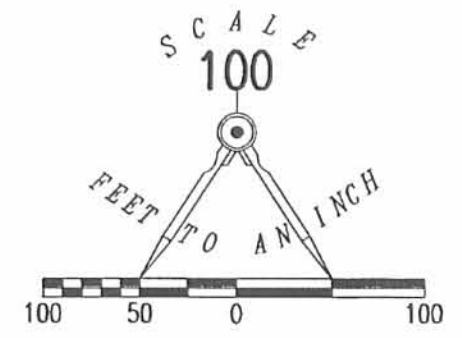
4304086



REC'D 9-16-06 SWY OK



ANGLE POINT  
 STA. 158+51.98  
 LOGAN COUNTY ENGINEER'S  
 FIELD BOOK 707, PAGE 17



- LEGEND:
- ⊙ 1 INCH IRON ROD FOUND
  - MAG NAIL SET
  - 5/8 INCH IRON ROD SET

SURVEY OF 1.603 ACRES OUT OF THE  
 WILLIE M. YODER  
 AND LEANNA YODER  
 36.51 ACRE TRACT  
 VOLUME 364, PAGE 582  
 VIRGINIA MILITARY SURVEY 9952  
 RICHLAND TOWNSHIP  
 LOGAN COUNTY, OHIO

1.603 ACRES  
 OF WHICH 0.254 ACRE IS WITHIN  
 THE HIGHWAY RIGHT-OF-WAY

WILLIE M. YODER  
 AND LEANNA YODER  
 36.51 ACRES  
 VOL. 364, PG. 582

SURVEYED BY:



*Jeffrey I. Lee*  
 JEFFREY I. LEE  
 PROFESSIONAL SURVEYOR 6359  
 SEPTEMBER 1, 2006

COPYRIGHT 2006 BY:  
 LEE SURVEYING & MAPPING CO., INC.  
 117 North Madriver Street  
 BELLEFONTAINE, OHIO 43311  
 (937) 593-7335

KSR D0906 4304086 L-4304-3

2 WORKING DAYS  
**BEFORE YOU DIG**  
 CALL TOLL FREE **800-362-2764**  
 OHIO UTILITIES PROTECTION SERVICE.

INDEXED ON MAP  
 4787 IP

Received 4-12-90

OK

**LESLIE H. GEESLIN**  
REGISTERED SURVEYOR NO. 5248  
P. O. BOX 274  
RUSHSVLVANIA, OHIO 43347

TELEPHONE: (513) 468-2793  
GILLESPIE SURVEY

April 12, 1990

The following described real estate situated in the State of Ohio, County of Logan, Township of Richland, being part of Virginia Military Survey 9952 and more particularly described as follows:

Beginning at a 5/8 inch iron bar found in the centerline of County Highway 101 at the northwest corner of Donna A. Gillespie's 2.43 acre tract as described in O. R. Vol. 91 Page 536.

Thence with said centerline N. 43° 00' 00" E. 166.00 feet to a 5/8 inch iron bar set.

Thence S. 54° 27' 23" E. 608.30 feet to a 5/8 inch iron bar set in the north line of William Shields' 53.38 acre tract as described in D. B. Vol. 337 Page 291, passing a 5/8 inch iron bar set at 30.00 feet.

Thence with said Shields' north line S. 83° 02' 04" W. 243.58 feet to a 5/8 inch iron bar found at the northeast corner of said Gillespie Tract.

Thence with said Donna Gillespie's north line N. 54° 27' 23" W. 450.28 feet to the place of beginning.

Containing 2.000 acres more or less.

The above described 2.000 acre tract being on the south side of Willie M. Yoder's 36.51 acre tract as described in D. B. Vol. 364 Page 582.

Bearings are based on the bearing of C. H. 101 as taken from O. R. Vol. 91 Page 536 in this field survey completed by Leslie H. Geeslin; Reg. Surveyor 5248.

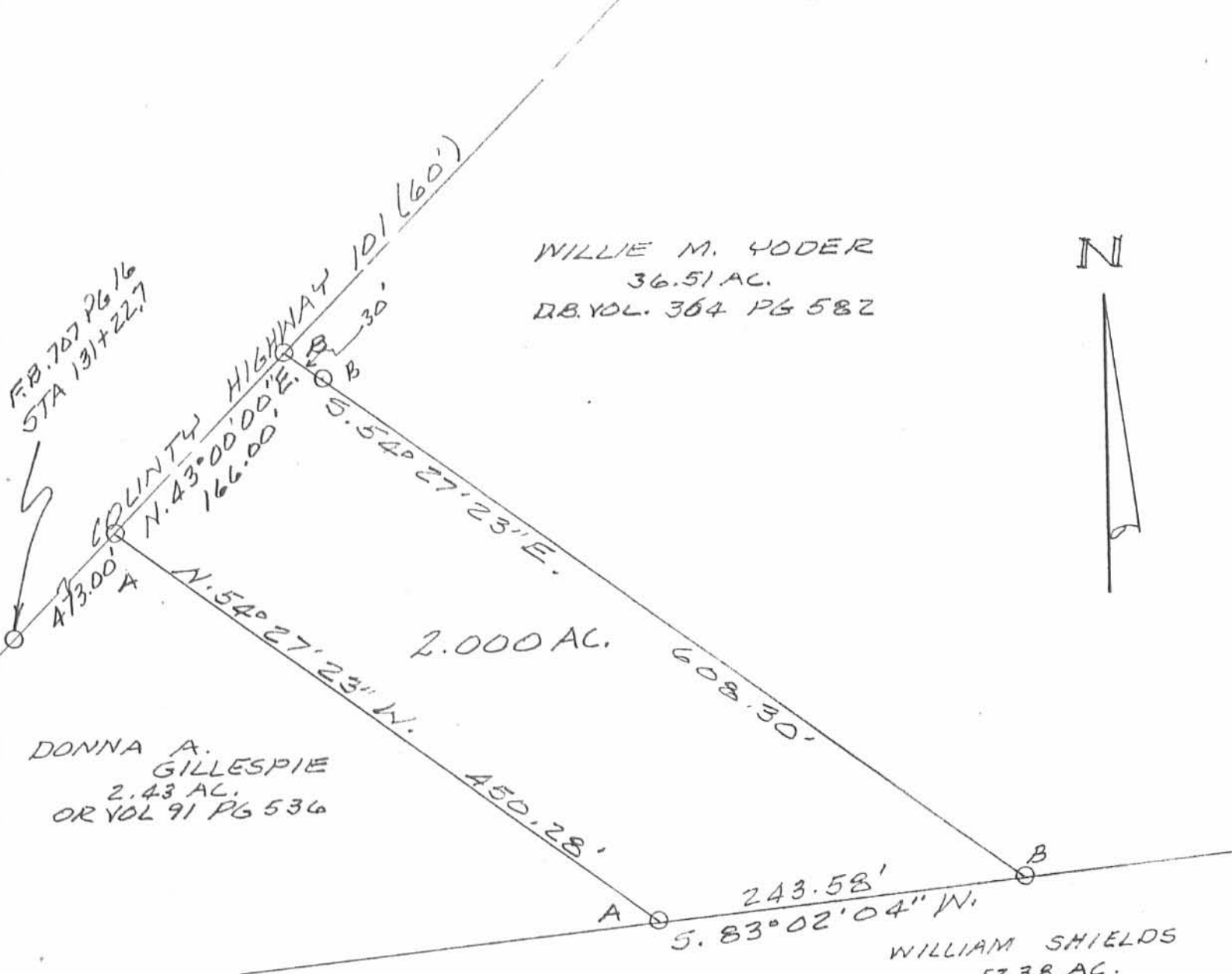
The centerline of C. H. 101 was established from F. B. 707 Page 16.

INDEXED ON MAP  
4787 2D



*Leslie H. Geeslin*

FB. 707 PG 16  
STA 131+22.7



WILLIE M. YODER  
36.51 AC.  
DB VOL. 364 PG 582



DONNA A. GILLESPIE  
2.43 AC.  
OR VOL 91 PG 536

WILLIAM SHIELDS  
53.38 AC.  
DB VOL 337 PG 291

SURVEY OF 2.00 AC. TRACT  
IN V.M.S. 9952, RICHLAND TOWN-  
SHIP, LOGAN COUNTY, OHIO FOR  
PAUL GILLESPIE.  
APRIL 12, 1990  
SCALE: 1"=100'

LEGEND:  
A = 5/8 INCH IRON BAR FD.  
B = 5/8 INCH IRON BAR SET



INDEXED ON MAP  
4787 2P

*Leslie H. Geeslin*  
LESLIE H. GEESLIN  
RUSHSVLVANIA, OHIO  
PH 513-468-2793

Carver to Crapnell

February 1971

Being situated in Richland Township, Logan County, Ohio; and being a part of V.M.S. 9952.

Beginning at an iron in the center of County Road 101 at the northwest corner of a 38.38 acre tract. Said beginning point bears N  $43^{\circ}-00'$  E 635.6 feet from a iron at the intersection of County Road 101 with Township Road 107.

Thence with the center of County Road 101 N  $43^{\circ}-00'$  W 473.0 feet to a iron.

Thence S  $54^{\circ}-29'$  E 451.0 feet to a iron in the north line of said 38.38 acre tract.

Thence with the said north line of said 38.38 acre tract S  $83^{\circ}-04'$  W 695.0 feet to the place of beginning.

Containing 2.43 acres more or less. Being surveyed from a 20.00 acre tract.

---

Owen K. Shirk  
Surveyor 4271

REC'D 11-6-07 SMM/OK

# Lee Surveying and Mapping Co., Inc.

Land Surveys • Topography • Subdivisions • Construction Layout

117 N. Madriver St.  
Bellefontaine OH 43311



Phone: (937) 593-7335  
Fax: (937) 593-7444

## SHIELDS 55.435 ACRES

Lying in Virginia Military Survey 9952, Richland and Rushcreek Townships, Logan County, Ohio.

Being all of the William H. Shields and Louise D. Shields 15 acre tract and 40.13 acre tract as deeded and described in Official Record 324, Page 501, Tract #1 and Tract #2 of the Logan County Records of Deeds and being more particularly described as follows:

Beginning on a 1 inch iron bar found on the intersection of center-lines of County Highway 101 and Township Road 107.

THENCE, with the center-line of County Highway 101 (60 feet wide), N 41°-17'-07"E, a distance of 636.07 feet to a railroad spike found.

THENCE, with the southerly lines of the Donna A. Gillespie 2.43 acre tract (O.R. 91, Pg. 536), the Donna A. Gillespie 2.000 acre tract (O.R. 105, Pg. 462) and the Philip B. Miller 32.907 acre tract (O.R. 860, Pg. 508), N 81°-12'-43"E, a distance of 1440.16 feet to a 5/8 inch iron rod set on the east line of Richland Township and the west line of Rushcreek Township, passing a 5/8 inch iron rod set at 46.74 feet.

THENCE, with the west line of the Robert W. Givens 5.799 acre tract (O.R. 119, Pg. 922), S 10°-18'-23"E, a distance of 1024.80 feet to a 5/8 inch iron rod set.

THENCE, with the northerly lines of the William H. Shields and Louise D. Shields 10 acre tract (O.R. 58, Pg. 164) and the Yvonne A. Elliott 8.09 acre tract (Vol. 351, Pg. 968), S 79°-25'-55"W, a distance of 1215.81 feet to a 5/8 inch iron rod set.

THENCE, with the west line of the said 8.09 acre tract, S 10°-59'-45"E, a distance of 660.00 feet to a MAG nail set over top of a stone found on the center-line of County Highway 111, the south line of Virginia Military Survey 9952 and the south line Richland Township, passing a 5/8 inch iron rod set at 639.00 feet.

THENCE, with the center-line of County Highway 111, the south line of Virginia Military Survey 9952 and the south line of Richland Township, S 79°-30'-36"W, a distance of 719.88 feet to a MAG nail found.

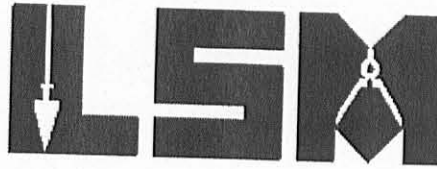
INDEXED ON MAP

4787 4D-1

# Lee Surveying and Mapping Co., Inc.

Land Surveys • Topography • Subdivisions • Construction Layout

117 N. Madriver St.  
Bellefontaine OH 43311

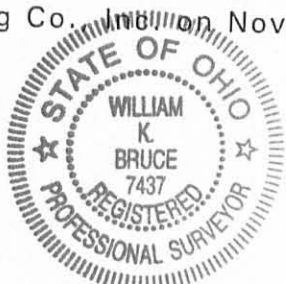


Phone: (937) 593-7335  
Fax: (937) 593-7444

THENCE, with the east lines of the Lillie L. Slonecker 1.00 acre tract (Vol. 386, Pg. 537) and the Thomas H. Drake, etal, 23 acre tract (Vol. 386, Pg. 528), N 10°-45'-00"W, a distance of 1335.65 feet to the point of beginning, passing 5/8 inch iron rods set at 21.00 feet and 1297.60 feet.

Containing 55.435 acres, of which 0.806 acre is within the highway rights-of-way. There are 52.716 acres in Richland Township and 2.719 acres in Rushcreek Township.

The basis for bearings is the center-line of County Highway 101 east of the intersection of Township Road 107, being N 41°-17'-07"E, and all other bearings are from angles and distances measured in a field survey by Lee Surveying and Mapping Co., Inc. on November 1, 2007.



ORIGINAL STAMP IN GREEN

Description prepared by:

William K. Bruce  
Professional Surveyor 7437  
November 1, 2007

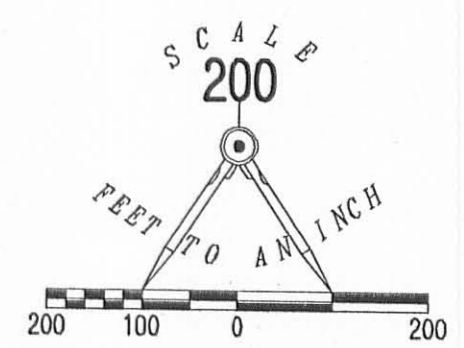
822107

INDEXED ON MAP

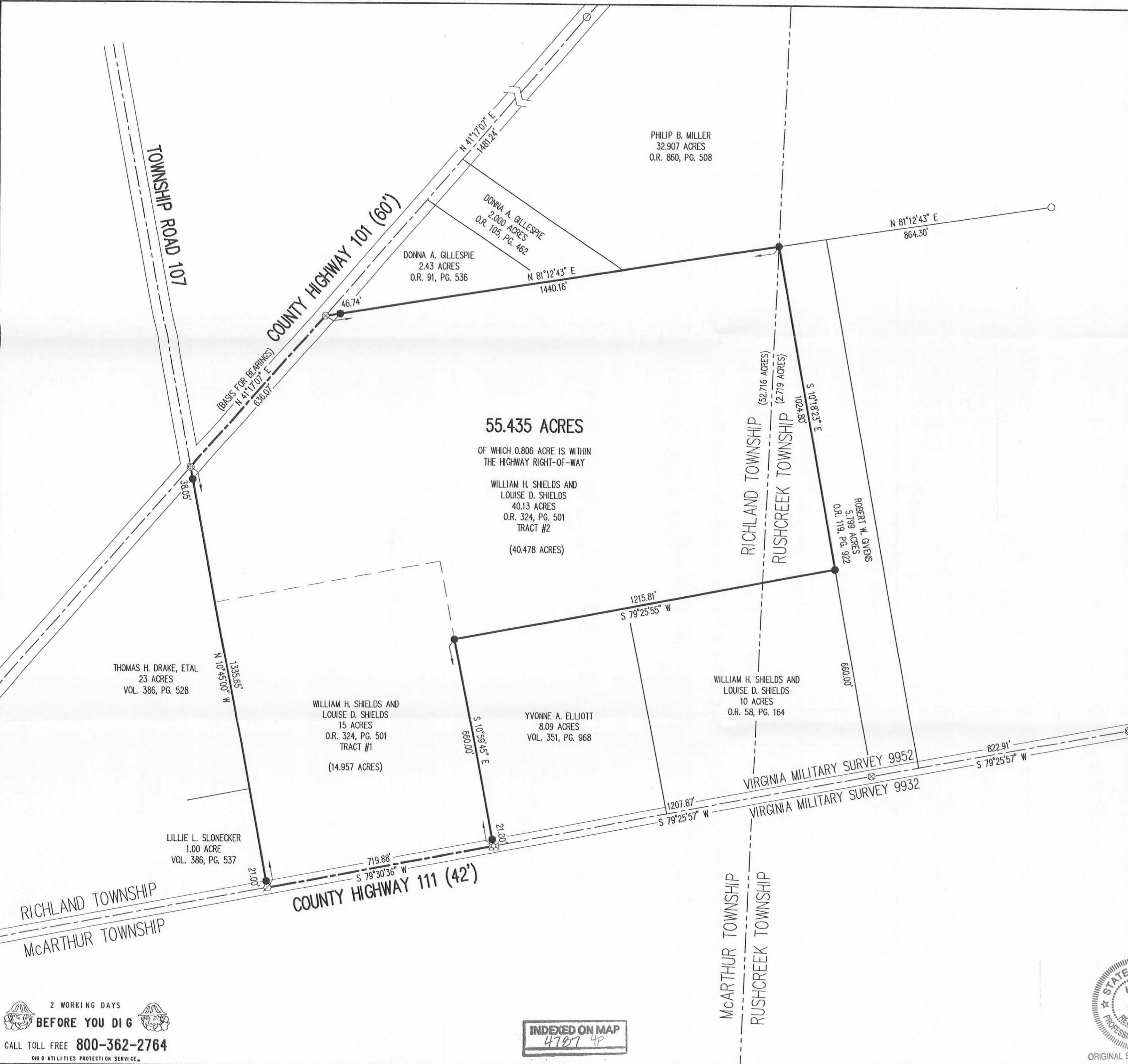
4787 4D-2



REC'D 11-6-07 SWJ OK



- LEGEND:
- ⊗ MAG NAIL FOUND
  - ⊠ MAG NAIL SET OVER TOP OF STONE FOUND
  - ⊗ RAILROAD SPIKE FOUND
  - ⊙ 1/2 INCH IRON ROD FOUND
  - ⊕ 1 INCH IRON BAR FOUND
  - 5/8 INCH IRON ROD SET
  - 5/8 INCH IRON ROD FOUND



RETRACEMENT SURVEY OF THE  
WILLIAM H. SHIELDS AND  
LOUISE D. SHIELDS  
15 ACRE TRACT AND 40.13 ACRE TRACT  
OFFICIAL RECORD 324, PAGE 501  
TRACT #1 AND TRACT #2  
VIRGINIA MILITARY SURVEY 9952  
RICHLAND AND RUSHCREEK TOWNSHIP  
LOGAN COUNTY, OHIO

SURVEYED BY:  
*William K. Bruce*  
WILLIAM K. BRUCE  
PROFESSIONAL SURVEYOR 7437  
NOVEMBER 1, 2007



COPYRIGHT 2007 BY:  
LEE SURVEYING & MAPPING CO., INC.  
117 North Madriver Street  
BELLEFONTAINE, OHIO 43111  
(937) 593-7335  
surveys@lsmcinc.us

2 WORKING DAYS  
BEFORE YOU DIG  
CALL TOLL FREE 800-362-2764  
OHIO UTILITIES PROTECTION SERVICE

INDEXED ON MAP  
4787 4P

ORIGINAL STAMP IN GREEN

KSS D1107 822107 L-822-2