

LESLIE H. GEESLIN
REGISTERED SURVEYOR NO. 5248
P. O. BOX 274
RUSHSVLVANIA. OHIO 43347

TELEPHONE: (513) 468-2793

VARNER SURVEY

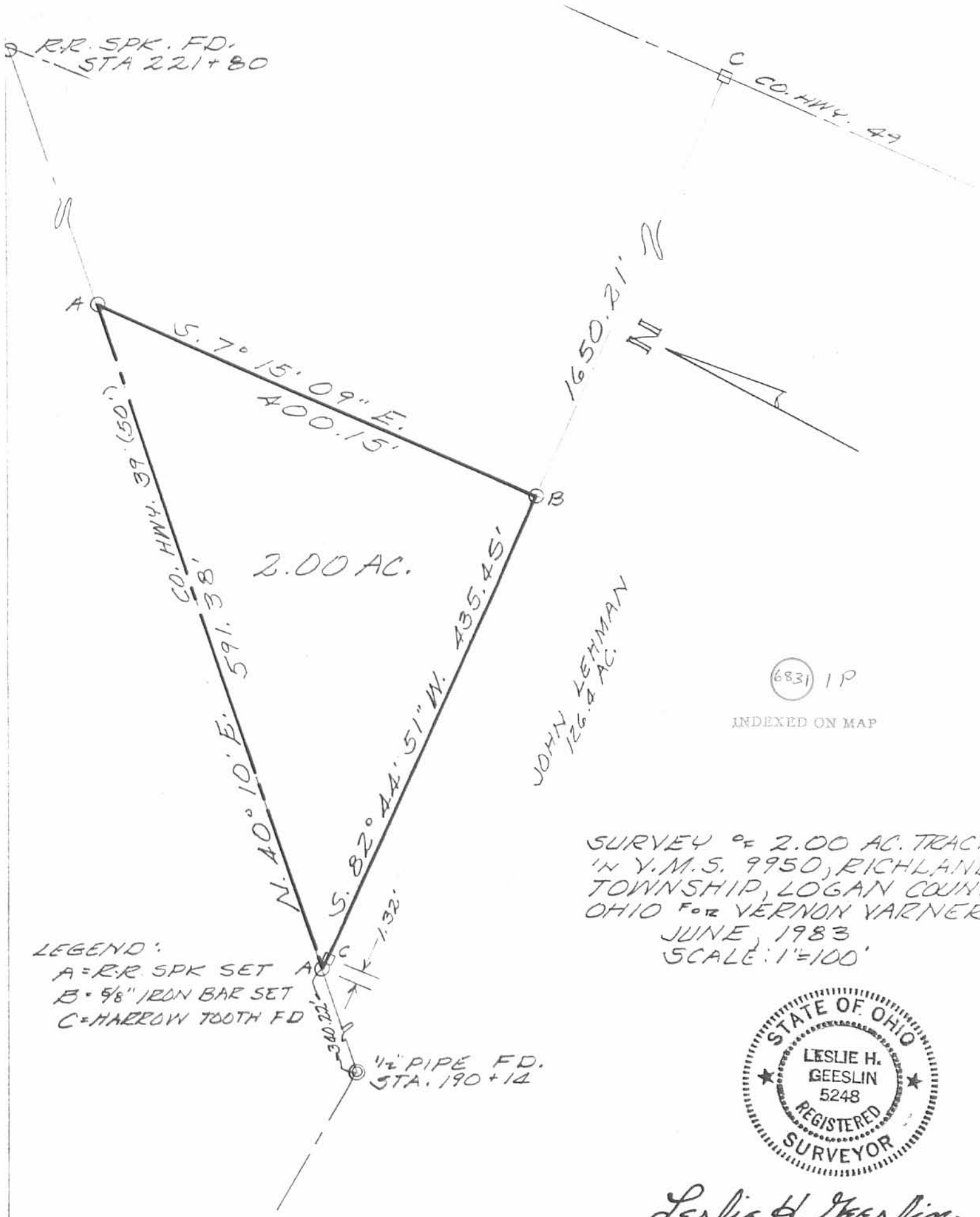
May, 1983

The following described real estate situated in the State of Ohio, County of Logan, Township of Richland, being part of Virginia Military Survey No. 9950 and more particularly described as follows:

Beginning at an iron bar at the southwest corner of Vernon Varner's 20.00 acre tract as described in Deed Book Vol. 246 Page 142, in the centerline of County Highway 39, said iron bar being N. $40^{\circ} 10'$ E. 340.22 feet from an iron pipe at Station 190 plus 14 as shown on page 25 of Field Book 579; thence with said centerline N. $40^{\circ} 10'$ E. 591.38 feet to an iron bar; thence S. $7^{\circ} 15' 09''$ E. 400.15 feet to an iron bar; thence S. $82^{\circ} 44' 51''$ W. 435.45 feet to the place of beginning, passing a harrow tooth at 434.13 feet.

Containing 2.00 acres more or less.

(6831) 1D
INDEXED ON MAP



SURVEY OF 2.00 AC. TRACT
IN Y.M.S. 9950, RICHLAND
TOWNSHIP, LOGAN COUNTY,
OHIO FOR VERNON VARNER
JUNE, 1983
SCALE: 1"=100'



Leslie H. Geeslin
LESLIE H. GEESLIN
RUSHSVLVANIA, OHIO

RD 11-16-01 SMJ OK

Lee Surveying and Mapping Co., Inc.

Land Surveys • Topography • Subdivisions • Construction Layout

117 N. Madriver St.
Bellefontaine OH 43311



Phone: (937) 593-7335
Fax: (937) 593-7444

MILLER 4.891 ACRES TRACT A

Lying in Virginia Military Survey 9950, Richland Township, Logan County, Ohio.

Being out of the Steven P. Miller 4.70 acre tract and 18.0 acre tract as deeded and described in Official Record 2, Page 270, Tract I and Tract II of the Logan County Records of Deeds and being more particularly described as follows:

Beginning at a stone with monument cover found on the center-line of County Highway 49 at the northeast corner of Virginia Military Survey 9950.

THENCE, with the east line of Virginia Military Survey 9950 and the center-line of County Highway 49, (40 feet wide), S 6°-00'-00" E, a distance of 543.18 feet to a MAG nail set at the TRUE POINT OF BEGINNING.

THENCE, with the east line of Virginia Military Survey 9950 and the center-line of County Highway 49, S 6°-00'-00" E, a distance of 309.44 feet to a MAG nail set.

THENCE, S 84°-25'-26" W, a distance of 688.53 feet to a 5/8 inch iron rod set, passing a 5/8 inch iron rod set at 20.00 feet.

THENCE, N 6°-00'-00" W, a distance of 309.44 feet to a 5/8 inch iron rod set.

THENCE, with the south line of the James F. Sanders, Trustee, 20.50 acre tract (O.R. 415, Pg. 136), N 84°-25'-26" E, a distance of 688.53 feet to the point of beginning, passing a 5/8 inch iron rod set at 668.53 feet.

Containing 4.891 acres, of which 0.142 acre is within the highway right-of-way.

The basis for bearings is the center-line of County Highway 49, being S 6°-00'-00" E, and all other bearings are from angles and distances measured in a field survey by Lee Surveying and Mapping Co., Inc. on October 29, 2001.

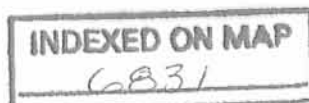
Description prepared by:



ORIGINAL STAMP IN GREEN

Jeffrey I. Lee
Jeffrey I. Lee
Professional Surveyor 6359
November 7, 2001

L-3262



RD -1

REC'D 11-16-01 SMY OK

Lee Surveying and Mapping Co., Inc.

Land Surveys • Topography • Subdivisions • Construction Layout

117 N. Madriver St.
Bellefontaine OH 43311



Phone: (937) 593-7335
Fax: (937) 593-7444

MILLER 4.891 ACRES TRACT B

Lying in Virginia Military Survey 9950, Richland Township, Logan County, Ohio.

Being out of the Steven P. Miller 18.0 acre tract as deeded and described in Official Record 2, Page 270, Tract II of the Logan County Records of Deeds and being more particularly described as follows:

Beginning at a stone with monument cover found on the center-line of County Highway 49 at the northeast corner of Virginia Military Survey 9950.

THENCE, with the east line of Virginia Military Survey 9950 and the center-line of County Highway 49, (40 feet wide), S 6°-00'-00" E, a distance of 852.62 feet to a MAG nail set at the TRUE POINT OF BEGINNING.

THENCE, with the east line of Virginia Military Survey 9950 and the center-line of County Highway 49, S 6°-00'-00" E, a distance of 316.36 feet to a MAG nail set.

THENCE, with the north line of the John A. Lehman original 126.37 acre tract (Vol. 382, Pg. 115), S 84°-19'-46" W, a distance of 599.07 feet to a 5/8 inch iron rod set, passing a 5/8 inch iron rod set at 20.00 feet.

THENCE, N 43°-40'-25" W, a distance of 146.36 feet to a 5/8 inch iron rod set.

THENCE, N 6°-00'-00" W, a distance of 202.16 feet to a 5/8 inch iron rod set.

THENCE, N 84°-25'-26" E, a distance of 688.53 feet to the point of beginning, passing a 5/8 inch iron rod set at 668.53 feet.

Containing 4.891 acres, of which 0.145 acre is within the highway right-of-way.

The basis for bearings is the center-line of County Highway 49, being S 6°-00'-00" E, and all other bearings are from angles and distances measured in a field survey by Lee Surveying and Mapping Co., Inc. on October 29, 2001.

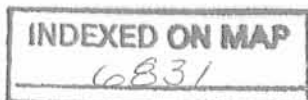
Description prepared by:



ORIGINAL STAMP IN GREEN

Jeffrey I. Lee
Professional Surveyor 6359
November 7, 2001

L-3262



2D-2

Lee Surveying and Mapping Co., Inc.

Land Surveys • Topography • Subdivisions • Construction Layout

117 N. Madriver St.
Bellefontaine OH 43311



Phone: (937) 593-7335
Fax: (937) 593-7444

MILLER 13.292 ACRES TRACT C

Lying in Virginia Military Survey 9950, Richland Township, Logan County, Ohio.

Being out of the Steven P. Miller 4.70 acre tract and 18.0 acre tract as deeded and described in Official Record 2, Page 270, Tract I and Tract II of the Logan County Records of Deeds and being more particularly described as follows:

Beginning at a stone with monument cover found on the center-line of County Highway 49 at the northeast corner of Virginia Military Survey 9950.

THENCE, with the east line of Virginia Military Survey 9950 and the center-line of County Highway 49, (40 feet wide), S 6°-00'-00" E, a distance of 543.18 feet to a MAG nail set.

THENCE, with the south line of the James F. Sanders, Trustee, 20.50 acre tract (O.R. 415, Pg. 136), S 84°-25'-26" W, a distance of 688.53 feet to a 5/8 inch iron rod set at the TRUE POINT OF BEGINNING, passing a 5/8 inch iron rod set at 20.00 feet.

THENCE, S 6°-00'-00" E, a distance of 511.60 feet to a 5/8 inch iron rod set.

THENCE, S 43°-40'-25" E, a distance of 146.36 feet to a 5/8 inch iron rod set.

THENCE, with the north line of the John A. Lehman original 126.37 acre tract (Vol. 382, Pg. 115), S 84°-19'-46" W, a distance of 1051.52 feet to a 5/8 inch iron rod set.

THENCE, with the east line of The New Richland Baptist Church 2.00 acre tract (Vol. 400, Pg. 210), N 5°-40'-14" W, a distance of 400.19 feet to a railroad spike found, passing a 5/8 inch iron rod set at 359.44 feet.

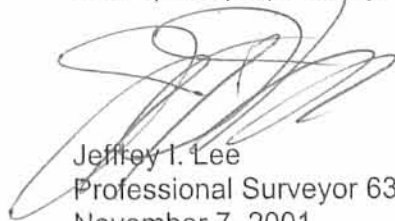
THENCE, with the center-line of County Highway 39 (60 feet wide), N 41°-44'-35" E, a distance of 334.27 feet to a MAG nail set.

THENCE, with the south line of the said 20.50 acre tract, N 84°-17'-13" E, a distance of 712.35 feet to the point of beginning.

Containing 13.292 acres, of which 0.251 acre is within the highway right-of-way.

The basis for bearings is the center-line of County Highway 49, being S 6°-00'-00" E, and all other bearings are from angles and distances measured in a field survey by Lee Surveying and Mapping Co., Inc. on October 29, 2001.

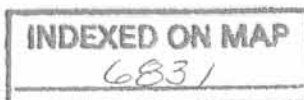
Description prepared by:


Jeffrey I. Lee
Professional Surveyor 6359
November 7, 2001



ORIGINAL STAMP IN GREEN

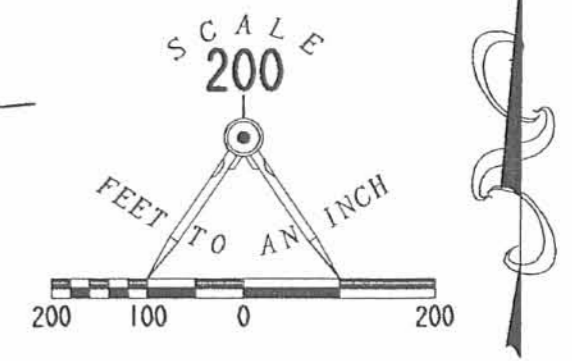
L-3262



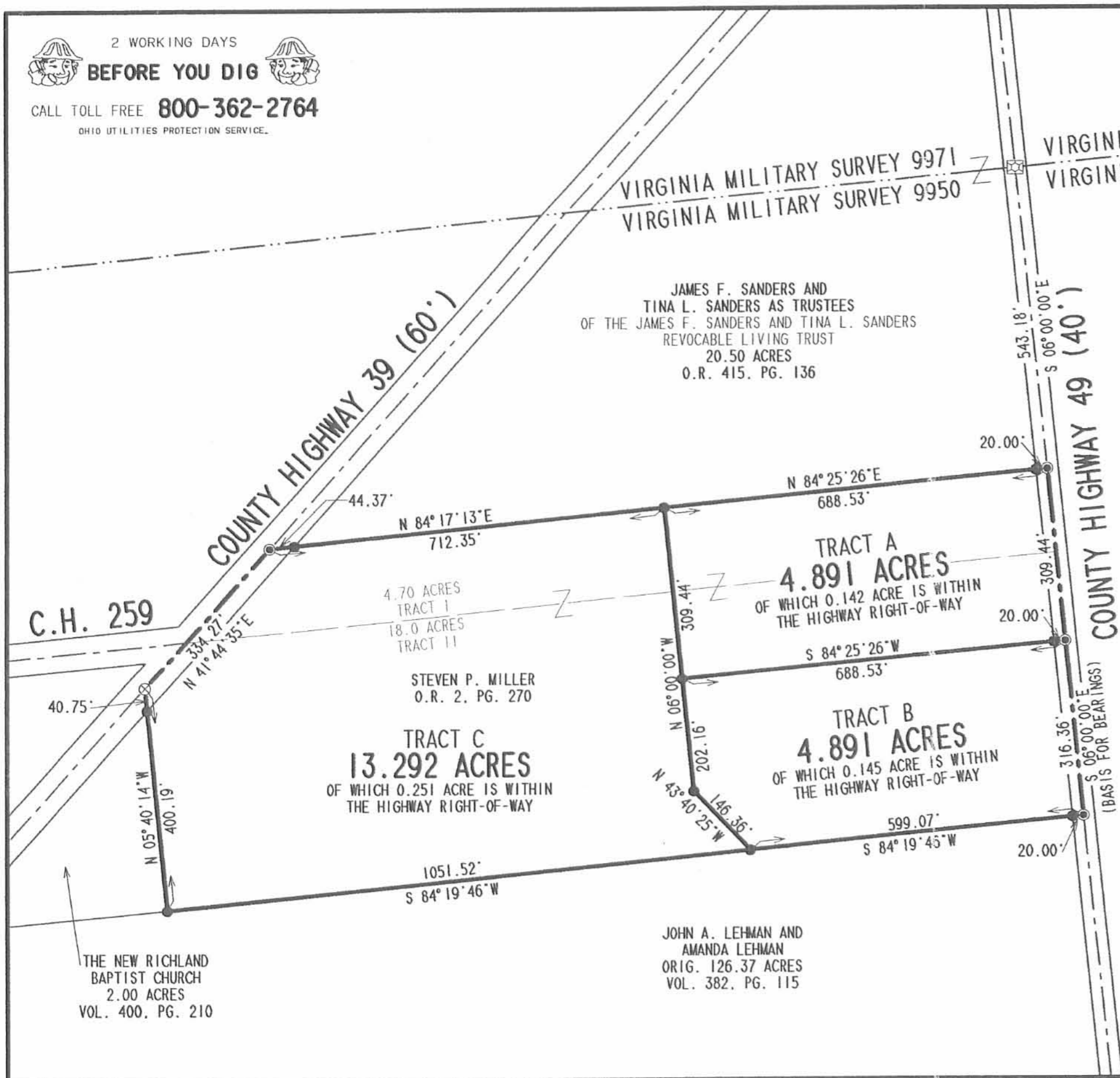
2D-3

REC ID 11-16-01 SMJ QK

2 WORKING DAYS
BEFORE YOU DIG
CALL TOLL FREE **800-362-2764**
OHIO UTILITIES PROTECTION SERVICE.



- LEGEND**
- 5/8 INCH IRON ROD SET
 - ⊙ MAG NAIL SET
 - ⊗ RAILROAD SPIKE FOUND
 - ⊠ STONE WITH MONUMENT COVER FOUND



SURVEY OF THREE TRACTS OUT OF THE STEVEN P. MILLER 4.70 ACRE TRACT I AND 18.0 ACRE TRACT II OFFICIAL RECORD 2, PAGE 270 VIRGINIA MILITARY SURVEY 9950 RICHLAND TOWNSHIP LOGAN COUNTY, OHIO



ORIGINAL STAMP IN GREEN

SURVEYED BY:
[Signature]
JEFFREY I. LEE
PROFESSIONAL SURVEYOR 6359
OCTOBER 29, 2001

COPYRIGHT 2001 BY:
LEE SURVEYING & MAPPING CO., INC.
117 North Madriver Street
BELLEFONTAINE, OHIO 43311
(937) 593-7335
SMILLER

D 405 L-3262-3

INDEXED ON MAP
L-831 2P