

REC'D 9-10-10 SMM/OK

# Lee Surveying and Mapping Co., Inc.

Land Surveys • Topography • Subdivisions • Construction Layout

117 N. Madriver St.  
Bellefontaine OH 43311



Phone: (937) 593-7335  
Fax: (937) 593-7444

## O'CONNOR'S LANDING, INC. 7.742 ACRES

Lying in Virginia Military Survey 9968, Richland Township, Logan County, Ohio.

Being out of the O'Connor's Landing, Inc., 10.35 acre tract as deeded and described in Volume 353, Page 659, Parcel 1, Tract 1 of the Logan County Records of Deeds and being more particularly described as follows:

Commencing on a 1-1/2 inch square iron bar found at an angle point in County Highway 254 at Station 52+58.50 (Logan County Engineer's Field Book 500, Page 11).

THENCE, with the west boundary line of the O'Connor Farms, Inc., original 130 acre tract (Vol. 353, Pg. 663, Tract VI), S 9°-47'-40"E, a distance of 555.89 feet to a 5/8 inch iron rod set on the State Line at the TRUE POINT OF BEGINNING, passing 5/8 inch iron rods set at 25.03 feet, 182.08 feet and 525.41 feet.

THENCE, with the west line of the said original 130 acre tract, S 9°-47'-40"E, a distance of 757.44 feet to a 5/8 inch iron rod set.

THENCE, S 82°-13'-54"W, a distance of 445.11 feet to a 5/8 inch iron rod set on the State Line.

THENCE, with the State Line, the following two courses:

N 0°-16'-31"W, a distance of 170.88 feet to a 5/8 inch square iron bar found at Wonders Base Line Station 214+57.3.

N 31°-05'-21"W, a distance of 188.86 feet to a point on the shore line of Indian Lake, referenced by a 5/8 inch iron rod set bearing N 81°-30'-19"E, a distance of 10.00 feet.

THENCE, with the shore line of Indian Lake, N 8°-29'-41"W, a distance of 42.86 feet to a point on the State Line, referenced by a 5/8 inch iron rod set bearing N 81°-30'-19"E, a distance of 10.00 feet.

THENCE, with the State Line, N 6°-14'-20"E, a distance of 78.29 feet to a point on the shore line of Indian Lake, referenced by a 5/8 inch iron rod set bearing S 70°-45'-05"E, a distance of 10.00 feet.

THENCE, with the shore line of Indian Lake, the following two courses:

N 19°-14'-55"E, a distance of 156.33 feet to a point, referenced by a 5/8 inch iron rod set bearing S 68°-30'-30"E, a distance of 12.16 feet.

N 20°-33'-49"W, a distance of 12.58 feet to a point on the State Line, referenced by a 5/8 inch iron rod set bearing N 69°-18'-29"E, a distance of 19.83 feet.

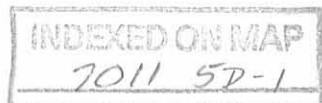
THENCE, with the State Line, the following two courses:

N 18°-54'-15"E, a distance of 18.71 feet to a 5/8 inch iron rod set at Wonders Base Line Station 219+53.

N 25°-54'-34"W, a distance of 127.63 feet to a point on the shore line of Indian Lake, referenced by a 5/8 inch iron rod set bearing N 69°-26'-11"E, a distance of 10.00 feet.

THENCE, with the shore line of Indian Lake, the following two courses:

N 20°-33'-49"W, a distance of 164.54 feet to a point, referenced by a 5/8 inch iron rod set bearing N 72°-59'-17"E, a distance of 16.55 feet.



# Lee Surveying and Mapping Co., Inc.

Land Surveys • Topography • Subdivisions • Construction Layout

117 N. Madriver St.  
Bellefontaine OH 43311



Phone: (937) 593-7335  
Fax: (937) 593-7444

N 18°-27'-24"E, a distance of 5.38 feet to a point on the State Line.

THENCE, with the State Line, the following four courses:

S 88°-56'-33"E, a distance of 89.06 feet to a 5/8 inch iron rod set, passing a 5/8 inch iron rod set at 14.13 feet.

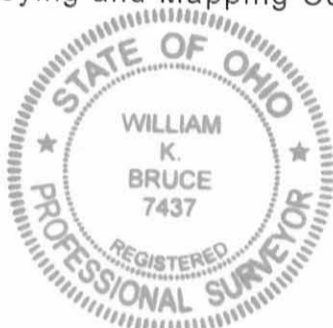
N 67°-24'-19"E, a distance of 42.58 feet to a 2 inch metal pipe found.

S 20°-40'-36"E, a distance of 246.99 feet to a 2 inch metal pipe found.

N 64°-39'-11"E, a distance of 278.23 feet to the point of beginning.

Containing 7.742 acres.

The basis for bearings is the north line of the State of Ohio, Department of Natural Resources 53 1/2 acre tract (O.R. 414, Pg. 832, Tract I), being S 82°-13'-54"W, and all other bearings are from angles and distances measured in a field survey by Lee Surveying and Mapping Co., Inc. on February 15, 2008, revised September 7, 2010.



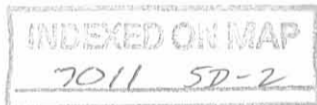
ORIGINAL STAMP IN GREEN

Description prepared by:

A handwritten signature in cursive script that reads 'William K. Bruce'.

William K. Bruce  
Professional Surveyor 7437  
September 7, 2010

4584810



2010 9-10-10 SUM BK

# Lee Surveying and Mapping Co., Inc.

Land Surveys • Topography • Subdivisions • Construction Layout

117 N. Madriver St.  
Bellefontaine OH 43311



Phone: (937) 593-7335  
Fax: (937) 593-7444

## O'CONNOR'S LANDING, INC. 2.164 ACRES

Lying in Virginia Military Survey 9968, Richland Township, Logan County, Ohio.

Being out of the O'Connor's Landing, Inc., 10.35 acre tract as deeded and described in Volume 353, Page 659, Parcel 1, Tract 1 of the Logan County Records of Deeds and being more particularly described as follows:

Commencing on a 1-1/2 inch square iron bar found at an angle point in County Highway 254 at Station 52+58.50 (Logan County Engineer's Field Book 500, Page 11).

THENCE, with the west boundary line of the O'Connor Farms, Inc., original 130 acre tract (Vol. 353, Pg. 663, Tract VI), S 9°-47'-40"E, a distance of 1313.33 feet to a 5/8 inch iron rod set at the TRUE POINT OF BEGINNING, passing 5/8 inch iron rods set at 25.03 feet, 182.08 feet, 525.41 feet and 555.89 feet.

THENCE, with the west line of the said original 130 acre tract, S 9°-47'-40"E, a distance of 213.27 feet to a 5/8 inch iron rod set.

THENCE, with the north line of the State of Ohio, Department of Natural Resources 53 1/2 acre tract (O.R. 414, Pg. 832, Tract I), S 82°-13'-54"W, a distance of 439.56 feet to a 10" Elm tree found on the State Line, passing a 2 inch metal pipe found at 427.00 feet.

THENCE, with the State Line, N 11°-16'-59"W, a distance of 213.53 feet to a 5/8 inch iron rod set, passing a 5/8 inch iron rod set at 1.81 feet.

THENCE, N 82°-13'-54"E, a distance of 445.11 feet to the point of beginning

Containing 2.164 acres.

The basis for bearings is the north line of the State of Ohio, Department of Natural Resources 53 1/2 acre tract (O.R. 414, Pg. 832, Tract I), being S 82°-13'-54"W, and all other bearings are from angles and distances measured in a field survey by Lee Surveying and Mapping Co., Inc. on February 15, 2008, revised September 7, 2010.

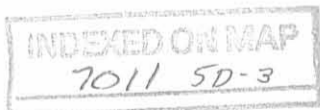


ORIGINAL STAMP IN GREEN

Description prepared by:

William K. Bruce  
Professional Surveyor 7437  
September 7, 2010

4584810

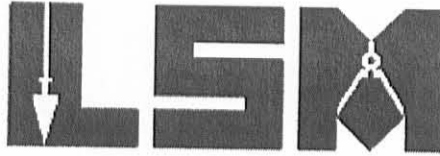


REC'D 9-10-10 SWY OK

# Lee Surveying and Mapping Co., Inc.

Land Surveys • Topography • Subdivisions • Construction Layout

117 N. Madriver St.  
Bellefontaine OH 43311



Phone: (937) 593-7335  
Fax: (937) 593-7444

## INDIAN LAKE RESERVOIR LANDS 1.039 ACRES

Lying in Virginia Military Survey 9968, Richland Township, Logan County, Ohio.

Being out of the Indian Lake Reservoir Lands and being more particularly described as follows:

Commencing on a 1-1/2 inch square iron bar found at an angle point in County Highway 254 at Station 52+58.50 (Logan County Engineer's Field Book 500, Page 11).

THENCE, with the west boundary line of the O'Connor Farms, Inc., original 130 acre tract (Vol. 353, Pg. 663, Tract VI), S 9°-47'-40"E, a distance of 1526.60 feet to a 5/8 inch iron rod set, passing 5/8 inch iron rods set at 25.03 feet, 182.08 feet, 525.41 feet, 555.89 feet and 1313.33 feet.

THENCE, with the north line of the State of Ohio, Department of Natural Resources 53 1/2 acre tract (O.R. 414, Pg. 832, Tract I), S 82°-13'-54"W, a distance of 439.56 feet to a 10" Elm tree found on the State Line at the TRUE POINT OF BEGINNING, passing a 2 inch metal pipe found at 427.00 feet.

THENCE, with the north line of the said 53 1/2 acre tract extended, S 82°-13'-54"W, a distance of 245.42 feet to a point on the shore line of Indian Lake, passing a 5/8 inch iron rod set at 236.81 feet.

THENCE, with the shore line of Indian Lake, the following three courses:

N 1°-53'-39"E, a distance of 214.57 feet to a point, referenced by a 5/8 inch iron rod set bearing S 1°-31'-26"E, a distance of 15.64 feet.

S 66°-59'-21"E, a distance of 54.48 feet to a point, referenced by a 5/8 inch iron rod set bearing S 18°-06'-58"E, a distance of 15.17 feet.

N 64°-44'-55"E, a distance of 136.53 feet to a point.

THENCE, S 66°-52'-42"E, a distance of 22.47 feet to a 5/8 inch iron rod set on the State Line.

THENCE, with the State Line and a west line of the O'Connor's Landing, Inc., 10.35 acre tract (Vol. 353, Pg. 659, Parcel 1, Tract 1), S 11°-16'-59"E, a distance of 213.53 feet to the point of beginning, passing a 5/8 inch iron rod set at 211.72 feet.

Containing 1.039 acres.

The basis for bearings is the north line of the State of Ohio, Department of Natural Resources 53 1/2 acre tract (O.R. 414, Pg. 832, Tract I), being S 82°-13'-54"W, and all other bearings are from angles and distances measured in a field survey by Lee Surveying and Mapping Co., Inc. on February 15, 2008, revised September 7, 2010.

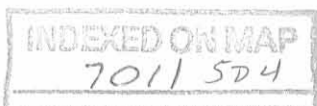


ORIGINAL STAMP IN GREEN

Description prepared by:

William K. Bruce  
Professional Surveyor 7437  
September 7, 2010

4584810

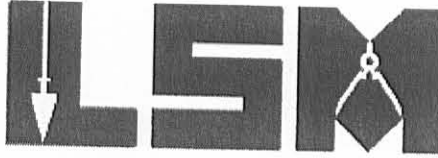


REC'D 9-10-10 smy auc

# Lee Surveying and Mapping Co., Inc.

Land Surveys • Topography • Subdivisions • Construction Layout

117 N. Madriver St.  
Bellefontaine OH 43311



Phone: (937) 593-7335  
Fax: (937) 593-7444

## INDIAN LAKE RESERVOIR LANDS 0.068 ACRE

Lying in Virginia Military Survey 9968, Richland Township, Logan County, Ohio.

Being out of the Indian Lake Reservoir Lands and being more particularly described as follows:

Commencing on a 1-1/2 inch square iron bar found at an angle point in County Highway 254 at Station 52+58.50 (Logan County Engineer's Field Book 500, Page 11).

THENCE, with the west boundary line of the O'Connor Farms, Inc., original 130 acre tract (Vol. 353, Pg. 663, Tract VI), S 9°-47'-40"E, a distance of 1526.60 feet to a 5/8 inch iron rod set, passing 5/8 inch iron rods set at 25.03 feet, 182.08 feet, 525.41 feet, 555.89 feet and 1313.33 feet.

THENCE, with the north line of the State of Ohio, Department of Natural Resources 53 1/2 acre tract (O.R. 414, Pg. 832, Tract I), S 82°-13'-54"W, a distance of 439.56 feet to a 10" Elm tree found on the State Line, passing a 2 inch metal pipe found at 427.00 feet.

THENCE, with the with the State Line and the west line of the O'Connor's Landing, Inc., 10.35 acre tract (Vol. 353, Pg. 659, Parcel 1, Tract 1), N 11°-16'-59"W, a distance of 213.53 feet to a 5/8 inch iron rod set at the TRUE POINT OF BEGINNING.

THENCE, N 66°-52'-42"W, a distance of 22.47 feet to a point on the shore line of Indian Lake.

THENCE, with the shore line of Indian Lake, the following three courses:

N 5°-21'-16"E, a distance of 164.10 feet to a point, referenced by a 5/8 inch square iron bar found at Wonders Base Line Station 214+57.3 bearing S 73°-42'-28"E, a distance of 4.72 feet.

N 32°-02'-54"W, a distance of 170.86 feet to a point, referenced by a 5/8 inch iron rod set bearing N 54°-46'-13"E, a distance of 8.41 feet.

N 8°-29'-41"W, a distance of 15.76 feet to a point on the State Line, referenced by a 5/8 inch iron rod set bearing N 81°-30'-19"E, a distance of 10.00 feet.

THENCE, with the State Line and the west lines of the aforesaid 10.35 acre tract, the following two courses:

S 31°-05'-21"E, a distance of 188.86 feet to a 5/8 inch square iron bar found at Wonders Base Line Station 214+57.3.

S 0°-16'-31"E, a distance of 170.88 feet to the point of beginning.

Containing 0.068 acre.

The basis for bearings is the north line of the State of Ohio, Department of Natural Resources 53 1/2 acre tract (O.R. 414, Pg. 832, Tract I), being S 82°-13'-54"W, and all other bearings are from angles and distances measured in a field survey by Lee Surveying and Mapping Co., Inc. on February 15, 2008, revised September 7, 2010.

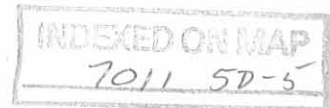


ORIGINAL STAMP IN GREEN

Description prepared by:

*William K. Bruce*

William K. Bruce  
Professional Surveyor 7437  
September 7, 2010



4584810

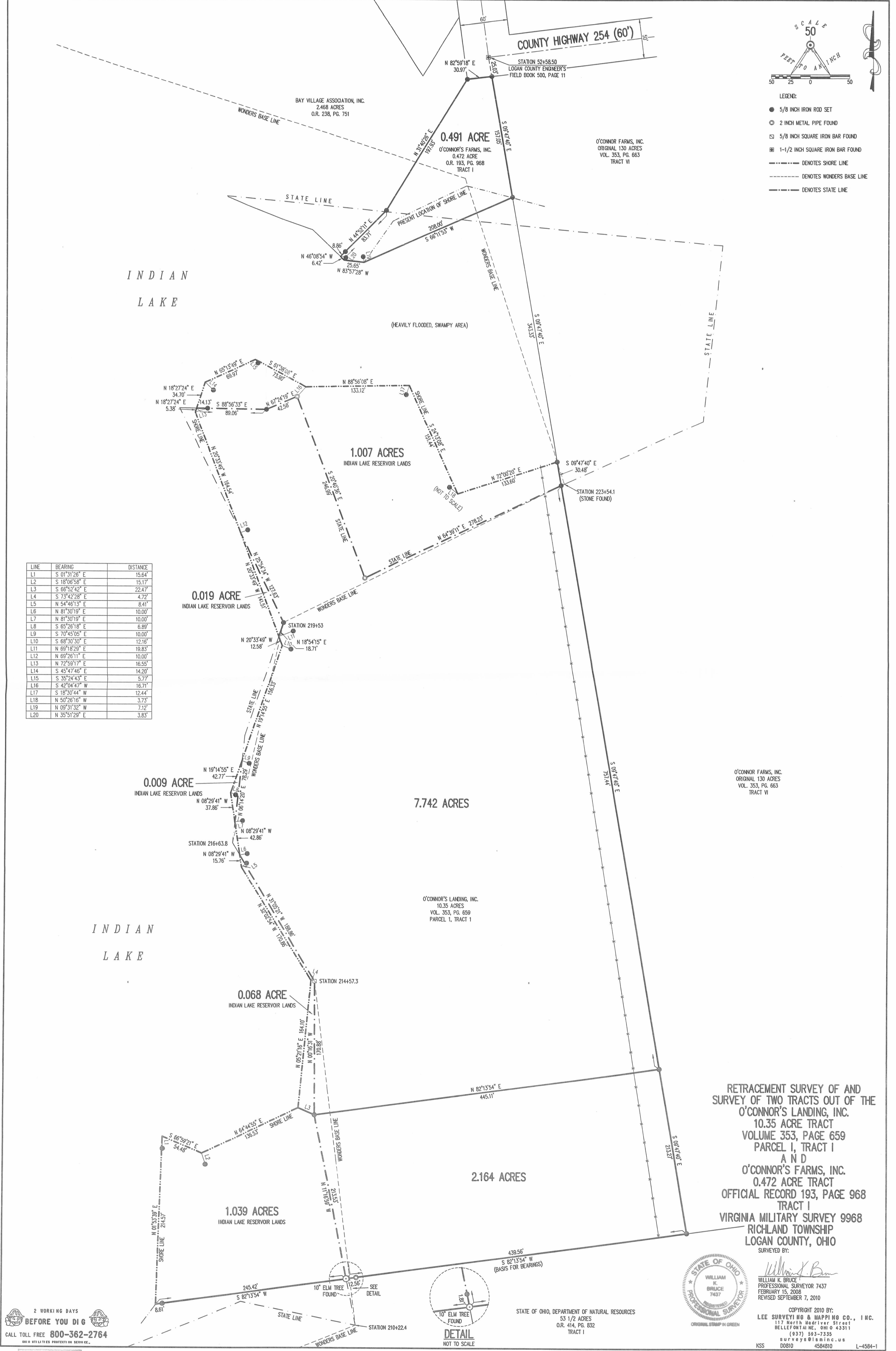
SCALE  
50  
FEET TO AN INCH

LEGEND:  
 ● 5/8 INCH IRON ROD SET  
 ○ 2 INCH METAL PIPE FOUND  
 □ 5/8 INCH SQUARE IRON BAR FOUND  
 ⊠ 1-1/2 INCH SQUARE IRON BAR FOUND  
 - - - - - DENOTES SHORE LINE  
 - - - - - DENOTES WONDERS BASE LINE  
 - - - - - DENOTES STATE LINE

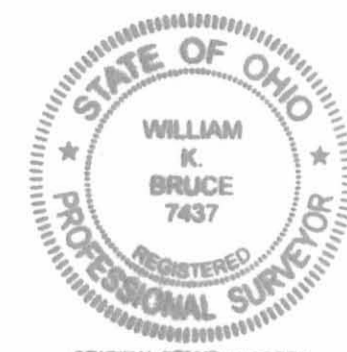
INDIAN  
LAKE

(HEAVILY FLOODED, SWAMPY AREA)

LINE	BEARING	DISTANCE
L1	S 01°31'26" E	15.64'
L2	S 18°06'58" E	15.17'
L3	S 66°52'42" E	22.47'
L4	S 73°42'28" E	4.72'
L5	N 54°46'13" E	8.41'
L6	N 81°30'19" E	10.00'
L7	N 81°30'19" E	10.00'
L8	S 65°26'18" E	6.89'
L9	S 70°45'05" E	10.00'
L10	S 68°30'30" E	12.16'
L11	N 69°18'29" E	19.83'
L12	N 69°26'11" E	10.00'
L13	N 72°58'17" E	16.55'
L14	S 45°47'46" E	14.20'
L15	S 35°24'43" E	5.77'
L16	S 42°04'47" W	16.71'
L17	S 18°30'44" W	12.44'
L18	N 50°26'16" W	3.73'
L19	N 09°31'32" W	7.12'
L20	N 35°51'29" E	3.83'



RETRACEMENT SURVEY OF AND  
SURVEY OF TWO TRACTS OUT OF THE  
O'CONNOR'S LANDING, INC.  
10.35 ACRE TRACT  
VOLUME 353, PAGE 659  
PARCEL 1, TRACT I  
AND  
O'CONNOR'S FARMS, INC.  
0.472 ACRE TRACT  
OFFICIAL RECORD 193, PAGE 968  
TRACT I  
VIRGINIA MILITARY SURVEY 9968  
RICHLAND TOWNSHIP  
LOGAN COUNTY, OHIO



SURVEYED BY:  
*William K. Bruce*  
WILLIAM K. BRUCE  
PROFESSIONAL SURVEYOR 7437  
FEBRUARY 15, 2008  
REVISED SEPTEMBER 7, 2010

COPYRIGHT 2010 BY:  
LEE SURVEYING & MAPPING CO., INC.  
117 North Madriver Street  
BELLEVUE, OHIO 43311  
(937) 561-7335  
surveys@lsminc.us  
KSS D0810 4584810 L-4584-1

2 WORKING DAYS  
BEFORE YOU DIG  
CALL TOLL FREE 800-362-2764  
OHIO UTILITIES PROTECTION SERVICE

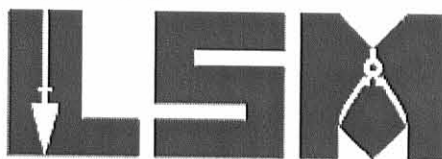


STATE OF OHIO, DEPARTMENT OF NATURAL RESOURCES  
53 1/2 ACRES  
O.R. 414, PG. 832  
TRACT I

# Lee Surveying and Mapping Co., Inc.

Land Surveys • Topography • Subdivisions • Construction Layout

117 N. Madriver St.  
Bellefontaine OH 43311



Phone: (937) 593-7335  
Fax: (937) 593-7444  
surveys@lsminc.us

## INDIAN LAKE RESERVOIR LANDS CONSERVATION EASEMENT 0.877 ACRE

Lying in Virginia Military Survey 9968, Richland Township, Logan County, Ohio.

Being a conservation easement over a portion of the Indian Lake Reservoir Lands and being more particularly described as follows:

Commencing on a 1-1/2 inch square iron bar found at an angle point in County Highway 254 at Station 52+58.50 (Logan County Engineer's Field Book 500, Page 11).

THENCE, with the west boundary line of the O'Connor Farms, Inc., original 130 acre tract (Vol. 353, Pg. 663, Tract VI), S 9°-47'-40"E, a distance of 525.41 feet to a 5/8 inch iron rod set at the TRUE POINT OF BEGINNING, passing 5/8 inch iron rods set at 25.03 feet and 182.08 feet.

THENCE, with the west line of the said original 130 acre tract, S 9°-47'-40"E, a distance of 30.48 feet to a 5/8 inch iron rod set on the State Line.

THENCE, with the State Line, the following two courses:

S 64°-39'-11"W, a distance of 278.23 feet to a 2 inch metal pipe found.

N 20°-40'-36"W, a distance of 246.99 feet to a 2 inch metal pipe found.

THENCE, N 42°-04'-47"E, a distance of 16.71 feet to a point on the shore line of Indian Lake.

THENCE, with the shore line of Indian Lake, the following three courses:

N 88°-56'-08"E, a distance of 133.12 feet to a point, referenced by a 5/8 inch iron rod set bearing S 18°-30'-44"W, a distance of 12.44 feet.

S 24°-13'-08"E, a distance of 151.44 feet to a point, referenced by a 5/8 inch iron rod set bearing N 50°-26'-16"W, a distance of 3.73 feet.

N 72°-00'-20"E, a distance of 133.60 feet to the point of beginning.

Containing 0.877 acre.

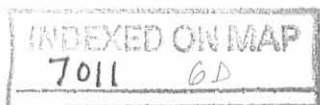
The basis for bearings is the north line of the State of Ohio, Department of Natural Resources 53 1/2 acre tract (O.R. 414, Pg. 832, Tract I), being S 82°-13'-54"W, and all other bearings are from angles and distances measured in a field survey by Lee Surveying and Mapping Co., Inc. on February 15, 2008.

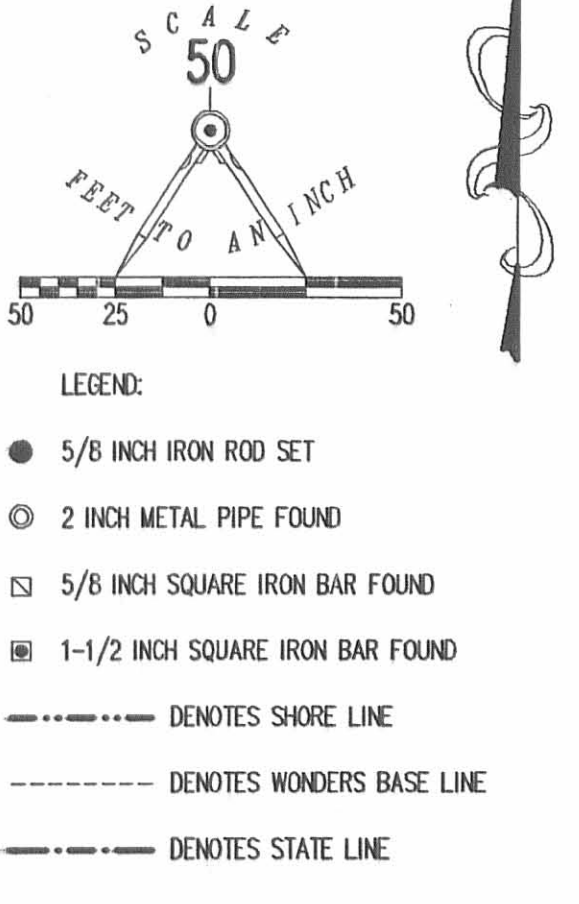


Description prepared by:

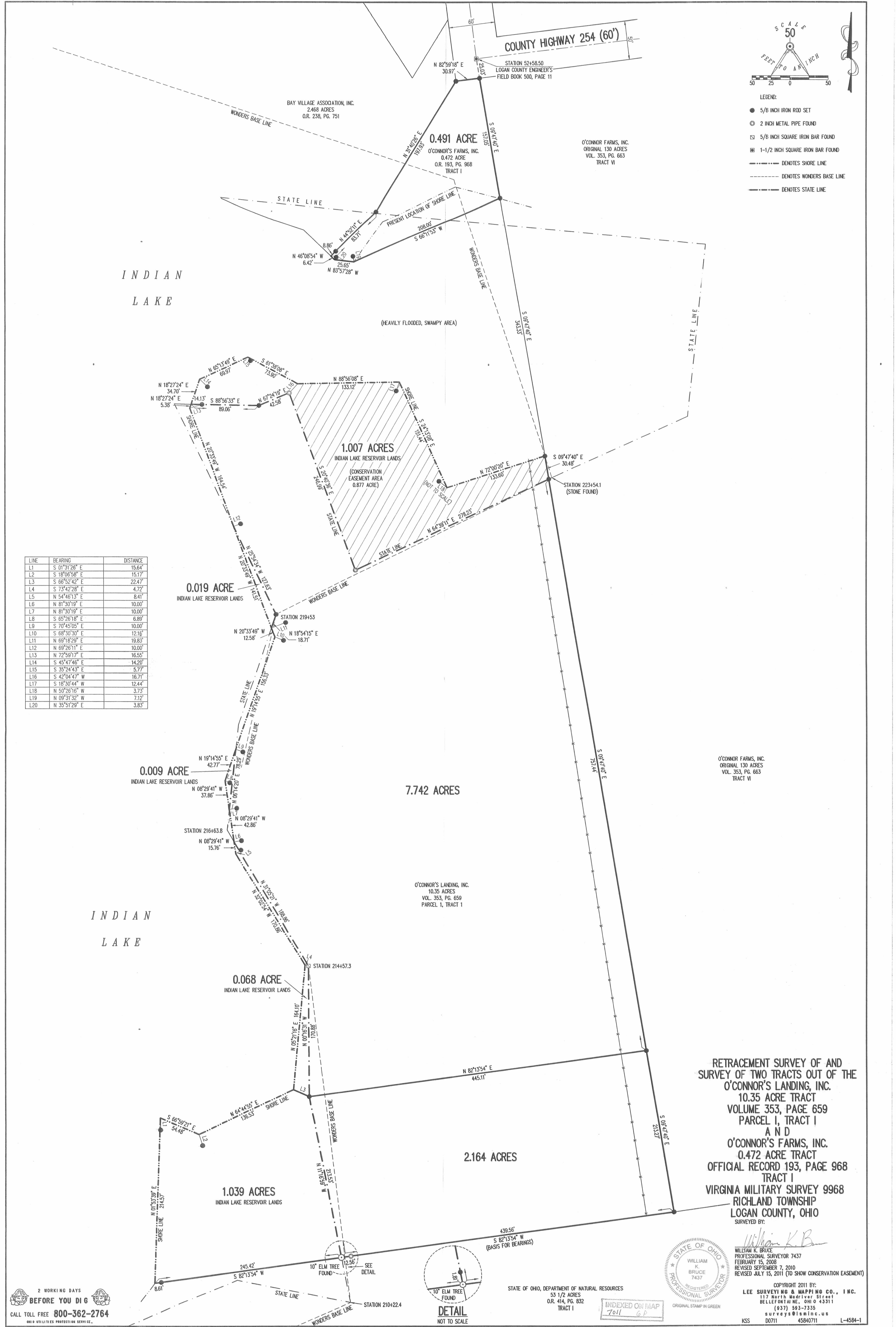
William K. Bruce  
Professional Surveyor 7437  
July 15, 2011

45840711





LINE	BEARING	DISTANCE
L1	S 01°31'26" E	15.64'
L2	S 18°06'58" E	15.17'
L3	S 66°52'42" E	22.47'
L4	S 73°42'28" E	4.72'
L5	N 54°46'13" E	8.41'
L6	N 81°30'19" E	10.00'
L7	N 81°30'19" E	10.00'
L8	S 65°26'18" E	6.89'
L9	S 70°45'05" E	10.00'
L10	S 68°30'30" E	12.16'
L11	N 69°18'29" E	19.83'
L12	N 69°26'11" E	10.00'
L13	N 72°59'17" E	16.55'
L14	S 45°47'46" E	14.20'
L15	S 35°24'43" E	5.77'
L16	S 42°04'47" W	16.71'
L17	S 18°30'44" W	12.44'
L18	N 50°26'16" W	3.73'
L19	N 09°31'32" W	7.12'
L20	N 35°51'29" E	3.83'

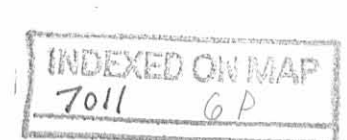


RETRACEMENT SURVEY OF AND SURVEY OF TWO TRACTS OUT OF THE O'CONNOR'S LANDING, INC. 10.35 ACRE TRACT VOLUME 353, PAGE 659 PARCEL 1, TRACT I AND O'CONNOR'S FARMS, INC. 0.472 ACRE TRACT OFFICIAL RECORD 193, PAGE 968 TRACT I VIRGINIA MILITARY SURVEY 9968 RICHLAND TOWNSHIP LOGAN COUNTY, OHIO SURVEYED BY:



WILLIAM K. BRUCE  
PROFESSIONAL SURVEYOR 7437  
FEBRUARY 15, 2008  
REVISED SEPTEMBER 7, 2010  
REVISED JULY 15, 2011 (TO SHOW CONSERVATION EASEMENT)

STATE OF OHIO, DEPARTMENT OF NATURAL RESOURCES  
5 1/2 ACRES  
O.R. 414, PG. 832  
TRACT I



ORIGINAL STAMP IN GREEN

COPYRIGHT 2011 BY:  
LEE SURVEYING & MAPPING CO., INC.  
117 North Meddler Street  
BELLEFONTAINE, OHIO 43111  
(937) 593-7335  
surveys@lsmc.us  
KSS D0711 45840711 L-4584-1