



# Lee Surveying and Mapping Co.



Farm Surveys • Lot Surveys • Topography • Subdivisions • Construction Layout

143 EAST COLUMBUS AVENUE  
BELLEFONTAINE, OHIO 43311

(513) 593-7335

JEFFREY I. LEE, P.S.

## EXHIBIT 'A'

Lying in Virginia Military Survey 9968, Richland Township, Logan County, Ohio.

Being all of those four Lakelands tracts (0.077 acre, 1.111 acre, 0.001 acre, and 0.305 acre) in the name of O'Connor's Landing, Inc., an Ohio Corporation, as deeded and described in Official Record 192, Page 733, all of the remainder of that original 18.58 acre tract and that 2.39 acre tract in the name of O'Connor's Landing, Inc., an Ohio Corporation, as deeded and described in Volume 353, Page 659, Parcel II, and, also, part of that original 130 acre tract in the name of O'Connor Farms, Inc., an Ohio Corporation, as deeded and described in Volume 353, Page 663, Tract VI, with all references being to the Logan County Records of Deeds and being more particularly described as follows:

Beginning at a 5/8 inch iron bar set at the northeast corner of Lot No. 11, O'Connor's Allotment No. 2, Richland Township, Logan County, Ohio as recorded in Plat Cabinet A, Slide 237, in the Logan County Recorder's Office.

THENCE, N 13°-08'-47" E, with the westerly right-of-way line extended of Breezy Way, said westerly right-of-way line being the east line of the Richard Steinmetz tract (O.R. 185, Pg. 624), a distance of 70.30 feet to the a 5/8 inch iron bar set at the northeast corner of the said Steinmetz real estate.

THENCE, N 76°-51'-05" W, with the north line of the said Steinmetz real estate 107.91 feet to the edge of the water, passing a 5/8 inch iron bar set for reference at 77.77 feet.

THENCE, with the edge of the water the following eleven courses:

N 7°-48'-32" E, a distance of 17.19 feet.

N 6°-12'-41" E, a distance of 18.26 feet.

N 3°-41'-21" W, a distance of 52.33 feet.

N 11°-07'-59" W, a distance of 7.62 feet.

N 1°-50'-26" W, a distance of 24.86 feet.

N 9°-38'-20" E, a distance of 9.73 feet.

N 23°-07'-52" E, a distance of 10.30 feet.

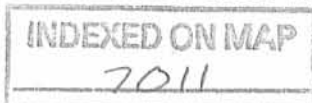
N 29°-08'-41" E, a distance of 10.02 feet.

N 24°-24'-30" E, a distance of 27.11 feet.

N 3°-27'-24" W, a distance of 25.27 feet.

N 60°-06'-20" E, a distance of 58.08 feet to the intersection of the said State Property Line and the edge of the water.

THENCE, continuing with the State Property Line, N 31°-27'-44" E, a distance of 18.12 feet to the edge of the water.



THENCE, with the edge of the water the following thirty-eight courses:

N 7°-02'-48" W, a distance of 53.57 feet.  
N 44°-53'-23" W, a distance of 24.90 feet.  
N 81°-42'-53" W, a distance of 58.09 feet.  
S 75°-23'-57" W, a distance of 18.00 feet.  
N 20°-31'-39" W, a distance of 87.92 feet.  
N 85°-12'-10" W, a distance of 7.22 feet.  
N 14°-27'-07" W, a distance of 64.26 feet.  
N 12°-02'-31" W, a distance of 16.38 feet.  
N 11°-49'-13" W, a distance of 98.70 feet.  
S 85°-26'-52" W, a distance of 1.70 feet.  
N 14°-01'-23" W, a distance of 48.15 feet.  
N 18°-03'-37" W, a distance of 48.20 feet.  
N 24°-41'-02" W, a distance of 184.63 feet.  
N 28°-49'-41" E, a distance of 24.83 feet.  
N 62°-00'-10" E, a distance of 16.74 feet.  
S 88°-23'-17" E, a distance of 16.09 feet.  
S 81°-19'-20" E, a distance of 90.19 feet.  
S 76°-48'-46" E, a distance of 47.79 feet.  
S 32°-05'-30" E, a distance of 4.26 feet.  
S 77°-59'-27" E, a distance of 26.45 feet.  
N 38°-05'-40" E, a distance of 4.78 feet.  
S 86°-17'-56" E, a distance of 64.42 feet.  
S 75°-54'-15" E, a distance of 64.44 feet.  
S 47°-28'-53" E, a distance of 40.89 feet.  
S 13°-15'-37" E, a distance of 51.18 feet.  
S 1°-32'-31" W, a distance of 6.40 feet.  
S 19°-47'-24" W, a distance of 15.40 feet.  
S 21°-33'-17" W, a distance of 12.10 feet.  
S 56°-22'-06" E, a distance of 35.90 feet.  
S 72°-11'-30" E, a distance of 13.87 feet.  
N 85°-29'-26" E, a distance of 15.46 feet.  
N 69°-11'-03" E, a distance of 31.50 feet.  
N 50°-12'-16" E, a distance of 8.90 feet.  
N 57°-17'-35" E, a distance of 75.62 feet.  
N 19°-48'-54" E, a distance of 12.93 feet.  
N 40°-10'-51" W, a distance of 8.51 feet.  
N 45°-55'-26" E, a distance of 95.14 feet.  
N 48°-49'-22" E, a distance of 2.23 feet to the southwesterly corner of Lot 13 of the Marysville Allotment.

THENCE, with the southerly line of Lot 13, and the south line of the Robert E. Mosier 0.103 acre tract (O.R. 193, Pg. 475), and crossing County Highway 254, S 57°-34'-29" E, a distance of 279.50 feet to a concrete monument set 30.00 feet easterly at right angles from the center-line of County Highway 254, passing a concrete monument set for reference at 31.27 feet.

THENCE, parallel to and 30.00 feet easterly from the center-line of County Highway 254, passing along the west line of the O'Connor's Farm, Inc. 0.434 acre tract (O.R. 193, Pg. 732), S 32°-05'-58" W, a distance of 87.99 feet to a 5/8 inch iron rod set at the point of curvature of a non-tangent curve.

THENCE, parallel to and 30.00 feet distant from the center-line of County Highway 254, southerly along said curve, concave to the east, having a radius of 864.58 feet, a central angle of 39°-56'-22", and a chord distance of 590.55 feet bearing S 12°-07'-53" W, an arc distance of 602.68 feet to a concrete monument set.

THENCE, parallel to and 30.00 feet distant from the center-line of County Highway 254, S 7°-50'-24" E, a distance of 727.68 feet to a concrete monument set.

THENCE, S 82°-09'-36" W, a distance of 60.00 feet to a 5/8 inch iron bar set on the proposed west right-of-way of County Highway 254.

THENCE, with a westerly line of the O'Connor's Farm, Inc. 0.472 acre tract (O.R. 193, Pg. 732), S 31°-01'-55" W, a distance of 200.11 feet to a 5/8 inch iron bar found.

THENCE, continuing with a westerly line of the said 0.472 acre tract, S 44°-37'-21" W, a distance of 83.71 feet to the present shore line of Indian Lake, passing a 5/8 inch iron bar set at 74.19 feet.

THENCE, with said shore line, N 46°-23'-40" W, a distance of 49.35 feet to a point.

THENCE, with said shore line, N 70°-32'-25" W, a distance of 41.90 feet to a point.

THENCE, with said shore line, N 67°-58'-20" W, a distance of 46.93 feet to a point.

THENCE, N 66°-37'-40" W, a distance of 27.63 feet to a point that is 116 feet left of station 230+48.2 of the Wonders Field Book #5 as surveyed by James C. Wonders in 1892.

THENCE, N 33°-35'-15" W, a distance of 68.11 feet to a point on the existing shore line of said Indian Lake.

THENCE, with said shore line, N 44°-02'-45" E, a distance of 13.58 feet to a point.

THENCE, with said shore line, N 41°-38'-45" W, a distance of 40.12 feet to a point.

1D-3

EXHIBIT 'A' Page 3 of Four

INDEXED ON MAP

7011

THENCE, with said shore line, N 30°-45'-50" W, a distance of 27.92 feet to a point.

THENCE, with said shore line, N 35°-24'-50" W, a distance of 17.24 feet to a point.

THENCE, with said shore line, N 61°-50'-25" W, a distance of 17.33 feet to a point in the projection of the easterly line of the aforementioned Breezy Way.

THENCE, with said projection and the easterly line of said Breezy Way, N 15°-10'-47" W, a distance of 251.56 feet to a 5/8 inch iron bar set, passing a 5/8 inch iron bar set at 10.00 feet and a concrete monument set for reference at 176.47 feet.

THENCE, with the easterly line of Breezy Way, N 13°-08'-47" E, a distance of 384.75 feet to a 5/8 inch iron bar set at the northeast corner of existing Breezy Way as platted in the aforesaid O'Connor's Allotment No. 2.

THENCE, with the north line of Breezy Way, N 77°-03'-58" W, a distance of 30.00 feet to the POINT OF BEGINNING.

Containing 18.393 acres of which there is the following acreage breakdown:

0.804 acre is out of the O'Connor Farm, Inc. original 130.0 acre tract of which 0.683 acre is within the present highway right-of-way (50 feet wide).

14.139 acres are out of the O'Connor's Landing, Inc. original 18.58 acre tract of which 0.444 acre is within the present highway right-of-way.

1.956 acres are out of the O'Connor's Landing, Inc. original 2.39 acre tract of which there are 0.525 acre within the highway right-of-way.

1.494 acres remainder include all of the aforementioned four O'Connor's Landing, Inc. Lakelands tracts.

The basis for bearings is based upon the south line of Lot 13 of the Marysville Allotment being S 57°-34'-29" E, and all other bearings are from record and field data supplied by others.

1D-4

ED ON MAP  
7011



Description prepared by:

*Jeffrey I. Lee*

Jeffrey I. Lee  
Professional Surveyor 6359  
June 22, 1993

L 2053

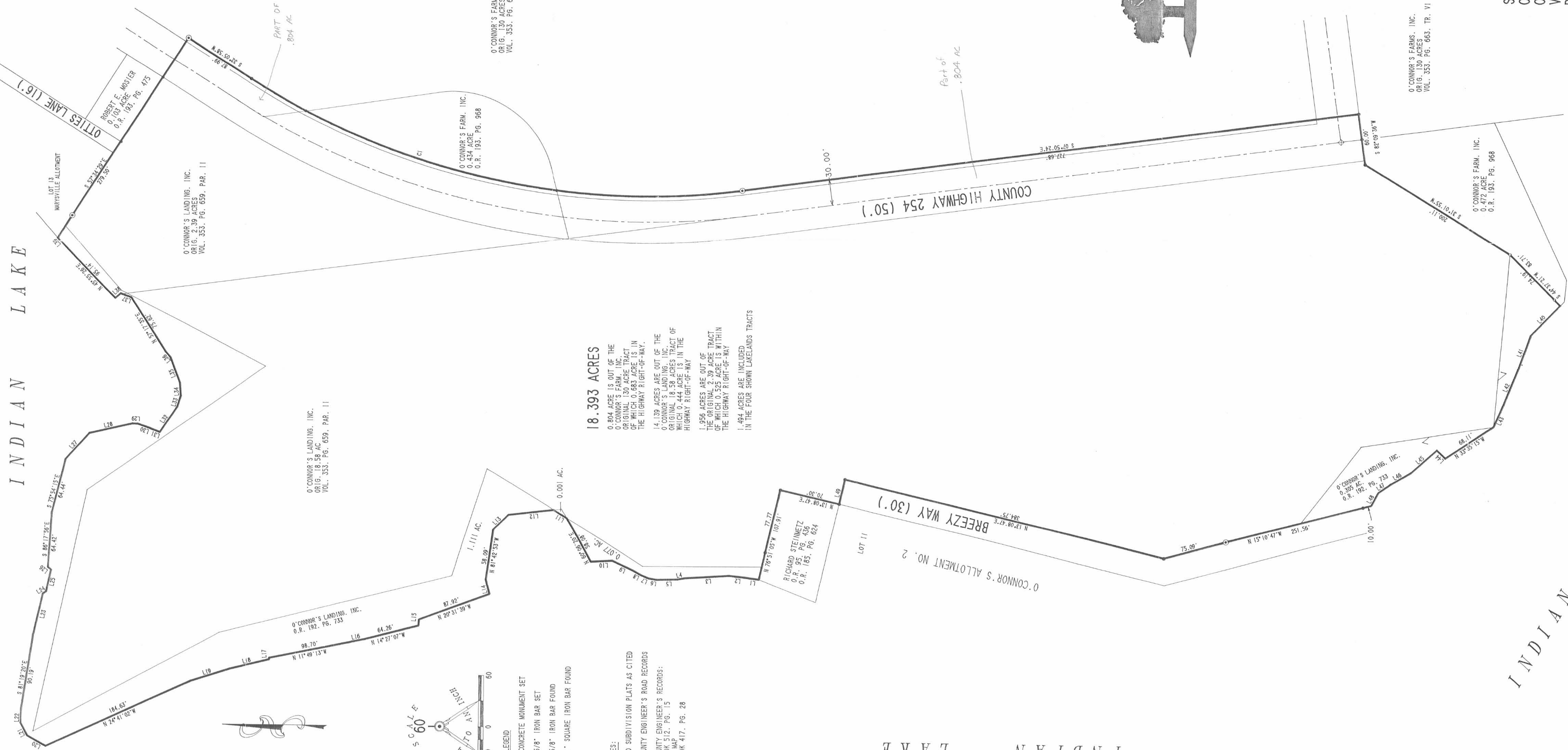
EXHIBIT 'A' Page 4 of Four

ORIGINAL STAMP IN GREEN

INDIAN LAKE

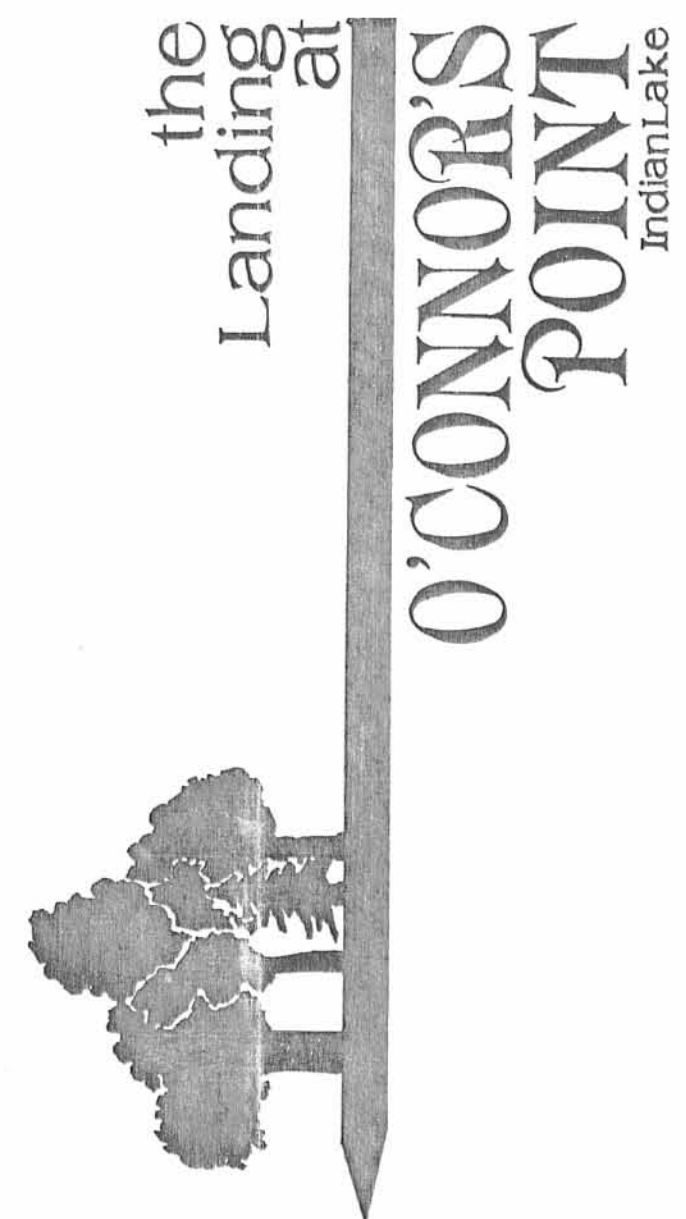
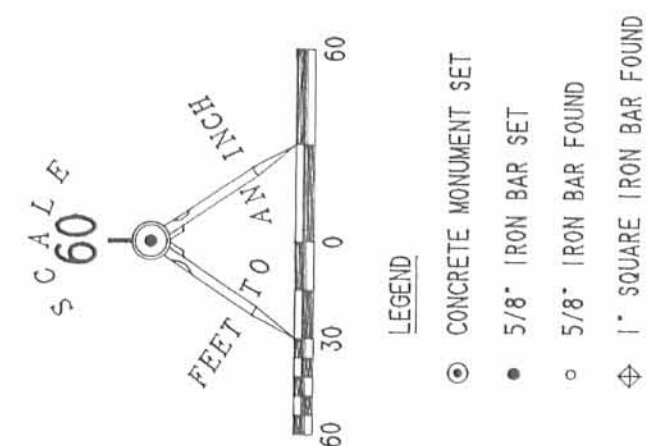
CURVE DELTA ANGLE 39°58'22" RADIUS 864.38' ARC TANGENT 314.17' CHORD 590.35' CHORD BEARING 127°07'33"W

LINE	BEARING	DISTANCE	LINE	BEARING	DISTANCE
L 1	N 07°48'32"E	17.19'	L 26	N 30°05'40"E	4.78'
L 2	N 09°12'41"E	18.26'	L 27	S 47°28'33"E	40.89'
L 3	N 10°07'59"W	15.25'	L 28	S 01°32'31"E	51.18'
L 4	N 11°00'59"W	7.65'	L 29	S 19°47'24"W	15.40'
L 5	N 01°50'29"W	24.86'	L 30	S 21°33'17"W	12.10'
L 6	N 09°38'20"E	9.73'	L 31	S 56°22'06"E	35.80'
L 7	N 29°07'32"E	10.39'	L 32	S 72°11'20"E	13.87'
L 8	N 29°08'41"E	10.02'	L 33	N 89°29'20"E	15.46'
L 9	N 09°08'41"E	10.02'	L 34	N 89°29'20"E	15.46'
L 10	N 03°27'24"W	25.37'	L 35	N 50°12'14"E	9.19'
L 11	N 31°27'44"E	16.12'	L 36	N 19°48'54"E	12.83'
L 12	N 07°02'48"W	53.57'	L 37	N 49°10'51"W	8.51'
L 13	N 44°53'23"W	24.90'	L 38	N 46°49'22"E	2.23'
L 14	S 75°23'57"W	7.22'	L 39	N 46°23'50"W	49.35'
L 15	N 85°12'10"W	1.70'	L 40	N 87°32'26"W	41.90'
L 16	S 85°26'32"W	1.70'	L 41	N 87°32'26"W	41.90'
L 17	N 47°01'23"W	48.15'	L 42	N 60°37'40"W	27.63'
L 18	N 18°03'37"W	48.20'	L 43	N 44°02'45"E	13.58'
L 19	N 28°49'41"E	24.83'	L 44	N 41°38'45"W	40.12'
L 20	N 28°49'41"E	24.83'	L 45	N 30°45'59"W	27.92'
L 21	N 62°00'10"E	16.74'	L 46	N 30°45'59"W	17.24'
L 22	N 62°00'10"E	16.74'	L 47	N 25°24'59"W	17.24'
L 23	S 32°05'30"E	4.28'	L 48	N 27°04'59"W	30.90'
L 24	S 32°05'30"E	4.28'	L 49	N 27°04'59"W	30.90'
L 25	S 77°59'27"E	26.45'			



**18.393 ACRES**  
 0.804 ACRE IS OUT OF THE ORIGINAL 130 ACRE TRACT OF WHICH 0.682 ACRE IS IN THE HIGHWAY RIGHT-OF-WAY.  
 14.139 ACRES ARE OUT OF THE O'CONNOR'S LANDING, INC. ORIGINAL 14.30 ACRES TRACT OF WHICH 14.30 ACRES IS IN THE HIGHWAY RIGHT-OF-WAY.  
 1.956 ACRES ARE OUT OF THE ORIGINAL 2.00 ACRES TRACT OF WHICH 1.056 ACRES IS IN THE HIGHWAY RIGHT-OF-WAY.  
 1.494 ACRES ARE INCLUDED IN THE FOUR SHOWN LAKELANDS TRACTS

**REFERENCES:**  
 DEEDS AND SUBDIVISION PLATS AS CITED  
 LOGAN COUNTY ENGINEER'S ROAD RECORDS  
 LOGAN COUNTY ENGINEER'S RECORDS:  
 FIELD BOOK 512, PG. 15  
 1880, TAX MAP  
 FIELD BOOK 417, PG. 28



SURVEY OF 18.393 ACRES FOR  
 O'CONNOR'S LANDING, INC. AND  
 O'CONNOR'S FARM, INC.  
 VIRGINIA MILITARY SURVEY 9968  
 RICHLAND TOWNSHIP  
 LOGAN COUNTY, OHIO



SURVEYED BY:  
*Leslie H. Geslin*  
 LESLIE H. GESLIN  
 PROFESSIONAL SURVEYOR 5248  
 APRIL 2, 1993

INDEXED ON MAP  
 T.C.11

CALCULATIONS AND PLATTING SERVICES BY:  
**LEE SURVEYING & MAPPING CO.**  
 10000 W. 10th Avenue  
 BELLEVILLE, OHIO 45311  
 (513) 593-7335  
 D. 208 OCONSTRM L 2053-1

Received 4-22-93 OK gch



# Lee Surveying and Mapping Co.



Farm Surveys • Lot Surveys • Topography • Subdivisions • Construction Layout

143 EAST COLUMBUS AVENUE  
BELLEFONTAINE, OHIO 43311

(513) 593-7335

JEFFREY I. LEE, P.S.

## O'CONNOR'S Reservoir Lands Parcel 68-1S

Lying in Virginia Military Survey 9968, Richland Township, Logan County, Ohio.

Being all of that tract of land as identified as Lake Lands Parcel 68-1S on sheet 2 of 9, titled, "INDIAN LAKE, LOGAN COUNTY, RICHLAND TOWNSHIP, O'CONNOR POINT AREA, PROPERTY/PLANIMETRIC" and dated 9-1-78, as filed in the Logan County Engineer's Map Room and being more particularly described as follows:

Beginning at the northeast corner of Lot No. 11, O'Connor's Allotment No. 2, Richland Township, Logan County, Ohio as recorded in Plat Cabinet A, Slide 237, in the Logan County Recorder's Office.

THENCE, N 13°-08'-47" E, with the westerly right-of-way line extended of Breezy Way, said westerly right-of-way line being the east line of that real estate transferred to George E. Steinmetz and Elsie L. Steinmetz, as recorded in Deed Book 195, Page 540, a distance of 70.30 feet to the northeast corner of the said Steinmetz real estate.

THENCE, N 76°-51'-05" W, with the north line of the said Steinmetz real estate 92.47 feet to the intersection of the said north line of the Steinmetz real estate and the Property Line of the State of Ohio and being the 50 feet contour line as determined by the J.C. Wonders Survey dated 1892.

THENCE, N 0°-15'-21" W, with the said State Property Line, a distance of 140.34 feet.

THENCE, N 31°-29'-11" E, with the said State Property Line, a distance of 105.04 feet to the edge of the water and the TRUE POINT OF BEGINNING.

THENCE, continuing with the State Property Line, N 31°-27'-44" E, a distance of 18.12 feet to the edge of the water.


THENCE, with the edge of the water, S 7°-06'-22" E, a distance of 9.43 feet.

THENCE, with the edge of the water, S 60°-08'-35" W, a distance of 12.25 feet to the point of beginning.

Containing an area of 53 square feet or 0.001 acre.

The basis for bearings is based upon the south line of Lot 13 of the Marysville Allotment being S 57°-34'-29" E, and all other bearings are from record and field data supplied by others.

Description prepared by:

  
Jeffrey I. Lee  
Professional Surveyor 6359  
April 21, 1993



ORIGINAL STAMP IN GREEN

INDEXED ON MAP  
7011

2D-1



# Lee Surveying and Mapping Co.



Farm Surveys • Lot Surveys • Topography • Subdivisions • Construction Layout

143 EAST COLUMBUS AVENUE  
BELLEFONTAINE, OHIO 43311

(513) 593-7335

JEFFREY I. LEE, P.S.

## O'CONNOR'S Reservoir Lands Parcel 68-2A

Lying in Virginia Military Survey 9968, Richland Township, Logan County, Ohio.

Being all of that tract of land as identified as Lake Lands Parcel 68-2A on sheet 2 of 9, titled, "INDIAN LAKE, LOGAN COUNTY, RICHLAND TOWNSHIP, O'CONNOR POINT AREA, PROPERTY/PLANIMETRIC" and dated 9-1-78, as filed in the Logan County Engineer's Map Room and being more particularly described as follows:

Beginning at the northeast corner of Lot No. 11, O'Connor's Allotment No. 2, Richland Township, Logan County, Ohio as recorded in Plat Cabinet A, Slide 237, in the Logan County Recorder's Office.

THENCE, N 13°-08'-47" E, with the westerly right-of-way line extended of Breezy Way, said westerly right-of-way line being the east line of that real estate transferred to George E. Steinmetz and Elsie L. Steinmetz, as recorded in Deed Book 195, Page 540, a distance of 70.30 feet to the northeast corner of the said Steinmetz real estate.

THENCE, N 76°-51'-05" W, with the north line of the said Steinmetz real estate 92.47 feet to the THE TRUE POINT OF BEGINNING at intersection of the said north line of the Steinmetz real estate and the Property Line of the State of Ohio and being the 50 feet contour line as determined by the J.C. Wonders Survey dated 1892.

THENCE, continuing N 76°-51'-05" W, along the said north line of the Steinmetz real estate, 15.43 feet to the edge of the water.

THENCE, with the edge of the water the following eleven courses:

N 7°-48'-32" E, a distance of 17.19 feet.

N 6°-12'-41" E, a distance of 18.26 feet.

N 3°-41'-21" W, a distance of 52.33 feet.

N 11°-07'-59" W, a distance of 7.62 feet.

N 1°-50'-26" W, a distance of 24.86 feet.

N 9°-38'-20" E, a distance of 9.73 feet.

N 23°-07'-52" E, a distance of 10.30 feet.

N 29°-08'-41" E, a distance of 10.02 feet.

N 24°-24'-30" E, a distance of 27.11 feet.

N 3°-27'-24" W, a distance of 25.27 feet.

N 60°-06'-20" E, a distance of 58.08 feet to the intersection of the said State Property Line and the edge of the water.

THENCE, S 31°-29'-11" W, with the said State Property Line, a distance of 105.04 feet.

THENCE, S 0°-15'-21" E, with the said State Property Line, a distance of 140.34 feet to the point of beginning.

Containing an area of 3374 square feet or 0.077 acre.

The basis for bearings is based upon the south line of Lot 13 of the Marysville Allotment being S 57°-34'-29" E, and all other bearings are from record and field data supplied by others.

Description prepared by:

Jeffrey I. Lee  
Professional Surveyor 6359  
April 21, 1993



FIELD ON MAP  
7011

2D-2

ORIGINAL STAMP IN GREEN



# Lee Surveying and Mapping Co.



Farm Surveys • Lot Surveys • Topography • Subdivisions • Construction Layout

143 EAST COLUMBUS AVENUE  
BELLEFONTAINE, OHIO 43311

(513) 593-7335

JEFFREY I. LEE, P.S.

## O'CONNOR'S Reservoir Lands Parcel 68-3A

Lying in Virginia Military Survey 9968, Richland Township, Logan County, Ohio.

Being all of that tract of land as identified as Lake Lands Parcel 68-3A on sheet 3 of 9, titled, "INDIAN LAKE, LOGAN COUNTY, RICHLAND TOWNSHIP, O'CONNOR POINT AREA, PROPERTY/PLANIMETRIC" and dated 9-1-78, as filed in the Logan County Engineer's Map Room and being more particularly described as follows:

Beginning at the southeasterly corner of Lot No. 13, Marysville Allotment, Richland Township, Logan County, Ohio as recorded in Plat Cabinet A, Slide 135, in the Logan County Recorder's Office.

THENCE, N 57°-34'-29" W, with the southerly line of said Lot No. 13, a distance of 101.91 feet to the TRUE POINT OF BEGINNING at the intersection of the said southerly line of Lot 13 and the State of Ohio Property Line and being the 50 feet contour line as determined by the J.C. Wonders Survey dated 1892.

THENCE, with the State Property Line the following eight courses:

- S 48°-36'-36" W, a distance of 99.77 feet.
- S 27°-16'-26" W, a distance of 190.76 feet.
- N 35°-19'-00" W, a distance of 254.92 feet.
- N 77°-53'-11" W, a distance of 289.45 feet.
- S 28°-35'-04" E, a distance of 246.03 feet.
- S 14°-19'-12" E, a distance of 281.35 feet.
- S 72°-03'-07" E, a distance of 132.20 feet.
- S 31°-27'-44" W, a distance of 92.09 feet to the edge of the water.

THENCE, with the edge of the water the following thirty-eight courses:

- N 7°-02'-48" W, a distance of 53.57 feet.
- N 44°-53'-23" W, a distance of 24.90 feet.
- N 81°-42'-53" W, a distance of 58.09 feet.
- S 75°-23'-57" W, a distance of 18.00 feet.
- N 20°-31'-39" W, a distance of 87.92 feet.
- N 85°-12'-10" W, a distance of 7.22 feet.
- N 14°-27'-07" W, a distance of 64.26 feet.
- N 12°-02'-31" W, a distance of 16.38 feet.
- N 11°-49'-13" W, a distance of 98.70 feet.
- S 85°-26'-52" W, a distance of 1.70 feet.
- N 14°-01'-23" W, a distance of 48.15 feet.
- N 18°-03'-37" W, a distance of 48.20 feet.
- N 24°-41'-02" W, a distance of 184.63 feet.
- N 28°-49'-41" E, a distance of 24.83 feet.
- N 62°-00'-10" E, a distance of 16.74 feet.
- S 88°-23'-17" E, a distance of 16.09 feet.
- S 81°-19'-20" E, a distance of 90.19 feet.
- S 76°-48'-46" E, a distance of 47.79 feet.
- S 32°-05'-30" E, a distance of 4.26 feet.
- S 77°-59'-27" E, a distance of 26.45 feet.
- N 38°-05'-40" E, a distance of 4.78 feet.
- S 86°-17'-56" E, a distance of 64.42 feet.
- S 75°-54'-15" E, a distance of 64.44 feet.
- S 47°-28'-53" E, a distance of 40.89 feet.
- S 13°-15'-37" E, a distance of 51.18 feet.
- S 1°-32'-31" W, a distance of 6.40 feet.
- S 19°-47'-24" W, a distance of 15.40 feet.
- S 21°-33'-17" W, a distance of 12.10 feet.
- S 56°-22'-06" E, a distance of 35.90 feet.
- S 72°-11'-30" E, a distance of 13.87 feet.
- N 85°-29'-26" E, a distance of 15.46 feet.
- N 69°-11'-03" E, a distance of 31.50 feet.
- N 50°-12'-16" E, a distance of 8.90 feet.
- N 57°-17'-35" E, a distance of 75.62 feet.

INDEXED ON MAP  
7011

2D-3



N 19°-48'-54" E, a distance of 12.93 feet.

N 40°-10'-51" W, a distance of 8.51 feet.

N 45°-55'-26" E, a distance of 95.14 feet.

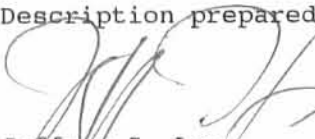
N 48°-49'-22" E, a distance of 2.23 feet to the southwesterly corner of  
aforementioned Lot 13.

THENCE, with the southerly line of Lot 13, S 57°-34'-29" E, a distance of  
16.59 feet to the point of beginning.

Containing an area of 48390 square feet or 1.111 Acres

The basis for bearings is based upon the south line of Lot 13 of the  
Marysville Allotment being S 57°-34'-29" E, and all other bearings are from record  
and field data supplied by others.

Description prepared by:

  
Jeffrey I. Lee  
Professional Surveyor 6359  
April 21, 1993



L 2053

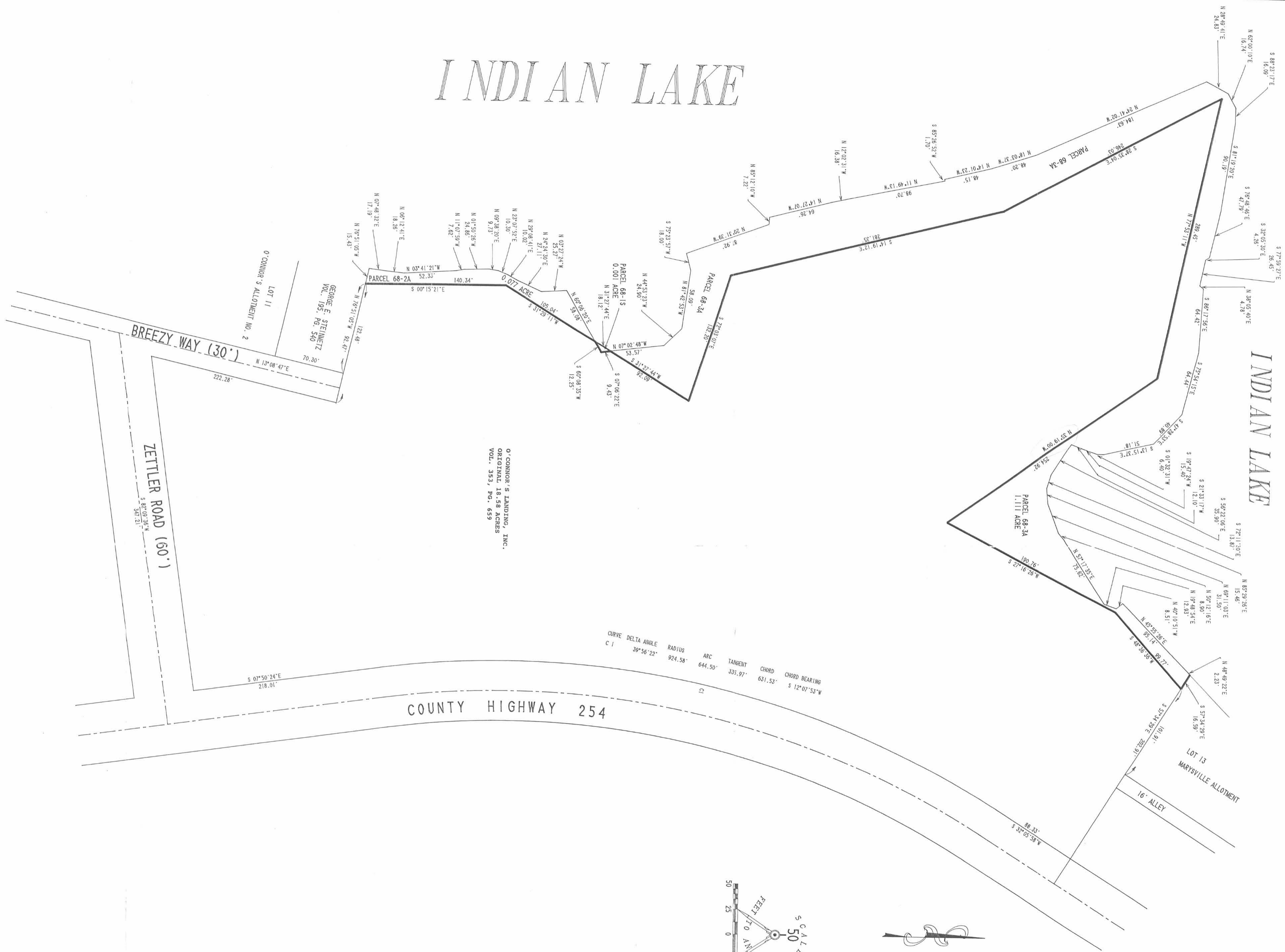
ORIGINAL STAMP IN GREEN

INDEXED ON MAP  
7011

2D-4

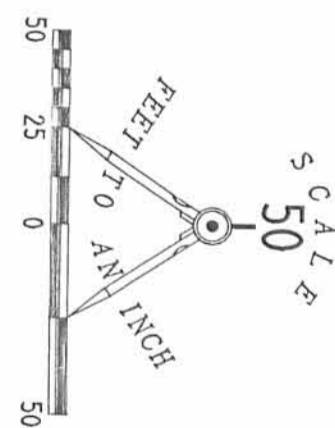
# INDIAN LAKE

# INDIAN LAKE



REFERENCES:  
 LOGAN COUNTY RECORDER'S RECORDS:  
 MARYSVILLE ALLOTMENT - PLAT CABINET A, SLIDE 135  
 O'CONNOR'S ALLOTMENT NO. 2 - PLAT CABINET A, SLIDE 237  
 OHIO RESERVOIR LANDS SURVEY PLATS  
 BY KOHLI & KALLHER ASSOC., LIMITED - 10 MAPS  
 LES GESLIN, P.S. FIELD NOTES OF SURVEY

PLAT OF STATE OF OHIO LAKE LANDS  
 LOTS 68-1S, 68-2A, AND 68-3A  
 VIRGINIA MILITARY SURVEY 9968  
 RICHLAND TOWNSHIP  
 LOGAN COUNTY, OHIO



2 WORKING DAYS  
 BEFORE YOU DIG  
 CALL TOLL FREE 800-382-2764  
 OR VISIT US ONLINE AT WWW.OHIO.DIG.IT

PLATTED FROM RECORDS AND FIELD SURVEY  
 NOTES, BY OTHERS:  
 JEFFREY L. LEE  
 PROFESSIONAL SURVEYOR 6358  
 APRIL 21, 1993  
 LEE SURVEYING & MAPPING CO.  
 143 East Columbus Avenue  
 Bellefontaine, Ohio 43111  
 (613) 593-7335

Received 8-31-94 of gch

**LESLIE H. GEESLIN**

REGISTERED SURVEYOR 5248

P. O. BOX 274

RUSHSVLVANIA, OHIO 43347

TELEPHONE: (513) 468-2793

**O'CONNOR SURVEY**

August 26, 1994

The following described real estate situated in the State of Ohio, County of Logan, Township of Richland, being part of Virginia Military Survey 9968 and more particularly described as follows:

Beginning at a 5/8 inch iron bar found in the west right of way of County Highway 254 at the southeast corner of Lot 26 in O'Connor's Point Allotment No. 1.

Thence with said right of way S. 7° 50' 24" E. 79.67 feet to a 5/8 inch iron bar found at the northwest corner of O'Connor's Farm, Inc.'s 0.472 acre tract as described in O. R. Vol. 193 Page 732.

Thence with the west line of said O'Connor's Farm S. 31° 01' 55" W. 200.11 feet to a 5/8 inch iron bar found.

Thence continuing with said west line S. 44° 37' 21" W. 83.71 feet to a point in the shoreline of Indian Lake, passing a 5/8 inch iron bar found at 74.19 feet.

Thence with said shoreline N. 46° 23' 44" W. 49.36 feet to a point that is S. 34° 22' 46" E. 11.46 feet from a 5/8 inch iron bar set.

Thence again with said shoreline N. 70° 32' 25" W. 41.90 feet to a point that is N. 84° 24' 39" W. 46.20 feet from a 5/8 inch iron bar set.

Thence continuing with said shoreline N. 67° 58' 19" W. 46.92 feet to a point that is S. 20° 48' 46" E. 37.96 feet from a 5/8 inch iron bar set.

Thence continuing with said shoreline N. 66° 37' 37" W. 27.63 feet to a point that is S. 25° 50' 09" W. 27.25 feet from a 5/8 inch iron bar set.

Thence continuing with said shoreline N. 33° 35' 15" W. 68.11 feet to a point that is N. 56° 58' 19" W. 59.10 feet from a 5/8 inch iron bar set.

Thence continuing with said shoreline N. 44° 02' 43" E. 13.58 feet to a point that is S. 31° 05' 04" W. 21.37 feet from a 5/8 inch iron bar set.

Thence continuing with said shoreline N. 41° 38' 43" W. 40.12 feet to a point that is N. 72° 46' 59" W. 39.46 feet from a 5/8 inch iron bar set.

Thence continuing with said shoreline N. 30° 45' 47" W. 27.92 feet to a point that is S. 21° 24' 29" E 26.43 feet from a 5/8 inch iron bar set.

RIA:\07\OCONNOR.SAM



3D-1

Thence continuing with said shoreline N. 35° 24' 50" W. 17.24 feet to a point that is S. 1° 51' 09" W. 10.56 feet from a 5/8 inch iron bar set.

Thence continuing with said shoreline N. 61° 51' 13" W. 17.34 feet to a point at the southeast corner of Breezy Way that is S. 15° 10' 47" E. 10.00 feet from a 5/8 inch iron bar found.

Thence with the east line of said Breezy Way N. 15° 10' 47" W. 176.47 feet to a concrete monument found at the southwest corner of Lot 30 in O'Connor's Point Allotment No. 1, passing a 5/8 inch iron bar found at 10.00 feet.

Thence with the south line of said Lot 30 on a 25 foot radius curve to the left, the chord of which measures S. 56° 40' 39" E. 33.13 feet, an arc distance of 36.21 feet to a 5/8 inch iron bar found.

Thence continuing with said south line on a 180.00 foot radius curve to the right the chord of which measures S. 79° 28' 47" E. 115.39 feet, an arc distance of 117.47 feet to a 5/8 inch iron bar found.

Thence again with said south line N. 42° 24' 14" E. 147.61 feet to a 5/8 inch iron bar found at the northwest corner of Lot 25 of said Allotment.

Thence with the west line of said Lot 25 and the west line of Lot 26 of said Allot. S. 33° 41' 28" E. 270.09 feet to a 5/8 inch iron bar found at the south corner of said Lot 26, passing a 5/8 inch iron bar found a 110.98 feet.

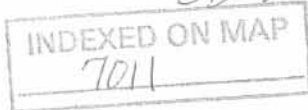
Thence with the east line of said Lot 26 N. 31° 01' 55" E. 88.00 feet to the place of beginning.

Containing 2.468 acres more or less.

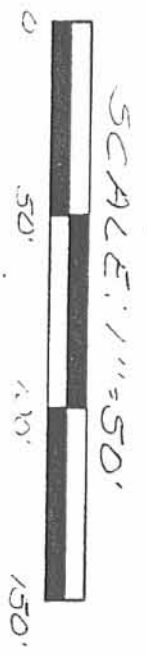
The above described 2.468 acre tract being the remainder of O'Connor's Landing, Inc.'s 18.393 acre tract as described in O. R. Vol. 194 Page 235.

Bearings are based on an assumed bearing (S. 31° 01' 55" W.) for the west line of O'Connor's Farm, Inc.'s 0.472 acre tract as described in O. R. Vol. 193 Page 732 in this field survey by Leslie H. Geeslin, Reg. Surveyor 5248 on August 26, 1994.

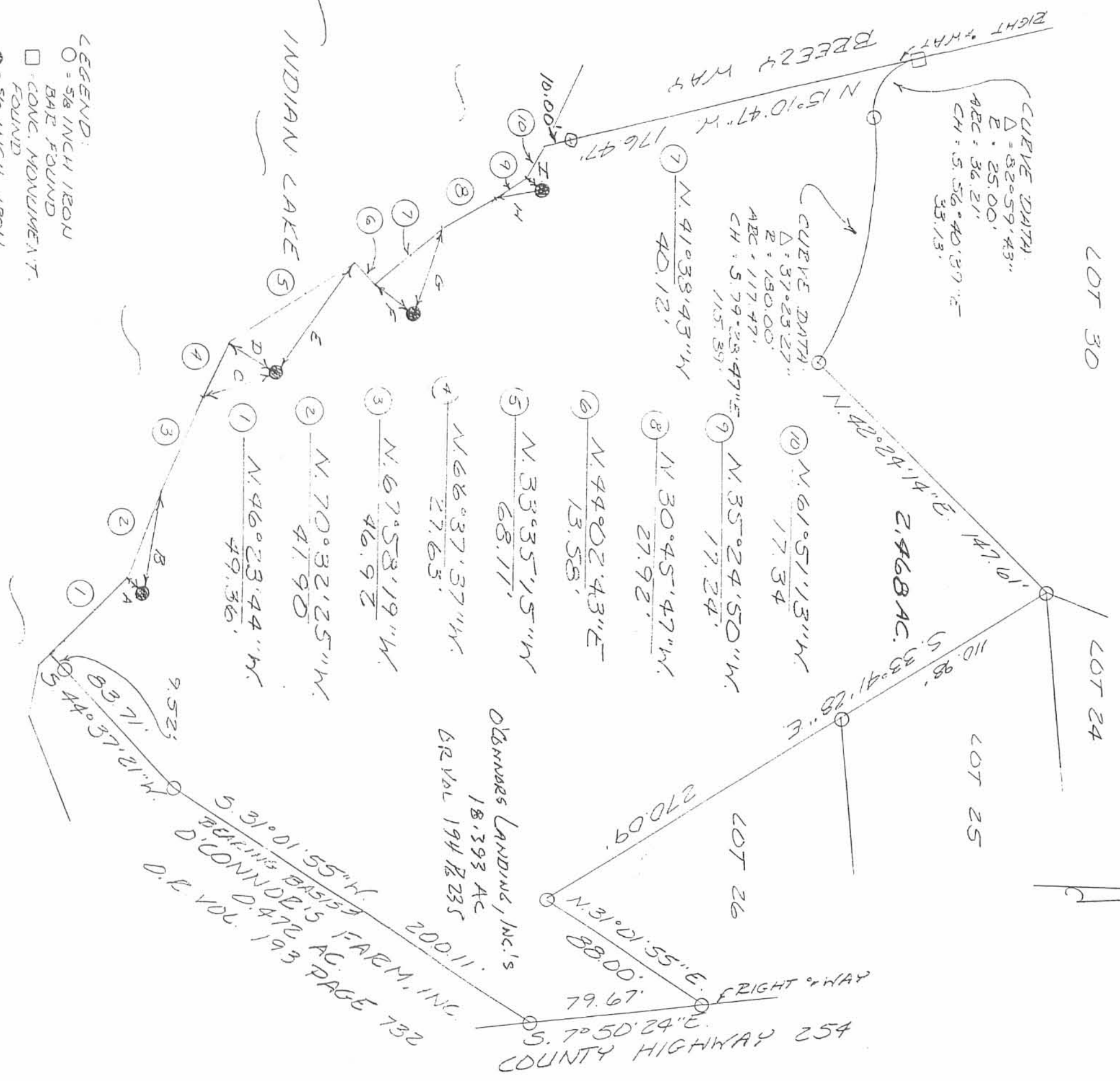
RIA:\07\OCONNOR.SAM



*Leslie H. Geeslin*



O'CONNOR'S POINT ALLOTMENT NO. 1



SURVEY OF 2468 ACRES & VIRGINIA MILITARY SURVEY 9968, EICHLEND TOWNSHIP LOGAN COUNTY, OHIO FOR MARK O'CONNOR ON AUGUST 26, 1944

- A: S. 34° 22' 46" E. 11.46'
- B: N. 84° 24' 39" W. 46.20'
- C: S. 20° 48' 46" E. 37.96'
- D: S. 25° 50' 09" W. 27.25'
- E: N. 56° 58' 19" W. 59.10'
- F: S. 31° 01' 55" W. 21.37'
- G: N. 72° 46' 59" W. 39.46'
- H: S. 21° 24' 29" E. 26.43'
- I: S. 10° 51' 09" W. 40.56'



INDEXED ON MAP 7011

3P

Leslie H. Geeslin  
 Registered Surveyor  
 No. 5248  
 Ohio

RECID 3-3-08 SMY dk

# Lee Surveying and Mapping Co., Inc.

Land Surveys • Topography • Subdivisions • Construction Layout

117 N. Madriver St.  
Bellefontaine OH 43311



Phone: (937) 593-7335  
Fax: (937) 593-7444

## O'CONNOR'S FARMS, INC. 0.491 ACRE

Lying in Virginia Military Survey 9968, Richland Township, Logan County, Ohio.

Being all of the O'Connor's Farms, Inc., 0.472 acre tract as deeded and described in Official Record 193, Page 968, Tract I of the Logan County Records of Deeds and being more particularly described as follows:

Commencing on a 1-1/2 inch square iron bar found at an angle point in County Highway 254 at Station 52+58.50 (Logan County Engineer's Field Book 500, Page 11).

THENCE, with west boundary line of the O'Connor Farms, Inc., original 130 acre tract (Vol. 353, Pg. 663, Tract VI), S 9°-47'-40"E, a distance of 25.03 feet to a 5/8 inch iron rod set on the south right-of-way of County Highway 254 at the TRUE POINT OF BEGINNING.

THENCE, with the west line of the said original 130 acre tract, S 9°-47'-40"E, a distance of 157.05 feet to a 5/8 inch iron rod set.

THENCE, with the original deeded shore line of Indian Lake, the following three courses:

S 66°-11'-53"W, a distance of 208.00 feet to a point, referenced by a 5/8 inch iron rod set bearing N 9°-31'-32"W, a distance of 7.12 feet.

N 83°-57'-28"W, a distance of 25.65 feet to a point, referenced by a 5/8 inch iron rod set bearing N 35°-51'-29"E, a distance of 3.83 feet.

N 46°-08'-54"W, a distance of 6.42 feet to a point.

THENCE, with the easterly line of the Bay Village Association, Inc., 2.468 acre tract (O.R. 238, Pg. 751), the following two courses:

N 44°-52'-11"E, a distance of 83.71 feet to a 5/8 inch iron rod set, passing a 5/8 inch iron rod set at 8.86 feet.

N 31°-40'-26"E, a distance of 197.93 feet to a 5/8 inch iron rod set on the south right-of-way of County Highway 254.

THENCE, with the south right-of-way of County Highway 254 (60 feet wide northbound, 50 feet wide eastbound), N 82°-59'-18"E, a distance of 30.97 feet to the point of beginning.

Containing 0.491 acre.

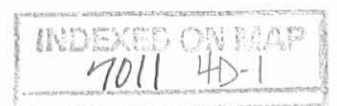
The basis for bearings is the north line of the State of Ohio, Department of Natural Resources 53 1/2 acre tract (O.R. 414, Pg. 832, Tract I), being S 82°-13'-54"W, and all other bearings are from angles and distances measured in a field survey by Lee Surveying and Mapping Co., Inc. on February 15, 2008.



ORIGINAL STAMP IN GREEN

Description prepared by:

William K. Bruce  
Professional Surveyor 7437  
February 18, 2008



4584018

REC'D 3-3-08 smjok

# Lee Surveying and Mapping Co., Inc.

Land Surveys • Topography • Subdivisions • Construction Layout

117 N. Madriver St.  
Bellefontaine OH 43311



Phone: (937) 593-7335  
Fax: (937) 593-7444

## INDIAN LAKE RESERVOIR LANDS 1.007 ACRES

Lying in Virginia Military Survey 9968, Richland Township, Logan County, Ohio.

Being out of the Indian Lake Reservoir Lands and being more particularly described as follows:

Commencing on a 1-1/2 inch square iron bar found at an angle point in County Highway 254 at Station 52+58.50 (Logan County Engineer's Field Book 500, Page 11).

THENCE, with the west boundary line of the O'Connor Farms, Inc., original 130 acre tract (Vol. 353, Pg. 663, Tract VI), S 9°-47'-40"E, a distance of 525.41 feet to a 5/8 inch iron rod set at the TRUE POINT OF BEGINNING, passing 5/8 inch iron rods set at 25.03 feet and 182.08 feet.

THENCE, with the west line of the said original 130 acre tract, S 9°-47'-40"E, a distance of 30.48 feet to a 5/8 inch iron rod set on the State Line.

THENCE, with the State Line, the following four courses:

S 64°-39'-11"W, a distance of 278.23 feet to a 2 inch metal pipe found.

N 20°-40'-36"W, a distance of 246.99 feet to a 2 inch metal pipe found.

S 67°-24'-19"W, a distance of 42.58 feet to a 5/8 inch iron rod set.

N 88°-56'-33"W, a distance of 89.06 feet to a point on the shore line of Indian Lake, passing a 5/8 inch iron rod set at 74.93 feet.

THENCE, with the shore line of Indian Lake, the following six courses:

N 18°-27'-24"E, a distance of 34.70 feet to a point, referenced by a 5/8 inch iron rod set bearing S 45°-47'-46"E, a distance of 14.20 feet.

N 65°-13'-49"E, a distance of 69.97 feet to a point, referenced by a 5/8 inch iron rod set bearing S 35°-24'-43"E, a distance of 5.77 feet.

S 61°-38'-08"E, a distance of 73.90 feet to a point, referenced by a 2 inch metal pipe found bearing S 42°-04'-47"W, a distance of 16.71 feet.

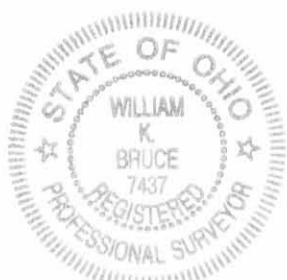
N 88°-56'-08"E, a distance of 133.12 feet to a point, referenced by a 5/8 inch iron rod set bearing S 18°-30'-44"W, a distance of 12.44 feet.

S 24°-13'-08"E, a distance of 151.44 feet to a point, referenced by a 5/8 inch iron rod set bearing N 50°-26'-16"W, a distance of 3.73 feet.

N 72°-00'-20"E, a distance of 133.60 feet to the point of beginning.

Containing 1.007 acres.

The basis for bearings is the north line of the State of Ohio, Department of Natural Resources 53 1/2 acre tract (O.R. 414, Pg. 832, Tract I), being S 82°-13'-54"W, and all other bearings are from angles and distances measured in a field survey by Lee Surveying and Mapping Co., Inc. on February 15, 2008.



ORIGINAL STAMP IN GREEN

Description prepared by:

*William K. Bruce*

William K. Bruce  
Professional Surveyor 7437  
February 18, 2008



4584018

REC'D 3-3-08 SMJ OK

# Lee Surveying and Mapping Co., Inc.

Land Surveys • Topography • Subdivisions • Construction Layout

117 N. Madriver St.  
Bellefontaine OH 43311



Phone: (937) 593-7335  
Fax: (937) 593-7444

## O'CONNOR'S LANDING, INC. 9.906 ACRES

Lying in Virginia Military Survey 9968, Richland Township, Logan County, Ohio.

Being all of the O'Connor's Landing, Inc., 10.35 acre tract as deeded and described in Volume 353, Page 659, Parcel I, Tract I of the Logan County Records of Deeds and being more particularly described as follows:

Commencing on a 1-1/2 inch square iron bar found at an angle point in County Highway 254 at Station 52+58.50 (Logan County Engineer's Field Book 500, Page 11).

THENCE, with the west boundary line of the O'Connor Farms, Inc., original 130 acre tract (Vol. 353, Pg. 663, Tract VI), S 9°-47'-40"E, a distance of 555.89 feet to a 5/8 inch iron rod set on the State Line at the TRUE POINT OF BEGINNING, passing 5/8 inch iron rods set at 25.03 feet, 182.08 feet and 525.41 feet.

THENCE, with the west line of the said original 130 acre tract, S 9°-47'-40"E, a distance of 970.71 feet to a 5/8 inch iron rod set.

THENCE, with the north line of the State of Ohio, Department of Natural Resources 53 1/2 acre tract (O.R. 414, Pg. 832, Tract I), S 82°-13'-54"W, a distance of 439.56 feet to a 10" Elm tree found on the State Line, passing a 2 inch metal pipe found at 427.00 feet.

THENCE, with the State Line, the following three courses:

N 11°-16'-59"W, a distance of 213.53 feet to a 5/8 inch iron rod set, passing a 5/8 inch iron rod set at 1.81 feet.

N 0°-16'-31"W, a distance of 170.88 feet to a 5/8 inch square iron bar found at Wonders Base Line Station 214+57.3.

N 31°-05'-21"W, a distance of 188.86 feet to a point on the shore line of Indian Lake, referenced by a 5/8 inch iron rod set bearing N 81°-30'-19"E, a distance of 10.00 feet.

THENCE, with the shore line of Indian Lake, N 8°-29'-41"W, a distance of 42.86 feet to a point on the State Line, referenced by a 5/8 inch iron rod set bearing N 81°-30'-19"E, a distance of 10.00 feet.

THENCE, with the State Line, N 6°-14'-20"E, a distance of 78.29 feet to a point on the shore line of Indian Lake, referenced by a 5/8 inch iron rod set bearing S 70°-45'-05"E, a distance of 10.00 feet.

THENCE, with the shore line of Indian Lake, the following two courses:

N 19°-14'-55"E, a distance of 156.33 feet to a point, referenced by a 5/8 inch iron rod set bearing S 68°-30'-30"E, a distance of 12.16 feet.

N 20°-33'-49"W, a distance of 12.58 feet to a point on the State Line, referenced by a 5/8 inch iron rod set bearing N 69°-18'-29"E, a distance of 19.83 feet.

THENCE, with the State Line, the following two courses:

N 18°-54'-15"E, a distance of 18.71 feet to a 5/8 inch iron rod set at Wonders Base Line Station 219+53.

N 25°-54'-34"W, a distance of 127.63 feet to a point on the shore line of Indian Lake, referenced by a 5/8 inch iron rod set bearing N 69°-26'-11"E, a distance of 10.00 feet.

THENCE, with the shore line of Indian Lake, the following two courses:

INDEXED ON MAP  
7011 4D-2



# Lee Surveying and Mapping Co., Inc.

Land Surveys • Topography • Subdivisions • Construction Layout

117 N. Madriver St.  
Bellefontaine OH 43311



Phone: (937) 593-7335  
Fax: (937) 593-7444

N 20°-33'-49"W, a distance of 164.54 feet to a point, referenced by a 5/8 inch iron rod set bearing N 72°-59'-17"E, a distance of 16.55 feet.

N 18°-27'-24"E, a distance of 5.38 feet to a point on the State Line.

THENCE, with the State Line, the following four courses:

S 88°-56'-33"E, a distance of 89.06 feet to a 5/8 inch iron rod set, passing a 5/8 inch iron rod set at 14.13 feet.

N 67°-24'-19"E, a distance of 42.58 feet to a 2 inch metal pipe found.

S 20°-40'-36"E, a distance of 246.99 feet to a 2 inch metal pipe found.

N 64°-39'-11"E, a distance of 278.23 feet to the point of beginning.

Containing 9.906 acres.

The basis for bearings is the north line of the State of Ohio, Department of Natural Resources 53 1/2 acre tract (O.R. 414, Pg. 832, Tract I), being S 82°-13'-54"W, and all other bearings are from angles and distances measured in a field survey by Lee Surveying and Mapping Co., Inc. on February 15, 2008.



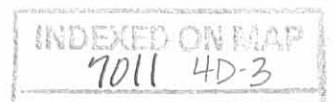
ORIGINAL STAMP IN GREEN

Description prepared by:

A handwritten signature in cursive script that reads 'William K. Bruce'.

William K. Bruce  
Professional Surveyor 7437  
February 18, 2008

4584018



REV'D 3-3-08 SMJ/OK

# Lee Surveying and Mapping Co., Inc.

Land Surveys • Topography • Subdivisions • Construction Layout

117 N. Madriver St.  
Bellefontaine OH 43311



Phone: (937) 593-7335  
Fax: (937) 593-7444

## INDIAN LAKE RESERVOIR LANDS 1.107 ACRES

Lying in Virginia Military Survey 9968, Richland Township, Logan County, Ohio.

Being out of the Indian Lake Reservoir Lands and being more particularly described as follows:

Commencing on a 1-1/2 inch square iron bar found at an angle point in County Highway 254 at Station 52+58.50 (Logan County Engineer's Field Book 500, Page 11).

THENCE, with the west boundary line of the O'Connor Farms, Inc., original 130 acre tract (Vol. 353, Pg. 663, Tract VI), S 9°-47'-40"E, a distance of 1526.60 feet to a 5/8 inch iron rod set, passing 5/8 inch iron rods set at 25.03 feet, 182.08 feet, 525.41 feet and 555.89 feet.

THENCE, with the north line of the State of Ohio, Department of Natural Resources 53 1/2 acre tract (O.R. 414, Pg. 832, Tract I), S 82°-13'-54"W, a distance of 439.56 feet to a 10" Elm tree found on the State Line at the TRUE POINT OF BEGINNING, passing a 2 inch metal pipe found at 427.00 feet.

THENCE, with the north line of the said 53 1/2 acre tract extended, S 82°-13'-54"W, a distance of 245.42 feet to a point on the shore line of Indian Lake, passing a 5/8 inch iron rod set at 236.81 feet.

THENCE, with the shore line of Indian Lake, the following six courses:

N 1°-53'-39"E, a distance of 214.57 feet to a point, referenced by a 5/8 inch iron rod set bearing S 1°-31'-26"E, a distance of 15.64 feet.

S 66°-59'-21"E, a distance of 54.48 feet to a point, referenced by a 5/8 inch iron rod set bearing S 18°-06'-58"E, a distance of 15.17 feet.

N 64°-44'-55"E, a distance of 136.53 feet to a point, referenced by a 5/8 inch iron rod set bearing S 66°-52'-42"E, a distance of 22.47 feet.

N 5°-21'-16"E, a distance of 164.10 feet to a point, referenced by a 5/8 inch square iron bar found at Wonders Base Line Station 214+57.3 bearing S 73°-42'-28"E, a distance of 4.72 feet.

N 32°-02'-54"W, a distance of 170.86 feet to a point, referenced by a 5/8 inch iron rod set bearing N 54°-46'-13"E, a distance of 8.41 feet.

N 8°-29'-41"W, a distance of 15.76 feet to a point on the State Line, referenced by a 5/8 inch iron rod set bearing N 81°-30'-19"E, a distance of 10.00 feet.

THENCE, with the State Line, the following three courses:

S 31°-05'-21"E, a distance of 188.86 feet to a 5/8 inch square iron bar found at Wonders Base Line Station 214+57.3.

S 0°-16'-31"E, a distance of 170.88 feet to a 5/8 inch iron rod set.



# Lee Surveying and Mapping Co., Inc.

Land Surveys • Topography • Subdivisions • Construction Layout

117 N. Madriver St.  
Bellefontaine OH 43311



Phone: (937) 593-7335  
Fax: (937) 593-7444

S 11°-16'-59"E, a distance of 213.53 feet to the point of beginning, passing a 5/8 inch iron rod set at 211.72 feet.

Containing 1.107 acres.

The basis for bearings is the north line of the State of Ohio, Department of Natural Resources 53 1/2 acre tract (O.R. 414, Pg. 832, Tract I), being S 82°-13'-54"W, and all other bearings are from angles and distances measured in a field survey by Lee Surveying and Mapping Co., Inc. on February 15, 2008.



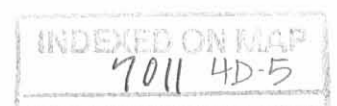
ORIGINAL STAMP IN GREEN

Description prepared by:

*William K. Bruce*

William K. Bruce  
Professional Surveyor 7437  
February 18, 2008

4584018



REVISED 3-3-08 SWM OK

# Lee Surveying and Mapping Co., Inc.

Land Surveys • Topography • Subdivisions • Construction Layout

117 N. Madriver St.  
Bellefontaine OH 43311



Phone: (937) 593-7335  
Fax: (937) 593-7444

## INDIAN LAKE RESERVOIR LANDS 0.009 ACRE

Lying in Virginia Military Survey 9968, Richland Township, Logan County, Ohio.

Being out of the Indian Lake Reservoir Lands and being more particularly described as follows:

Commencing on a 1-1/2 inch square iron bar found at an angle point in County Highway 254 at Station 52+58.50 (Logan County Engineer's Field Book 500, Page 11).

THENCE, with the west boundary line of the O'Connor Farms, Inc., original 130 acre tract (Vol. 353, Pg. 663, Tract VI), S 9°-47'-40"E, a distance of 1526.60 feet to a 5/8 inch iron rod set, passing 5/8 inch iron rods set at 25.03 feet, 182.08 feet, 525.41 feet and 555.89 feet.

THENCE, with the north line of the State of Ohio, Department of Natural Resources 53 1/2 acre tract (O.R. 414, Pg. 832, Tract I), S 82°-13'-54"W, a distance of 439.56 feet to a 10" Elm tree found on the State Line, passing a 2 inch metal pipe found at 427.00 feet.

THENCE, with the north line of the said 53 1/2 acre tract extended, S 82°-13'-54"W, a distance of 245.42 feet to a point on the shore line of Indian Lake, passing a 5/8 inch iron rod set at 236.81 feet.

THENCE, with the shore line of Indian Lake, the following six courses:

N 1°-53'-39"E, a distance of 214.57 feet to a point, referenced by a 5/8 inch iron rod set bearing S 1°-31'-26"E, a distance of 15.64 feet.

S 66°-59'-21"E, a distance of 54.48 feet to a point, referenced by a 5/8 inch iron rod set bearing S 18°-06'-58"E, a distance of 15.17 feet.

N 64°-44'-55"E, a distance of 136.53 feet to a point, referenced by a 5/8 inch iron rod set bearing S 66°-52'-42"E, a distance of 22.47 feet.

N 5°-21'-16"E, a distance of 164.10 feet to a point, referenced by a 5/8 inch square iron bar found at Wonders Base Line Station 214+57.3 bearing S 73°-42'-28"E, a distance of 4.72 feet.

N 32°-02'-54"W, a distance of 170.86 feet to a point, referenced by a 5/8 inch iron rod set bearing N 54°-46'-13"E, a distance of 8.41 feet.

N 8°-29'-41"W, a distance of 58.62 feet to a point on the State Line at the TRUE POINT OF BEGINNING, referenced by a 5/8 inch iron rod set bearing N 81°-30'-19"E, a distance of 10.00 feet.

THENCE, with the shore line of Indian Lake, the following two courses:

N 8°-29'-41"W, a distance of 37.86 feet to a point, referenced by a 5/8 inch iron rod set bearing S 65°-26'-18"E, a distance of 6.89 feet.

N 19°-14'-55"E, a distance of 42.77 feet to a point on the State Line, referenced by a 5/8 inch iron rod set bearing S 70°-45'-05"E, a distance of 10.00 feet.



# Lee Surveying and Mapping Co., Inc.

Land Surveys • Topography • Subdivisions • Construction Layout

117 N. Madriver St.  
Bellefontaine OH 43311



Phone: (937) 593-7335  
Fax: (937) 593-7444

THENCE, with the State Line, S 6°-14'-20"W, a distance of 78.29 feet to the point of beginning.

Containing 0.009 acre.

The basis for bearings is the north line of the State of Ohio, Department of Natural Resources 53 1/2 acre tract (O.R. 414, Pg. 832, Tract I), being S 82°-13'-54"W, and all other bearings are from angles and distances measured in a field survey by Lee Surveying and Mapping Co., Inc. on February 15, 2008.



ORIGINAL STAMP IN GREEN

Description prepared by:

A handwritten signature in black ink that reads 'William K. Bruce'.

William K. Bruce  
Professional Surveyor 7437  
February 18, 2008

4584018



REC'D 3-3-00 S.M.J.

# Lee Surveying and Mapping Co., Inc.

Land Surveys • Topography • Subdivisions • Construction Layout

117 N. Madriver St.  
Bellefontaine OH 43311



Phone: (937) 593-7335  
Fax: (937) 593-7444

## INDIAN LAKE RESERVOIR LANDS 0.019 ACRE

Lying in Virginia Military Survey 9968, Richland Township, Logan County, Ohio.

Being out of the Indian Lake Reservoir Lands and being more particularly described as follows:

Commencing on a 1-1/2 inch square iron bar found at an angle point in County Highway 254 at Station 52+58.50 (Logan County Engineer's Field Book 500, Page 11).

THENCE, with the west boundary line of the O'Connor Farms, Inc., original 130 acre tract (Vol. 353, Pg. 663, Tract VI), S 9°-47'-40"E, a distance of 1526.60 feet to a 5/8 inch iron rod set, passing 5/8 inch iron rods set at 25.03 feet, 182.08 feet, 525.41 feet and 555.89 feet.

THENCE, with the north line of the State of Ohio, Department of Natural Resources 53 1/2 acre tract (O.R. 414, Pg. 832, Tract I), S 82°-13'-54"W, a distance of 439.56 feet to a 10" Elm tree found on the State Line, passing a 2 inch metal pipe found at 427.00 feet.

THENCE, with the north line of the said 53 1/2 acre tract extended, S 82°-13'-54"W, a distance of 245.42 feet to a point on the shore line of Indian Lake, passing a 5/8 inch iron rod set at 236.81 feet.

THENCE, with the shore line of Indian Lake, the following eight courses:

N 1°-53'-39"E, a distance of 214.57 feet to a point, referenced by a 5/8 inch iron rod set bearing S 1°-31'-26"E, a distance of 15.64 feet.

S 66°-59'-21"E, a distance of 54.48 feet to a point, referenced by a 5/8 inch iron rod set bearing S 18°-06'-58"E, a distance of 15.17 feet.

N 64°-44'-55"E, a distance of 136.53 feet to a point, referenced by a 5/8 inch iron rod set bearing S 66°-52'-42"E, a distance of 22.47 feet.

N 5°-21'-16"E, a distance of 164.10 feet to a point, referenced by a 5/8 inch square iron bar found at Wonders Base Line Station 214+57.3 bearing S 73°-42'-28"E, a distance of 4.72 feet.

N 32°-02'-54"W, a distance of 170.86 feet to a point, referenced by a 5/8 inch iron rod set bearing N 54°-46'-13"E, a distance of 8.41 feet.

N 8°-29'-41"W, a distance of 96.48 feet to a point, referenced by a 5/8 inch iron rod set bearing S 65°-26'-18"E, a distance of 6.89 feet.

N 19°-14'-55"E, a distance of 199.10 feet to a point, referenced by a 5/8 inch iron rod set bearing S 68°-30'-30"E, a distance of 12.16 feet.

N 20°-33'-49"W, a distance of 12.58 feet to a point on the State Line at the TRUE POINT OF BEGINNING, referenced by a 5/8 inch iron rod set bearing N 69°-18'-29"E, a distance of 19.83 feet.

THENCE, with the shore line of Indian Lake, N 20°-33'-49"W, a distance of 141.51 feet to a point on the State Line, referenced by a 5/8 inch iron rod set bearing N 69°-26'-11"E, a distance of 10.00 feet.

THENCE, with the State Line, the following two courses:

S 25°-54'-34"E, a distance of 127.63 feet to a 5/8 inch iron rod set at Wonders Base Line Station 219+53.

INDEXED ON MAP  
7011 4D-8

# Lee Surveying and Mapping Co., Inc.

Land Surveys • Topography • Subdivisions • Construction Layout

117 N. Madriver St.  
Bellefontaine OH 43311



Phone: (937) 593-7335  
Fax: (937) 593-7444

S 18°-54'-15"W, a distance of 18.71 feet to the point of beginning.

Containing 0.019 acre.

The basis for bearings is the north line of the State of Ohio, Department of Natural Resources 53 1/2 acre tract (O.R. 414, Pg. 832, Tract I), being S 82°-13'-54"W, and all other bearings are from angles and distances measured in a field survey by Lee Surveying and Mapping Co., Inc. on February 15, 2008.



ORIGINAL STAMP IN GREEN

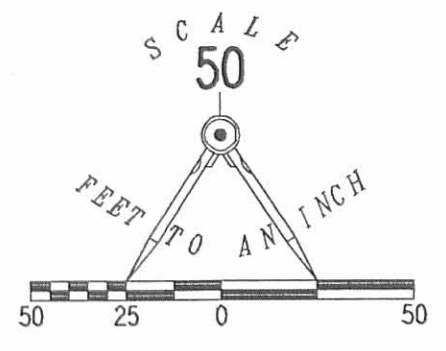
Description prepared by:

*William K. Bruce*

William K. Bruce  
Professional Surveyor 7437  
February 18, 2008

4584018



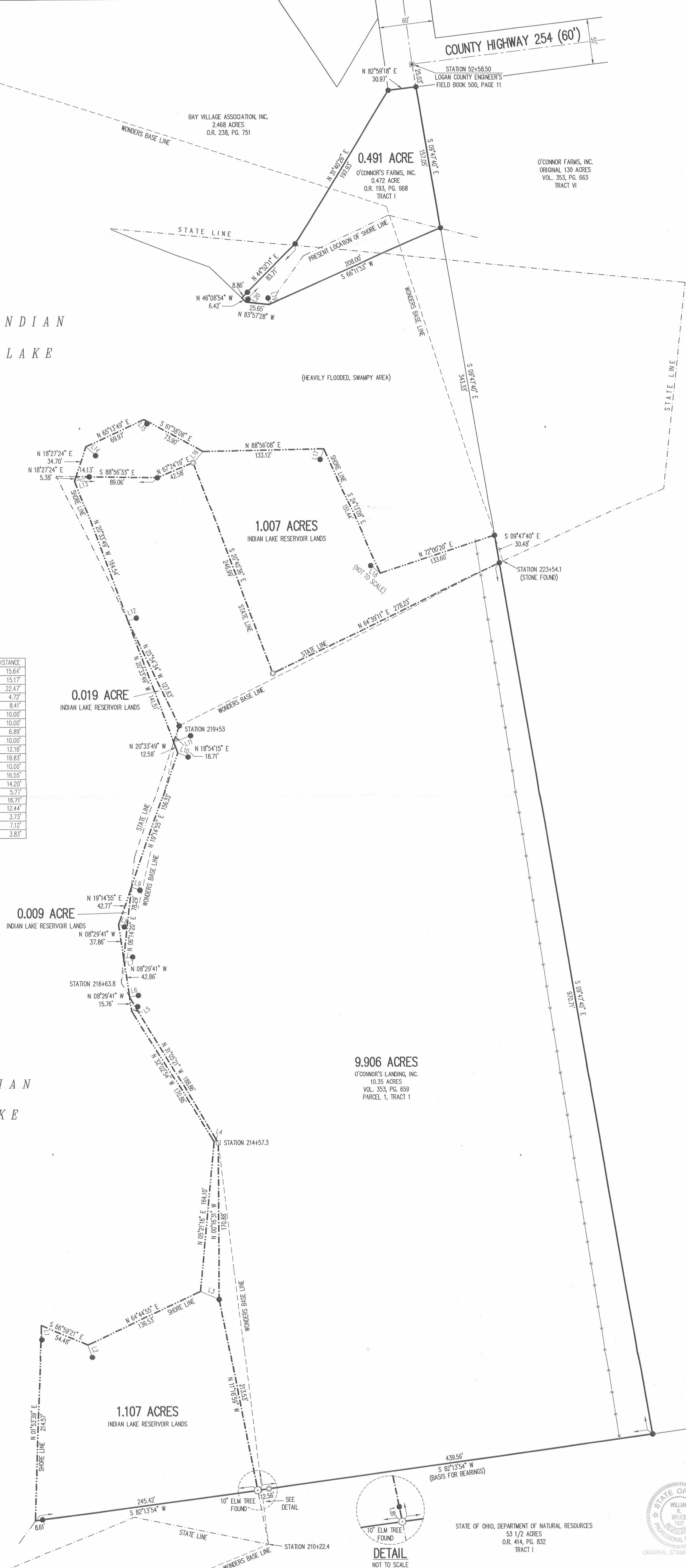


- LEGEND:
- 5/8 INCH IRON ROD SET
  - 2 INCH METAL PIPE FOUND
  - 5/8 INCH SQUARE IRON BAR FOUND
  - 1-1/2 INCH SQUARE IRON BAR FOUND
  - - - - DENOTES SHORE LINE
  - - - - DENOTES WONDERS BASE LINE
  - DENOTES STATE LINE

INDIAN  
LAKE

(HEAVILY FLOODED, SWAMPY AREA)

LINE	BEARING	DISTANCE
L1	S 01°31'26" E	15.64'
L2	S 18°06'58" E	15.17'
L3	S 66°52'42" E	22.47'
L4	S 73°42'28" E	4.72'
L5	N 54°46'13" E	8.41'
L6	N 81°30'19" E	10.00'
L7	N 81°30'19" E	10.00'
L8	S 65°26'18" E	6.89'
L9	S 70°45'05" E	10.00'
L10	S 68°30'30" E	12.16'
L11	N 69°18'29" E	19.83'
L12	N 69°26'11" E	10.00'
L13	N 72°59'17" E	16.55'
L14	S 45°47'46" E	14.20'
L15	S 35°24'43" E	5.77'
L16	S 42°04'47" W	16.71'
L17	S 18°30'44" W	12.44'
L18	N 50°26'16" W	3.73'
L19	N 09°31'32" E	7.12'
L20	N 35°51'29" E	3.83'



O'CONNOR FARMS, INC.  
ORIGINAL 130 ACRES  
VOL. 353, PG. 663  
TRACT VI

RETRACEMENT SURVEY OF THE  
O'CONNOR'S LANDING, INC.  
10.35 ACRE TRACT  
VOLUME 353, PAGE 659  
PARCEL 1, TRACT I  
AND  
O'CONNOR'S FARMS, INC.  
0.472 ACRE TRACT  
OFFICIAL RECORD 193, PAGE 968  
TRACT I  
VIRGINIA MILITARY SURVEY 9968  
RICHLAND TOWNSHIP  
LOGAN COUNTY, OHIO

SURVEYED BY:  
*William K. Bruce*  
WILLIAM K. BRUCE  
PROFESSIONAL SURVEYOR 7437  
FEBRUARY 15, 2008



STATE OF OHIO, DEPARTMENT OF NATURAL RESOURCES  
5 1/2 ACRES  
O.R. 414, PG. 832  
TRACT I



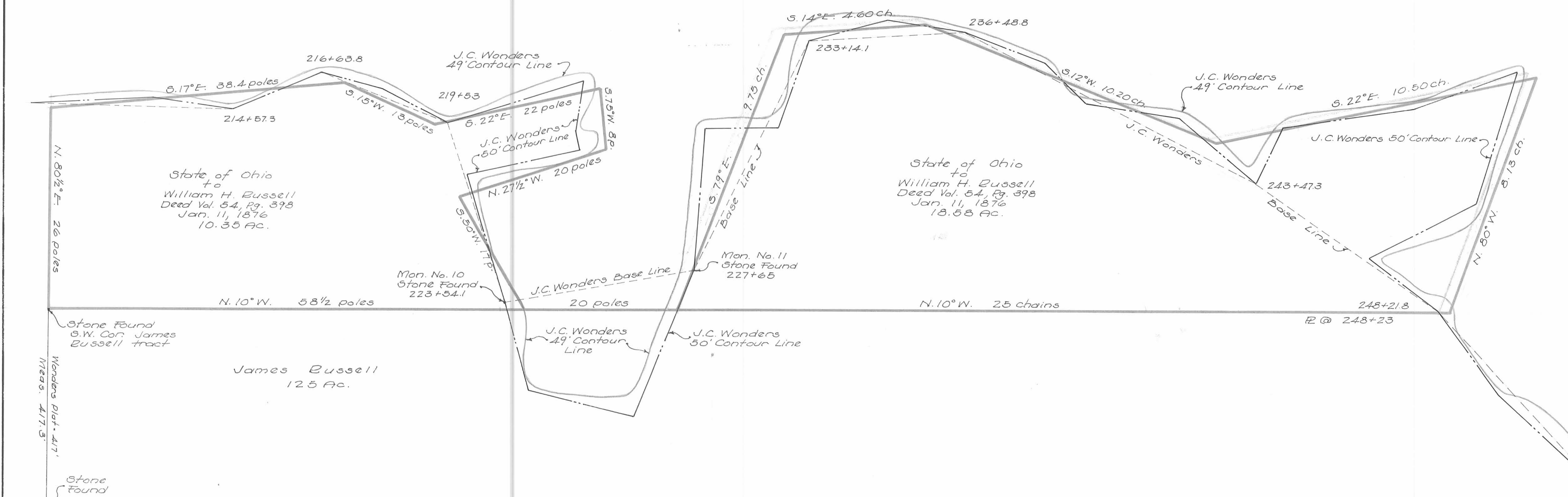
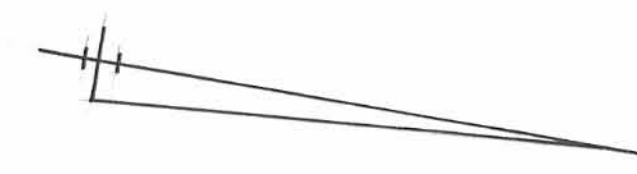
2 WORKING DAYS  
**BEFORE YOU DIG**  
CALL TOLL FREE 800-362-2764  
OHIO UTILITIES PROTECTION SERVICE.

COPYRIGHT 2008 BY:  
LEE SURVEYING & MAPPING CO., INC.  
117 North Medriver Street  
BELLEFONTAIN, OHIO 43311  
(937) 593-7335  
surveys@lsmcinc.us  
KSS D0208 4584018 L-4584-1

INDEXED ON MAP  
7011 4P



INDIAN LAKE



PLAT OF M. H. McCORMICK SURVEY  
OF  
STATE LANDS IN AND AROUND  
LEWISTOWN RESERVOIR  
DATED APRIL 6, 1876

AND  
J. C. WONDERS SURVEY  
OF  
LEWISTOWN RESERVOIR LANDS  
DATED 1892

V.M.S. 9968  
RICHLAND TOWNSHIP  
LOGAN COUNTY, OHIO  
1975  
SCALE 1" = 100'

Drawn by  
Dan L. Dodson  
Reg. Surveyor 4270  
Bellevue, Ohio

REC'D 9-10-10 SMM/OK

# Lee Surveying and Mapping Co., Inc.

Land Surveys • Topography • Subdivisions • Construction Layout

117 N. Madriver St.  
Bellefontaine OH 43311



Phone: (937) 593-7335  
Fax: (937) 593-7444

## O'CONNOR'S LANDING, INC. 7.742 ACRES

Lying in Virginia Military Survey 9968, Richland Township, Logan County, Ohio.

Being out of the O'Connor's Landing, Inc., 10.35 acre tract as deeded and described in Volume 353, Page 659, Parcel 1, Tract 1 of the Logan County Records of Deeds and being more particularly described as follows:

Commencing on a 1-1/2 inch square iron bar found at an angle point in County Highway 254 at Station 52+58.50 (Logan County Engineer's Field Book 500, Page 11).

THENCE, with the west boundary line of the O'Connor Farms, Inc., original 130 acre tract (Vol. 353, Pg. 663, Tract VI), S 9°-47'-40"E, a distance of 555.89 feet to a 5/8 inch iron rod set on the State Line at the TRUE POINT OF BEGINNING, passing 5/8 inch iron rods set at 25.03 feet, 182.08 feet and 525.41 feet.

THENCE, with the west line of the said original 130 acre tract, S 9°-47'-40"E, a distance of 757.44 feet to a 5/8 inch iron rod set.

THENCE, S 82°-13'-54"W, a distance of 445.11 feet to a 5/8 inch iron rod set on the State Line.

THENCE, with the State Line, the following two courses:

N 0°-16'-31"W, a distance of 170.88 feet to a 5/8 inch square iron bar found at Wonders Base Line Station 214+57.3.

N 31°-05'-21"W, a distance of 188.86 feet to a point on the shore line of Indian Lake, referenced by a 5/8 inch iron rod set bearing N 81°-30'-19"E, a distance of 10.00 feet.

THENCE, with the shore line of Indian Lake, N 8°-29'-41"W, a distance of 42.86 feet to a point on the State Line, referenced by a 5/8 inch iron rod set bearing N 81°-30'-19"E, a distance of 10.00 feet.

THENCE, with the State Line, N 6°-14'-20"E, a distance of 78.29 feet to a point on the shore line of Indian Lake, referenced by a 5/8 inch iron rod set bearing S 70°-45'-05"E, a distance of 10.00 feet.

THENCE, with the shore line of Indian Lake, the following two courses:

N 19°-14'-55"E, a distance of 156.33 feet to a point, referenced by a 5/8 inch iron rod set bearing S 68°-30'-30"E, a distance of 12.16 feet.

N 20°-33'-49"W, a distance of 12.58 feet to a point on the State Line, referenced by a 5/8 inch iron rod set bearing N 69°-18'-29"E, a distance of 19.83 feet.

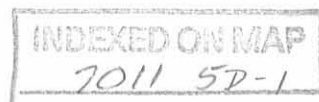
THENCE, with the State Line, the following two courses:

N 18°-54'-15"E, a distance of 18.71 feet to a 5/8 inch iron rod set at Wonders Base Line Station 219+53.

N 25°-54'-34"W, a distance of 127.63 feet to a point on the shore line of Indian Lake, referenced by a 5/8 inch iron rod set bearing N 69°-26'-11"E, a distance of 10.00 feet.

THENCE, with the shore line of Indian Lake, the following two courses:

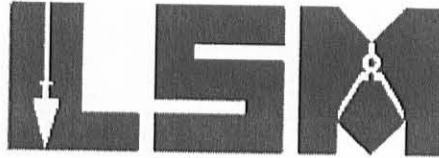
N 20°-33'-49"W, a distance of 164.54 feet to a point, referenced by a 5/8 inch iron rod set bearing N 72°-59'-17"E, a distance of 16.55 feet.



# Lee Surveying and Mapping Co., Inc.

Land Surveys • Topography • Subdivisions • Construction Layout

117 N. Madriver St.  
Bellefontaine OH 43311



Phone: (937) 593-7335  
Fax: (937) 593-7444

N 18°-27'-24"E, a distance of 5.38 feet to a point on the State Line.

THENCE, with the State Line, the following four courses:

S 88°-56'-33"E, a distance of 89.06 feet to a 5/8 inch iron rod set, passing a 5/8 inch iron rod set at 14.13 feet.

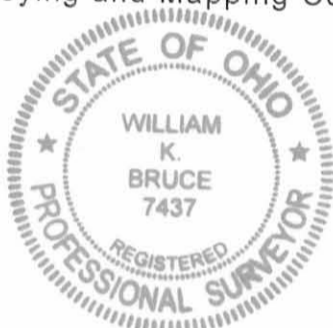
N 67°-24'-19"E, a distance of 42.58 feet to a 2 inch metal pipe found.

S 20°-40'-36"E, a distance of 246.99 feet to a 2 inch metal pipe found.

N 64°-39'-11"E, a distance of 278.23 feet to the point of beginning.

Containing 7.742 acres.

The basis for bearings is the north line of the State of Ohio, Department of Natural Resources 53 1/2 acre tract (O.R. 414, Pg. 832, Tract I), being S 82°-13'-54"W, and all other bearings are from angles and distances measured in a field survey by Lee Surveying and Mapping Co., Inc. on February 15, 2008, revised September 7, 2010.



ORIGINAL STAMP IN GREEN

Description prepared by:

A handwritten signature in cursive script that reads 'William K. Bruce'.

William K. Bruce  
Professional Surveyor 7437  
September 7, 2010

4584810



2010 9-10-10 SUM BK

# Lee Surveying and Mapping Co., Inc.

Land Surveys • Topography • Subdivisions • Construction Layout

117 N. Madriver St.  
Bellefontaine OH 43311



Phone: (937) 593-7335  
Fax: (937) 593-7444

## O'CONNOR'S LANDING, INC. 2.164 ACRES

Lying in Virginia Military Survey 9968, Richland Township, Logan County, Ohio.

Being out of the O'Connor's Landing, Inc., 10.35 acre tract as deeded and described in Volume 353, Page 659, Parcel 1, Tract 1 of the Logan County Records of Deeds and being more particularly described as follows:

Commencing on a 1-1/2 inch square iron bar found at an angle point in County Highway 254 at Station 52+58.50 (Logan County Engineer's Field Book 500, Page 11).

THENCE, with the west boundary line of the O'Connor Farms, Inc., original 130 acre tract (Vol. 353, Pg. 663, Tract VI), S 9°-47'-40"E, a distance of 1313.33 feet to a 5/8 inch iron rod set at the TRUE POINT OF BEGINNING, passing 5/8 inch iron rods set at 25.03 feet, 182.08 feet, 525.41 feet and 555.89 feet.

THENCE, with the west line of the said original 130 acre tract, S 9°-47'-40"E, a distance of 213.27 feet to a 5/8 inch iron rod set.

THENCE, with the north line of the State of Ohio, Department of Natural Resources 53 1/2 acre tract (O.R. 414, Pg. 832, Tract I), S 82°-13'-54"W, a distance of 439.56 feet to a 10" Elm tree found on the State Line, passing a 2 inch metal pipe found at 427.00 feet.

THENCE, with the State Line, N 11°-16'-59"W, a distance of 213.53 feet to a 5/8 inch iron rod set, passing a 5/8 inch iron rod set at 1.81 feet.

THENCE, N 82°-13'-54"E, a distance of 445.11 feet to the point of beginning

Containing 2.164 acres.

The basis for bearings is the north line of the State of Ohio, Department of Natural Resources 53 1/2 acre tract (O.R. 414, Pg. 832, Tract I), being S 82°-13'-54"W, and all other bearings are from angles and distances measured in a field survey by Lee Surveying and Mapping Co., Inc. on February 15, 2008, revised September 7, 2010.

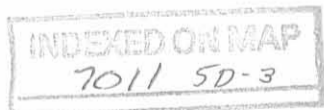


ORIGINAL STAMP IN GREEN

Description prepared by:

William K. Bruce  
Professional Surveyor 7437  
September 7, 2010

4584810

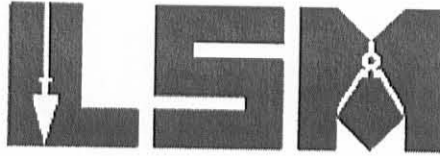


REC'D 9-10-10 SWY OK

# Lee Surveying and Mapping Co., Inc.

Land Surveys • Topography • Subdivisions • Construction Layout

117 N. Madriver St.  
Bellefontaine OH 43311



Phone: (937) 593-7335  
Fax: (937) 593-7444

## INDIAN LAKE RESERVOIR LANDS 1.039 ACRES

Lying in Virginia Military Survey 9968, Richland Township, Logan County, Ohio.

Being out of the Indian Lake Reservoir Lands and being more particularly described as follows:

Commencing on a 1-1/2 inch square iron bar found at an angle point in County Highway 254 at Station 52+58.50 (Logan County Engineer's Field Book 500, Page 11).

THENCE, with the west boundary line of the O'Connor Farms, Inc., original 130 acre tract (Vol. 353, Pg. 663, Tract VI), S 9°-47'-40"E, a distance of 1526.60 feet to a 5/8 inch iron rod set, passing 5/8 inch iron rods set at 25.03 feet, 182.08 feet, 525.41 feet, 555.89 feet and 1313.33 feet.

THENCE, with the north line of the State of Ohio, Department of Natural Resources 53 1/2 acre tract (O.R. 414, Pg. 832, Tract I), S 82°-13'-54"W, a distance of 439.56 feet to a 10" Elm tree found on the State Line at the TRUE POINT OF BEGINNING, passing a 2 inch metal pipe found at 427.00 feet.

THENCE, with the north line of the said 53 1/2 acre tract extended, S 82°-13'-54"W, a distance of 245.42 feet to a point on the shore line of Indian Lake, passing a 5/8 inch iron rod set at 236.81 feet.

THENCE, with the shore line of Indian Lake, the following three courses:

N 1°-53'-39"E, a distance of 214.57 feet to a point, referenced by a 5/8 inch iron rod set bearing S 1°-31'-26"E, a distance of 15.64 feet.

S 66°-59'-21"E, a distance of 54.48 feet to a point, referenced by a 5/8 inch iron rod set bearing S 18°-06'-58"E, a distance of 15.17 feet.

N 64°-44'-55"E, a distance of 136.53 feet to a point.

THENCE, S 66°-52'-42"E, a distance of 22.47 feet to a 5/8 inch iron rod set on the State Line.

THENCE, with the State Line and a west line of the O'Connor's Landing, Inc., 10.35 acre tract (Vol. 353, Pg. 659, Parcel 1, Tract 1), S 11°-16'-59"E, a distance of 213.53 feet to the point of beginning, passing a 5/8 inch iron rod set at 211.72 feet.

Containing 1.039 acres.

The basis for bearings is the north line of the State of Ohio, Department of Natural Resources 53 1/2 acre tract (O.R. 414, Pg. 832, Tract I), being S 82°-13'-54"W, and all other bearings are from angles and distances measured in a field survey by Lee Surveying and Mapping Co., Inc. on February 15, 2008, revised September 7, 2010.

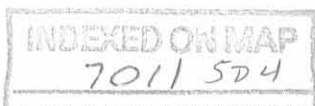


ORIGINAL STAMP IN GREEN

Description prepared by:

William K. Bruce  
Professional Surveyor 7437  
September 7, 2010

4584810

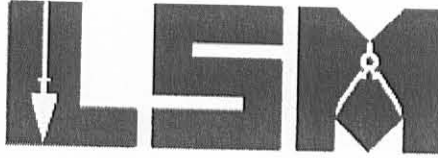


REC'D 9-10-10 smy auc

# Lee Surveying and Mapping Co., Inc.

Land Surveys • Topography • Subdivisions • Construction Layout

117 N. Madriver St.  
Bellefontaine OH 43311



Phone: (937) 593-7335  
Fax: (937) 593-7444

## INDIAN LAKE RESERVOIR LANDS 0.068 ACRE

Lying in Virginia Military Survey 9968, Richland Township, Logan County, Ohio.

Being out of the Indian Lake Reservoir Lands and being more particularly described as follows:

Commencing on a 1-1/2 inch square iron bar found at an angle point in County Highway 254 at Station 52+58.50 (Logan County Engineer's Field Book 500, Page 11).

THENCE, with the west boundary line of the O'Connor Farms, Inc., original 130 acre tract (Vol. 353, Pg. 663, Tract VI), S 9°-47'-40"E, a distance of 1526.60 feet to a 5/8 inch iron rod set, passing 5/8 inch iron rods set at 25.03 feet, 182.08 feet, 525.41 feet, 555.89 feet and 1313.33 feet.

THENCE, with the north line of the State of Ohio, Department of Natural Resources 53 1/2 acre tract (O.R. 414, Pg. 832, Tract I), S 82°-13'-54"W, a distance of 439.56 feet to a 10" Elm tree found on the State Line, passing a 2 inch metal pipe found at 427.00 feet.

THENCE, with the with the State Line and the west line of the O'Connor's Landing, Inc., 10.35 acre tract (Vol. 353, Pg. 659, Parcel 1, Tract 1), N 11°-16'-59"W, a distance of 213.53 feet to a 5/8 inch iron rod set at the TRUE POINT OF BEGINNING.

THENCE, N 66°-52'-42"W, a distance of 22.47 feet to a point on the shore line of Indian Lake.

THENCE, with the shore line of Indian Lake, the following three courses:

N 5°-21'-16"E, a distance of 164.10 feet to a point, referenced by a 5/8 inch square iron bar found at Wonders Base Line Station 214+57.3 bearing S 73°-42'-28"E, a distance of 4.72 feet.

N 32°-02'-54"W, a distance of 170.86 feet to a point, referenced by a 5/8 inch iron rod set bearing N 54°-46'-13"E, a distance of 8.41 feet.

N 8°-29'-41"W, a distance of 15.76 feet to a point on the State Line, referenced by a 5/8 inch iron rod set bearing N 81°-30'-19"E, a distance of 10.00 feet.

THENCE, with the State Line and the west lines of the aforesaid 10.35 acre tract, the following two courses:

S 31°-05'-21"E, a distance of 188.86 feet to a 5/8 inch square iron bar found at Wonders Base Line Station 214+57.3.

S 0°-16'-31"E, a distance of 170.88 feet to the point of beginning.

Containing 0.068 acre.

The basis for bearings is the north line of the State of Ohio, Department of Natural Resources 53 1/2 acre tract (O.R. 414, Pg. 832, Tract I), being S 82°-13'-54"W, and all other bearings are from angles and distances measured in a field survey by Lee Surveying and Mapping Co., Inc. on February 15, 2008, revised September 7, 2010.

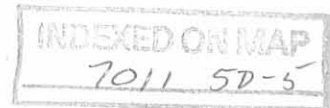


ORIGINAL STAMP IN GREEN

Description prepared by:

*William K. Bruce*

William K. Bruce  
Professional Surveyor 7437  
September 7, 2010



4584810

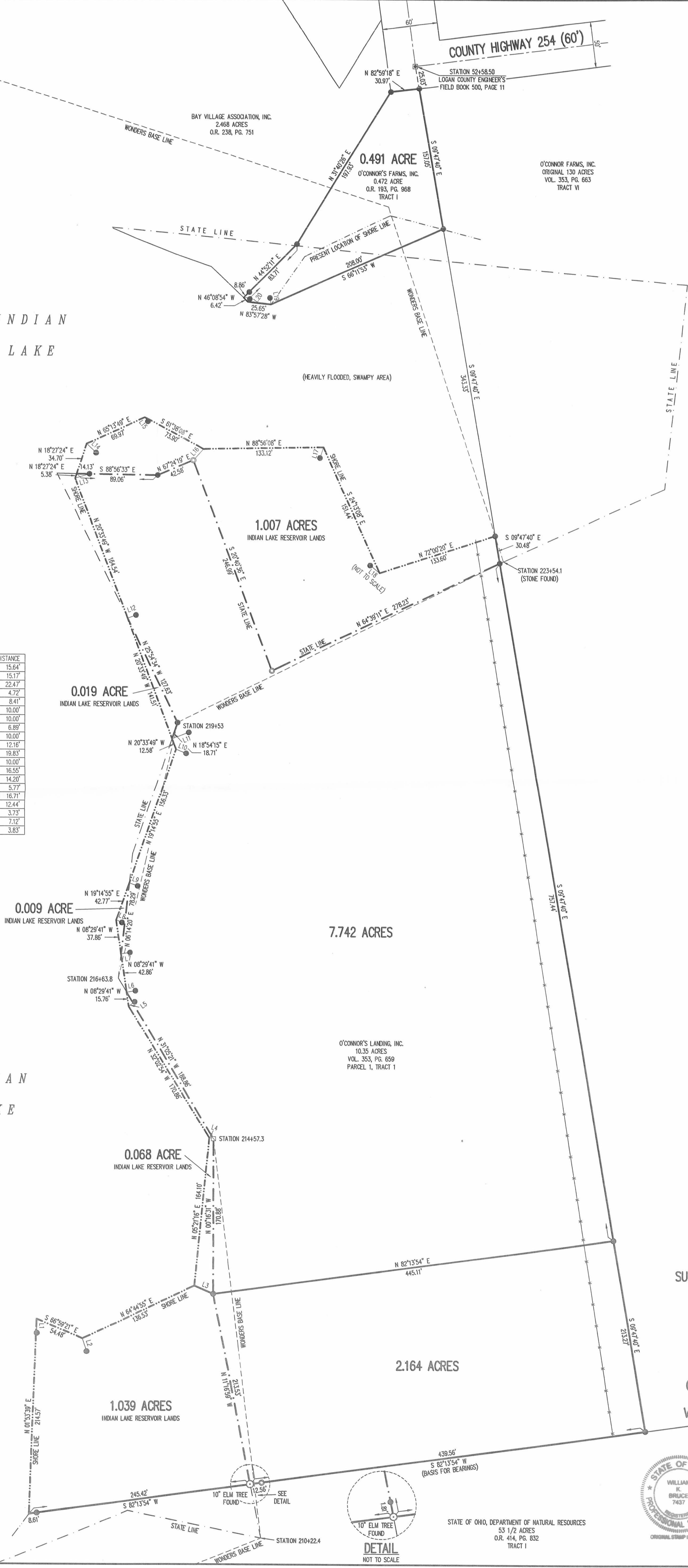
SCALE  
50  
FEET TO AN INCH

LEGEND:  
 ● 5/8 INCH IRON ROD SET  
 ○ 2 INCH METAL PIPE FOUND  
 □ 5/8 INCH SQUARE IRON BAR FOUND  
 ⊠ 1-1/2 INCH SQUARE IRON BAR FOUND  
 - - - - - DENOTES SHORE LINE  
 - - - - - DENOTES WONDERS BASE LINE  
 - - - - - DENOTES STATE LINE

INDIAN  
LAKE

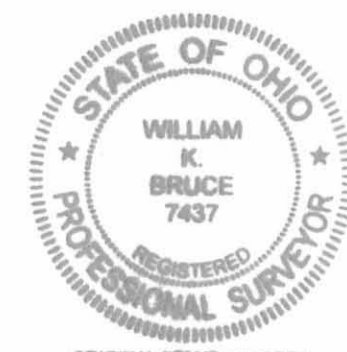
(HEAVILY FLOODED, SWAMPY AREA)

LINE	BEARING	DISTANCE
L1	S 01°31'26" E	15.64'
L2	S 18°06'58" E	15.17'
L3	S 66°52'42" E	22.47'
L4	S 73°42'28" E	4.72'
L5	N 54°46'13" E	8.41'
L6	N 81°30'19" E	10.00'
L7	N 81°30'19" E	10.00'
L8	S 65°26'18" E	6.89'
L9	S 70°45'05" E	10.00'
L10	S 68°30'30" E	12.16'
L11	N 69°18'29" E	19.83'
L12	N 69°26'11" E	10.00'
L13	N 72°58'17" E	16.55'
L14	S 45°47'46" E	14.20'
L15	S 35°24'43" E	5.77'
L16	S 42°04'47" W	16.71'
L17	S 18°30'44" W	12.44'
L18	N 50°26'16" W	3.73'
L19	N 09°31'32" W	7.12'
L20	N 35°51'29" E	3.83'



INDIAN  
LAKE

RETRACEMENT SURVEY OF AND  
SURVEY OF TWO TRACTS OUT OF THE  
O'CONNOR'S LANDING, INC.  
10.35 ACRE TRACT  
VOLUME 353, PAGE 659  
PARCEL 1, TRACT I  
AND  
O'CONNOR'S FARMS, INC.  
0.472 ACRE TRACT  
OFFICIAL RECORD 193, PAGE 968  
TRACT I  
VIRGINIA MILITARY SURVEY 9968  
RICHLAND TOWNSHIP  
LOGAN COUNTY, OHIO



SURVEYED BY:  
*William K. Bruce*  
WILLIAM K. BRUCE  
PROFESSIONAL SURVEYOR 7437  
FEBRUARY 15, 2008  
REVISED SEPTEMBER 7, 2010

COPYRIGHT 2010 BY:  
LEE SURVEYING & MAPPING CO., INC.  
117 North Madriver Street  
BELLEVUE, OHIO 43311  
(937) 561-7335  
surveys@lsminc.us  
KSS D0810 4584810 L-4584-1

2 WORKING DAYS  
BEFORE YOU DIG  
CALL TOLL FREE 800-362-2764  
OHIO UTILITIES PROTECTION SERVICE



STATE OF OHIO, DEPARTMENT OF NATURAL RESOURCES  
53 1/2 ACRES  
O.R. 414, PG. 832  
TRACT I

# Lee Surveying and Mapping Co., Inc.

Land Surveys • Topography • Subdivisions • Construction Layout

117 N. Madriver St.  
Bellefontaine OH 43311



Phone: (937) 593-7335  
Fax: (937) 593-7444  
surveys@lsminc.us

## INDIAN LAKE RESERVOIR LANDS CONSERVATION EASEMENT 0.877 ACRE

Lying in Virginia Military Survey 9968, Richland Township, Logan County, Ohio.

Being a conservation easement over a portion of the Indian Lake Reservoir Lands and being more particularly described as follows:

Commencing on a 1-1/2 inch square iron bar found at an angle point in County Highway 254 at Station 52+58.50 (Logan County Engineer's Field Book 500, Page 11).

THENCE, with the west boundary line of the O'Connor Farms, Inc., original 130 acre tract (Vol. 353, Pg. 663, Tract VI), S 9°-47'-40"E, a distance of 525.41 feet to a 5/8 inch iron rod set at the TRUE POINT OF BEGINNING, passing 5/8 inch iron rods set at 25.03 feet and 182.08 feet.

THENCE, with the west line of the said original 130 acre tract, S 9°-47'-40"E, a distance of 30.48 feet to a 5/8 inch iron rod set on the State Line.

THENCE, with the State Line, the following two courses:

S 64°-39'-11"W, a distance of 278.23 feet to a 2 inch metal pipe found.

N 20°-40'-36"W, a distance of 246.99 feet to a 2 inch metal pipe found.

THENCE, N 42°-04'-47"E, a distance of 16.71 feet to a point on the shore line of Indian Lake.

THENCE, with the shore line of Indian Lake, the following three courses:

N 88°-56'-08"E, a distance of 133.12 feet to a point, referenced by a 5/8 inch iron rod set bearing S 18°-30'-44"W, a distance of 12.44 feet.

S 24°-13'-08"E, a distance of 151.44 feet to a point, referenced by a 5/8 inch iron rod set bearing N 50°-26'-16"W, a distance of 3.73 feet.

N 72°-00'-20"E, a distance of 133.60 feet to the point of beginning.

Containing 0.877 acre.

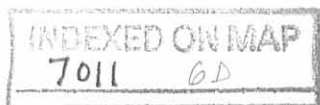
The basis for bearings is the north line of the State of Ohio, Department of Natural Resources 53 1/2 acre tract (O.R. 414, Pg. 832, Tract I), being S 82°-13'-54"W, and all other bearings are from angles and distances measured in a field survey by Lee Surveying and Mapping Co., Inc. on February 15, 2008.



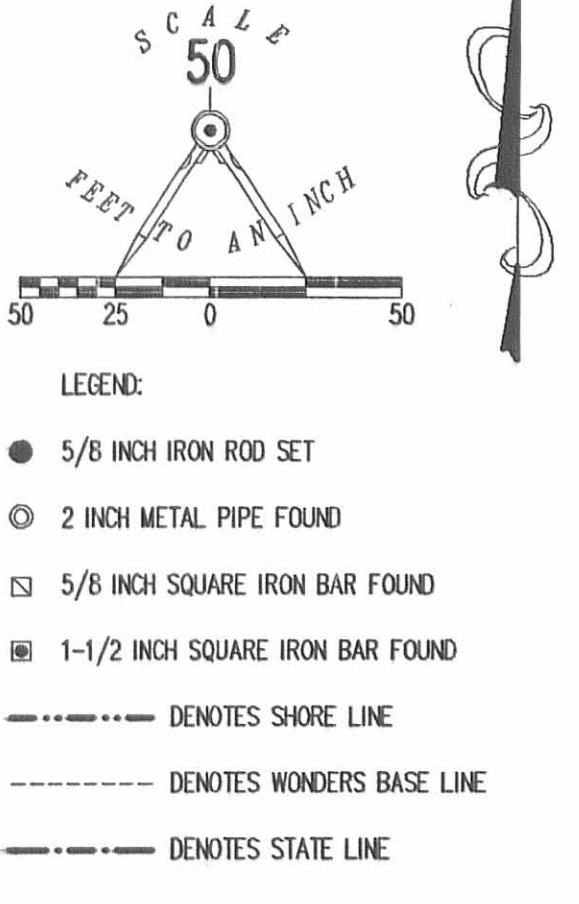
Description prepared by:

William K. Bruce  
Professional Surveyor 7437  
July 15, 2011

45840711







LINE	BEARING	DISTANCE
L1	S 01°31'26" E	15.64'
L2	S 18°06'58" E	15.17'
L3	S 66°52'42" E	22.47'
L4	S 73°42'28" E	4.72'
L5	N 54°46'13" E	8.41'
L6	N 81°30'19" E	10.00'
L7	N 81°30'19" E	10.00'
L8	S 65°26'18" E	6.89'
L9	S 70°45'05" E	10.00'
L10	S 68°30'30" E	12.16'
L11	N 69°18'29" E	19.83'
L12	N 69°26'11" E	10.00'
L13	N 72°59'17" E	16.55'
L14	S 45°47'46" E	14.20'
L15	S 35°24'43" E	5.77'
L16	S 42°04'47" W	16.71'
L17	S 18°30'44" W	12.44'
L18	N 50°26'16" W	3.73'
L19	N 09°31'32" W	7.12'
L20	N 35°51'29" E	3.83'

