

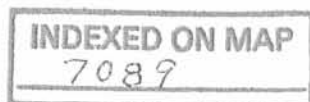
WILLIAMS SURVEY
V.M.S. 10503
RICHLAND TOWNSHIP
June 29, 1971

The following described real estate situated in Richland Township, Logan County, Ohio and being part of Virginia Military Survey 10503 and more particularly described as follows:

Beginning at an iron pin in the center of State Route No.117 at the southeast corner of Donald J. Ferguson's 2.97 acre tract, said pin being S.16° 54'E. 838.5 feet from an iron pin at the southeast corner of North Fork Subdivision as shown in Logan County Recorders Plat Book E, Volume 5, Page 10; thence with the centerline of said S. R. No.117, S.16° 54'E. 100.0 feet to an iron pin; thence S.73°06'W 200.0 feet to an iron bar, passing an iron bar at 30.0 feet; thence N.16° 54'W. 100.0 feet to an iron bar in the south line of said 2.97 acre tract; thence with said south line N.73° 06'E. 200.0 feet to the place of beginning.

Containing 0.46 of an acre more or less.

The above described tract being part of C. F. Williams 11.10 acre tract.



1D

DONALD J. FERGUSON

2.97 Ac

N. $73^{\circ}06'E$.

200.0'

R.R. spk
FOUND

N. $16^{\circ}54'W$.

100.0'

0.46 Ac.

100.0
S. $16^{\circ}54'E$.

200.0

S. $73^{\circ}06'W$.

30'

R.R. spk
SET

S.R. No. 117



WILLIAMS SURVEY

V.M.S. 10503

RICHLAND TOWNSHIP

LOGAN COUNTY, OHIO

JUNE 29, 1971

SCALE 1" = 50'

o = $\frac{5}{8}$ " ϕ BAR SET

INDEXED ON MAP
7089

1P

DAW L. DOOSON

REG. SURVEYOR 4270

BELLEFONTAINE O.

Lee Surveying and Mapping Co.



Farm Surveys • Lot Surveys • Descriptions • Subdivisions

855 EAST SANDUSKY AVENUE
BELLEFONTAINE, OHIO 43311

CLAYTON M. LEE, P. S.
(513) 593-5780

C. F. WILLIAMS SURVEY

TRACT No. 1

Being a part of v.M.S. 10503, Richland Township, Logan County Ohio and being a part of that 11.10 acres deeded and described in Volume 328, Page 386 of the Logan County Records of Deeds, and better describes as follows:

Beginning at a railroad spike in the center-line of State Route No. 117 at the northeast corner of that 1.30 acres described in Volume 342, Page 188 and designated as being Station 178+53 in the Logan County Engineers Field Book No. 387, Page 23.

THENCE, along the north line of said 1.30 acres, S 73° -08' W, a distance of 284.4 feet to the center-line of the North Fork of the Miami River, passing iron rods at 30.0 feet and 262.7 feet.

THENCE, with the center-line of North Fork, N 37° -22' W, a distance of 372.9 feet.

THENCE, N 72° -36' E, a distance of 415.0 feet to a railroad spike in the center-line of S.R. No. 117, passing iron rods at 26.6 feet and 254.4 feet.

THENCE, with the center-line of S.R. No. 117, S 16° -52' E, a distance of 353.1 feet to the point of beginning. Containing 2.822 acres.

Previous deed reference: Volume 328, Page 385.

Surveyed by

Clayton M. Lee

Clayton M. Lee
Reg. Surveyor 6181
1-11-77



7089 2D-1

INDEXED ON MAP

Lee Surveying and Mapping Co.



Farm Surveys • Lot Surveys • Descriptions • Subdivisions

855 EAST SANDUSKY AVENUE
BELLEFONTAINE, OHIO 43311

CLAYTON M. LEE, P. S.
(513) 593-5780

C. F. WILLIAMS TRACT No. 2

Being a part of V.M.S. 10503, Richland Township, Logan County, Ohio and better described as follows:

Beginning at a railroad spike in the center-line of State Route No. 117 at the southeast corner of the Donald Williams 0.46 acre lot as described in volume 337, Page 499 of the Logan County Deeds Records.

THENCE, with the south line of said 0.46 acre lot, S 73°-06' W, a distance of 200.0 feet to an iron rod at the southwest corner of said 0.46 acre, passing an iron rod at 30 feet.

THENCE, with the west line of the 0.46 acre, N 16°-54' W, a distance of 100.0 feet to an iron pipe in the northwest corner of the 0.46 acre. This point lying in the south line of a 2.97 acre tract as described in volume 328, Page 386. (Exception No. 2).

THENCE, with the south line of said 2.97 acres, S 73°-06' W, a distance of 135.0 feet to the center-line of the Old Channel of North Fork, passing an iron rod at 115.0 feet.

THENCE, continuing with the south line of the 2.97 acres and the center-line of the old channel, N 63°-42' W, a distance of 67.2 feet.

THENCE, continuing with the south line of the 2.97 acre tract and the center-line of the old channel, S 79°-33' W, a distance of 124.8 feet.

THENCE, still continuing with the south line of the 2.97 acres and the center-line of the old channel, S 50°-25' W, a distance of 106.4 feet to the center-line of the present channel of the North Fork of the Miami River.

THENCE, with the center-line of the North Fork, S 41°-13' E, a distance of 246.7 feet. This point also being the northwest corner of a 2.14 acre tract as described in volume 349, Page 977.

THENCE, with the north line of said 2.14 acres, N 71°-11' E, a distance of 505.0 feet to a railroad spike in the center-line of S.R. 117 and designated as being Station 184+14.1 in the Logan County Engineer's Field Book No. 387, Page 23.

THENCE, with the center-line of S.R. 117, N 16°-54' W, a distance of 89.0 feet to the point of beginning. Containing 2.312 acres.

Previous Reference: Volume 328, Page 385.

Surveyed by

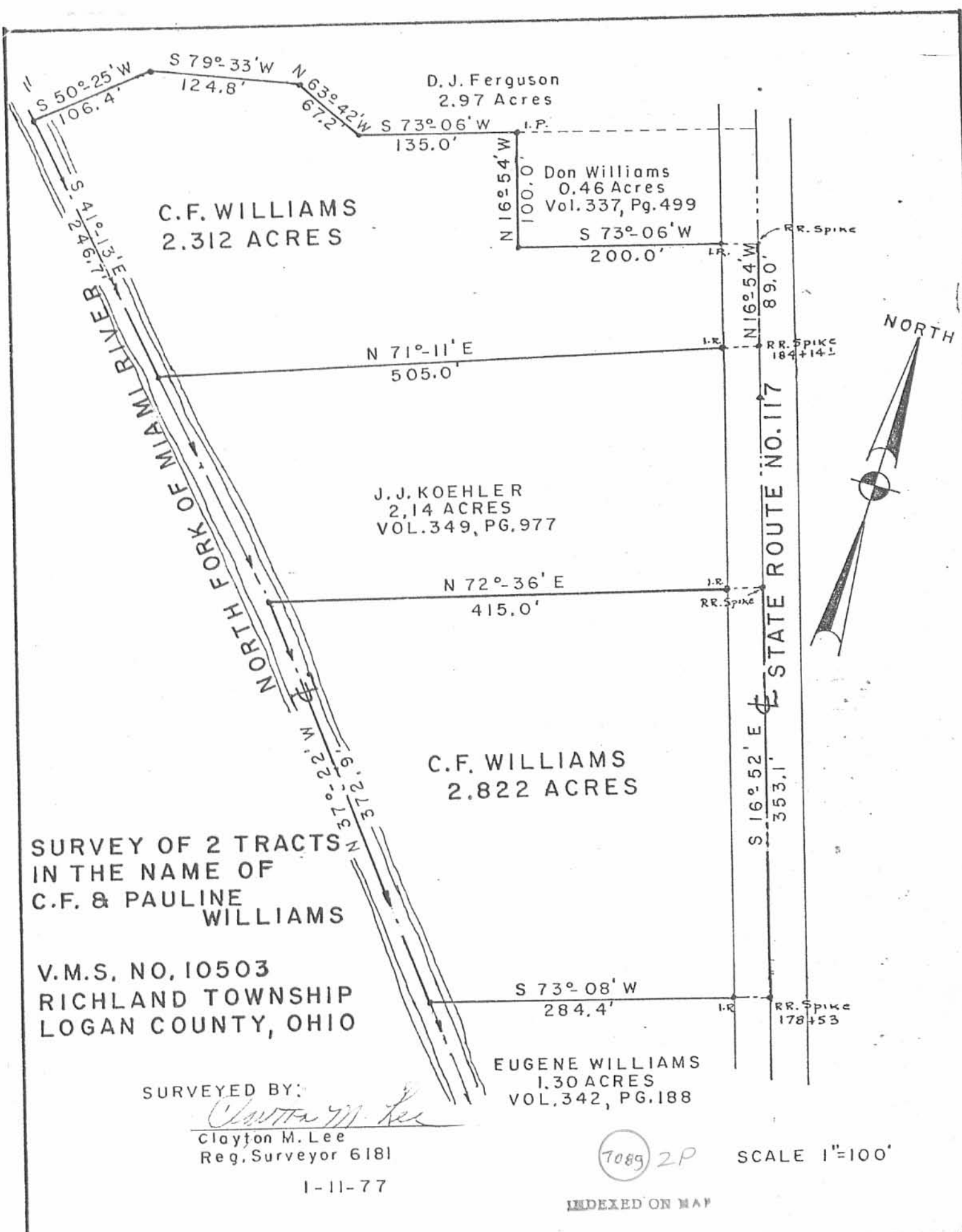
Clayton M. Lee

Clayton M. Lee
Reg. Surveyor 6181
February 2, 1977



7089 20

INDEXED ON M.



D. J. Ferguson
2.97 Acres

C.F. WILLIAMS
2.312 ACRES

Don Williams
0.46 Acres
Vol. 337, Pg. 499

J. J. KOEHLER
2.14 ACRES
VOL. 349, PG. 977

C.F. WILLIAMS
2.822 ACRES

EUGENE WILLIAMS
1.30 ACRES
VOL. 342, PG. 188

SURVEY OF 2 TRACTS
IN THE NAME OF
C.F. & PAULINE
WILLIAMS

V.M.S. NO. 10503
RICHLAND TOWNSHIP
LOGAN COUNTY, OHIO

SURVEYED BY:
Clayton M. Lee
Clayton M. Lee
Reg. Surveyor 6181

1-11-77

7089 2P

SCALE 1"=100'

INDEXED ON MAP