



LESLIE H. GEESLIN  
REGISTERED SURVEYOR NO. 5248  
P O. BOX 274  
RUSHSVLVANIA, OHIO 43347

TELEPHONE: (513) 468-2793

LAUGHLIN SURVEY  
March, 1988

*Leslie H. Geeslin*

The following described real estate situated in the State of Ohio, County of Logan, Township of Richland, being part of Virginia Military Surveys 13116 and 13137 and more particularly described as follows:

Beginning at a point in the center of an open ditch in the east line of Joel Berry's 21.832 acre tract as described in O. R. Vol.15 Page 441, said point being N. 6° 27' 57" W. 1035.11 feet from a railroad spike in the centerline of State Route 273.

Thence with said Berry's east line N. 6° 27' 57" W. (This bearing is assumed and all other bearings are from angles and distances measured in this field survey) 1034.01 feet to a 0.625 inch iron bar in the south line of Carl L. Mack's 49.25 acre tract as described in D.B. Vol.337 Page 547.

Thence with said Mack's south line and the south line of V.M.S. 14032 N. 83° 19' 14" E. 363.00 feet to a 0.625 inch iron bar at the northeast corner of V.M.S. 13116.

Thence with said Mack's south line and the north line of V.M.S. 13137 N. 84° 00' 53" E. 186.71 feet to a point in the center of an open ditch.

Thence with said open ditch the following five courses: S. 4° 51' 42" W. 332.26 feet, S. 22° 19' 45" W. 251.57 feet, S. 31° 38' 57" W. 201.31 feet. S. 30° 58' 54" W. 190.59 feet and S. 28° 13' 39" W. 216.29 feet to the place of beginning.

Containing 7.998 acres more or less of which 6.528 acres are in V.M.S. 13116 and 1.47 acres are in V.M.S. 13137.

INDEXED ON MAP  
7747

10

5/8" IRON BAR  
FD.

CARL L. MACK  
49.25 AC

D.B. VOL. 337 PG 547

BELLE CENTER CORP.  
N. 83° 19' 14" E. 363.00' 186.71

LINE  
N. 84° 00' 53" E.

6.528 A.

1.47 A

7.998 AC.

JEANNE LAUGHLIN  
170.00 AC.  
DB VOL 408 PG 106

JOEL BERRY  
21.832  
OR VOL 15 PG 441

BELLE CENTER CORPORATION LINE  
1034.01'

N. 6° 27' 57" W.

S. 28° 13' 39" W.  
216.29'

S. 30° 58' 54" W. 190.59'  
S. 31° 38' 57" W. 201.31'  
S. 22° 19' 45" W. 251.57'  
S. 4° 51' 42" W. 332.26'  
OPEN DITCH

VMS 13116  
VMS 13137



SURVEY OF 7.968 AC. TRACT  
IN VIRGINIA MILITARY SURVEYS  
13116 AND 13137, RICHLAND  
TOWNSHIP, LOGAN COUNTY, OHIO  
FOR JEANNE LAUGHLIN.  
MARCH, 1988  
SCALE: 1" = 100'



INDEXED ON MAP  
7747

1P

Leslie H. Geeslin  
LESLIE H. GEESLIN  
RUSHSVANNA, OHIO

R.R. SPIKE FD  
SR 273

1035.11'

**LESLIE H. GEESLIN**

**REGISTERED SURVEYOR 5248**

**P. O. BOX 274**

**RUSHSVLVANIA, OHIO 43347**

**TELEPHONE: (513) 468-2793**

JOHNS SURVEY

August 29, 1996

The following described real estate situated in the State of Ohio, County of Logan, Township of Richland, being part of Virginia Military Survey 13116 and more particularly described as follows:

Beginning at a cap and nail set in the centerline of State Route 273 at the southeast corner of David S. Johns' 0.41 acre tract as described in D. B. Vol. 324 page 75.

Thence with said Johns' east line N. 6° 20' 22" W. 157.00 feet to a 5/8 inch iron bar set at said Johns' northeast corner, passing a 5/8 inch iron bar set at 30.50 feet.

Thence with said Johns' north line N. 86° 42' 00" W. 115.00 feet to a 5/8 inch iron bar set in the east line of David G. Barker, etux's 55.563 acre tract as described in O. R. Vol. 259 Page 55.

Thence with said Barker's east line N. 6° 20' 22" W. 73.00 feet to a 5/8 inch iron bar set.

Thence N. 83° 39' 38" E. 147.88 feet to a 5/8 inch iron bar set.

Thence S. 6° 20' 22" E. 255.12 feet to a cap and nail set in the centerline of said S. R. 273, passing a 5/8 inch iron bar set at 224.62 feet.

Thence with the centerline of said S. R. 273 N. 86° 42' 00" W. 35.00 feet to the place of beginning.

Containing 0.415 acre more or less of which 0.024 acre is in the right of way of State Route 273.

The above described 0.415 acre tract being part of Jeanne Laughlin, Trustee of Jeanne Laughlin's Living Trust 170 acre tract (Tract 1) as described in O. R. Vol. 165 page 899.

Bearings are based on an assumed bearing (N. 86° 42' 00" W.) for the centerline of State Route 273 in this field survey by Leslie H. Geeslin, Reg. Surveyor 5248 on August 29, 1996.

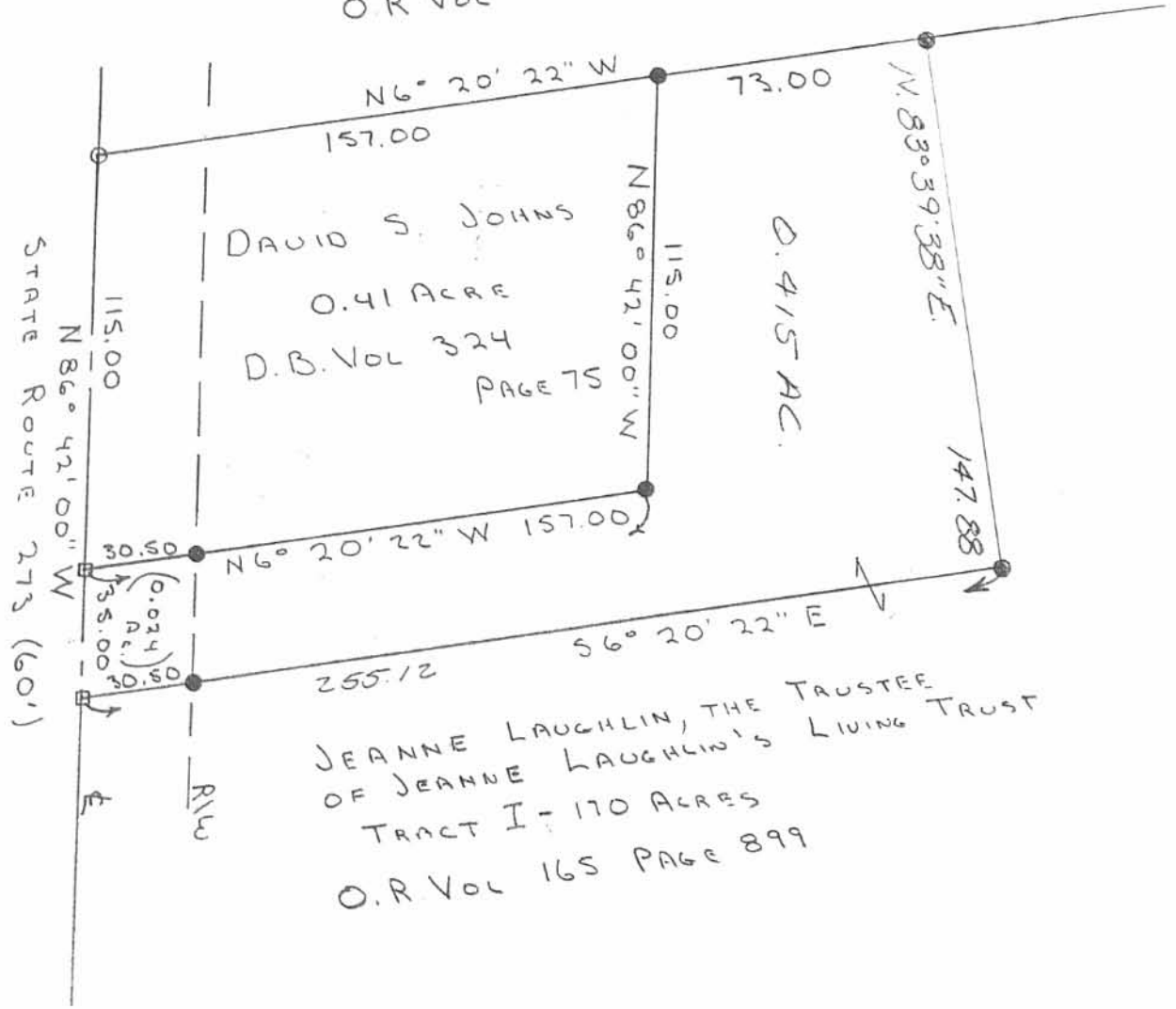


RI A:A12JOHNS.SAM

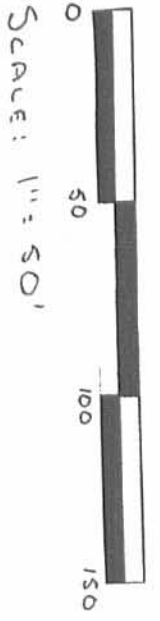
INDEXED ON MAP  
7747 2D

*Leslie H. Geeslin*

DAVID G. BARKER, ETUX  
 SS. 563 ACRES  
 O.R. VOL 259 PAGE 55



JEANNE LAUGHLIN, THE TRUSTEE  
 OF JEANNE LAUGHLIN'S LIVING TRUST  
 TRACT I - 170 ACRES  
 O.R. VOL 165 PAGE 899



Scale: 1" = 50'  
 Legend:  
 O = R/R SPIKE F.O.  
 □ = CAP + NAIL SET  
 ● = 5/8" IRON BRN SET

SURVEY OF A 0.415 ACRE TRACT  
 IN V.M.S. 13116, RICHLAND TWP.,  
 LOCAN CO., OHIO, FOR DAVID S. JOHNS  
 AUGUST 29, 1996



*Leslie H. Geeslin*  
 LESLIE H. GEESLIN  
 RUSHSLUDANIN, OHIO  
 PH: (513) 468-2793  
 (D.L.G.)

7747 2P

Permanent Easement for Drainage Purposes

Richland Township  
Logan County, Ohio  
V.M.S. 13137  
September 2003

The following described Permanent Easement for drainage purposes is situated in V.M.S. 13137, Richland Township, Logan County, Ohio. Said easement being part of David Shoots Laughlin, Trustee's 161.177 acre, tract 1 (O.R. Vol. 387, page 988), which has been assigned permanent parcel number 36-022-00-00-017. Said easement being a 35.00 feet wide strip, 17.5 feet each side of the following described line.

Beginning for reference at a railroad spike found at the intersection of Ohio Route 273 with Richland Township Road No. 107. Said railroad spike found being N. 83° - 50' - 00" E., 372.36 feet from Ohio Route 273 P.T. Station 273 + 55.63 as shown on Logan County S.R. 293 right of way plans (L-13, page 6) on file in the Map Room of the Logan County Engineer's Office.

Thence, with the centerline of Ohio Route 273, S. 83° - 50' - 00" W., 286.99 feet to a point.

Thence, onto said Laughlin's 161.177 acre tract, perpendicular to the centerline of Ohio Route 273, N. 6° - 10' - 00" W., 201.74 feet to a point. Said point being 201.74 feet left of Ohio Route 273 centerline station 274 + 41.00 and is the true point of beginning for this centerline easement description.

Thence, parallel to the centerline of Ohio Route 273, N. 83° - 50' - 00" E., 299.54 feet to a point. Said point being 201.74 feet left of Ohio Route 273 centerline station 277 + 40.54. The above described line passes through a 10 inch diameter plastic riser at 5.00 feet.

Thence, S. 60° - 45' - 22" E., 266.20 feet to a point. Said point being 47.50 feet left of Ohio Route 273 centerline station 279 + 57.50.

Thence, parallel to the centerline of Ohio Route 273, N. 83° - 50' - 00" E., 762.50 feet to a point and there terminate. Said point being 47.50 feet left of Ohio Route 273 centerline station 287 + 20.00.

The above centerline description of a 35.00 feet wide permanent easement for drainage purposes contains 1.067 acres more or less.

Basis of bearing being the centerline of Ohio Route 273 (N. 83° - 50' - 00" E.) as shown on Logan County S.R. 293 right of way plans L-13 on file in the Map Room of the Logan County Engineer's Office.

The above permanent easement description was prepared from an actual field survey performed by the Logan County Engineer's Office in September 2003.

*Curtis D. Dill*  
Curtis D. Dill, Deputy Surveyor  
Logan County Engineer's Office  
Registered Surveyor No. 7310

INDEXED ON MAP  
7747

3D

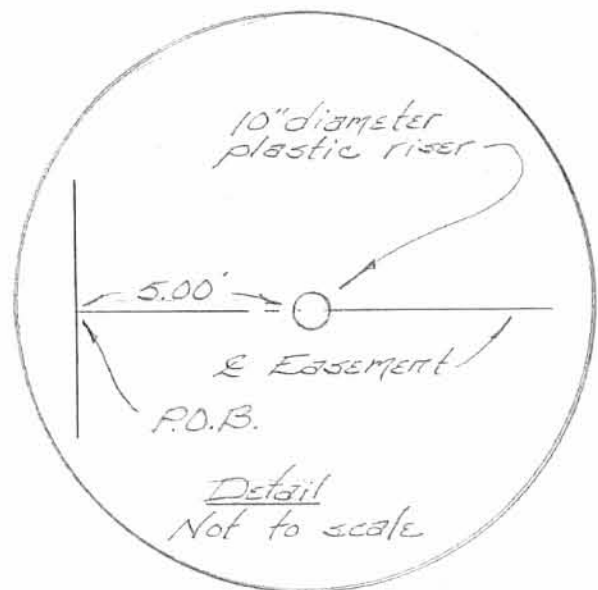


Permanent Easement for Drainage Purposes

Richland Township  
Logan County, Ohio  
V.M.S. 13137  
September 2003

Part of Parcel No. 36-022-00-00-017

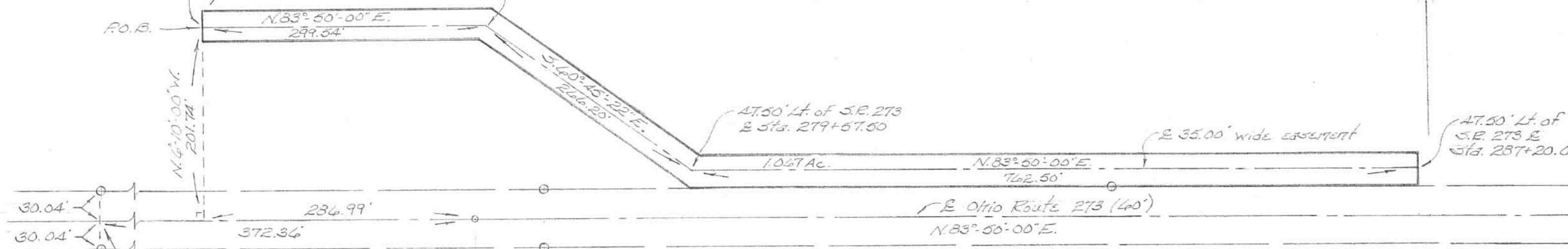
David Shoots Laughlin, Trustee  
161.177 Ac.  
O.R. Vol. 387, pg. 988



201.74' Lt. of S.R. 273  
& Sta. 274+41.00

201.74' Lt. of  
S.R. 273 & Sta. 277+40.54

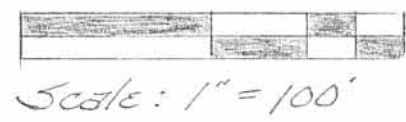
Tract 1



Fairview Cemetery

V.M.S. 9973

Basis of bearing being the centerline of Ohio Route 273 (N. 83° 50' 00" E.) as shown on Logan County S.R. 273 right of way plans L-13 on file in the Map Room of the Logan County Engineer's Office.



Legend  
o = Rail Road Spike Found  
Q = Concrete R/W Monument Found

The above permanent easement plat was prepared from an actual field survey performed by the Logan County Engineer's Office in September 2003.

3P  
INDEXED ON MAP  
7747

Curtis D. Dill  
Curtis D. Dill, Deputy Surveyor  
Logan County Engineer's Office  
Registered Surveyor No. 7310

# Lee Surveying and Mapping Co., Inc.

Land Surveys • Topography • Subdivisions • Construction Layout

117 N. Madriver St.  
Bellefontaine OH 43311



Phone: (937) 593-7335  
Fax: (937) 593-7444

## LAUGHLIN, TRUSTEE 350.048 ACRES

Lying in Virginia Military Surveys 9973, 14568, 13116, 13137, 14032 and 10502, Richland Township, Logan County, Ohio.

Being all of the David Shoots Laughlin, Trustee of the David Shoots Laughlin Living Trust, 161.177 acre tract, 21.58 acre tract, 30 acre tract, 14 acre tract and one-half acre tract as deeded and described in Official Record 338, Page 15 and Official Record 387, Page 988, Tracts I, II, III, IV and VI, the original 62.26 acre tract as deeded and described in Official Record 338, Page 19, Tract VII and the 19.93 acre tract and 47.798 acre tract as deeded and described in Official Record 378, Page 565, Tracts I and II of the Logan County Records of Deeds and being more particularly described as follows:

Beginning on a 1/2 inch by 1-1/2 inch iron bar found at a northeast corner of the Village of Belle Center Corporation on the center-line of County Highway 103 at Station 15+60.50 (Logan County Engineer's Field Book 582, Page 63).

Thence, with the center-line of County Highway 103 (50 feet wide), the following two courses:

N 86°-27'-39"E, a distance of 1644.17 feet to a 3/4 inch iron rod found at Station 32+07.50 (Logan County Engineer's Field Book 582, Page 64).

N 86°-15'-04"E, a distance of 961.70 feet to a MAG nail set.

THENCE, with the lines of the Timothy L. Vermillion 2.202 acre tract (O.R. 261, Pg. 454), the following three courses:

S 04°-10'-44"E, a distance of 285.56 feet to a 5/8 inch iron rod found, passing a PK nail found at 0.60 feet, a 5/8 inch iron rod set at 25.00 feet and a 5/8 inch iron rod found at 28.45 feet.

N 86°-17'-46"E, a distance of 343.22 feet to a 5/8 inch iron rod found.

N 07°-12'-22"W, a distance of 286.35 feet to a MAG nail set on the center-line of County Highway 103, passing a 5/8 inch iron rod found at 257.25 feet, a 5/8 inch iron rod set at 261.31 feet and a PK nail found at 285.29 feet.

THENCE, with the center-line of County Highway 103, the following two courses:

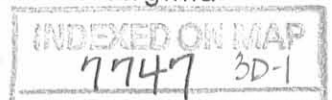
N 86°-15'-04"E, a distance of 1107.96 feet to a 3/4 inch iron rod found on the east line of Virginia Military Survey 14032 at Station 56+06.50 (Logan County Engineer's Field Book 582, Page 65).

N 83°-01'-23"E, a distance of 385.00 feet to a MAG nail set.

THENCE, with the west line of the Donn R. Volbrecht 52 acre tract (O.R. 880, Pg. 107, Tract IV), S 06°-49'-03"E, a distance of 1705.44 feet to a 5/8 inch iron rod set on the south line of Virginia Military Survey 10502.

THENCE, with the south line of Virginia Military Survey 10502 and the north line of the Donn R. Volbrecht 100.162 acre tract (O.R. 880, Pg. 107, Tracts I, II & III), S 84°-58'-02"W, a distance of 423.91 feet to a 5/8 inch iron rod found at the southeast corner of Virginia Military Survey 14032.

THENCE, with the south line of Virginia Military Survey 14032 and the north line of the Julia A. Comer, Trustee, 117.67 acre tract (O.R. 415, Pg. 454), S 83°-14'-30"W, a distance of 2337.71 feet to a 5/8 inch iron rod found on the northeast corner of Virginia Military Survey 13137.



# Lee Surveying and Mapping Co., Inc.

Land Surveys • Topography • Subdivisions • Construction Layout

117 N. Madriver St.  
Bellefontaine OH 43311



Phone: (937) 593-7335  
Fax: (937) 593-7444

THENCE, with the east line of Virginia Military Survey 13137 and the west line of the said 117.67 acre tract, S 07°-50'-34"E, a distance of 2172.97 feet to a MAG nail set on the southeast corner of Virginia Military Survey 13137 on the center-line of Ohio Route 273, passing a 5/8 inch iron rod set at 2142.97 feet.

THENCE, with the south line of Virginia Military Survey 13137 and the center-line of Ohio Route 273 (60 feet wide), S 83°-00'-52"W, a distance of 1250.80 feet to a MAG nail found, passing a railroad spike found on the intersection of the center-line of Township Road 107 at 1003.18 feet.

THENCE, with the west line of the Richland Township Trustees, 0.500 acre tract (O.R. 690, Page 706), S 07°-27'-43"E, a distance of 263.66 feet to a 5/8 inch iron rod found, passing a 5/8 inch iron rod found at 29.99 feet.

THENCE, with the south lines of the said 0.500 acre tract and the Board of Township Trustees of the Township of Richland one acre tract (Vol. 106, Pg. 318), N 83°-02'-16"E, a distance of 247.63 feet to a P.K. nail found on the center-line of Township Road 107, passing a 5/8 inch iron rod found at 227.63 feet.

THENCE, with the center-line of Township Road 107 (40 feet wide), S 07°-27'-49"E, a distance of 1488.37 feet to a MAG spike set.

THENCE, with the north lines of the Lucas W. McCarren 3 acre tract (O.R. 375, Pg. 033), the Lucas W. McCarren 20.029 acre tract (O.R. 921, Pg. 382) and the David Shoots Laughlin, Trustee, 10.912 acre tract (O.R. 801, Pg. 549), S 82°-43'-19"W, a distance of 1537.38 feet to a 5/8 inch iron rod set, passing a 5/8 inch iron rod set at 20.00 feet.

THENCE, with the east lines of the David W. Liles 124.725 acre tract (O.R. 303, Pg. 014, Tract I), the Jack W. Leonard 16.037 acre tract (O.R. 74, Pg. 125) and the Gregory S. Leonard 9.313 acre tract (O.R. 478, Pg. 58), N 07°-12'-19"W, a distance of 1874.55 feet to a 5/8 inch iron rod set on the north line of Virginia Military Survey 14568 and a south line of the Village of Belle Center Corporation, passing a 5/8 inch iron rod set at 1871.82 feet.

THENCE, with the north line of Virginia Military Survey 14568 and a south line of the Village of Belle Center Corporation and a south line of the said 9.313 acre tract, N 82°-57'-03"E, a distance of 153.20 feet to a railroad spike found on the center-line of Ohio Route 273.

THENCE, with the center-line of Ohio Route 273, S 87°-28'-46"E, a distance of 368.25 feet to a MAG spike set on the east line of Virginia Military Survey 14568, passing a MAG spike set at 150.00 feet.

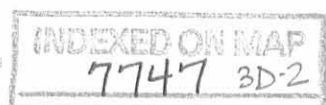
THENCE, with the east line of Virginia Military Survey 14568 and the west line of the William E. Laughlin 0.23 acre tract (Vol. 104, Pg. 86), N 07°-10'-06"W, a distance of 61.22 feet to a 5/8 inch iron rod set at the southeast corner of Virginia Military Survey 13116, passing a 5/8 inch iron rod set at 30.43 feet.

THENCE, with the south line of Virginia Military Survey 13116 and the north line of the said 0.23 acre tract, S 82°-57'-03"W, a distance of 215.14 feet to a 5/8 inch iron rod set.

THENCE, with the lines of the David S. Johns 0.415 acre tract (O.R. 314, Pg. 933), the following two courses:

N 07°-09'-50"W, a distance of 230.18 feet to a 5/8 inch iron rod set, passing a 5/8 inch iron rod found at 5.50 feet.

S 82°-52'-48"W, a distance of 147.88 feet to a 5/8 inch iron rod found on an east line of the Village of Belle Center Corporation.





# Lee Surveying and Mapping Co., Inc.

Land Surveys • Topography • Subdivisions • Construction Layout

117 N. Madriver St.  
Bellefontaine OH 43311



Phone: (937) 593-7335  
Fax: (937) 593-7444

THENCE, with an east line of the Village of Belle Center Corporation and the east lines of the James H. Keys 55.563 acre tract (O.R. 509, Pg. 448) and the New Management Services, Inc., 21.832 acre tract (O.R. 702, Pg. 379, Parcel I), N 07°-10'-06"W, a distance of 805.11 feet to a point on the center-line of the Red Slough ditch, passing a 5/8 inch iron rod set at 787.11 feet.

THENCE, with the center-line of the Red Slough ditch and the easterly lines of the Carl B. Mack 7.998 acre tract (O.R. 63, Pg. 589), the following five courses:

N 27°-31'-33"E, a distance of 216.29 feet to a point, referenced by a 5/8 inch iron rod set bearing S 65°-02'-54"E, a distance of 37.00 feet.

N 30°-16'-46"E, a distance of 190.59 feet to a point, referenced by a 5/8 inch iron rod set bearing S 59°-43'-14"E, a distance of 30.00 feet.

N 30°-56'-47"E, a distance of 201.31 feet to a point, referenced by a 5/8 inch iron rod set bearing S 59°-03'-11"E, a distance of 31.00 feet.

N 21°-37'-37"E, a distance of 251.57 feet to a point, referenced by a 5/8 inch iron rod set bearing S 68°-22'-29"E, a distance of 20.00 feet.

N 04°-09'-33"E, a distance of 332.42 feet to a point on the north line of Virginia Military Survey 13137, referenced by a 5/8 inch iron rod set bearing N 83°-25'-22"E, a distance of 35.00 feet.

THENCE, with the center-line of the Red Slough ditch and the east lines of the Carl B. Mack 49 acre tract (Vol. 337, Pg. 547), the following two courses:

N 27°-45'-52"E, a distance of 60.34 feet to a point, referenced by a 5/8 inch iron rod set bearing S 62°-14'-08"E, a distance of 20.00 feet.

N 33°-23'-47"E, a distance of 153.99 feet to a point on an east line of the Village of Belle Center Corporation, referenced by a 5/8 inch iron rod set bearing S 06°-26'-45"E, a distance of 29.23 feet.

THENCE, with an east line of the Village of Belle Center Corporation and the east lines of the Ruth E. Worley one rod wide tract and 50.831 acre tract (O.R. 233, Pg. 170, Tract I), N 06°-26'-45"W, a distance of 1736.34 feet to the point of beginning, passing a 3/4 inch iron rod found at 1711.31 feet.

Containing 350.048 acres, of which 5.260 acres are within the highway rights-of-way. There are 59.326 acres in Virginia Military Survey 9973, 2.099 acres in Virginia Military Survey 14568, 9.936 acres in Virginia Military Survey 13116, 98.804 acres in Virginia Military Survey 13137, 164.115 acres in Virginia Military Survey 14032 and 15.768 acres in Virginia Military Survey 10502.

The basis for bearings is the center-line of County Highway 103 between Station 15+60.50 and Station 32+07.50, being N 86°-27'-39"E, and all other bearings are from angles and distances measured in a field survey by Lee Surveying and Mapping Co., Inc. on March 17, 2009.

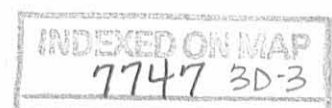


Description prepared by:

A handwritten signature in black ink that reads 'William K. Bruce'.

William K. Bruce  
Professional Surveyor 7437  
March 19, 2009,  
Revised April 14, 2009

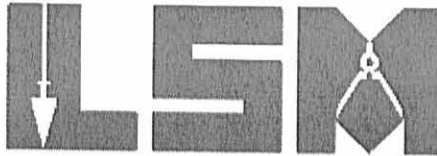
4762039



# Lee Surveying and Mapping Co., Inc.

Land Surveys • Topography • Subdivisions • Construction Layout

117 N. Madriver St.  
Bellefontaine OH 43311



Phone: (937) 593-7335  
Fax: (937) 593-7444

## LAUGHLIN 0.212 ACRE

Lying in Virginia Military Survey 14568, Richland Township, Logan County, Ohio.

Being all of the remainder of the William E. Laughlin 0.23 acre tract as deeded and described in Volume 104, Page 86 of the Logan County Records of Deeds and being more particularly described as follows:.

Beginning on a MAG spike set on the intersection of the east line of Virginia Military Survey 14568 and the center-line of Ohio Route 273.

THENCE, with the center-line of Ohio Route 273 (60 feet wide), N 87°-28'-46"W, a distance of 218.25 feet to a MAG spike set.

THENCE, with the east line of the David S. Johns 0.415 acre tract (O.R. 314, Pg. 933), and within the right-of-way of Ohio Route 273, N 07°-09'-50"W, a distance of 24.94 feet to a 5/8 inch iron rod set on the south line of Virginia Military Survey 13116.

THENCE, with the south line of Virginia Military Survey 13116 and a south line of the David Shoots Laughlin, Trustee of the David Shoots Laughlin Living Trust, 161.177 acre tract (O.R. 338, Pg. 15 and O.R. 387, Pg. 988, Tract I), N 82°-57'-03"E, a distance of 215.14 feet to a 5/8 inch iron rod set on the southeast corner of Virginia Military Survey 13116.

THENCE, with the east line of Virginia Military Survey 14568, S 07°-10'-06"E, a distance of 61.22 feet to the point of beginning, passing a 5/8 inch iron rod set at 30.79 feet.

Containing 0.212 acre, of which 0.148 acre is within the highway right-of-way.

The basis for bearings is the center-line of County Highway 103 between Station 15+60.50 and Station 32+07.50, being N 86°-27'-39"E, and all other bearings are from angles and distances measured in a field survey by Lee Surveying and Mapping Co., Inc. on March 17, 2009.

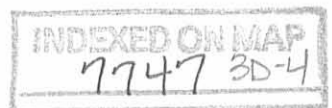


Description prepared by:

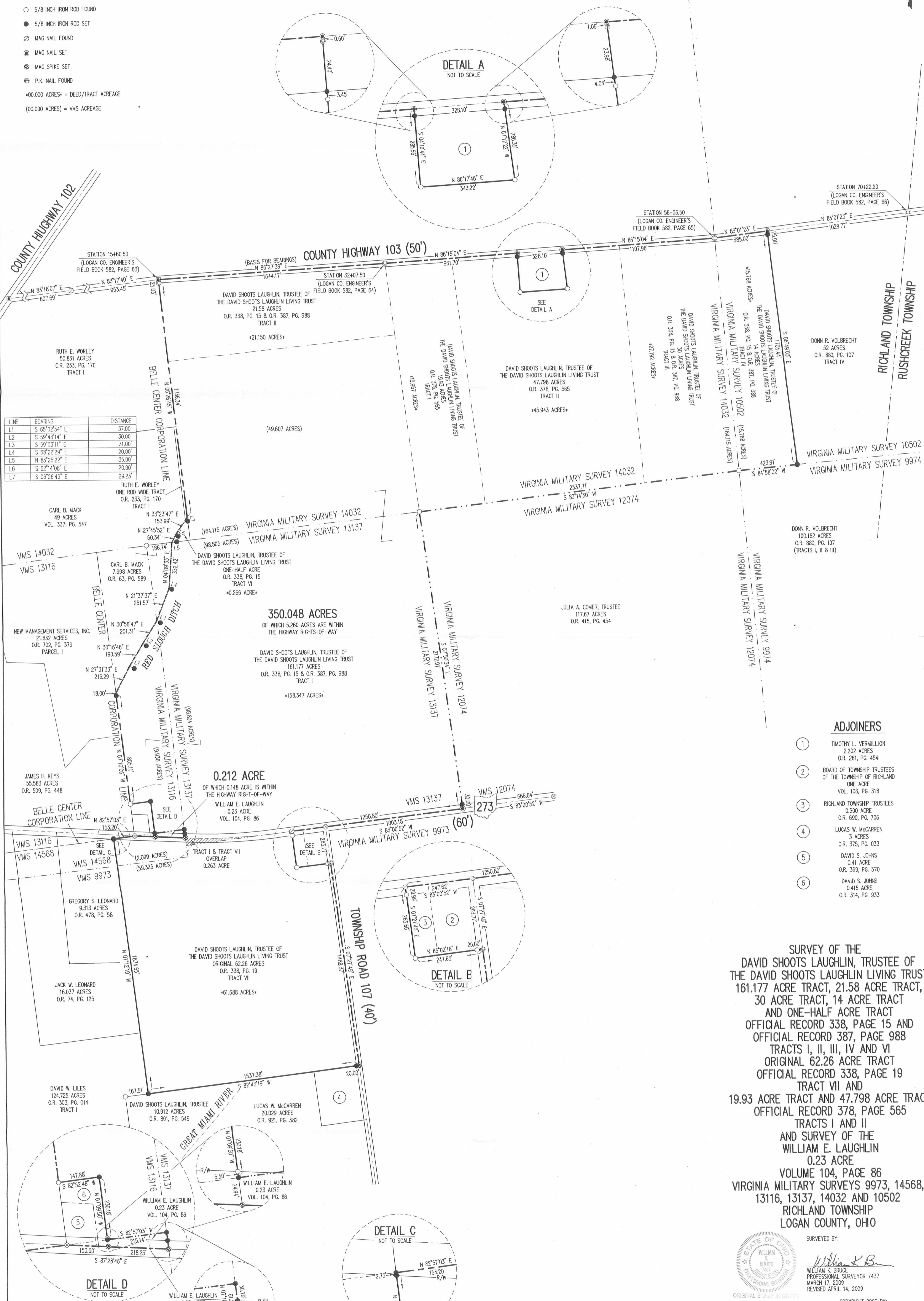
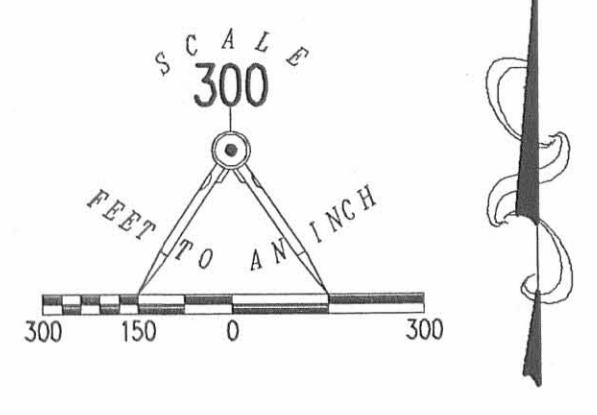
A handwritten signature in cursive script that reads 'William K. Bruce'.

William K. Bruce  
Professional Surveyor 7437  
March 26, 2009,  
Revised April 14, 2009

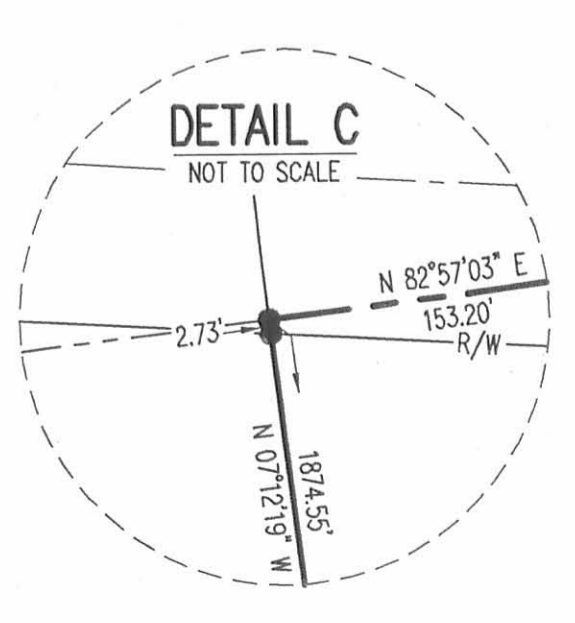
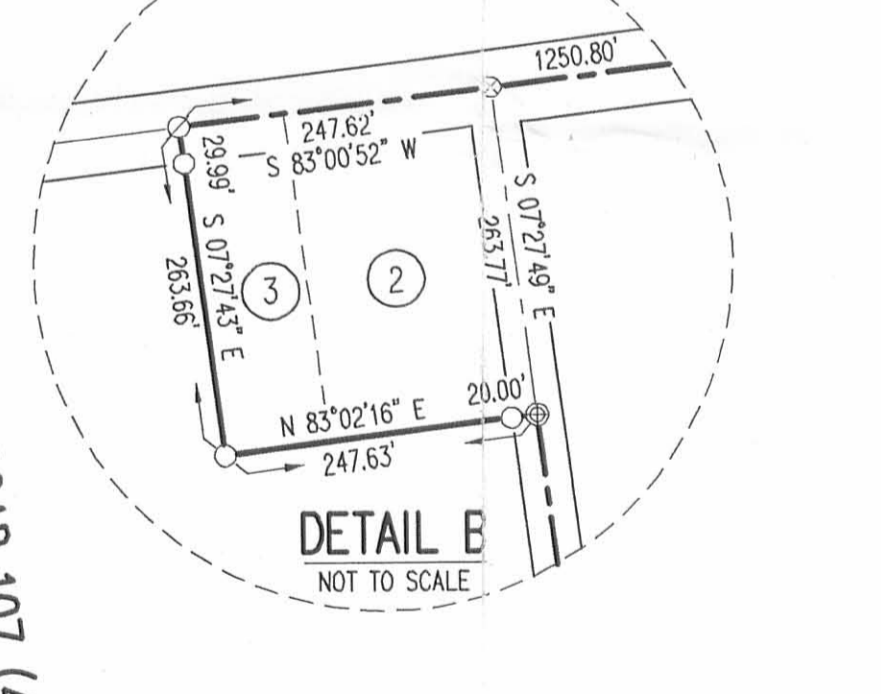
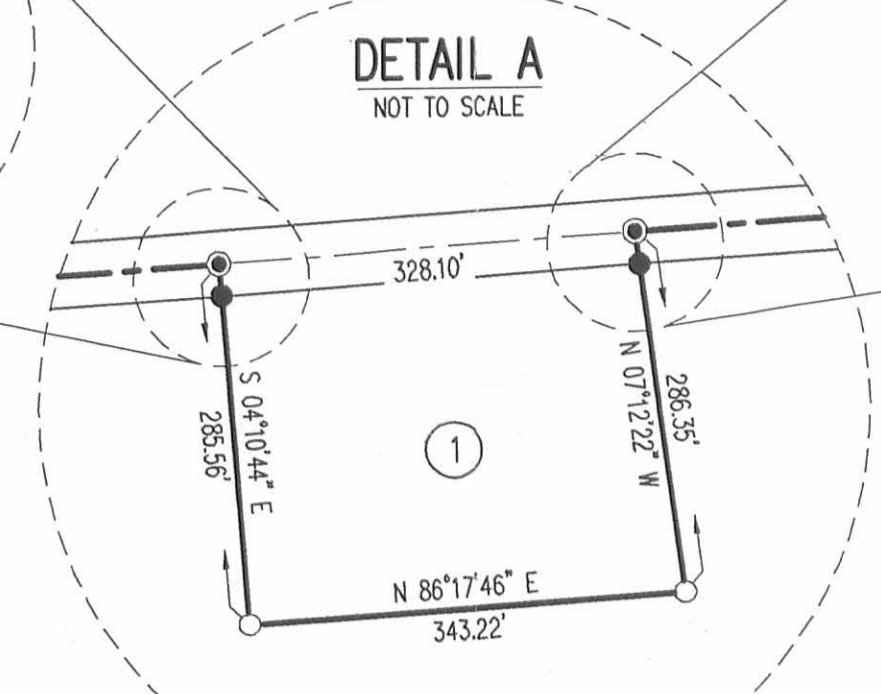
4762039



- LEGEND:
- ⊠ 5/8 INCH IRON ROD FOUND IN MONUMENT BOX
  - ⊙ 3/4 INCH IRON ROD FOUND
  - ⊠ 1/2 INCH BY 1-1/2 INCH IRON BAR FOUND
  - ⊙ RAILROAD SPIKE FOUND
  - 5/8 INCH IRON ROD FOUND
  - 5/8 INCH IRON ROD SET
  - ⊙ MAG NAIL FOUND
  - ⊙ MAG NAIL SET
  - ⊙ MAG SPIKE SET
  - ⊙ P.K. NAIL FOUND
  - \*0.000 ACRES\* = DEED/TRACT ACREAGE
  - (00.000 ACRES) = VMS ACREAGE



LINE	BEARING	DISTANCE
L1	S 65°02'54" E	37.00'
L2	S 59°43'14" E	30.00'
L3	S 59°03'11" E	31.00'
L4	S 68°22'29" E	20.00'
L5	N 83°25'22" E	35.00'
L6	S 62°14'08" E	20.00'
L7	S 06°26'45" E	29.23'



**ADJOINERS**

- 1 TIMOTHY L. VERMILLION  
2.202 ACRES  
O.R. 261, PG. 454
- 2 BOARD OF TOWNSHIP TRUSTEES  
OF THE TOWNSHIP OF RICHLAND  
ONE ACRE  
VOL. 106, PG. 318
- 3 RICHLAND TOWNSHIP TRUSTEES  
0.500 ACRE  
O.R. 690, PG. 706
- 4 LUCAS W. MCCARREN  
3 ACRES  
O.R. 375, PG. 033
- 5 DAVID S. JOHNS  
0.41 ACRE  
O.R. 399, PG. 570
- 6 DAVID S. JOHNS  
0.415 ACRE  
O.R. 314, PG. 933

**SURVEY OF THE  
DAVID SHOOTS LAUGHLIN, TRUSTEE OF  
THE DAVID SHOOTS LAUGHLIN LIVING TRUST  
161.177 ACRE TRACT, 21.58 ACRE TRACT,  
30 ACRE TRACT, 14 ACRE TRACT  
AND ONE-HALF ACRE TRACT  
OFFICIAL RECORD 338, PAGE 15 AND  
OFFICIAL RECORD 387, PAGE 988  
TRACTS I, II, III, IV AND VI  
ORIGINAL 62.26 ACRE TRACT  
OFFICIAL RECORD 338, PAGE 19  
TRACT VII AND  
19.93 ACRE TRACT AND 47.798 ACRE TRACT  
OFFICIAL RECORD 378, PAGE 565  
TRACTS I AND II  
AND SURVEY OF THE  
WILLIAM E. LAUGHLIN  
0.23 ACRE  
VOLUME 104, PAGE 86  
VIRGINIA MILITARY SURVEYS 9973, 14568,  
13116, 13137, 14032 AND 10502  
RICHLAND TOWNSHIP  
LOGAN COUNTY, OHIO**



SURVEYED BY:  
*William K. Bruce*  
WILLIAM K. BRUCE  
PROFESSIONAL SURVEYOR 7437  
MARCH 17, 2009  
REVISED APRIL 14, 2009

COPYRIGHT 2009 BY:  
LEE SURVEYING & MAPPING CO., INC.  
117 North McDevitt Street  
BELLEFONTAINE, OHIO 43311  
(937) 593-7335  
surveys@lsmc.us  
KSS D0309 4762039 L-4762-1

2 WORKING DAYS  
**BEFORE YOU DIG**  
CALL TOLL FREE 800-362-2764  
OHIO UTILITIES PROTECTION SERVICE