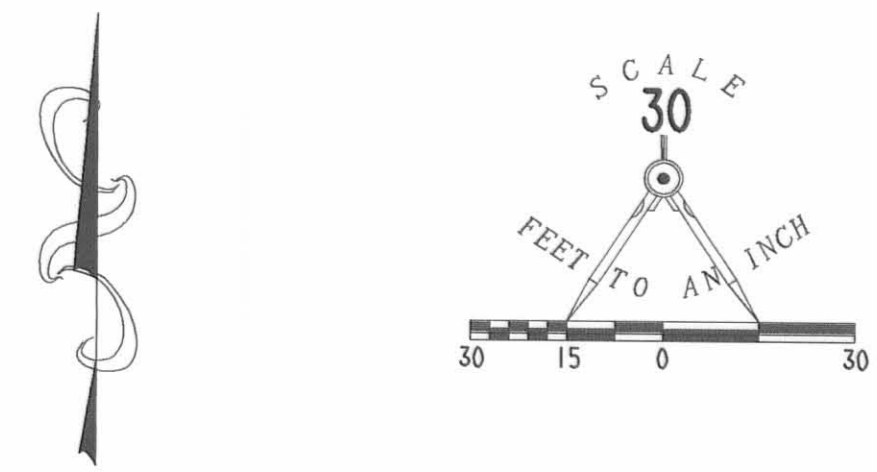


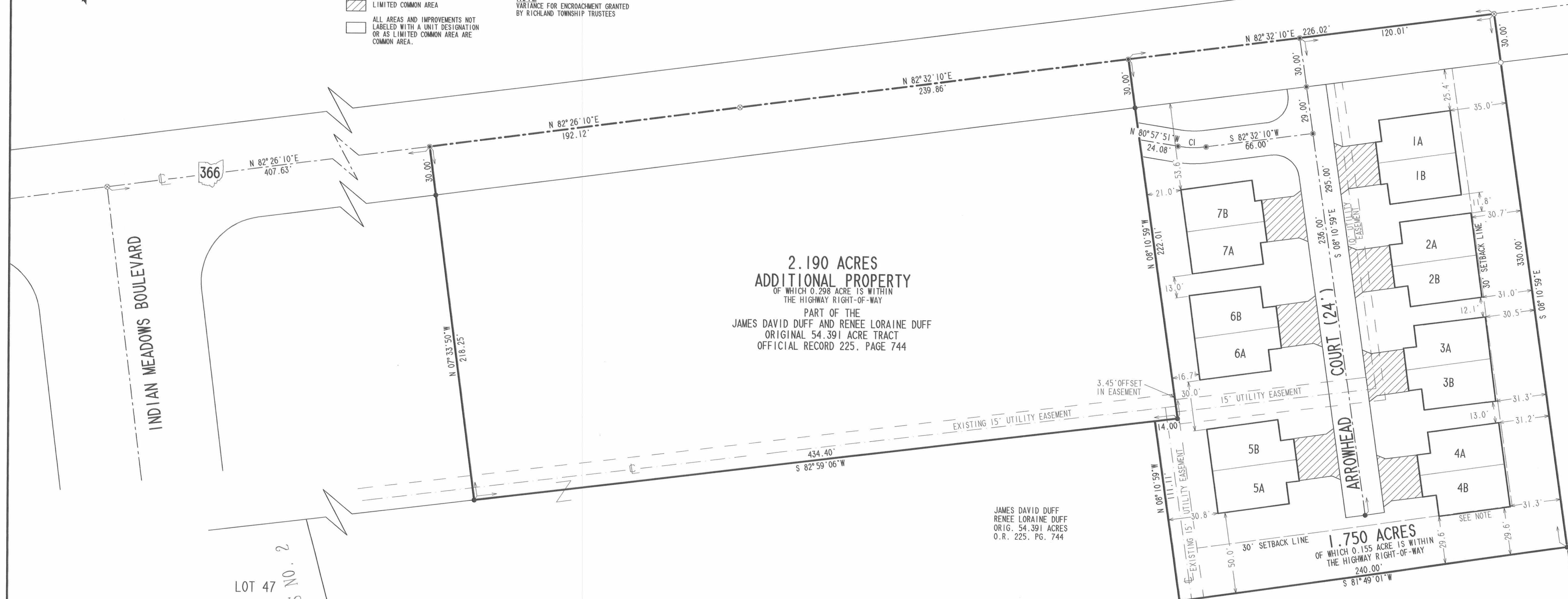
CURVE	DELTA ANGLE	RADIUS	ARC	TANGENT	CHORD	CHORD BEARING
C 1	16°30'00"	60.00'	17.28'	8.70'	17.22'	N 89°12'51"W



- LEGEND**
- 5/8" IRON ROD SET
 - 5/8" IRON ROD FOUND
 - MAG NAIL SET
 - ⊗ RAILROAD SPIKE FOUND
 - 12A UNIT NUMBER
 - ▨ LIMITED COMMON AREA
 - ALL AREAS AND IMPROVEMENTS NOT LABELED WITH A UNIT DESIGNATION OR AS LIMITED COMMON AREA ARE COMMON AREA.

REFERENCES
 LOGAN COUNTY ENGINEER'S FILES:
 PLAT OF INDIAN MEADOWS NO. 2
 PLAT CABINET B, SLIDE 8A & 82
 OK SHIRKS BOOK 9, PAGES 43 & 42
 R-3878

NOTE
 VARIANCE FOR ENCROACHMENT GRANTED
 BY RICHLAND TOWNSHIP TRUSTEES



**2.190 ACRES
 ADDITIONAL PROPERTY**
 OF WHICH 0.298 ACRE IS WITHIN
 THE HIGHWAY RIGHT-OF-WAY
 PART OF THE
 JAMES DAVID DUFF AND RENEE LORAINE DUFF
 ORIGINAL 54.391 ACRE TRACT
 OFFICIAL RECORD 225, PAGE 744

JAMES DAVID DUFF
 RENEE LORAINE DUFF
 ORIG. 54.391 ACRES
 O.R. 225, PG. 744

1.750 ACRES
 OF WHICH 0.155 ACRE IS WITHIN
 THE HIGHWAY RIGHT-OF-WAY
 240.00'
 S 81°49'01"W

JOHN A. COCHRAN AND
 JULIA E. COCHRAN
 5.00 ACRE
 O.R. 105, PG. 576

LOT 47
 LOT 46
 INDIAN MEADOWS ESTATES NO. 2
 PLAT CABINET B, SLIDE 8A & 8B

CONDOMINIUM DRAWING FOR
 PHASE I - 1.750 ACRES
INDIAN RIDGE CONDOMINIUMS
 VIRGINIA MILITARY SURVEY 9947
 RICHLAND TOWNSHIP
 LOGAN COUNTY, OHIO

PART OF THE
 JAMES DAVID DUFF AND
 RENEE LORAINE DUFF
 ORIGINAL 54.391 ACRES
 OFFICIAL RECORD 225, PAGE 774

WE DO HEREBY STATE THAT THIS DRAWING OF INDIAN RIDGE CONDOMINIUM
 SHOWS ALL BUILDINGS AS CONSTRUCTED.



Michael W. Bow
 MICHAEL W. BOW
 PROFESSIONAL ENGINEER 38860
 MARCH 23, 1998

Jeffrey I. Lee
 JEFFREY I. LEE
 PROFESSIONAL SURVEYOR 6359
 MARCH 23, 1998

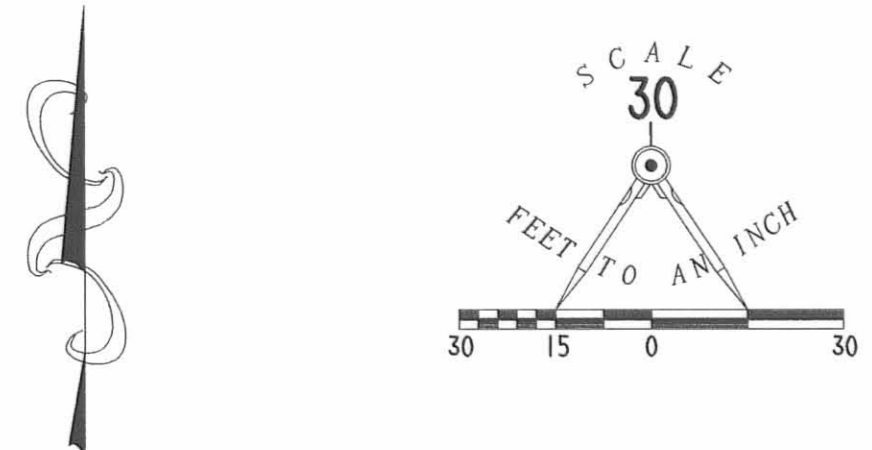


LEE SURVEYING & MAPPING CO., INC.
 117 North Madriver Street
 BELLEFONTAINE, OHIO 43311
 (937) 593-7335

THE M & K ENGINEERING CO.
 1691 T.R. 31 North
 BELLEFONTAINE, OHIO 43311
 (937) 592-2697

APPROVED BY THE L.U.C. PLANNING COMMISSION
 THIS 9th DAY OF October, 1998.
Carroll L. Scott
 CLERK, PLANNING COMMISSION
 PRE-APPROVAL *Jon C. Hines* 10-6-98
 PLAT CHECKED *Jon C. Hines* 10-19-98
 TRANSFERRED THIS 20th DAY OF OCTOBER, 1998.
Michael E. Gidew
 AUDITOR, LOGAN COUNTY, OHIO 9810504
 RECORDED IN PLAT CABINET B, SLIDE 35-B + 36-A
 RECEIVED FOR RECORD AT 10:15:01 O'CLOCK A.M.
 THIS 20th DAY OF OCTOBER, 1998.
Carolyn Collins
 RECORDER, LOGAN COUNTY, OHIO

2 WORKING DAYS
BEFORE YOU DIG
 CALL TOLL FREE 800-362-2764
 OHIO UTILITIES PROTECTION SERVICE.



- LEGEND**
- 5/8" IRON ROD SET
 - 5/8" IRON ROD FOUND
 - ⊙ MAG NAIL SET
 - ⊗ RAILROAD SPIKE FOUND
 - 12A UNIT NUMBER
 - ▨ LIMITED COMMON AREA
 - ALL AREAS AND IMPROVEMENTS NOT LABELED WITH A UNIT DESIGNATION OR AS LIMITED COMMON AREA ARE COMMON AREA.

REFERENCES
 LOGAN COUNTY ENGINEER'S FILES:
 PLAT OF INDIAN MEADOWS NO. 2
 PLAT CABINET B, SLIDE 8A & 82
 OK SHIRKS BOOK 9, PAGES 43 & 42
 R-3878

CURVE	DELTA ANGLE	RADIUS	ARC	TANGENT	CHORD	CHORD BEARING
C 1	16°30'00"	60.00'	17.28'	8.70'	17.22'	N 89°12'51"W
C 2	16°30'00"	60.00'	17.28'	8.70'	17.22'	N 89°12'51"W



DARREN STIDHAM
 0.971 ACRES
 O.R. 499, PG. 744

JOHN A. COCHRAN AND
 JULIA E. COCHRAN
 5.00 ACRE
 O.R. 105, PG. 576

NOTE:
 * INDICATES THAT AS OF SEPTEMBER 7, 2001, IMPROVEMENTS TO THE UNITS HAVE BEGUN BUT ARE "(NOT YET COMPLETED)".

WE DO HEREBY STATE THAT THIS DRAWING OF INDIAN RIDGE CONDOMINIUM SHOWS ALL BUILDINGS AS CONSTRUCTED.



Michael W. Bow
 MICHAEL W. BOW
 PROFESSIONAL ENGINEER 38860
 AUGUST 17, 2001

Jeffrey L. Lee
 JEFFREY L. LEE
 PROFESSIONAL SURVEYOR 6359
 AUGUST 17, 2001



THE M & K ENGINEERING CO.
 1691 T.R. 31 North
 BELLEFONTAINE, OHIO 43311
 (937) 592-2697

LEE SURVEYING & MAPPING CO., INC.
 117 North Madriver Street
 BELLEFONTAINE, OHIO 43311
 (937) 593-7335

CONDOMINIUM DRAWING FOR
 PHASE II - 2.190 ACRES
INDIAN RIDGE CONDOMINIUMS
 VIRGINIA MILITARY SURVEY 9947
 RICHLAND TOWNSHIP
 LOGAN COUNTY, OHIO

PART OF THE
 JAMES DAVID DUFF AND
 RENEE LORAINE DUFF
 ORIGINAL 54.391 ACRES
 OFFICIAL RECORD 225, PAGE 744

APPROVED BY THE L.U.C. PLANNING COMMISSION
 THIS 21 DAY OF SEPTEMBER, 2001.
Gregg A. Harris
 DIRECTOR, PLANNING COMMISSION

PRE-APPROVAL *Jon C. Hines* 9-7-01
 PLAT CHECKED *Jon C. Hines* 9-20-01
 TRANSFERRED THIS 21st DAY OF SEPTEMBER, 2001.

Michael E. Anderson
 AUDITOR, LOGAN COUNTY, OHIO

RECORDED IN PLAT CABINET B, SLIDE 69A & 69B
 RECEIVED FOR RECORD AT 1:10 pm 0'CLOCK p.m.
 THIS 21 DAY OF September, 2001.
Linda Hanson
 RECORDER, LOGAN COUNTY, OHIO

2 WORKING DAYS
BEFORE YOU DIG
 CALL TOLL FREE 800-362-2764
 OHIO UTILITIES PROTECTION SERVICE.

REAR ELEVATION

EXHIBIT B

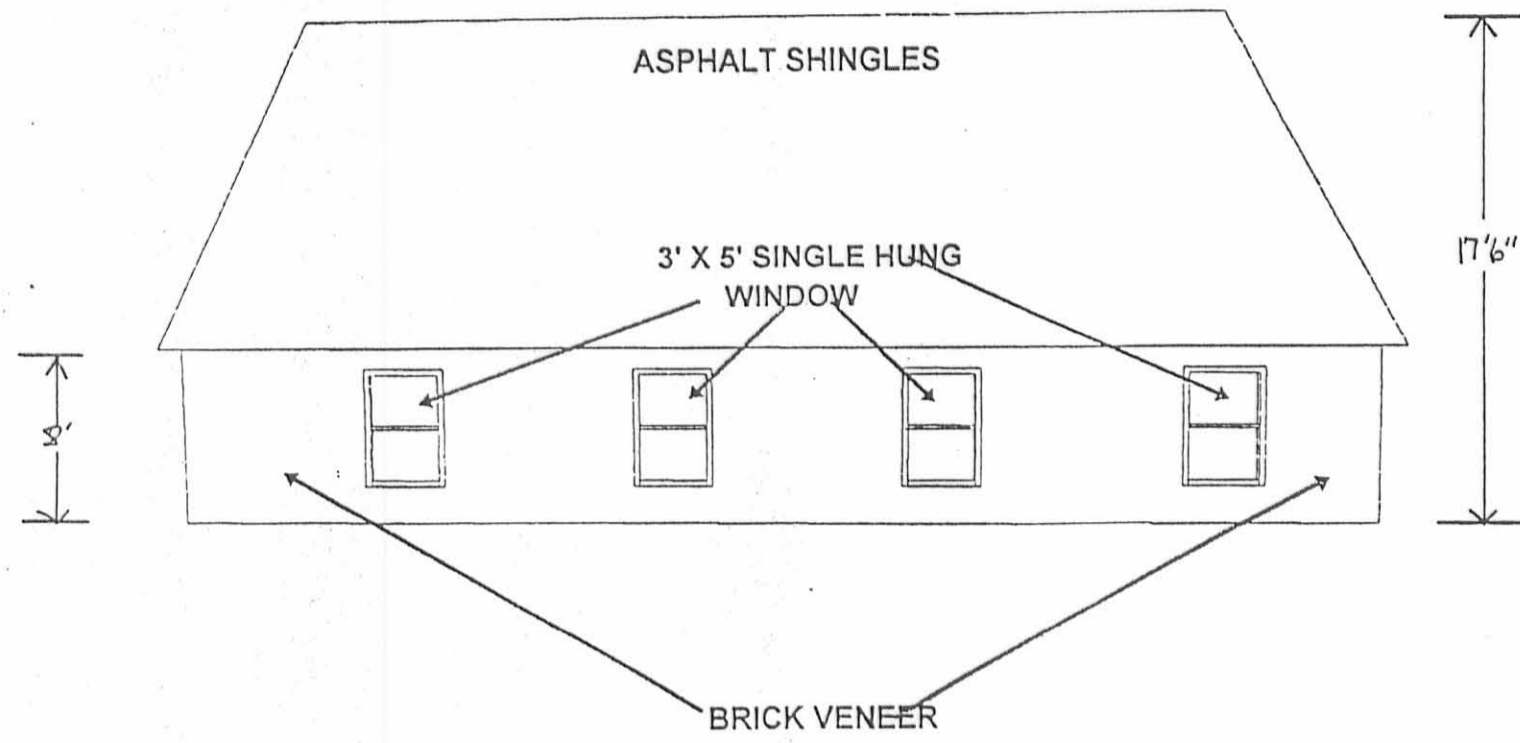
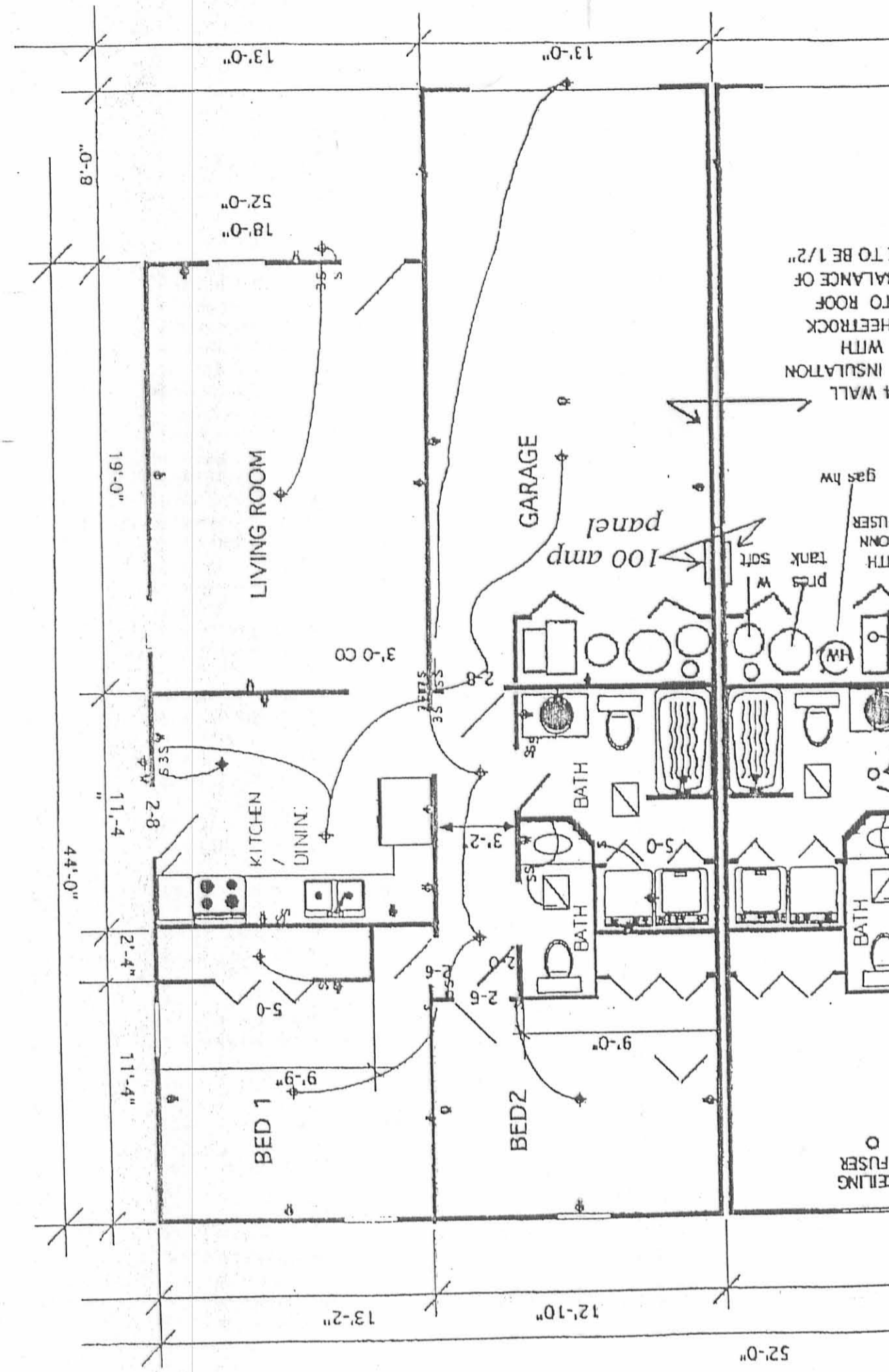


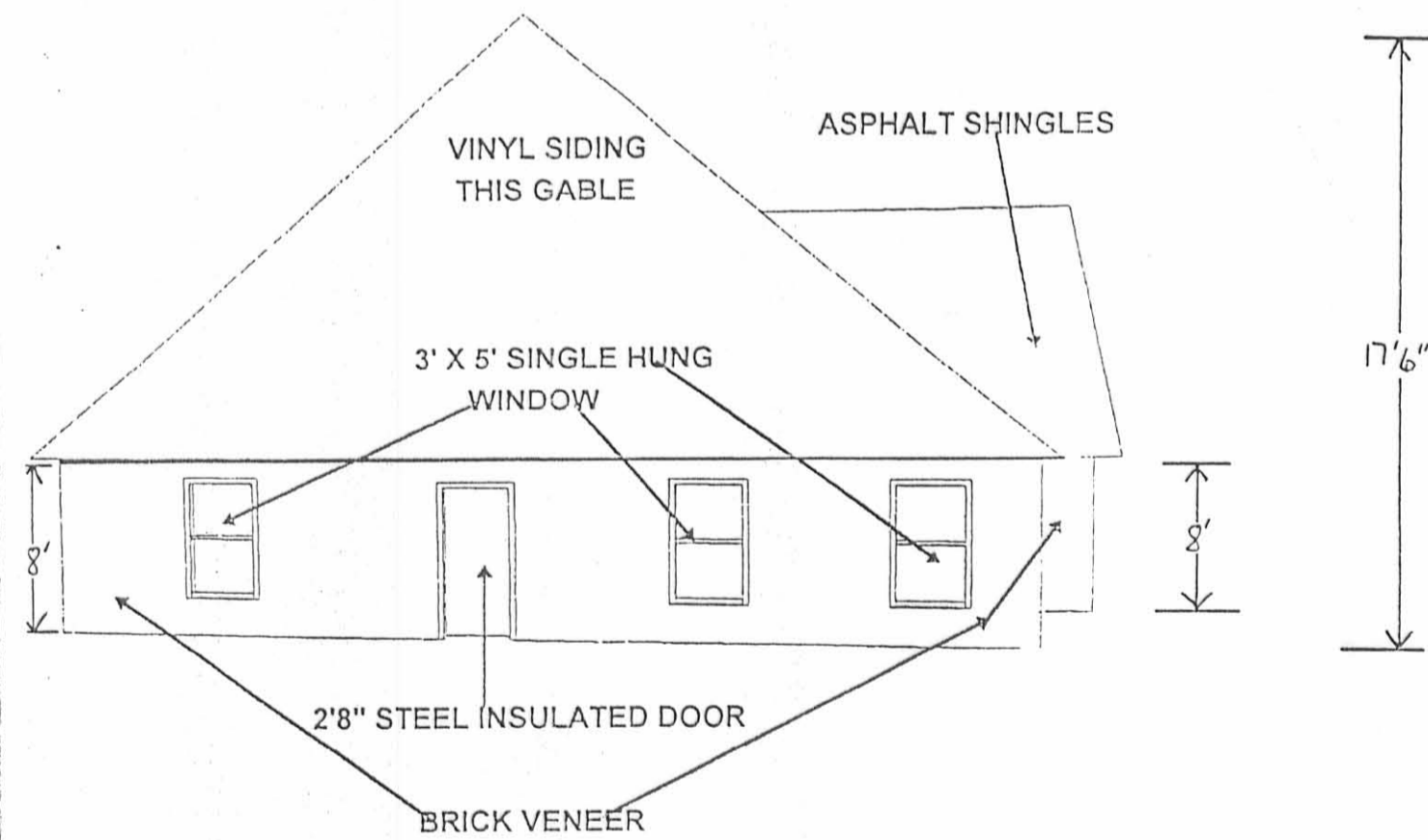
EXHIBIT B

UNITS 8A; 8B
 9A, 9B
 10A, 10B
 11A, 11B
 12A, 12B
 13A, 13B
 14A, 14B
 15A, 15B



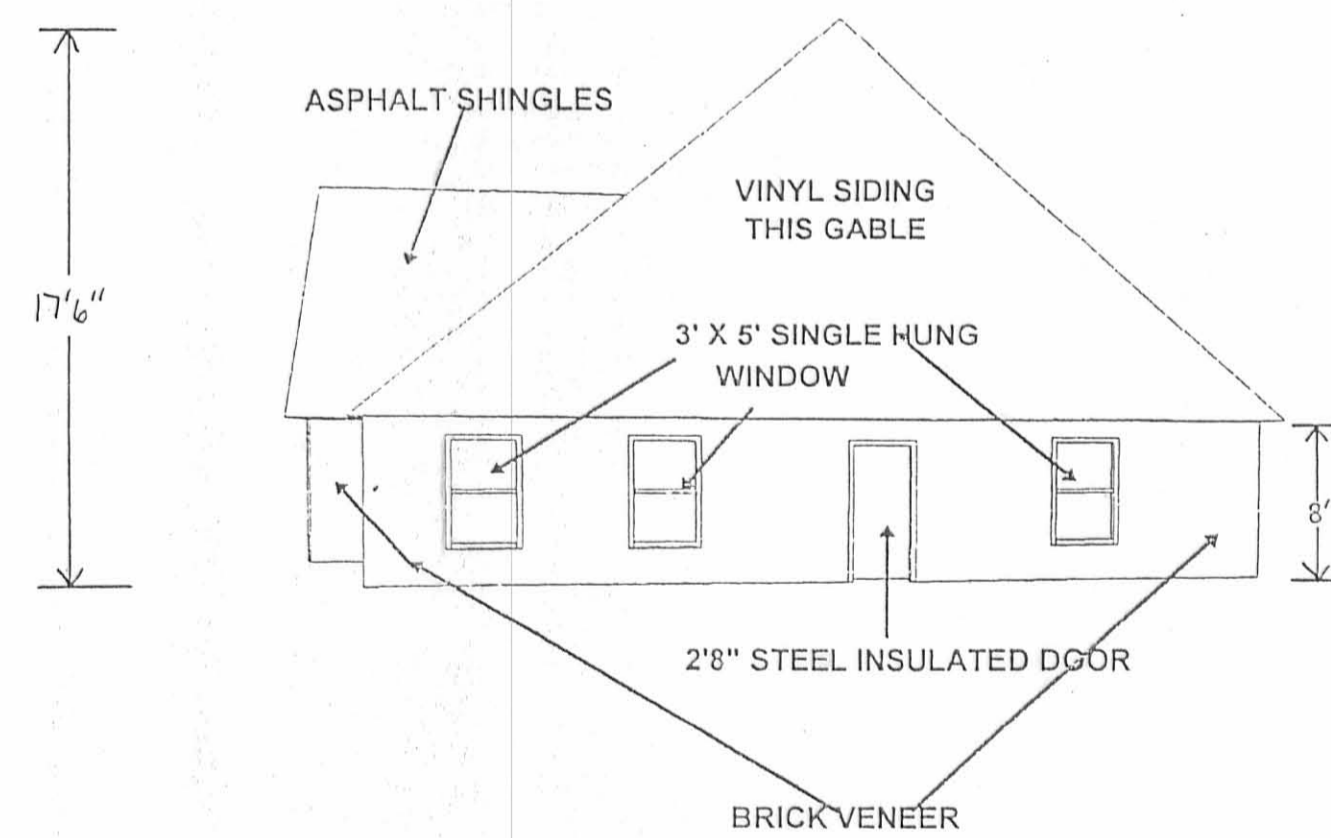
LEFT ELEVATION

EXHIBIT B

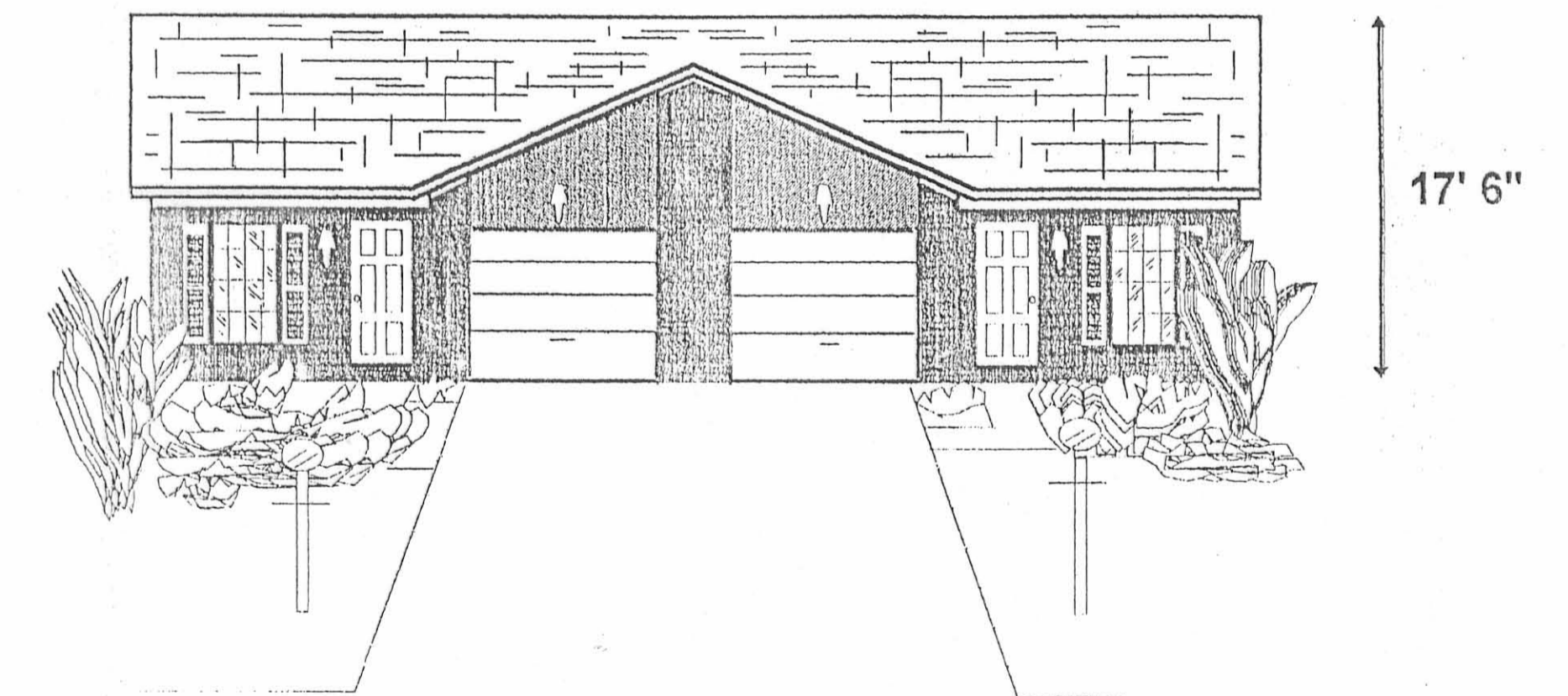


RIGHT ELEVATION

EXHIBIT B



52'



CONDOMINIUM DRAWING FOR
 PHASE II - 2.190 ACRES
INDIAN RIDGE CONDOMINIUMS
 VIRGINIA MILITARY SURVEY 9947
 RICHLAND TOWNSHIP
 LOGAN COUNTY, OHIO

PART OF THE
 JAMES DAVID DUFF AND
 RENEE LORAIN DUFF
 ORIGINAL 54.391 ACRES
 OFFICIAL RECORD 225, PAGE 744