

Lee Surveying and Mapping Co., Inc.

Land Surveys • Topography • Subdivisions • Construction Layout

117 N. Madriver St.
Bellefontaine OH 43311



Phone: (937) 593-7335
Fax: (937) 593-7444

MILLER 69.029 ACRES

Lying in Virginia Military Survey 9974, Richland and Rushcreek Townships, Logan County, Ohio.

Being all of the James M. Miller or Joy K. Miller, Trustees of the Miller Family Trust, original 68.43 acre tract as deeded and described in Official Record 375, Page 348 of the Logan County Records of Deeds and being more particularly described as follows:

Beginning at a 5/8 inch iron rod found at the northeast corner of Virginia Military Survey 9973 and the center-line extended of Ohio Route 273, which is also Point of Intersection Station 310+64.60, (Logan County Engineers' File L-13, Page 7 of 8).

THENCE, with the center-line extended and the center-line of Ohio Route 273, (60 feet wide), S 73°-07'-27" E, a distance of 1854.97 feet to a MAG nail set.

THENCE, with the west lines of the Robert E. Kerns original 38.55 acre tract, (Vol. 344, Pg. 150), and the Milan G. Carnes original 144.68 acre tract, (O.R. 56, Pg. 47) S 6°-04'-20" E, a distance of 1420.60 feet to a 5/8 inch iron rod set, passing 5/8 inch iron rods set at 32.78 and 1381.00 feet.

THENCE, with the lines of the said 144.68 acre tract, the following three (3) courses:

S 66°-31'-40" W, a distance of 274.56 feet to a 5/8 inch iron rod set.

N 14°-43'-20" W, a distance of 119.79 feet to a 5/8 inch iron rod set.

S 83°-15'-26" W, a distance of 1420.09 feet to a 5/8 inch iron rod set.

THENCE, with the east line of Virginia Military Survey 9973 and the east line of the Countrytyme Grove City Ltd 29.826 acre tract, (O.R. 402, Pg. 932, Tract F), N 6°-17'-32" W, a distance of 2124.17 feet to the point of beginning, passing a 5/8 inch iron rod found at 2060.24 feet.

Containing 69.029 acres, of which 1.887 acres are within the highway right-of-way, 15.859 acres are in Richland Township and 53.170 acres are in Rushcreek Township.

The basis for bearings is the center-line of Ohio Route 273, being S 73°-07'-27" E, and all other bearings are from angles and distances measured in a field survey by Lee Surveying and Mapping Co., Inc. on November 30, 1999.

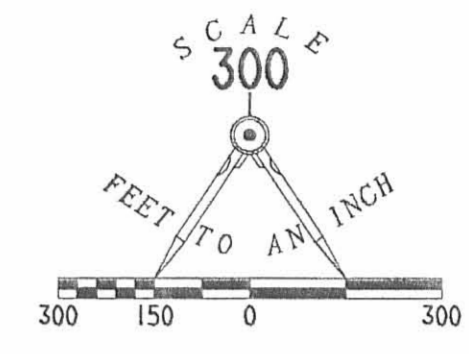
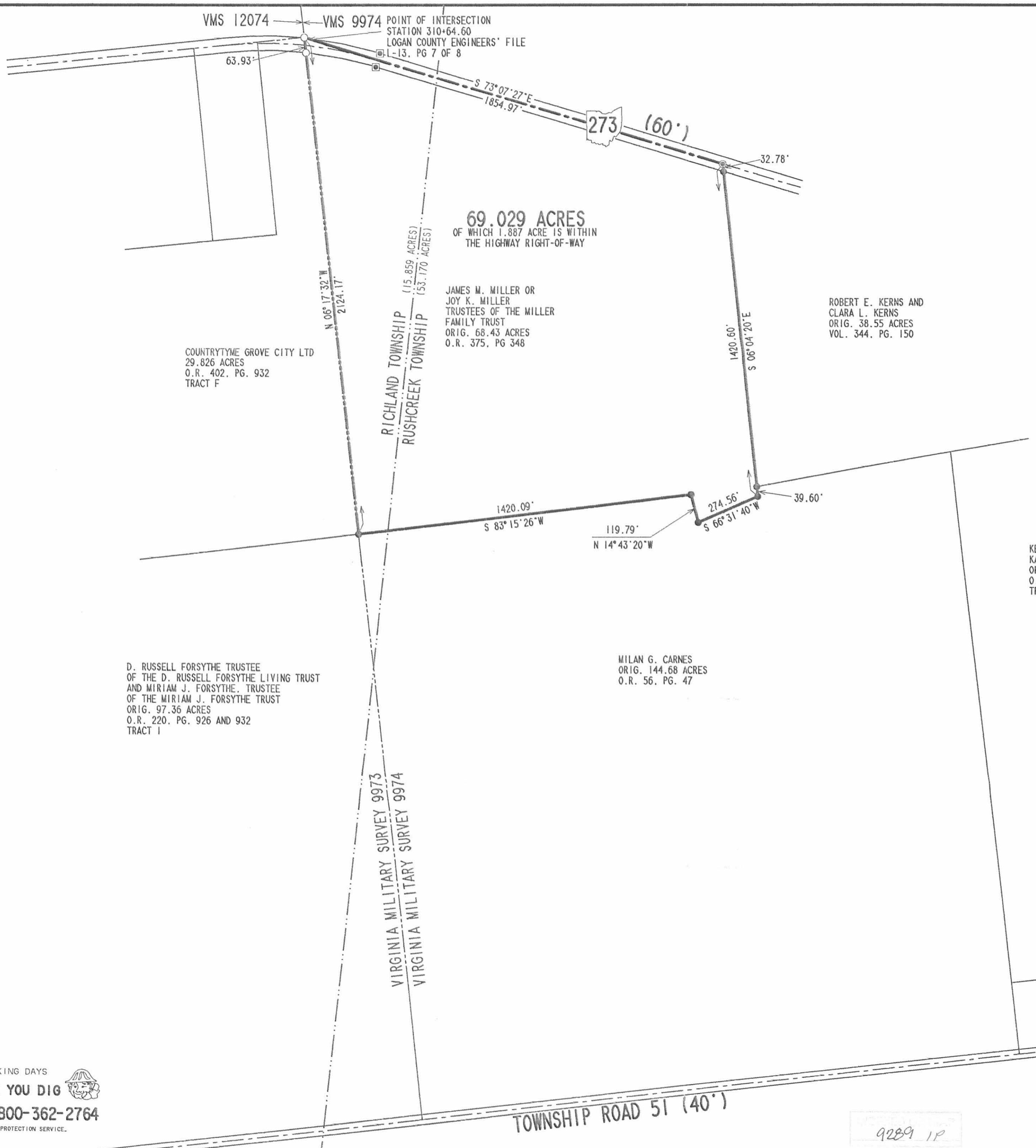
Description prepared by:

Jeffrey A. Lee
Professional Surveyor 6359
December 1, 1999



L-2607

9289 ID



- LEGEND
- 5/8 INCH IRON ROD SET
 - 5/8 INCH IRON ROD FOUND
 - CONCRETE RIGHT-OF-WAY MONUMENT FOUND
 - ⊙ MAG NAIL SET

RETRACEMENT SURVEY OF THE
JAMES M. MILLER OR JOY K. MILLER
TRUSTEES OF THE MILLER FAMILY TRUST
ORIGINAL 68.43 ACRE TRACT
OFFICIAL RECORD 375, PAGE 348
VIRGINIA MILITARY SURVEY 9974
RICHLAND AND RUSHCREEK TOWNSHIP
LOGAN COUNTY, OHIO



SURVEYED BY:
Jeffrey L. Lee
JEFFREY L. LEE
PROFESSIONAL SURVEYOR 6359
NOVEMBER 30, 1999

COPYRIGHT 1999 BY:
LEE SURVEYING & MAPPING CO., INC.
117 North Madriver Street
BELLEFONTAINE, OHIO 43311
(937) 593-7335

2 WORKING DAYS
BEFORE YOU DIG
CALL TOLL FREE 800-362-2764
OHIO UTILITIES PROTECTION SERVICE.

9289 1P