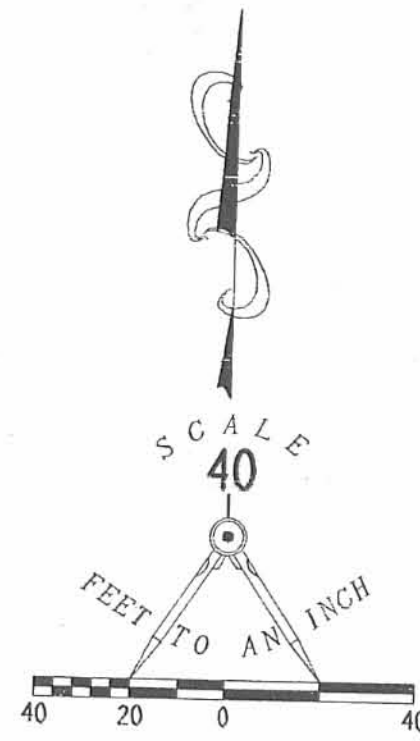
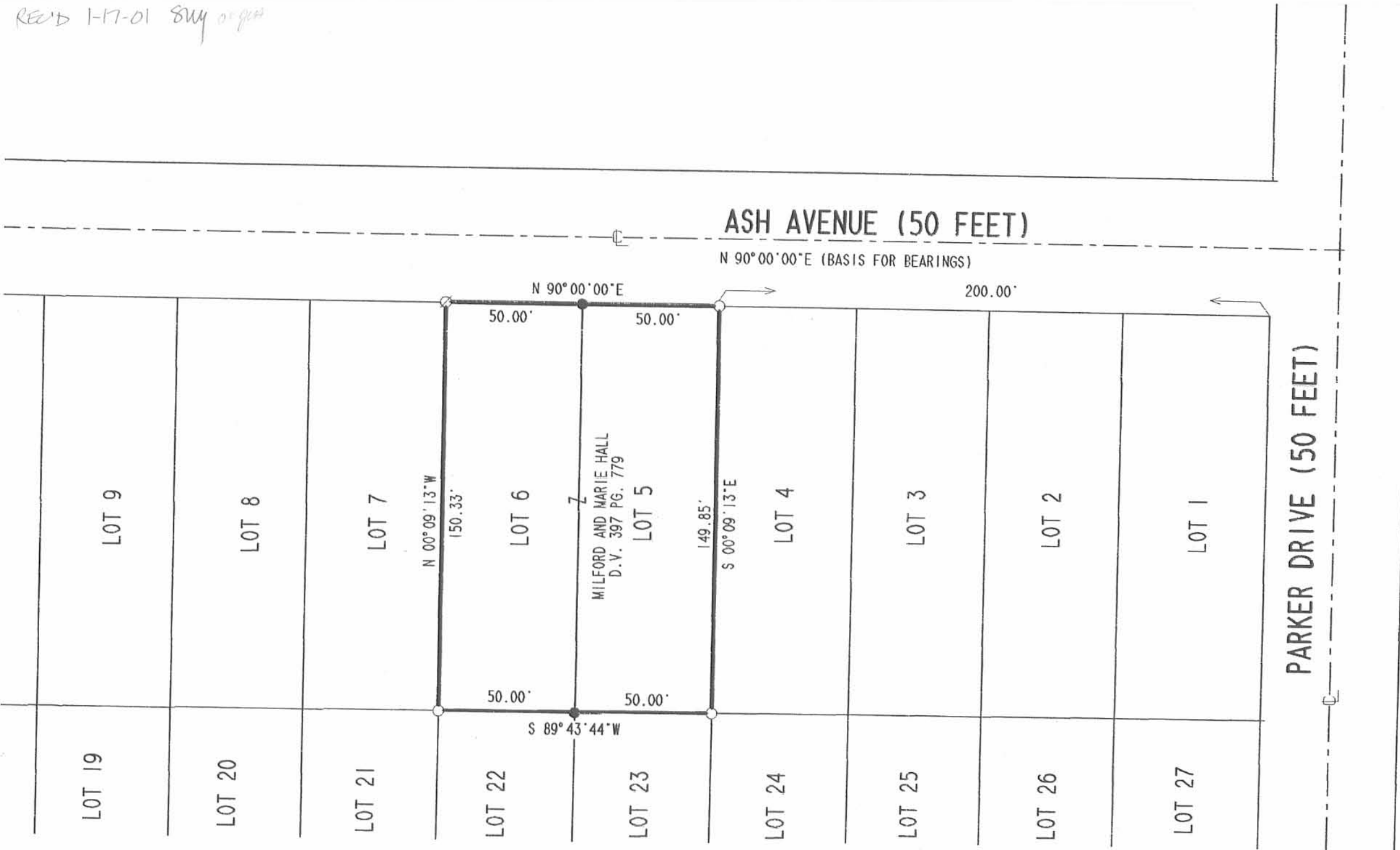


REC'D 1-17-01 SURV 01908



- LEGEND
- 5/8" IRON ROD SET
 - 3/4" IRON PIPE FOUND
 - ⊗ 1/2" IRON PIPE FOUND

2 WORKING DAYS
BEFORE YOU DIG
CALL TOLL FREE **800-362-2764**
OHIO UTILITIES PROTECTION SERVICE.

INDEXED ON MAP
9350 1P

RETRACEMENT SURVEY OF
MILFORD HALL AND MARIE HALL
ORIGINAL LOTS 5 AND 6
INDIAN LAKESHORES ALLOTMENT
DEED VOLUME 397 PAGE 779
RICHLAND TOWNSHIP
LOGAN COUNTY, OHIO



SURVEYED BY:
[Signature]
JEFFREY I. LEE
PROFESSIONAL SURVEYOR 6359
JANUARY 16, 2001

COPYRIGHT 2001 BY:
LEE SURVEYING & MAPPING CO., INC.
117 North Madriver Street
BELLEFONTAINE, OHIO 43311
(937) 593-7335

D 394 SPOFFORD L-3082-3

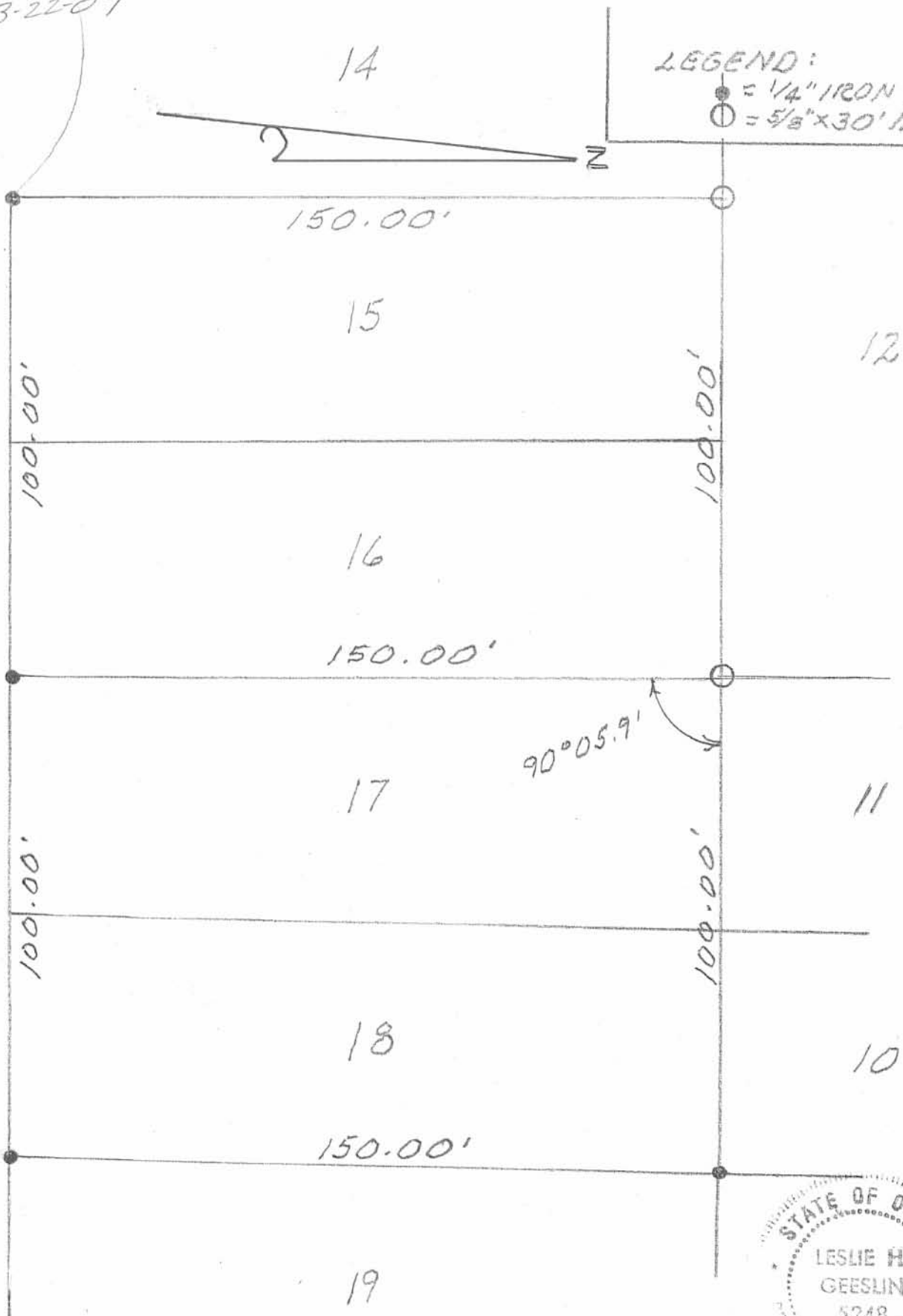
PCD 3-22-07

ELM AVE. (50')

ELM

LEGEND:

- = 1/4" IRON BAR FD
- = 5/8" x 30' IRON BAR SET



INDEXED ON MAP
9358 ZP

SURVEY OF LOTS 15-16-17-18 OF
 INDIAN LAKE SHORES ALOT. NO 1,
 V.M.S. 13393, RICHLAND TWP., LOGAN
 CO., OHIO FOR JOYCE JOHNSON.
 MARCH 20, 2007
 SCALE: 1"=30'

Leslie H. Geeslin
 LESLIE H. GEESLIN
 RUSHsylvania, OHIO
 PH 937-468-7265