

FB 713

T.R. 100
McArthur - Rickland Twp.
Logan Co., Ohio

0+21.03 - P.I. - Fd. R.R. Spike
reported to be over stone
@ V.M.S. corner (R-6116). -
Spike \approx 4" deep.
 $0^{\circ} 30' - 49" \text{ Rt.}$

0+01.03 - Intersection $\&$ T.R. 100
w/ S.R. 117 S. - Nothing found
or set.

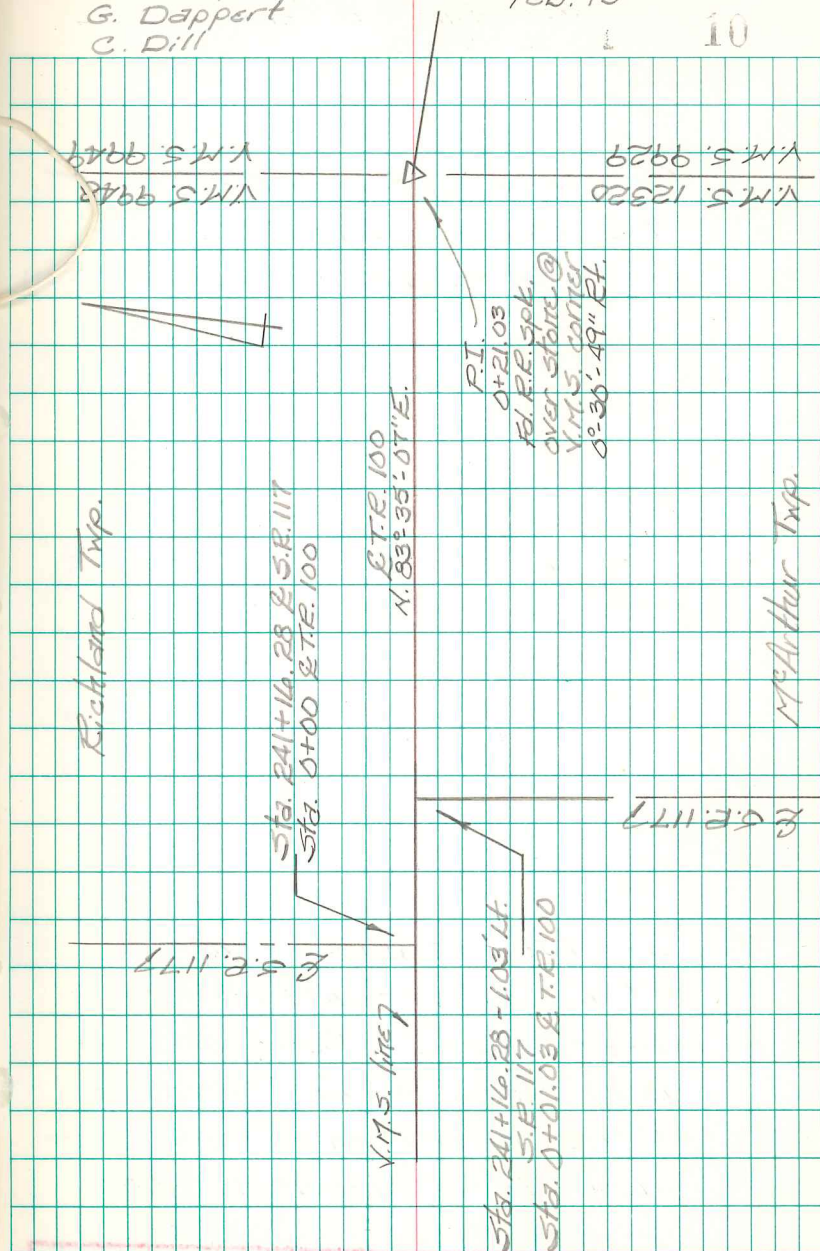
0+00 - Intersection $\&$ T.R. 100 w/
S.R. 117 N. - Nothing found or
set here - I created these
points using John Magoto's
1977 notes of this intersection
(R-6116). - Magoto shows
this as T.R. 100 sta. 25+00.00.

INDEXED ON MAP
9705

B. Simmons
G. Dappert
C. Dill

Feb. 13

10



INDEXED ON MAP
9705

FB 713

T.R. 100
McArthur - Richland Twp.
Logan Co., Ohio

2+51.45 - P.O.T. - Fd. mag nail -
N.E. corner 0.49 acre tract -
Ref: 2003 Lee Survey (R-8731).

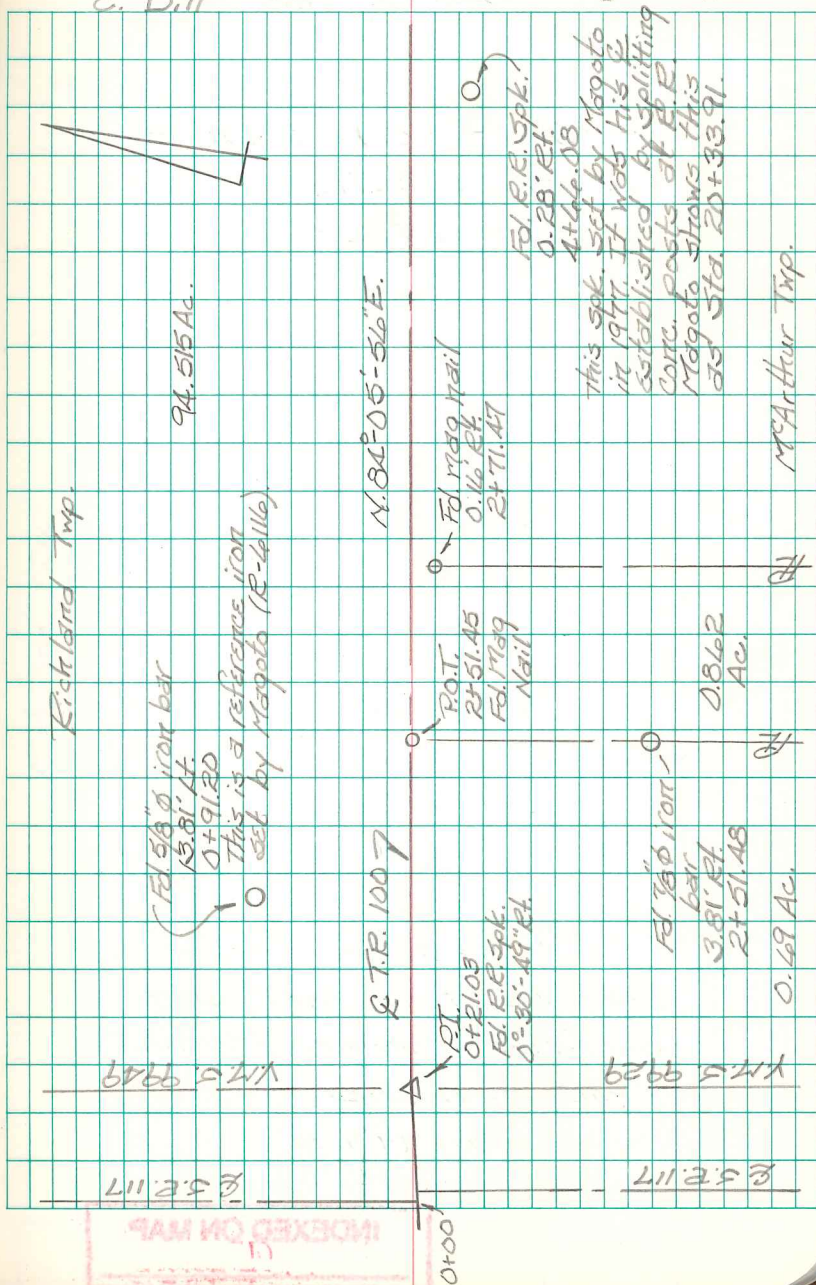
0+21.03 - P.I. - Fd. R.R. Spike
reported to be over stone
@ V.M.S. corner (R-6116).
Spike \approx 4" deep.
0°-30'-49" Rt.

0+00 - Intersection E.T.R. 100 w/ S.R.
117 N. - Nothing found or set
here - I created these points
using John Magoto's 1977 notes
of this intersection (R-6116).
Magoto shows this as T.R. 100
Sta. 25+00.00.

INDEXED ON MAP
9705

B. Simmons
G. Dappert
C. Dill

Feb. 13



FB 713

T.R. 100
 McArthur - Richland Twp.
 Logan Co., Ohio

30+91.77 - P.I. - Fd. 1/2" diameter
 iron bar - N.W. corner 21.45
 Ac. tract - Ref: 1964 Wright
 survey (R-3472).
 0°-11'-27" Rt.

Note: This is a two pole road
 R/W = 33'
 (Road Record 3, pgs. 64 to 75)

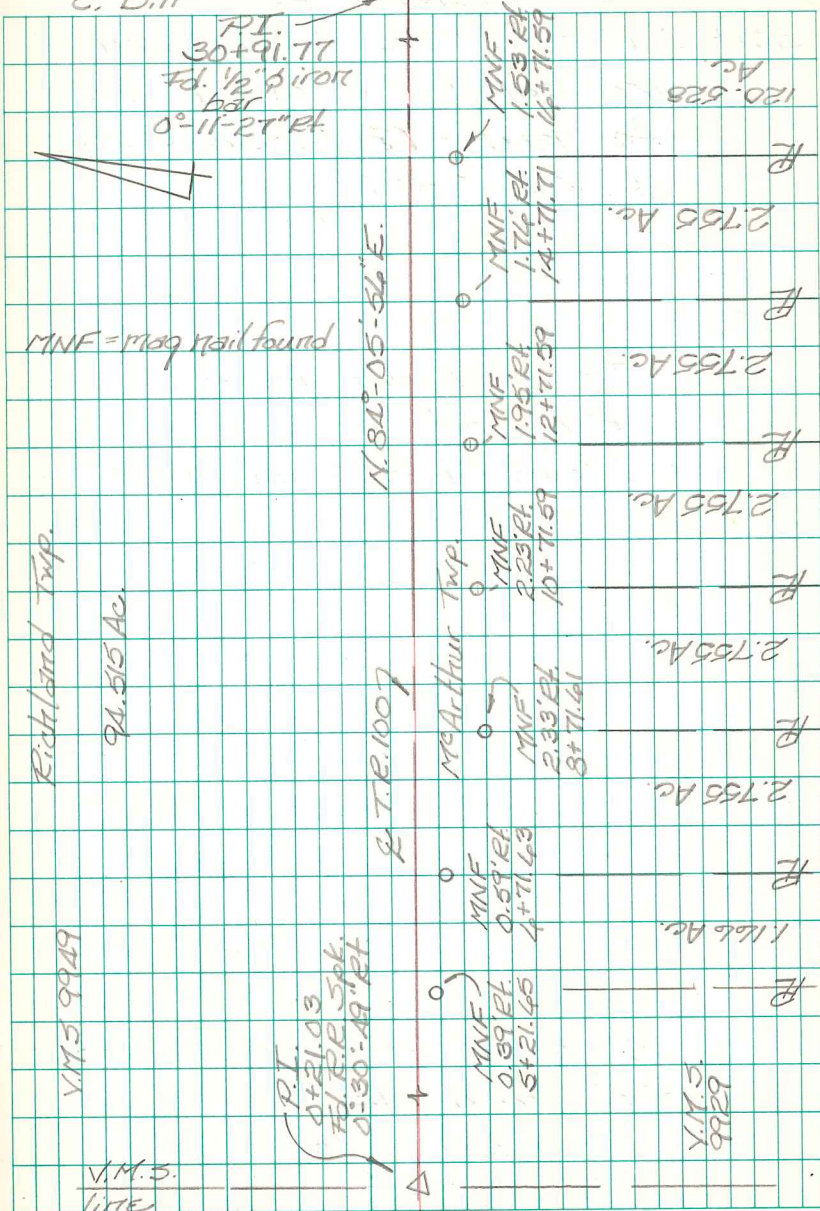
0+21.03 - P.I. - Fd. R.R. Spike
 reported to be over stone
 @ Y.M.S. corner (R-6116).
 Spike ≈ 4" deep.
 0°-36'-49" Rt.

INDEXED ON MAP
 9705

B. Simmons
 G. Dappert
 C. Dill

Feb. 2013

R 12



INDEXED ON MAP

FB 713

T.R. 100
McArthur - Richland Twp.
Logan Co., Ohio

45+12.95 - P.I. - Fd. 1 1/2" dia. iron
bar (axil?) in monument box.
Intersection T.R. 100 w/ C.R. 39 -
Ref: F.B.K. # 579, pg. 17

Note: J. Magoto split the two
concrete posts found @ the
R.R. to establish the \angle of
T.R. 100 in his 1977 survey.
I honored F. Wright's 1964
survey to establish \angle T.R. 100.

30+91.77 - P.I. - Fd. 1/2" diameter
iron bar - N.W. corner 21.65
Ac. tract - Ref: 1964 Wright
Survey (R-3672).
 $0^{\circ}11'27''$ Rt.

29+89.27 - P.O.T. - Fd. Mag nail -
S.E. corner 94.515 Ac.
tract - Ref: 2001 Edwards
Survey (R-9373).

INDEXED ON MAP
9705

B. Simmonds
G. Dappert
C. Dill

Feb. 2013

