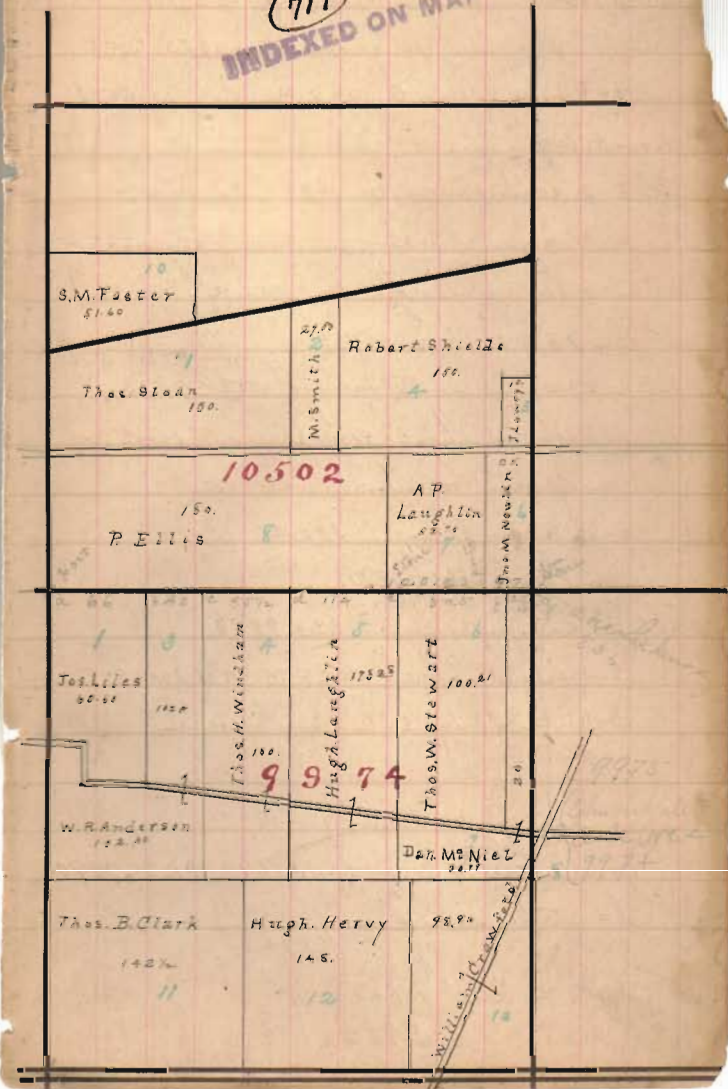
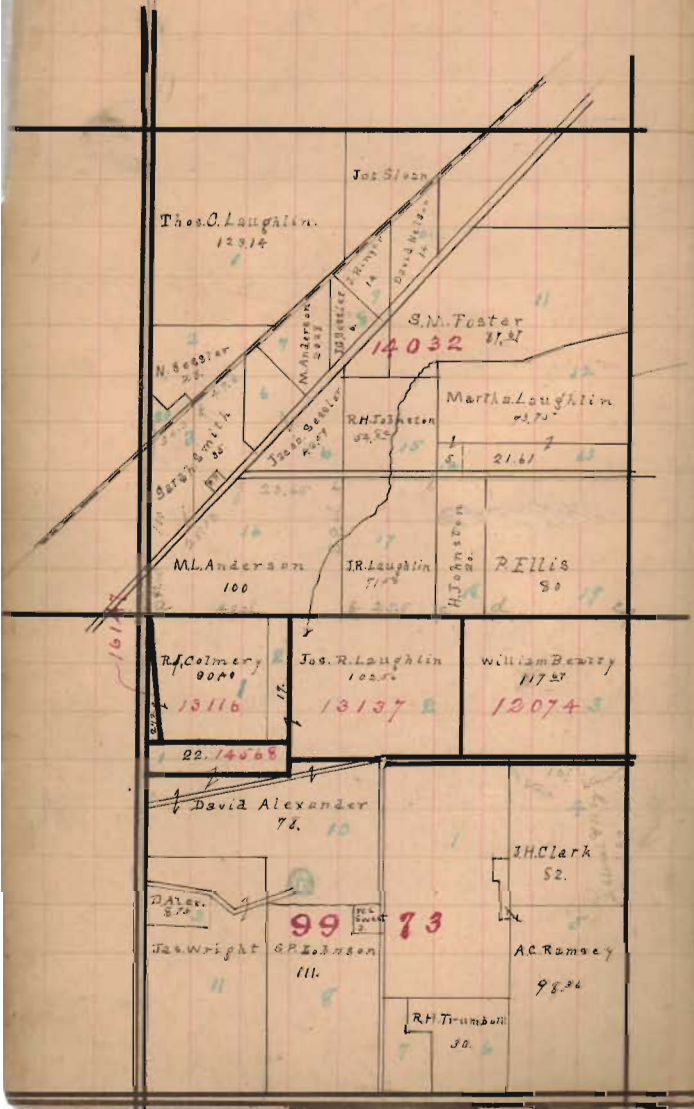


162
16276

Richland and Rushcreek Twp.

719

INDEXED ON MAP



9990. j = small ash & 2 trees 322 9997
 g = 2 trees & sugar & dogwood 322 9998
 f = elm & 2 trees 322 9999

Book Surv. page 180. March & July 1820

9994 f = 2 trees & ash 322 9995, k = 2 trees
 l = 2 trees & sugar & 2 trees & sugar
 m = 2 trees & sugar 322 9996

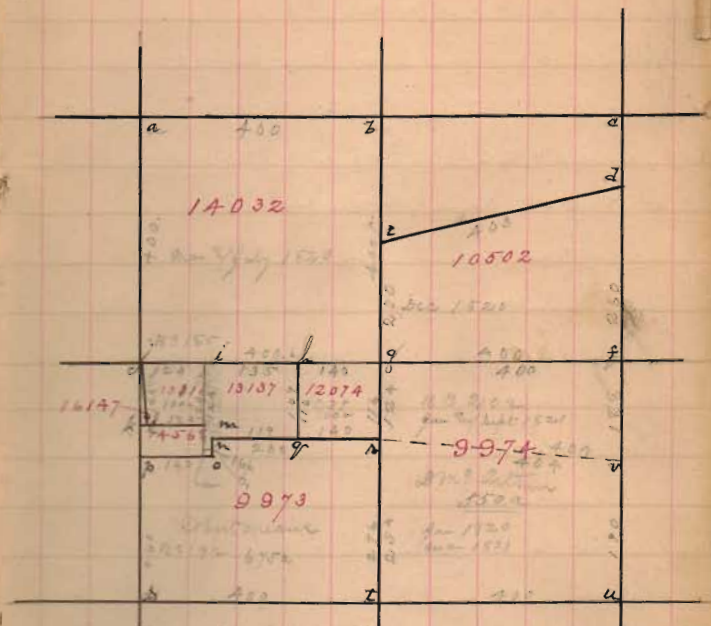
Jan 1820 Mar 1821

9997 j = 2 trees & sugar & maple 322 9998
 k = 2 trees & sugar & 2 trees & sugar
 l = 2 trees & sugar & 2 trees & sugar
 m = 2 trees & sugar 322 9999
 Jan 1821, Sept 1821

9992 g = 2 trees & sugar & dogwood 322 9993
 f = 2 trees & sugar & ash 322 9994 & 322 9995
 d = 2 trees & sugar & 2 trees & sugar
 Dec 1820 Book Surv. page 221

9994 l = 2 trees & sugar & dogwood 322 9995
 g = 2 trees & sugar & dogwood 322 9996 & 322 9997
 h = 2 trees in new house 9998
 i = 2 trees in new house 9999

John H. Reid 100 a
 March & Dec 1824



9993 k = 2 trees & sugar & maple 322 9994
 l = 2 trees & sugar & dogwood 322 9995
 m = 2 trees & sugar & dogwood 322 9996
 n = 2 trees & sugar & dogwood 322 9997
 o = 2 trees & sugar & dogwood 322 9998
 p = 2 trees & sugar & dogwood 322 9999
 Jan 1820 Mar 1821

9994 j = 2 trees & sugar & maple 322 9995
 k = 2 trees & sugar & maple 322 9996
 l = 2 trees & sugar & maple 322 9997
 m = 2 trees & sugar & maple 322 9998
 n = 2 trees & sugar & maple 322 9999
 Jan 1820 Mar 1821

13134 k = 2 trees & sugar & dogwood 322 9995
 l = 2 trees & sugar & dogwood 322 9996
 m = 2 trees & sugar & dogwood 322 9997
 n = 2 trees & sugar & dogwood 322 9998
 o = 2 trees & sugar & dogwood 322 9999
 Jan 1820 Mar 1821

14052

From Taylor land book p. 118

Sub. No. a stem 2112 Aug 1890 a 21100

7 = Aug 1890 2112 18; Aug 1890 2112 27; Aug 1890 2112 23

9 = Aug 1890 2112 122; Aug 1890 2112 24

Sub. 14, 0 = 2 Bush 1890 & 1891 land

Ch. 2 = 140 p 26.50 ch

June 15 1891, 1892 to 1893 1100 p 150. June 67

Aug. 11. 0 = R. D. O. 324. 1890 1891 p 2 bush 1890

Danford Harrod

= 1890 1891 105 a with 8. 1891 Anderson, also 1891 95

= 1890 1891 140 p 2 1891

= 1890 1891 127 p 1891

3

10502

Barnett to Ellis 598 1/2 a 1891 p 150 June 67

Barne of 800 to Reg post 512 1/2 a 1891 24 1891 29 7A

= 1890 202 1/2 p 1891 1891 137 to post

= 1890 212 1/2 p 1891 1891 200. 1891 1891

1891 1891

= 1890 265 1/2 p 1891 1891 297

= 1890 205 1/2 p 1891

Ellis to A. C. Bradgins 520 1/2 a 1891 p 140 July 71-72

June 1891. Reg post - 312 1/2 a 1891 p 1891 1891

< - 330 1/2 a 1891 p 1891

= 1890 1891 120 a p 1891 1891

= with road 1891 1891 1891

* 3 1/2 a 1891 1891 1891

121074

7.11.1974
 9974
 9975
 9976
 9977
 9978
 9979
 9980
 9981
 9982
 9983
 9984
 9985
 9986
 9987
 9988
 9989
 9990
 9991
 9992
 9993
 9994
 9995
 9996
 9997
 9998
 9999

9974
 9975
 9976
 9977
 9978
 9979
 9980
 9981
 9982
 9983
 9984
 9985
 9986
 9987
 9988
 9989
 9990
 9991
 9992
 9993
 9994
 9995
 9996
 9997
 9998
 9999

9974
 9975
 9976
 9977
 9978
 9979
 9980
 9981
 9982
 9983
 9984
 9985
 9986
 9987
 9988
 9989
 9990
 9991
 9992
 9993
 9994
 9995
 9996
 9997
 9998
 9999

9974
 9975
 9976
 9977
 9978
 9979
 9980
 9981
 9982
 9983
 9984
 9985
 9986
 9987
 9988
 9989
 9990
 9991
 9992
 9993
 9994
 9995
 9996
 9997
 9998
 9999

9974
 9975
 9976
 9977
 9978
 9979
 9980
 9981
 9982
 9983
 9984
 9985
 9986
 9987
 9988
 9989
 9990
 9991
 9992
 9993
 9994
 9995
 9996
 9997
 9998
 9999

9974
 9975
 9976
 9977
 9978
 9979
 9980
 9981
 9982
 9983
 9984
 9985
 9986
 9987
 9988
 9989
 9990
 9991
 9992
 9993
 9994
 9995
 9996
 9997
 9998
 9999

9974
 9975
 9976
 9977
 9978
 9979
 9980
 9981
 9982
 9983
 9984
 9985
 9986
 9987
 9988
 9989
 9990
 9991
 9992
 9993
 9994
 9995
 9996
 9997
 9998
 9999

9974
 9975
 9976
 9977
 9978
 9979
 9980
 9981
 9982
 9983
 9984
 9985
 9986
 9987
 9988
 9989
 9990
 9991
 9992
 9993
 9994
 9995
 9996
 9997
 9998
 9999

9974
 9975
 9976
 9977
 9978
 9979
 9980
 9981
 9982
 9983
 9984
 9985
 9986
 9987
 9988
 9989
 9990
 9991
 9992
 9993
 9994
 9995
 9996
 9997
 9998
 9999

9974
 9975
 9976
 9977
 9978
 9979
 9980
 9981
 9982
 9983
 9984
 9985
 9986
 9987
 9988
 9989
 9990
 9991
 9992
 9993
 9994
 9995
 9996
 9997
 9998
 9999

9974
 9975
 9976
 9977
 9978
 9979
 9980
 9981
 9982
 9983
 9984
 9985
 9986
 9987
 9988
 9989
 9990
 9991
 9992
 9993
 9994
 9995
 9996
 9997
 9998
 9999

9974

Vol. C. Davis Rec. p. 96-1074, 9974
 9974 like Bush tree
 a = 9974
 c = 9974
 e = 9974
 f = 9974
 g = 9974

14032. Smith

14032

C



Survey of M.A. Smith
 - Beg at E. line 10° 51' 21.47 & line 10° 51' 21.47
 - Ex. 1/2 of 700 ft. at end of R.R.
 - with R.R. 30° 30' 21.47 to station
 - 510 ft. 21.47 and 1/2 station
 - (Circuit 1/2) to by way 1000 ft.
 also by way 1000 ft. to the station
 - with road 1000 ft. 21.47
 - 1000 ft. 21.47 to the line in a line tract
 - 510 ft. 21.47 to by way 1000 ft.
 also by way 1000 ft. to the station
 road end of 1000 ft. = 21.47 - 1000 ft. 21.47
 also 1/2 station
 - 510 ft. 21.47 and 1/2 station
 with R.R. 30° 30' 21.47 to station
 510 ft. 21.47 to by way 1000 ft.