

Forsythe Survey.

Line A. West line of piece run

with fence 18ft offset

(S 63° E)

N 4 3/4 W

at 10 ch set back to 16ft

at 20 set to 6ft to east

→ (78 ch 31 links) Missed

50.31 corner post 15 links East.

36 link from

Line B North line

stone at 22.24

S 85 1/2 E 33.13 1/2

29 links from
Tree

Line C. S 6° E

set stake at 54 ch.

(N 8° W)

50.45 ch.

Missed post to East. 17 links.

33 links South of post.

Line D N 85 1/4 E

32.59 links

1068

INDEXED ON MAP

Aug 23, 1921

55 47

A W Elliott

John Forsythe

Andy George.

W D Montgomery

East End	25	-	7.8	Links
" "	20	-	6.2	
iron pile S.E. cor			9.3	
granit stone S.W. 42 links				22.24
" "				13.26
Bridge East 114				35.49

			48.31
			7.8
			11.725
			12.2
			13.0
			6.2
			10.100
			9.0
			4.0
			3.0
			16.750
			10.0
			2.0

Mrs Alice Forsythe

Rush

Mrs Eva Forsythe

Beth Carter O.

10 ch slake bearing S 82° W
 13 ch to slake set to north 17 ch

32.83 ch. 44 links from
 pond to S

$8\frac{1}{2}$
 32.91 $\frac{1}{2}$ ch

Line North 3.50 ch.

Line northeast east end

N 70° E 2.75 ch

588' - 21' 1000

32.91
 8 1/2
 32.83

22 717
 50 22
 34
 34
 737
 75

32.91

13

19.91

35

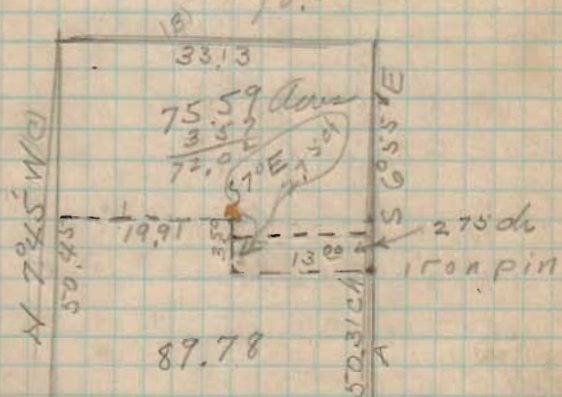
99.55

597.3

6968.5 acres

357.5

343
 10.5



S 89° W 32.54

iron pipe down