

Road 118  
Rushersck Twp.  
Pugh road

45' Sta To Sta  
40' Sta To Sta

stakes Placed  $22\frac{1}{2}$ ' from  $\&$  for 45' Roads

Stakes set 1-3-5-7-9 etc.

Rushsylvania Pike (Road No. 9 to  
Ansley Road (Road No. 20) 45' Road  
Remainder of road 40'  
Pugh road Commissioners Journal  
R Page 209 May-1916

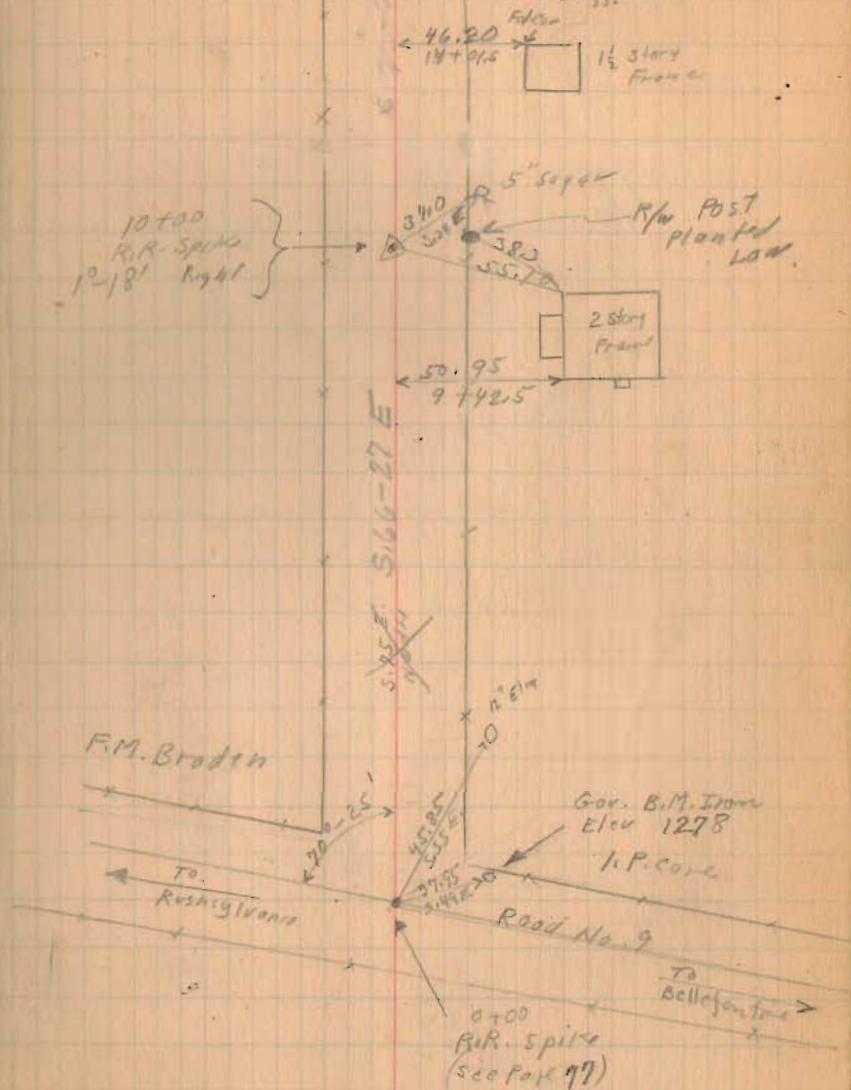
FB 560

1378  
INDEXED ON MAP

May-17-1932

Fine Day  
W/ght  
M. Exposed  
Duff.

57



Road 118

1+00  
10+00  
17+00  
28+00  
31+00  
35+00

Monuments M. K. Smith  
Set. Duff  
May-24-1932

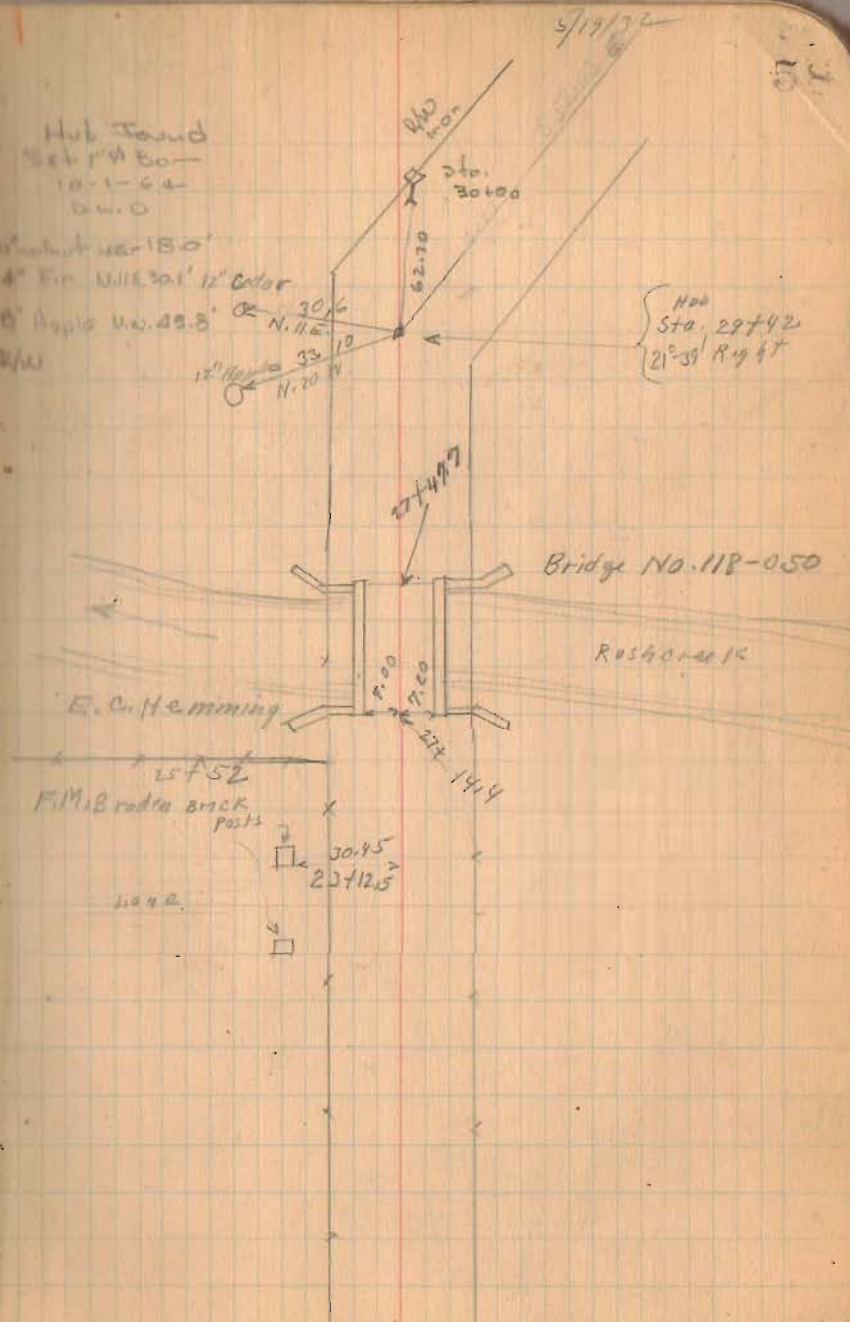
FB 560

1378  
INDEXED ON MAP

Hub found  
Set by W. B. O.  
10-1-64  
D.W.O.

Hub found  
24° Eir. N. 112° 30' 12" Color  
18° Apple W. 48.8'

21 W



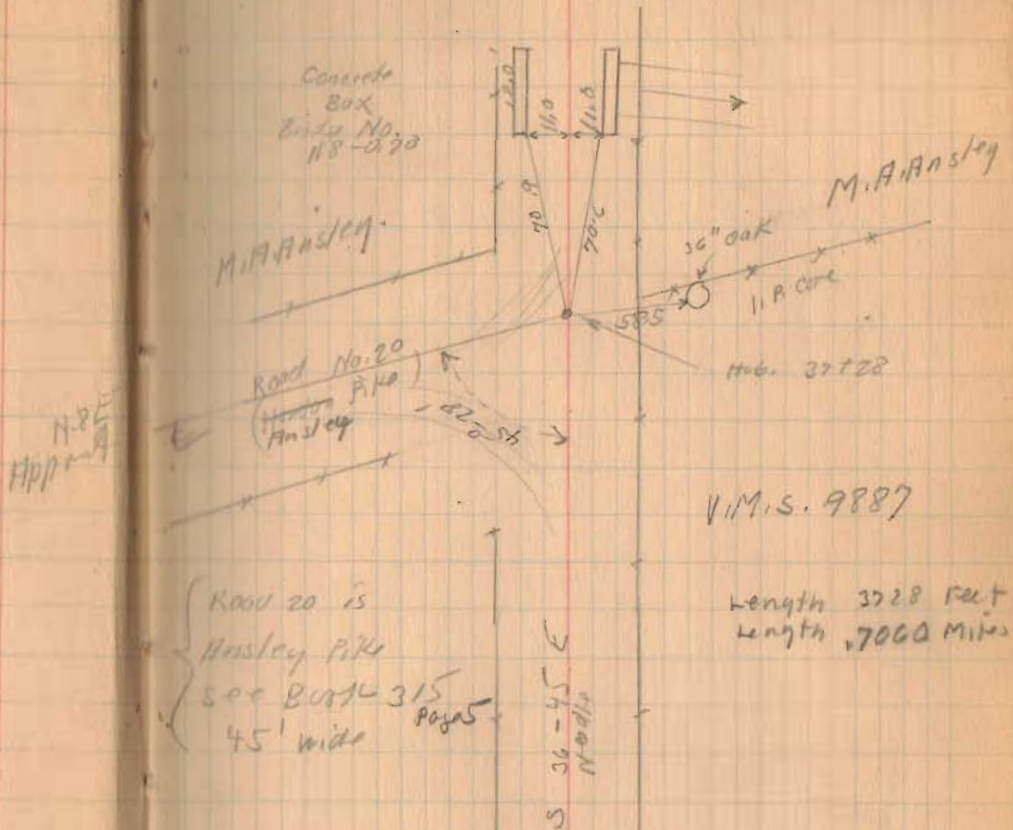


Road No. 118

5/19/32

59

Continued in Book 314 Page-51



Road 20 is  
Hosley Pike  
see Book 315  
45' wide pages

V.M.S. 9887

Length 3728 feet  
Length 7000 Miles

FB 560

1378  
INDEXED ON MAP

CONTINUED FROM BOOK 560 P. 59

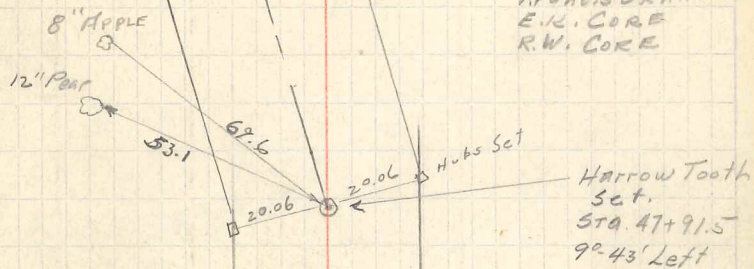
$$\begin{array}{r} 28 \\ 46 \\ \hline 74 \\ 28 \\ 62 \\ \hline 3797 \end{array}$$

FB 314

1370

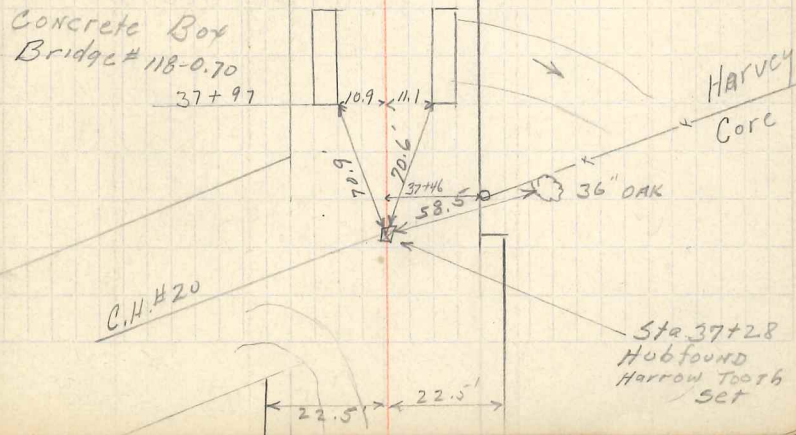
5-25-1945

E. K. CORE  
G. W. WILGUS  
FRANCIS ORRHOOD  
E. K. CORE  
R. W. CORE



Concrete Box  
Bridge # 118-0.70

37+97



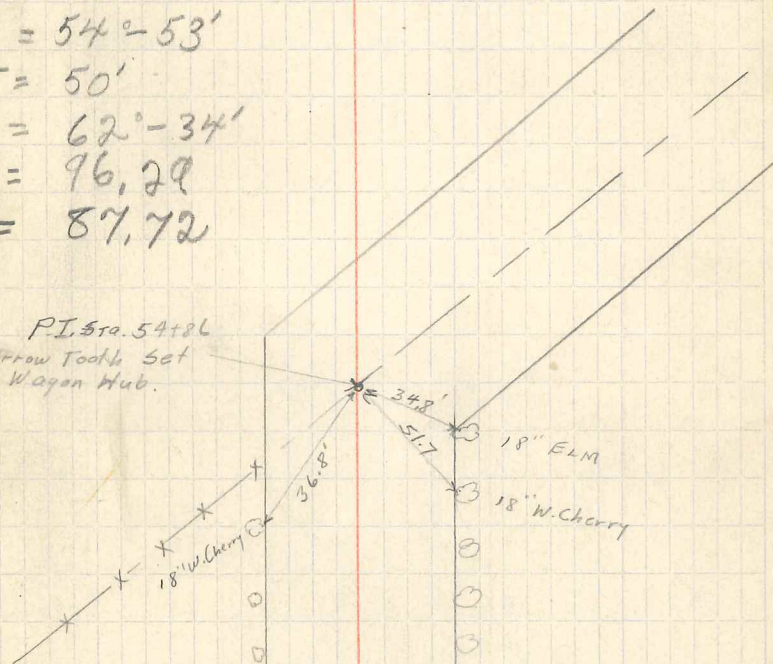


54+86

$$\begin{aligned}
 P.C. &= 54+36 \\
 P.I. &= 54+86 \\
 P.T. &= 55+23.72
 \end{aligned}$$

$$\begin{aligned}
 \Delta &= 54^{\circ}-53' \\
 T &= 50' \\
 D &= 62^{\circ}-34' \\
 R &= 96.29 \\
 L &= 87.72
 \end{aligned}$$

P.I. Sta. 54+86  
Harrow Tooth Set  
in Wagon Hub.



1378

FB 314

PI 61+16.2

55. set. 56  
58

P.C. 60+56.2

P.I. 61+16.2

P.T. 61+35.9

$$\Delta = 89^{\circ} 58'$$

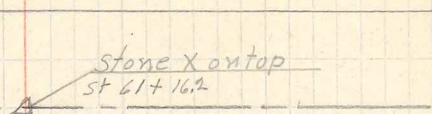
$$T = 60'$$

$$D = 112^{\circ} 50'$$

$$R = 60'$$

$$L = 79.74$$

Stone X on top  
ST 61+16.2



LANE APP. 456+35

FB 314

1370