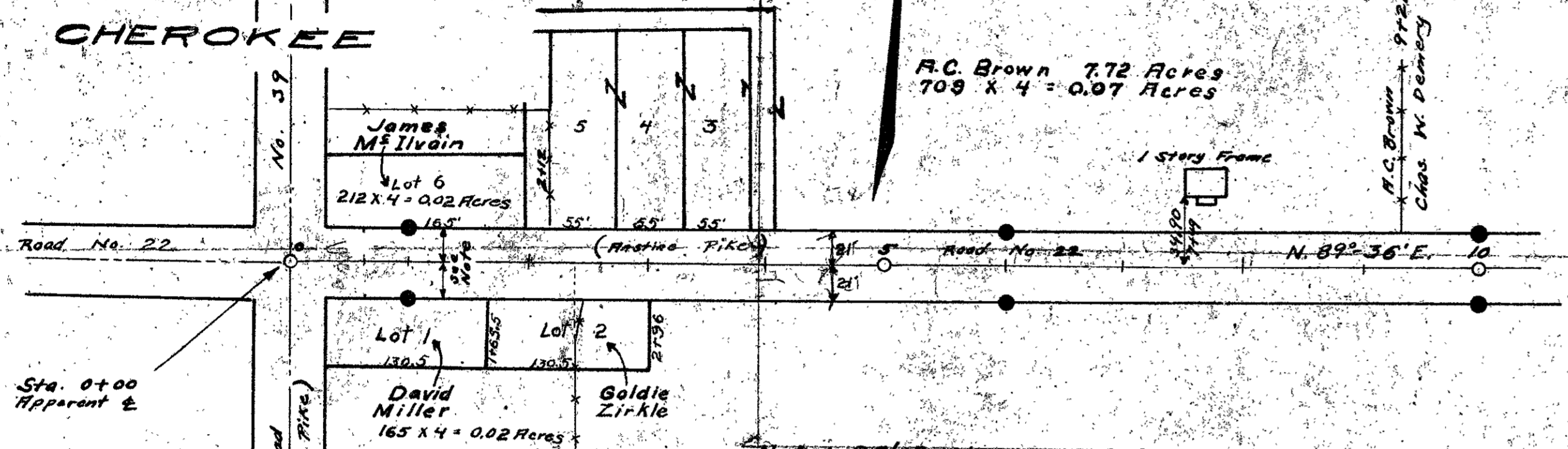


CHEROKEE



Note: 60' Road length of Cherokee Lots

Sta. 0+00 to Sta. 124+43  
 Anstine Pike 11801, 42' wide  
 See Pike Record H, Page 112  
 See Free Turnpike Record 3, Page 586

Sta. 124+43 to Sta. 212+45.5  
 Monuments set 50'

Sta. 212+45.5 to Sta. 222+83  
 Old S.H. 228  
 60' wide

Sta. 222+83 to Sta. 233+78  
 Monuments set 50'

Sta. 233+78 to Sta. 368+83  
 Harper, Rushsylvania Pike (1882) 50' wide  
 See Free Turnpike Record 6, Page 583

Field notes Logan County Surveyors  
 Book No. 338 Pages 67 and 72  
 " " Pages 71 to 73

From Sta. 0+00 to Sta. 124+43 to obtain 50' Right of Way  
 Commissioners View June 22, 1936  
 Commissioners Hearing June 29, 1936  
 Commissioners Hearing on Damages July 23, 1936

ROAD 22

Charles Demory 64.50 Acres  
 Sta. 233+78 to 20+11, 1090 x 4 = 0.10 Acres  
 Sta. 43+70 to 49+45 = 605 x 4 = 0.08 Acres

Goldie Zirkle 55.60 Acres  
 1123 1/2 x 4 = 0.10 Acres

Charles Demory 44 Acres  
 722 x 4 = 0.07 Acres

Harvey Nelson 110.51 Acres  
 Sta. 20+11 to 43+70 = 2329 x 4 = 0.21 Acres  
 Sta. 20+11 to 34+70 = 1459 x 4 = 0.13 Acres

Lester Milroy 105.40 Acres  
 Sta. 37+41 to 72+62 = 3521 x 4 = 0.32 Acres  
 Sta. 66+86 to 72+62 = 576 x 4 = 0.05 Acres

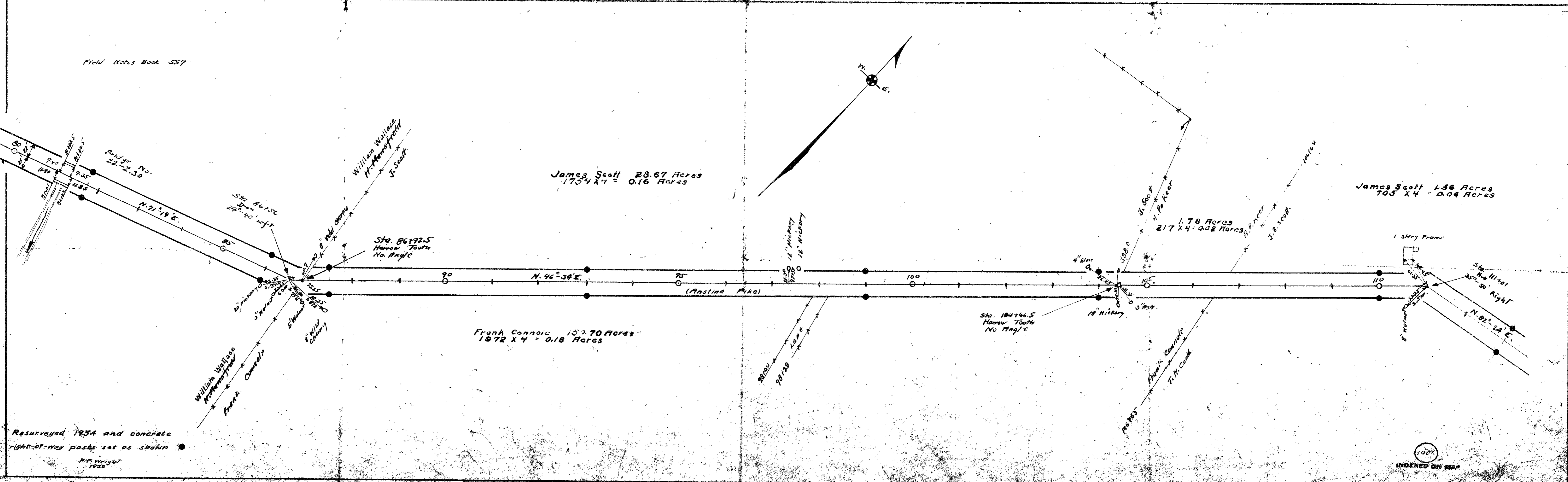
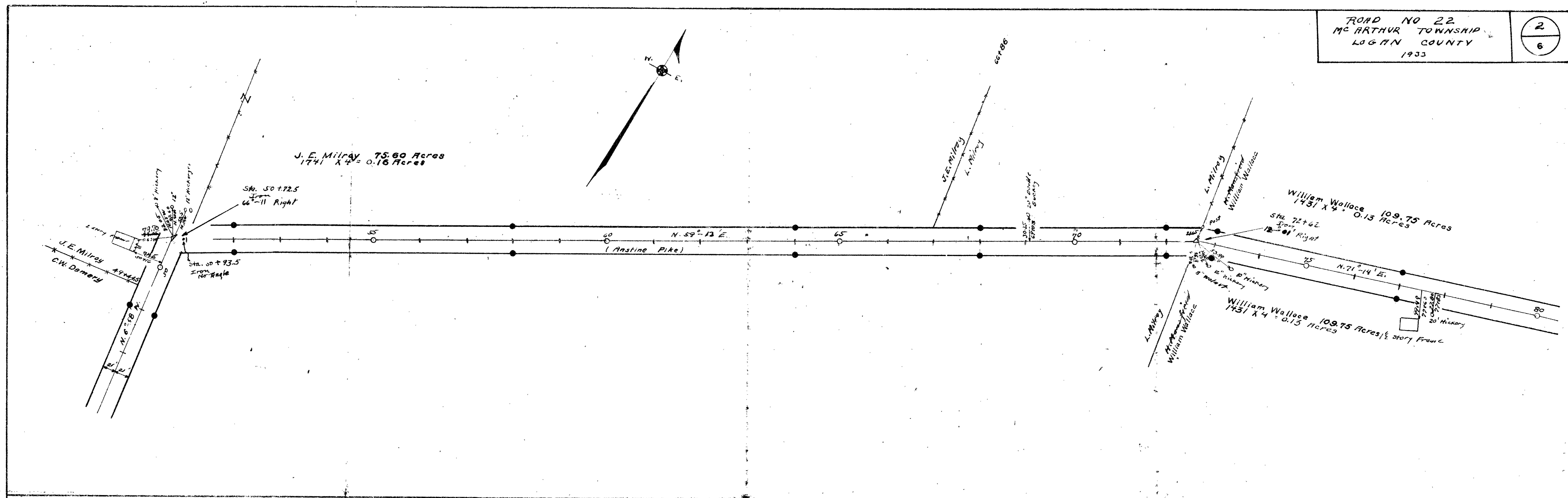
Robert Milroy 52 Acres  
 271 x 4 = 0.02 Acres

Resurveyed 1934 and concrete right-of-way posts set as shown

Drawn By  
 H. W. Waugh

X-22B

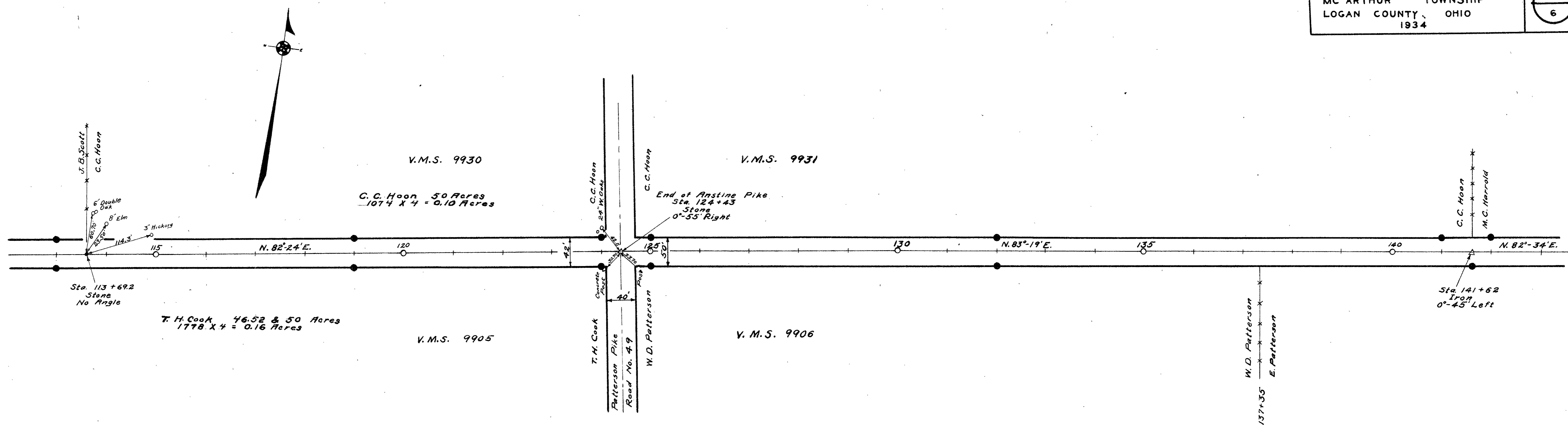




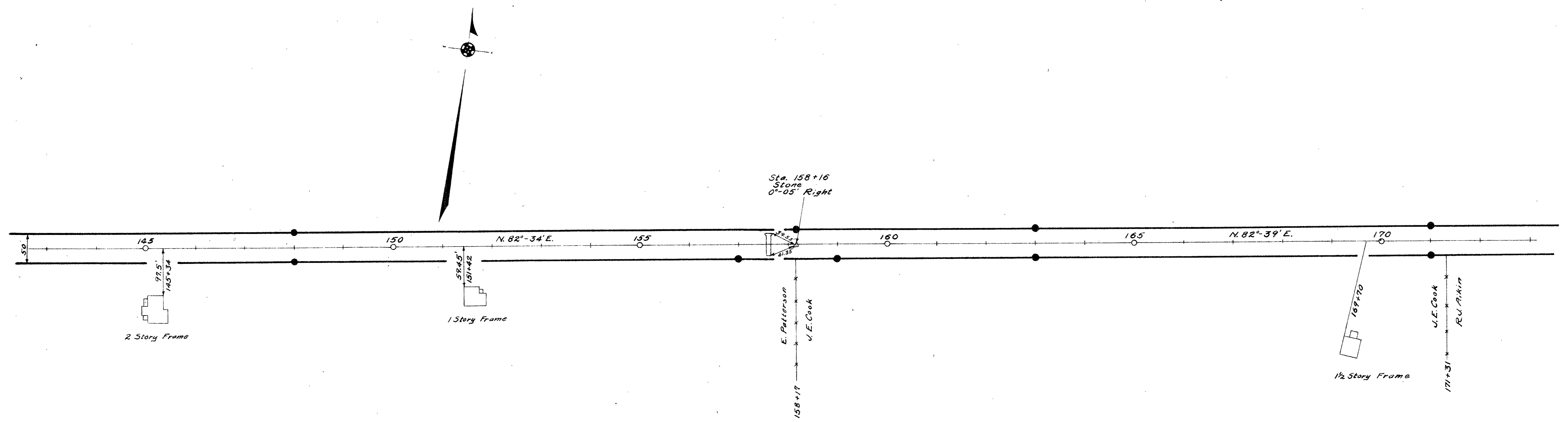
Field Notes Book 557

Resurveyed 1934 and concrete  
 right-of-way posts set as shown  
 R.R. Wright  
 1903

1400  
 INDEXED ON MAP

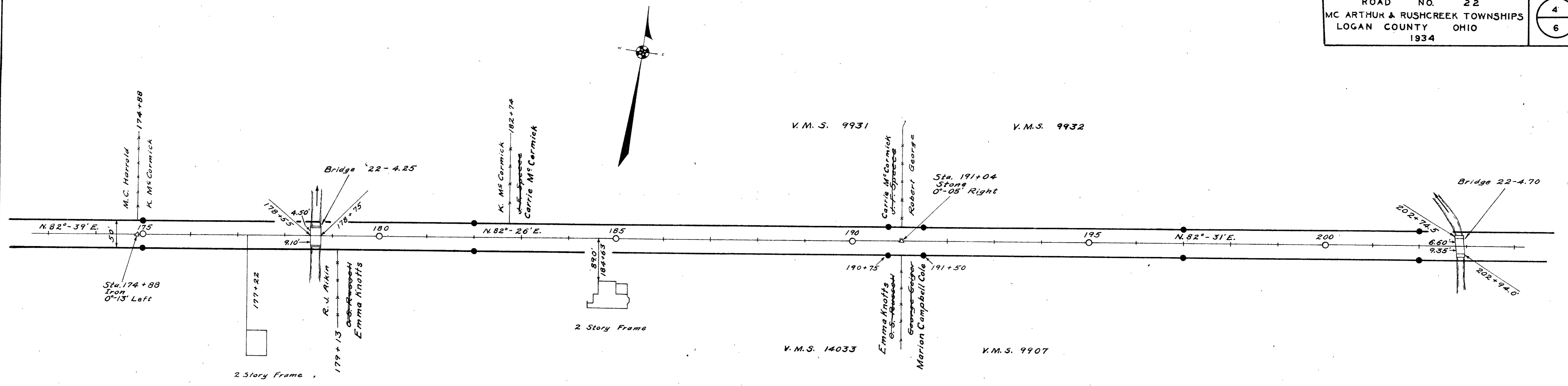


Concrete right-of-way posts set as shown ●  
 Field Notes Book 559

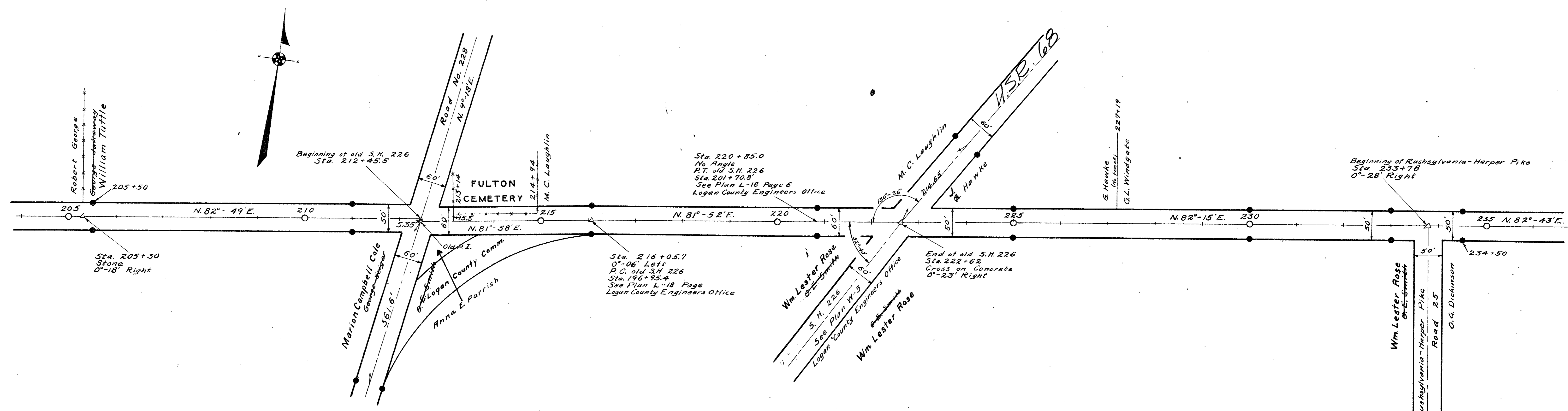


Surveyed By F.F. Wright  
 1934  
 Drawn By E.K. Clegg  
 1930

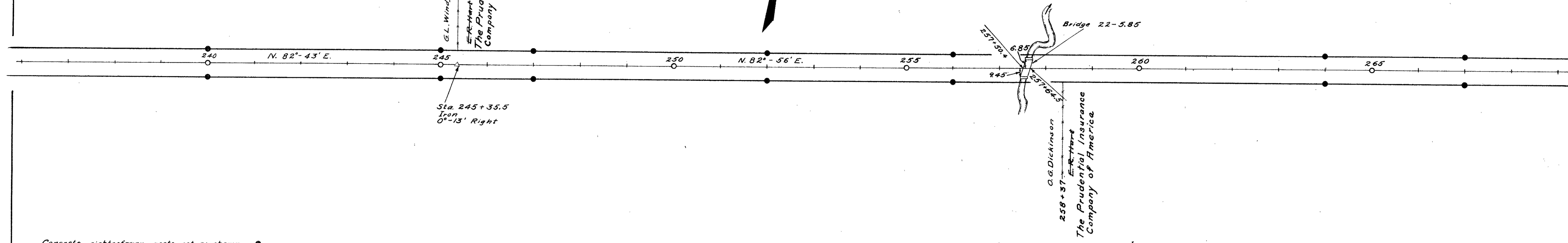
1409  
 INDEXED ON MAP



Concrete right-of-way posts set as shown ●  
 Field Notes Book 559  
 Logan County Engineers Office

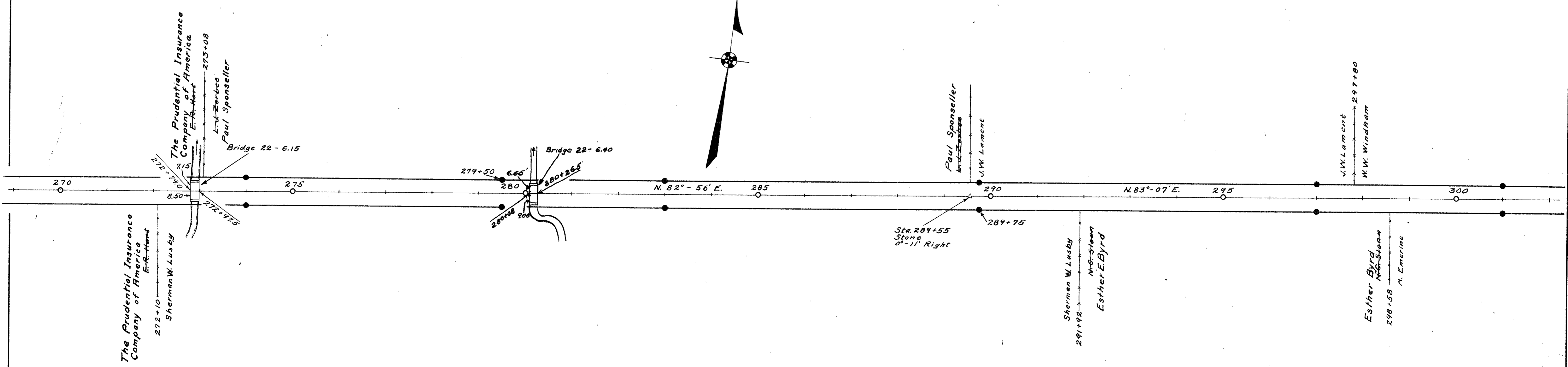
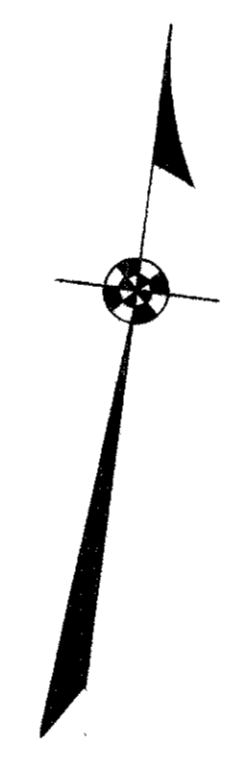


Surveyed By F.F. Wright  
 Feb. 1934  
 Drawn By E.K. Core  
 March 1936



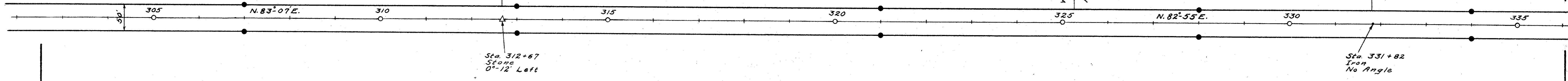
Concrete right-of-way posts set as shown ●

Field Notes Book 559  
 Logan County Engineers Office

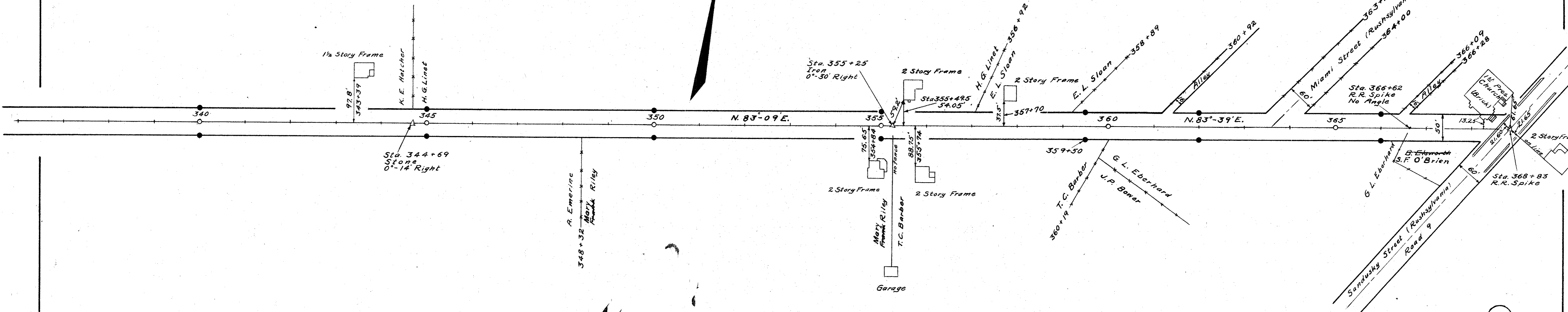
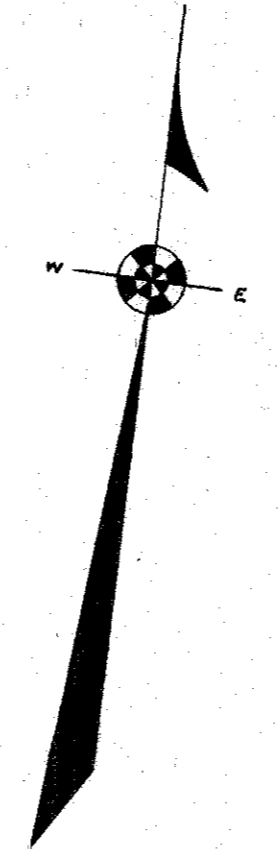


Surveyed By F.F. Wright  
 Feb. 1934  
 Drawn By E.K. Cox  
 March 1936





Concrete right-of-way posts set as shown ●  
Field Notes Book 559  
Logan County Engineers Office



Surveyed By F.F. Wright  
February - 1934  
Drawn By - E.M. Carr  
March - 1934

# LOCATION PLAN

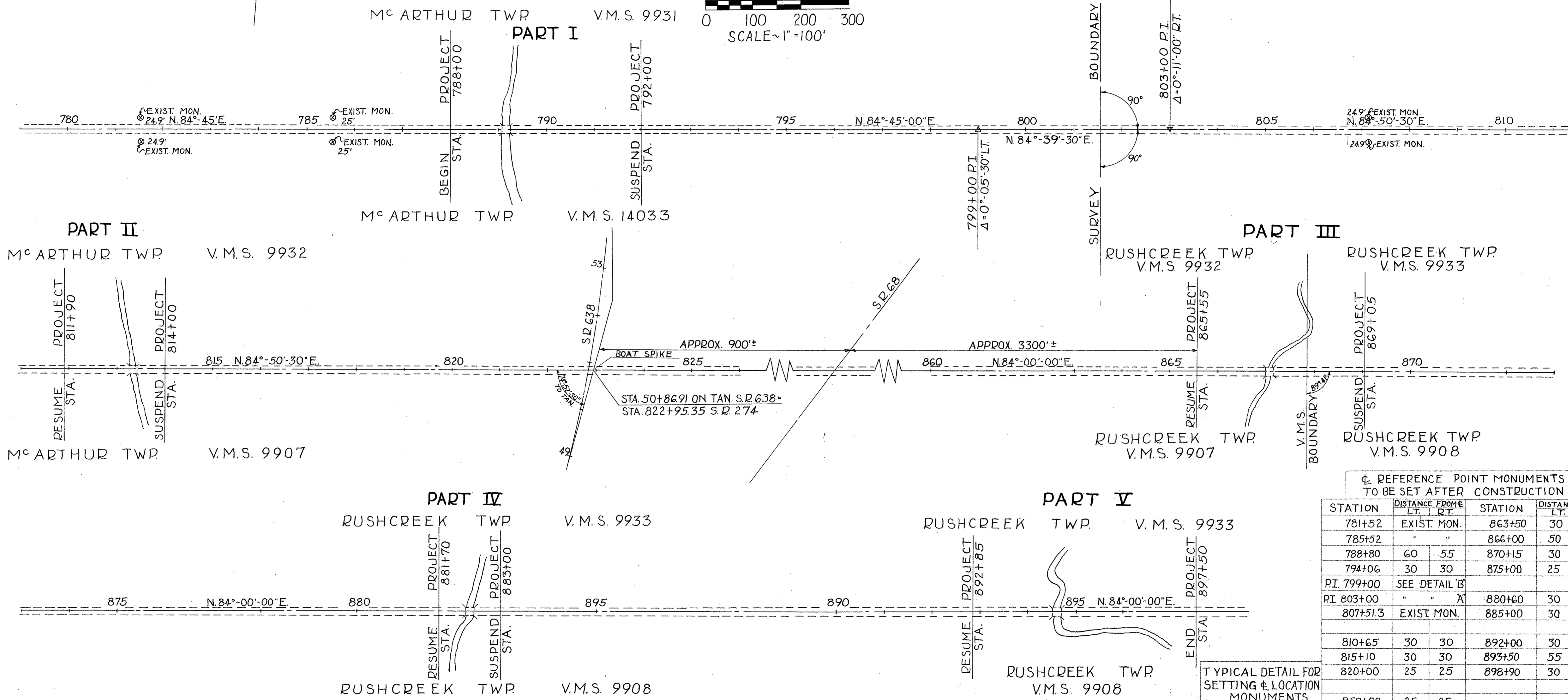
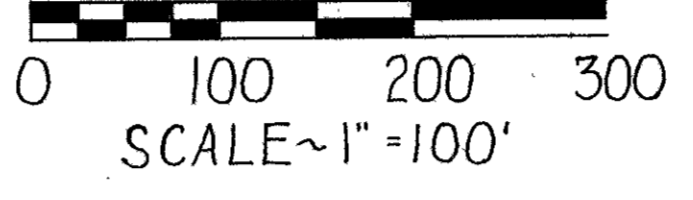
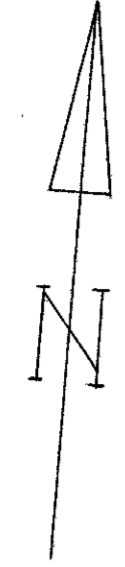
## STATE ROUTE 274

### LOGAN COUNTY

#### M<sup>c</sup>ARTHUR & RUSHCREEK TWP.

|                   |       |         |        |
|-------------------|-------|---------|--------|
| FED. RD. DIVISION | STATE | PROJECT | ①<br>1 |
| 2                 | OHIO  | 1958    |        |

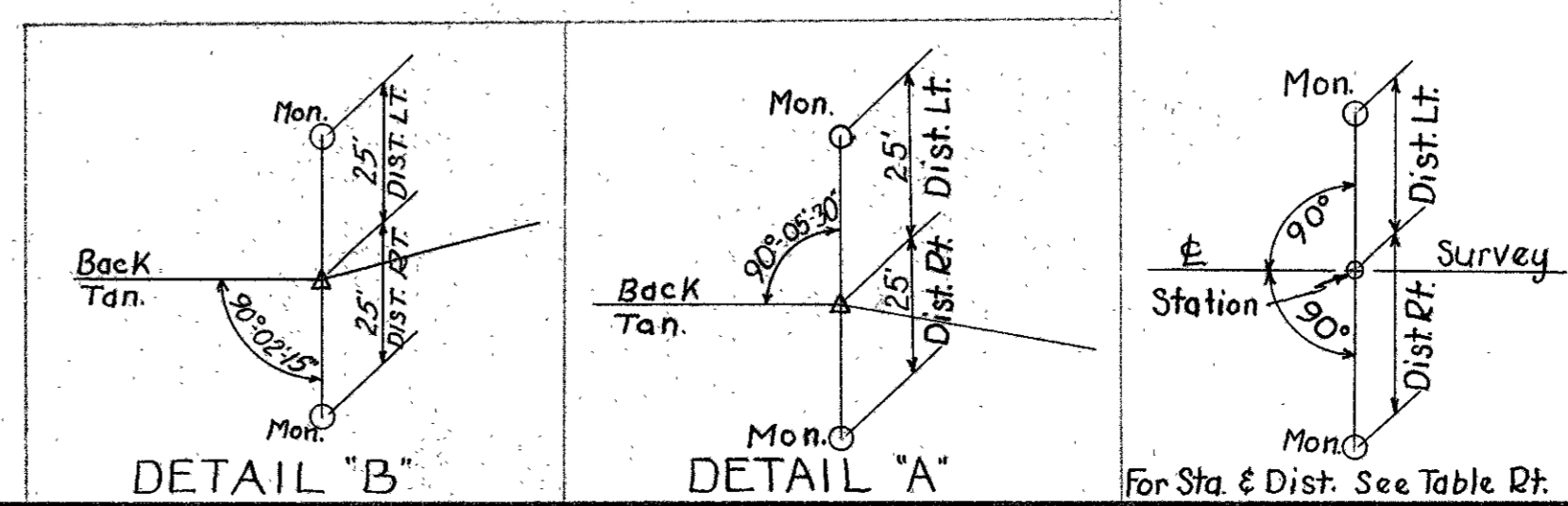
LOGAN COUNTY  
LOG. 274-(14.92-16.9) Structures



⊕ REFERENCE POINT MONUMENTS  
TO BE SET AFTER CONSTRUCTION

| STATION     | DISTANCE FROM  |             | STATION | DISTANCE FROM |     |
|-------------|----------------|-------------|---------|---------------|-----|
|             | LT.            | RT.         |         | LT.           | RT. |
| 781+52      |                | EXIST. MON. | 863+50  | 30            | 30  |
| 785+52      |                | "           | 866+00  | 50            | 50  |
| 788+80      | 60             | 55          | 870+15  | 30            | 30  |
| 794+06      | 30             | 30          | 875+00  | 25            | 25  |
| P.I. 799+00 | SEE DETAIL 'B' |             |         |               |     |
| P.I. 803+00 |                | "           | 880+60  | 30            | 30  |
| 807+51.3    |                | EXIST. MON. | 885+00  | 30            | 30  |
| 810+65      | 30             | 30          | 892+00  | 30            | 30  |
| 815+10      | 30             | 30          | 893+50  | 55            | 45  |
| 820+00      | 25             | 25          | 898+90  | 30            | 30  |
| 858+00      | 25             | 25          |         |               |     |

TYPICAL DETAIL FOR  
SETTING & LOCATION  
MONUMENTS



COMPLETED SETTING  
OF MONUMENTS BY: W. DOWNEY

RECORDED  
DATE 5-6 1958  
VOL. 1  
PAGE 15

APPROVED *For M. Bowen*  
DATE 29 April 1958  
RIGHT-OF-WAY ENGINEER - DIV. N<sup>o</sup> 7  
REGISTERED SURVEYOR N<sup>o</sup> 3128