

FB 586

Road 5

60' West Liberty - Zanesfield - Rushsylvania Pike

14433.5 5°L Hubs set 30.03'

stakes placed on longbrake 30' from 4
7400 Hubs set

3100 Hubs set for R/W Man (24 July 46 CER)

1703
INDEXED ON MAP

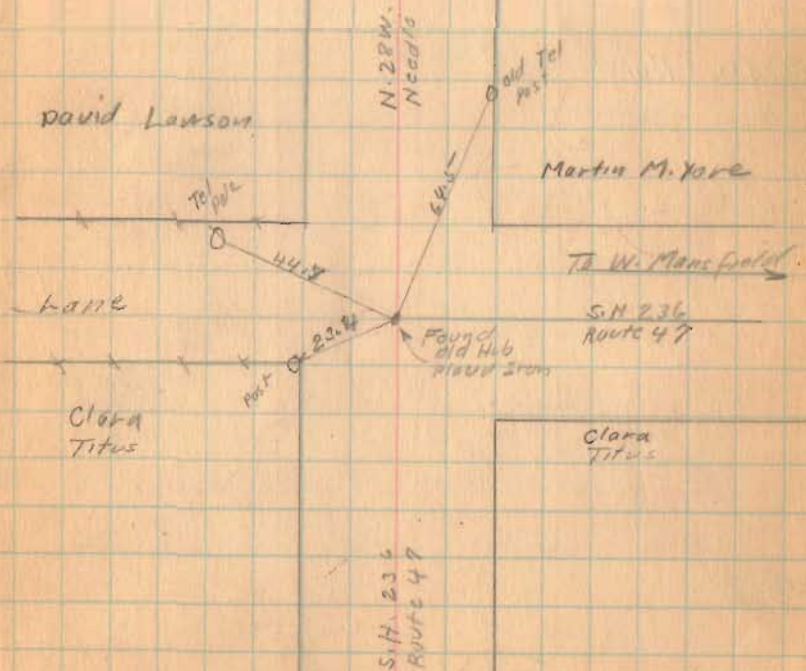
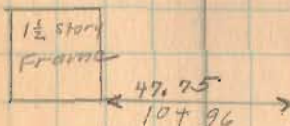
March 10, 1936

Clara
F. Wright
E. Cole
& Wilgus.

86

HUB ← 30.03 → 28 → 30.03 → HUB

Sta. 14+33.5
Pike Road
50.0' Left



FB 586

5-10-36

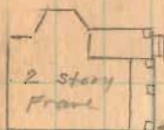
67

Road 15

30+00 Hubs set

25+00 Hubs set

20+00 Hubs set



90+1
50+86



Concrete Box

C.H. Hotending

No Fence

Old brick
school

96+1
21+27

21+07

Road No. 26
16+84 Apparent E

Forest
Longbrake

15+66

David Lawson

Martin M. York

1703

INDEXED ON MAP

FB 586

Road 15

44100 Hubs set

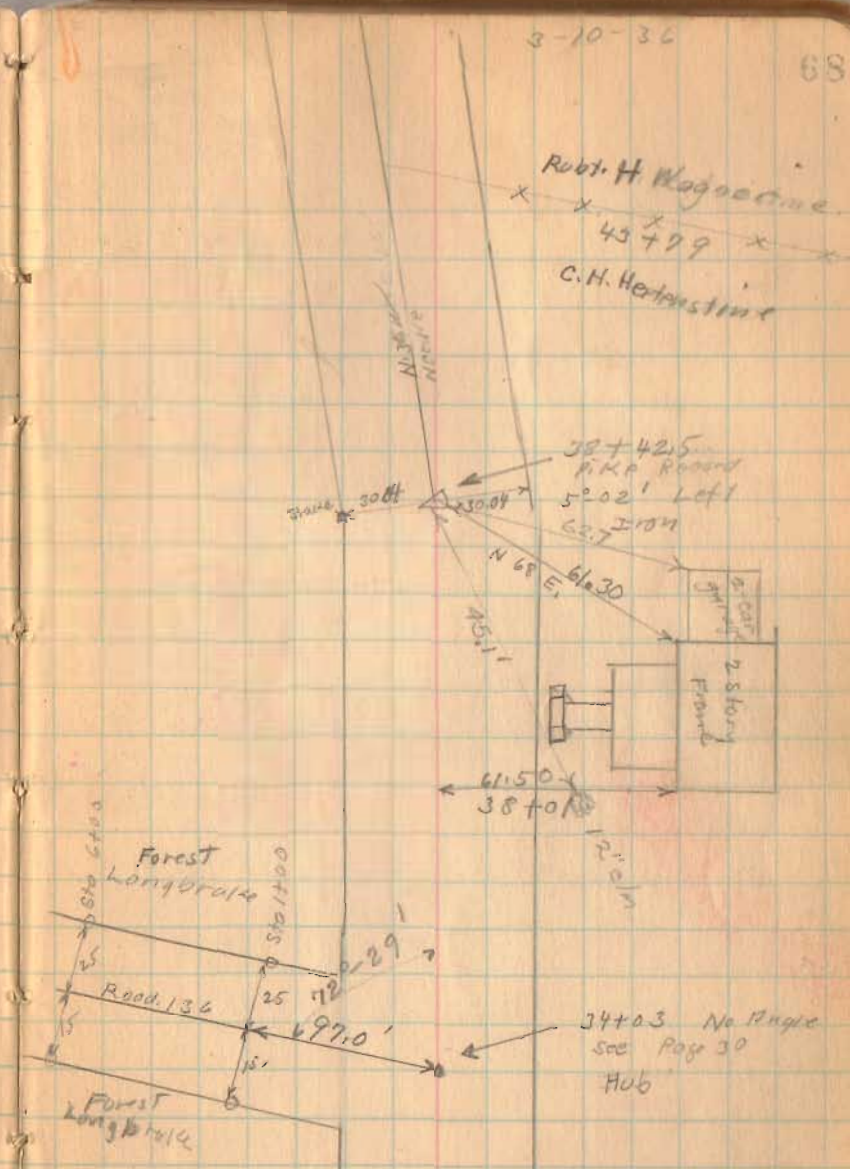
38492.5 Hub left only

35400 Hubs set

1703
INDEXED ON MAP

3-10-36

68



County Highway No. 5

Sta. 61+60 Hubs Set for Man's.

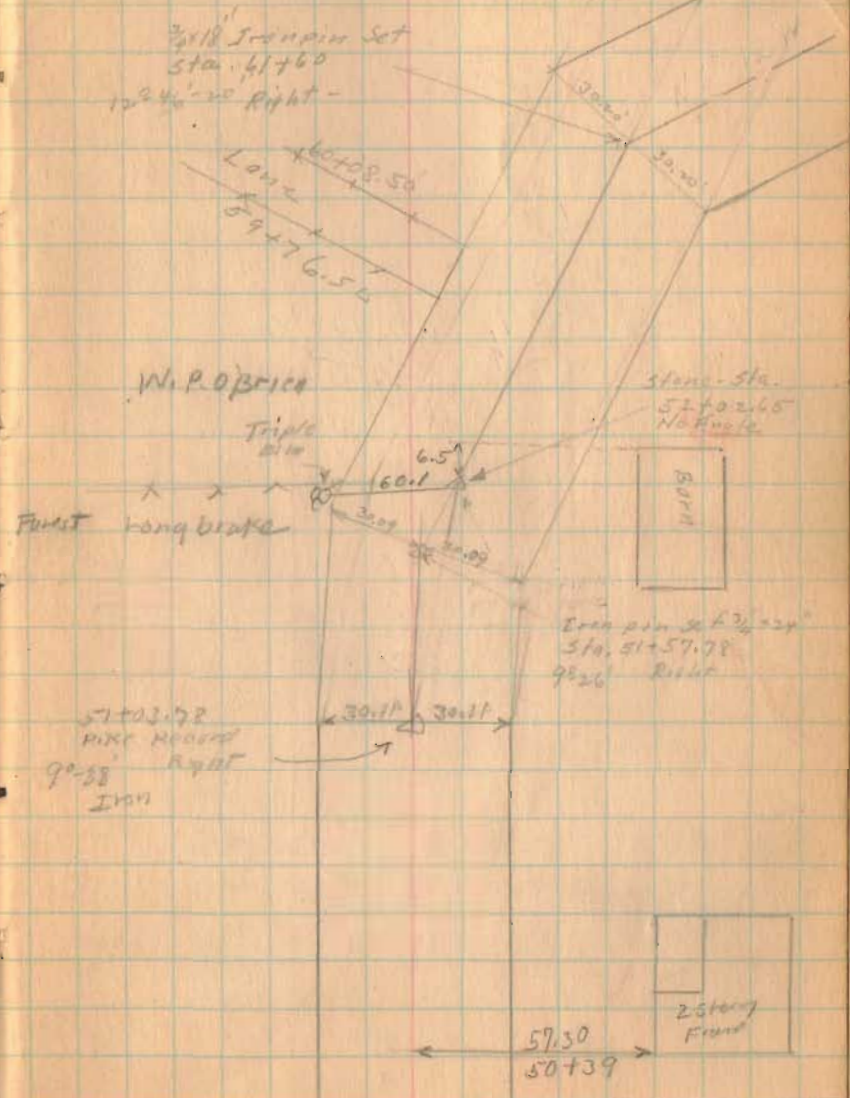
Sta. 56+00 Hubs Set for Man's.

Station 51+57.78 Hubs Set for Man's.

Station 51+03.78 Hub Set for Monument
Left side only (Man. Sta. 505K
26-51496)

1703

INDEXED ON MAP



FB 713

C.R. 5
Rushcreek Twp.
Logan Co., Ohio

1A+32.53 - P.I. - Fd. $\frac{3}{4}$ " dia.

iron bar \approx 8" deep -

Shown as being Sta.

1A+33.5 in F.Bk. # 588,

pg. 66

$A^{\circ} 58' 18''$ Lt.

0+07.00 - P.O.T. - Fd. $\frac{5}{8}$ " dia.

capped (L.C.E.O.) iron bar in
monument box - Intersection

T.R. 273 w/ C.R. 5 - Ref: F.Bk. #

701, pg. 38 & F.Bk. # 710, pg. 72.

0+00 - P.I. - Fd. eye bolt in
monument box -

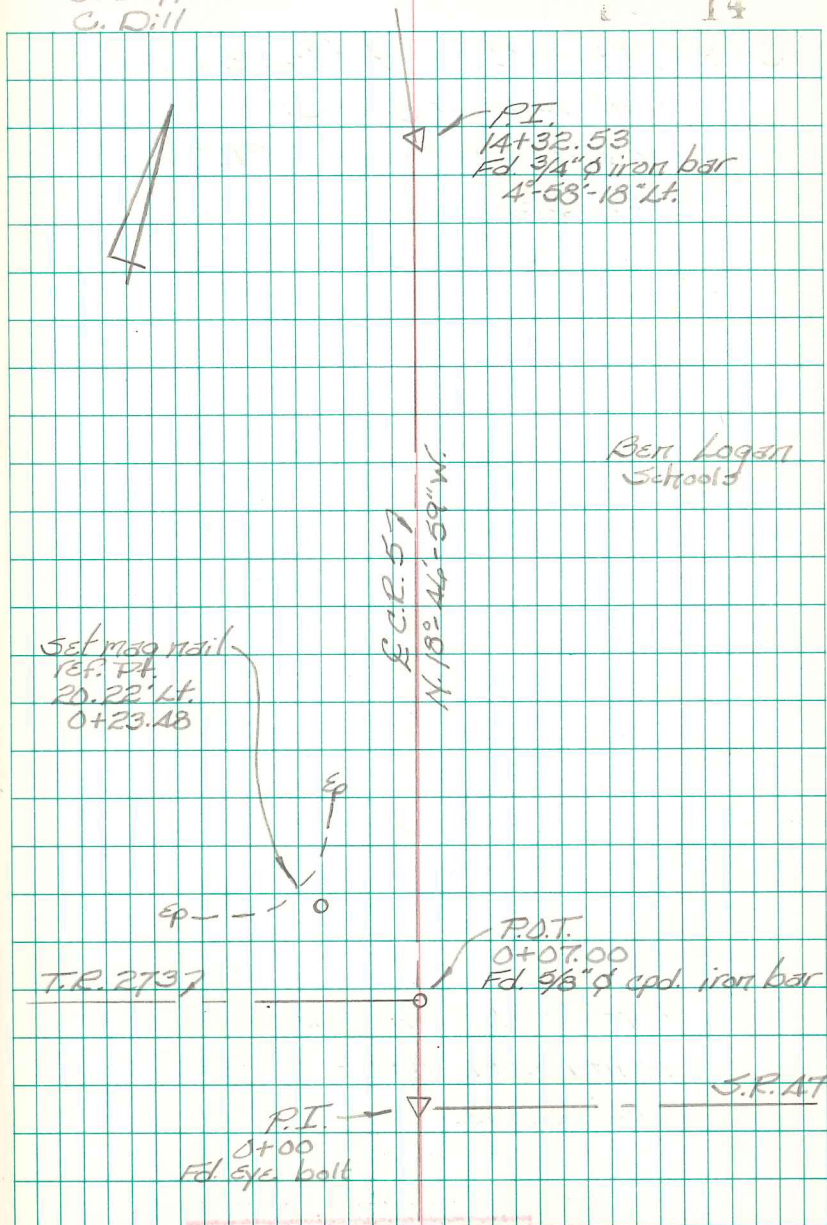
Ref: F.Bk. # 710, pg. 72

INDEXED ON MAP
1703

B. Simmons
G. Dappert
C. Dill

April 13

14



INDEXED ON MAP

FB 713

C.E. 5
Rushcreek Twp.
Logan Co., Ohio

38+40.19 - P.I. - Fd. $\frac{3}{4}$ " dia. iron
bar \approx 8" deep - shown as
Sta. 38+42.5 in F.B.K. # 588,
pg. 48.
5°-02'-07" Lt.

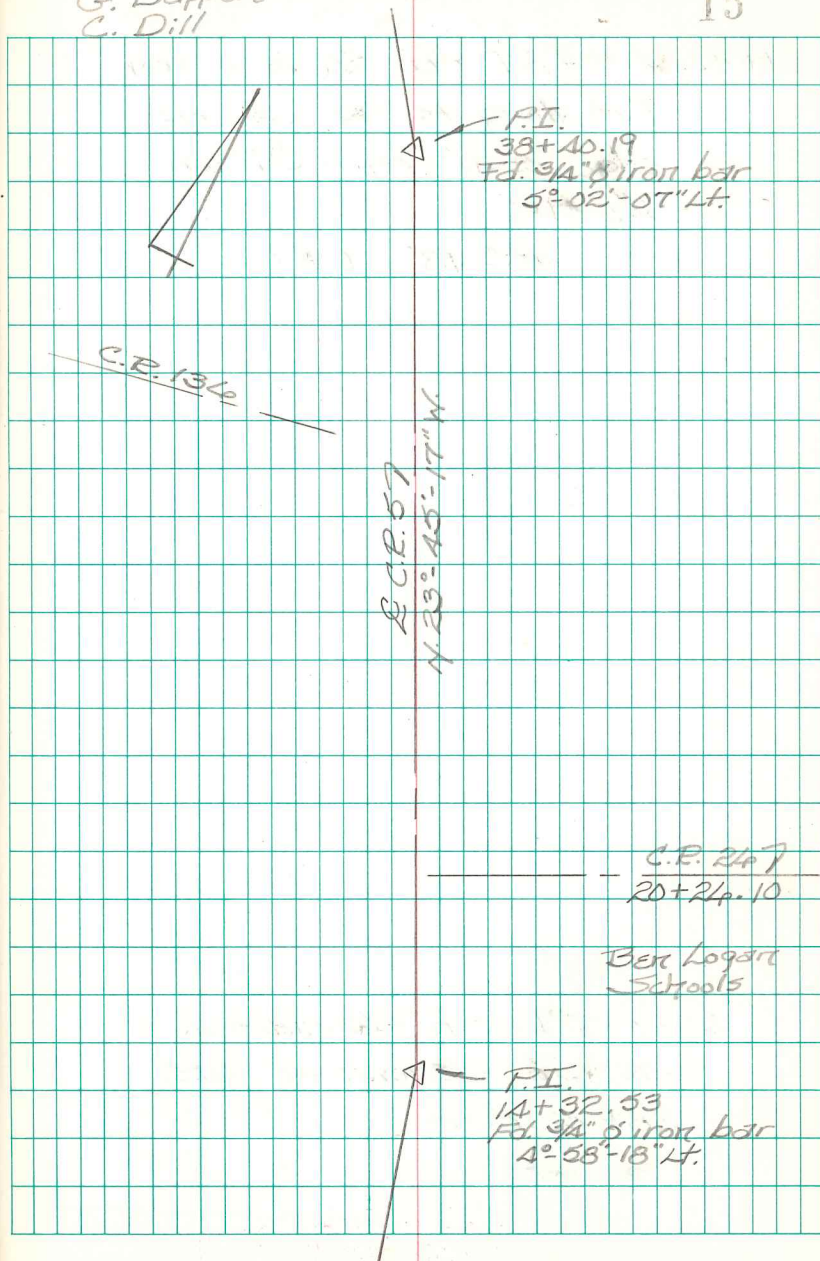
14+32.53 - P.I. - Fd. $\frac{3}{4}$ " dia. iron
bar \approx 8" deep - shown as
being Sta. 14+33.5 in F.B.K. #
588, pg. 46.
4°-58'-18" Lt.

INDEXED ON MAP
1703

B. Simmons
G. Dappert
C. Dill

April 13

15



FB 713

C.R. 5
Rustcreek Twp.
Logan Co., Ohio

61+56.66 - P.I. - Fd. $\frac{3}{4}$ " dia. iron
bar along the W. pavement
edge ≈ 4 " deep - Shown as
Sta. 61+60 in F.B.K. # 588, pg. 49.
 $12^{\circ} 48' 34"$ Rt.

51+54.60 - P.I. - Fd. $\frac{3}{4}$ " dia. iron bar
 ≈ 6 " deep - Shown as Sta.
51+57.78 in F.B.K. # 588, pg. 49.
 $9^{\circ} 24' 34"$ Rt.

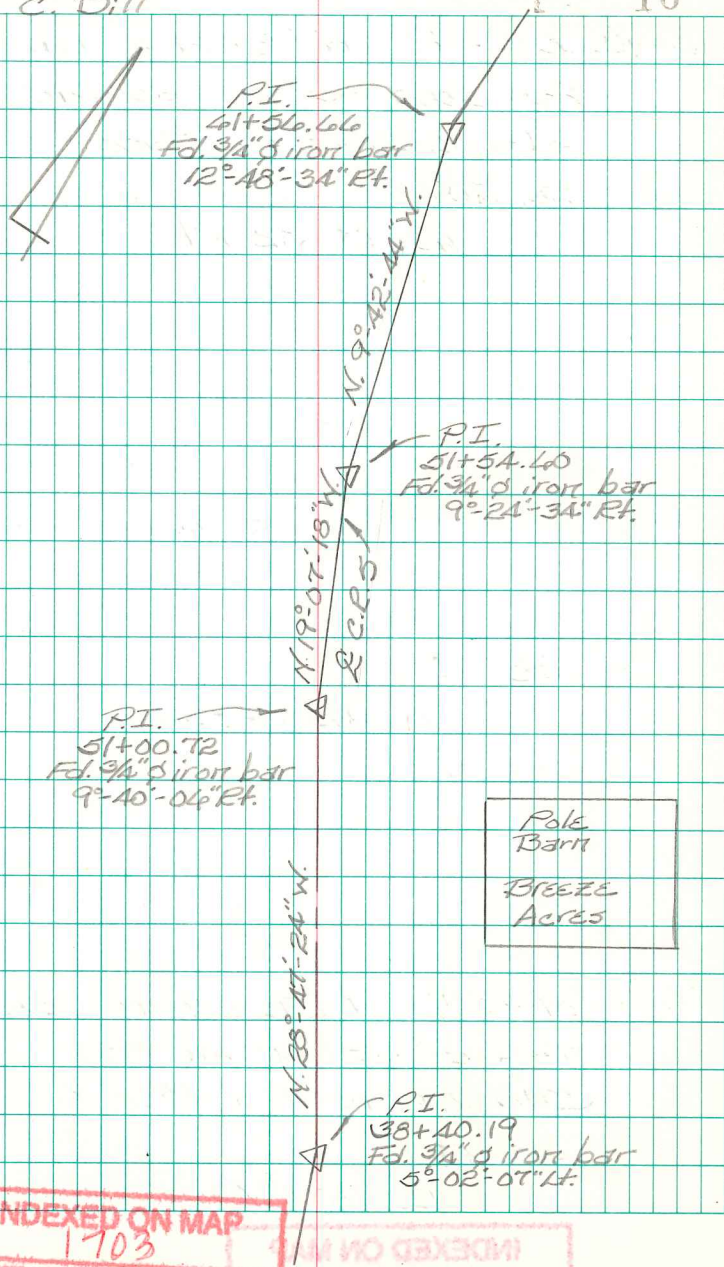
51+00.72 - P.I. - Fd. $\frac{3}{4}$ " dia. iron
bar ≈ 10 " deep - Shown as
Sta. 51+03.78 in F.B.K. #
588, pg. 49.
 $9^{\circ} 40' 06"$ Rt.

38+40.19 - P.I. - Fd. $\frac{3}{4}$ " dia. iron bar
 ≈ 8 " deep - Shown as Sta.
38+42.5 in F.B.K. # 588,
pg. 48
 $5^{\circ} 02' 07"$ Lt.

B. Simmons
G. Dappert
C. Dill

April 13

16



INDEXED ON MAP
1703

INDEXED ON MAP

FB 713

C.R. 5
Rushcreek Twp.
Logan Co., Ohio

69+18.48 - P.I. - Fd. $\frac{3}{4}$ " dia. iron bar
 ≈ 3 " deep - Shown as Sta.
 69+22.2 in F.B.K. # 588,
 pg. 70.
 12°-19'-32" Rt.

64+00.43 - P.I. - Fd. $\frac{3}{4}$ " dia. iron
 bar ≈ 4 " deep - Shown as
 Sta. 64+04 in F.B.K. # 588,
 pg. 70.
 9°-42'-13" Rt.

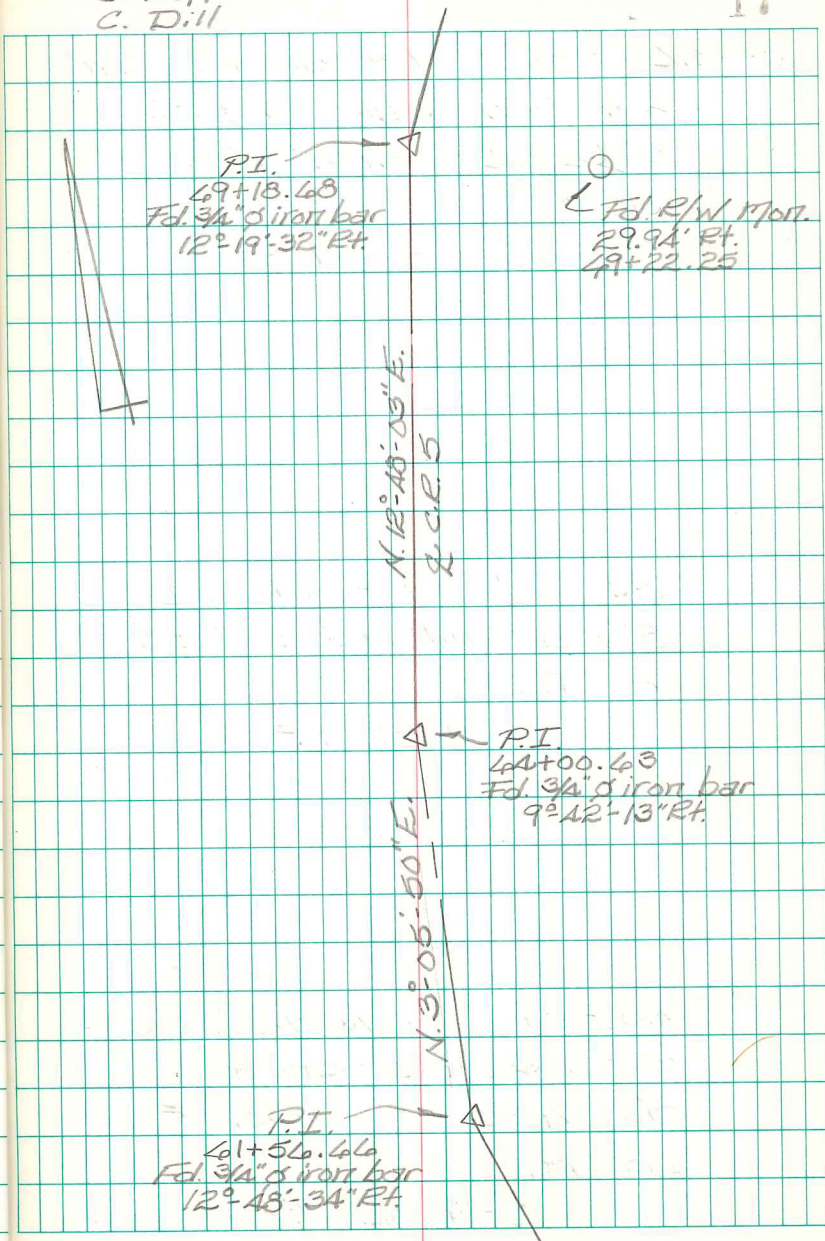
61+56.66 - P.I. - Fd. $\frac{3}{4}$ " dia. iron bar
 along the W. pavement edge
 ≈ 4 " deep - Shown as
 Sta. 61+60 in F.B.K. # 588,
 pg. 69.
 12°-48'-34" Rt.

INDEXED ON MAP
1703

B. Simmons
G. Dappert
C. Dill

April 13

17



INDEXED ON MAP

FB 713

C.E. 5
Rushcreek Twp.
Logan Co. Ohio101+34.48 - P.I. - Fd. $\frac{3}{4}$ " dia. iron
bar \approx 14" deep - Fd. R.R.

Spike near iron at 10" deep -

Reset R.R. Spike over iron
to surface & set $\frac{3}{4}$ " mag
nail straddles. Shown as

Sta. 101+39.70 in F.Bk. #

599, pg. 55.

 $9^{\circ}-53'-03"$ Rt.89+00.93 - P.I. - Fd. $\frac{3}{4}$ " I.D. pipe \approx
8" deep - Intersection C.R. 5

w/ C.R. 118 - Shown as

Sta. 89+05.30 in F.Bk. # 599,

pg. 54

 $0^{\circ}-00'-14"$ Lt.49+18.48 - P.I. - Fd. $\frac{3}{4}$ " dia. iron
bar \approx 3" deep - Shown as

Sta. 49+22.2 in F.Bk. #

588, pg. 70

 $12^{\circ}-19'-32"$ Rt.

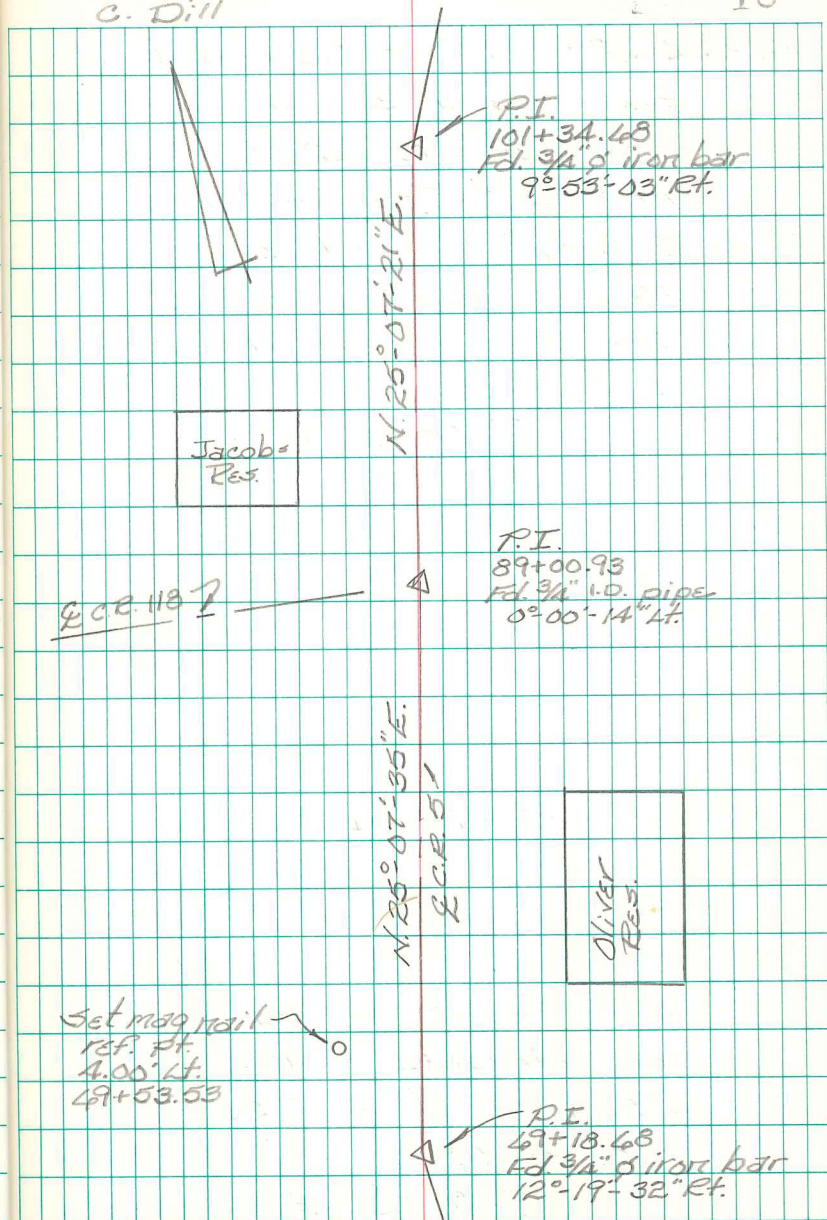
INDEXED ON MAP

7103

B. Simmons
G. Dappert
C. Dill

April 13

18



INDEXED ON MAP

7113

FB 713

C.P. 5
Rushcreek, Twp.
Logan Co., Ohio

122+46.27 - P.I. - Searched
for iron bar shown as
being at Sta. 122+52.3
in F.Bk. # 599, pg. 57. -
Did not find - Reset a
3/4" dia. iron bar using
the R/W monuments
found.

9°-35'-14" Lt.

101+34.68 - P.I. - Fd. 3/4" dia. iron
bar ≈ 14" deep - Fd. R.R.
Spike near iron at 10" deep -
Reset R.R. Spike over iron
to surface & set 3/4" mag
nail straddles - shown as
Sta. 101+39.70 in F.Bk. #
599, pg. 55.

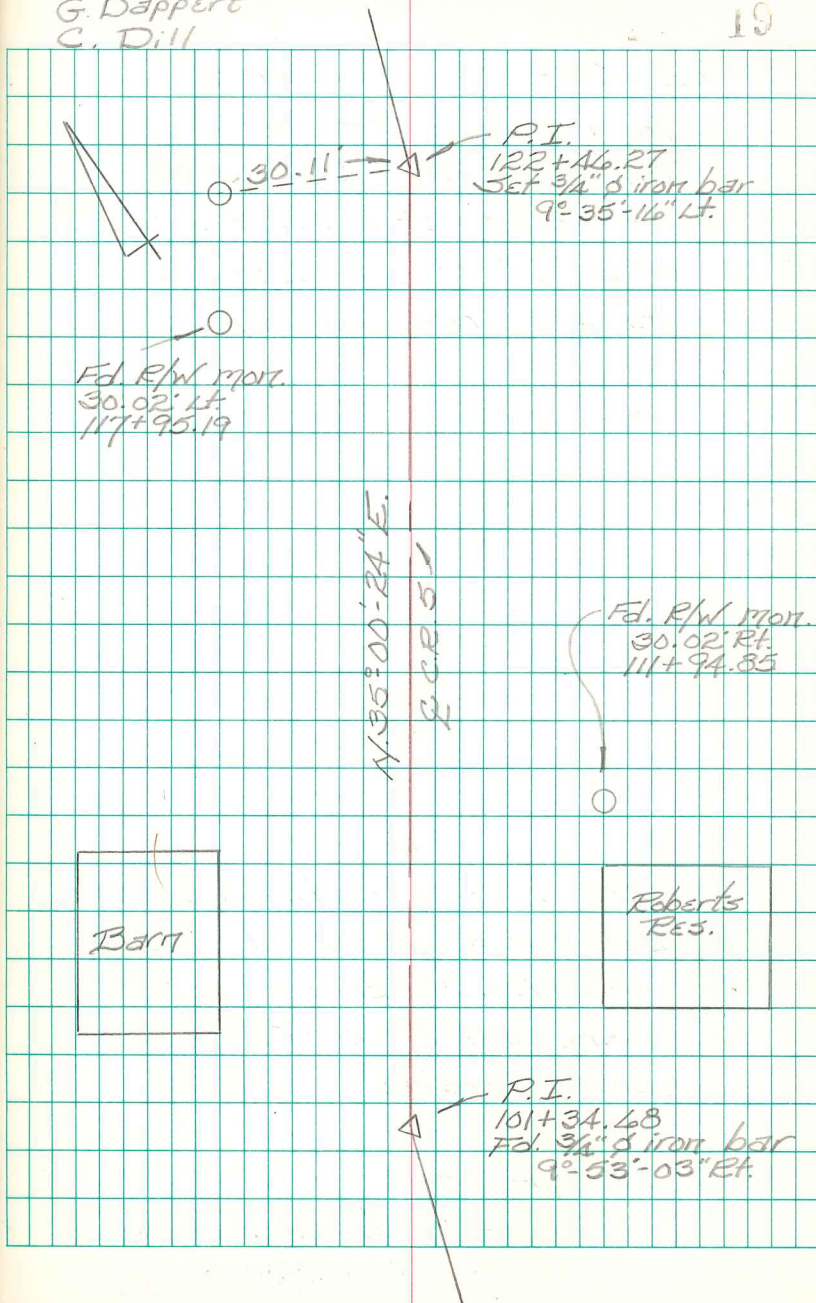
9°-53'-03" Rt.

INDEXED ON MAP
1703

B. Simmons
G. Dappert
C. Dill

April 13

19



FB 713

C.R. 5
Rushcreek Twp.
Logan Co., Ohio

152+27.43 - P.I. - Fd. stone &
installed monument box -
Intersection C.R. 5 w/ C.R. 20 -
Shown as Sta. 152+38.7 in
F.B.K. # 599, pgs. 59 & 60.
End of this survey.

146+58.73 - P.T. - Set R.R. Spike

145+72.80 - P.I. - Fd. stone -
placed pos. of brick around
stone - Shown as Sta. 145+78.2
in F.B.K. # 599, pgs. 58 & 60.
35°-22'-31" Lt.

144+81.00 - P.C. - Set R.R. Spike

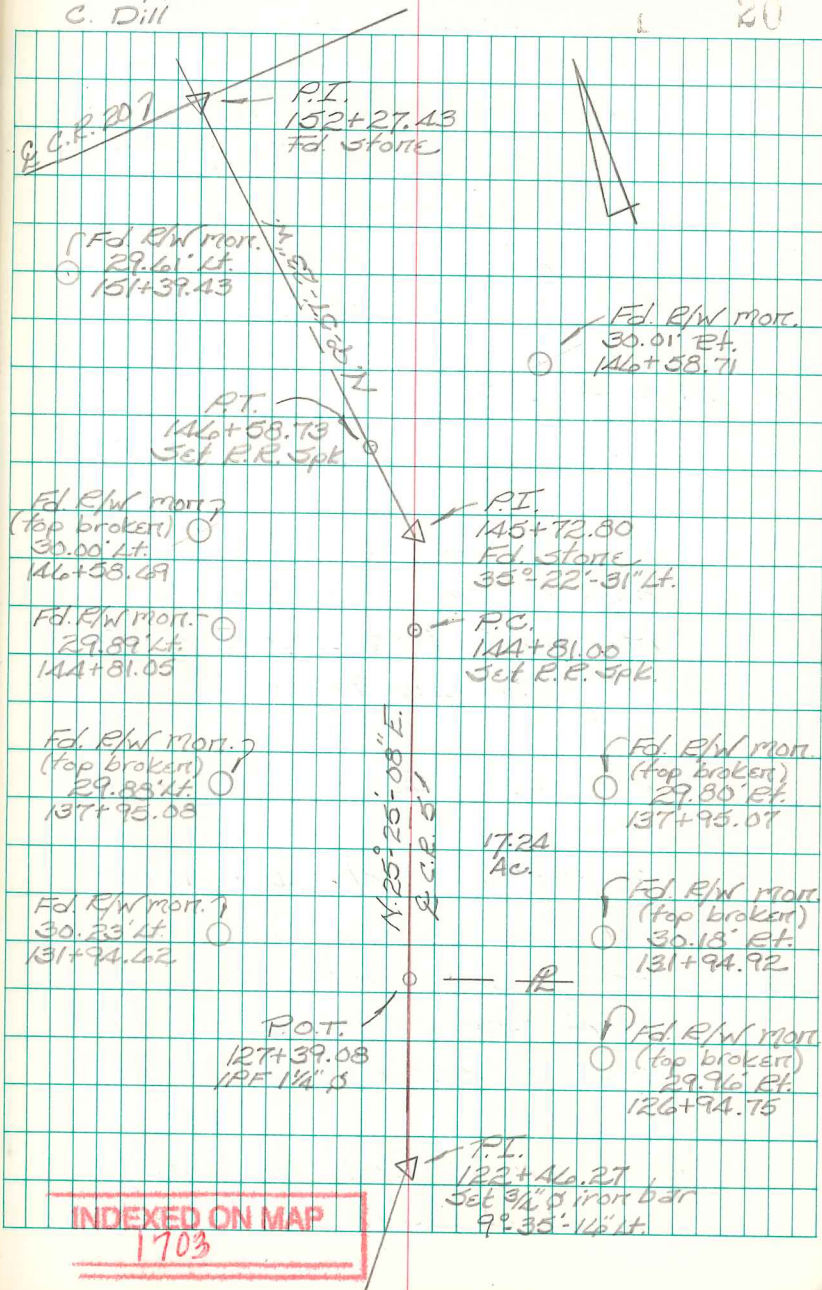
127+39.08 - P.O.T. - Fd. 1 1/4" dia. iron
bar - S.W. corner of 17.24
acre tract - Ref: 1952
Stirk survey of 17.24 Acs.
(O.C.S. #1, pg. 44).

122+46.27 - P.I. - Set 3/4" dia. iron
bar - see previous page for
complete description.

B. Simmons
G. Dappert
C. Dill

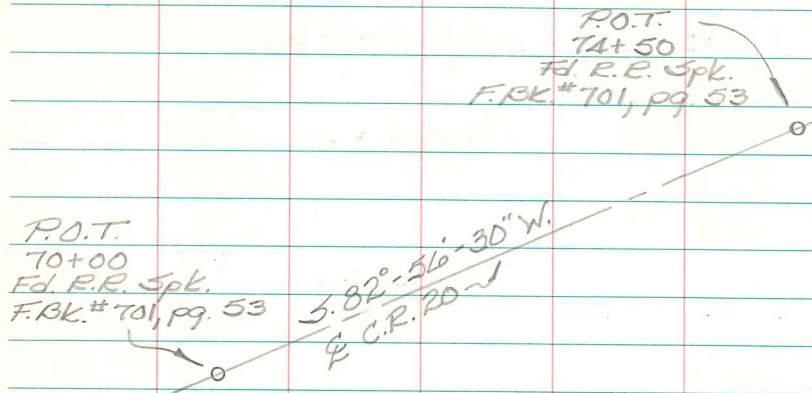
April 13

20



FB 713

C.E. 5
Rustcreek Twp.
Logan Co., Ohio



- | Pt. | DESC. |
|-----|---|
| A. | - Fd. R.R. Spike - N.E. corner of 0.918 acre tract - 5.27' Rt. of $\frac{1}{2}$ Sta. 148+72.79 - Ref: 1986 Geeslin Survey (R-7585). |
| B. | - Fd. capped $\frac{3}{8}$ " dia. iron bar - S.E. corner of 0.918 acre tract - 8.44' Rt. of $\frac{1}{2}$ Sta. 146+54.98 - Ref: 1986 Geeslin Survey (R-7585). |
| C. | - Fd. $\frac{3}{8}$ " dia. iron bar w/ top bent - straightened - S.W. corner of 0.918 acre tract - Ref: 1986 Geeslin Survey (R-7585). Fd. bar in gravel driveway. |

B. Simmons
G. Dappert
C. Dill

April 13

21

