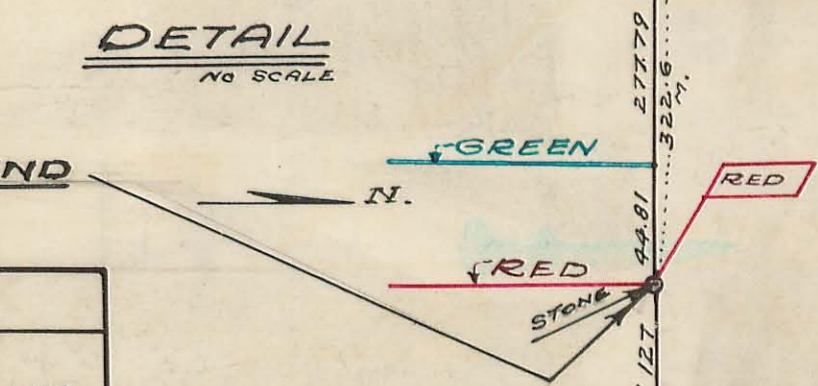
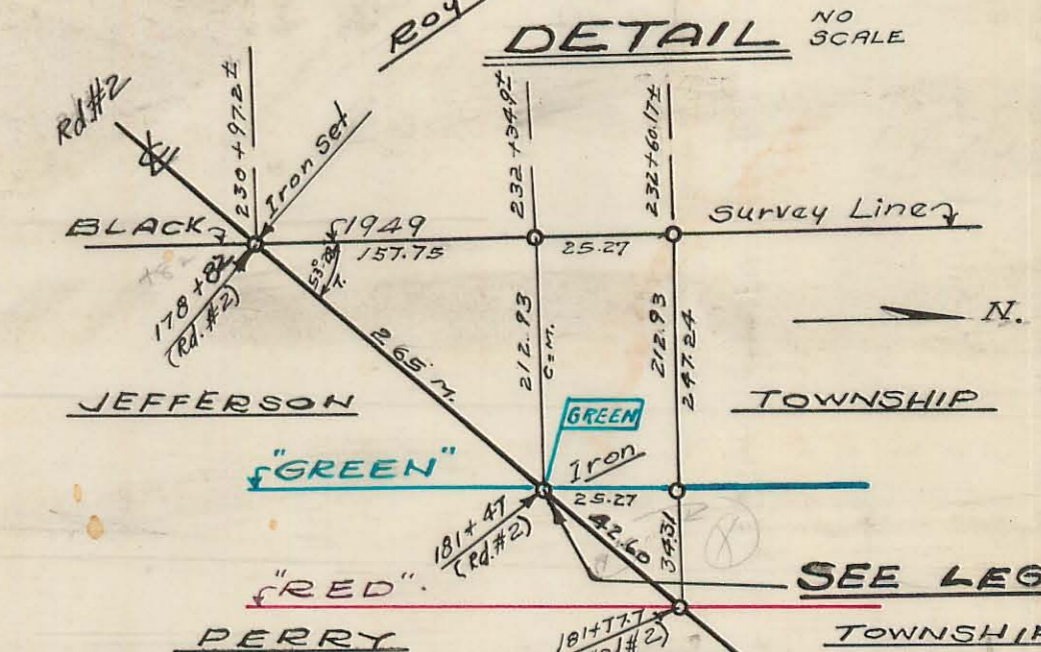
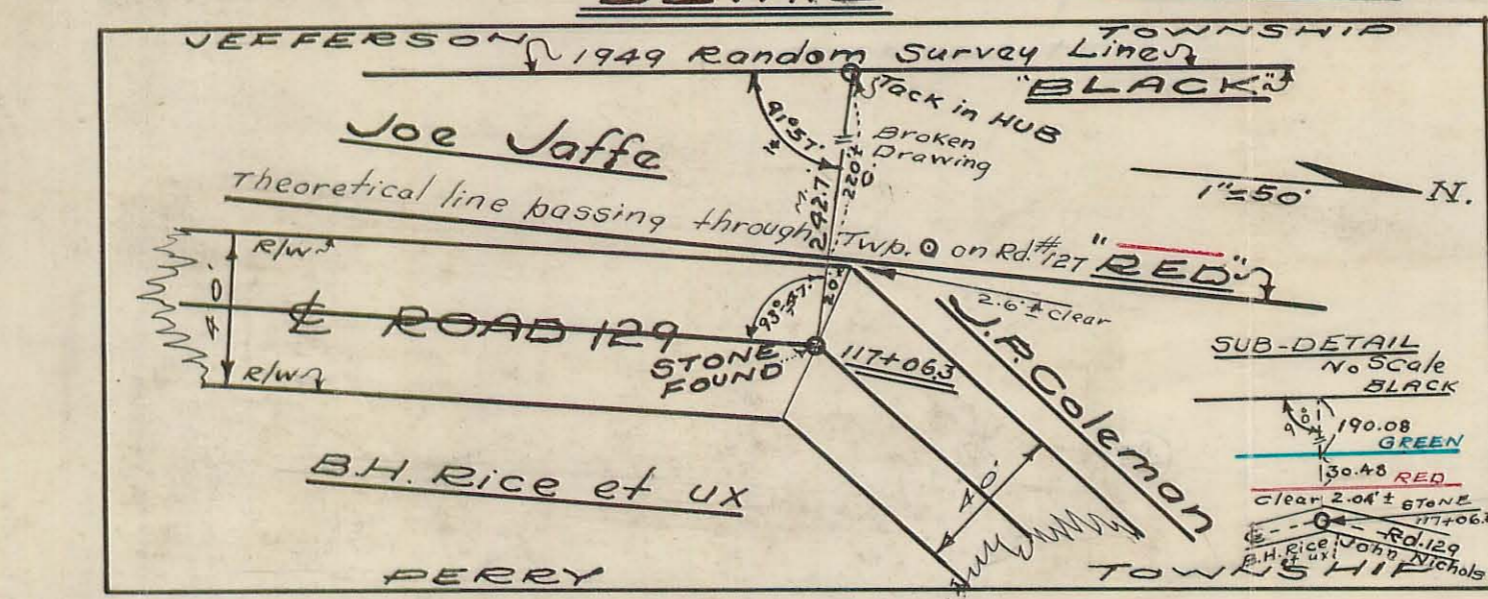
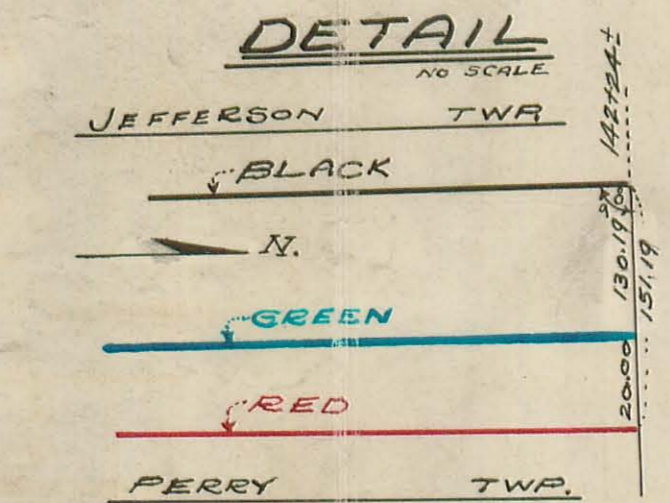
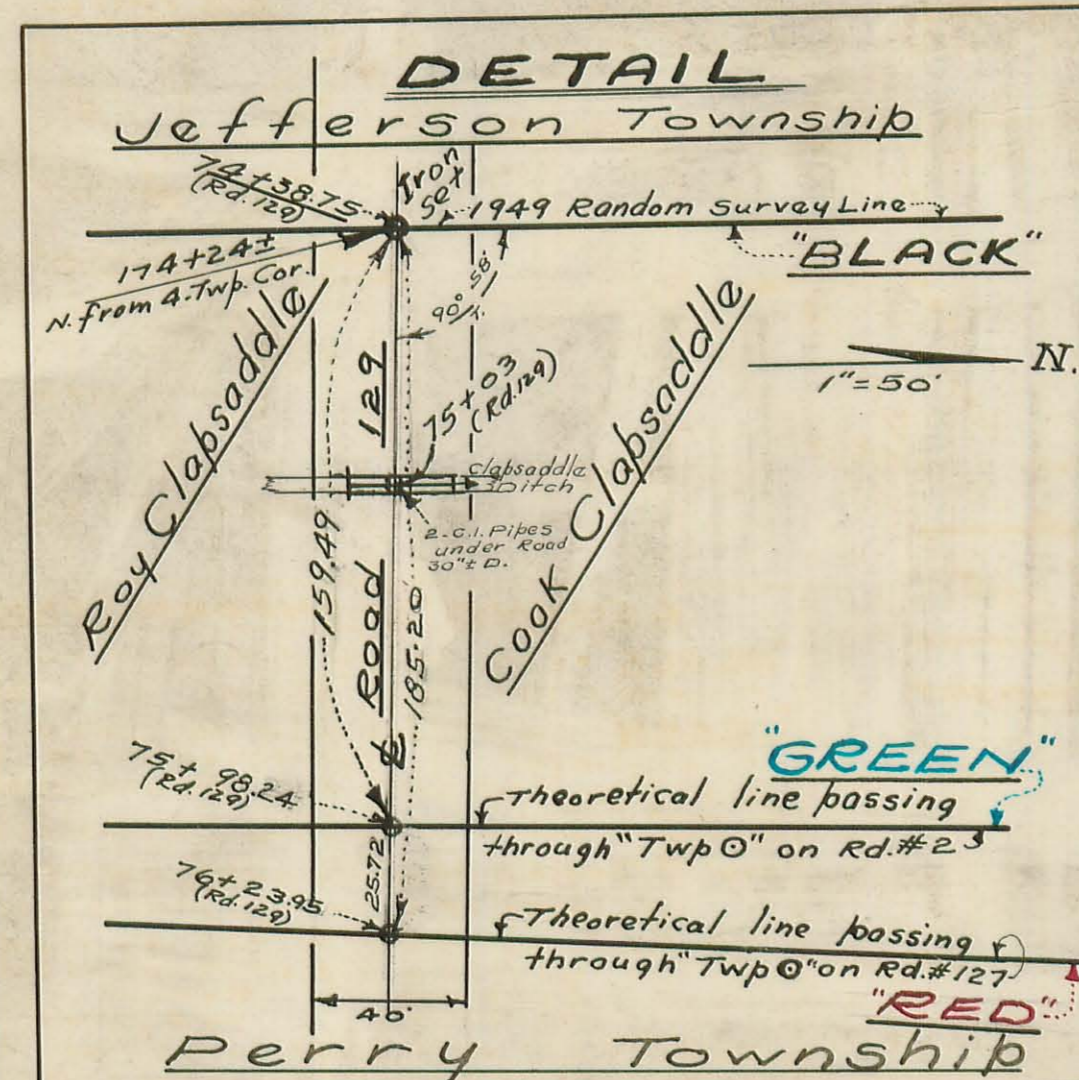
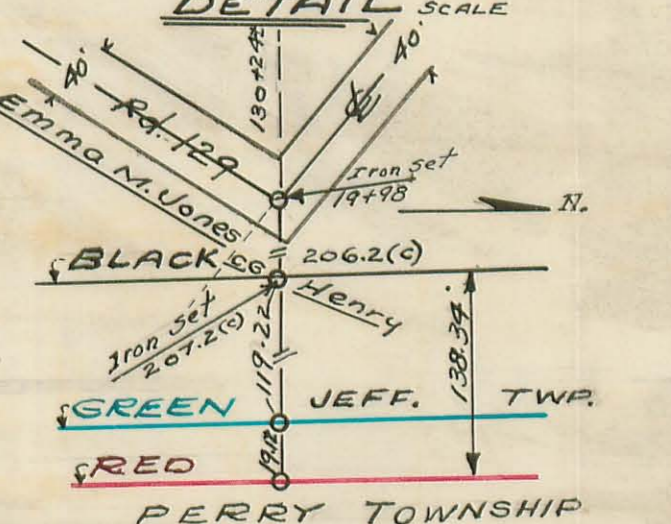
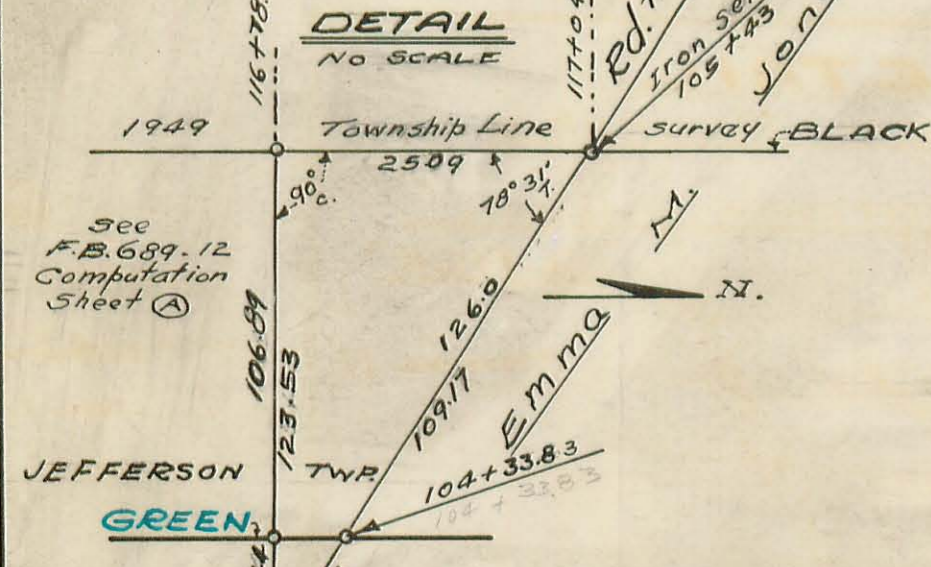
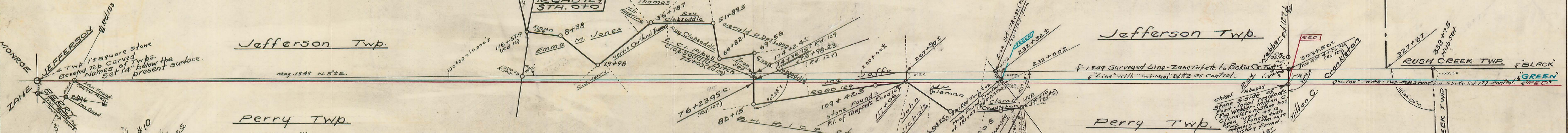


KEY MAP

Showing Proposed Road 129



LEGEND AND INFORMATION

"BLACK" is the survey of 1949, as run and recorded in Field Books 682 and 689.

"GREEN" is a line (on paper only) whose control or alignment is referenced to an IRON or alignment is referenced to an IRON and two Twp. Line con. MONUMENTS-181+47 (Rd #2).

"RED" - Control of this line is a reputed (see F.B. 689 page 17) Township Stone on s. side C.H. #127.

All three of these lines have a common starting point, on South, at "The 4 - Township Mon." on South, at "The 4 - Township Mon."

O = Iron or Hub (set or found), as noted.
 C = Calculated G = Green
 M = measured T = Turned R = Red

Where (S) used with stations on Twp. line Survey reference is to scaled, Computed and approx. distances.

FIELD BOOKS

Notes of this 1949 Survey F.B. Nos. 682 & 689

Field Books etc. Consulted 451 (14-18); 524 (7-20); 560 (39-45); 572 (44-64); 573 (31-37); 579 (50-77); 588 (6-20); 615 (5-28); 625 (26-30); #1 Rd. Record - (148 etc.)

LOGAN COUNTY OHIO

Map Showing
JEFFERSON TWP-PERRY TWP
1949 SURVEY

Scale - 1" = 1000' NOV. 1949.

E. K. CORE COUNTY ENGINEER.

Jefferson-Perry Twp. Line

7-13-49 Sunny-
Hend
Mitchell
Dobson 71

INDEXED ON MAP

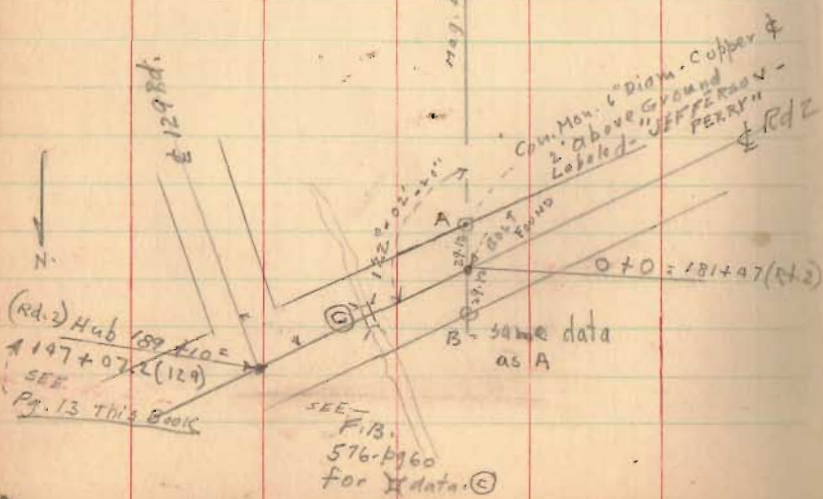
2006

Transit Line (Hub) run to vicinity
of State Route 33

7-21-49

Jefferson Twp.

Perry Twp.



(Contd. from F.B. 682 - pg. 73)

Jefferson Twp. - Perry Twp.
South-North Survey

Note: - Carved stone (Jeff. - Perry - Monroe - Zone)

As per F.B. 682. pg. 73. found and used as South end and starting point of survey. Stone and 2" d. 4' High pipe - F.B. 682 - pg. 73 constitute alignment for this survey, which was projected northwardly, double-centering all π points. using triangulation type large targets where distances were large.

No attempt made to station the survey. The Survey, however, is tied to stations of all available intersecting roads and to a survey of Rd. 129 (F.B. 682. 7-13) 1949 at, in general, points (Irons) nearest to Road 129.

checks on Alignment

Nothing found of record in subject area except:

(1) At Rd. 153 - Iron - same line as A. Twp. Stone and pipe.

(2) At Rd. 2 - F.B. 579 - pg. 60

(Nothing of record) (3) at Rd. 127 - F.B. 560 - pg. 40

Note: - also see "Aug. 49." No scale Dwg. in Drawer-R showing various ties to intersecting roads and nearby Rd. 129.

(SEE F.B. 682 - pg. 73 re. S. end and start.)

July - Aug. 1949

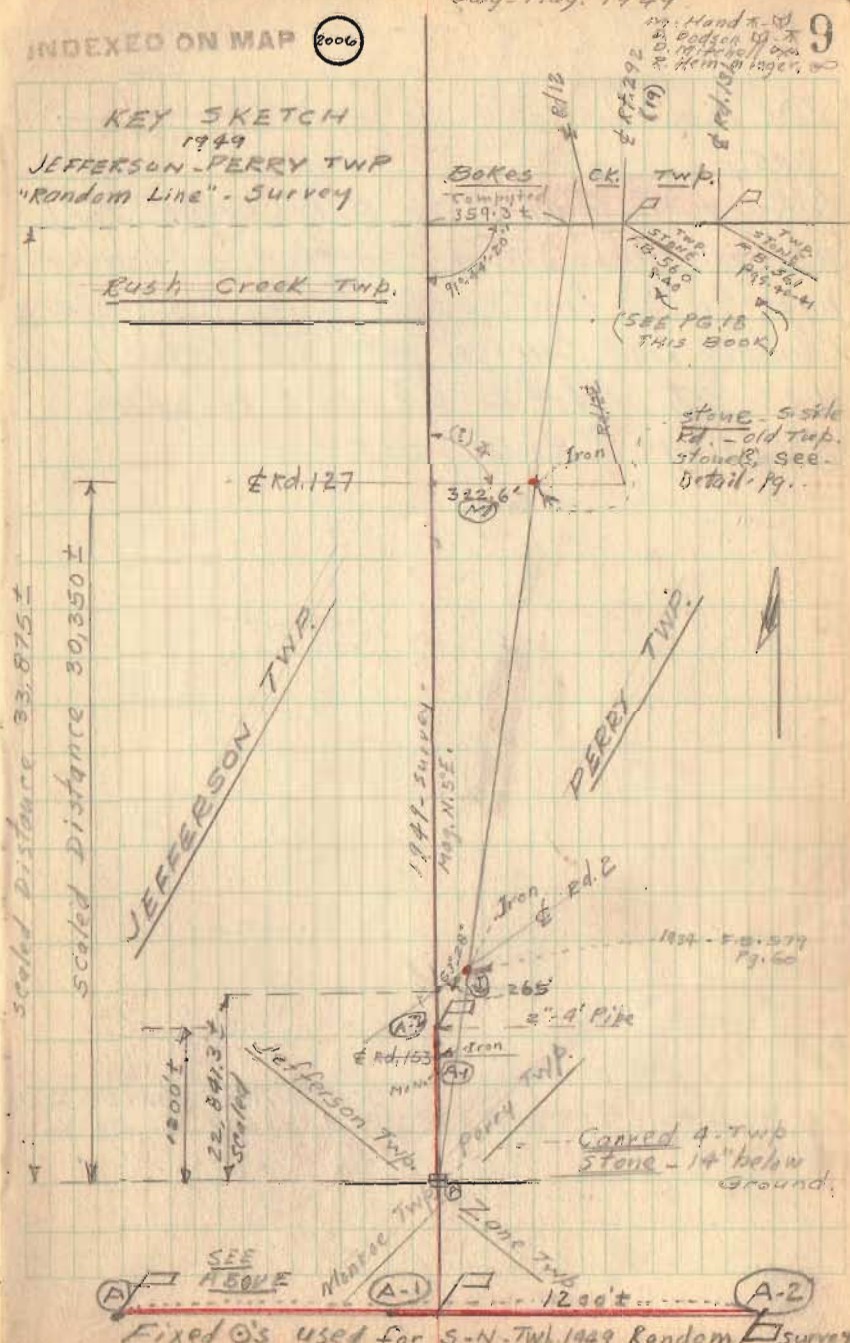
INDEXED ON MAP

2006

KEY SKETCH

1949

JEFFERSON - PERRY TWP
"Random Line" - Survey



Handwritten notes in the top right corner: 'Handwritten notes', 'in Borden 1949', 'D. 1949', 'Hemlock', 'pg. 73'.

stone 5' side
Rd. - old Twp.
stones, see
Detail - pg. 11

1824 - F.B. 579
Pg. 60

Carved 4-Twp
Stone - 14" below
Ground.

SEE 1500' E Monroe Twp. (A-1) Perry Twp. Zone Twp. 1200' (A-2)

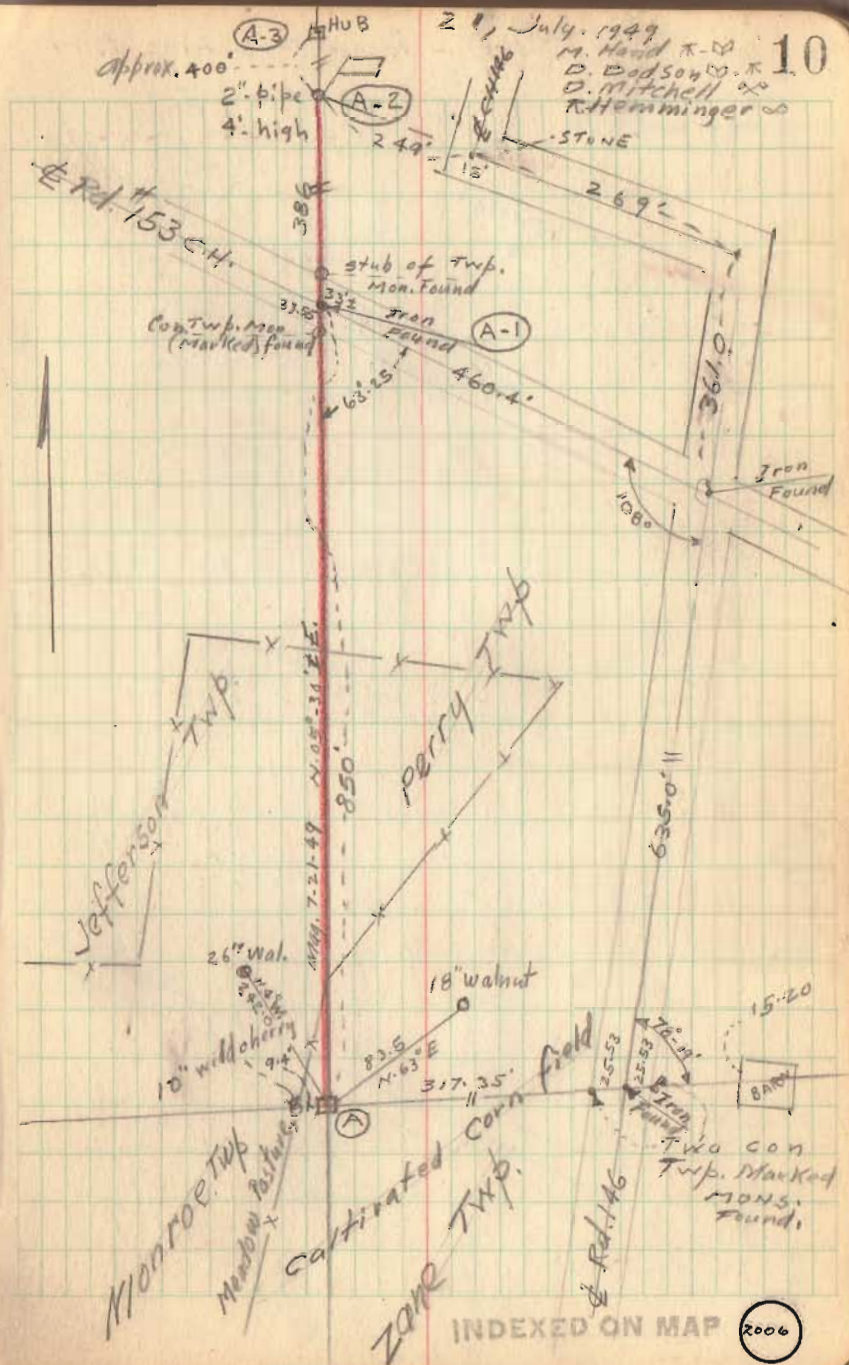
Fixed \odot 's used for S-N-Twp. 1949 Random Survey

Jeff. Perry Twp. S.-N. Random Survey

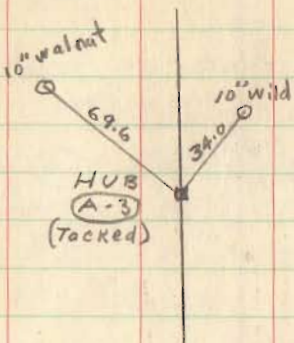
The 1200+ line - opposite page - WAS?

Carried Northward to Bokes Creek Twp. (approx. 34,000') as per method outlined on page 9. The first opportunity to compare Random line Survey with ^{and} old Twp. points was at Rd. #2 23,000' ± N. of (A) - see page 9 this book.

References (Area-A. [A-1]) F.B. 451 - Pgs. 29-32 33
 " " 573. " 34-36

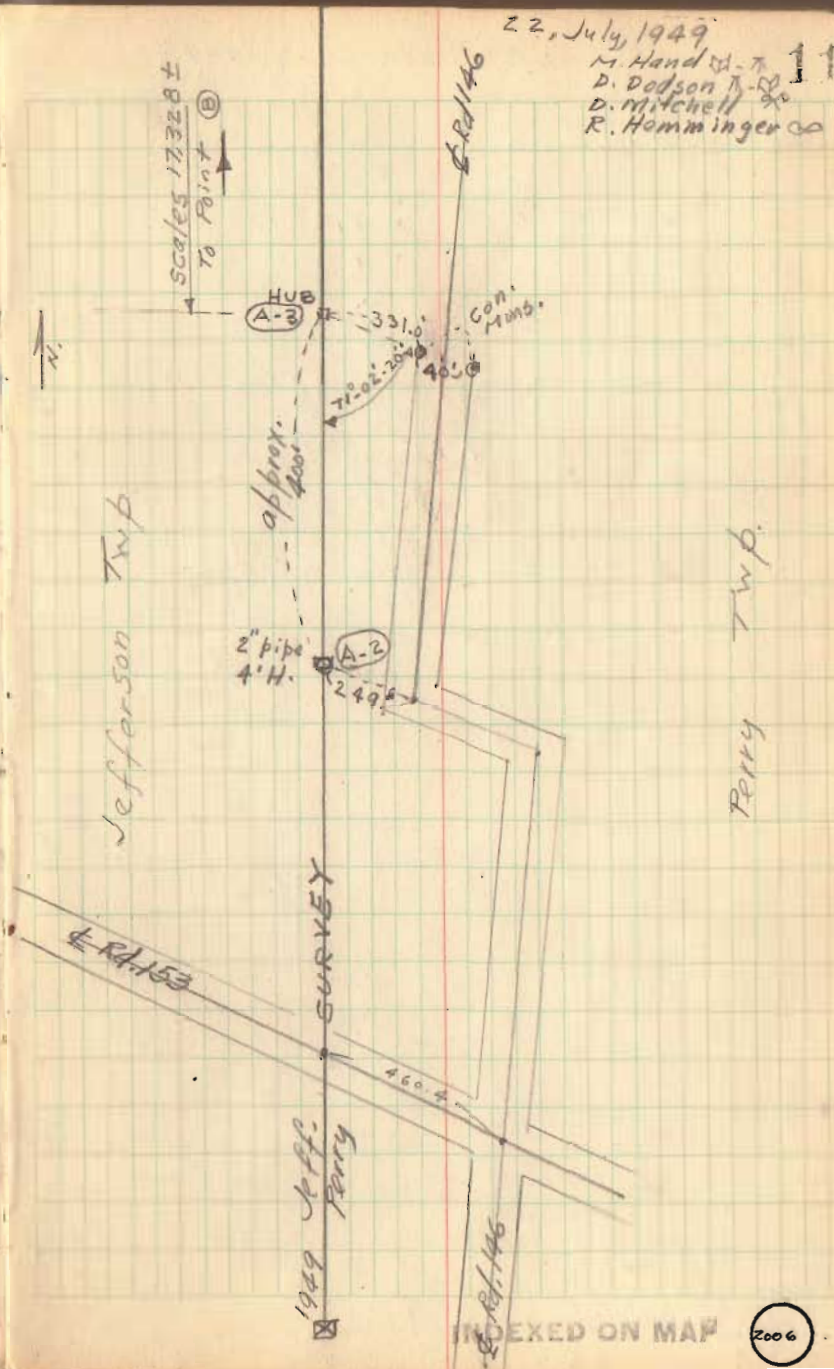


Jeff. - Perry Twp. Line 1949



22, July, 1949

M. Hand
D. Dodson
D. Mitchell
R. Homminger



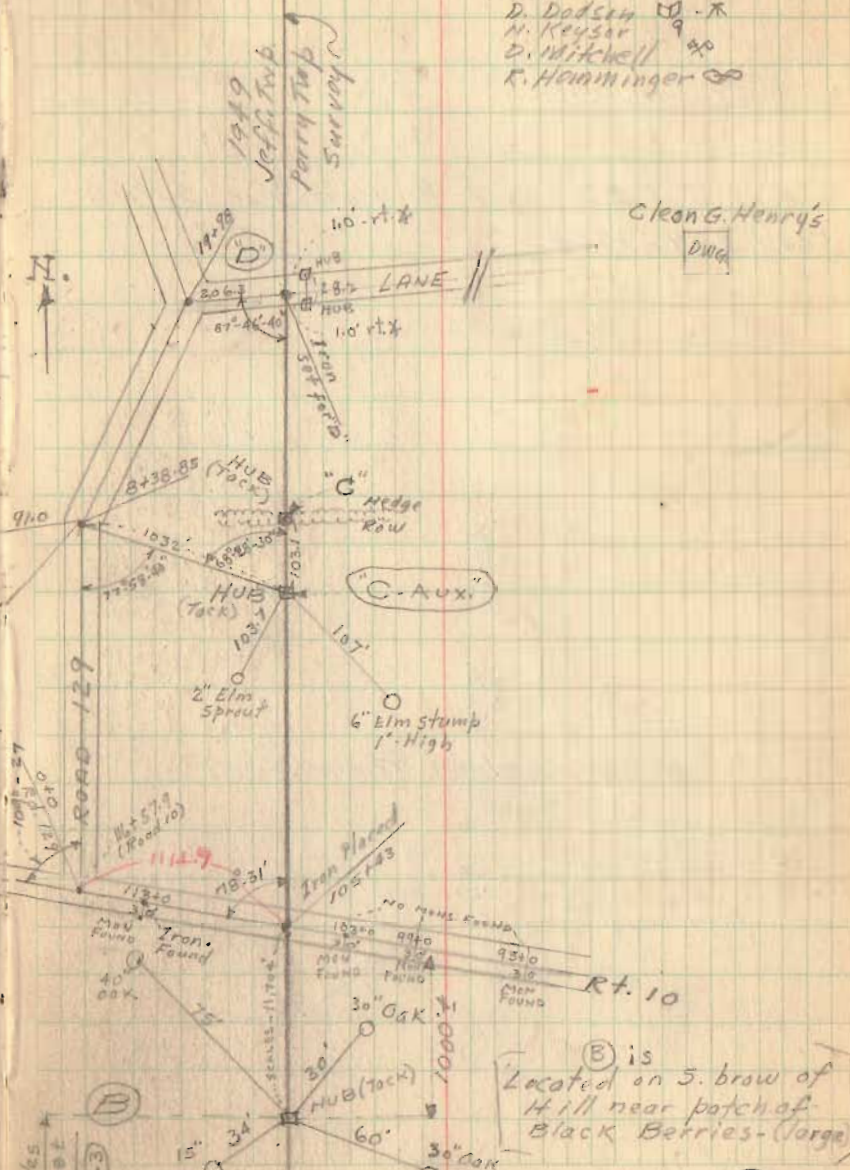
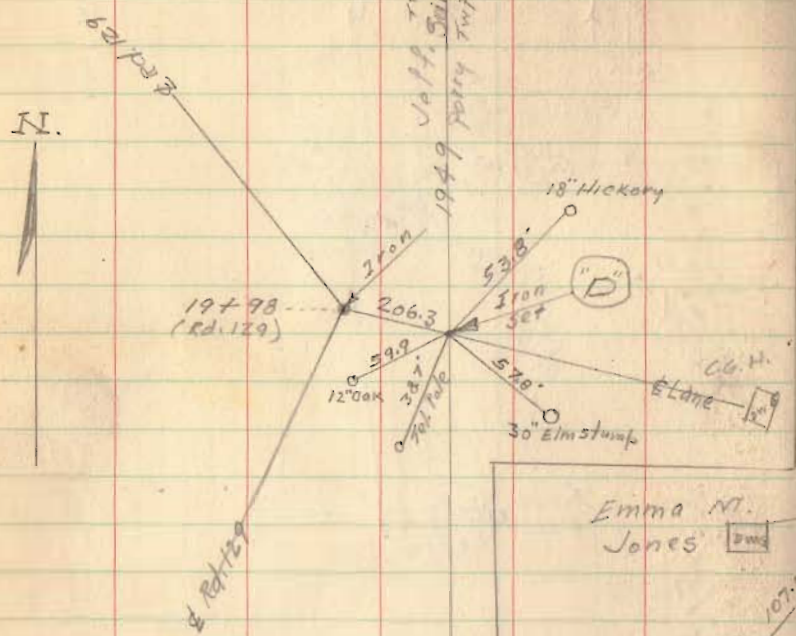
INDEXED ON MAP

2006

Jeff. - Perry Line 1949

Aug 22 & 23, 1949

- M. Hand - π - \times
- D. Dodson \square - \times
- N. Keyser \square - \times
- D. Mitchell \square - \times
- R. Hamming \square - \times

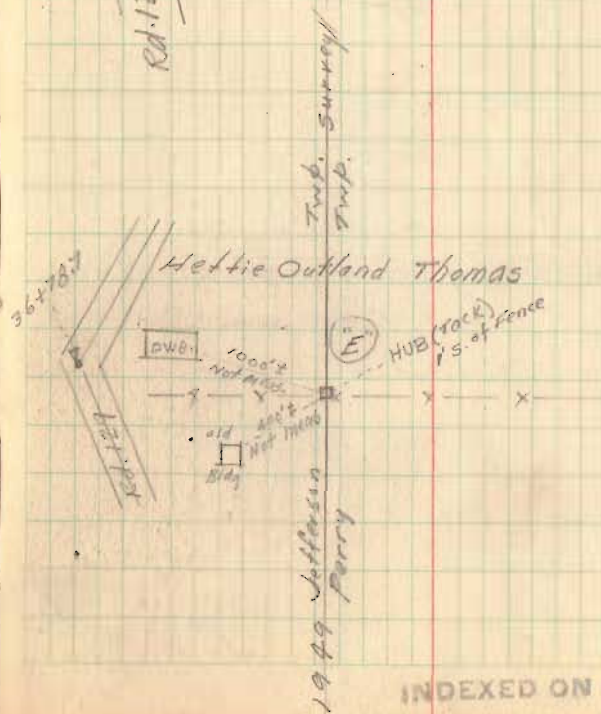
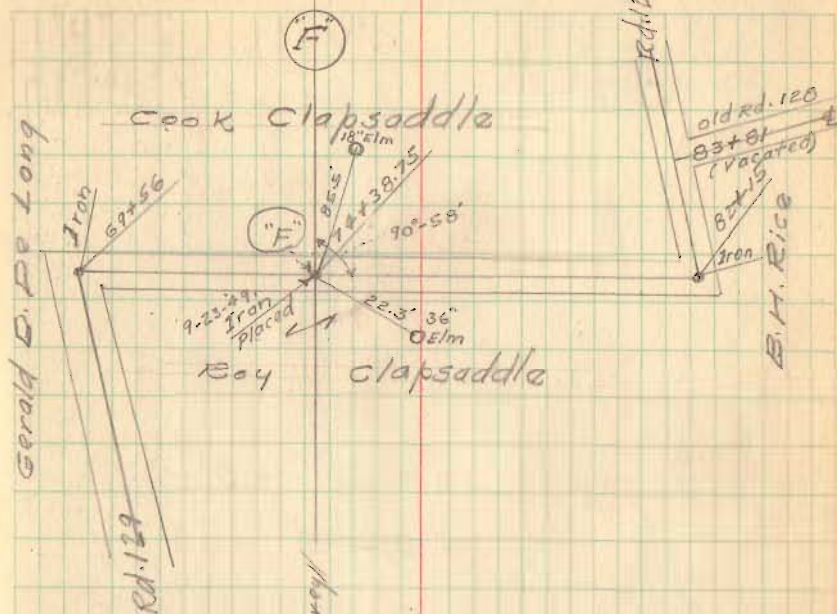
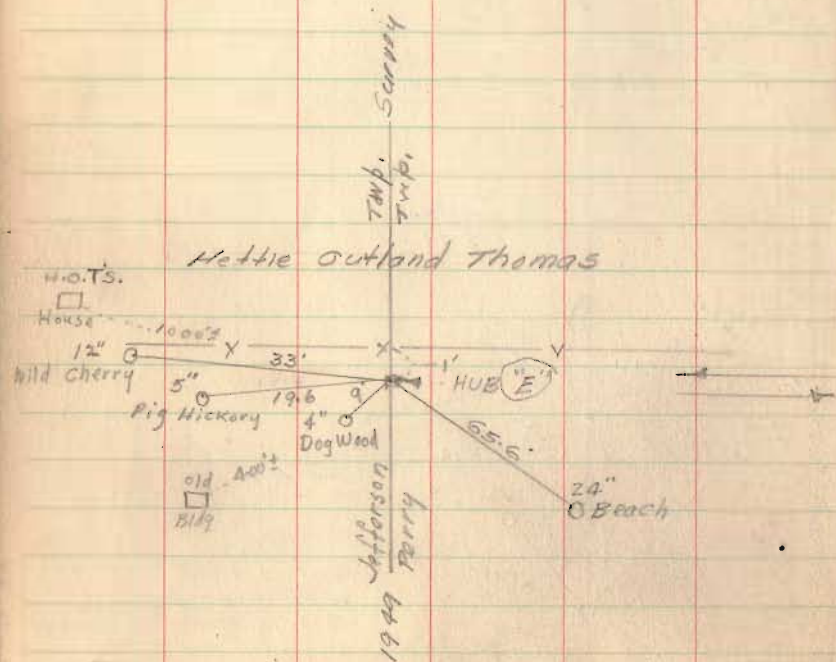


(B) is
Located on S. brow of
Hill near patch of
Black Berries - (large)

INDEXED ON MAP

Jefferson - Perry Twp. Line 1949

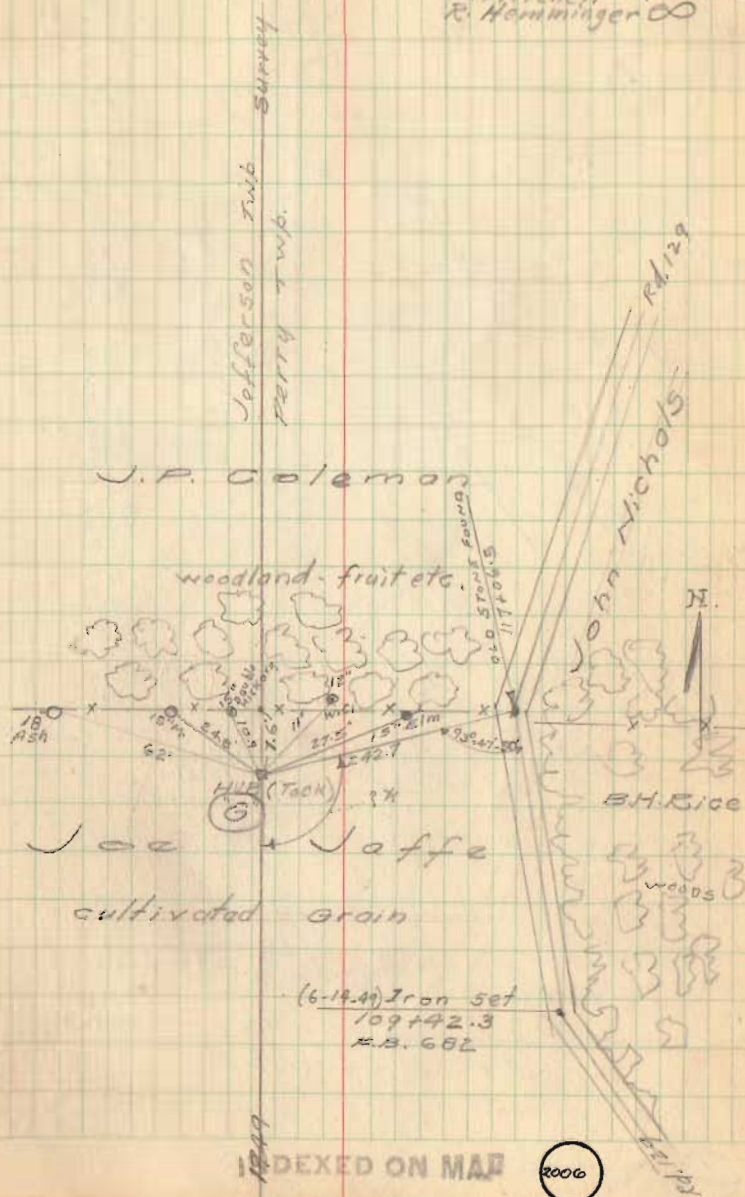
SEE F.D. 682 - pg. 7 - forward for Survey
Road 129 - 1949.



INDEXED ON MAP

August - 1949
 W. Lloyd
 P. Dodson
 P. Mitchell
 R. Hamming

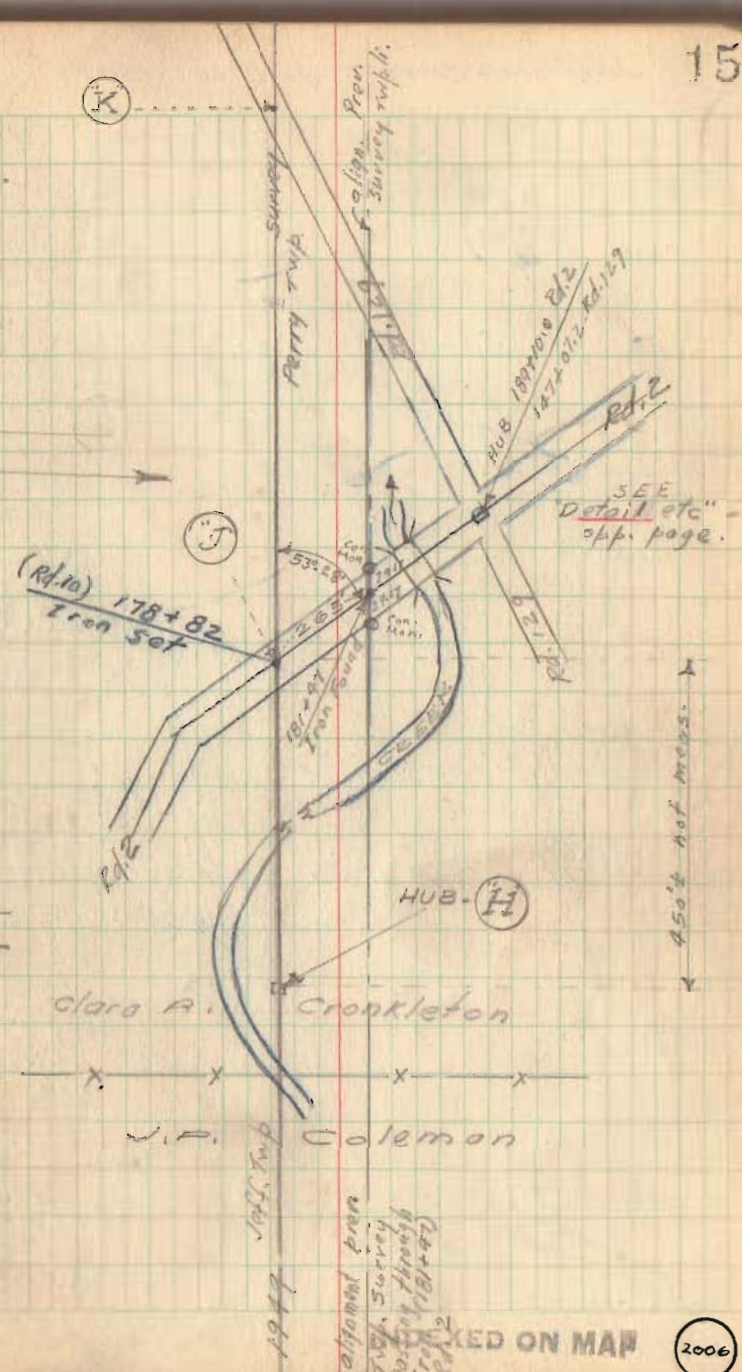
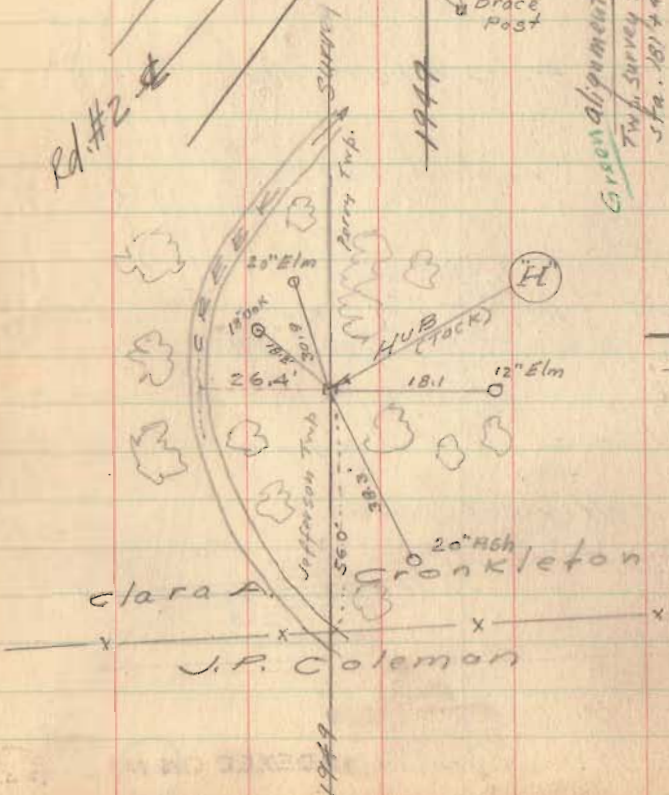
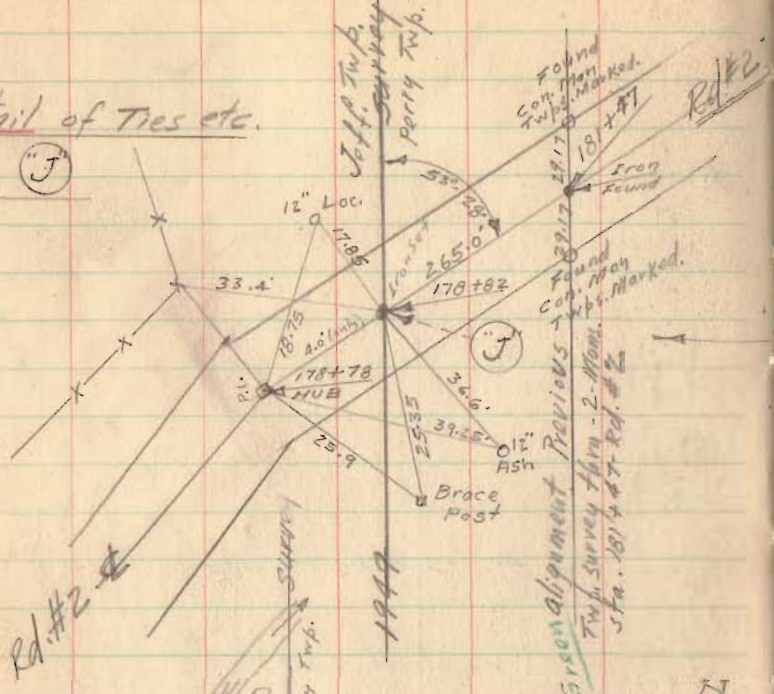
SEE F.B. 682 - pg. 12 - for Sta. 117+06.5 (Rd. 129)



INDEXED ON MAP

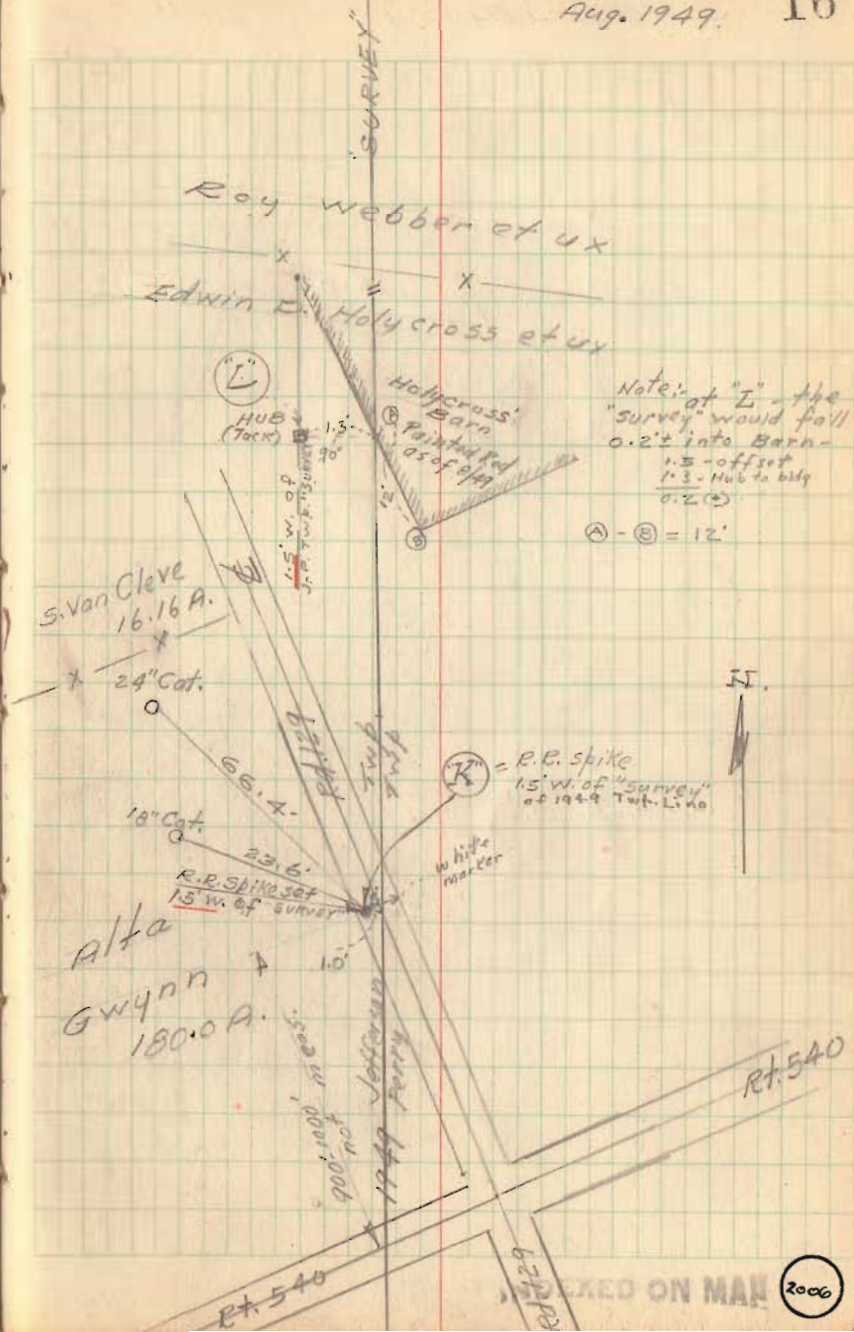
2006

Detail of Ties etc.
at (J)



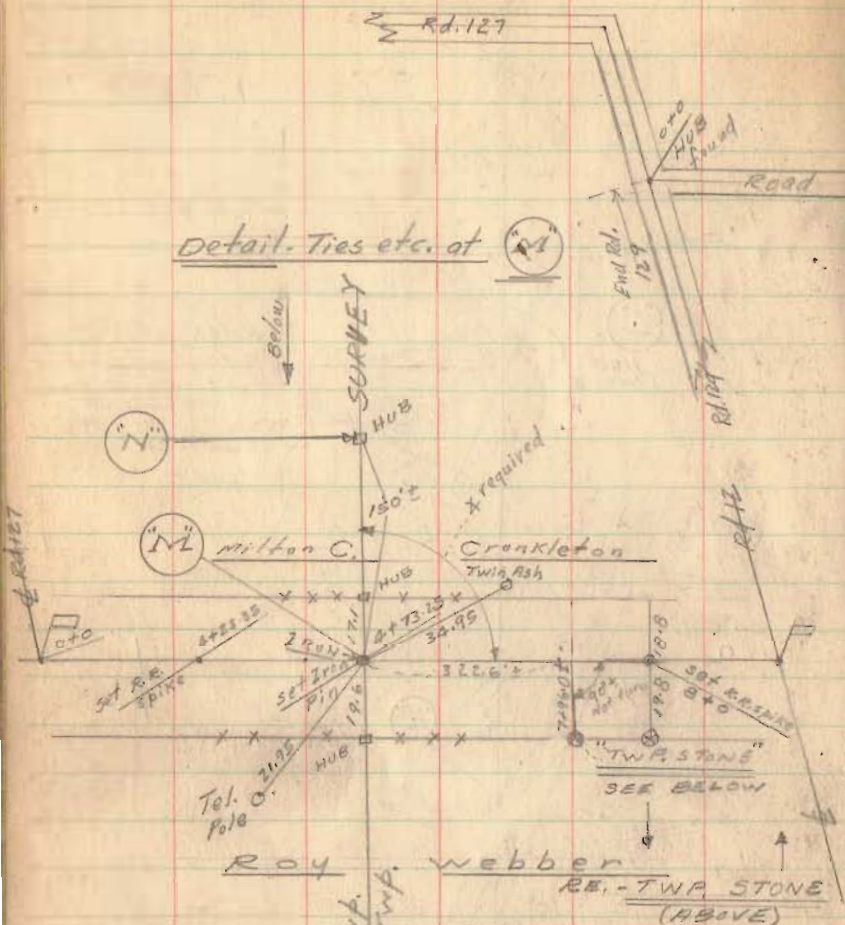
SEE Page 17 for Detail at (L)

Note: "K" set with π at "L" - sighting South to "J"



Jefferson-Perry Twp. Line 1949

Detail. Ties etc. at



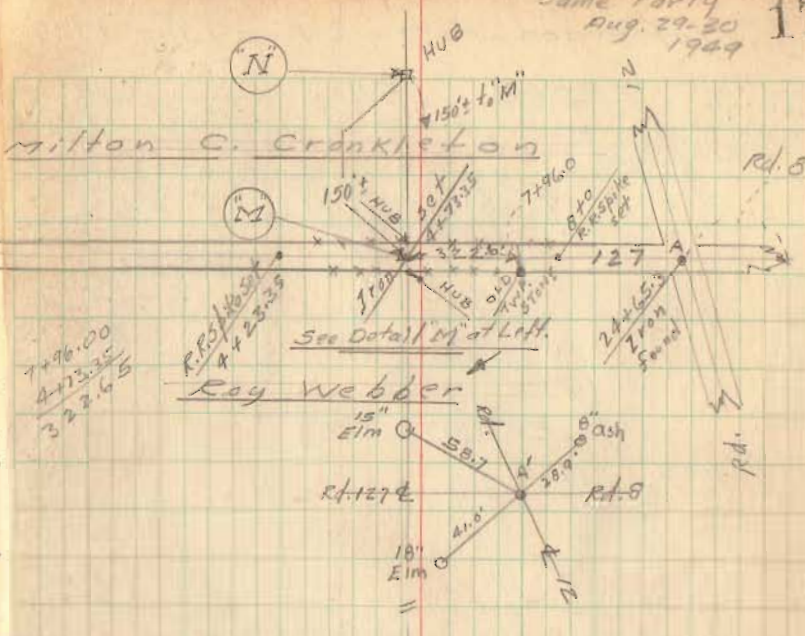
ROY WEBBER
RE. - TWP. STONE
(ABOVE)

This stone sets 10" above ground - is chiseled sharp (sharp with top line) - Messrs. Milton C. Crankleton and Roy Webber identified stone (6-30-49) as being Twp. Stone etc. always in their recollection - Morgan Hand.

Jeff. Twp.
Perry Twp.
1949

Same Party
Aug. 29-30
1949

Milton C. Crankleton

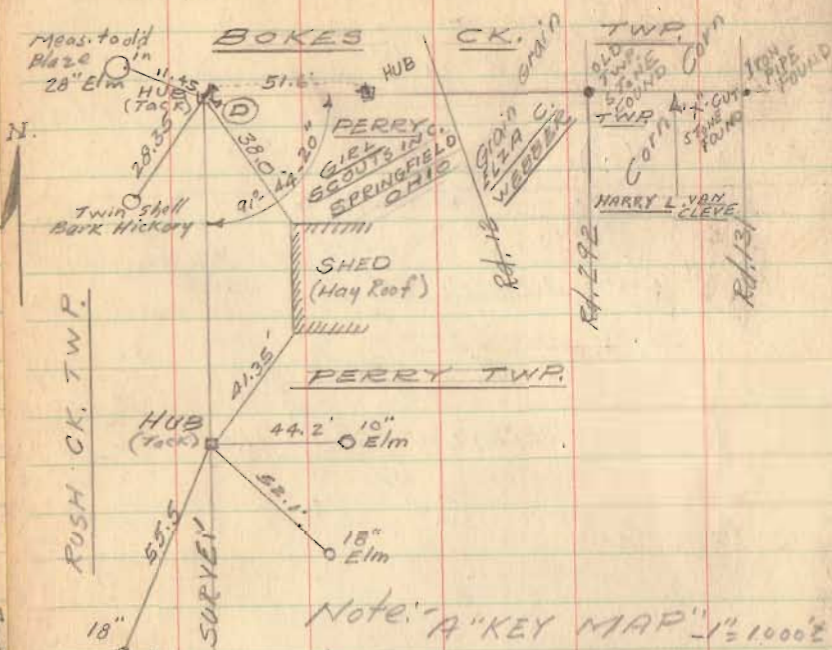


EDWIN D. HALYCROSS

"L"

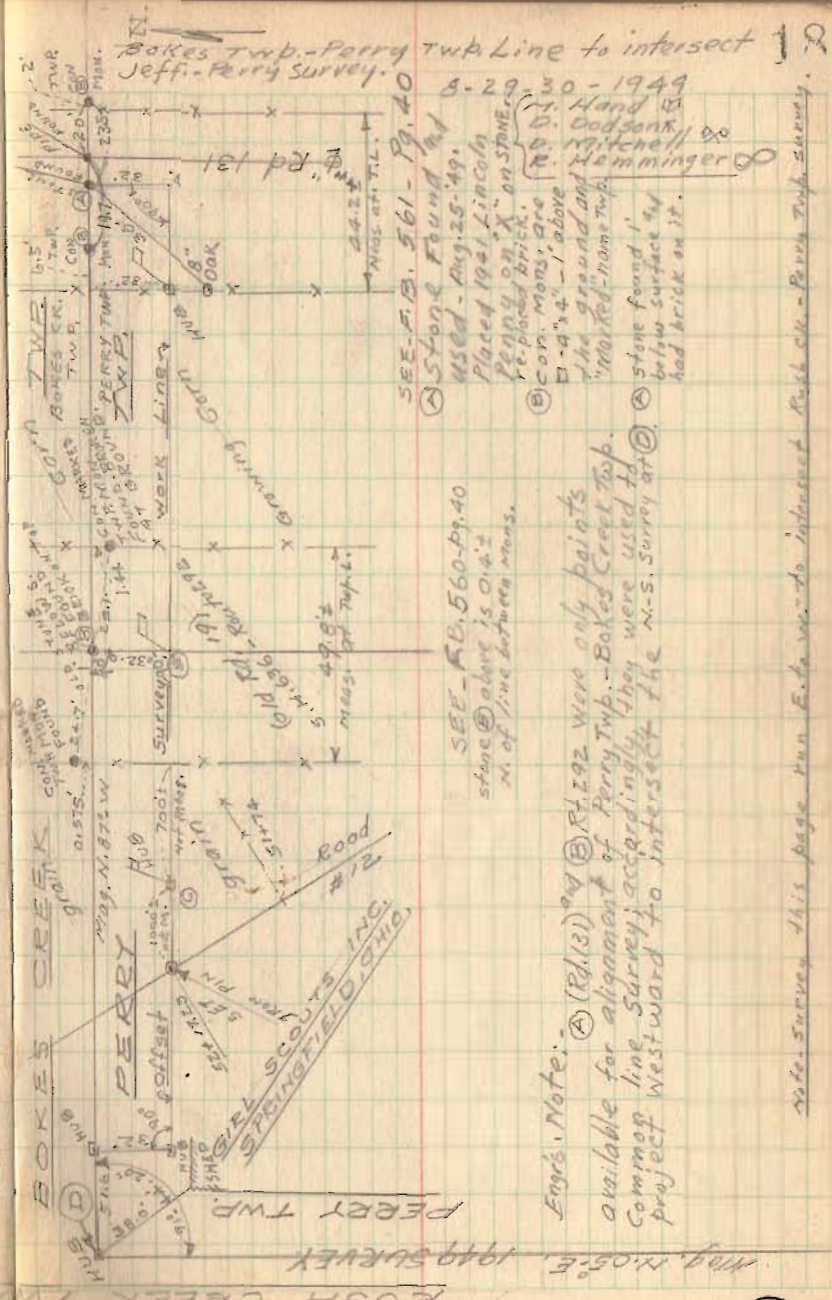
1949
Jeff.
Perry

Jefferson - Perry Twp. Line 1949



Note: A "KEY MAP" 1" = 1000'
 Was made of Survey - see Files - as a work sheet.
 N-S alignment had E-W (pg. 12) determined by double-centering - heavy precision π used. Large #. used. Large
 (D) Geodetic Survey "targets" used - some shots being 2 miles \pm in length. M.H.

P.S. The relative accuracy of N.S. line was greatly aided by having the same interested party persons throughout the survey. M.H.



SEE P.B. 561 - Pg. 40
 Stone Found by 8-29-30-1949
 Used - Aug. 25-49.
 Placed 1941 Lincoln Perry on "X" on stone.
 (C) con. Mon. are re-placed brick. D. 4" x 4" - 1' above the ground and marked - name top.
 Stone found 1' below surface of had brick on it.

SEE - P.B. 560 - Pg. 40
 stone above is 0.14' N. of line between mans.

Eng's. Note: (A) (Rt. 131) and (B) (Rt. 122) were only points available for alignment of Perry Twp. - Bokes Creek Twp. Common line Survey, accordingly they were used to project westward to intersect the N-S Survey at (C).

Note: Survey this page two E. to west to intersect Bokes Creek - Perry Twp. survey.