

FB 699

Proposed Relocation C.H. # 48

~~Rushcreek~~ Twp.
Rushcreek

V.M.S. 13190 & 13200

Relocation: Staked 60' wide

C.H. # 48 - 45' wide

D. Daddon
V. Detrick X
T. Richardson

April 29, 1954

70°

14

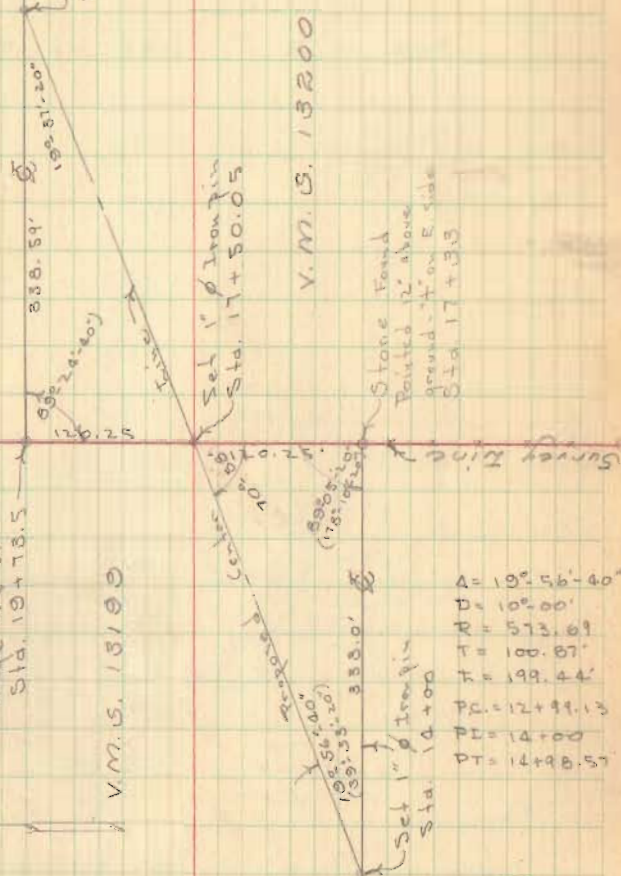
$A = 19^{\circ} 37' 20''$
 $D = 10^{\circ} 00'$
 $R = 573.69'$
 $T = 99.21'$
 $L = 196.21'$
 $PC = 20 + 09.09$
 $PI = 21 + 08.3$
 $PT = 22 + 05.31'$

Stone Found
Flat 2" above 1c
Ridge N 8 S.
Sta. 19 + 78.5

V.M.S. 13190

N

Hub over
Stone
C.H. # 12
Sta. 0 + 00



Set 1" Iron pin
Sta. 21 + 08.3

V.M.S. 13200

Stone Found
Painted 12" above
ground - 4" on E. side
Sta. 17 + 33

$A = 19^{\circ} 56' 40''$
 $D = 10^{\circ} 00'$
 $R = 573.69$
 $T = 100.87'$
 $L = 199.44'$
 $PC = 12 + 99.13$
 $PI = 14 + 00$
 $PT = 14 + 98.57$

2126

INDEXED ON MAP