

FB 701

County Highway #273  
Rushcreek Twp

V.M.S. 3323 - 3326 - 3327

Stakes set 25' right & left  
of  $\pm$  - 50' Right-of-way

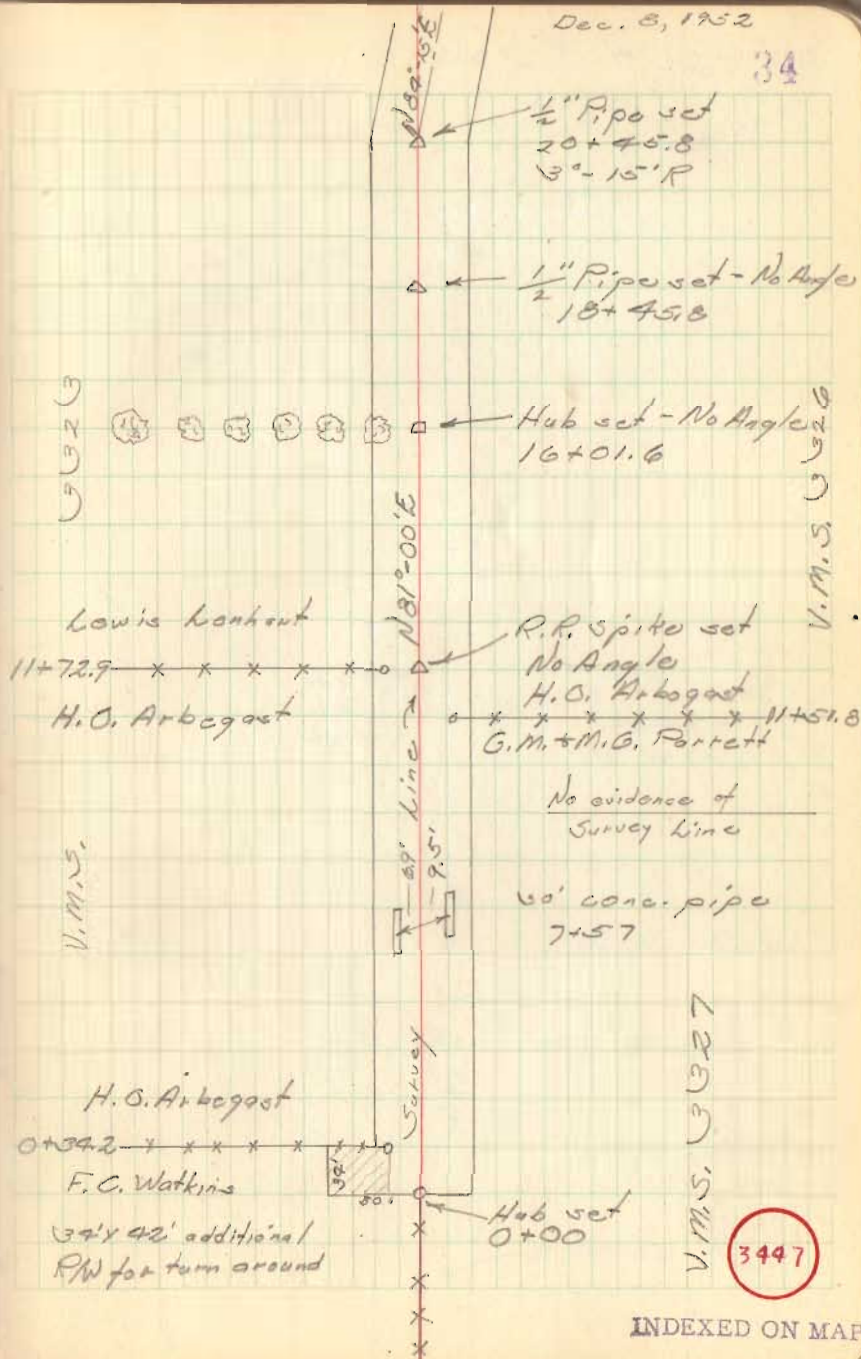
Total length = 0.68 mile

Notes Placed in F.B. #699  
Pages 38 & 39

D.H.O.

Dec. 8, 1952

34

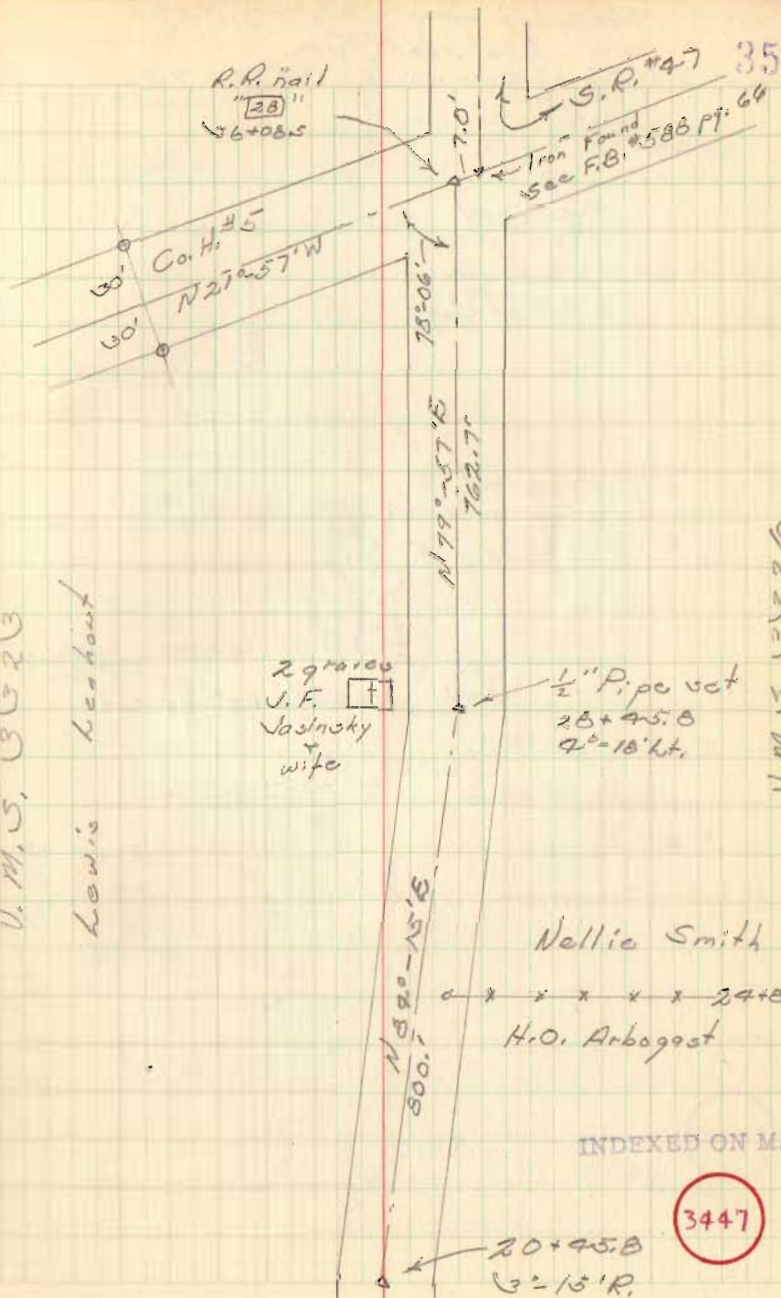


3447

INDEXED ON MAP

C.H. # 273

FB 701



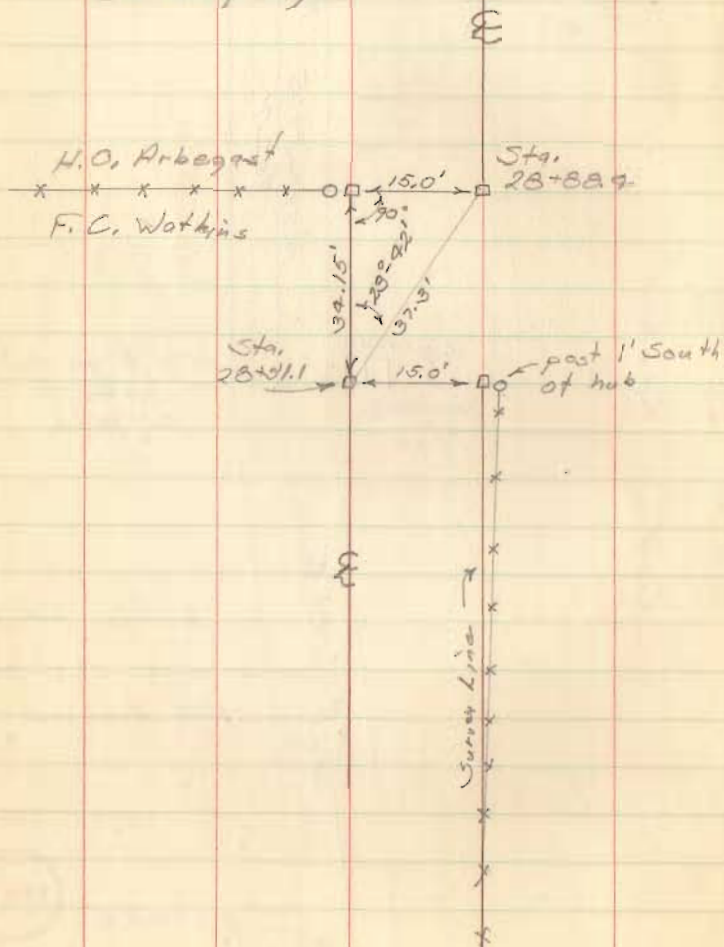


FB 701

Proposed County Highway #273  
Rushcreek Twp.  
V.M.S. 3323-3326-3327-9826

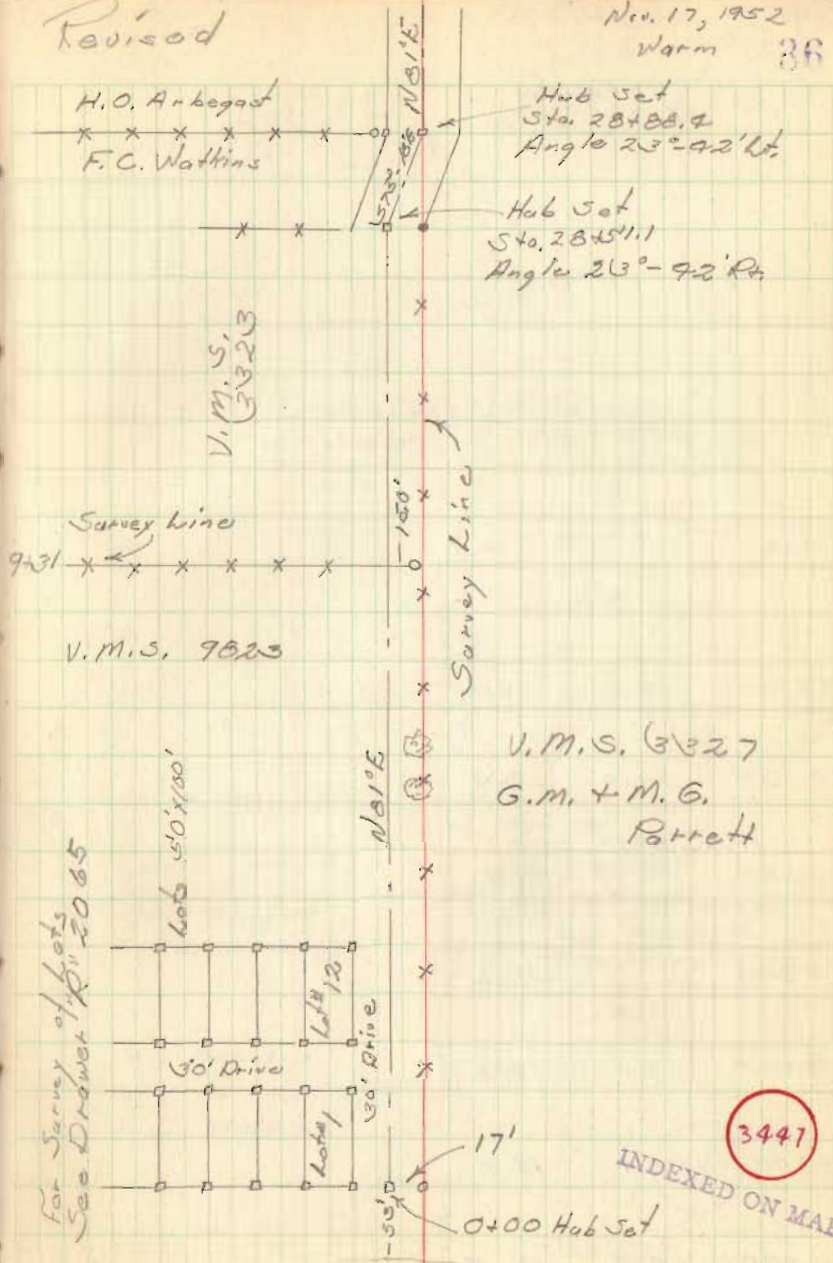
Revised

Detail of "Jag"



Revised

Nov. 17, 1952  
Warm 36



INDEXED ON MAP

3441

124-5.30 H2O level Nov. 20, 1952  
Rushcreek Lake

FB 701

C.H. 273

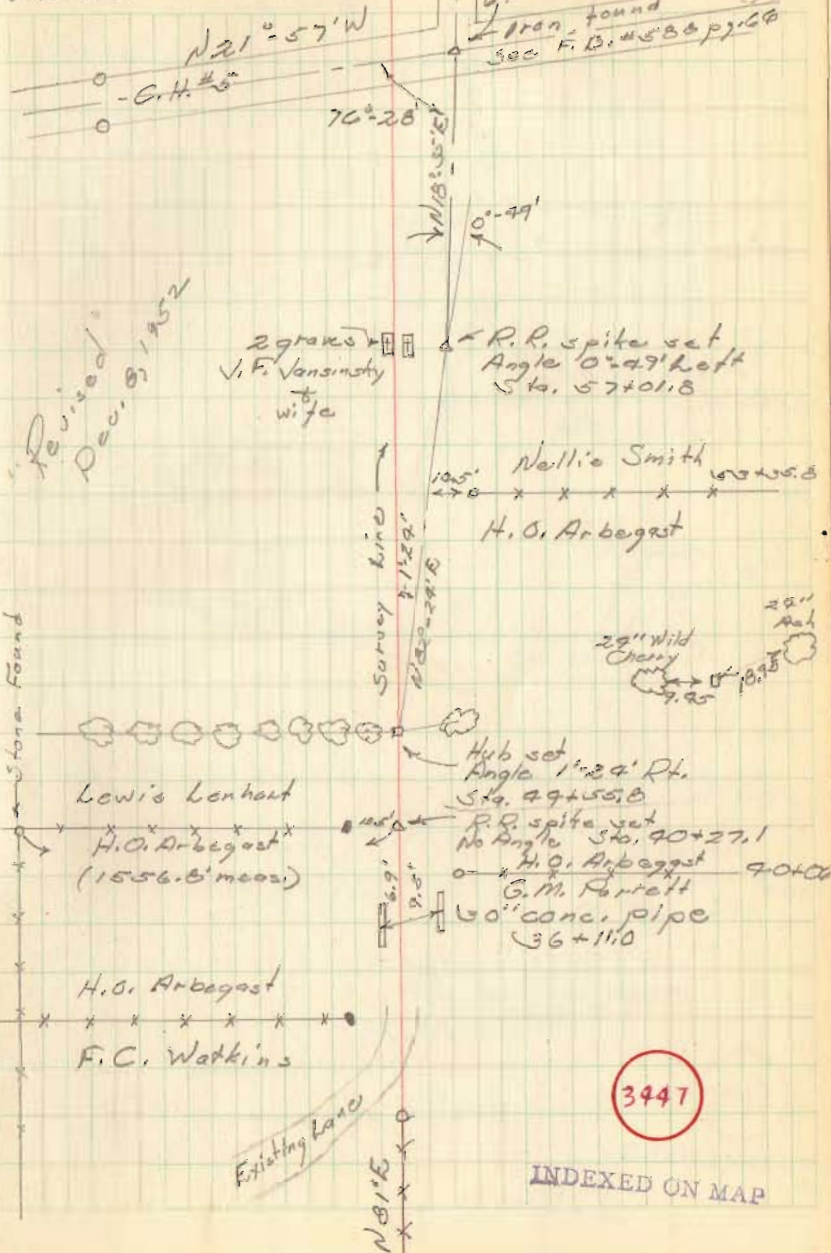
Fences  
L. R.

64+00	18.2	6.1
60+00	14.4	8.3
56+00		11.4
50+00		11.7
44+00	5.1	18.3
38+00	8.1	16.9
34+00	8.2	16.4

D. Dodson  
G. Wilgus  
V. Detrick

Nov. 18, 1952

Sta. 64+2.2 Windy  
Iron found  
Sec. F.D. 588 pp. 28



3447

INDEXED ON MAP



FB 701 C.H. # 275

Dec. 8, 1952  
Rain

R.R. nail  
"4"

Sta. 69+62.7

Iron found  
See F.B. #288 pg. 66

38

