

Survey Rd 110 from

S. H. 593 (Route 273) North to Co. line  
See FB 552, pg. 28-30 for old survey

Staked 50' by order of  
Rushcreek Twp. Trustees

22+28.4 Hubs set for R/W Men

16+00 Hubs set for R/W Men

11+03.7 Hubs set for R/W Men

6+00 Hubs set for R/W Men

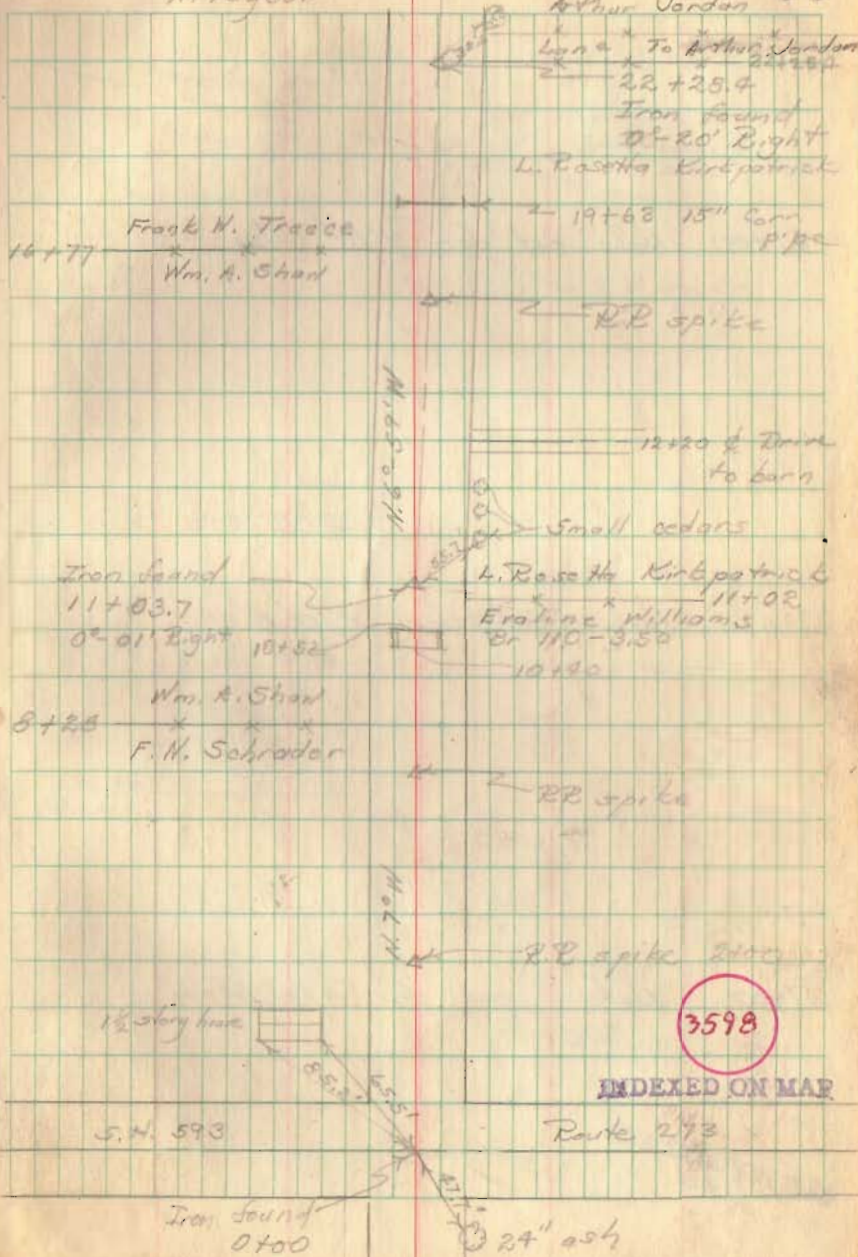
2+00 Hubs set for R/W Men

Party: S. Keyser  
D. Johnson  
N. Keyser

Apr. 15, 1948  
Fair - warm

Arthur Jordan

30



Rd 110 (contd)

41+00 Hubs set for P/W Mon.

33+47.0 Hubs set for P/W Mon.

27+00 Hubs set for P/W Mon.

22+28.4

15 Apr. 98

39

