

FB 685

ROAD #5

(RUSH CREEK TWP)
From Rd #51 N. to HARDIN CO. line.

Staked 60' R/W

19+00 Hubs set for R/W Mon.

18+00 Hubs set for R/W Mon.

14+00 Hubs set R/W Mon.

8+00 Hubs set for R/W Mon.

Note:

This & Spike Record - Vol. 3, Pg. 77 = 4°-10' (L) (1873)

7+00 Hubs set for R/W Mon.

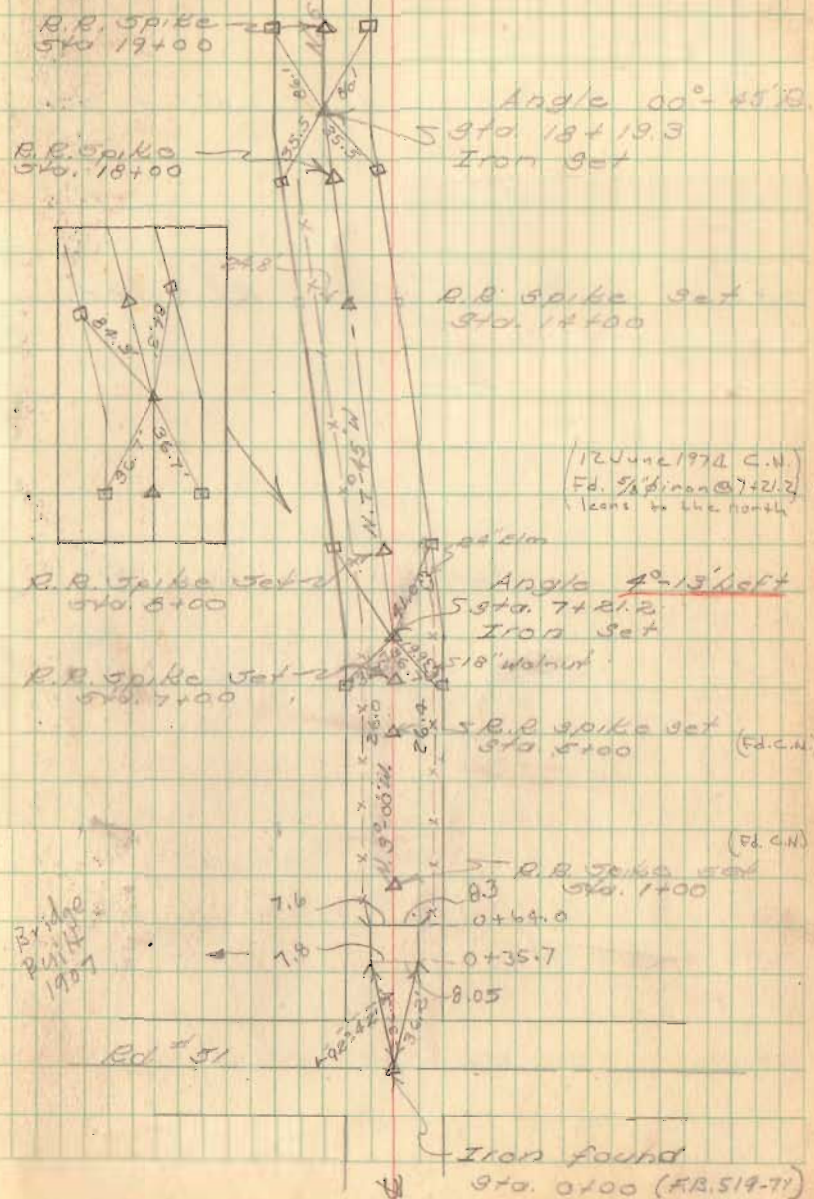
**Note:- Monuments set
Sept. 1950.**

1+00 Hubs set for R/W Mon.

4386

INDEXED ON MAP

12/12/49 cloudy
M. Hand & Rain
D. Dodson
V. Patrick 46



12 June 1972 C.N.
Fd. 5/8" iron @ 7+21.2
looks to the north

R. B. Spike
put in
1907

Rd #51

Iron found
Sta. 0+00 (R.B. 519-71)

FB 685

Road No 5 (contd.)

47+00 Hubs Set R/W Mon

43+00 Hubs Set R/W Mon.

39+00 Hubs Set for R/W Mon.

35+00 Hubs Set R/W Mon

33+00 Hubs Set for R/W Mon.

31+00 Hubs Set for R/W Mon.

25+00 Hubs Set R/W Mon

20+00 Hubs Set R/W Mon

Party
M. Hand *
D. Dodson 10.00
V. Detrick 9.00

12/14/49

Cold
12°

47

R.R. spike 47+00

R.R. spike 43+00

Guard Rail 41+49.2

Conc. Culvert 539+93

R.R. Spike

Sta. 39+00

R.R. spike 35+00

R.R. Spike Sta

57A 33+93.65

S.H. # 593

Route # 273

Found Harry

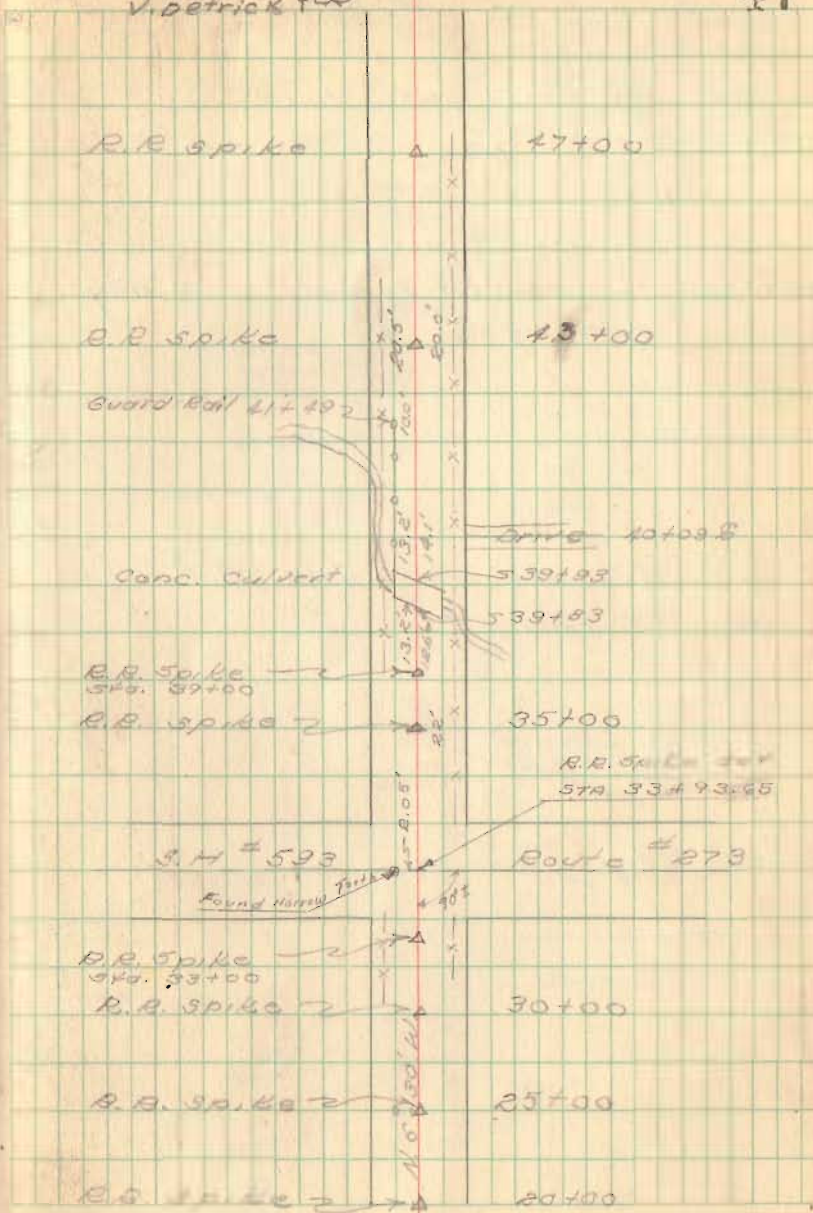
R.R. Spike

Sta. 33+00

R.R. spike 30+00

R.R. spike 25+00

R.R. spike 20+00



FB 685

Road No. 5 (cont'd)

67400 RR spike set Hubs set

Hub - 30' from line 30' E 1/4 m

Hub - 30' from line 30' E 1/4 m

Hub - 30' from line ? S-E

65+34.35 Hub set (set by hand) No angles

61400 RR spike set Hubs set

57400 RR spike set

52400 RR spike set

Party: C. Keyser
D. Dodson
P. Squith
E. Humminger

Sep. 7, 1950

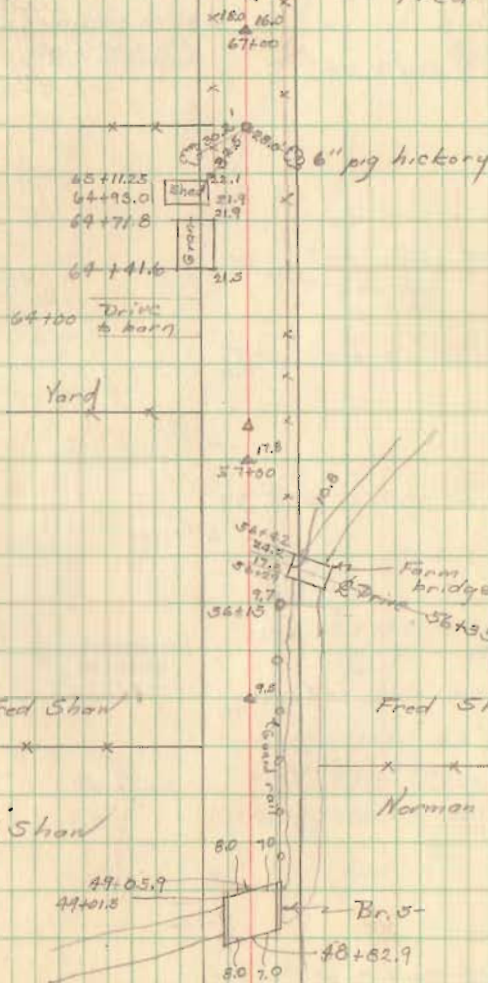
Ed. H. Shaw 48

Ed. H. Shaw

Survey Line ?

Fred Shaw 19.5'

Sta 68+01.0
Stone found in
line with survey
line, center of stone
0.4' West of iron
set on E. of Rd.
Angle 0° 24' 10" by
Fred Shaw



Fred Shaw

51+37.0

W. A. Shaw

Fred Shaw

51+18.5

Norman Dye

Br. 5

48+62.9

FB 685

Rd #5 (contd)

85+73.55 5/8" Iron bar set on County Line
R/W Mon. set at 30.00'

Iron bar replaced with Resurvey
Monument 8" below surface

PT 84+55.9 RR spike set May 21, 1951

PI 83+00

PC 81+44.6 RR spike set

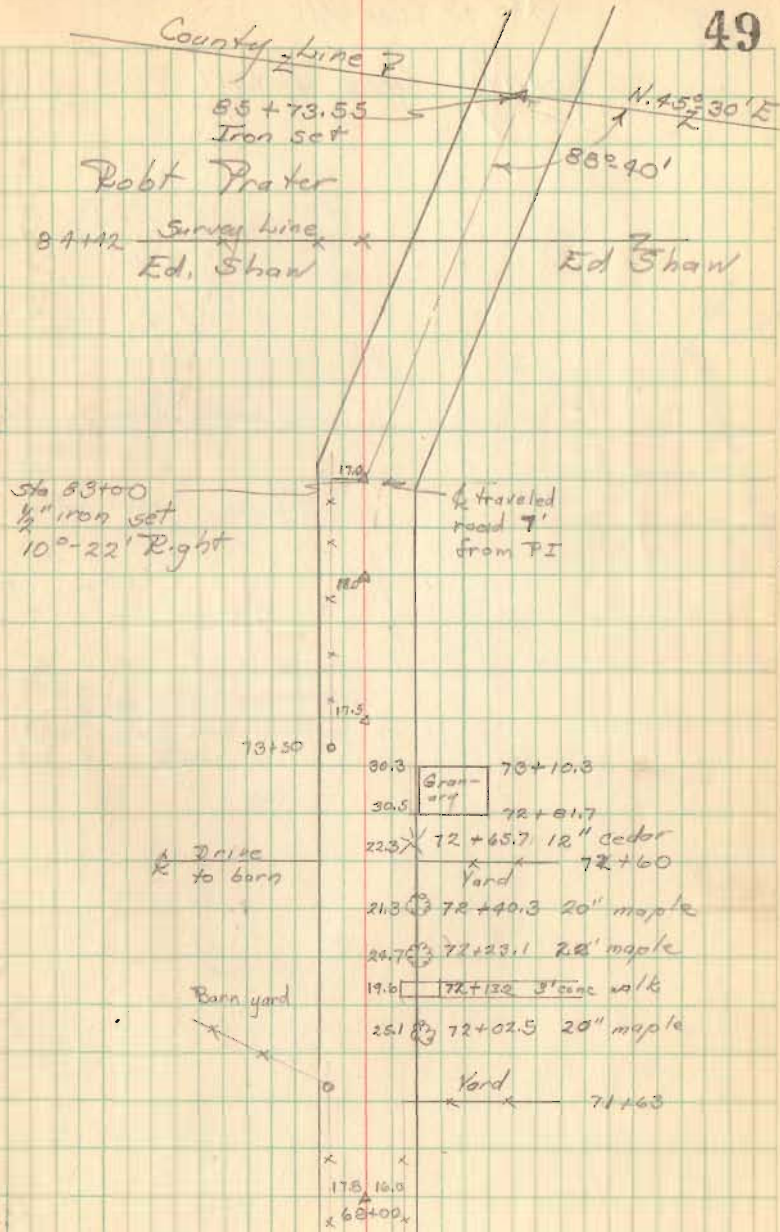
78+00 RR spike set

74+00 RR spike set

69+00 RR spike set

Sep. 7, 1950

49



Dd #5 (contd)
 County Line Detail

85+73.85

