

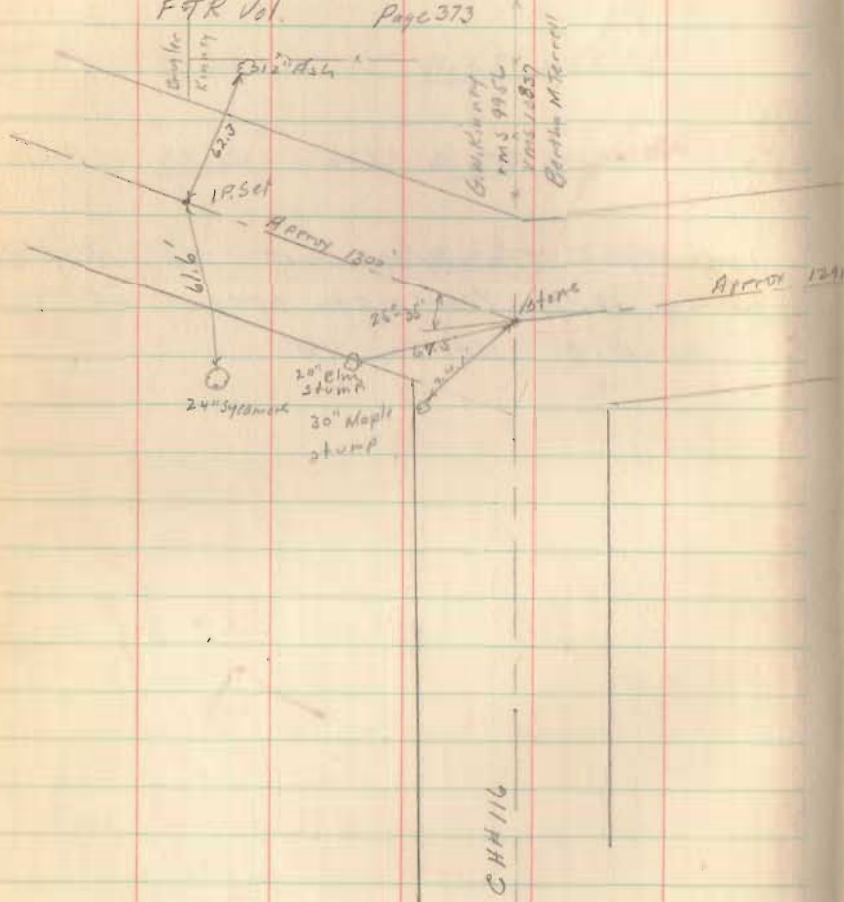
County Highway No. 12 - Stokes Set for Fence - G.W. Kinney

Rushcreek Township

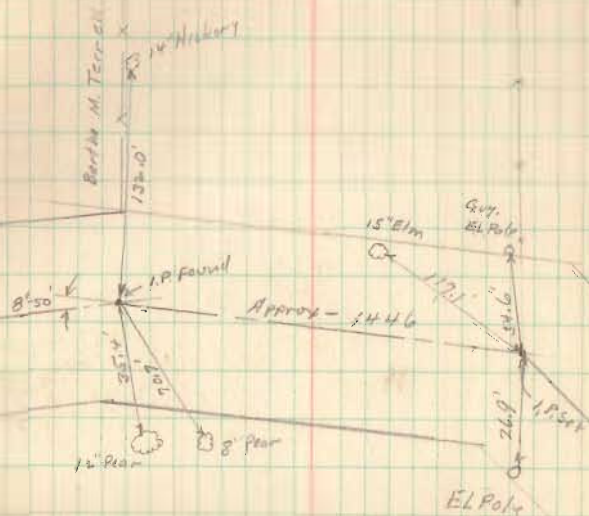
V.M.S. 9956 - V.M.S. 10837

Width 48' - Big Springs Pike - 1885

F&R Vol. Page 373



April 30 1942
E.W. Carl
R.H. Reed
C. Milligan



INDEXED ON MAP

4421