

Received 10-14-88



**LESLIE H. GEESLIN**  
REGISTERED SURVEYOR NO. 5248  
P. O. BOX 274  
RUSHSVLVANIA, OHIO 43347

INDEXED ON MAP  
4502 ID

TELEPHONE: (513) 468-2793

OVERTURF SURVEY  
October, 1988

*Leslie H. Geeslin*  
LESLIE H. GEESLIN  
RUSHSVLVANIA, OHIO

The following described real estate situated in the State of Ohio, Township of Rushcreek, V.M.S. 9955, and more particularly described as follows:

Beginning at a railroad spike found in the centerline of State Route 274 at the southeast corner of John M. Overturf's 0.918 acre tract as described in D. B. Vol. 409, Page 88.

Thence with said Overturf's east line N. 49° 48' W. (This bearing was taken from D. B. Vol. 409 Page 88 and all other bearings are from angles and distances measured in this field survey) 200.00 feet to a 0.625 inch iron bar found, passing a 0.625 inch iron bar found at 30.00 feet.

Thence with said Overturf's north line S. 40° 12' W. 200.00 feet to a 0.625 inch iron bar found at the southeast corner of Charles J. Stanford's 0.71 acre tract as described in D.B. Vol. 280 Page 555.

Thence with said Stanford's east line N. 49° 48' W. 100.00 feet to a 0.625 inch iron bar found.

Thence N. 40° 12' E. 250.00 feet to a 0.625 inch iron bar set.

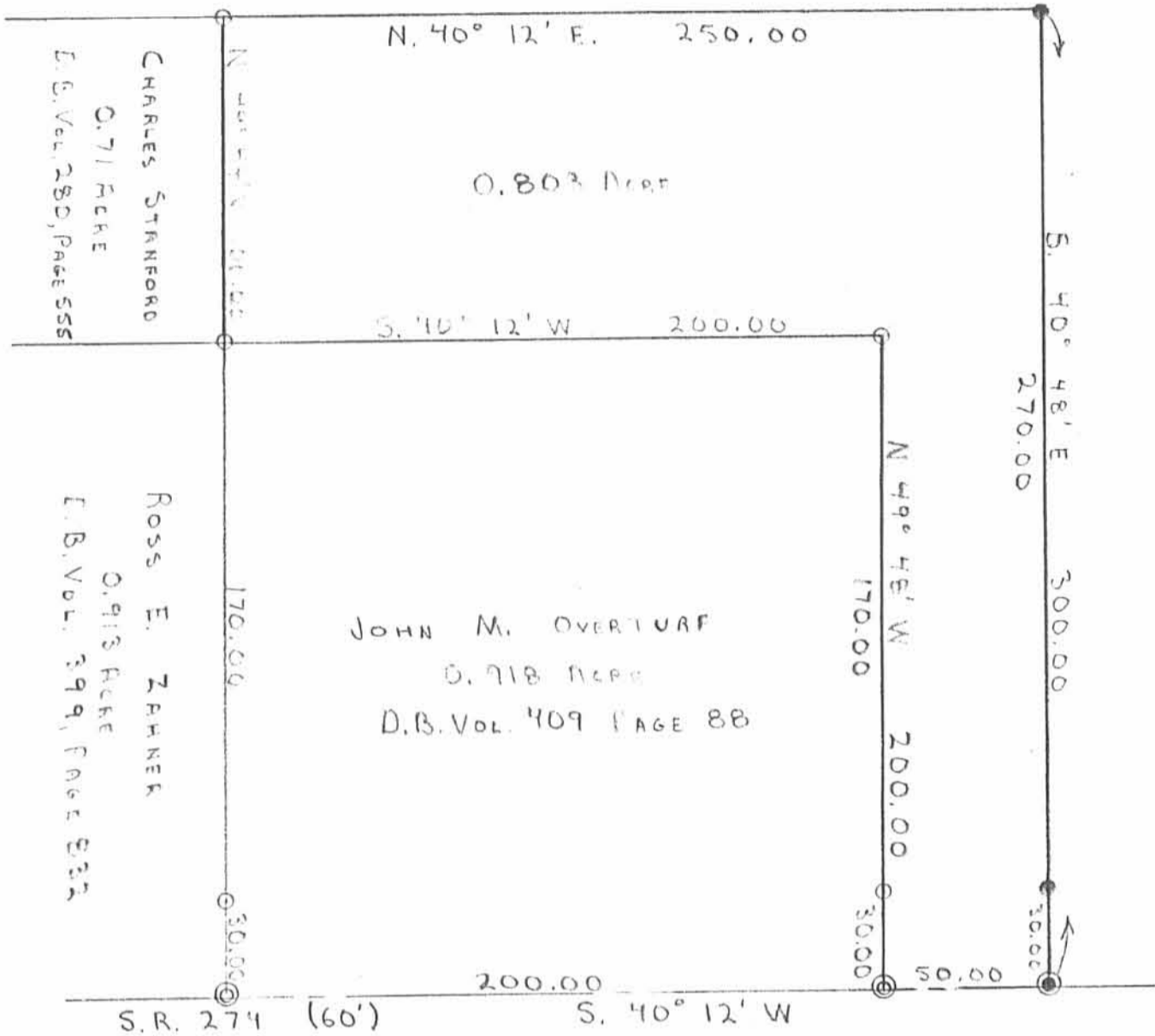
Thence S. 40° 48' E. 300.00 feet to a railroad spike set in the centerline of State Route 274, passing a iron bar set at 170.00 feet.

Thence with said centerline S. 40° 12' W 50.00 feet to the place of beginning.

Containing 0.803 acre more or less.

The above described 0.803 acre tract being on the south side of Charles J. Stanford's 19.38 acre tract as described in D.B. Vol. 280, Page 555.

CHARLES J. STANFORD  
 16.135 ACRES  
 D.B. VOL. 280, PAGE 555



JOHN M. OVERTURF  
 0.918 ACRES  
 D.B. VOL. 409 PAGE 88

CHARLES STANFORD  
 0.71 ACRES  
 E.S. VOL. 280, PAGE 555

ROSS E. ZAHNER  
 0.918 ACRES  
 E.S. VOL. 399, PAGE 532

SURVEY OF A 0.803 ACRE TRACT  
 IN V.M.S. 1955, RUSHCREEK TWP.,  
 LOGAN COUNTY, OHIO.  
 FOR JOHN M. OVERTURF, OCTOBER, 1988

- LEGEND:
- ⊙ = R.R. SPIKE F.D.
  - = 5/8" IRON PIN F.D.
  - ⊗ = R.R. SPIKE SET
  - = 5/8" IRON PIN SET



*Leslie H. Geeslin*

D.L.G

INDEXED ON MAP  
 4502 1P



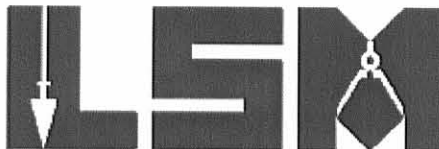
APPROVED

# Lee Surveying and Mapping Co., Inc.

12-13-12

Land Surveys • Topography • Subdivisions • Construction Layout

117 N. Madriver St.  
Bellefontaine OH 43311



Phone: (937) 593-7335  
Fax: (937) 593-7444  
surveys@lsminc.us

## ROBINSON 3.429 ACRES

Lying in Virginia Military Survey 9955, Rushcreek Township, Logan County, Ohio.

Being out of the Mark A. Robinson 19.23 acre tract as deeded and described in Official Record 492, Page 393 of the Logan County Records of Deeds and being more particularly described as follows:

Beginning at a MAG nail set on the center-line of Ohio Route 274 (60 feet wide) at station 451+29.5 per Logan County Engineer's Highway plan "X-9".

THENCE, with the center-line of Ohio Route 274, S 41°-58'-00"W, a distance of 113.38 feet to a MAG nail set.

THENCE, N 48°-02'-00"W, a distance of 287.11 feet to a 5/8 inch iron rod set, passing a 5/8 inch iron rod set at 30.00 feet.

THENCE, N 42°-15'-30"E, a distance of 452.50 feet to a 5/8 inch iron rod set.

THENCE, with the south line of the Darren S. Humphries 17.853 acre tract (O.R. 307, Pg. 947), S 73°-35'-11"E, a distance of 318.37 feet to a railroad spike found, passing a 5/8 inch iron rod set at 285.04 feet.

THENCE, with the center-line of Ohio Route 274, S 42°-15'-30"W, a distance of 476.45 feet to the point of beginning.

Containing 3.429 acres of which 0.401 acre is within the highway right-of-way.

Property is subject to any and all previous easements and rights-of-way of record.

The basis for bearings is the center-line of Ohio Route, being S 41°-58'-00"W, and all other bearings are from angles and distances measured in a field survey by Lee Surveying and Mapping Co., Inc. on December 6, 2012.

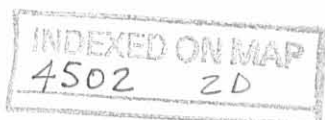
Description prepared by:



*William K. Bruce*

William K. Bruce  
Professional Surveyor 7437  
December 6, 2012

L-5442



**APPROVED**

12-13-12

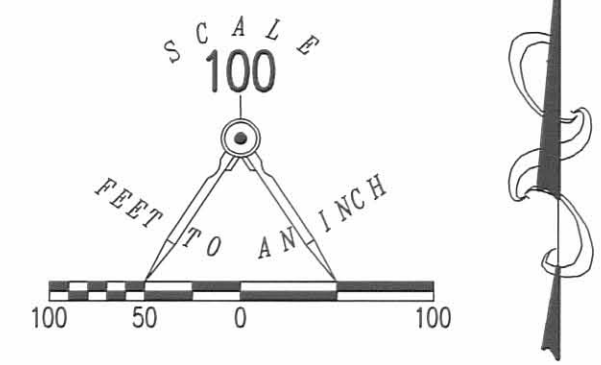
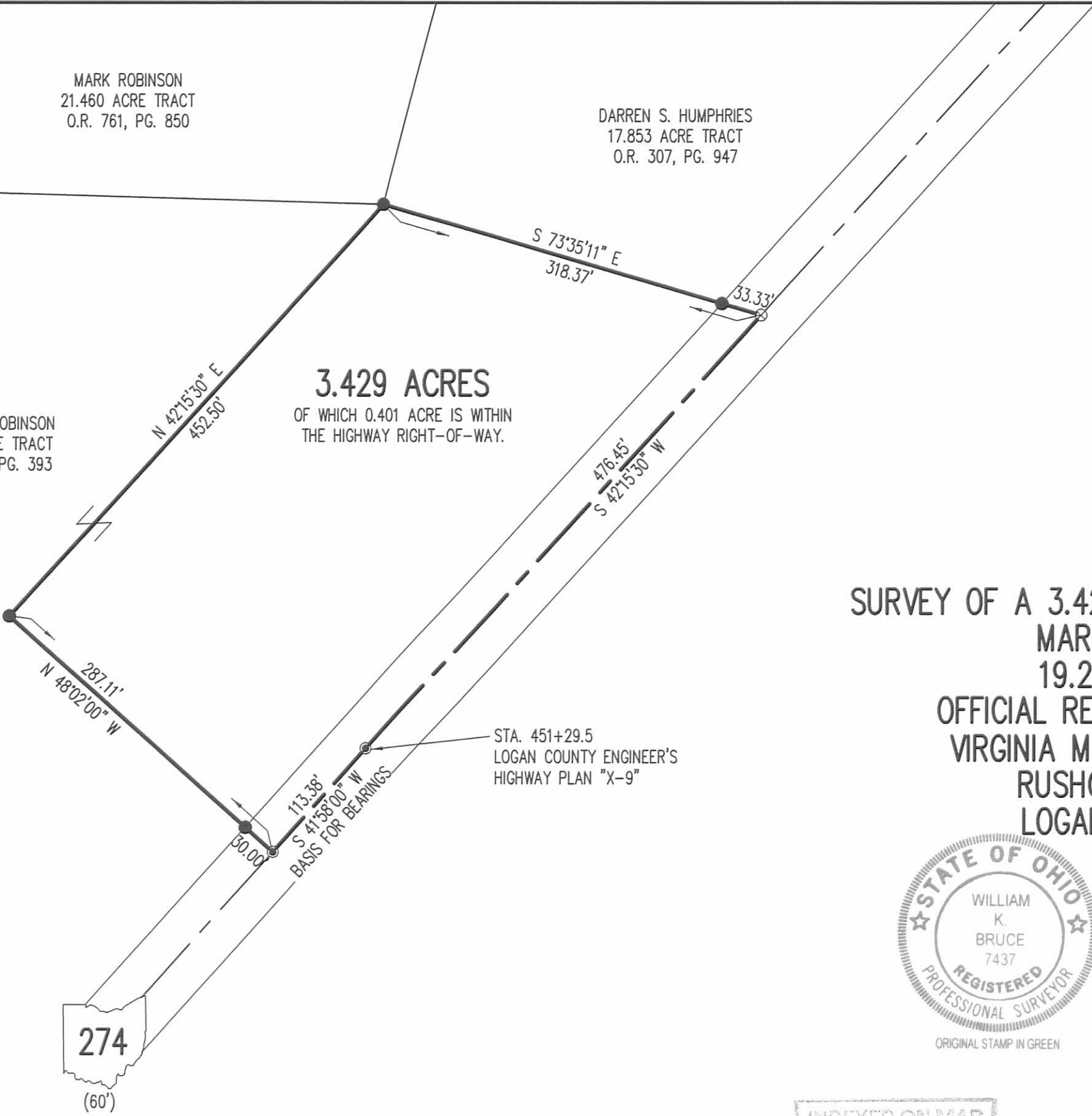
MARK ROBINSON  
21.460 ACRE TRACT  
O.R. 761, PG. 850

DARREN S. HUMPHRIES  
17.853 ACRE TRACT  
O.R. 307, PG. 947

MARK A. ROBINSON  
19.23 ACRE TRACT  
O.R. 492, PG. 393

**3.429 ACRES**

OF WHICH 0.401 ACRE IS WITHIN  
THE HIGHWAY RIGHT-OF-WAY.



**SURVEY OF A 3.429 ACRE TRACT OUT OF THE  
MARK A. ROBINSON  
19.23 ACRE TRACT  
OFFICIAL RECORD 492, PAGE. 393  
VIRGINIA MILITARY SURVEY 9955  
RUSHCREEK TOWNSHIP  
LOGAN COUNTY, OHIO**

SURVEYED BY:  
*William K. Bruce*  
WILLIAM K. BRUCE  
PROFESSIONAL SURVEYOR 7437  
DECEMBER 6, 2012



COPYRIGHT 2012 BY:  
**LEE SURVEYING & MAPPING CO., INC.**  
117 North Madriver Street  
BELLEFONTAINE, OHIO 43311  
(937) 593-7335  
WWW.LSMINC.US  
surveys@lsminc.us  
ADW D1112 54421112 L-5442-3

INDEXED ON MAP  
4502 2P

2 WORKING DAYS  
**BEFORE YOU DIG**  
CALL TOLL FREE **800-362-2764**  
OHIO UTILITIES PROTECTION SERVICE

ROBINSON SURVEY

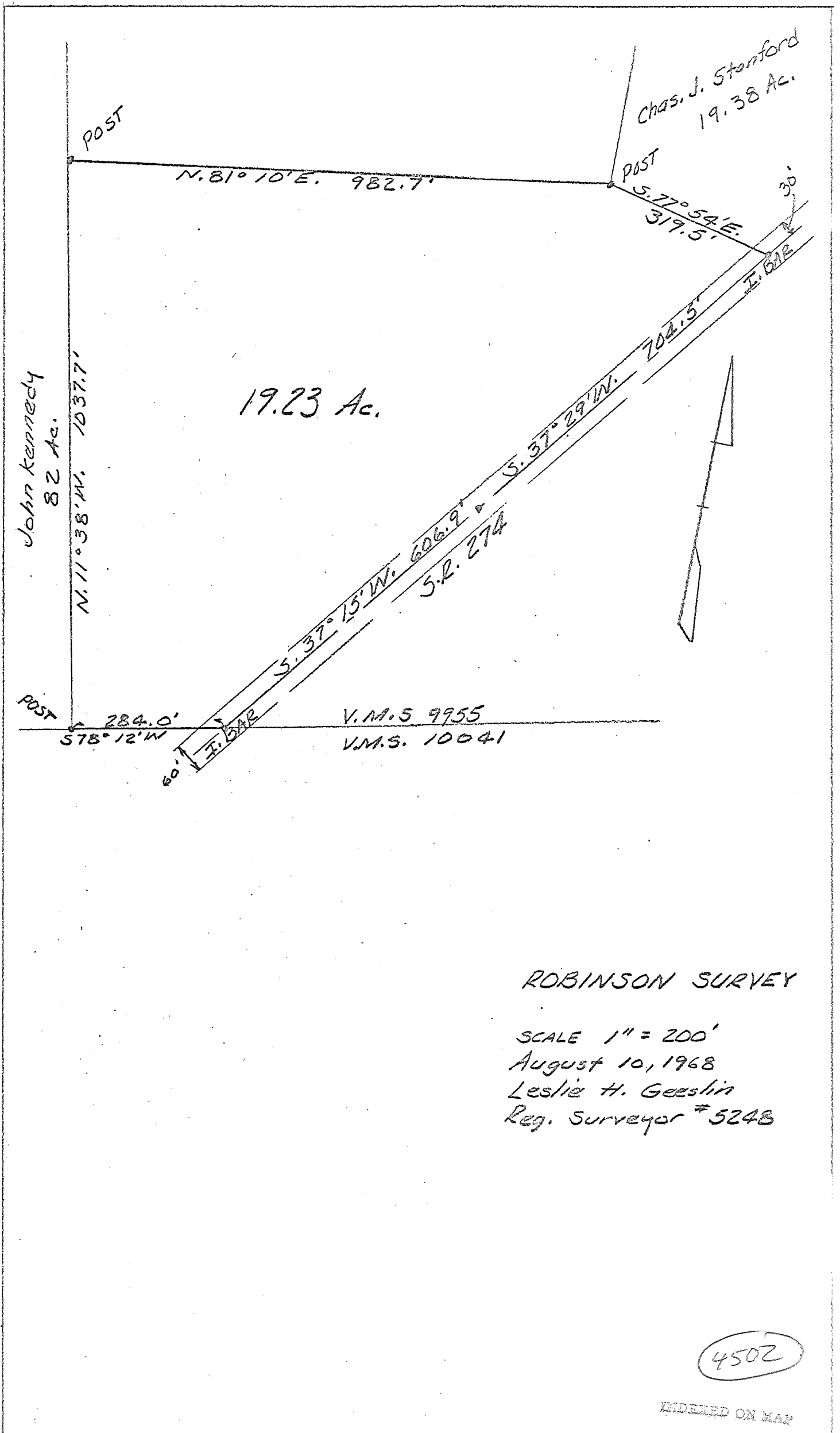
August 10, 1968

The following described real estate, situated in V.M.S. 9955, Rushcreek Township, Logan County, Ohio and being more particularly described as follows:

Beginning at an iron bar where the southerly line of V.M.S. 9955 intersects the centerline of S.R. 274; thence with said southerly line of V.M.S. 9955 S. 78° 12' W., 284.0' to a post, said post being the southeast corner of John Kennedy's 82 acre tract; thence with said Kennedy's east line N. 11° 38' W., 1037.7' to a post; thence N. 81° 10' E., 982.7' to a post, said post being the southwest corner of Charles J. Stanford's 19.38 acre tract; thence with said Stanford's south line S. 77° 54' E., 319.5' to an iron bar in the centerline of S.R. 274; thence with said centerline S. 37° 29' W., 704.5' to a point; thence with said centerline S. 37° 15' W., 606.9' to the place of beginning.

Containing 19.23 Acres, more or less.

The above described 19.23 Acres being on the southerly side of Foster A. and Leona C. Robinson's 40.69 acre tract as described in D.B. 179, Page 177 of the Logan County Recorder's Office.



John Kennedy  
82 Ac.  
N. 11° 38' W. 1037.7'

Chas. J. Stanford  
19.38 Ac.

19.23 Ac.

POST  
N. 81° 10' E. 982.7'

POST  
S. 77° 54' E.  
319.5'

30'

I. BAR

704.5'

S. 37° 29' W.

S. 37° 15' W. 606.9'

S. 2. 274

POST  
284.0'  
S 78° 12' W

V.M.S. 9955  
V.M.S. 10041



ROBINSON SURVEY

SCALE 1" = 200'

August 10, 1968

Leslie H. Geeslin

Reg. Surveyor # 5248

4502

INDEXED ON MAP