

30 per inch

SW Spore house N 65 D 94

Harper

B & I R R N 44 W

McDowell  
A 682

Anslay

4768 IP

INDEXED ON MAP

Dan No 9885

(Arbit.) Computations for Plot  
A 108.62  
B Shoots to Madison Musshelman

Sayford

Old day line  
A 15 S 102 W

N 80 E 106. (141.5)

A 164.57

a c e x f g h = A 5595

B Shoots to Musshelman  
Musshelman

a b c d = A 51.90

Stampfield

N 92 W 76.5

B 14 N 30 D 14

Computation

Yancy No 9321



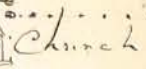
B McDowell  
N 80 W 80. 59 1/2

N 15 W

N 94 W 77

Silverland

Northwood road



Church  
Roberts

John Dickey sells to Benj. Shoots  
Survey made 26<sup>th</sup> Nov., 1858  
J. W. M. Langhlin

Description of J. J. Shoats land located in  
 Virginia Military Surveys # 3321-9885 and # 10178-<sup>10700</sup>  
 in Buchanan Township, Logan Co. Ohio, <sup>beginning of</sup>  
 Beginning at a post in the center of the Buchanan  
 and Yanceyfield roads. Thence  $S 133^{\circ} E 141.4$  Poles  
 with said Yanceyfield road to the North line of the  
 Tidman land and in the Tidman Township road,  
 and crossing the north line of Survey 3321 at 67  
 poles, and 017 1/2 poles west of the North East corner of  
 said Tidman land and Tidman's North line  $S 80^{\circ} W 136.9$  poles to  
 a post in the center of the Sandusky Road.  
 Thence with said road  $N 32^{\circ} E 102.83$  poles to a  
 point in said Sandusky road and one rod  
 south of the line of Survey 3321. Thence  
 $S 50^{\circ} W 100.67$  Poles parallel to and one rod North of  
 the North line of Survey 3321 to an iron bar with  
 four holes in it. Thence  $N 8^{\circ} 53' W 127.28$  poles to the  
 right of way of C.C. and L.R.R. Thence with said right  
 of way  $N 45^{\circ} 58' E 71.97$  poles to a corner, Thence  
 $S 57^{\circ} E 67.53$  poles to the corner of John Delaughter's 33 acre  
 lot, Thence  $N 50^{\circ} E 46$  poles to the corner of M.E. Church  
 lot, Thence  $S 41^{\circ} E 4$  poles to the South East corner  
 of said church lot, Thence  $N 50^{\circ} E 8.72$  poles along said  
 lot to the center of Baker and Yanceyfield Road.

43  
 Thence with said road S 41 1/2 E 82.35 poles to  
 the place of beginning and containing  
 175.22 acres

From	John A. Muselman		acres	47.26
"	Wm H	"		81.00
"	A. Davis			25.77
"	James Anselby			1.33
To	Joseph Neiper & John Sutherland		acres	6.50
"	James Anselby			4.55
"	Stromsburg			3.00
"	Wm. Moore			3.00
"	M E Church			.22
"	Rosa A Davis			.22
"	Wm Miller			11.12
"	Big 4 of CCC & STL RR			1.53
				30.59
				205.86
				30.14

No acres this description 175.22

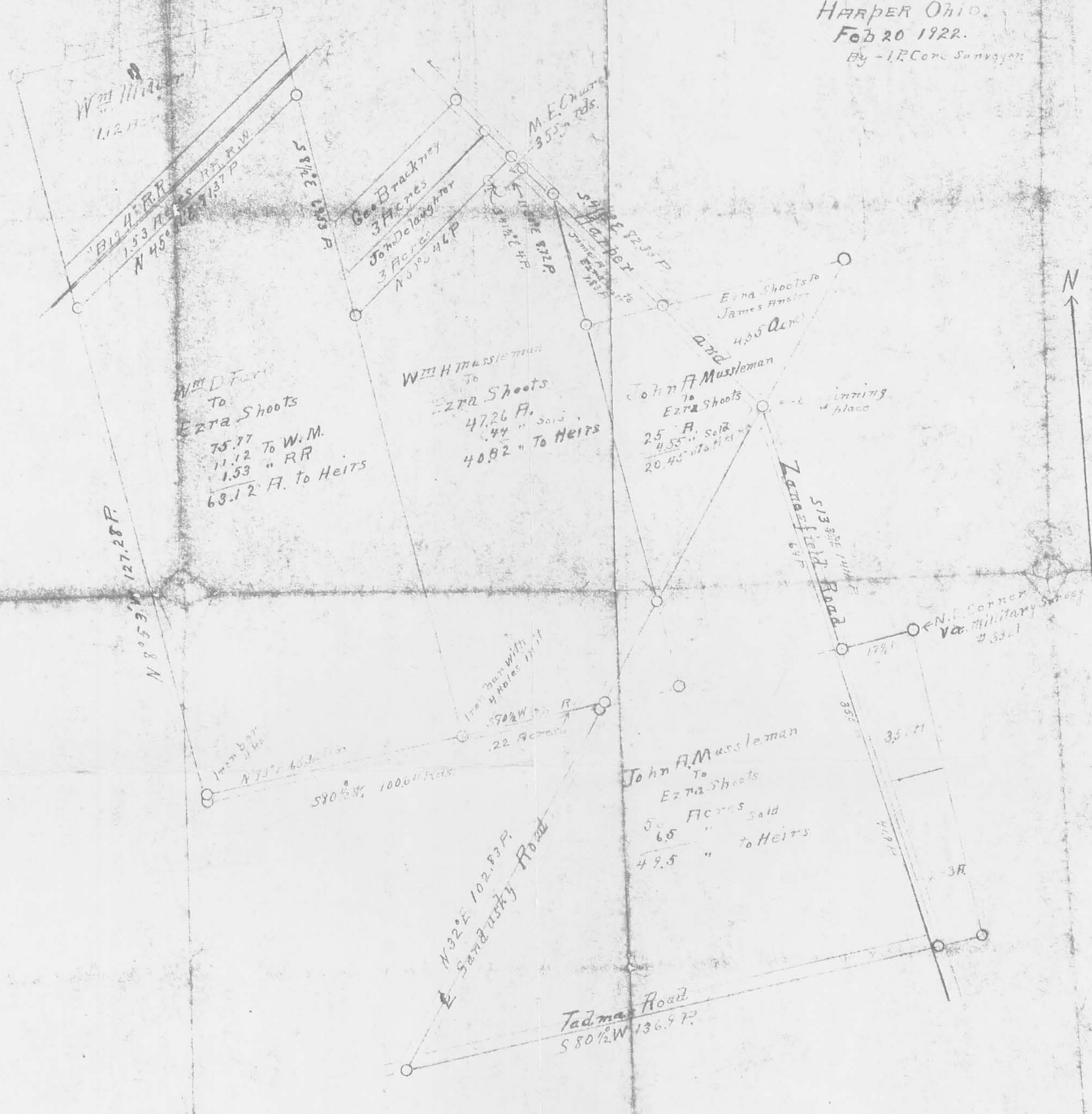
Compiled by E. P. Core Surveyor  
 Date Feb 20 1922 Rushsylvania O

# Plat of EZRA Shoots' Farm.

HARPER OHIO.

Feb 20 1922.

By - I.P. Conc. Surveyors.



INDEXED ON MAP  
4788 2P

RECID 5-29-07 SWM QUC

# Lee Surveying and Mapping Co., Inc.

Land Surveys • Topography • Subdivisions • Construction Layout

117 N. Madriver St.  
Bellefontaine OH 43311



Phone: (937) 593-7335  
Fax: (937) 593-7444

## SHOOTS 102.376 ACRES

Lying in Virginia Military Surveys 9885, 10179-10404, Rushcreek Township, Logan County, Ohio.

Being out of the Kathryn Shoots, Trustee of the Kathryn Shoots Living Trust, 174.567 acre tract as deeded and described in Official Record 529, Page 420, Tract II, Parcel One of the Logan County Records of Deeds and being more particularly described as follows:

Commencing on a railroad spike found at center-line Station 192 + 30 (Field Book 578, Page 20, County Highway 9) on the intersection of center-lines of County Highway 9 and County Highway 25.

THENCE, with the center-line of County Highway 25 (60 feet wide), N 37°56'-20"W, a distance of 1008.18 feet to a railroad spike set at the TRUE POINT OF BEGINNING.

THENCE, S 51°29'-22"W, a distance of 94.85 feet to a 5/8 inch iron rod set on the west line of Virginia Military Survey 10179-10404 and the east line of Virginia Military Survey 9885, passing a 5/8 inch iron rod set at 30.01 feet.

THENCE, with the west line of Virginia Military Survey 10179-10404 and the east line of Virginia Military Survey 9885, S 7°35'-23"E, a distance of 1466.78 feet to a railroad spike set on the center-line of County Highway 9, passing a 5/8 inch iron rod set at 1422.35 feet.

THENCE, with the center-line of County Highway 9 (60 feet wide), S 34°52'-34"W, a distance of 500.80 feet to a railroad spike set.

THENCE, with the lines of the Core Family Limited Partnership, 78.79 acre tract (O.R. 755, Pg. 719, Parcel V), the following two courses:

S 83°54'-00"W, a distance of 1660.56 feet to a 5/8 inch iron rod set, passing a 5/8 inch iron rod set at 39.74 feet.

N 7°39'-08"W, a distance of 2122.86 feet to a 5/8 inch iron rod set on the southerly right-of-way of the C.C.C. & St. Louis Railroad.

THENCE, with the southerly right-of-way of the C.C.C. & St. Louis Railroad, N 47°04'-13"E, a distance of 1338.15 feet to a 5/8 inch iron rod set.

THENCE, with the west lines of the Mary Davis 3.50 acre tract (O.R. 291, Pg. 483), the Sandra J. Smith 3.16 acre tract (O.R. 846, Pg. 804, Parcel II), the Sandra J. Smith 0.81 acre tract

INDEXED ON MAP  
4700 4800

# Lee Surveying and Mapping Co., Inc.

Land Surveys • Topography • Subdivisions • Construction Layout

117 N. Madriver St.  
Bellefontaine OH 43311



Phone: (937) 593-7335  
Fax: (937) 593-7444

(O.R. 846, Pg. 804, Parcel I, Tract II), the Joseph I. Stevens 3.00 acre tract (O.R. 161, Pg. 42) and the Bernard W. Ludwig 3.00 acre tract (O.R. 805, Pg. 421), S 6°51'-09"E, a distance of 1147.32 feet to a 5/8 inch iron rod set.

THENCE, with the southerly line of the said Ludwig 3.00 acre tract, N 51°51'-41"E, a distance of 519.94 feet to a 5/8 inch iron rod found.

THENCE, with the west lines of the Trustees of the Harper United Methodist Church, Inc., 0.154 acre tract (O.R. 724, Pg. 787, Tract II) and the Trustees of the Harper United Methodist Church, Inc., 0.916 acre tract (O.R. 724, Pg. 787, Tract I), S 37°47'-57"E, a distance of 217.43 feet to a 5/8 inch iron rod set.

THENCE, with the southerly lines of the said 0.916 acre tract, the Harper United Methodist Church, Inc., 0.153 acre tract (O.R. 6, Pg. 724) and the Harper United Methodist Church, Inc., 0.45 acre tract (Vol. 409, Pg. 343), N 51°38'-22"E, a distance of 394.43 feet to a MAG nail found on the center-line of County Highway 25, passing a 5/8 inch iron rod found at 364.43 feet.

THENCE, with the center-line of County Highway 25, S 37°56'-20"E, a distance of 54.53 feet to a railroad spike set on the east line of Virginia Military Survey 9885 and the west line of Virginia Military Survey 10179-10404.

THENCE, with the center-line of County Highway 25, S 37°56'-20"E, a distance of 161.05 feet to the point of beginning.

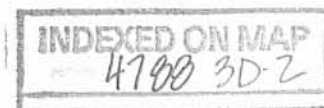
Containing 102.376 acres, of which 0.513 acre is within the highway rights-of-way. There is 0.175 acre in Virginia Military Survey 10179-10404 and 102.201 acres are in Virginia Military Survey 9885.

The basis for bearings is the center-line of County Highway 25, being N 37°56'-20"W, and all other bearings are from angles and distances measured in a field survey by Lee Surveying and Mapping Co., Inc. on May 18, 2007.

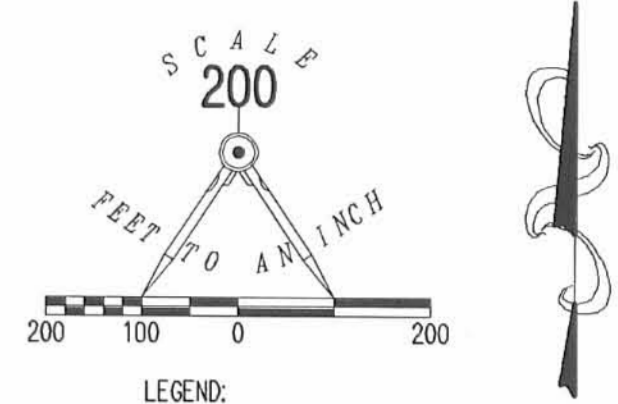


Description prepared by:

William K. Bruce  
Professional Surveyor 7437  
May 21, 2007

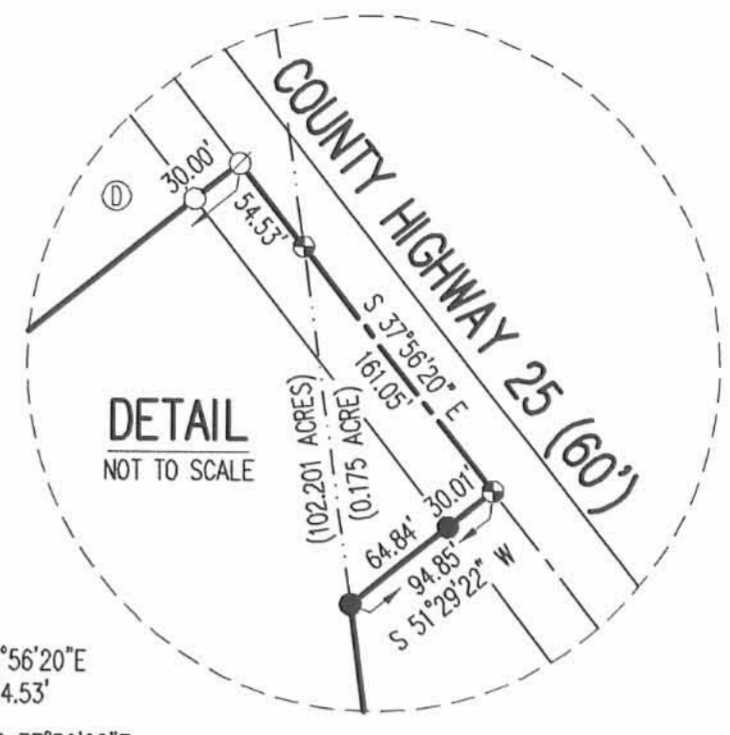
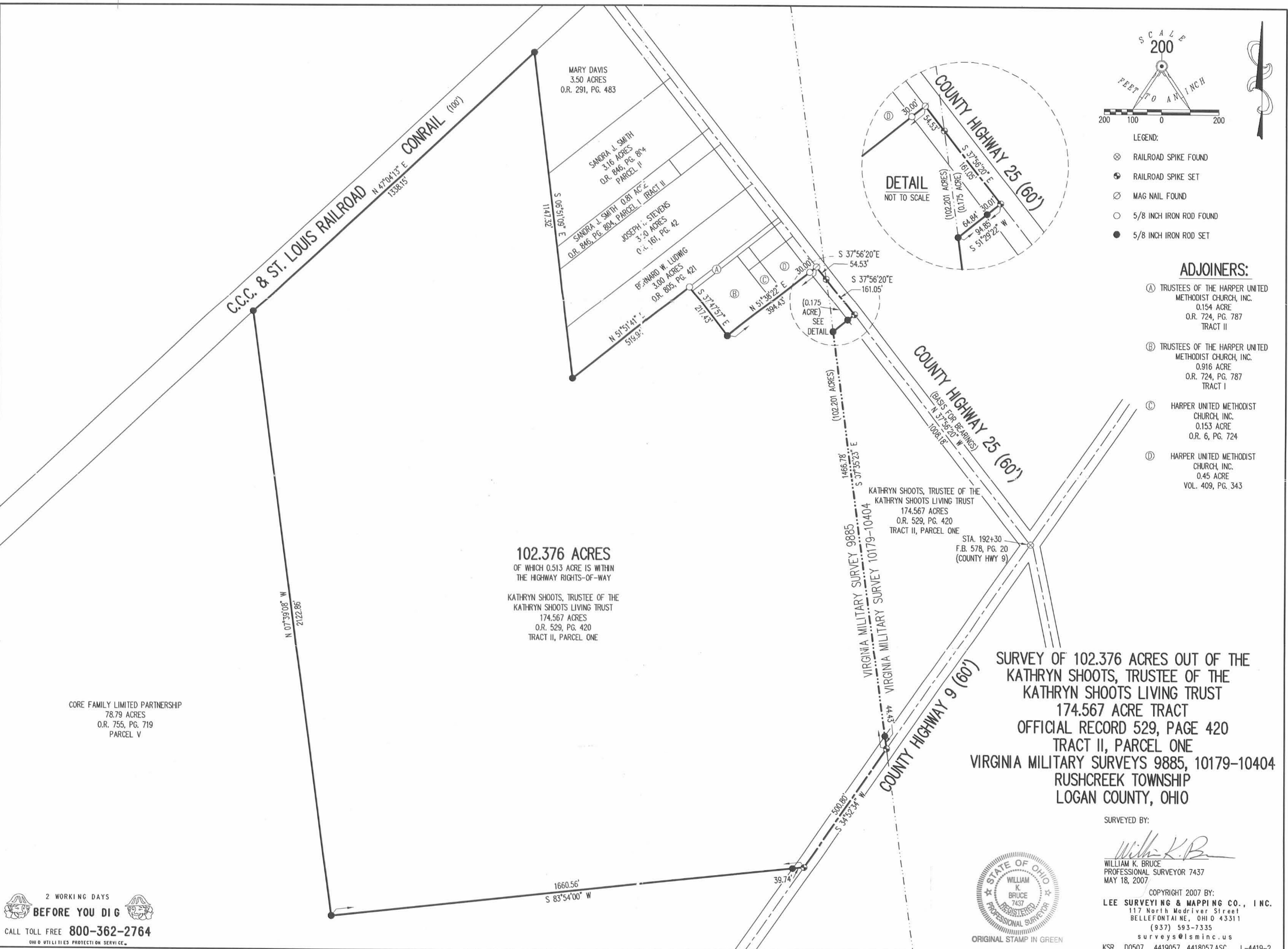


4419057



- LEGEND:
- ⊗ RAILROAD SPIKE FOUND
  - ⊕ RAILROAD SPIKE SET
  - ⊗ MAG NAIL FOUND
  - 5/8 INCH IRON ROD FOUND
  - 5/8 INCH IRON ROD SET

- ADJOINERS:
- Ⓐ TRUSTEES OF THE HARPER UNITED METHODIST CHURCH, INC.  
0.154 ACRE  
O.R. 724, PG. 787  
TRACT II
  - Ⓑ TRUSTEES OF THE HARPER UNITED METHODIST CHURCH, INC.  
0.916 ACRE  
O.R. 724, PG. 787  
TRACT I
  - Ⓒ HARPER UNITED METHODIST CHURCH, INC.  
0.153 ACRE  
O.R. 6, PG. 724
  - Ⓓ HARPER UNITED METHODIST CHURCH, INC.  
0.45 ACRE  
VOL. 409, PG. 343



**SURVEY OF 102.376 ACRES OUT OF THE KATHRYN SHOOTS, TRUSTEE OF THE KATHRYN SHOOTS LIVING TRUST 174.567 ACRE TRACT OFFICIAL RECORD 529, PAGE 420 TRACT II, PARCEL ONE VIRGINIA MILITARY SURVEYS 9885, 10179-10404 RUSHCREEK TOWNSHIP LOGAN COUNTY, OHIO**

SURVEYED BY:  
*William K. Bruce*  
WILLIAM K. BRUCE  
PROFESSIONAL SURVEYOR 7437  
MAY 18, 2007

COPYRIGHT 2007 BY:  
LEE SURVEYING & MAPPING CO., INC.  
117 North Modriver Street  
BELLEFONTAINE, OHIO 43311  
(937) 593-7335  
surveys@lsmcinc.us

KSR D0507 4419057 4418057.ASC L-4419-2



2 WORKING DAYS  
**BEFORE YOU DIG**

CALL TOLL FREE 800-362-2764  
OHIO UTILITIES PROTECTION SERVICE.

INDEXED ON MAP  
4700 3P

REC'D 5-29-07 SMy OK

# Lee Surveying and Mapping Co., Inc.

Land Surveys • Topography • Subdivisions • Construction Layout

117 N. Madriver St.  
Bellefontaine OH 43311



Phone: (937) 593-7335  
Fax: (937) 593-7444

## SHOOTS 60.419 ACRES

Lying in Virginia Military Surveys 9885, 10179-10404 and 3321, Rushcreek Township, Logan County, Ohio.

Being out of the Kathryn Shoots, Trustee of the Kathryn Shoots Living Trust, 174.567 acre tract as deeded and described in Official Record 529, Page 420, Tract II, Parcel One of the Logan County Records of Deeds and being more particularly described as follows:

Beginning on a railroad spike found at center-line Station 192+30 (Field Book 578, Page 20, County Highway 9) on the intersection of center-lines of County Highway 9 and County Highway 25.

THENCE, with the center-line of County Highway 9 (60 feet wide), N 34°52'-34"E, a distance of 9.04 feet to a 1/2 inch iron rod found at the intersection of the center-line of County Highway 25.

THENCE, with the center-line of County Highway 25 (50 feet wide), S 11°53'-11"E, a distance of 2346.38 feet to a railroad spike found at the intersection of the center-line of Township Road 57.

THENCE, with the center-line of Township Road 57 (60 feet wide), S 84°08'-42"W, a distance of 2255.80 feet to a 3/4 inch iron bar found in a monument box at the intersection of the center-line of County Highway 9.

THENCE, with the center-line of County Highway 9, N 34°52'-34"E, a distance of 3070.22 feet to the point of beginning.

Containing 60.419 acres, of which 4.916 acres are within the highway rights-of-way. There are 21.088 acres in Virginia Military Survey 10179-10404, 11.804 acres in Virginia Military Survey 9885 and 27.527 acres in Virginia Military Survey 3321.

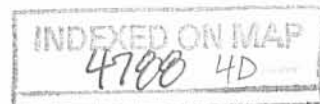
The basis for bearings is the center-line of County Highway 9, being N 34°52'-34"E, and all other bearings are from angles and distances measured in a field survey by Lee Surveying and Mapping Co., Inc. on May 18, 2007.



ORIGINAL STAMP IN GREEN

Description prepared by:

William K. Bruce  
Professional Surveyor 7437  
May 21, 2007

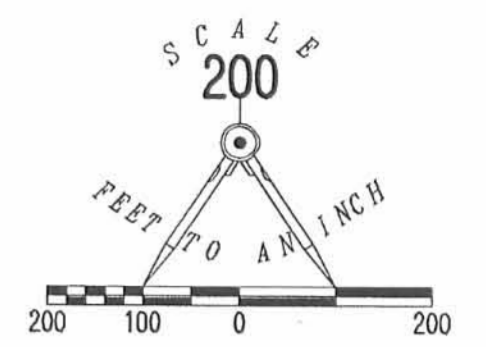
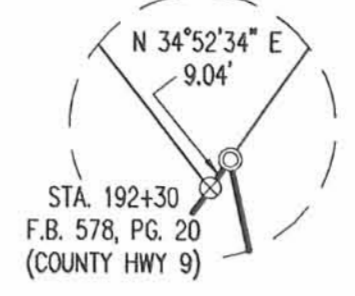


4421057

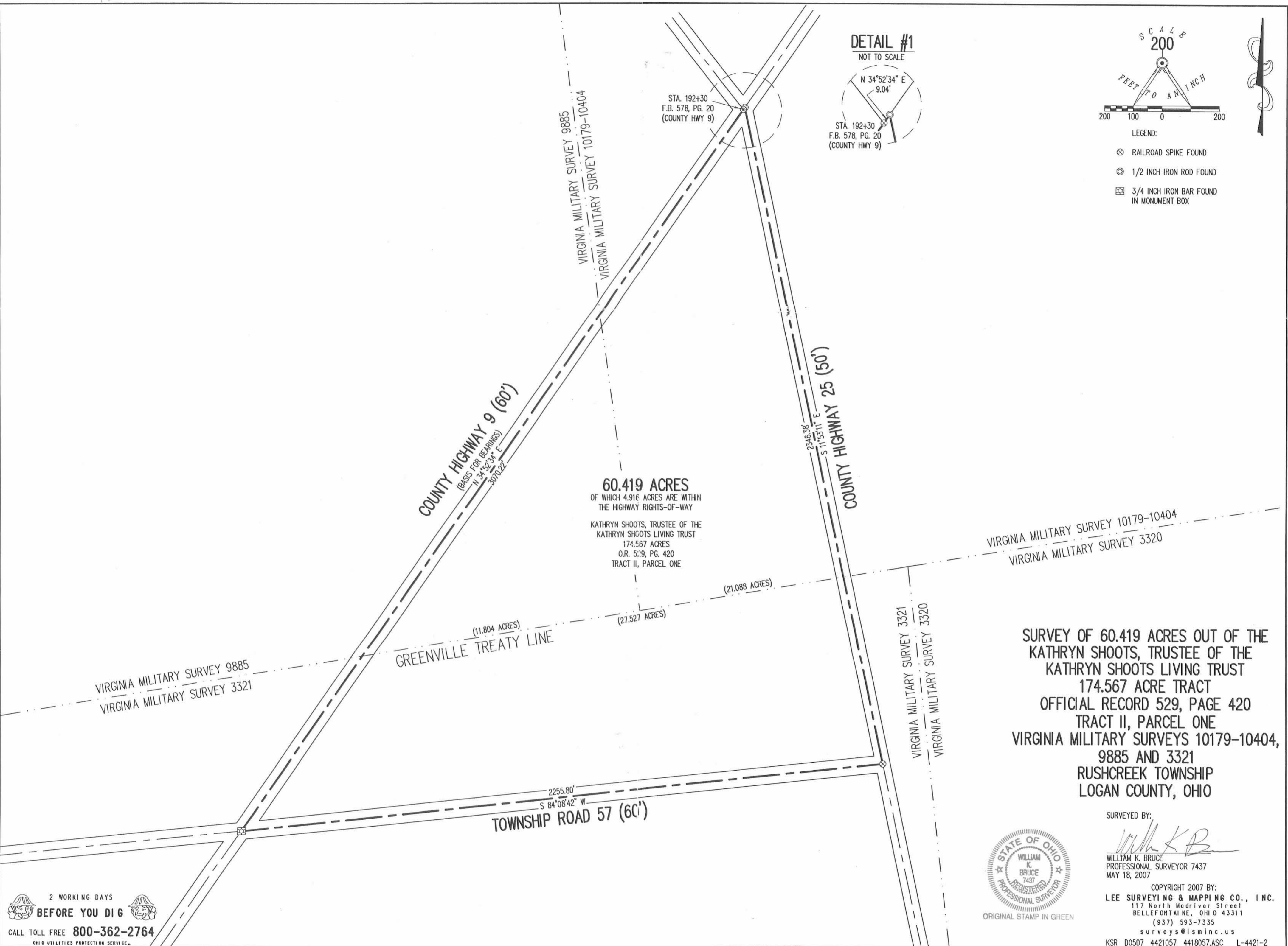


REV'D 5-29-07 SMM OK

DETAIL #1  
NOT TO SCALE



- LEGEND:
- ⊗ RAILROAD SPIKE FOUND
  - ⊙ 1/2 INCH IRON ROD FOUND
  - ⊠ 3/4 INCH IRON BAR FOUND IN MONUMENT BOX



**60.419 ACRES**  
OF WHICH 4.916 ACRES ARE WITHIN  
THE HIGHWAY RIGHTS-OF-WAY  
KATHRYN SHOOTS, TRUSTEE OF THE  
KATHRYN SHOOTS LIVING TRUST  
174.567 ACRES  
O.R. 5:9, PG. 420  
TRACT II, PARCEL ONE

**SURVEY OF 60.419 ACRES OUT OF THE  
KATHRYN SHOOTS, TRUSTEE OF THE  
KATHRYN SHOOTS LIVING TRUST  
174.567 ACRE TRACT  
OFFICIAL RECORD 529, PAGE 420  
TRACT II, PARCEL ONE  
VIRGINIA MILITARY SURVEYS 10179-10404,  
9885 AND 3321  
RUSHCREEK TOWNSHIP  
LOGAN COUNTY, OHIO**

SURVEYED BY:  
*William K. Bruce*  
WILLIAM K. BRUCE  
PROFESSIONAL SURVEYOR 7437  
MAY 18, 2007



ORIGINAL STAMP IN GREEN

COPYRIGHT 2007 BY:  
**LEE SURVEYING & MAPPING CO., INC.**  
117 North Madriver Street  
BELLEFONTAINE, OHIO 43311  
(937) 593-7335  
surveys@lsmcinc.us  
KSR D0507 4421057 4418057.ASC L-4421-2

2 WORKING DAYS  
**BEFORE YOU DIG**  
CALL TOLL FREE **800-362-2764**  
OHIO UTILITIES PROTECTION SERVICE

INDEXED ON MAP  
4788 4P

# Lee Surveying and Mapping Co., Inc.

Land Surveys • Topography • Subdivisions • Construction Layout

117 N. Madriver St.  
Bellefontaine OH 43311



Phone: (937) 593-7335  
Fax: (937) 593-7444

## SHOOTS 10.579 ACRES

Lying in Virginia Military Survey 10179-10404, Rushcreek Township, Logan County, Ohio.

Being out of the Kathryn Shoots, Trustee of the Kathryn Shoots Living Trust, 174.567 acre tract as deeded and described in Official Record 529, Page 420, Tract II, Parcel One of the Logan County Records of Deeds and being more particularly described as follows:

Beginning on a railroad spike found at center-line Station 192 + 30 (Field Book 578, Page 20, County Highway 9) on the intersection of center-lines of County Highway 9 and County Highway 25.

THENCE, with the center-line of County Highway 9 (60 feet wide), S 34°52'-34"W, a distance of 875.03 feet to a railroad spike set on the west line of Virginia Military Survey 10179-10404.

THENCE, with the west line of Virginia Military Survey 10179-10404, N 7°35'-23"W, a distance of 1466.78 feet to a 5/8 inch iron rod set, passing a 5/8 inch iron rod set at 44.43 feet.

THENCE, N 51°29'-22"E, a distance of 94.85 feet to a railroad spike set on the center-line of County Highway 25, passing a 5/8 inch iron rod set at 64.84 feet.

THENCE, with the center-line of County Highway 25 (60 feet wide), S 37°56'-20"E, a distance of 602.66 feet to a railroad spike set.

THENCE, with the lines of the Donald Leslie Corwin 0.47 acre tract (O.R. 51, Pg. 150), the following three courses:

S 51°58'-07"W, a distance of 149.96 feet to a 5/8 inch iron rod found, passing a 5/8 inch iron rod set at 30.00 feet.

S 38°44'-42"E, a distance of 137.92 feet to a 5/8 inch iron rod found.

N 50°29'-46"E, a distance of 148.07 feet to a railroad spike set on the center-line of County Highway 25, passing a 5/8 inch iron rod set at 118.06 feet.

THENCE, with the center-line of County Highway 25, S 37°56'-20"E, a distance of 271.43 feet to the point of beginning.

Containing 10.579 acres, of which 1.177 acres are within the highway rights-of-way.

The basis for bearings is the center-line of County Highway 25, being S 37°56'-20"E, and all other bearings are from angles and distances measured in a field survey by Lee Surveying and Mapping Co., Inc. on May 18, 2007.

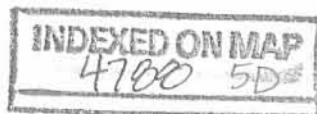


ORIGINAL STAMP IN GREEN

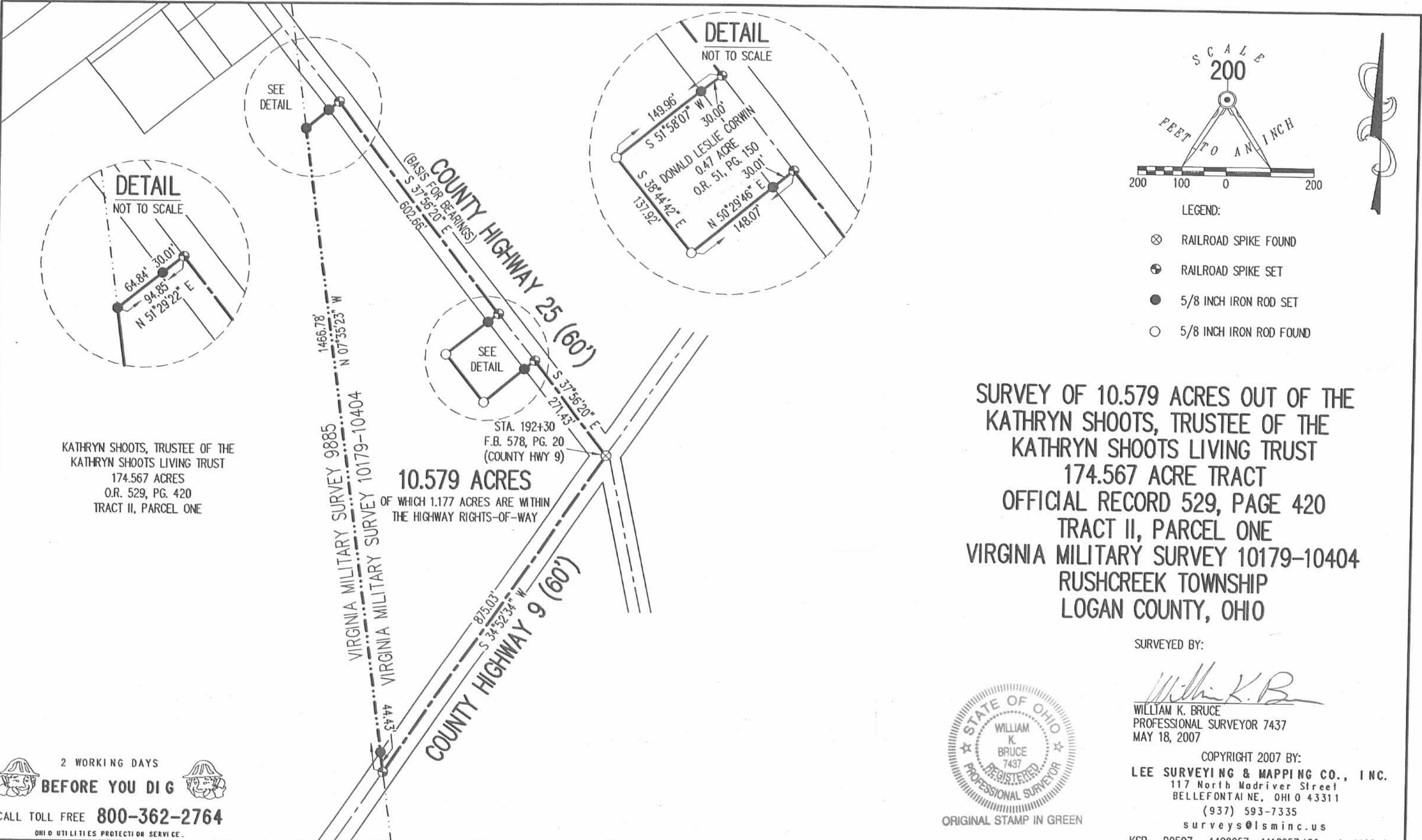
Description prepared by:

William K. Bruce  
Professional Surveyor 7437  
May 22, 2007

4420057



REC'D 529-07 SMYAL



SURVEY OF 10.579 ACRES OUT OF THE  
 KATHRYN SHOOTS, TRUSTEE OF THE  
 KATHRYN SHOOTS LIVING TRUST  
 174.567 ACRE TRACT  
 OFFICIAL RECORD 529, PAGE 420  
 TRACT II, PARCEL ONE  
 VIRGINIA MILITARY SURVEY 10179-10404  
 RUSHCREEK TOWNSHIP  
 LOGAN COUNTY, OHIO

SURVEYED BY:

*William K. Bruce*  
 WILLIAM K. BRUCE  
 PROFESSIONAL SURVEYOR 7437  
 MAY 18, 2007



COPYRIGHT 2007 BY:  
 LEE SURVEYING & MAPPING CO., INC.  
 117 North Madriver Street  
 BELLEFONTAINE, OHIO 43311  
 (937) 593-7335  
 surveys@lsminc.us  
 KSR D0507 4420057 4418057.ASC L-4420-2

2 WORKING DAYS  
**BEFORE YOU DIG**  
 CALL TOLL FREE **800-362-2764**  
 OHIO UTILITIES PROTECTION SERVICE

INDEXED ON MAP  
 4700 5P

REC'D 5-24-07 SMM & C

# Lee Surveying and Mapping Co., Inc.

Land Surveys • Topography • Subdivisions • Construction Layout

117 N. Madriver St.  
Bellefontaine OH 43311



Phone: (937) 593-7335  
Fax: (937) 593-7444

## SHOOTS 293.863 ACRE

Lying in Virginia Military Surveys 10179-10404, 9887, 13593, 13989 and 11016, Rushcreek Township, Logan County, Ohio.

Being all of the Kathryn Shoots, Trustee of the Kathryn Shoots Living Trust, 98.157 acre tract, 124 acre tract, 60.95 acre tract and 0.35 acre as deeded and described in Official Record 529, Page 420, Tract I, Parcels One, Two, Three and Four and the 1.282 acre tract as deeded and described in Official Record 804, Page 109 of the Logan County Records of Deeds and being more particularly described as follows:

Beginning on 1/2 inch iron rod found on the intersection of the center-lines of County Highway 9 and County Highway 25.

THENCE, with the center-line of County Highway 9 (60 feet wide), N 34°51'-41"E, a distance of 221.39 feet to a railroad spike found.

THENCE, with the lines of the Kathryn Shoots, Trustee of the Kathryn Shoots Living Trust, 0.593 acre tract (O.R. 529, Pg. 420, Tract III), the following four courses:

S 86°13'-30"E, a distance of 169.36 feet to a 5/8 inch iron rod set, passing a 5/8 inch iron rod set at 35.03 feet.

N 55°26'-19"E, a distance of 89.05 feet to a 5/8 inch iron rod set.

N 21°10'-25"W, a distance of 104.29 feet to a 5/8 inch iron rod set.

N 77°27'-07"W, a distance of 97.11 feet to a railroad spike found on the center-line of County Highway 9, passing a 5/8 inch iron rod set at 64.68 feet.

THENCE, with the center-line of County Highway 9, N 34°51'-41"E, a distance of 854.69 feet to a railroad spike set.

THENCE, with the south lines of the Alexander Andreoff 108 acre tract (O.R. 327, Pg. 785, Parcel One) and the Donald R. Stover 36.722 acre tract (O.R. 601, Pg. 494), N 81°54'-14"E, a distance of 4945.67 feet to a 5/8 inch iron rod found on the east line of Virginia Military Survey 10179-10404, passing a 5/8 inch iron rod set at 39.99 feet, a 6 inch wood post found at 40.99 feet and a 1-1/2 inch iron bar found at 4843.07 feet.

THENCE, with the east line of Virginia Military Survey 10179-10404, the west line of Virginia Military Survey 13593 and a southeasterly line of the said 36.722 acre tract, N 29°56'-34"E, a distance of 352.44 feet to a 5/8 inch iron rod found.

THENCE, with a southeasterly line of the said 36.722 acre tract, N 73°09'-52"E, a distance of 242.13 feet to a point in Rush Creek, passing a 5/8 inch iron rod found at 225.33 feet.

THENCE, with the channel of Rush Creek and the west line of the Harold A. Longbrake 207.1 acre tract (Vol. 383, Pg. 864, Tract I), the following two courses:

S 13°07'-03"W, a distance of 217.33 feet to a point, referenced by a 5/8 inch iron rod found that bears N 70°48'-10"W, a distance of 17.90 feet.

S 17°51'-22"W, a distance of 231.78 feet to a point.

THENCE, with the lines of a tract of unknown ownership, the following two courses:

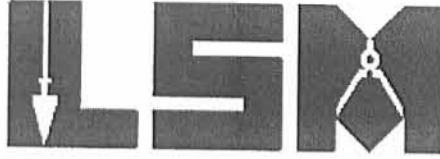
S 81°45'-14"W, a distance of 42.44 feet to a 5/8 inch iron rod found, passing a 5/8 inch iron rod found at 20.00 feet.

INDEXED ON  
4703

# Lee Surveying and Mapping Co., Inc.

Land Surveys • Topography • Subdivisions • Construction Layout

117 N. Madriver St.  
Bellefontaine OH 43311



Phone: (937) 593-7335  
Fax: (937) 593-7444

S 10°40'-03"E, a distance of 79.81 feet to a point in Rush Creek, referenced by a 5/8 inch iron rod found that bears S 28°43'-24"W, a distance of 30.69 feet.

THENCE, with the channel of Rush Creek and the west line of the aforesaid 207.1 acre tract, S 5°42'-06"E, a distance of 1600.73 feet to a point, referenced by a 5/8 inch iron rod set that bears N 81°22'-15"W, a distance of 25.00 feet.

THENCE, with the channel of Rush Creek and the west lines of the said 207.1 acre tract and the Harry Augustus Roberts, Trustee 134.67 acre tract (O.R. 349, Pg. 085, Parcel III), S 8°37'-43"W, a distance of 580.80 feet to a point, referenced by a 5/8 inch iron rod set that bears N 61°35'-05"W, a distance of 15.00 feet.

THENCE, with the channel of Rush Creek and the west line of the said 134.67 acre tract, S 28°48'-08"W, a distance of 349.77 feet to a point.

THENCE, with the northerly lines of the Paul D. Malina original 180.04 acre tract (Vol. 408, Pg. 329, Parcel I), the following three courses:

N 87°14'-41"W, a distance of 1313.67 feet to a 5/8 inch iron rod set, passing a 5/8 inch iron rod set at 16.77 feet.

N 9°07'-44"W, a distance of 140.26 feet to a 5/8 inch iron rod set.

S 85°53'-49"W, a distance of 1473.10 feet to a 5/8 inch iron rod set.

THENCE, with the north lines of the said original 180.04 acre tract and the Robert G. Shields 1.40 acre tract (O.R. 17, Pg. 290), S 84°33'-16"W, a distance of 2773.67 feet to a railroad spike found on the center-line of County Highway 25, passing a 5/8 inch iron rod set at 2748.50 feet.

THENCE, with the center-line of County Highway 25 (50 feet wide), N 11°53'-09"W, a distance of 1067.50 feet to the point of beginning.

Containing 293.863 acres, of which 1.359 acres are within the highway rights-of-way. There are 228.906 acres in Virginia Military Survey 10179-10404, 51.737 acres in Virginia Military Survey 13593, 1.007 acres in Virginia Military Survey 11016, 10.930 acres are in Virginia Military Survey 13989 and 1.283 acres in Virginia Military Survey 9887.

The basis for bearings is the center-line of County Highway 9, being N 34°51'-41"E, and all other bearings are from angles and distances measured in a field survey by Lee Surveying and Mapping Co., Inc. on May 16, 2007.

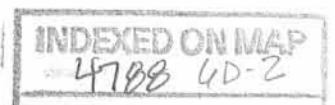


ORIGINAL STAMP IN GREEN

Description prepared by:

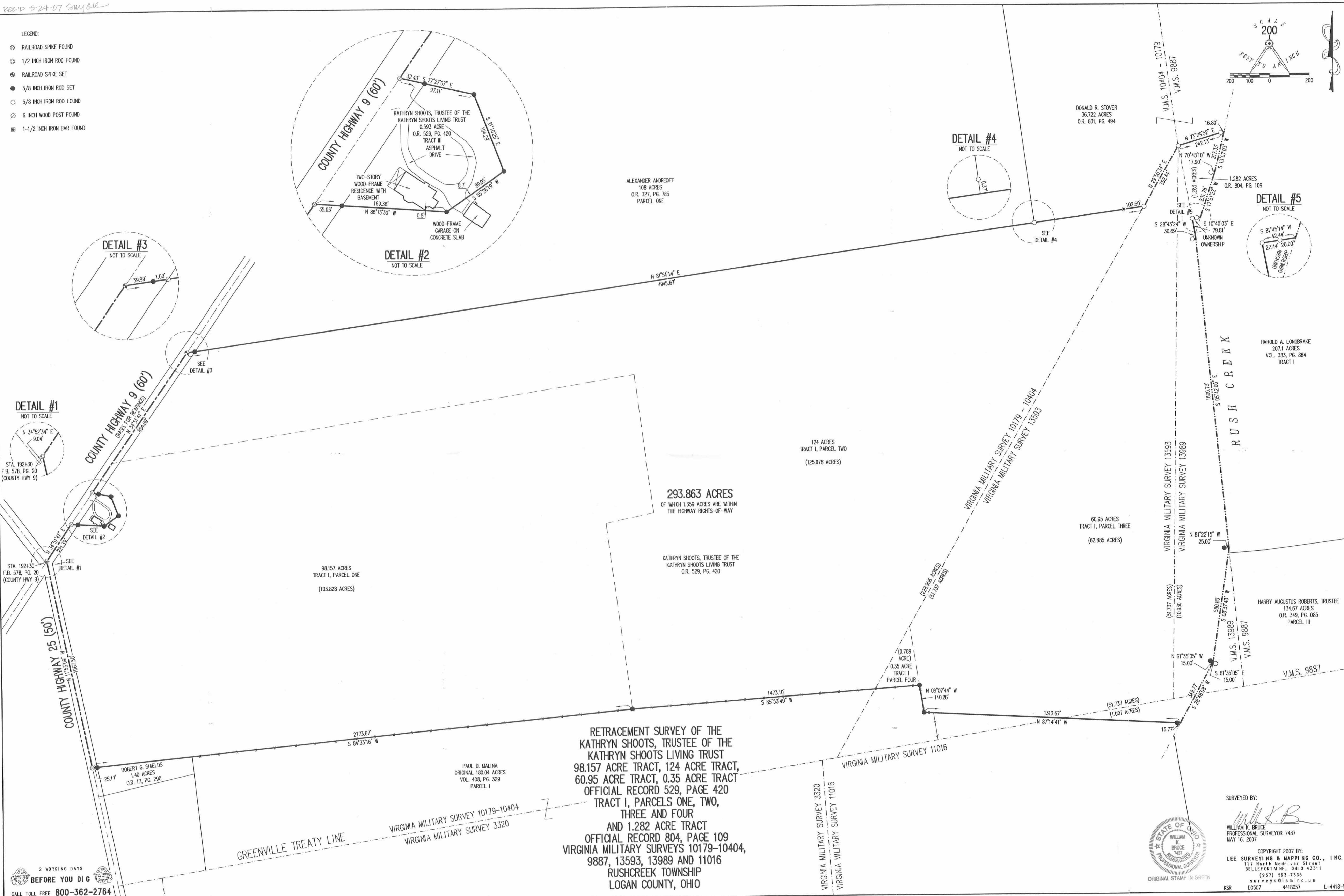
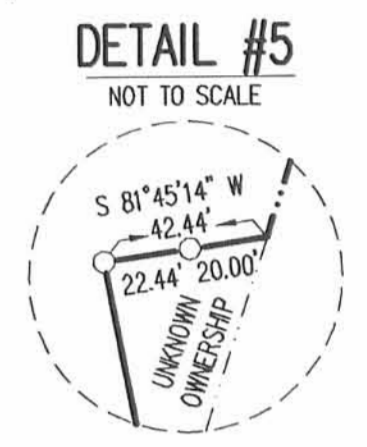
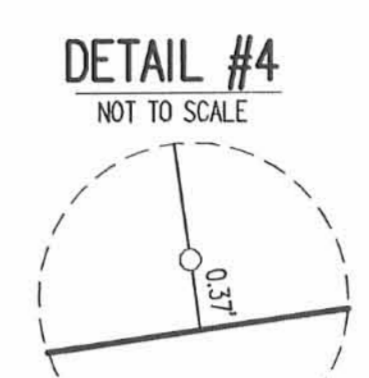
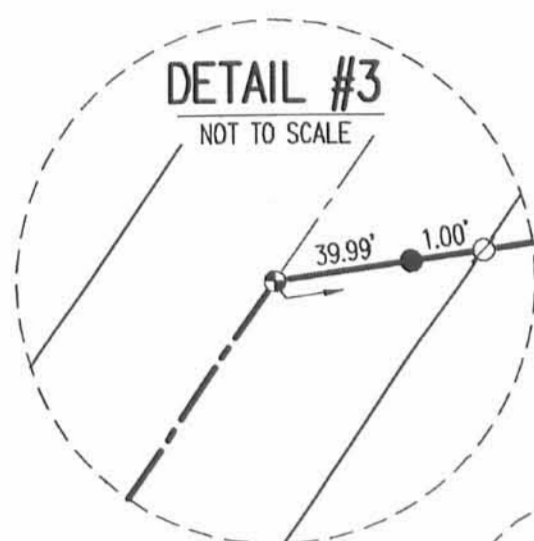
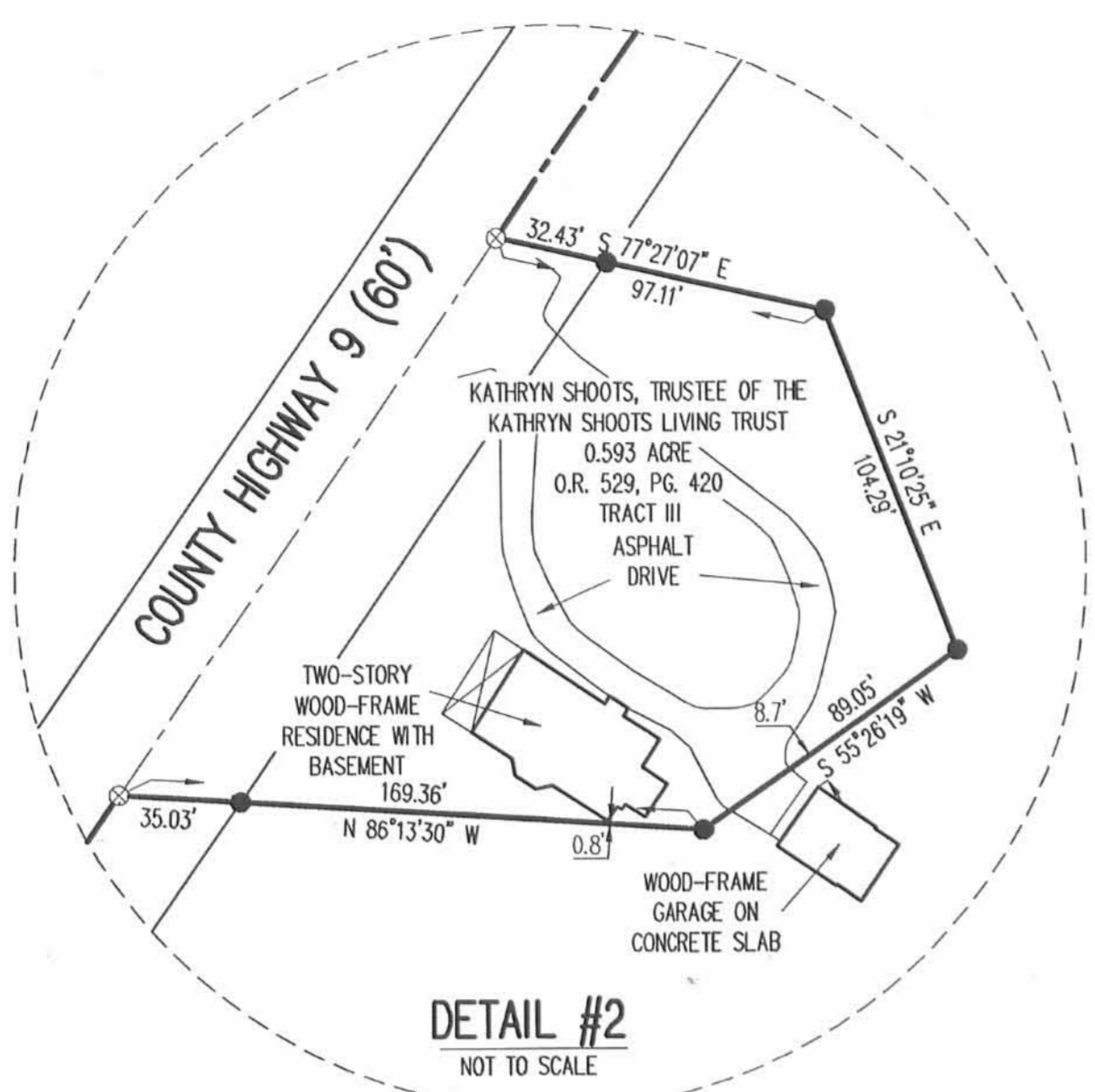
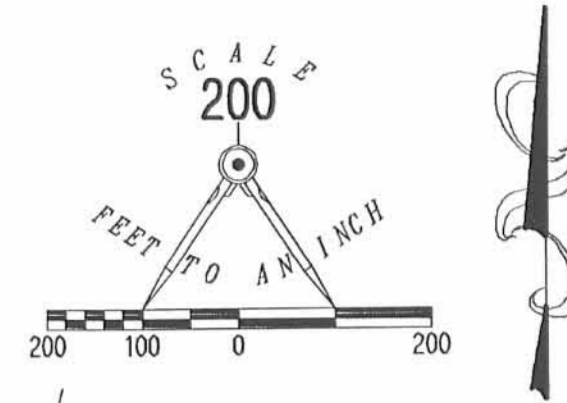
William K. Bruce  
Professional Surveyor 7437  
May 18, 2007

4418057



REV'D 5-24-07 SWM/BK

- LEGEND:
- ⊗ RAILROAD SPIKE FOUND
  - ⊙ 1/2 INCH IRON ROD FOUND
  - ⊕ RAILROAD SPIKE SET
  - 5/8 INCH IRON ROD SET
  - 5/8 INCH IRON ROD FOUND
  - ⊗ 6 INCH WOOD POST FOUND
  - ⊙ 1-1/2 INCH IRON BAR FOUND



RETRACEMENT SURVEY OF THE  
KATHRYN SHOOTS, TRUSTEE OF THE  
KATHRYN SHOOTS LIVING TRUST  
98.157 ACRE TRACT, 124 ACRE TRACT,  
60.95 ACRE TRACT, 0.35 ACRE TRACT  
OFFICIAL RECORD 529, PAGE 420  
TRACT I, PARCELS ONE, TWO,  
THREE AND FOUR  
AND 1.282 ACRE TRACT  
OFFICIAL RECORD 804, PAGE 109  
VIRGINIA MILITARY SURVEYS 10179-10404,  
9887, 13593, 13989 AND 11016  
RUSHCREEK TOWNSHIP  
LOGAN COUNTY, OHIO

2 WORKING DAYS  
BEFORE YOU DIG  
CALL TOLL FREE 800-362-2764  
OHIO UTILITIES PROTECTIVE SERVICE

INDEXED ON MAP  
4700 GP



SURVEYED BY:  
*William K. Bruce*  
WILLIAM K. BRUCE  
PROFESSIONAL SURVEYOR 7437  
MAY 16, 2007

COPYRIGHT 2007 BY:  
LEE SURVEYING & MAPPING CO., INC.  
117 North Madriver Street  
BELLEFONTAINE, OHIO 45311  
(937) 593-7335  
surveys@lsmcinc.us

KSR 00507 4418057 L-4418-1