

COUNTY ROAD 5 RUSHCREEK TWP

R.R. SPK. FD. STA 0+00 CR 5  
HARROW TOOTH SET

$\frac{1}{8}$ " IRON BAR FO (OVER STONE)

INDEXED ON MAP

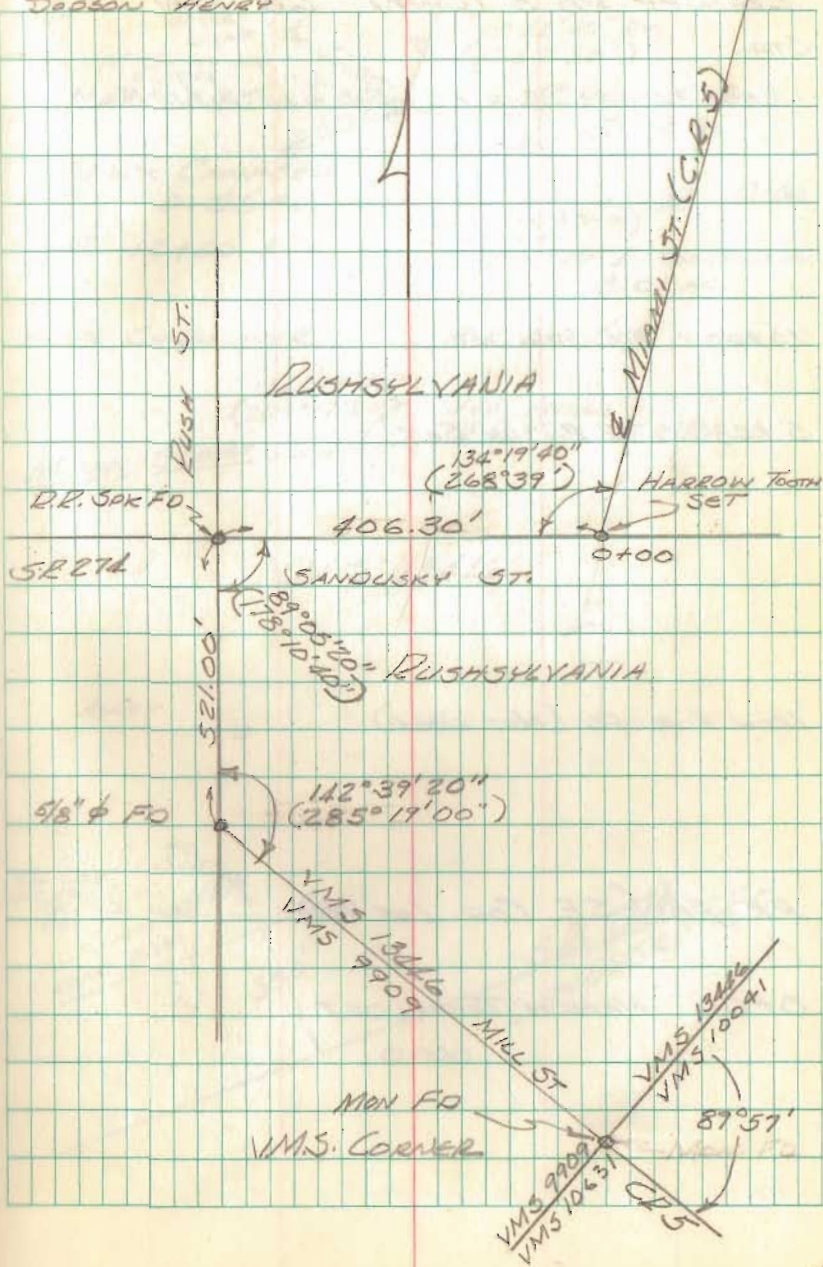
4896

should be 4897

GEESLIN  
NICHOLS  
BROOKS  
DEASON HENRY

AUGUST, 1967

25





COUNTY RD 5 (CONT) 60' R/W

STA.

14+08.85 1/2" BAR FO / REPLACED w/ 1" BAR

10+00 R.R. SPK. SET

5+43.20 R.R. SPK SET

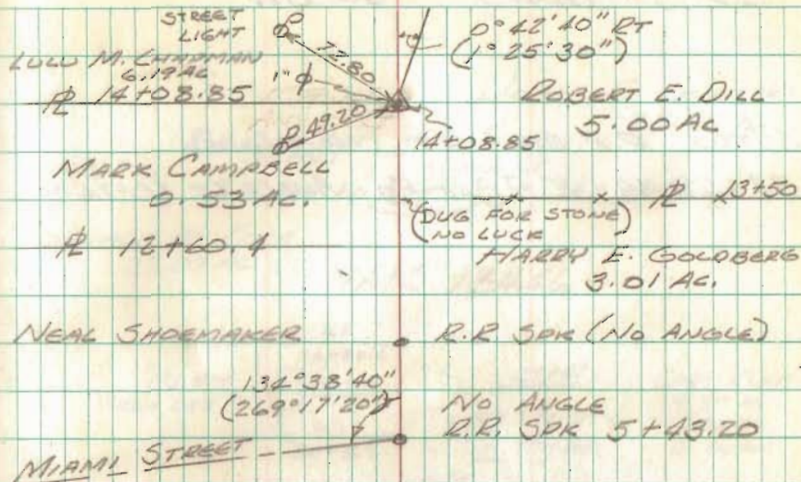
IRON PIPE FO (NOT USED)

PK. FO (S.E. COR. LOT 16)

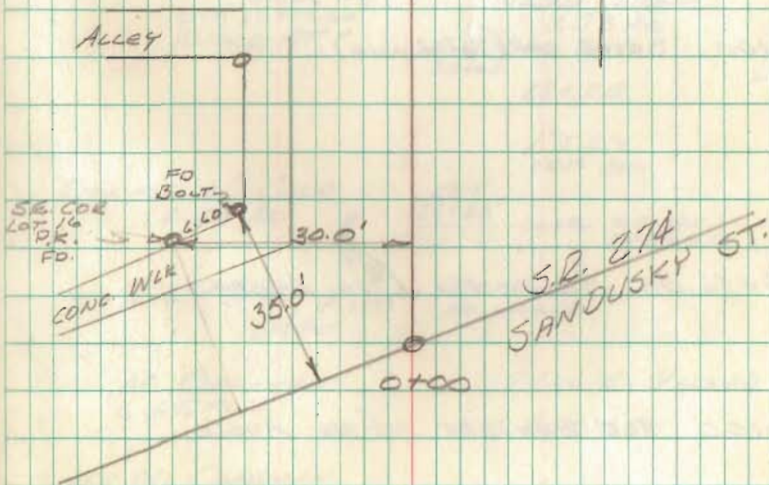
0+00 HARRON TOOTH SET

AUGUST 1969

26



V.M.S. 13446





C.R. 5 (CONT) 60' R/W

35+00 R.R. SPIKE SET (NO ANGLE)

34+68.35 1"  $\square$  BAR FO ANGLE LT ( $0^{\circ}12'00''$   
 $0^{\circ}24'00''$ )

30+00 R.R. SPIKE SET (NO ANGLE)

26+75.60 STONE FO ANGLE RT ( $0^{\circ}08'40''$   
 $0^{\circ}17'20''$ )

25+00 SPIKE SET (NO ANGLE)

23+96.05 STONE FO (NO ANGLE)

20+00 R.R. SPIKE SET (NO ANGLE)

15+00 R.R. SPIKE SET (NO ANGLE)

AUGUST 1969

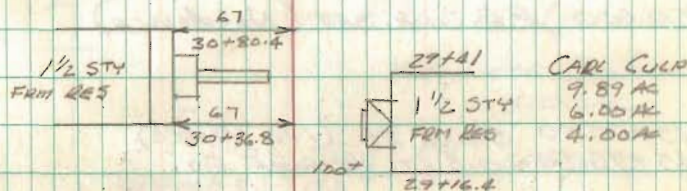
27

JOHN F. PRUSSTAT

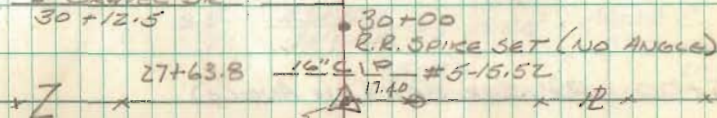
R.R. SPIKE SET NO ANGLE 25.40 AC  
35+00 ANGLE LT  
1"  $\square$  BAR FO 21.45  
34+68.35  $\square$

DONALD W. CULP  
23.07 AC

YMS 13446



E. GEORGE DR  
30+12.5



STONE FO  
STA 26+75.60  
ANGLE RT

VEDNA DEEM  
3.78 AC.

R.R. SPIKE SET  
25+00  
25+18.5

1/2 STY  
FRM REG.

DONALD W. CULP  
4.49 AC.

58.6  
24+88 GR. DR.  
24+66.6  $\square$



LULU M. CHAPMAN  
6.65 AC

MAX E. YARNER

20+00 R.R. SPIKE SET

LULU M. CHAPMAN  
6.17 AC.

15+00 R.R. SPIKE SET



C.R. 5 (CONT) 60' R/W  
55+00 R.R. SPR SET (NO ANGLE)

50+00 R.R. SPR SET (NO ANGLE)

45+75.50 STONE FO (NO ANGLE)  
45+75.50 - 0.5 LT. 3/4" PIPE FO.

45+00 R.R. SPR SET (NO ANGLE)

40+00 R.R. SPR SET (NO ANGLE)

39+67.9 - 1.45' RT 3/4" PIPE FO.

AUGUST 1969

28

55+00 R.R. SPR SET (NO ANGLE)

74.2'  
51+75  
2 STD  
STONE RES  
51+45

51+00  
GR. DE

50+00 R.R. SPR SET (NO ANGLE)

KENNETH S. JONES  
15.00 AC.

21.10' STONE FO  
3/4" PIPE FO 19.8  
45+75.50

0.5' 45+10.4 21" CMP #5-15.85 MERLE C. STRANSEN 20.00 AC

45+00  
R.R. SPR SET (NO ANGLE)

42+40  
GR. DE.

V.M.S. 13446

42+10  
1 STD  
FIRM VACANT

96  
41+55  
R.R. SPR SET NO ANGLE  
40+00

39+72 18" CMP #5-15.75

DONALD W. CULP

118.72 AC

1.45'  
39+67.9  
3/4" PIPE FO

JOHN F. PUGHSTAT  
25.40 AC.



C.R. 5 (Cont) 60' R/W

76+89.50 STONE FO ANGLE RT ( $0^{\circ}16'$   
( $0^{\circ}31'40''$ )

75+00 R.R. SPK SET (NO ANGLE)

70+00 R.R. SPK SET (NO ANGLE)

67+62.30 1" IRON BAR FO. (NO ANGLE)

65+00 R.R. SPK SET (NO ANGLE)

64+92.50 1/2" IRON BAR <sup>FO. EVIDENCE OF OLD</sup>  
<sup>HUB/REPLACED W/ 1/2"  $\phi$</sup>   
Angle ( $7^{\circ}22'00''$   
( $14^{\circ}44'20''$ ) Left.

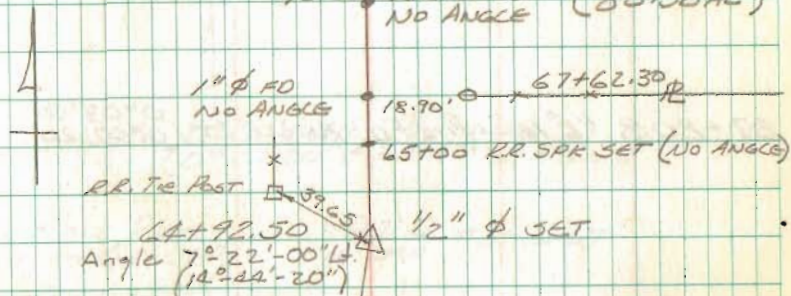
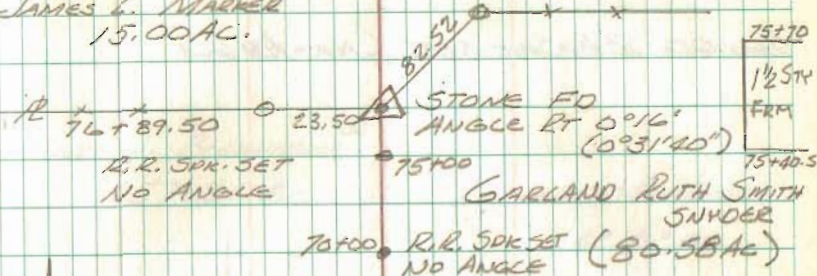
60+00 R.R. SPK SET (NO ANGLE)

56+58.4 1" IRON BAR SET ANGLE RT  
( $8^{\circ}51'40''$   
( $17^{\circ}43'20''$ )

AUGUST 1969

29

JAMES L. MARKER  
15.00 AC.



GARLAND RUTH SMITH  
SNYDER  
62.50 AC.

KENNETH S. JONES  
28.94 AC.

VMS 9954

ARRAUNT & TR. 111  
60+19.7

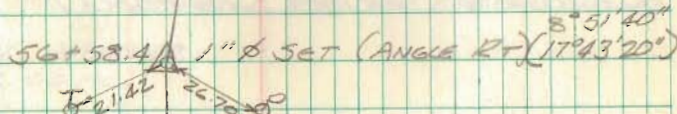
VMS 13446 60+00

VMS 9954

VMS 13446

RR SPK SET (NO ANGLE)

DANALD W. CULD  
118.72 AC.





AUGUST 1967

30

C.R. 5 (CONT) 60' R/W

90+00 R.R. SPK SET (NO ANGLE)

87+80.8 1/2" IRON PIN FD ANGLE LT ( $0^{\circ}03'50''$   
( $0^{\circ}07'20''$ )

85+00 R.R. SPK SET (NO ANGLE)

80+00 R.R. SPK SET (NO ANGLE)

90+00 R.R. SPK SET (NO ANGLE)

CARL J. BLEININGER<sup>JR</sup>

157.20 AC.

LOWELL M. JONES

43.83 AC



ANGLE  $0^{\circ}03'50''$   $\Delta$  1/2"  $\phi$  FD  $\times$   $\Delta$   
 ( $0^{\circ}07'20''$ ) 21.9' 87+80.8'  $\times$

GARLAND RUTH  
SMITH SNYDER87+71.5 #5-16.67  
10" CMA

85+00 R.R. SPK SET (NO ANGLE)

84+87 DIRT DR  
TO DIRT RD

84+80.7

GARLAND RUTH SMITH  
SNYDER  
80.58 AC84+59  
GR. DR84+35  
2.57  
FROM RES

83+99

VMS 9954

20" CIP 5-16.55  
81+68

80+00 R.R. SPK SET (NO ANGLE)

JAMES L. MARKER  
15.00 AC



C.R. 5 (CONT) 60' R/W

110+00 R.R. SPK SET (NO ANGLE)

108+70.4 - 1.5' LT  $\frac{5}{8}$ " IRON BAR FO

105+00 R.R. SPK SET (NO ANGLE)

100+00 R.R. SPK SET (NO ANGLE)

98+72.26  $\frac{1}{2}$ " IRON BAR FO ANGLE LT ( $0^{\circ}21'20''$ )  
( $0^{\circ}43'00''$ )

95+00 R.R. SPK SET (NO ANGLE)

AUGUST 1969

31

110+00 R.R. SPK SET

$\frac{5}{8}$ "  $\phi$  FO  $\times Z \times 108+70.49$

11.5

N. 6.0° W.  
(Mag. bearing)

GR. DE  
107+11

105+00 R.R. SPK SET

WILLIAM F. CRUMM  
104.0 AC

100+00 R.R. SPK SET

98+72.26  $\frac{1}{2}$ "  $\phi$  FO ANGLE LT ( $0^{\circ}21'20''$ )  
( $0^{\circ}43'00''$ )  
17.36  $\times 98+72.26$

HIGH PRESSURE PIPE LINE  
97+76.7

96+68.6

1 STR. FROM  
RES

98.6  
96+24

VMS 9954

CARL J. BLEININGER JR

LOWELL M. JONES  
43.83 AC

157.20 AC

95+00 R.R. SPK SET (NO ANGLE)



C.R. 5 (CONT) 60' R/W

126+36.98 1/2" IRON BAR FO / REPLACED WITH  
1" IRON BAR. DUG FOR STONE.  
NO LUCK

125+00 R.R. SPK SET (NO ANGLE)

120+00 R.R. SPK SET (NO ANGLE)

115+00 R.R. SPK SET (NO ANGLE)

110+05.63 1" IRON BAR FO ANGLE RT. ( $0^{\circ}28'20''$ )

AUGUST 1969.

32

40' COTTAGE ROAD  
BRIDGE #5-20.35  
VMS 9975  
T.R. 51  
VMS 9954  
126+36.98 T.R. 51  
1"  $\phi$  FO / REDUCED W/ 1"  $\phi$

125+00 R.R. SPK SET

120+00 R.R. SPK SET

115+25  
18" CMP  
115+00 R.R. SPK SET

111+23.5  
6c DL

110+79.3

1 1/2" STY.  
FRM.

65.5  
110+53.3

RODGER SHAW  
82.40 AC.

110+64  
FLO. DR.  
WILLIAM F. CRUMM  
104.00 AC

# 110+05.63 30.45 1"  $\phi$  FO ANGLE RT.  
C. J. BLEININGER JR  
157.20 AC. ( $0^{\circ}28'20''$ )  
( $0^{\circ}57'00''$ )