

Watkins to Jacobs Survey Description

March, 1972

Being situated in Rushcreek Township, Logan County, Ohio; and being a part of V.M.S. #9823.

Beginning at a corner post at the northeast corner of Watkins Allotment.

Thence with the extension of the east line of Watkins Allotment N 9° - 00'W 219.2 feet to a iron.

Thence S 81° - 00'W 818.2 feet more or less to a point.

Thence S 22° - 14'E 225.1 feet to a point in Mountain Lake.

Thence with the north line of Watkins Allotment N 81° - 00'E 766.7 feet more or less to the place of beginning, passing thru a iron at 166.7 feet.

Containing 4.00 acres more or less. Being surveyed from a 52.03 acre tract.

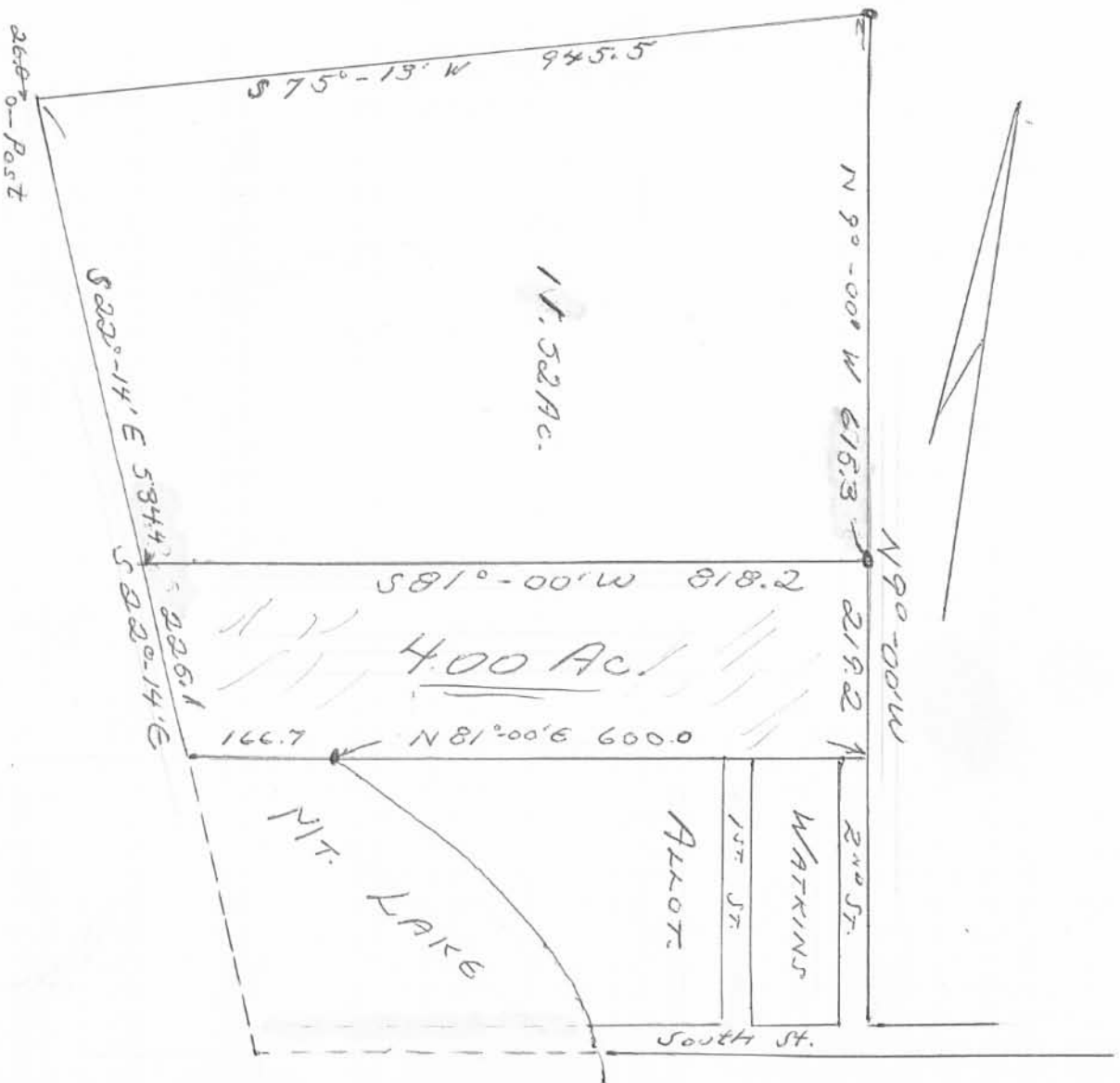
Owen K. Shirk
Surveyor 4271

INDEXED ON MAP

ID

4982

WATKINS - JACOBS SURVEY
 RUSHCREEK TWP, LOGAN CO., OHIO
 V.M.S. 9823 - 1" = 200' - • DENOTES IRONS



Owen K. Shirk
 Surveyor #271
 Surveyed: 3-28-72

IP

4982