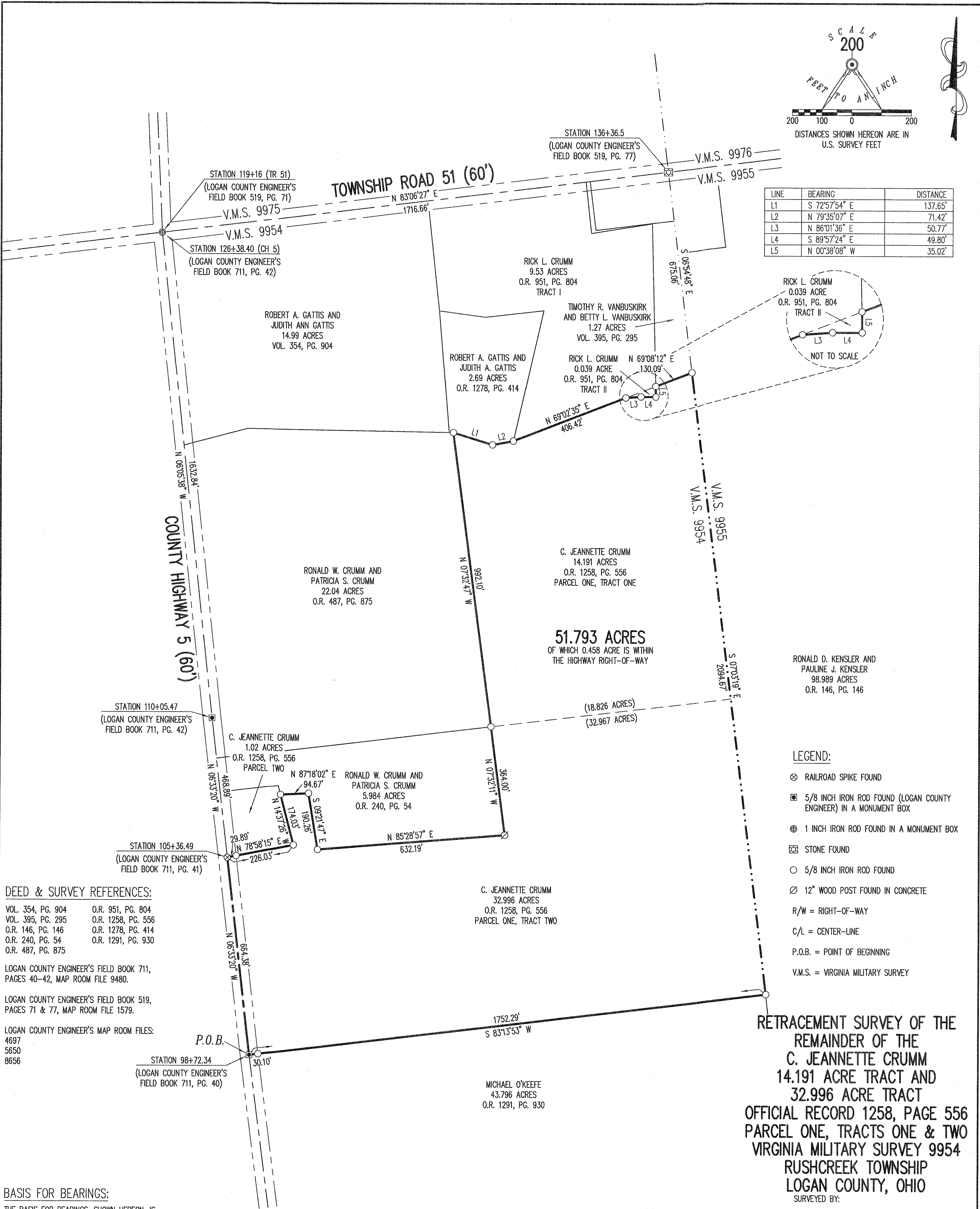
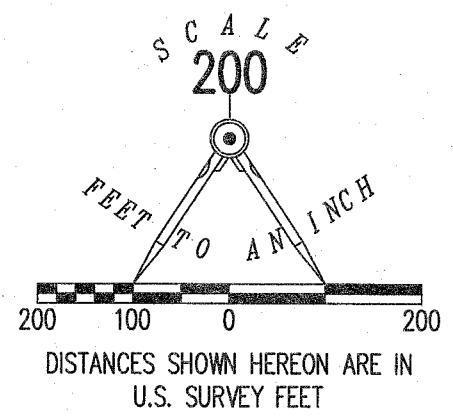
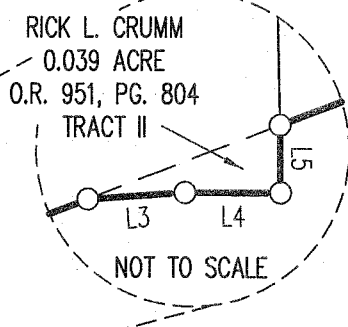


APPROVED



LINE	BEARING	DISTANCE
L1	S 72°57'54" E	137.65'
L2	N 79°35'07" E	71.42'
L3	N 86°01'36" E	50.77'
L4	S 89°57'24" E	49.80'
L5	N 00°38'08" W	35.02'



LEGEND:

- ⊗ RAILROAD SPIKE FOUND
- ⊠ 5/8 INCH IRON ROD FOUND (LOGAN COUNTY ENGINEER) IN A MONUMENT BOX
- ⊙ 1 INCH IRON ROD FOUND IN A MONUMENT BOX
- ⊡ STONE FOUND
- 5/8 INCH IRON ROD FOUND
- ⊘ 12" WOOD POST FOUND IN CONCRETE
- R/W = RIGHT-OF-WAY
- C/L = CENTER-LINE
- P.O.B. = POINT OF BEGINNING
- V.M.S. = VIRGINIA MILITARY SURVEY

DEED & SURVEY REFERENCES:

- VOL. 354, PG. 904 O.R. 951, PG. 804
- VOL. 395, PG. 295 O.R. 1258, PG. 556
- O.R. 146, PG. 146 O.R. 1278, PG. 414
- O.R. 240, PG. 54 O.R. 1291, PG. 930
- O.R. 487, PG. 875

LOGAN COUNTY ENGINEER'S FIELD BOOK 711, PAGES 40-42, MAP ROOM FILE 9480.

LOGAN COUNTY ENGINEER'S FIELD BOOK 519, PAGES 71 & 77, MAP ROOM FILE 1579.

LOGAN COUNTY ENGINEER'S MAP ROOM FILES: 4697, 5650, 8656

BASIS FOR BEARINGS:

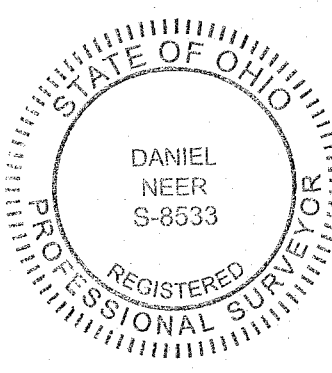
THE BASIS FOR BEARINGS, SHOWN HEREON, IS GRID NORTH, OHIO STATE PLANE COORDINATE SYSTEM, NORTH ZONE, NAD83 (2011).

THIS SURVEY WAS PREPARED IN THE ABSENCE OF A COMPLETE AND ACCURATE TITLE SEARCH AND DOES NOT GUARANTEE TITLE.

2 WORKING DAYS BEFORE YOU DIG

CALL TOLL FREE 800-362-2764

RETRACEMENT SURVEY OF THE
 REMAINDER OF THE
 C. JEANNETTE CRUMM
 14.191 ACRE TRACT AND
 32.996 ACRE TRACT
 OFFICIAL RECORD 1258, PAGE 556
 PARCEL ONE, TRACTS ONE & TWO
 VIRGINIA MILITARY SURVEY 9954
 RUSHCREEK TOWNSHIP
 LOGAN COUNTY, OHIO
 SURVEYED BY:



Daniel A. Neer
 DANIEL A. NEER
 PROFESSIONAL SURVEYOR NO. 8533
 JUNE 29, 2018

COPYRIGHT 2018 BY:
 LEE SURVEYING & MAPPING CO.
 117 North Madriver Street
 BELLEFONTAINE, OHIO 43311
 (937) 593-7335
 WWW.LEE-SURVEYING.COM
 surveys@lee-surveying.com
 KSS D0518 63950518 L-6395-2

INDEXED ON MAP 5050