

Lee Surveying and Mapping Co.



Farm Surveys • Lot Surveys • Descriptions • Subdivisions

855 EAST SANDUSKY AVENUE
BELLEFONTAINE, OHIO 43311

CLAYTON M. LEE, P. S.
(513) 593-5780

Situated in both Bokescreek and Rushcreek Townships, V.M.S. 5288 and 13646, Logan County, Ohio and better described as follows:

Beginning at a railroad spike in the center-line of County Highway No. 26 and designated as being Station 33+34 on the County Engineers records of said County Highway 26. Said center-line of highway also being the Greenville Treaty Line. Beginning point also being the Northwest corner of that 61.08 acre tract described in Volume 343, Page 332 of the Logan County Records of Deeds.

THENCE, with said center-line and Treaty Line, N 80°-00' E, a distance of 746.4 feet to a railroad spike.

THENCE, S 10°-00' E, a distance of 619.7 feet, to an iron pipe crossing from V.M.S. 13646 into V.M.S. 5288 at 181.66 feet.

THENCE, N 80°-00' E, a distance of 120.7 feet to an iron rod.

THENCE, S 10°-00' E, a distance of 151.9 feet to an iron rod.

THENCE, S 79°-25' W, a distance of 862.3 feet to an iron pipe set in the line between V.M.S. 5288 and V.M.S. 3472.

THENCE, with the V.M.S. line, N 10°-21' W, a distance of 780.4 feet to the point of beginning, crossing back into V.M.S. 13646 at 335.9 feet. Containing 13.69 acres, of which 11.05 acres are in Bokescreek Township and 2.64 acres are in Rushcreek Township.

Also of this acreage, 8.30 acres are in V.M.S. 5288 and 5.39 acres are in V.M.S. 13646.

Prior Deed Reference: Volume 343, Page 332

Surveyed by

Clayton M. Lee

Clayton M. Lee

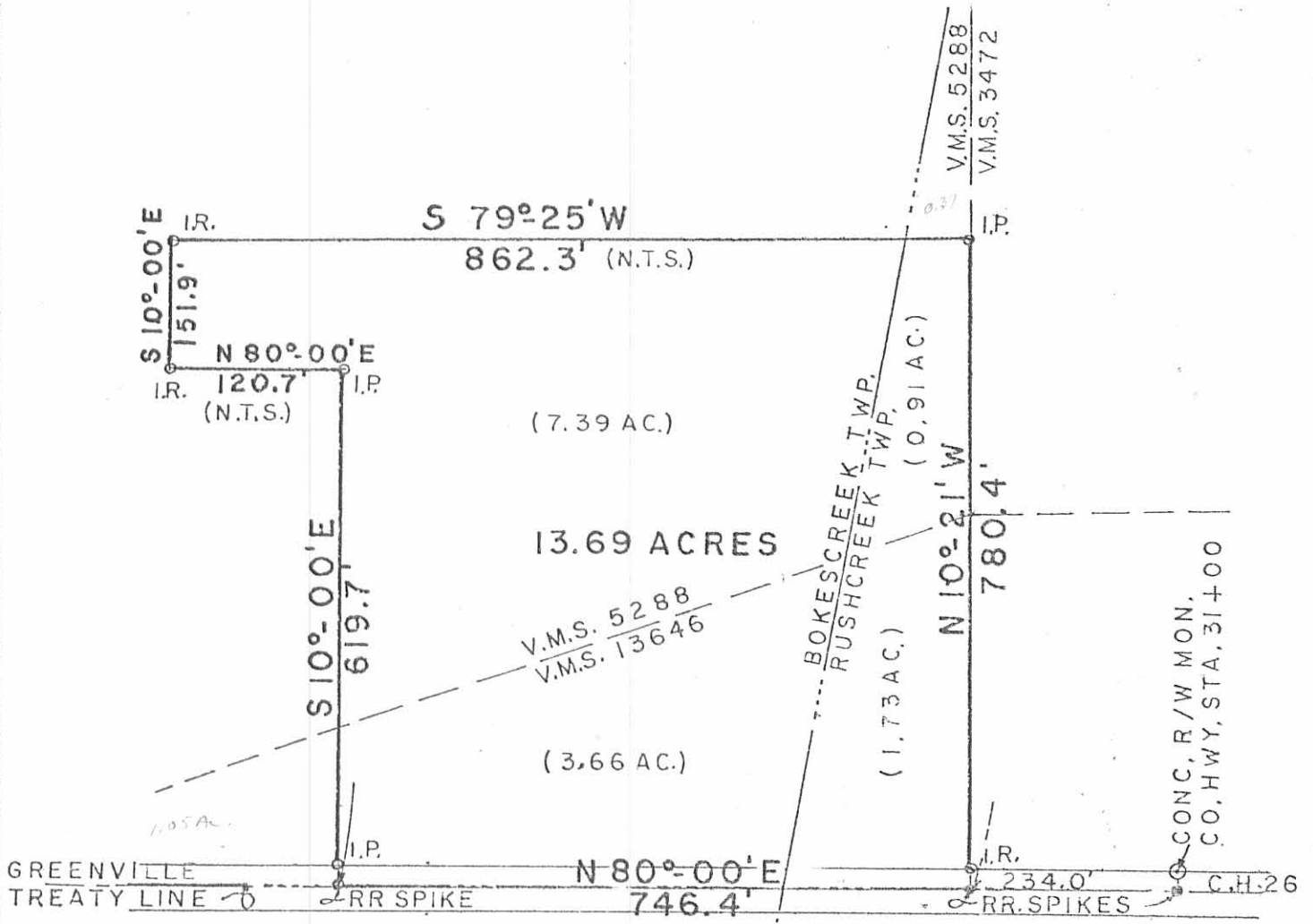
Reg. Surveyor 6181

April 29, 1976

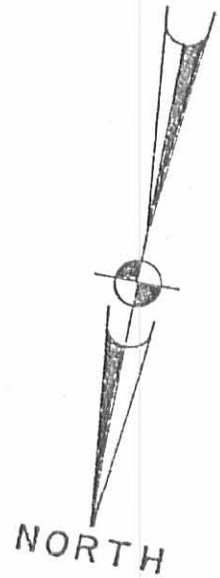


INDEXED ON MAP

5900 1D



GREENVILLE TREATY LINE - 0 RR SPIKE N 80°-00' E 746.4' RR SPIKES 234.0' C.H.26



SCALE 1" = 200'
 (5900) IP
 INDEXED ON MAP

SURVEY OF
 OUT OF A 61.08 ACRES
 (VOL. 343, PG. 332)
 V.M.S. 5288 & 13646
 BOKESCREEK AND
 RUSHCREEK TWPS.
 LOGAN COUNTY, OHIO

SURVEYED BY *Clayton M. Lee*
 CLAYTON M. LEE
 REG. SURVEYOR 6181

4-29-76