

Received 6-17-02 OK gch

# Lee Surveying and Mapping Co., Inc.

Land Surveys • Topography • Subdivisions • Construction Layout

117 N. Madriver St.  
Bellefontaine OH 43311



Phone: (937) 593-7335  
Fax: (937) 593-7444

## WALKER 150.854 ACRES

Lying in Virginia Military Survey 3326, Rushcreek and Jefferson Townships, Logan County, Ohio.

Being all of the remainder of the Julianna M. Walker original 164.508 acre tract and 4.249 acre tract as deeded and described in Official Record 258, Page 227, Tract II and Tract III of the Logan County Records of Deeds and being more particularly described as follows:

Beginning at a MAG nail found on the northeast corner of Virginia Military Survey 3326 at the intersection of the center-lines of Township Road 126 and Ohio Route 47 on Ohio Route 47 center-line station 1114+67.3 (Logan County Engineer's file L-49).

THENCE, with the east line of Virginia Military Survey 3326 and the center-line of Township Road 126 (40 feet wide), S 4°-46'-53" E, a distance of 1262.69 feet to a MAG nail set at the TRUE POINT OF BEGINNING.

THENCE, with the east line of Virginia Military Survey 3326 and the center-line of Township Road 126, S 4°-46'-53" E, a distance of 754.25 feet to a MAG nail set.

THENCE, with the north line of the Joseph Cronkleton original 51.379 acre tract (O.R. 211, Pg. 128), S 82°-46'-59" W, a distance of 2237.18 feet to a 5/8 inch iron rod found.

THENCE, with the west line of the said 51.379 acre tract, S 4°-48'-21" E, a distance of 936.35 feet to a 5/8 inch iron rod found.

THENCE, with the north line of the Carl D. Renkert original 125.43 acre tract (O.R. 537, Pg. 837, Tract I), S 85°-40'-14" W, a distance of 1535.46 feet to a 5/8 inch iron rod found.

THENCE, with the east lines of the Dale J. Bleininger 7.49 acre tract (O.R. 394, Pg. 903), the David G. McManus 2.835 acre tract (O.R. 260, Pg. 171) and the James M. Larson 2.840 acre tract (O.R. 525, Pg. 16), N 4°-32'-40" W, a distance of 1085.51 feet to a 5/8 inch iron rod found.

THENCE, with the east lines of the David E. Stone 3.23 acre tract (O.R. 294, Pg. 971) and the Gregory Frasure 1.53 acre tract (Vol. 404, Pg. 746), N 6°-50'-39" E, a distance of 790.20 feet to a 5/8 inch iron rod found.

THENCE, with the north line of the said 1.53 acre tract, N 88°-39'-41" W, a distance of 250.00 feet to a railroad spike found, passing a 5/8 inch iron rod found at 219.90 feet.

THENCE, with the center-line of Ohio Route 47 (60 feet wide), N 0°-04'-23" E, a distance of 60.11 feet to a MAG nail found.

THENCE, with the south line of the Julianna M. Walker 5.560 acre tract (O.R. 542, Pg. 948, Tract H), S 88°-41'-15" E, a distance of 299.99 feet to a 5/8 inch iron rod found, passing a 5/8 inch iron rod found at 30.10 feet.

THENCE, with the east line of the said 5.560 acre tract, N 0°-04'-26" W, a distance of 379.24 feet to a 5/8 inch iron rod set.

THENCE, with the east line of the said 5.560 acre tract, N 12°-58'-16" W, a distance of 463.72 feet to a 5/8 inch iron rod found.

THENCE, with the south line of the Julianna M. Walker 5.404 acre tract (O.R. 542, Pg. 952, Tract K) and the Julianna M. Walker 5.384 acre tract (O.R. 542, Pg. 954, Tract L), N 85°-38'-53" E, a distance of 1365.50 feet to a 5/8 inch iron rod found.

THENCE, with the lines of the Mary M. Hertenstein 40 acre tract (O.R. 32, Pg. 896, Parcel Three), the following four (4) courses:

S 4°-58'-55" E, a distance of 410.83 feet to 10 inch wood corner post found;

N 85°-22'-34" E, a distance of 982.90 feet to a stone found;

INDEXED ON MAP

59414D-1

# Lee Surveying and Mapping Co., Inc.

Land Surveys • Topography • Subdivisions • Construction Layout

117 N. Madriver St.  
Bellefontaine OH 43311



Phone: (937) 593-7335  
Fax: (937) 593-7444

S 6°-38'-53" E, a distance of 316.91 feet to a 5/8 inch iron rod set;

N 85°-50'-31" E, a distance of 1023.68 feet to a 5/8 inch iron rod set.

THENCE, with the west line of the Aaron C. Wren 1.017 acre tract (O.R. 51, Pg. 704),  
S 6°-11'-55" E, a distance of 218.93 feet to a 5/8 inch iron rod set.

THENCE, with the south line of the said 1.017 acre tract, N 87°-16'-14" E, a distance of 197.55 feet to the point of beginning, passing a 5/8 inch iron rod set at 177.54 feet.

Containing 150.854 acres, of which 0.389 acre is within the highway rights-of-way, 114.722 acres are in Rushcreek Township and 36.132 acres are in Jefferson Township.

The basis for bearings is the north line of Virginia Military Survey 3325, being N 85°-48'-31" E, and all other bearings are from angles and distances measured in a field survey by Lee Surveying and Mapping Co., Inc. on June 13, 2002.

Description prepared by:



ORIGINAL STAMP IN GREEN

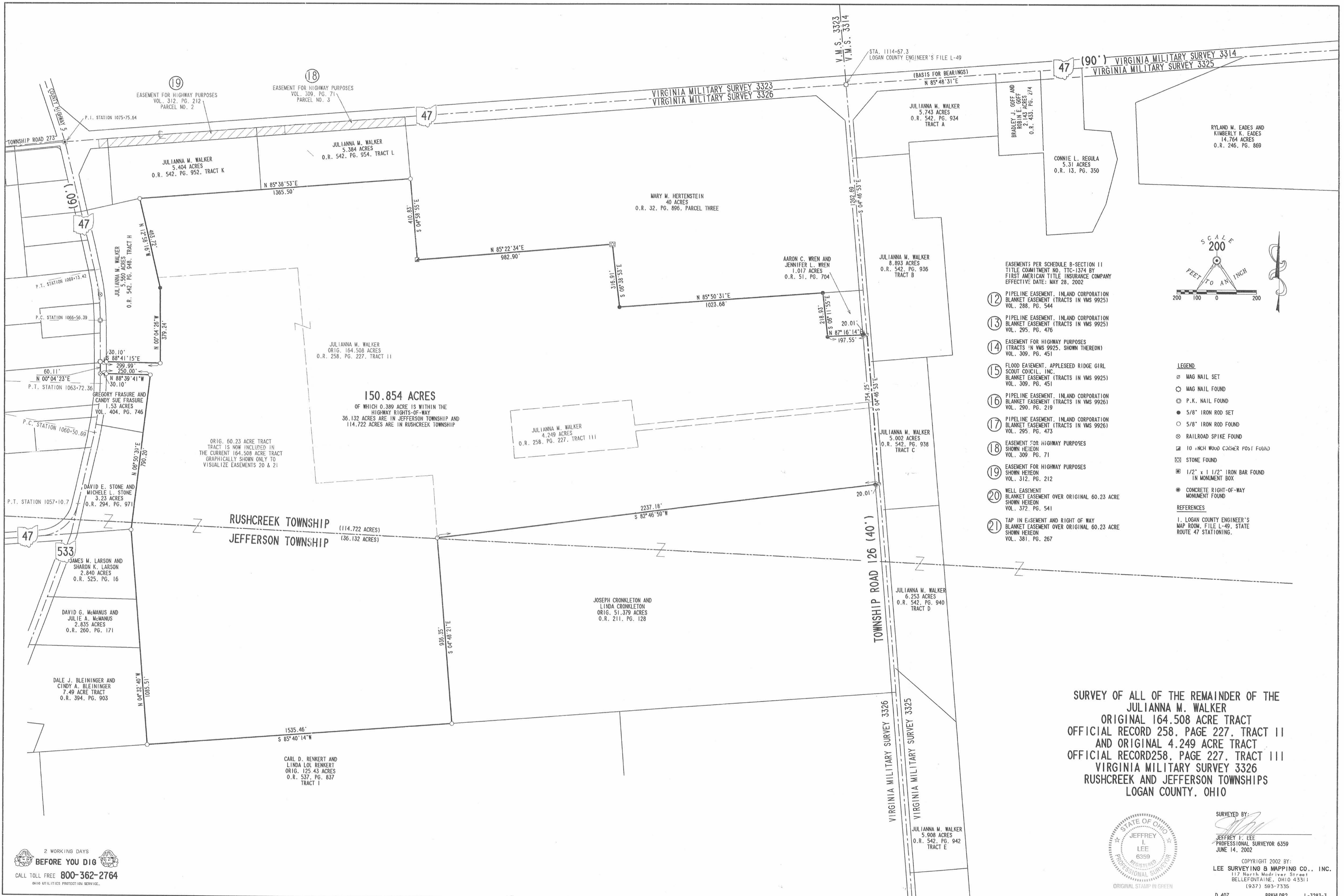
A handwritten signature in black ink, appearing to read 'J. Lee', written over the typed name and title.

Jeffrey I. Lee  
Professional Surveyor 6359  
June 14, 2002

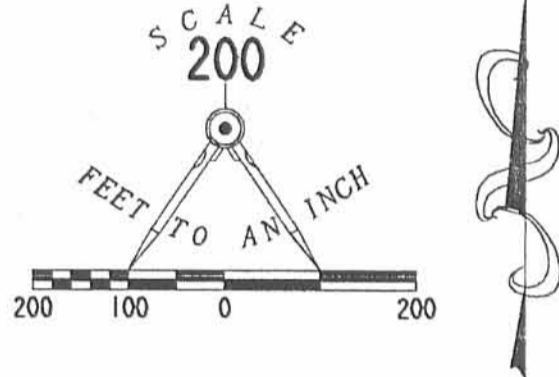
L-3283

INDEXED ON MAP  
5941 4D2





- EASEMENTS PER SCHEDULE B-SECTION 11  
TITLE COMMITMENT NO. TTC-1374 BY  
FIRST AMERICAN TITLE INSURANCE COMPANY  
EFFECTIVE DATE: MAY 28, 2002
- ⑫ PIPELINE EASEMENT, INLAND CORPORATION  
BLANKET EASEMENT (TRACTS IN VMS 9925)  
VOL. 288, PG. 544
  - ⑬ PIPELINE EASEMENT, INLAND CORPORATION  
BLANKET EASEMENT (TRACTS IN VMS 9925)  
VOL. 295, PG. 476
  - ⑭ EASEMENT FOR HIGHWAY PURPOSES  
(TRACTS IN VMS 9925, SHOWN THEREON)  
VOL. 309, PG. 451
  - ⑮ FLOOD EASEMENT, APPLESEED RIDGE GIRL  
SCOUT COUICIL, INC.  
BLANKET EASEMENT (TRACTS IN VMS 9925)  
VOL. 309, PG. 451
  - ⑯ PIPELINE EASEMENT, INLAND CORPORATION  
BLANKET EASEMENT (TRACTS IN VMS 9926)  
VOL. 290, PG. 219
  - ⑰ PIPELINE EASEMENT, INLAND CORPORATION  
BLANKET EASEMENT (TRACTS IN VMS 9926)  
VOL. 295, PG. 473
  - ⑱ EASEMENT FOR HIGHWAY PURPOSES  
SHOWN HEREON  
VOL. 309, PG. 71
  - ⑲ EASEMENT FOR HIGHWAY PURPOSES  
SHOWN HEREON  
VOL. 312, PG. 212
  - ⑳ WELL EASEMENT  
BLANKET EASEMENT OVER ORIGINAL 60.23 ACRE  
SHOWN HEREON  
VOL. 372, PG. 541
  - ㉑ TAP IN EASEMENT AND RIGHT OF WAY  
BLANKET EASEMENT OVER ORIGINAL 60.23 ACRE  
SHOWN HEREON  
VOL. 381, PG. 267



- LEGEND**
- ⊗ MAG NAIL SET
  - ⊙ MAG NAIL FOUND
  - ⊙ P.K. NAIL FOUND
  - ⊙ 5/8" IRON ROD SET
  - ⊙ 5/8" IRON ROD FOUND
  - ⊙ RAILROAD SPIKE FOUND
  - ⊙ 10 INCH WOOD CORNER POST FOUND
  - ⊙ STONE FOUND
  - ⊙ 1/2" x 1 1/2" IRON BAR FOUND  
IN MONUMENT BOX
  - ⊙ CONCRETE RIGHT-OF-WAY  
MONUMENT FOUND
- REFERENCES**
- 1. LOGAN COUNTY ENGINEER'S  
MAP ROOM, FILE L-49, STATE  
ROUTE 47 STATIONING.

**SURVEY OF ALL OF THE REMAINDER OF THE  
JULIANNA M. WALKER  
ORIGINAL 164.508 ACRE TRACT  
OFFICIAL RECORD 258, PAGE 227, TRACT II  
AND ORIGINAL 4.249 ACRE TRACT  
OFFICIAL RECORD 258, PAGE 227, TRACT III  
VIRGINIA MILITARY SURVEY 3326  
RUSHCREEK AND JEFFERSON TOWNSHIPS  
LOGAN COUNTY, OHIO**



SURVEYED BY:  
*Jeffrey L. Lee*  
JEFFREY L. LEE  
PROFESSIONAL SURVEYOR 6359  
JUNE 14, 2002

COPYRIGHT 2002 BY:  
LEE SURVEYING & MAPPING CO., INC.  
117 North Medivier Street  
BELLEFONTAINE, OHIO 43311  
(937) 593-7335

2 WORKING DAYS  
**BEFORE YOU DIG**  
CALL TOLL FREE 800-362-2764  
OHIO UTILITIES PROTECTION SERVICE.

INDEXED ON MAP  
5971 4E

# Lee Surveying and Mapping Co., Inc.

Land Surveys • Topography • Subdivisions • Construction Layout

117 N. Madriver St.  
Bellefontaine OH 43311



Phone: (937) 593-7335  
Fax: (937) 593-7444

## WALKER 5.560 ACRES TRACT H

Lying in Virginia Military Survey 3326, Rushcreek Township, Logan County, Ohio.

Being out of the Julianna M. Walker 164.508 acre tract as deeded and described in Official Record 258, Page 227, Tract II of the Logan County Records of Deeds and being more particularly described as follows:

Beginning at a 1/2 inch by 1-1/2 inch iron bar found in a monument box assembly on the north line of Virginia Military Survey 3326 at the intersection of the center-lines of County Highway 5 and Ohio Route 47 on Ohio Route 47 center-line station 1075+75.64 (Logan County Engineer's File L-49).

THENCE, with the center-line of Ohio Route 47 (varied width), S 12°-58'-16" E, a distance of 361.04 feet to a MAG nail set at the TRUE POINT OF BEGINNING.

THENCE, N 77°-01'-44" E, a distance of 300.00 feet to a 5/8 inch iron rod set, passing a 5/8 inch iron rod set at 30.24 feet.

THENCE, S 12°-58'-16" E, a distance of 463.72 feet to a 5/8 inch iron rod set.

THENCE, S 0°-04'-26" E, a distance of 379.24 feet to a 5/8 inch iron rod set.

THENCE, N 88°-39'-54" W, a distance of 300.00 feet to a MAG nail set, passing a 5/8 inch iron rod set at 269.99 feet.

THENCE, with the center-line of Ohio Route 47, the following three (3) courses:

N 0°-04'-26" W, a distance of 208.33 feet to a P.K. nail found at P.C. Station 1066+56.39.

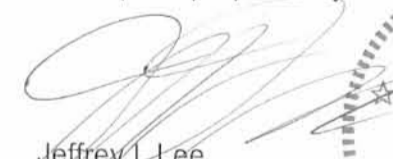
With a curve to the left having a central angle of 12°-53'-50", a radius of 1143.27 feet, an arc length of 257.35 feet and having a chord bearing N 6°-31'-21" W, a distance of 256.81 feet to a P.K. nail found at P.T. Station 1069+13.42.

N 12°-58'-16" W, a distance of 301.00 feet to the point of beginning.

Containing 5.560 acres, of which 0.518 acre is within the highway right-of-way.

The basis for bearings is the center-line of Ohio Route 47 south of P.C. Station 1066+56.39, being N 0°-04'-26" W, and all other bearings are from angles and distances measured in a field survey by Lee Surveying and Mapping Co., Inc. on December 12, 2001.

Description prepared by:

  
Jeffrey I. Lee  
Professional Surveyor 6359  
December 17, 2001



L-3283

ORIGINAL STAMP IN GREEN

INDEXED ON MAP  
5941 60-1

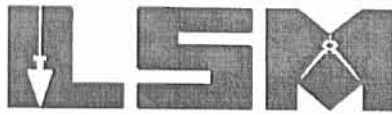


Received 12-28 01 original

# Lee Surveying and Mapping Co., Inc.

Land Surveys • Topography • Subdivisions • Construction Layout

117 N. Madriver St.  
Bellefontaine OH 43311



Phone: (937) 593-7335  
Fax: (937) 593-7444

## WALKER 1.477 ACRES TRACT J

Lying in Virginia Military Survey 3326, Rushcreek Township, Logan County, Ohio.

Being out of the Julianna M. Walker 164.508 acre tract as deeded and described in Official Record 258, Page 227, Tract II of the Logan County Records of Deeds and being more particularly described as follows:

Beginning at a 1/2 inch by 1-1/2 inch iron bar found in a monument box assembly on the north line of Virginia Military Survey 3326 at the intersection of the center-lines of County Highway 5 and Ohio Route 47 on Ohio Route 47 center-line station 1075+75.64 (Logan County Engineer's File L-49).

THENCE, with the center-line of Ohio Route 47 (varied width), N 85°-38'-53" E, a distance of 212.65 feet to a MAG nail set.

THENCE, S 4°-21'-08" E, a distance of 332.93 feet to a 5/8 inch iron rod set, passing a 5/8 inch iron rod set at 45.00 feet.

THENCE, S 77°-01'-44" W, a distance of 160.36 feet to a MAG nail set, passing a 5/8 inch iron rod set at 130.12 feet.

THENCE, with the center-line of Ohio Route 47, N 12°-58'-16" W, a distance of 361.04 feet to the point of beginning.

Containing 1.477 acres, of which 0.555 acre is within the highway right-of-way.

The basis for bearings is the center-line of Ohio Route 47 south of P.C. Station 1066+56.39, being N 0°-04'-26" W, and all other bearings are from angles and distances measured in a field survey by Lee Surveying and Mapping Co., Inc. on December 12, 2001.

Description prepared by:

Jeffrey I. Lee  
Professional Surveyor 6359  
December 17, 2001



L-3283

ORIGINAL STAMP IN GREEN

INDEXED ON MAP  
5941 502

Revised 12-28-01 JAL/gh

# Lee Surveying and Mapping Co., Inc.

Land Surveys • Topography • Subdivisions • Construction Layout

117 N. Madriver St.  
Bellefontaine OH 43311



Phone: (937) 593-7335  
Fax: (937) 593-7444

## WALKER 5.404 ACRES TRACT K

Lying in Virginia Military Survey 3326, Rushcreek Township, Logan County, Ohio.

Being out of the Julianna M. Walker 164.508 acre tract as deeded and described in Official Record 258, Page 227, Tract II of the Logan County Records of Deeds and being more particularly described as follows:

Beginning at a 1/2 inch by 1-1/2 inch iron bar found in a monument box assembly on the north line of Virginia Military Survey 3326 at the intersection of the center-lines of County Highway 5 and Ohio Route 47 on Ohio Route 47 center-line station 1075+75.64 (Logan County Engineer's File L-49).

THENCE, with the north line of Virginia Military Survey 3326 and the center-line of Ohio Route 47 (varied width), N 85°-38'-53" E, a distance of 212.65 feet to a MAG nail set at the TRUE POINT OF BEGINNING.

THENCE, with the north line of Virginia Military Survey 3326 and the center-line of Ohio Route 47, N 85°-38'-53" E, a distance of 750.00 feet to a MAG nail set

THENCE, S 4°-21'-08" E, a distance of 312.00 feet to a 5/8 inch iron rod set, passing a 5/8 inch iron rod set at 45.00 feet.

THENCE, S 85°-38'-53" W, a distance of 611.93 feet to a 5/8 inch iron rod set.

THENCE, S 77°-01'-44" W, a distance of 139.64 feet to a 5/8 inch iron rod set.

THENCE, N 4°-21'-08" W, a distance of 332.93 feet to the point of beginning, passing a 5/8 inch iron rod set at 287.93 feet.

Containing 5.404 acres, of which 0.775 acre is within the highway right-of-way.

The basis for bearings is the center-line of Ohio Route 47 south of P.C. Station 1066+56.39, being N 0°-04'-26" W, and all other bearings are from angles and distances measured in a field survey by Lee Surveying and Mapping Co., Inc. on December 12, 2001.

Description prepared by:

Jeffrey I. Lee  
Professional Surveyor 6359  
December 17, 2001



ORIGINAL STAMP IN GREEN

L-3283

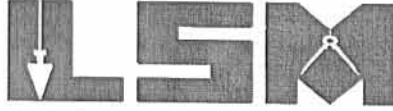
INDEXED ON MAP  
5941 50-3

Received 12-26-01 OK 9:11

# Lee Surveying and Mapping Co., Inc.

Land Surveys • Topography • Subdivisions • Construction Layout

117 N. Madriver St.  
Bellefontaine OH 43311



Phone: (937) 593-7335  
Fax: (937) 593-7444

## WALKER 5.384 ACRES TRACT L

Lying in Virginia Military Survey 3326, Rushcreek Township, Logan County, Ohio.

Being out of the Julianna M. Walker 164.508 acre tract as deeded and described in Official Record 258, Page 227, Tract II of the Logan County Records of Deeds and being more particularly described as follows:

Beginning at a 1/2 inch by 1-1/2 inch iron bar found in a monument box assembly on the north line of Virginia Military Survey 3326 at the intersection of the center-lines of County Highway 5 and Ohio Route 47 on Ohio Route 47 center-line station 1075+75.64 (Logan County Engineer's File L-49).

THENCE, with the north line of Virginia Military Survey 3326 and the center-line of Ohio Route 47 (varied width), N 85°-38'-53" E, a distance of 962.65 feet to a MAG nail set at the TRUE POINT OF BEGINNING.

THENCE, with the north line of Virginia Military Survey 3326 and the center-line of Ohio Route 47, N 85°-38'-53" E, a distance of 750.00 feet to a MAG nail set

THENCE, with the west line of the Mary Hertenstien 40 acre tract (O.R. 32, Pg. 896, Parcel Three), S 5°-00'-29" E, a distance of 312.02 feet to a 5/8 inch iron rod set, passing a 5/8 inch iron rod set at 45.00 feet.


THENCE, S 85°-38'-53" W, a distance of 753.57 feet to a 5/8 inch iron rod set.

THENCE, N 4°-21'-08" W, a distance of 312.00 feet to the point of beginning, passing a 5/8 inch iron rod set at 267.00 feet.

Containing 5.384 acres, of which 0.775 acre is within the highway right-of-way.

The basis for bearings is the center-line of Ohio Route 47 south of P.C. Station 1066+56.39, being N 0°-04'-26" W, and all other bearings are from angles and distances measured in a field survey by Lee Surveying and Mapping Co., Inc. on December 12, 2001.

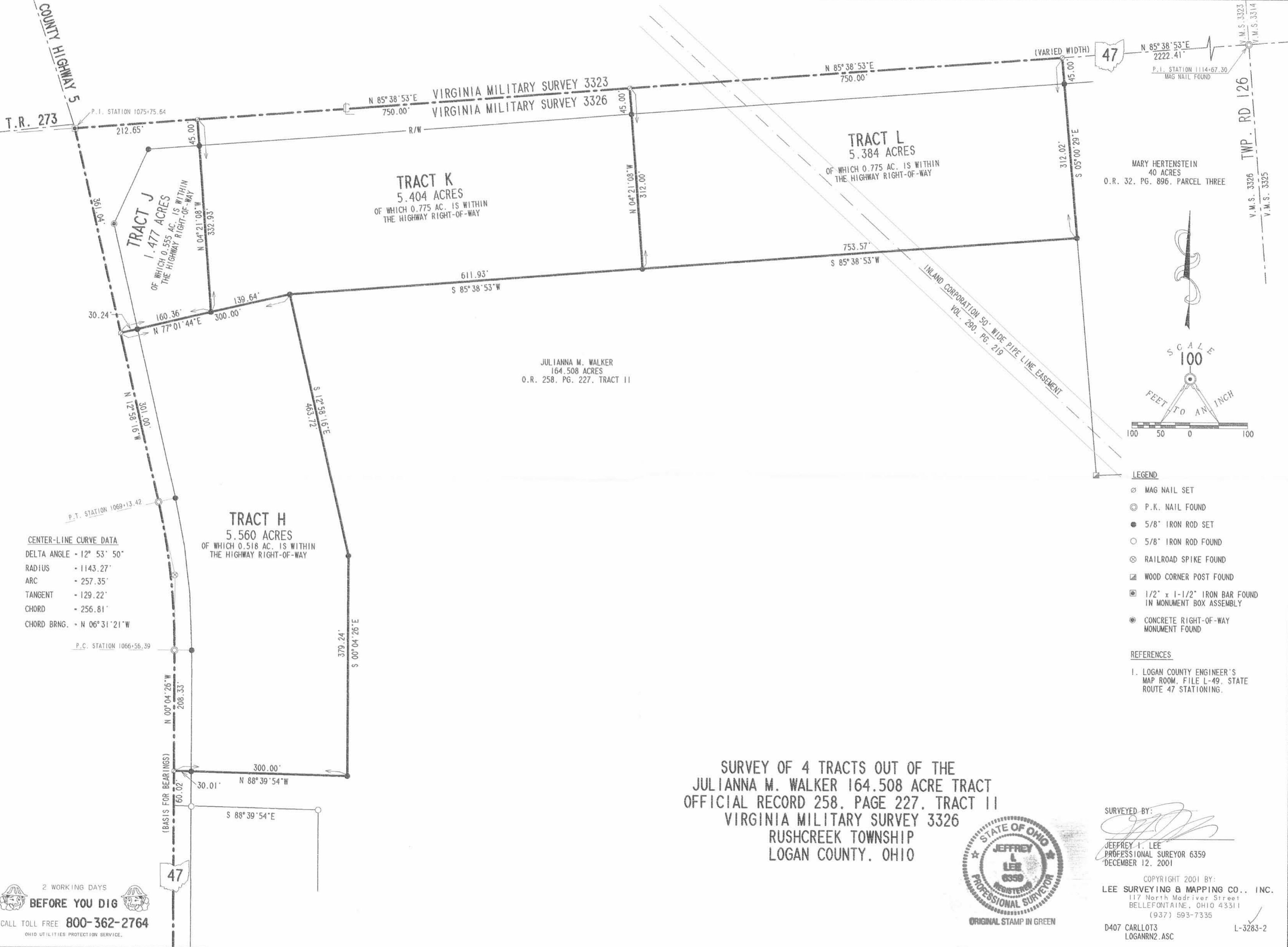
Description prepared by:

  
Jeffrey I. Lee  
Professional Surveyor 6359  
December 17, 2001



L-3283

INDEXED ON MAP  
5941 5/24



**CENTER-LINE CURVE DATA**  
 DELTA ANGLE - 12° 53' 50"  
 RADIUS - 1143.27'  
 ARC - 257.35'  
 TANGENT - 129.22'  
 CHORD - 256.81'  
 CHORD BRNG. - N 06° 31' 21" W

- LEGEND**
- ⊗ MAG NAIL SET
  - ⊙ P.K. NAIL FOUND
  - 5/8" IRON ROD SET
  - 5/8" IRON ROD FOUND
  - ⊗ RAILROAD SPIKE FOUND
  - ⊠ WOOD CORNER POST FOUND
  - ⊠ 1/2" x 1-1/2" IRON BAR FOUND IN MONUMENT BOX ASSEMBLY
  - ⊙ CONCRETE RIGHT-OF-WAY MONUMENT FOUND

**REFERENCES**  
 1. LOGAN COUNTY ENGINEER'S MAP ROOM, FILE L-49, STATE ROUTE 47 STATIONING.

SURVEY OF 4 TRACTS OUT OF THE  
 JULIANNA M. WALKER 164.508 ACRE TRACT  
 OFFICIAL RECORD 258, PAGE 227, TRACT II  
 VIRGINIA MILITARY SURVEY 3326  
 RUSHCREEK TOWNSHIP  
 LOGAN COUNTY, OHIO



SURVEYED BY:  
*Jeffrey I. Lee*  
 JEFFREY I. LEE  
 PROFESSIONAL SURVEYOR 6359  
 DECEMBER 12, 2001

COPYRIGHT 2001 BY:  
 LEE SURVEYING & MAPPING CO., INC.  
 117 North Madriver Street  
 BELLEFONTAINE, OHIO 43311  
 (937) 593-7335  
 D407 CARLLOT3  
 LOGANR2.ASC  
 L-3283-2

2 WORKING DAYS  
**BEFORE YOU DIG**  
 CALL TOLL FREE 800-362-2764  
 OHIO UTILITIES PROTECTION SERVICE.

INDEXED ON MAP  
 5941 68