

Received 9-11-87 OK (CR)

**LESLIE H. GEESLIN**  
REGISTERED SURVEYOR NO. 5248  
P O. BOX 274  
RUSHSYLVANIA, OHIO 43347

TELEPHONE: (513) 468-2793

DEAL SURVEY

SEPTEMBER, 1987

The following described real estate situated in the State of Ohio, County of Logan, Township of Rushcreek, being part of Virginia Military Surveys 9952 and 9953 and more particularly described as follows;

Beginning at a railroad spike in the centerline of County Highway 111 that is S. 79° 23' W. (this bearing is assumed and all other bearings are from angles and distances measured in this field survey) 969.74 feet from the southeast corner of R. D. Troyer's 58.12 acre tract as described in O. R. Vol. 10 Page 458.

Thence with said centerline S. 79° 23' W. 25.00 feet to a 1 inch iron bar at the southeast corner of said Troyers 27.16 acre tract.

Thence with said centerline S. 79° 08' 20" W. 5.00 feet to a railroad spike.

Thence N. 12° 20' W. 293.55 feet to a 0.625 inch iron bar, passing a 0.625 inch iron bar at 25.00 feet.

Thence N. 10° 46' 37" W. 523.84 feet to a 0.625 inch iron bar.

Thence N. 77° 40' E. 232.74 feet to a 0.625 inch iron bar.

Thence S. 10° 46' 37" E. 523.84 feet to a 0.625 inch iron bar.

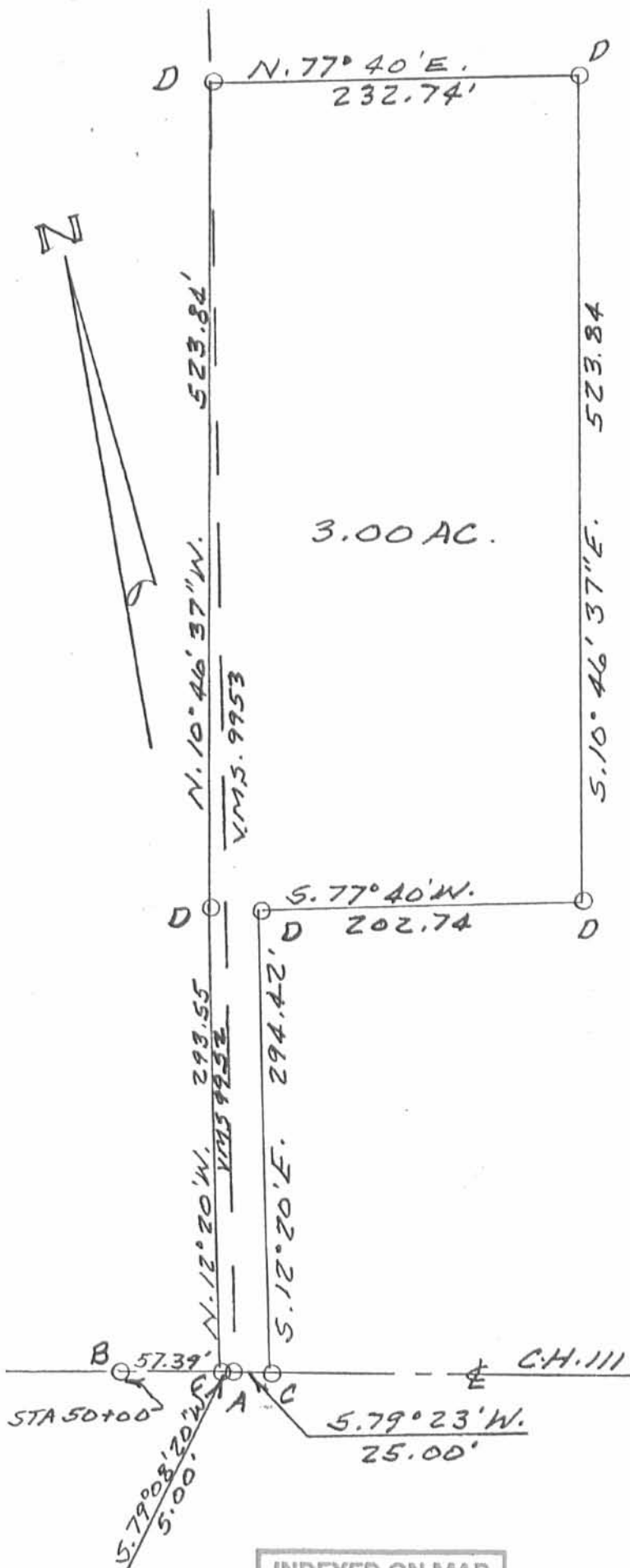
Thence S. 77° 40' W. 202.74 feet to a 0.625 inch iron bar.

Thence S. 12° 20' E. 294.42 feet to the place of beginning.

Containing 3.00 acres more or less of which 0.05 acre is in R. D. Troyer's 27.16 acre tract in V. M. S. 9952 and 2.95 acres are in said Troyer's 58.12 acre tract in V. M. S. 9953.



*Leslie H. Geeslin*



LEGEND :  
 A = 1" IRON BAR FD  
 B = IR. SPIKE FD  
 C = IR. SPIKE SET  
 D = 5/8" IRON BAR SET

SURVEY OF 3.00 AC. TRACT  
 IN VIRGINIA MILITARY SURVEYS  
 NO. 9952 & 9953, RUSHCREEK  
 TWP., LOGAN COUNTY, OHIO  
 FOR ROBERT DEAL.  
 SEPTEMBER, 1987  
 SCALE: 1" = 100'

INDEXED ON MAP  
 7677 1P



*Leslie H. Geeslin*  
 LESLIE H. GEESLIN  
 RUSHSVLVANIA, OHIO

RECEIVED 6-8-88 OK JGH

LESLIE H. GEESLIN  
REGISTERED SURVEYOR NO. 5248  
P. O. BOX 274  
RUSHSVLVANIA, OHIO 43347  
TELEPHONE: (513) 468-2793

TROYER SURVEY  
June 1988

The following described Real estate situated in the State of Ohio, County of Logan, Township of Rushcreek, being part of Virginia Military Survey 9953. And more particularly described as follows:

Beginning at a railroad spike in the centerline of County Highway 111 at the southeast corner of Robert Deal's 3.00 acre tract as described in O.R. Volume 53 Page 163.

Thence with said Deal's east line N. 12° 20' W. 294.42 feet to a 0.625 inch iron bar.

Thence with said Deal's south line N. 77° 40' E (This bearing is assumed and all other bearings are from angles and distances measured in this field survey) 202.74 feet to a 0.625 inch iron bar.

Thence with said Deal's east line N. 10° 46' 37" W. 523.84 feet to a 0.625 inch iron bar.

Thence N. 77° 40' E. 270.00 feet to a 0.625 inch iron bar.

Thence S. 10° 46' 37" E. 523.84 feet to a 0.625 inch iron bar.

Thence N. 77° 40' E. 508.46 feet to a 0.625 inch iron bar in the west line of Ron Stump's 4.00 acre tract as described in O.R. Volume 10 Page 468.

Thence with said Stump's west line S. 10° 09' 06" E. 323.70 feet to a P.K. nail in the centerline of said County Highway 111.

Thence with said centerline S. 79° 23' W. 969.35 feet to the place of beginning.

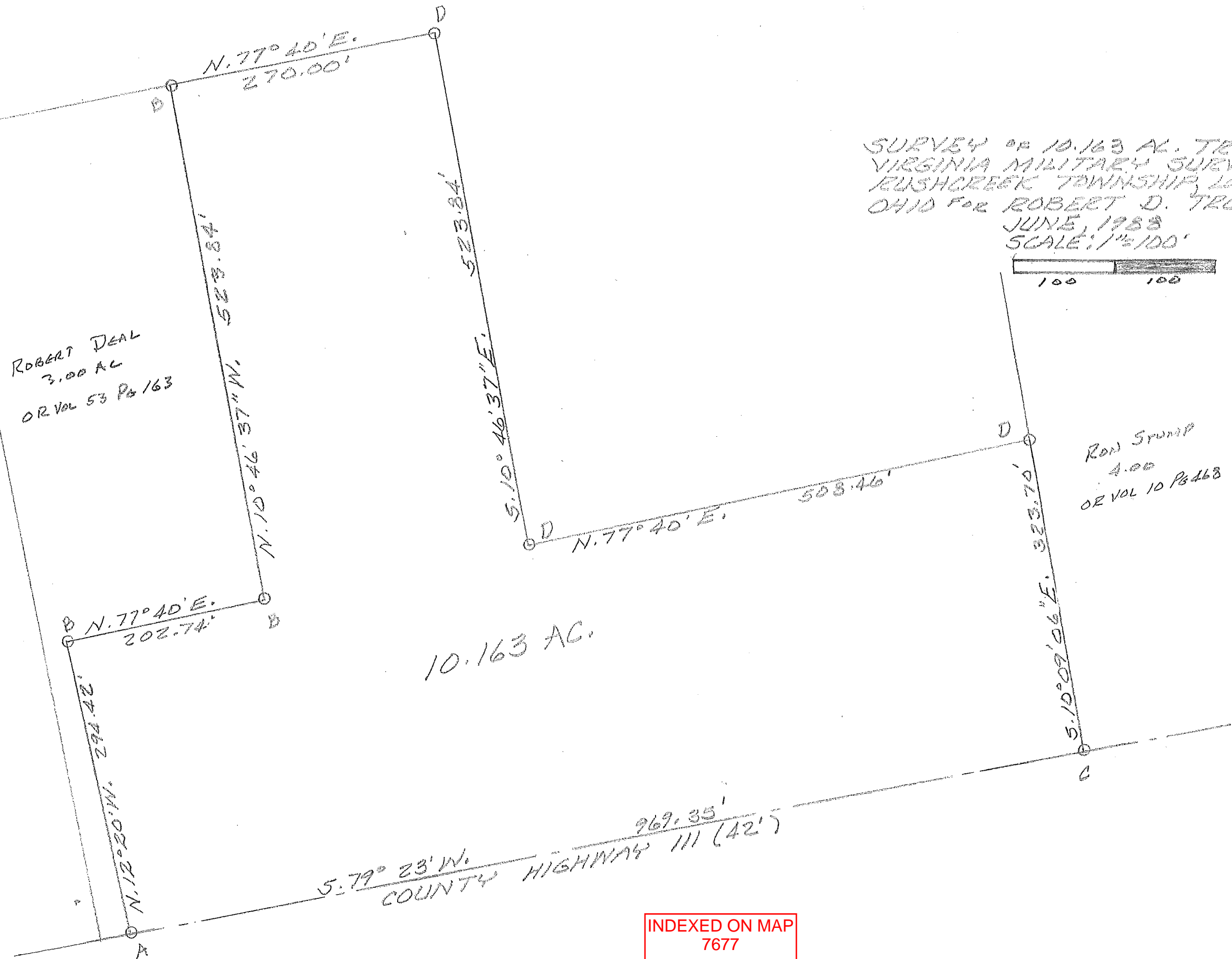
Containing 10.163 acres more or less.

The above described 10.163 acre tract being on the southside of Robert D. Troyer's 58.12 acre tract as described in O.R. Volume 10 Page 458.



INDEXED ON MAP  
7677 2D

*Leslie H. Geeslin*



ROBERT DEAL  
3.00 AC  
OR VOL 53 Pg 163

10.163 AC.

RON STUMP  
4.00  
OR VOL 10 Pg 468

SURVEY OF 10.163 AC. TRACT IN  
VIRGINIA MILITARY SURVEY 9952,  
RUSHCREEK TOWNSHIP, LOGAN COUNTY,  
OHIO FOR ROBERT D. TROYER,  
JUNE, 1988  
SCALE: 1"=100'

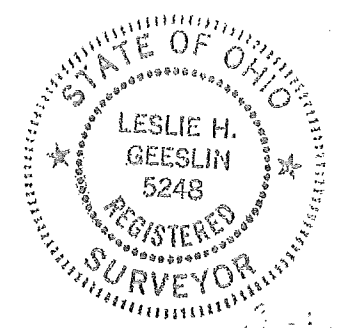


LEGEND:  
A=RR.SPK. FD.  
B=9/8" IRON BAR FD.  
C=PK. NAIL FD.  
D=9/8" IRON BAR SET




5.79° 23' W.  
COUNTY HIGHWAY 111 (42')

INDEXED ON MAP  
7677



Leslie H. Geeslin  
LESLIE H. GEESLIN  
RUSHCREEK TOWNSHIP, OHIO

# Lee Surveying and Mapping Co., Inc.

 **APPROVED** Land Surveys • Topography • Subdivisions • Construction Layout

117 N. Madriver St.  
Bellefontaine OH 43311



Phone: (937) 593-7335  
Fax: (937) 593-7444  
surveys@lsmcinc.us

## TROYER 106.292 ACRES

Lying in Virginia Military Surveys 9952 and 9953, Rushcreek Township, Logan County, Ohio.

Being all of the remainder of the Hollice R. Troyer original 86.68 acre tract, 1.03 acre tract, 27.34 acre tract and 27.43 acre tract as deeded and described in Official Record 292, Page 207, Tract No's. 1, 2, 3 and 4 of the Logan County Record's of Deeds and being more particularly described as follows:

Commencing on a railroad spike found on the south line of Virginia Military Survey 9952 and the center-line of County Highway 111 at Station 30+00 (Logan County Engineer's Field Book 707, Page 6).

THENCE, with the south line of Virginia Military Survey 9952 and the center-line of County Highway 111 (42 feet wide), N 79°-51'-48"E, a distance of 726.86 feet to a railroad spike found at the TRUE POINT OF BEGINNING.

THENCE, with the east line of the Robert W. Givens 5.799 acre tract (O.R. 1001, Pg. 978), N 09°-53'-27"W, a distance of 1681.69 feet to a 5/8 inch iron rod found, passing a 5/8 inch iron rod found at 20.97 feet.

THENCE, with the south lines of the Philip B. Miller 32.907 acre tract (O.R. 860, Pg. 508) and the Gregory A. Litteral 21.910 acre tract (O.R. 907, Pg. 511), N 81°-42'-29"E, a distance of 1327.53 feet to a stone found on the east line of Virginia Military Survey 9952 and west line of Virginia Military Survey 9953.

THENCE, with the east line of Virginia Military Survey 9952 and west line of Virginia Military Survey 9953 and the east line of the said 21.910 acre tract, N 10°-11'-02"W, a distance of 957.00 feet to a 8 inch wood corner post found, passing a 5/8 inch iron rod set at 956.50 feet.

THENCE, with the south lines of the Leon H. Troyer and Ruth A. Troyer, as trustees, original 15.32 acre tract (O.R. 790, Pg. 116, Tract I) and the Lucas D. Gingerich 31.177 acre tract (O.R. 418, Pg. 096), N 79°-37'-35"E, a distance of 1007.96 feet to a 5/8 inch iron rod set.

THENCE, with the west lines of the Graber Family Limited Partnerships, 24.4 acre tract and 4.00 acre tract (O.R. 1074, Pg. 907, Tract II and Tract I), S 09°-53'-16"E, a distance of 2593.01 feet to a MAG nail set on the south line of Virginia Military Survey 9953 and the center-line of County Highway 111, passing a 5/8 inch iron rod found at 2572.11 feet.

THENCE, with the south line of Virginia Military Survey 9953 and the center-line of County Highway 111, S 79°-41'-37"W, a distance of 969.43 feet to a railroad spike found.

THENCE, with the lines of the Robert L. Deal 3.00 acre tract (O.R. 53, Pg. 163), the following six courses:

N 12°-00'-23"W, a distance of 294.26 feet to a 5/8 inch iron rod found, passing a 5/8 inch iron rod set at 21.00 feet.

# Lee Surveying and Mapping Co., Inc.

Land Surveys • Topography • Subdivisions • Construction Layout

117 N. Madriver St.  
Bellefontaine OH 43311



Phone: (937) 593-7335  
Fax: (937) 593-7444  
surveys@lsminc.us

N 77°-56'-21"E, a distance of 202.67 feet to a 5/8 inch iron rod found.

N 10°-26'-56"W, a distance of 523.99 feet to a 5/8 inch iron rod found.

S 77°-55'-54"W, a distance of 232.84 feet to a 5/8 inch iron rod found.

S 10°-27'-18"E, a distance of 523.58 feet to a 5/8 inch iron rod found.

S 12°-03'-10"E, a distance of 293.73 feet to a railroad spike found on the south line of Virginia Military Survey 9952 and the center-line of County Highway 111, passing a 5/8 inch iron pipe found at 268.70 feet.

THENCE, with the south line of Virginia Military Survey 9952 and the center-line of County Highway 111, S 79°-30'-03"W, a distance of 637.06 feet to a railroad spike found.

THENCE, with the lines of the Donna Lee Noelani Young 1.00 acre tract (O.R. 1019, Pg. 39), the following three courses:

N 10°-07'-38"W, a distance of 208.44 feet to a 5/8 inch iron rod found, passing a 5/8 inch iron rod found at 22.59 feet.

S 79°-54'-29"W, a distance of 208.78 feet to a 5/8 inch iron rod found.

S 10°-09'-38"E, a distance of 208.74 feet to a railroad spike found on the south line of Virginia Military Survey 9952 and the center-line of County Highway 111, passing a 5/8 inch iron rod found at 186.24 feet.

THENCE, with the south line of Virginia Military Survey 9952 and the center-line of County Highway 111, S 79°-51'-48"W, a distance of 484.95 feet to the point of beginning.

Containing 106.292 acres, of which 1.009 acres are within the highway right-of-way. There are 49.455 acres within Virginia Military Survey 9952 and 56.837 acres within Virginia Military Survey 9953.

Property is subject to any and all previous easements and rights-of-way of record.

The basis for bearings is the south line of Virginia Military Survey 9952, being N 79°-51'-48"E, and all other bearings are from angles and distances measured in a field survey by Lee Surveying and Mapping Co., Inc. on November 15, 2013.



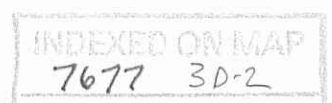
ORIGINAL STAMP IN GREEN

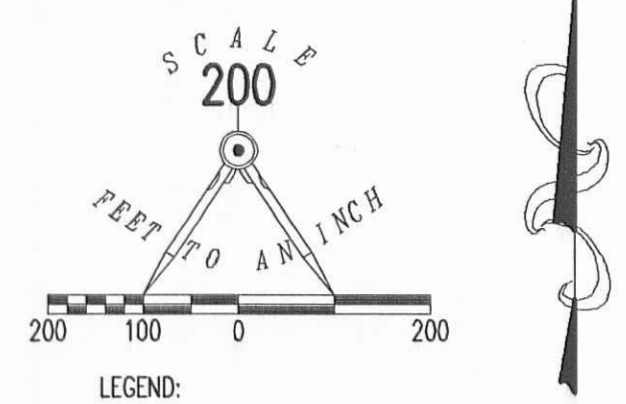
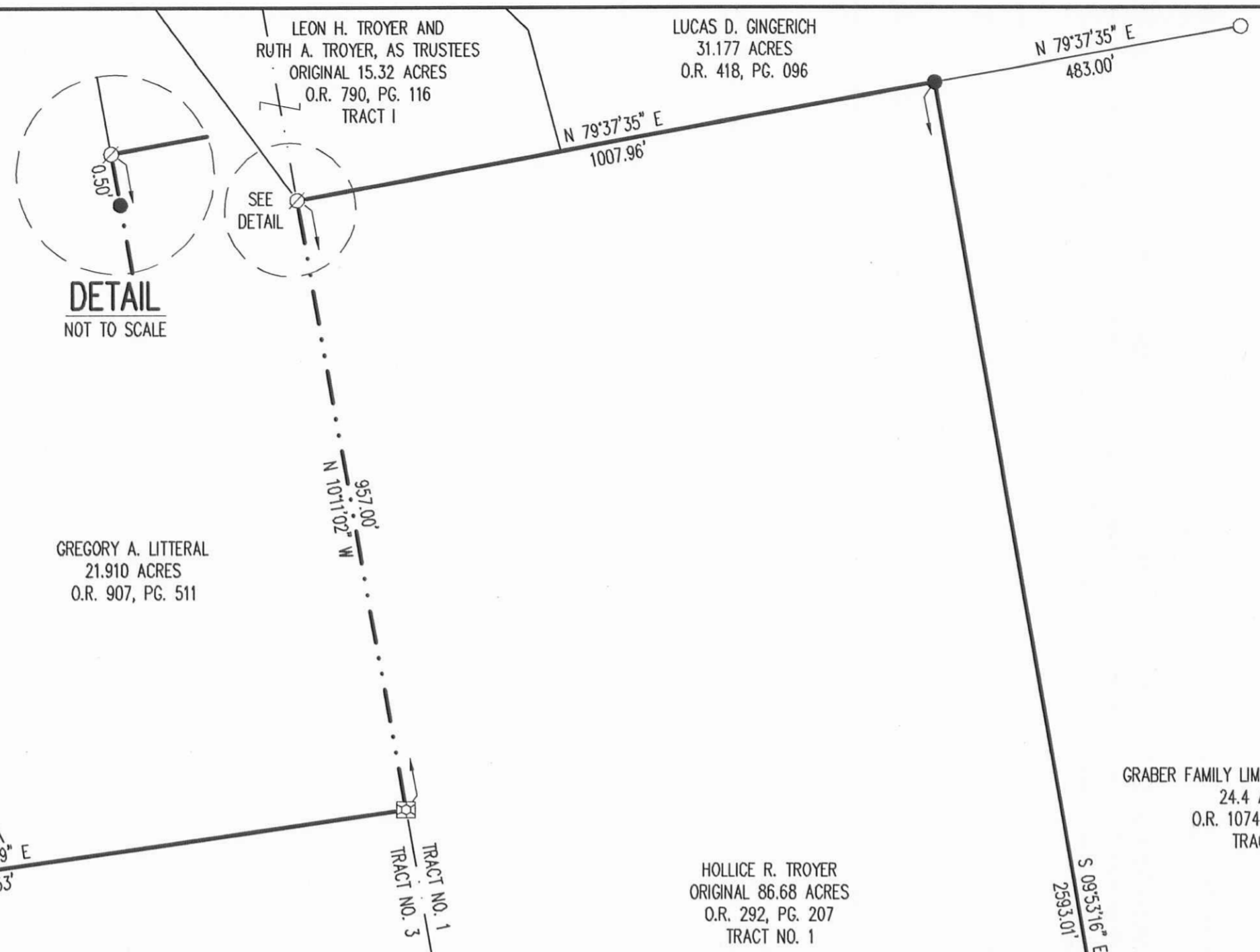
Description prepared by:

A handwritten signature in black ink that reads 'William K. Bruce'.

William K. Bruce  
Professional Surveyor 7437  
November 18, 2013

56421013





**SURVEY OF THE REMAINDER OF THE  
 HOLLICE R. TROYER  
 ORIGINAL 86.68 ACRE TRACT, 1.03 ACRE TRACT,  
 27.34 ACRE TRACT AND 27.43 ACRE TRACT  
 OFFICIAL RECORD 292, PAGE 207  
 TRACT NO'S. 1, 2, 3 AND 4  
 VIRGINIA MILITARY SURVEYS 9952 AND 9953  
 RUSHCREEK TOWNSHIP  
 LOGAN COUNTY, OHIO**

GRABER FAMILY LIMITED PARTNERSHIPS  
 4.00 ACRES  
 O.R. 1074, PG. 907  
 TRACT I



**COUNTY HIGHWAY 111 (42')**

SURVEYED BY:  
  
 WILLIAM K. BRUCE  
 PROFESSIONAL SURVEYOR 7437  
 NOVEMBER 15, 2013



COPYRIGHT 2013 BY:  
**LEE SURVEYING & MAPPING CO., INC.**  
 117 North Modriver Street  
 BELLEFONTAINE, OHIO 43311  
 (937) 593-7335  
 WWW.LSMINC.US  
 surveys@lsminc.us  
 KSS D1013 56421013 L-5642-2

