

# Lee Surveying and Mapping Co., Inc.

Land Surveys • Topography • Subdivisions • Construction Layout

117 N. Madriver St.  
Bellefontaine OH 43311



Phone: (937) 593-7335  
Fax: (937) 593-7444

## HERRIN 189.320 ACRES

Lying in Virginia Military Surveys 3321 and 3322, Rushcreek and Jefferson Townships, Logan County, Ohio.

Being all of the Doris Herrin original 75.0 acre, 85.0 acre and all of the remainder of the original 30.0 acre tracts as deeded and described in Volume 373, Page 991, Tract One, Tract Two and Tract Three of the Logan County Records of Deeds and being more particularly described as follows:

Beginning at a 1 inch iron rod found in a monument box on the south line of Virginia Military Survey 3322 at the intersection of the center-lines of Township Road 219 and County Highway 9 on County Highway 9 center-line station 86+28.8 (Logan Co. Eng. File X-9C).

THENCE, with the center-line of County Highway 9 (width varies), N 35°-39'-32" E, a distance of 1486.40 feet to a MAG nail set at the TRUE POINT OF BEGINNING.

THENCE, with the center-line of County Highway 9, N 35°-39'-32" E, a distance of 526.27 feet to a 1 inch iron rod found in a monument box on center-line P.I. station 106+41.62.

THENCE, with the center-line of County Highway 9, N 35°-35'-26" E, a distance of 259.99 feet to a MAG nail set.

THENCE, with the lines of the Gary D. Pond 2.78 acre tract (O.R. 384, Pg. 793), the following three (3) courses:

S 73°-30'-36" E, a distance of 312.32 feet to a 5/8 inch iron rod found, passing a 5/8 inch iron rod found at 69.30 feet;

S 4°-45'-55" E, a distance of 616.16 feet to a 5/8 inch iron rod found;

N 84°-43'-45" E, a distance of 186.30 feet to a 5/8 inch iron rod set.

THENCE, with an east line of the said 2.78 acre tract and an east line of the Jerry Lee Reames 4.00 acre tract (O.R. 136, Pg. 787), N 4°-42'-00" W, a distance of 849.27 feet to a P.K. nail found in a wood post.

THENCE, with a south line of the said 4.00 acre tract and the south line of the Donald D. Ropp original 68.61 acre tract (O.R. 50, Pg. 405, Parcel I, Tract I), N 84°-54'-43" E, a distance of 3764.79 feet to a 5/8 inch iron rod set.

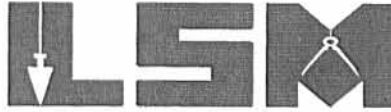
THENCE, with the west line of the Glenn L. Strawser original 132.37 acre tract (O.R. 81, Pg. 430), S 4°-09'-38" E, a distance of 1888.34 feet to a 5/8 inch iron rod set.

THENCE, with the south line of Virginia Military Survey 3321 and the north lines of the Larry Douglas Petersen original 80 acre tract (O.R. 73, Pg. 60), the Pines Lake, Ltd. original 77.10 acre tract,

# Lee Surveying and Mapping Co., Inc.

Land Surveys • Topography • Subdivisions • Construction Layout

117 N. Madriver St.  
Bellefontaine OH 43311



Phone: (937) 593-7335  
Fax: (937) 593-7444

50.0 acre tract and 2.680 acre tract (O.R. 557, Pg. 229, Tract II, Tract I and Tract III), S 85°-23'-15" W, a distance of 4316.51 feet to a 5/8 inch iron rod set.

THENCE, with the northeasterly line of the Leroy H. Reames, Trustess, 13.838 acre tract (O.R. 462, Pg. 407), N 32°-09'-23" W, a distance of 859.40 feet to a 5/8 inch iron rod set.

THENCE, with the southeasterly line of the Jacqueline M. Skidmore original 1.00 acre tract (O.R. 357, Pg. 485), N 36°-27'-53" E, a distance of 170.00 feet to a 3/4 inch iron pipe found.

THENCE, with the northeasterly line of the said 1.00 acre tract, N 33°-18'-44" W, a distance of 278.14 feet to the point of beginning, passing a 5/8 inch iron rod set at 224.07 feet.


Containing 189.320 acres, of which 1.618 acres are within the highway right-of-way, 133.497 acres are in Rushcreek Township, 55.823 acres are in Jefferson Township, 5.437 acres are in Virginia Military Survey 3322 and 183.883 acres are in Virginia Military Survey 3321.

The basis for bearings is the center-line of County Highway 9, being N 35°-39'-32" E, and all other bearings are from angles and distances measured in a field survey by Lee Surveying and Mapping Co., Inc. on November 21, 2002.

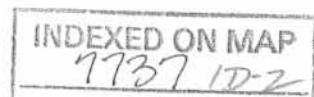
Description prepared by:



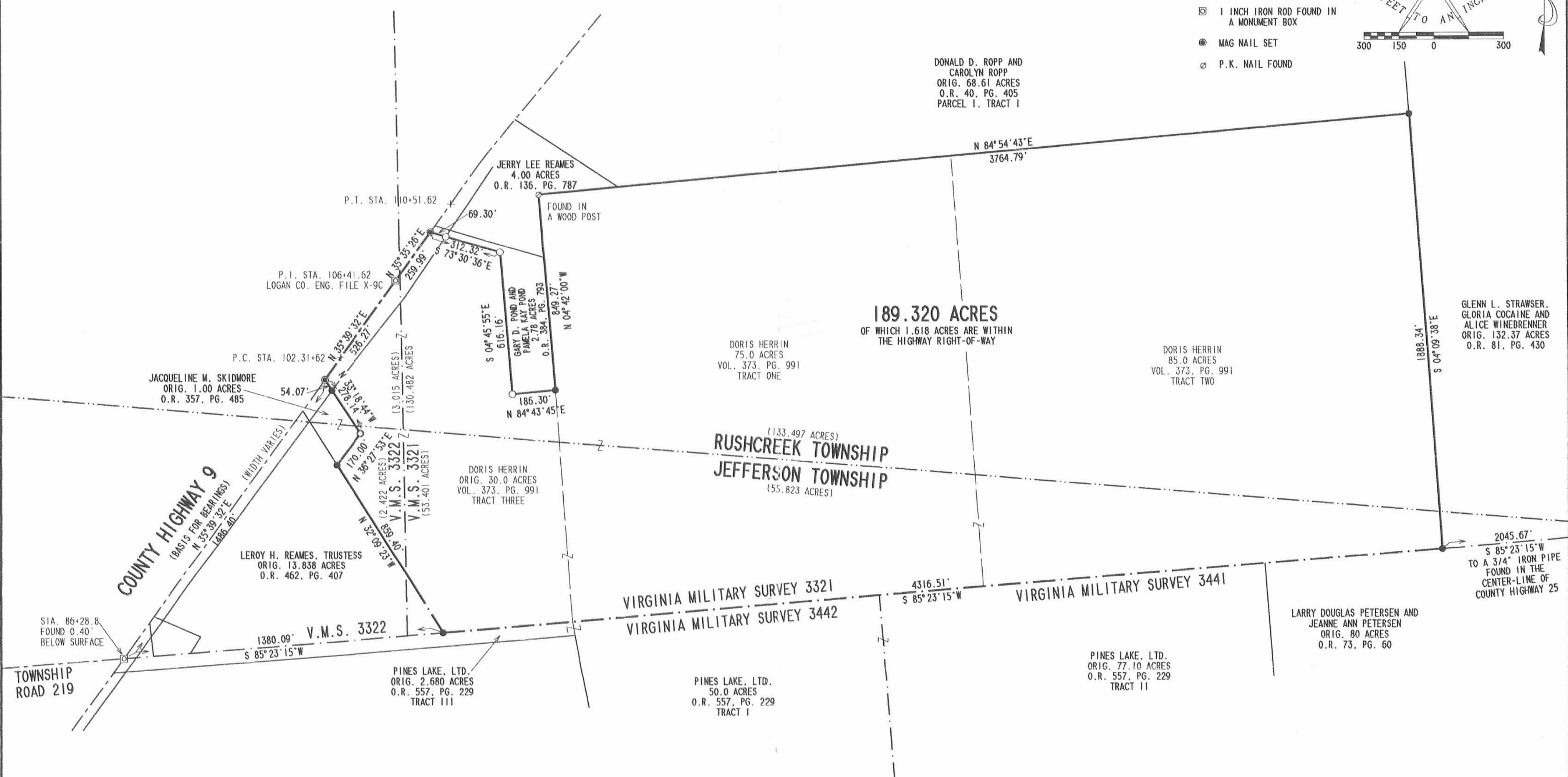
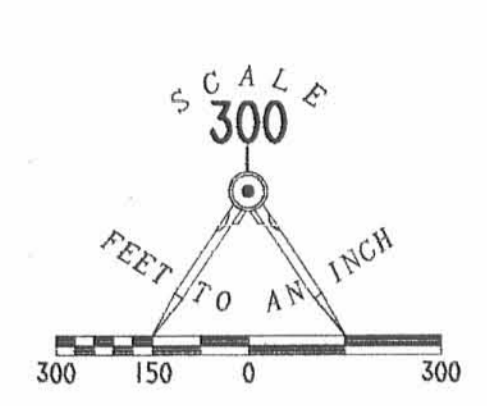
ORIGINAL STAMP IN GREEN

  
Jeffrey I. Lee  
Professional Surveyor 6359  
January 18, 2003

L-3480



- LEGEND**
- 5/8 INCH IRON ROD SET
  - 5/8 INCH IRON ROD FOUND
  - 3/4 INCH IRON PIPE FOUND
  - ⊠ 1 INCH IRON ROD FOUND IN A MONUMENT BOX
  - ⊙ MAG NAIL SET
  - ⊘ P.K. NAIL FOUND



RETRACEMENT SURVEY OF THE  
DORIS HERRIN  
ORIGINAL 75.0 ACRE, 85.0 ACRE AND  
THE REMAINDER OF THE ORIGINAL 30.0 ACRE TRACT  
VOLUME 373, PAGE 991  
TRACT ONE, TRACT TWO AND TRACT THREE  
VIRGINIA MILITARY SURVEYS 3321 AND 3322  
RUSHCREEK AND JEFFERSON TOWNSHIP  
LOGAN COUNTY, OHIO



SURVEYED BY:  
*[Signature]*  
JEFFREY I. LEE  
PROFESSIONAL SURVEYOR 6359  
NOVEMBER 21, 2002  
COPYRIGHT 2003 BY:  
LEE SURVEYING & MAPPING CO., INC.  
117 North Madison Street  
BELLEFONTAINE, OHIO 43311  
(937) 593-7335

2 WORKING DAYS  
**BEFORE YOU DIG**  
CALL TOLL FREE 800-362-2764  
OHIO UTILITIES PROTECTION SERVICE.

D 407 GRBR L-3480-3

INDEXED ON MAP  
7737 10