

Trails Recorded

N^o 416

Survey

(8431)

Survey April 30. 1838 for Daniel K. Colvin part of Military Survey N^o 9989. Beginning at an Ash South East corner to the original Survey (also 2nd run) thence N 11^o W 100 poles to a Sargo Ash; thence S 78^o W 80^o poles to a Beech & Sugar thence S 11^o E 98 poles to a stake thence N 77^o E 80 poles to the beginning containing 2nd run.

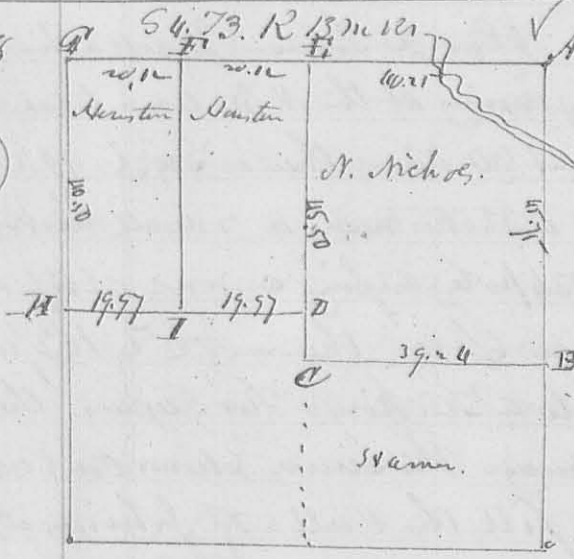
D. Hoffman A. S. S. C.

N^o 417

Survey May 29. 1838 for Andrew Roberts part of Survey 9889. Beginning at a Sargo & Beech Patent call for a stake thence N 11^o W 200 poles crossing a Creek at 128 poles to 2 Sugar (New Cut dem.) being the beginning call of the Patent thence N 78^o E 107 poles back at 20 poles to a Beech & Cypress, the Cypress dem.; thence S 10^o E 200 poles to a Beech thence S 7^o E 105 poles crossing run at 14 poles back at 45 & 60 poles to the beginning.

D. Hoffman A. S. S. C.

N^o 418



Corner.

- A. Wh. Oak 12 S. D. N 68^o W 30 Links
- ditto 10 " " N 55^o E 20 "
- B. Stump in a drain
- C. Wh. Oak 20 S. D. N 80^o W 33. "
- D. Bl. Walnut 3 " " S 59^o E 17 1/2 "
- Bl. Oak 8 " " N 57^o W 61 "
- E. ditto 12 " " N 58^o E 50 "
- F. Hickory 15 " " N 17^o W 33 "
- G. Stake

G. Red Elm 5 S. D. South 27 Links dem. and gone. (plate-stump)
 Bl. Walnut 10 S. D. N 57^o W 23 Links
 H. Sack oak 6. S 48^o W 57 Links. Elm 12 S. D. N 80^o E 61 Links (stump)
 I. Stump & Wh. Oak 12 S. D. N 30^o E 57 Links and White O 15 S. D. N 61^o W 95
 then Beginning at C. thence ~~Call~~ ditto stump & white oak 20 S. D.
 N 13^o E 75 Links; thence N 24^o E 16 ch to a stump thence N 52^o E 10.50 Links
 to a Sargo stump thence N 45^o W 7.88 ch to a Bl. Walnut 12 S. D. S 29^o E
 37 Links; thence on a Walnut 12 S. D. N 29^o E 42 Links thence