

REC'D 8-7-03 SUM/alc

Lee Surveying and Mapping Co., Inc.

Land Surveys • Topography • Subdivisions • Construction Layout

117 N. Madriver St.
Bellefontaine OH 43311



Phone: (937) 593-7335
Fax: (937) 593-7444

DAY 78.221 ACRES

Lying in Virginia Military Survey 9907, McArthur and Rushcreek Townships, Logan County, Ohio.

Being all of the Frank E. Day and Marcelle Y. Day 77 acre tract, as deeded and described in Volume 402, Page 333, Parcel III of the Logan County Records of Deeds and being more particularly described as follows:

Beginning at a 3/4 inch square bolt found on Station 374 + 97.56 as referenced to on a Logan County Engineer's survey filed in R - 5418 and dated May, 1998.

THENCE, with the center-line of County Highway 25 (60 feet wide), S 10°-07'-32"E, a distance of 509.21 feet to a 3/4 inch iron rod found at the TRUE POINT OF BEGINNING.

THENCE, with the lines of the Margery Lucile Lusby 61.830 acre tract (O.R. 433, Pg. 714), the following 4 (four) courses:

S 78°-59'-48"W, a distance of 929.67 feet to a 5/8 inch iron rod set, passing a 5/8 inch iron rod found at 30.00 feet.

N 12°-03'-37"W, a distance of 220.28 feet to a 5/8 inch iron rod set.

S 79°-47'-26"W, a distance of 749.99 feet to a 5/8 inch iron rod set.

S 09°-14'-06"E, a distance of 230.74 feet to a 5/8 inch iron rod set.

THENCE, with the north lines of the said 61.830 acre tract and the United Methodist Church West Ohio Camp and Conference Committee, Inc. 18.17 acre tract (Vol. 339, Pg. 64 Parcel III), S 78°-59'-48"W, a distance of 589.31 feet to a 5/8 inch iron rod set.

THENCE, with the east line of the Tonia E. Terebuh, Trustee, 170.98 acre tract (O.R. 305, Pg. 559, Tracts IV and V), N 11°-17'-48"W, a distance of 1562.59 feet to a 5/8 inch iron rod set.

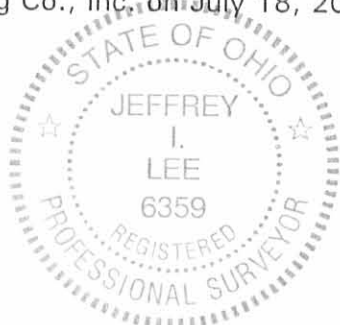
THENCE, with the south lines of the Paul R. Miller 69.357 acre tract (O.R. 512, Pg. 733), the Jonas Coblentz, Jr. 42 acre tract (O.R. 5, Pg. 408, Parcel II), and the Mark A. Easton 1 acre tract (Vol. 344, Pg. 959), N 78°-34'-20"E, a distance of 2274.46 feet to a 3/4 inch iron rod found, passing a 5/8 inch iron rod found at 2244.62 feet.

THENCE, within the right-of-way of County Highway 25, S 11°-30'-00"E, a distance of 1579.48 feet to the point of beginning.

Containing 78.221 acres, of which 0.689 acre is within the highway right-of-way, 16.800 acres are within McArthur Township, and 61.421 acres are within Rushcreek Township.

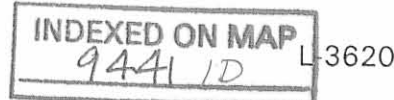
The basis for bearings is the center-line of County Highway 25, being S 10°-07'-32"E, and all other bearings are from angles and distances measured in a field survey by Lee Surveying and Mapping Co., Inc. on July 18, 2003.

Description prepared by:



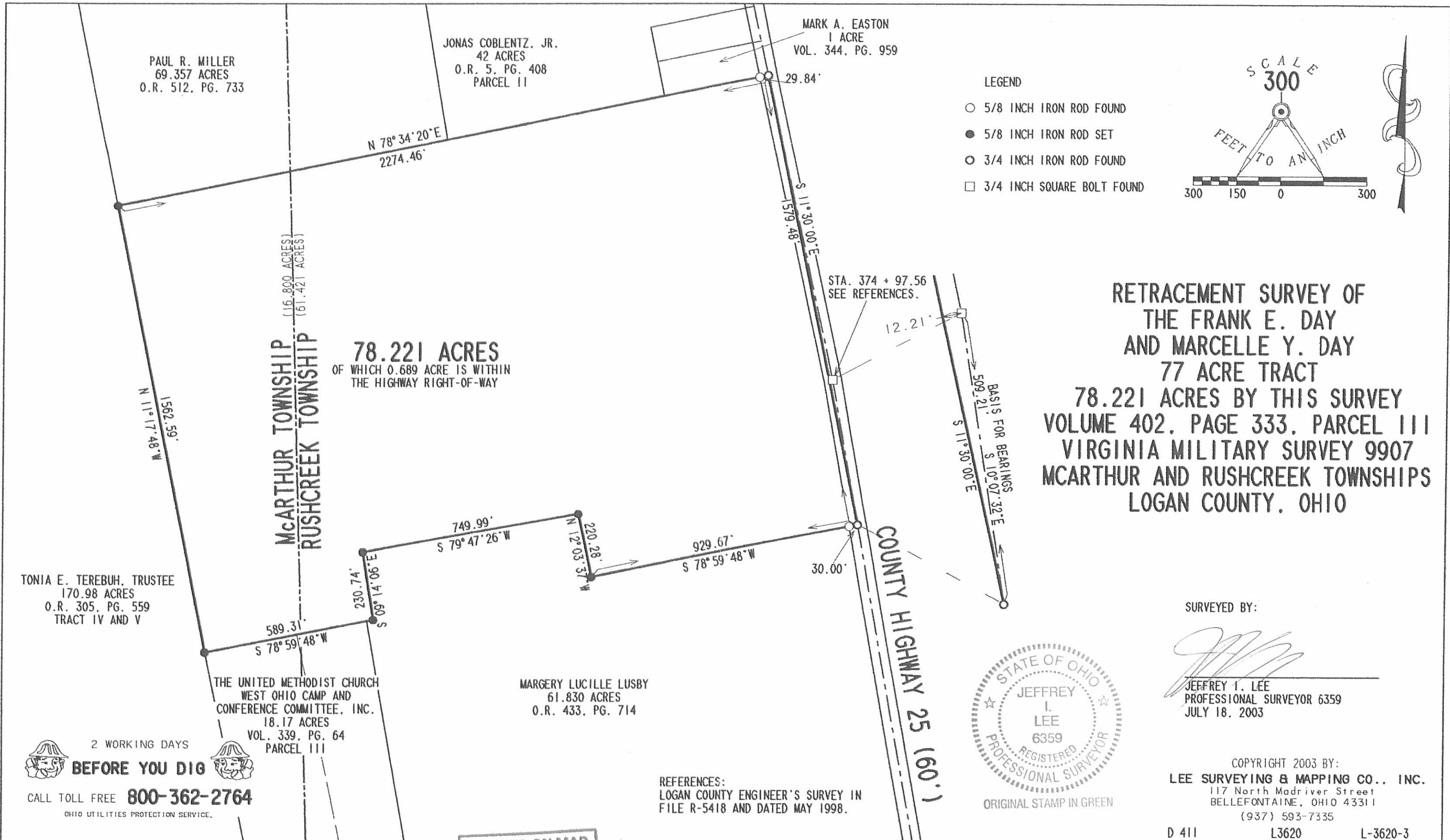
A handwritten signature of Jeffrey I. Lee in black ink.

Jeffrey I. Lee
Professional Surveyor 6359
August 5, 2003

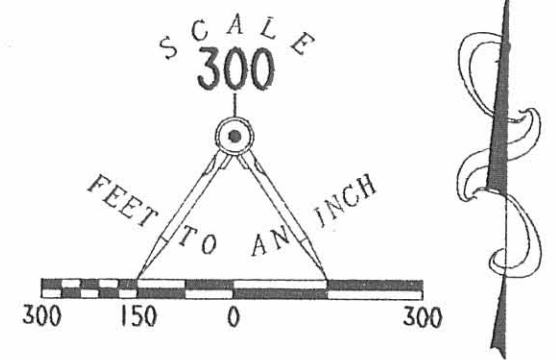


ORIGINAL STAMP IN GREEN

REC'D 8-7-03 SUMMER



- LEGEND
- 5/8 INCH IRON ROD FOUND
 - 5/8 INCH IRON ROD SET
 - 3/4 INCH IRON ROD FOUND
 - 3/4 INCH SQUARE BOLT FOUND



RETRACEMENT SURVEY OF
THE FRANK E. DAY
AND MARCELLE Y. DAY
77 ACRE TRACT
78.221 ACRES BY THIS SURVEY
VOLUME 402, PAGE 333, PARCEL 111
VIRGINIA MILITARY SURVEY 9907
MCARTHUR AND RUSHCREEK TOWNSHIPS
LOGAN COUNTY, OHIO

SURVEYED BY:

JEFFREY I. LEE
PROFESSIONAL SURVEYOR 6359
JULY 18, 2003



COPYRIGHT 2003 BY:
LEE SURVEYING & MAPPING CO., INC.
117 North Madriver Street
BELLEFONTAINE, OHIO 43311
(937) 593-7335

TONIA E. TEREBUH, TRUSTEE
170.98 ACRES
O.R. 305, PG. 559
TRACT IV AND V

THE UNITED METHODIST CHURCH
WEST OHIO CAMP AND
CONFERENCE COMMITTEE, INC.
18.17 ACRES
VOL. 339, PG. 64
PARCEL 111

MARGERY LUCILLE LUSBY
61.830 ACRES
O.R. 433, PG. 714

REFERENCES:
LOGAN COUNTY ENGINEER'S SURVEY IN
FILE R-5418 AND DATED MAY 1998.

2 WORKING DAYS
BEFORE YOU DIG
CALL TOLL FREE **800-362-2764**
OHIO UTILITIES PROTECTION SERVICE.

INDEXED ON MAP
9441 IP

D 411 L3620 L-3620-3

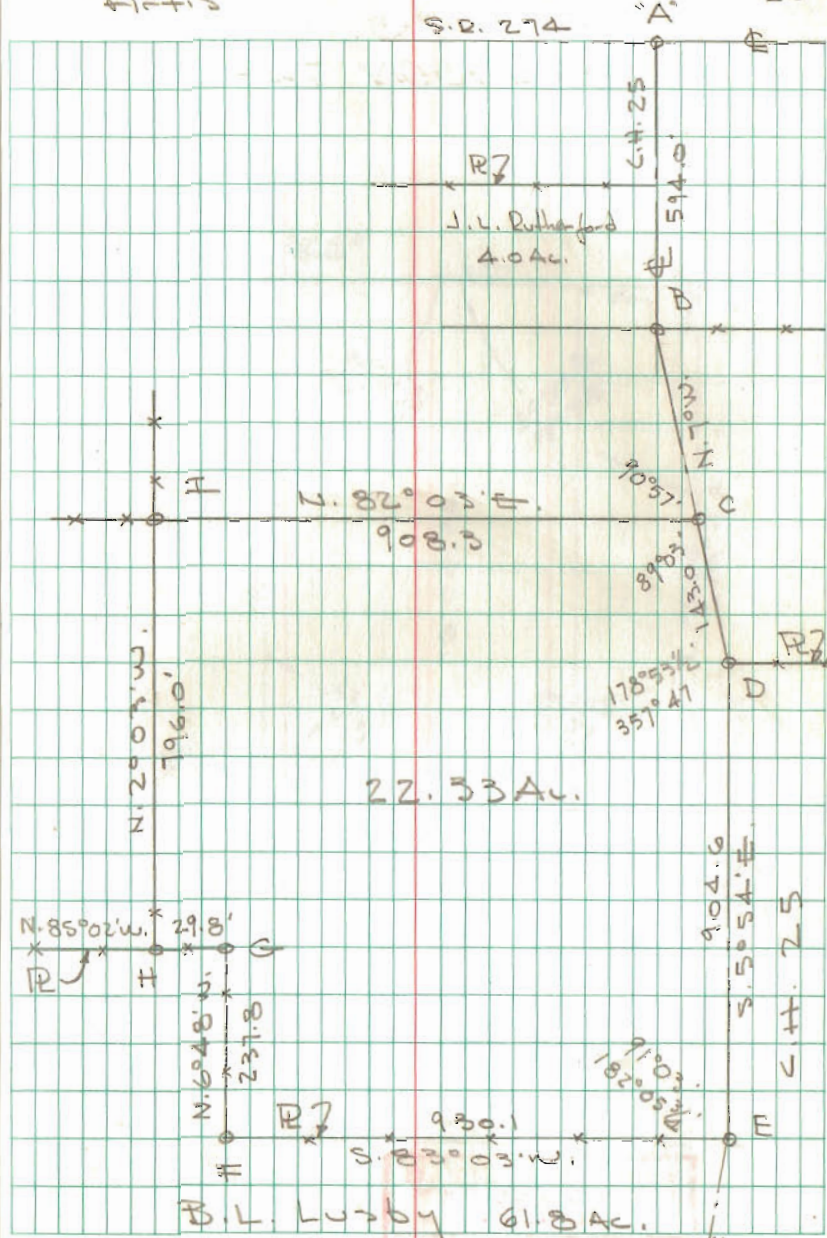
RUTHERFORD SURVEY
 V.M.S. 9907
 RUSHCREEK TWP

- A = 1" ϕ Bar Found
- B = 1" ϕ Bar Set @ S. line of 4.0 Ac. tr.
- C = 1" ϕ Bar Set
- D = R.R. Spk found - S.W. Corner
 H. Snapp's 5.00 Ac. tract
- E = 1" ϕ Bar Set - Split fences for E
- F = 1" ϕ Bar Set @ W. side of Cor. post
- G = 1" ϕ Bar Set @ N.E. Cor of Cor. post
- H = 1" ϕ Bar Set @ S. side of Cor. post
- I = 1" ϕ Bar Set @ E. side of Cor. post

INDEXED ON MAP
 9441

Whitlow
 Artis

May 3, 1969
 10° 19



REC'D 9-14-11 SMM OK

Lee Surveying and Mapping Co., Inc.

Land Surveys • Topography • Subdivisions • Construction Layout

117 N. Madriver St.
Bellefontaine OH 43311



Phone: (937) 593-7335
Fax: (937) 593-7444
surveys@lsminc.us

DAY, TRUSTEES 12.000 ACRES

Lying in Virginia Military Survey 9907, Rushcreek Township, Logan County, Ohio.

Being out of the Frank Edward Day and Marcelle Yvonne Day, Trustees 78.221 acre tract as deeded and described in Official Record 667, Page 194 of the Logan County Records of Deeds and being more particularly described as follows:

Commencing at a 3/4 inch square iron bolt found on the center-line of County Highway 25 (60 feet wide) at station 374+97.56, referenced in the Logan County Engineer's Survey in file R-5418 dated May 1998.

THENCE, N 13°-02'-37"W, a distance of 453.39 feet to a MAG nail set at the true point of beginning.

THENCE, S 80°-43'-20"W, a distance of 897.52 feet to a 5/8 inch iron rod set, passing a 5/8 inch iron rod set at 22.99 feet.

THENCE, N 06°-13'-38"W, a distance of 585.93 feet to a 5/8 inch iron rod set.

THENCE, with the south lines of the Harlen Helmuth and JoAnna Helmuth 12.080 acre tract (O.R. 735, Pg. 549) and the Mark A. Easton and Brenda Easton 1 acre tract (Vol. 344, Pg. 959), N 78°-34'-20"E, a distance of 843.00 feet to a 3/4 inch iron rod found on the center-line of County Highway 25, passing a 5/8 inch iron rod found at 813.16 feet.

THENCE, within the right-of-way of County Highway 25, S 11°-30'-00"E, a distance of 617.19 feet to the point of beginning.

Containing 12.000 acres of which 0.374 acre is within the highway right-of-way.

Property is subject to any and all previous easements and rights-of-way of record.

The basis for bearings is center-line of County Highway 25, being N 12°-09'-13"W, and all other bearings are from angles and distances measured in a field survey by Lee Surveying and Mapping Co., Inc. on September 8, 2011.

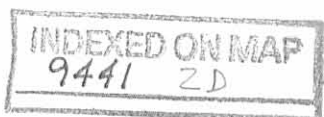


Description prepared by:

A handwritten signature in blue ink that reads 'William K. Bruce'.

William K. Bruce
Professional Surveyor 7437
September 9, 2011

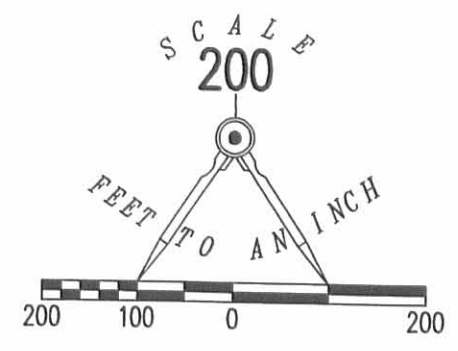
36200911



REV'D 9-14-11 SMY OL



- LEGEND
- 5/8 INCH IRON ROD SET WITH PLASTIC I.D. CAP STAMPED "LSM 7347"
 - 5/8 INCH IRON ROD FOUND
 - MAG NAIL SET
 - ⊠ 3/4 INCH SQUARE IRON BOLT FOUND
 - ⊙ 3/4 INCH IRON ROD FOUND



SURVEY OF A 12.000 ACRE TRACT OUT OF THE FRANK EDWARD DAY AND MARCELLE YVONNE DAY, TRUSTEES 78.221 ACRE TRACT OFFICIAL RECORD 667, PAGE 194 VIRGINIA MILITARY SURVEY 9907 RUSHCREEK TOWNSHIP LOGAN COUNTY, OHIO



SURVEYED BY:
William K. Bruce
 WILLIAM K. BRUCE
 PROFESSIONAL SURVEYOR 7437
 SEPTEMBER 8, 2011

COPYRIGHT 2011 BY:
LEE SURVEYING & MAPPING CO., INC.
 117 North Madriver Street
 BELLEFONTAINE, OHIO 43311
 (937) 593-7335
 surveys@lsminc.us
 ADW D0911 36200911 L-3620-3

INDEXED ON MAP
 9441 2P

2 WORKING DAYS
BEFORE YOU DIG
 CALL TOLL FREE **800-362-2764**
 OHIO UTILITIES PROTECTION SERVICE