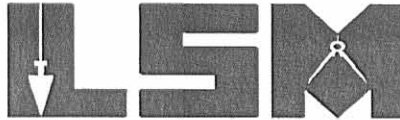


REC'D 11-15-04 EMM OK

Lee Surveying and Mapping Co., Inc.

Land Surveys • Topography • Subdivisions • Construction Layout

117 N. Madriver St.
Bellefontaine OH 43311



Phone: (937) 593-7335
Fax: (937) 593-7444

HARVEY 9.984 ACRES

Lying in Virginia Military Survey 9887, Rushcreek Township, Logan County, Ohio.

Being out of the Janeth Aleen Harvey original 82.50 acre tract as deeded and described in Volume 325, Page 5 of the Logan County Records of Deeds and being more particularly described as follows:

Beginning at a stone found in a monument box at the northwest corner of the said 82.50 acre tract at the intersection of the north line of Virginia Military Survey 9887 and at an angle in the center-line of County Highway 20 (45 feet wide).

THENCE, with the north line of Virginia Military Survey 9887 and the center-line of County Highway 20, N 79°-30'-00"E, a distance of 744.03 feet to a MAG nail set at THE TRUE POINT OF BEGINNING.

THENCE, continuing with the north line of Virginia Military Survey 9887 and the center-line of County Highway 20, N 79°-30'-00"E, a distance of 594.62 feet to a railroad spike found.

THENCE, with the west line of the Terry L. Tremains 14.11 acre tract (O.R. 22, Pg. 966) and the west line of the Joyce A. Core 95.98 acre tract (O.R. 461, Pg. 773, Parcel II), S10°-24'-57"E, a distance of 899.09 feet to a 5/8 inch iron rod set, passing a 5/8 inch iron rod set at 22.62 feet.

THENCE, N 71°-06'-24"W, a distance of 680.96 feet to 5/8 inch iron rod set.

THENCE, N 10°-29'-59"W, a distance of 564.87 feet to the point of beginning, passing a 5/8 inch iron rod set at 542.37 feet.

Containing 9.984 acres of which 0.307 acre is within the highway right-of-way.

The basis for bearings is the north line of Virginia Military Survey 9887 being N 79°-30'-00"E and all other bearings are from angles and distances measured in a field survey by Lee Surveying and Mapping Co., Inc. on November 9, 2004.

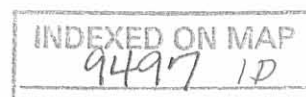


ORIGINAL STAMP IN GREEN

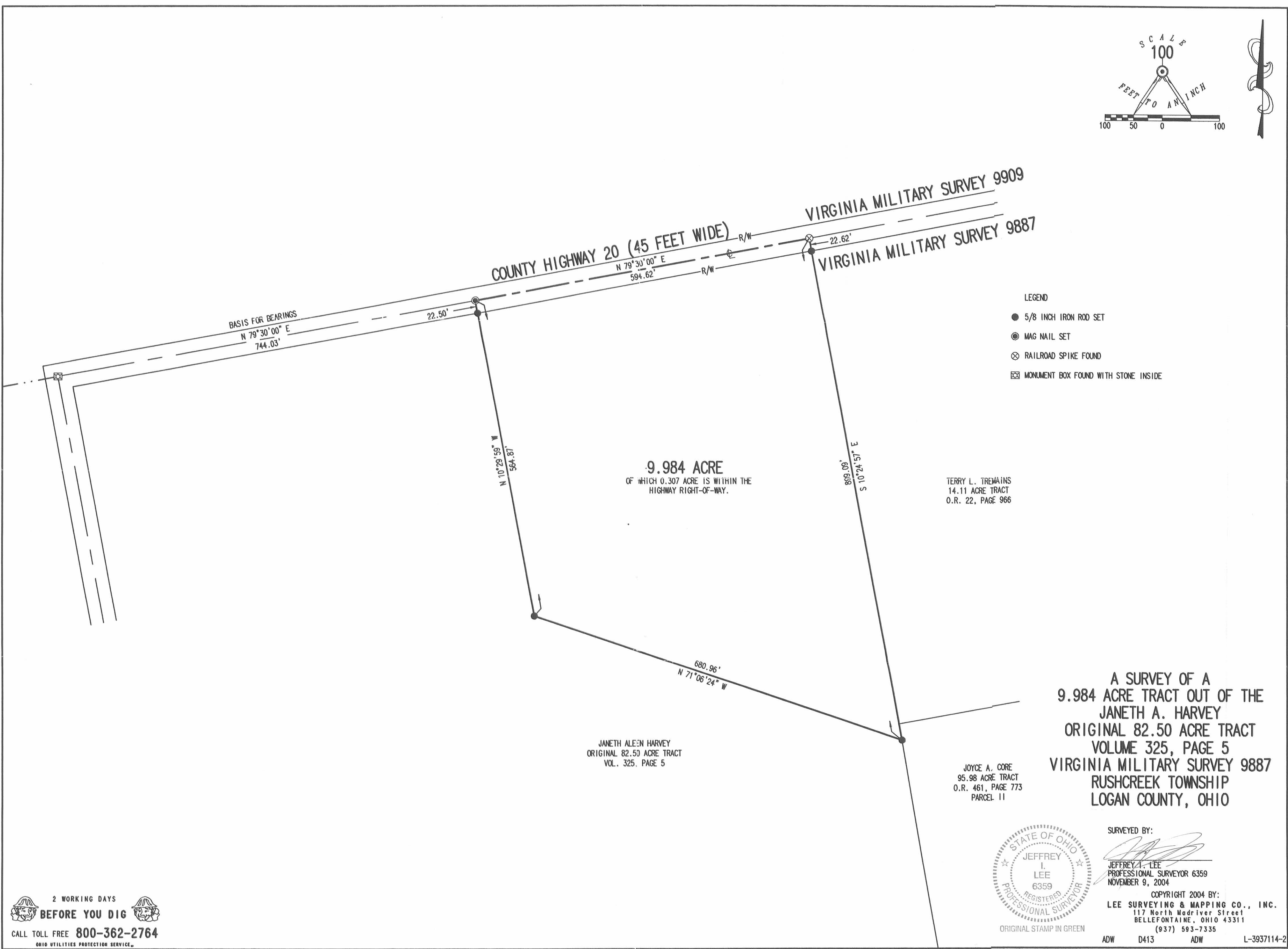
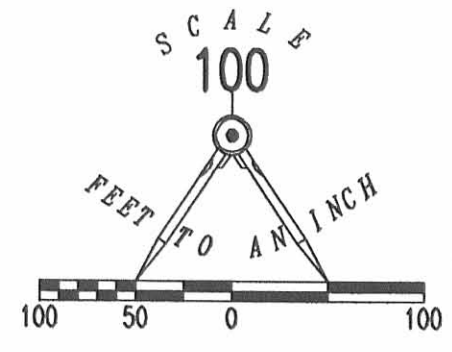
Description prepared by:

[Signature]
Jeffrey I. Lee
Professional Surveyor 6359
November 10, 2004

L-3937114



REC'D 11-15-04 SMY OK



- LEGEND
- 5/8 INCH IRON ROD SET
 - ⊙ MAG NAIL SET
 - ⊗ RAILROAD SPIKE FOUND
 - ⊠ MONUMENT BOX FOUND WITH STONE INSIDE

9.984 ACRE
OF WHICH 0.307 ACRE IS WITHIN THE
HIGHWAY RIGHT-OF-WAY.

TERRY L. TREMANS
14.11 ACRE TRACT
O.R. 22, PAGE 966

JANETH ALEEN HARVEY
ORIGINAL 82.50 ACRE TRACT
VOL. 325, PAGE 5

JOYCE A. CORE
95.98 ACRE TRACT
O.R. 461, PAGE 773
PARCEL 11

A SURVEY OF A
9.984 ACRE TRACT OUT OF THE
JANETH A. HARVEY
ORIGINAL 82.50 ACRE TRACT
VOLUME 325, PAGE 5
VIRGINIA MILITARY SURVEY 9887
RUSHCREEK TOWNSHIP
LOGAN COUNTY, OHIO



SURVEYED BY:
[Signature]
JEFFREY L. LEE
PROFESSIONAL SURVEYOR 6359
NOVEMBER 9, 2004

COPYRIGHT 2004 BY:
LEE SURVEYING & MAPPING CO., INC.
117 North Madriver Street
BELLEFONTAINE, OHIO 43311
(937) 593-7335

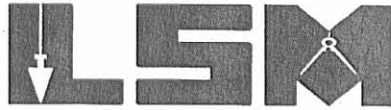
2 WORKING DAYS
BEFORE YOU DIG
CALL TOLL FREE **800-362-2764**
OHIO UTILITIES PROTECTION SERVICE

INDEXED ON MAP
9497 1P

Rec'd 2-24-05 SWJ/ok
Lee Surveying and Mapping Co., Inc.

Land Surveys • Topography • Subdivisions • Construction Layout

117 N. Madriver St.
Bellefontaine OH 43311



Phone: (937) 593-7335
Fax: (937) 593-7444

1975-2005 - 30 YEARS OF EXCELLENCE

**HARVEY
5.903 ACRES**

Lying in Virginia Military Survey 9887, Rushcreek Township, Logan County, Ohio.

Being out of the Janeth Aleen Harvey original 82.50 acre tract as deeded and described in Volume 325, Page 5 of the Logan County Records of Deeds and being more particularly described as follows:

Beginning at a stone found in a monument box at the northwest corner of the said 82.50 acre tract at the intersection of the north line of Virginia Military Survey 9887 and at an angle in the center-line of County Highway 20 (45 feet wide).

THENCE, with the north line of Virginia Military Survey 9887 and the center-line of County Highway 20, N 79°-30'-00"E, a distance of 744.03 feet to a MAG nail set at THE TRUE POINT OF BEGINNING.

THENCE, continuing with the north line of Virginia Military Survey 9887 and the center-line of County Highway 20, N 79°-30'-00"E, a distance of 594.62 feet to a railroad spike found.

THENCE, with the west line of the Terry L. Tremains 14.11 acre tract (O.R. 22, Pg. 966) and the west line of the Core Family Limited Partnership 94.076 acre tract (O.R. 755, Pg. 719, Parcel II), S10°-24'-57"E, a distance of 899.09 feet to a 5/8 inch iron rod set, passing a 5/8 inch iron rod set at 22.62 feet.

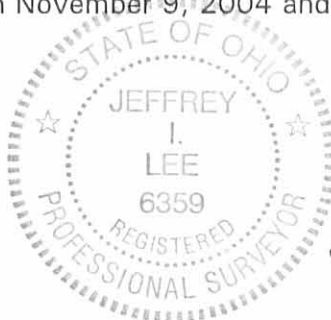
THENCE, N 35°-11'-12"W, a distance of 623.11 feet to 5/8 inch iron rod set.

THENCE, N 85°-40'-56"W, a distance of 344.51 feet to a 5/8 inch iron rod set.

THENCE, N 10°-29'-59"W, a distance of 244.82 feet to the point of beginning, passing a 5/8 inch iron rod set at 222.32 feet.

Containing 5.903 acres of which 0.307 acre is within the highway right-of-way.

The basis for bearings is the north line of Virginia Military Survey 9887, being N 79°-30'-00"E, and all other bearings are from angles and distances measured in a field survey by Lee Surveying and Mapping Co., Inc. on November 9, 2004 and revised February 23, 2005.

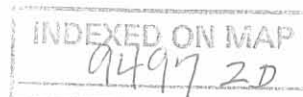


ORIGINAL STAMP IN GREEN

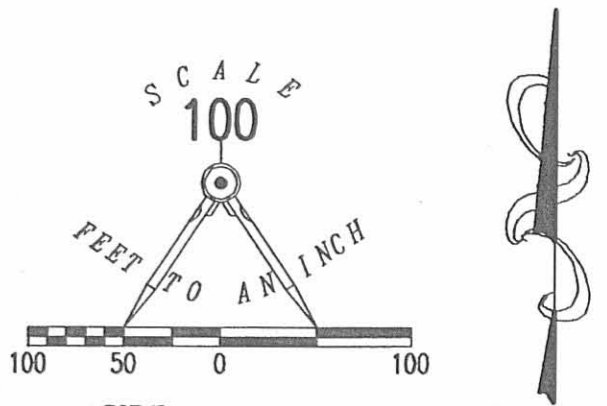
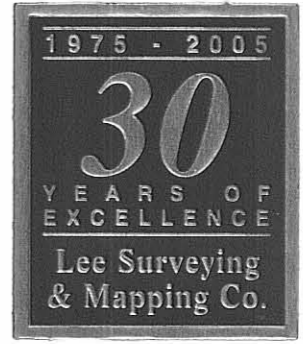
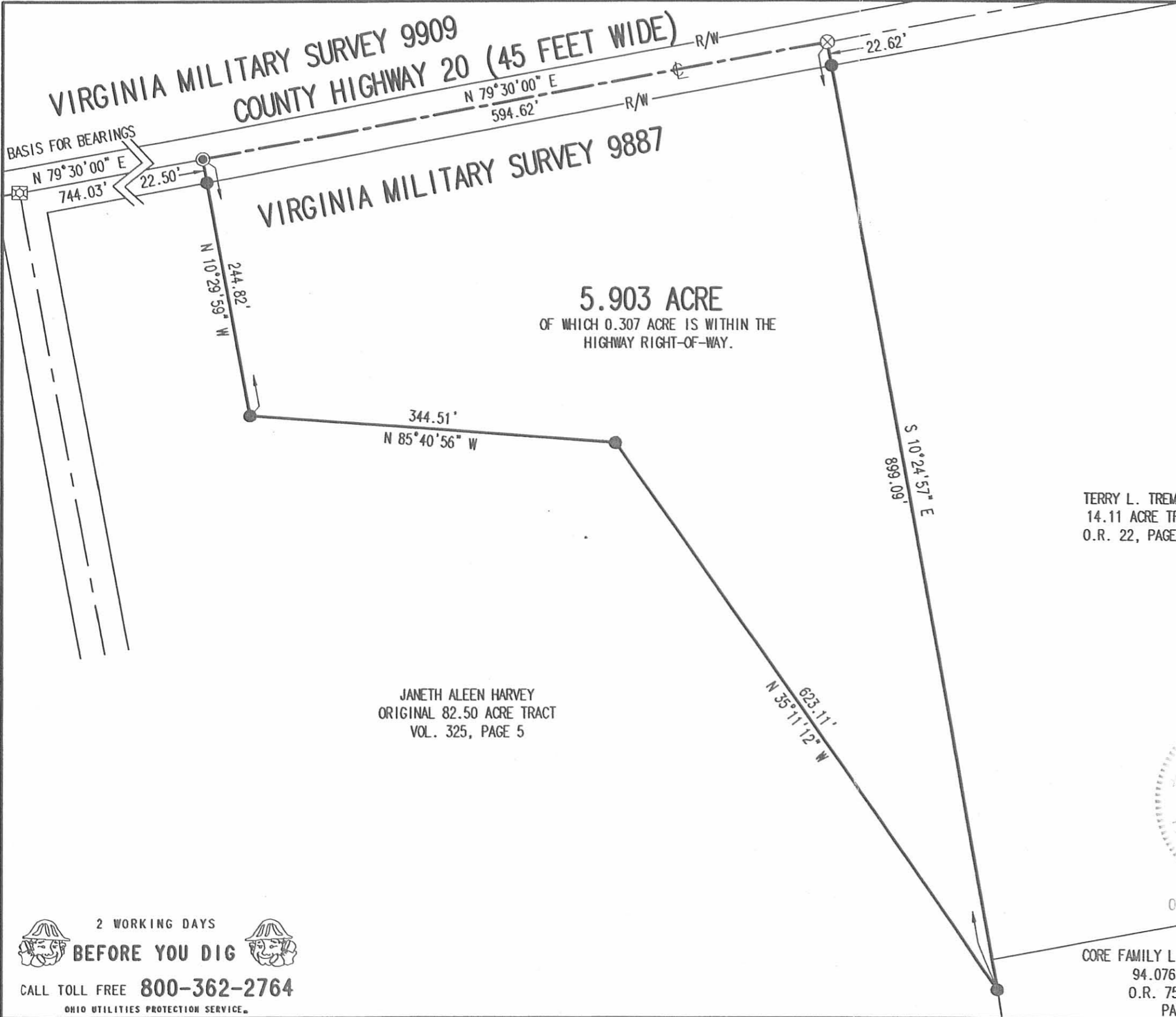
Description prepared by:

Jeffrey I. Lee
Professional Surveyor 6359
February 23, 2005

L-3937



REC'D 2 24-05 8VW/alc



- LEGEND
- 5/8 INCH IRON ROD SET
 - ⊙ MAG NAIL SET
 - ⊗ RAILROAD SPIKE FOUND
 - ⊠ STONE FOUND IN A MONUMENT BOX

A SURVEY OF A
 5.903 ACRE TRACT OUT OF THE
 JANETH A. HARVEY
 ORIGINAL 82.50 ACRE TRACT
 VOLUME 325, PAGE 5
 VIRGINIA MILITARY SURVEY 9887
 RUSHCREEK TOWNSHIP
 LOGAN COUNTY, OHIO



ORIGINAL STAMP IN GREEN

SURVEYED BY:

 JEFFREY I. LEE
 PROFESSIONAL SURVEYOR 6359
 NOVEMBER 9, 2004
 REVISED FEBRUARY 23, 2005

COPYRIGHT 2005 BY:
LEE SURVEYING & MAPPING CO., INC.
 117 North Medriver Street
 BELLEFONTAINE, OHIO 43311
 (937) 593-7335
 KSR D0205 3937025 L-3937-3

2 WORKING DAYS
BEFORE YOU DIG
 CALL TOLL FREE **800-362-2764**
 OHIO UTILITIES PROTECTION SERVICE.

INDEXED ON MAP
 9497 2P