

Chapman

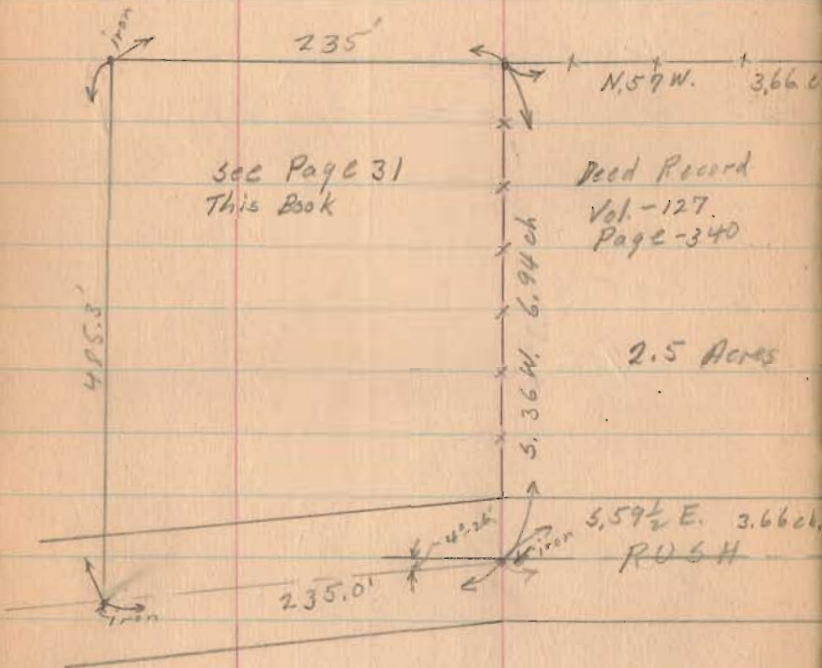
Survey for Rushcreek Twp. School
V.M.S. 13446 - Rushy Ivanja

Board
Ohio

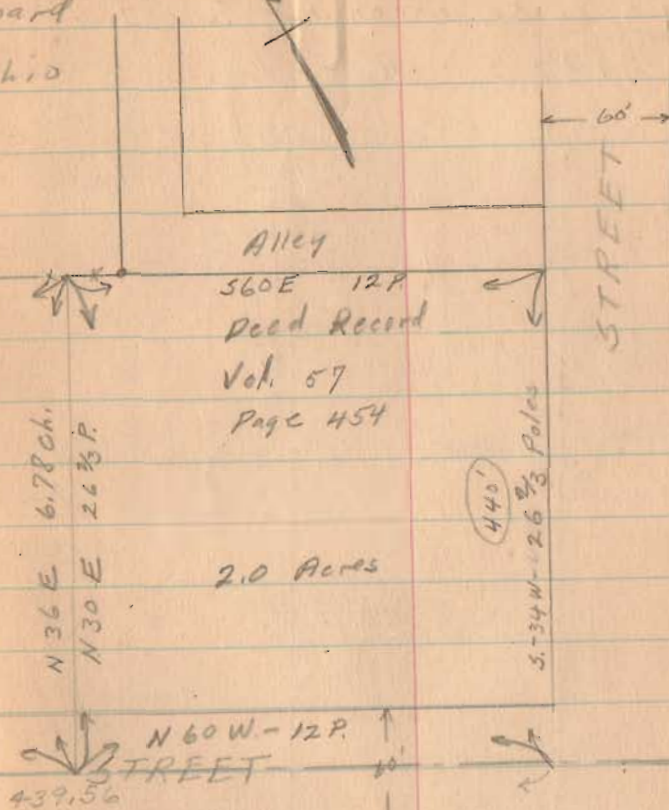
1916
Apr. 20 1935

I. P. Core
E. K. Core

30



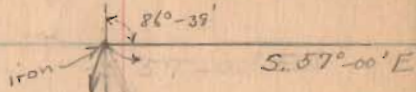
INDEXED ON MAP.



Chapman

Survey for Rushcreek Twp School Board

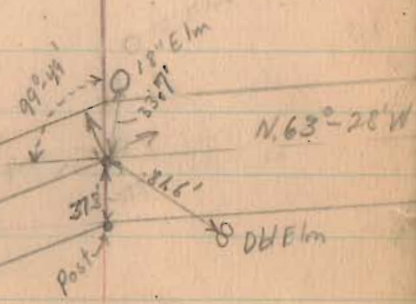
V.M.S. 13446 - Rushsylvania, Ohio



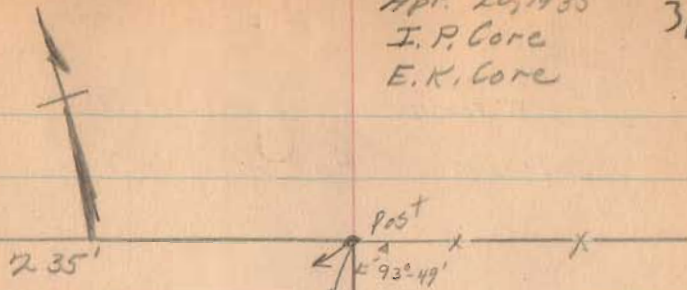
1655

INDEXED ON MAP

N 36° 21' E 485.3'

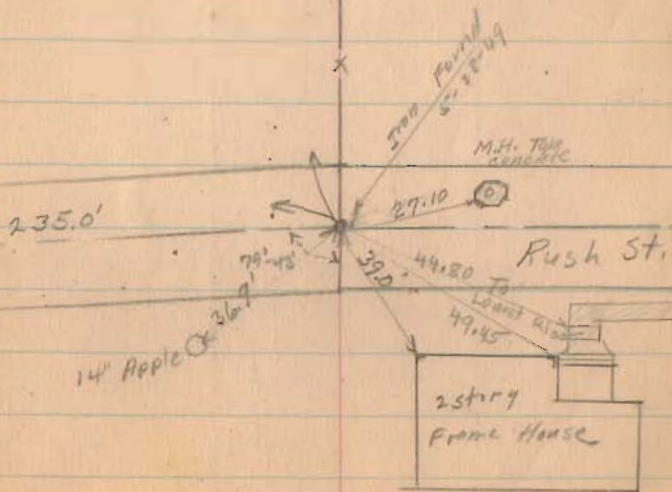


Apr. 20, 1935 31
I. P. Core
E. K. Core



2.52 Acres

536° 49' W 458.0'



Rushsylvania School
Topographic Survey

Staked off in 100' squares

See FB 549 pg 30-31 for School lot Survey

See Plan U-86

INDEXED ON MAP

1655

Oct. 17-18, 1979

E. K. Corb

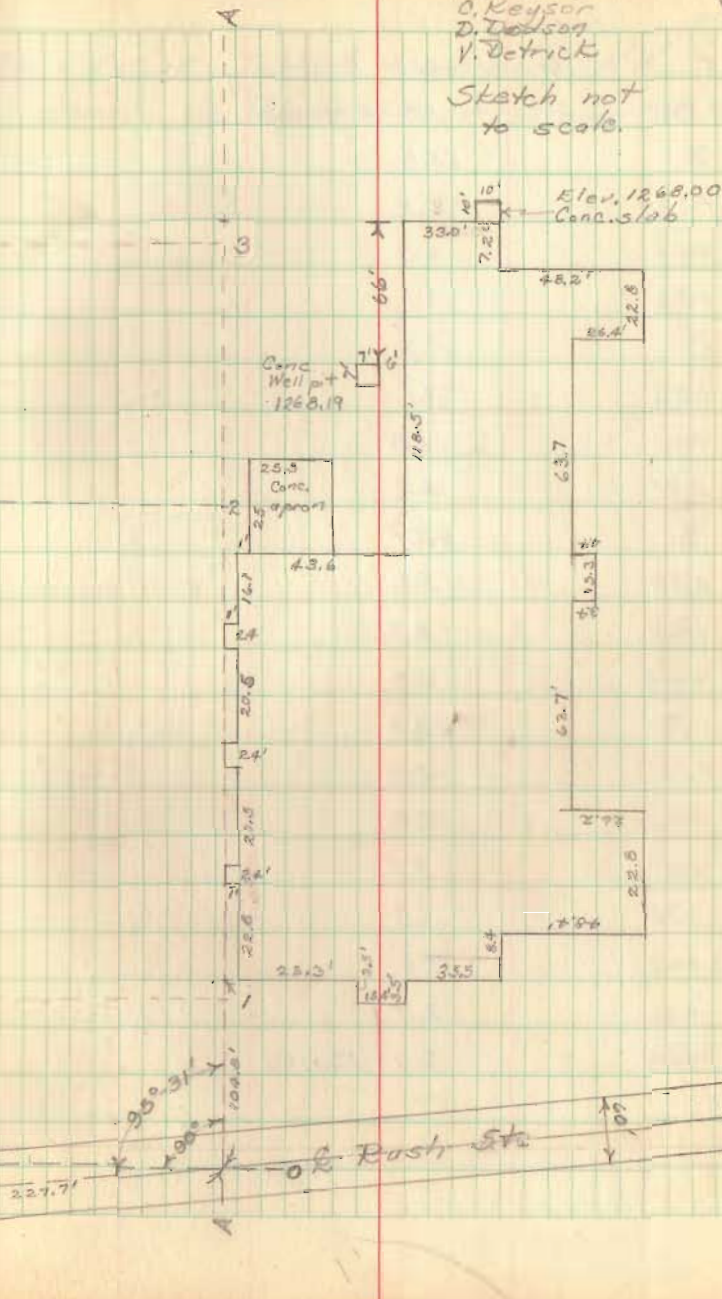
O. Keyser

D. Dutton

V. Detrick

Sketch not
to scale.

50



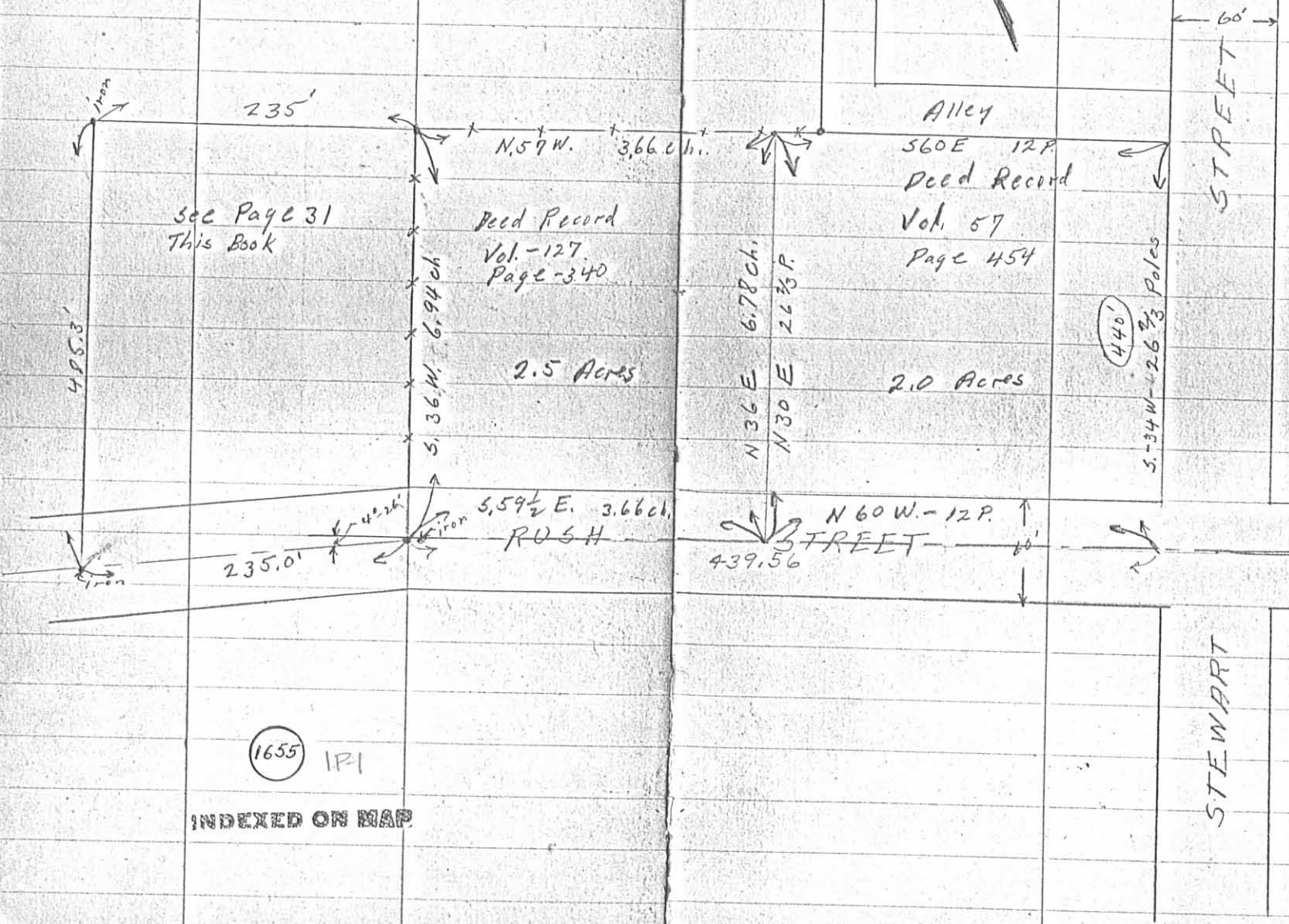
TB 549
Apr. 30, 1935

Chapman

Survey for Rushcreek Twp. School Board
V.M.S. 13446 - Rushsylvania, Ohio

Title - 3-1936
Apr. 20 1935
I.P. Core
E.K. Core

30



1655 IPI

INDEXED ON MAP

Chapman

Survey for Rushcreek Twp School Board
V.M.S. 13446 - Rushsylvania, Ohio

1655

IP-2

INDEXED ON MAP

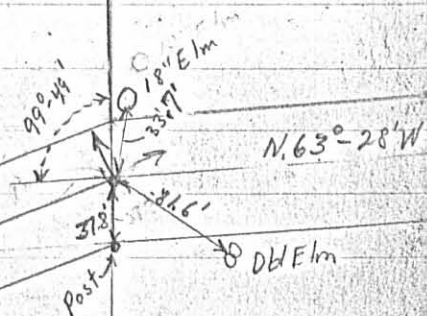
N 36° 21' E 485.3'

Iron
86°-39'
S. 57°-00' E

235'

2.52 Acres

Co. Road No.

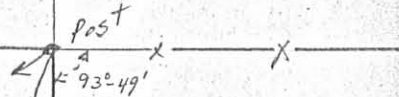


July 3-1936 32

Apr. 20, 1935 31

I. P. Core

E. K. Core



S 86°-47' W 458.0'

235.0'

14" Apple C. 36.7'

5" Iron Found
5-28-49

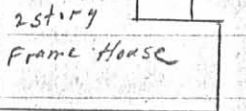
M.H. Top
concrete

27.10'

Rush St.

44.80' to
Lowest Rise

49.45'



LESLIE H. GEESLIN
REGISTERED SURVEYOR 5248
P. O. BOX 274
RUSHSYLVANIA, OHIO 43347
TELEPHONE: (513) 468-2793

Benjamin Logan Board of Education Survey

Rushsylvania Magnet School

October 19, 1995

The following described real estate situated in the State of Ohio, County of Logan, Township of Rushcreek, V.M.S. 13446, in the Village of Rushsylvania and more particularly described as follows:

Beginning at a 5/8 inch iron bar set in the centerline of Rush Street (County Highway 113) and the west right-of-way line Stewart Street.

Thence with the centerline of Rush Street (C.H. 113) N. 63° 59' 39"W. 444.34 feet to a 3/4" iron bar found.

Thence again with the centerline of Rush Street (C.H. 113) N. 68° 33' 21" W. 232.99 feet to a R. R. spike found at the southeast corner of David K. Brown Etux's. 17.77 acre tract as described in O.R. Vol. 12 Page 279.

Thence with said Brown's east line N. 31° 30' 29" E. 485.37 feet to a angle iron post found.

Thence with Brown's south line and the south line of J.E. Alexander's Addition to Rushsylvania, (Logan County Recorder's Plat Cabinet A Slide 171) S. 61° 43' 43" E. 676.55 feet to a P.K.nail set in a concrete walk and being the west right-of-way line of Stewart Street.

Thence with the west right-of-way line of Stewart Street S. 32° 00' 00" W. 440.26 feet to the place of beginning.

Containing 7.059 acres more or less of which 0.466 acre is in the right-of-way of Rush Street (County Highway 113).

The above described 7.059 acre tract being all of the Benjamin Logan Board of Education's 2.00 acre tract (D.B. Vol. 57 Page 454), 2.50 acre tract, (D.B. Vol. 127 Page 340), and their 2.52 acre tract (D.B. Vol. 152 Page 391).

Bearings are based on an assumed bearing (S. 32° 00' 00" W.) for the west right-of-way line of Stewart Street in this field survey by Leslie H. Geeslin on October 19, 1995.

RU A:40MAGSCH.SAM

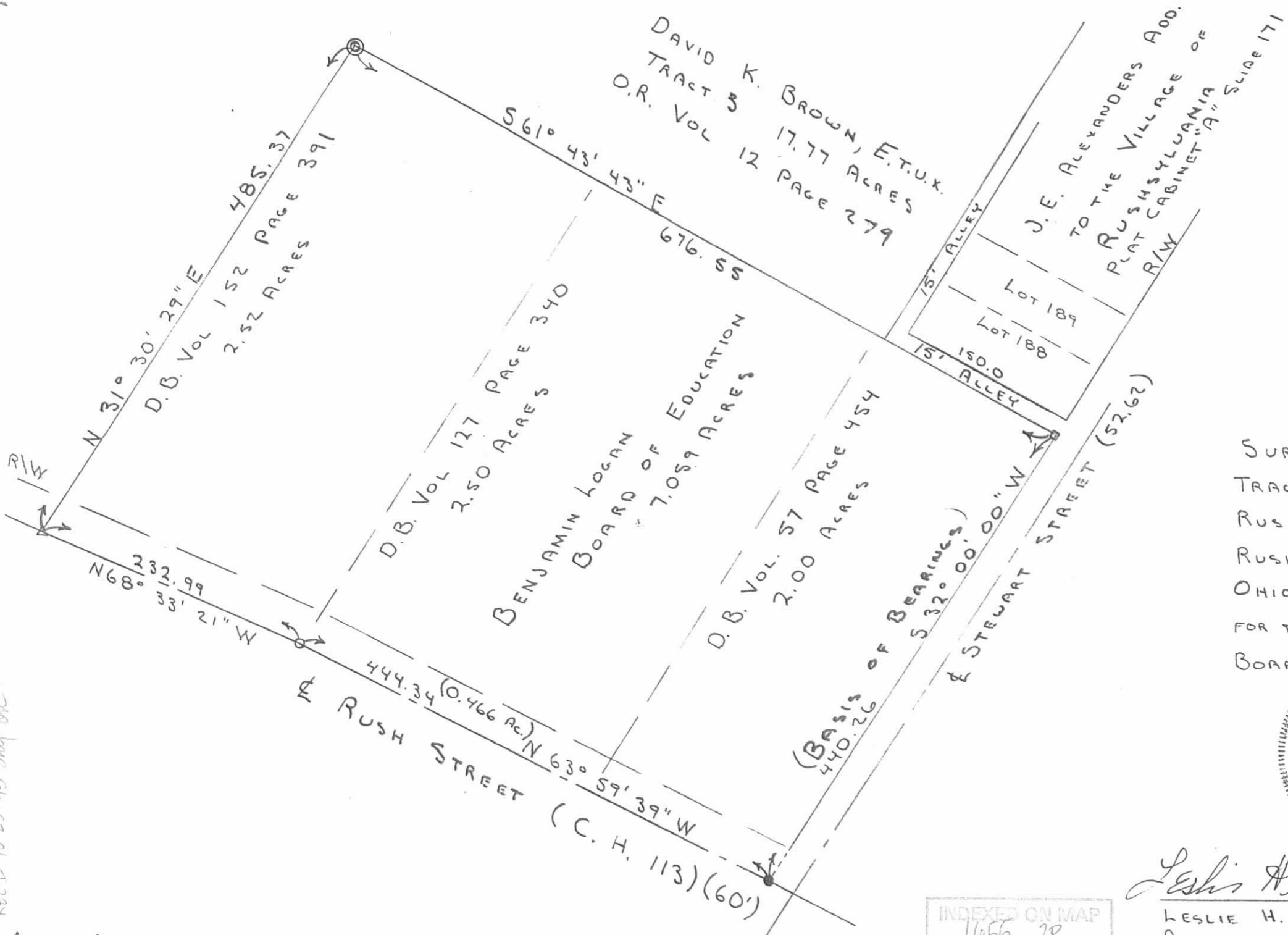
INDEXED ON MAP
1655 2D



Leslie H. Geeslin

REC'D 10-25-95 SMY OLC ✓

(D.L.G.)



SCALE: 1" = 100'

LEGEND: 100' 200'

- = 3/4" IRON BAR FO.
- △ = R/R SPK FO.
- ⊙ = ANGLE IRON POST FO.
- = 5/8" IRON BAR SET
- = P.K. NAIL SET IN CONC. WALK

SURVEY OF A 7.059 ACRE TRACT IN THE VILLAGE OF RUSHSYLVANIA, V.M.S. 13446, RUSHCREEK TWP., LOGAN CO., OHIO. OCTOBER 19, 1995 FOR THE BENJAMIN LOGAN BOARD OF EDUCATION.



Leslie H. Geeslin
 LESLIE H. GEESLIN
 RUSHSYLVANIA, OHIO
 (513) 468-2793

INDEXED ON MAP
1655 2P