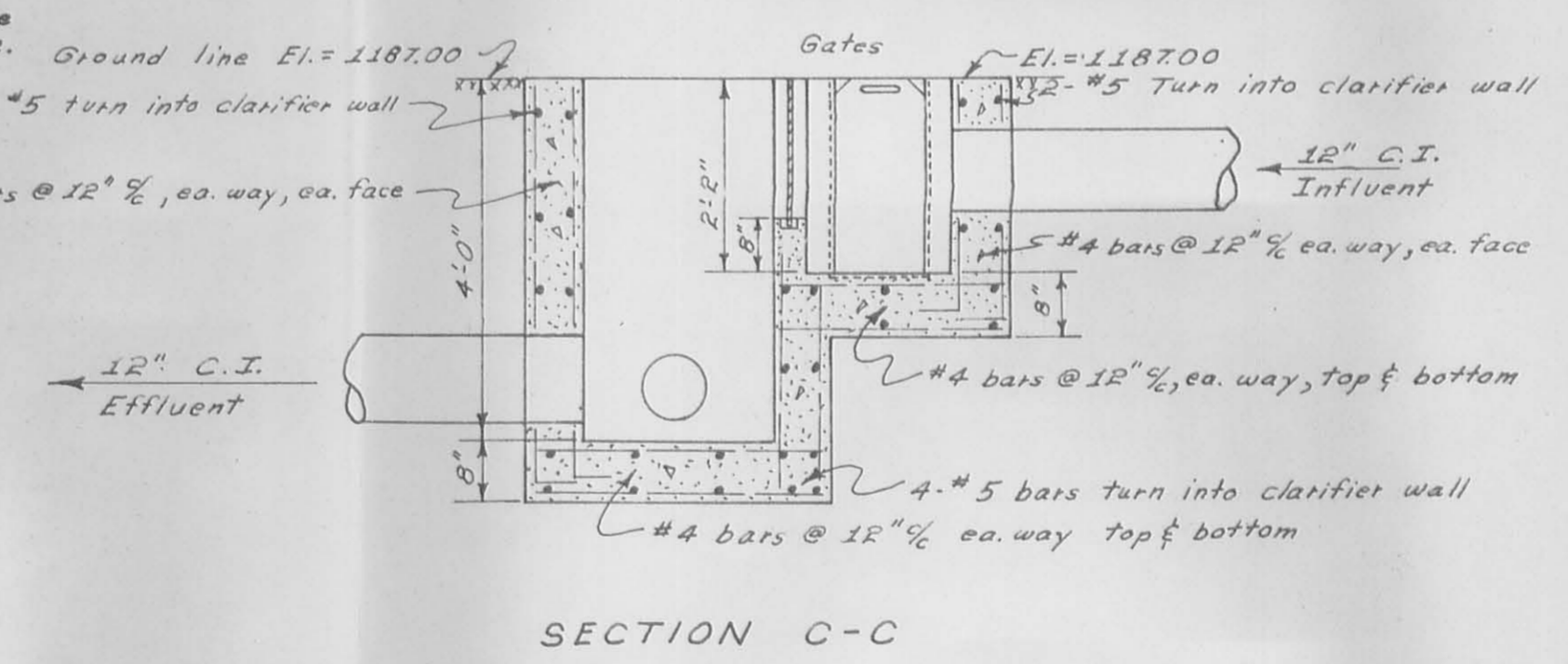
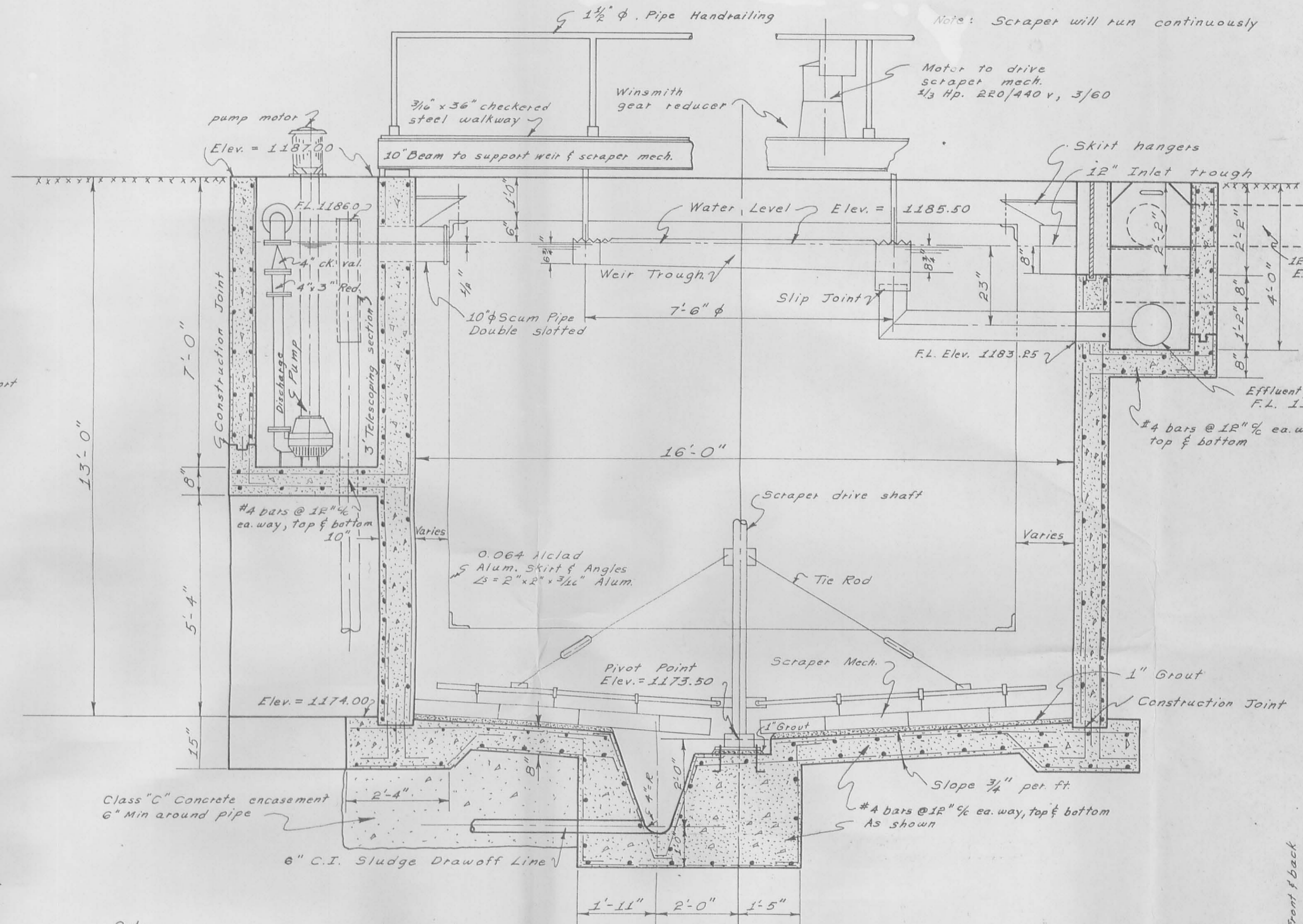


PLAN
Scale: 1/8" = 1'-0"

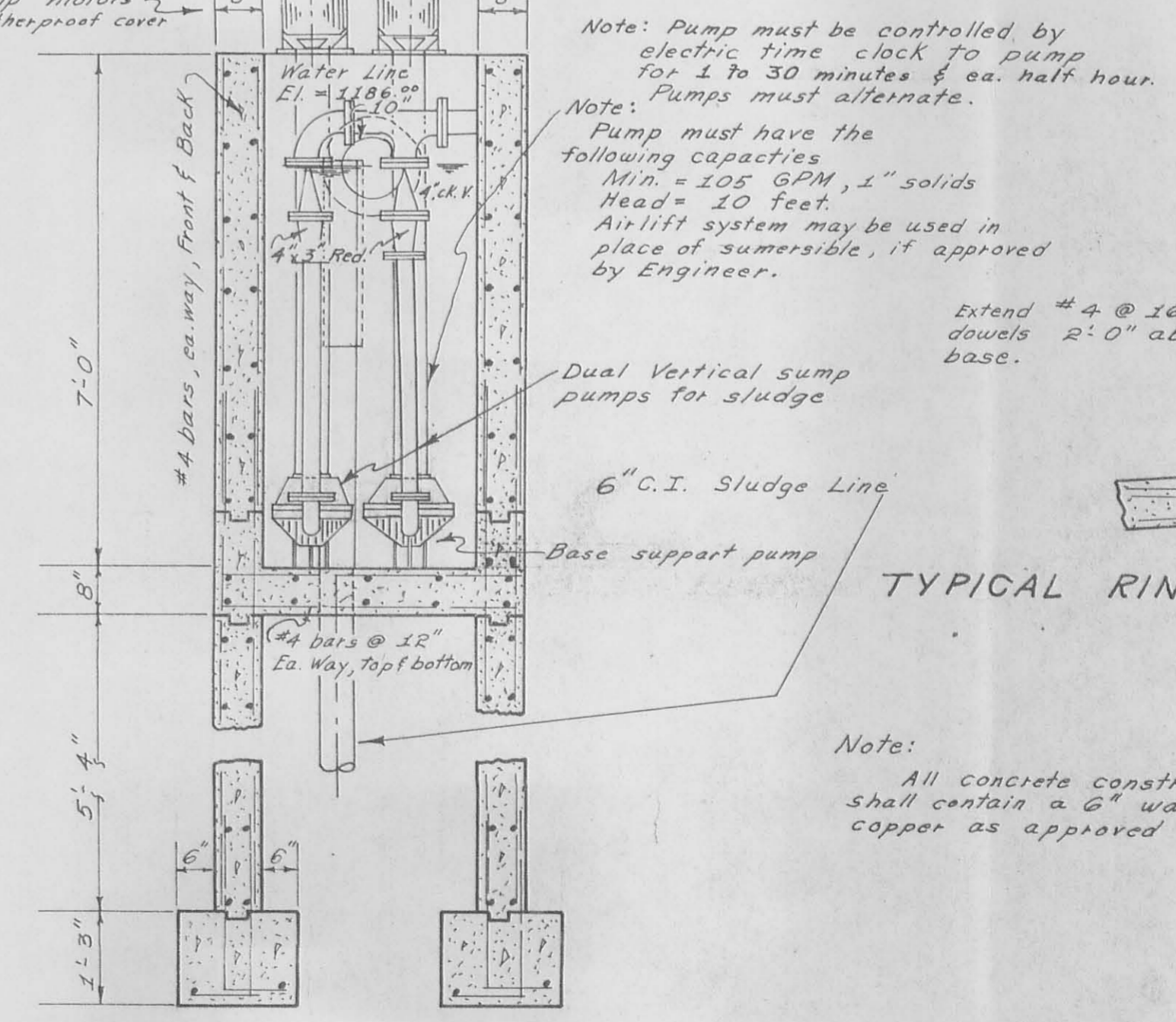


SECTION C-C

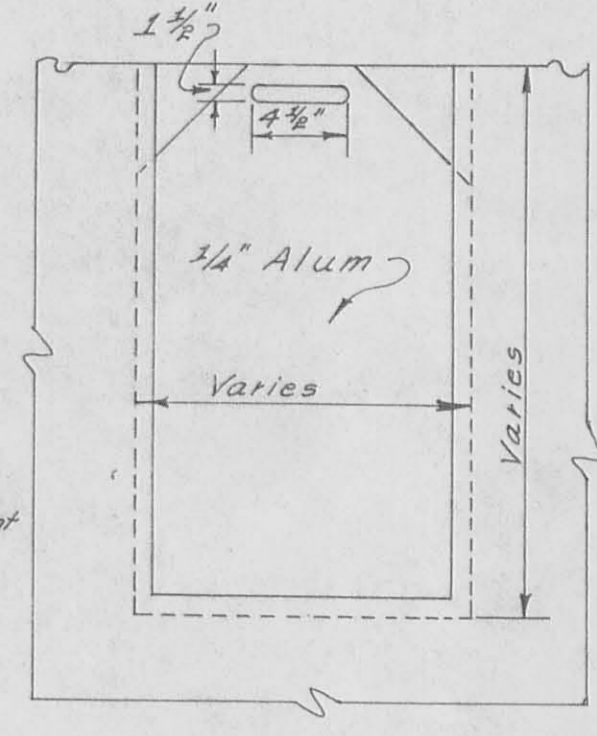
Notes:
See specification sheets for additional information. Manufacturers must submit detail drawings of clarifier equipment. Engineer will make adjustments in design as necessary during construction.



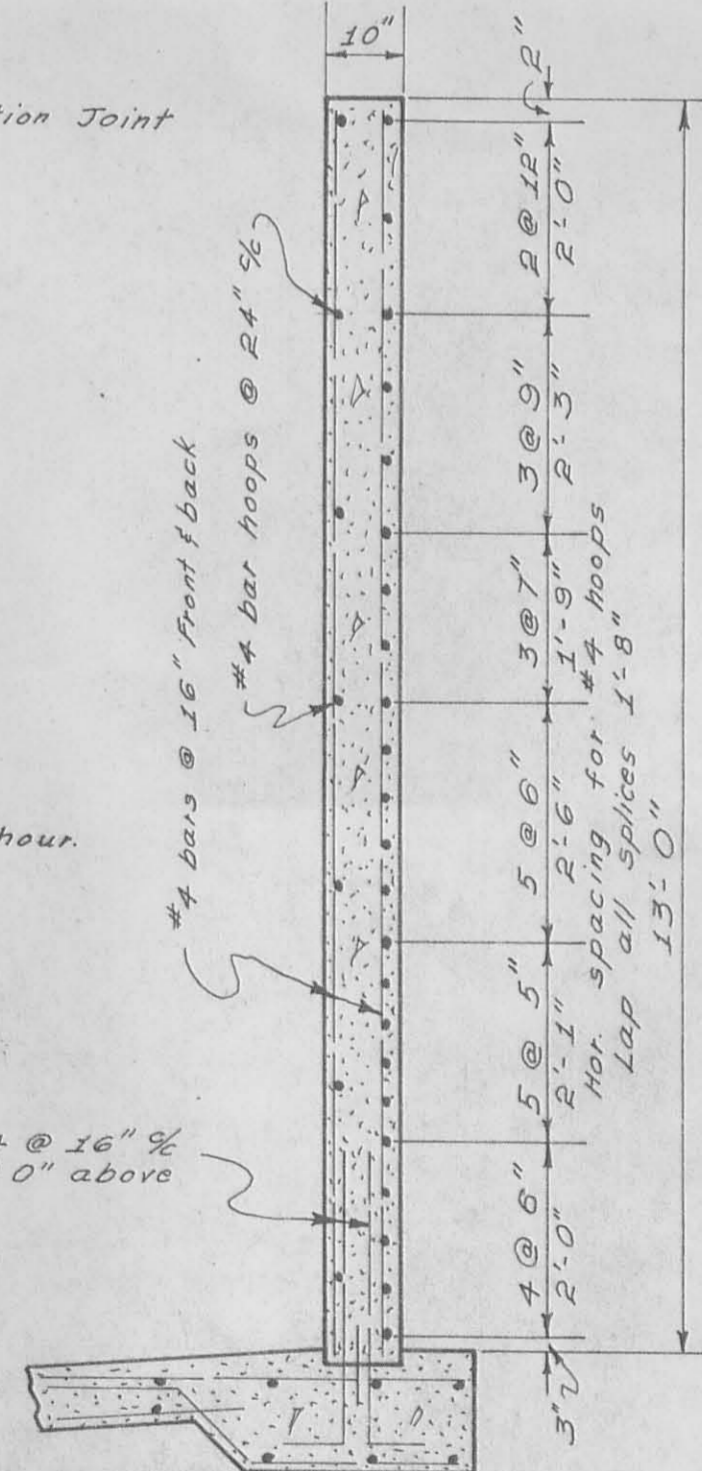
SECTION A-A (Rotated to show X-Section)



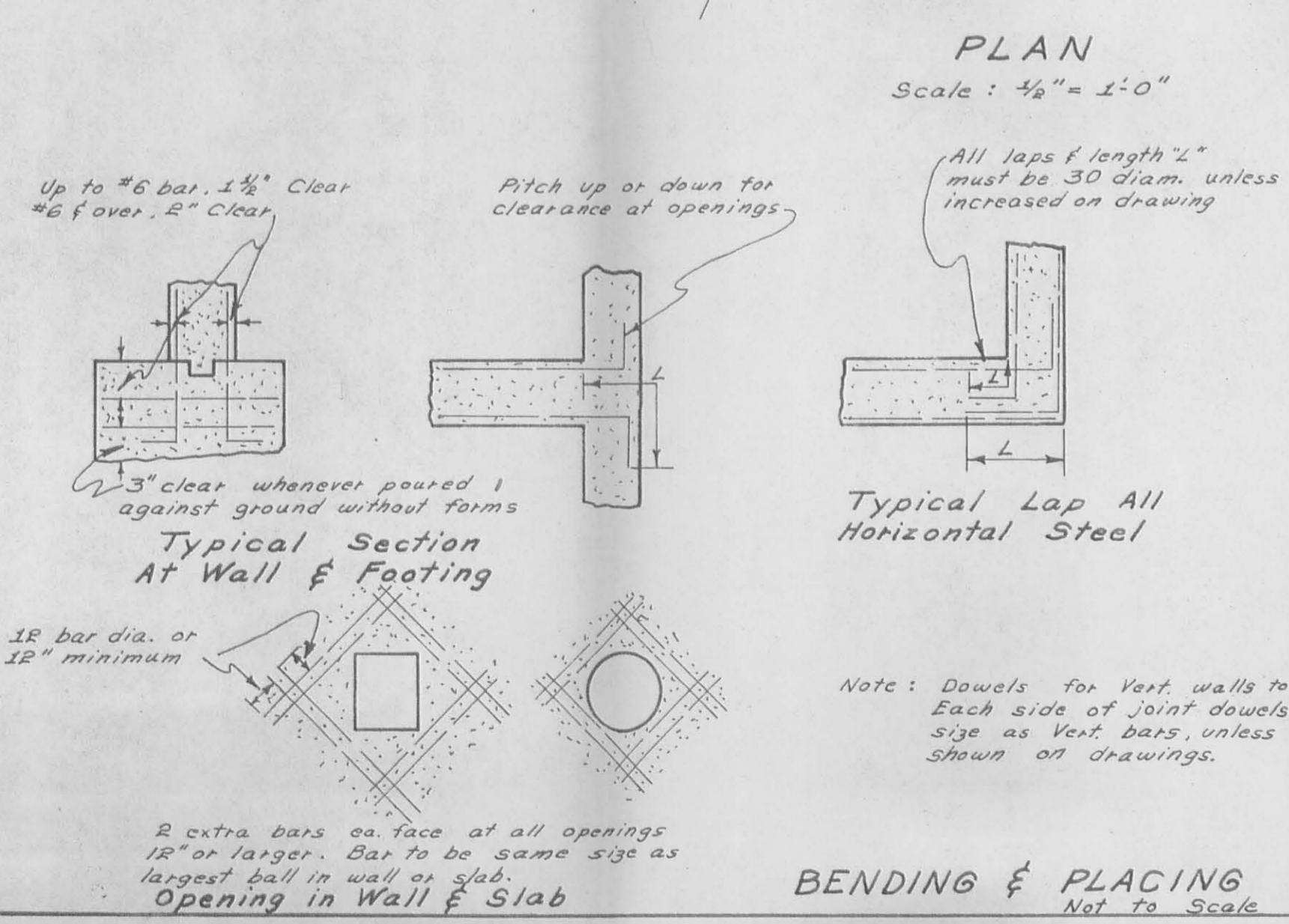
SECTION B-B



GATE DETAIL
Not to Scale

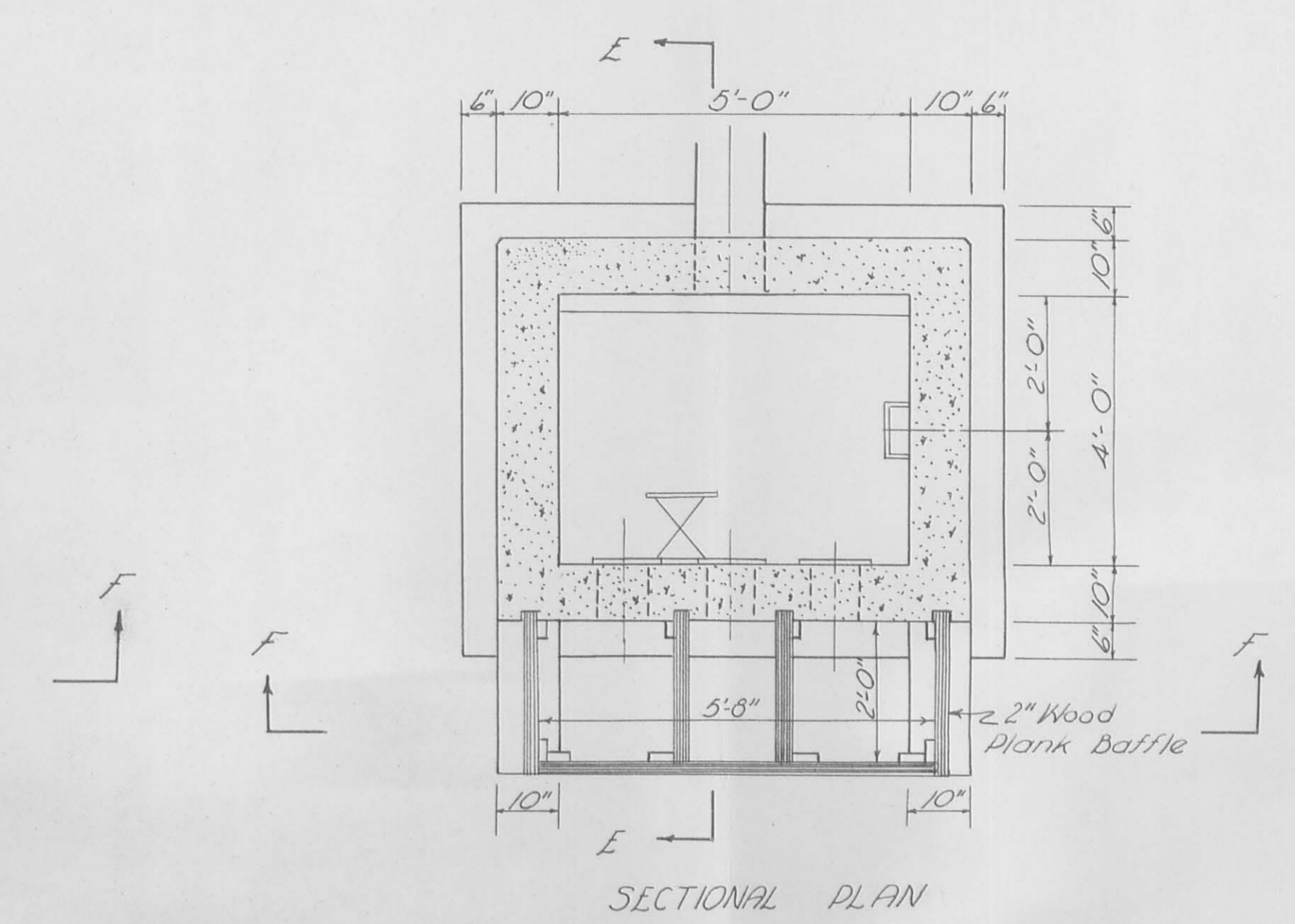
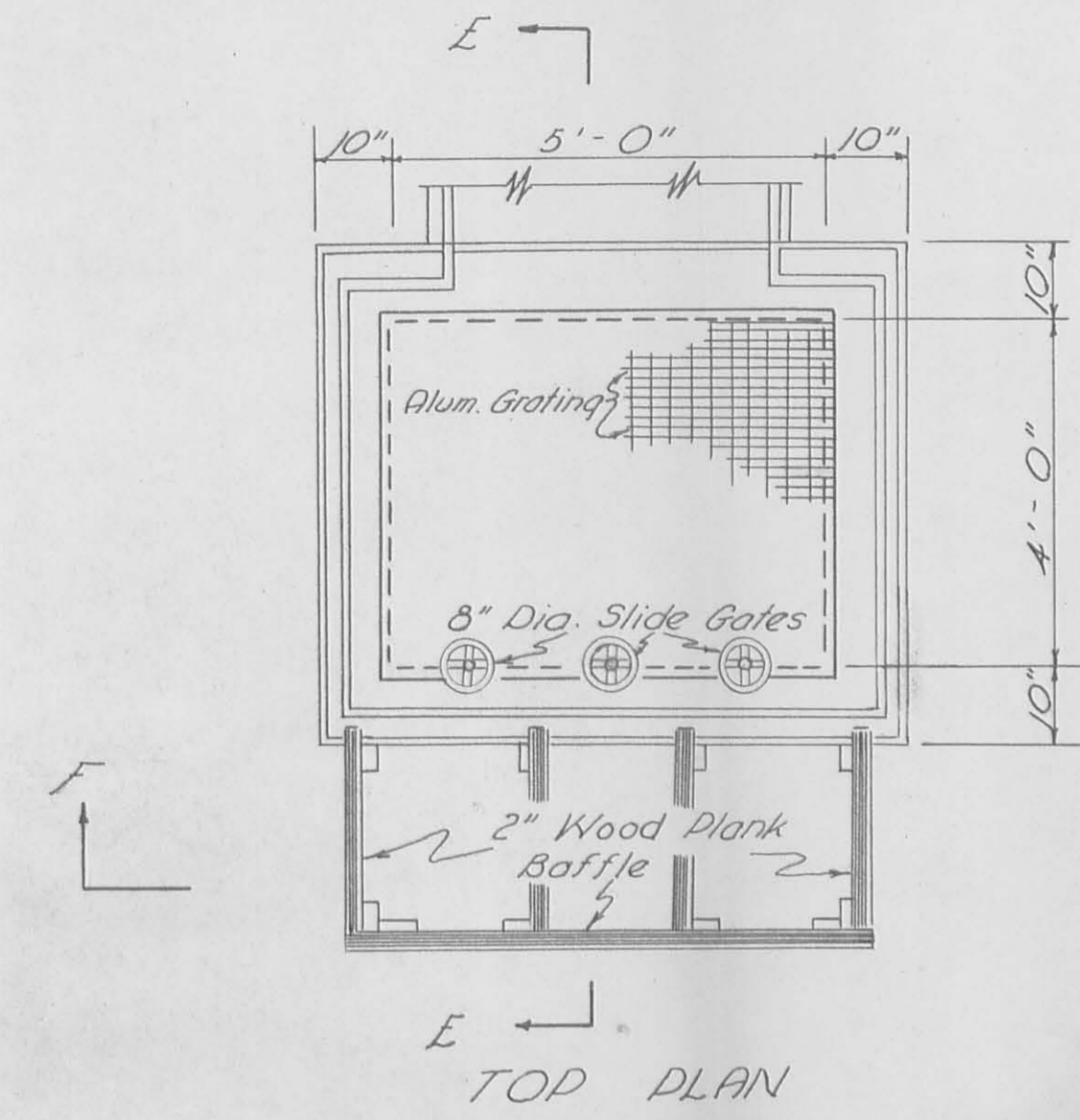


TYPICAL RING WALL REINFORCING SECTION
Scale: 1/8" = 1'-0"

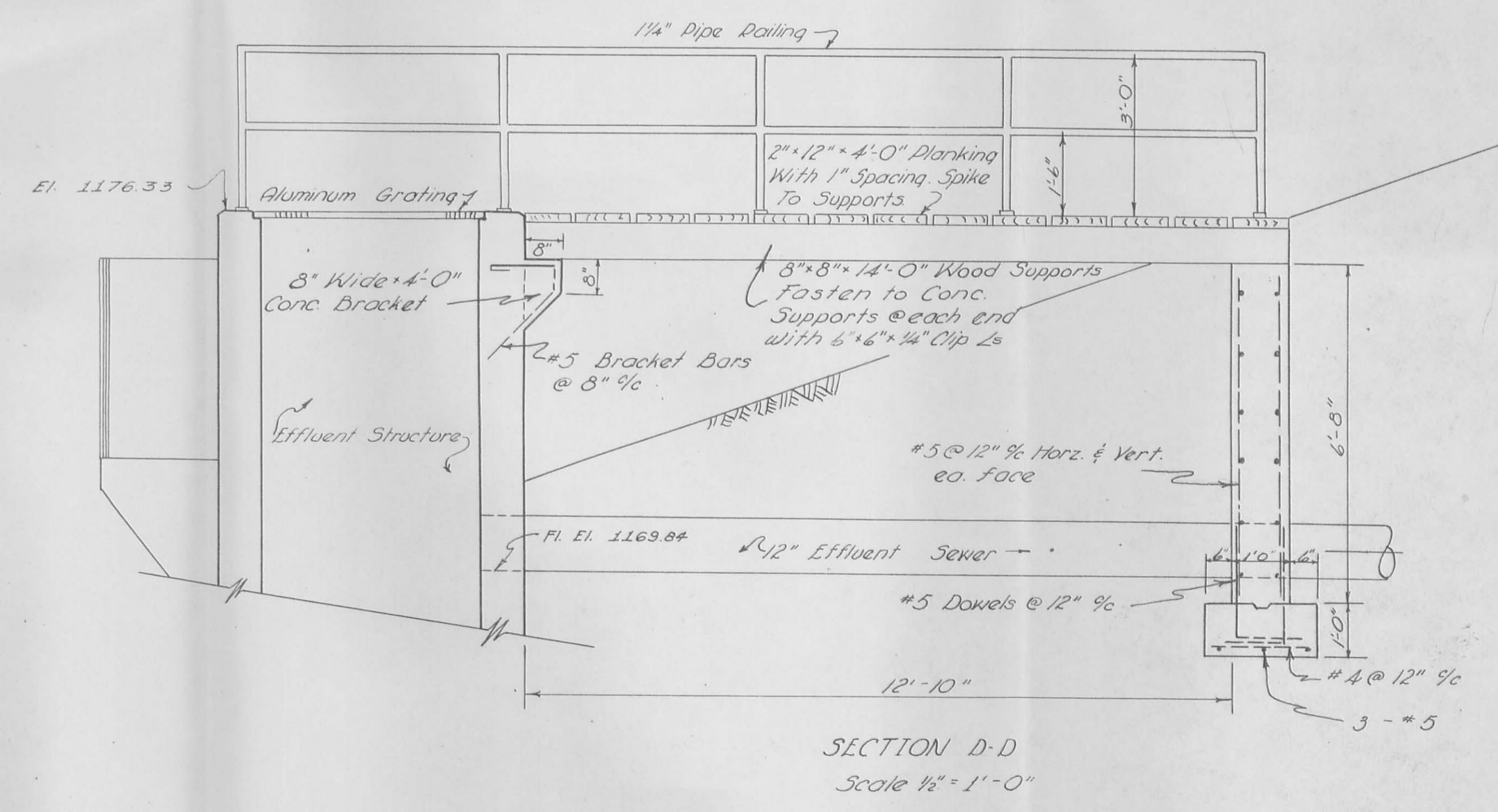
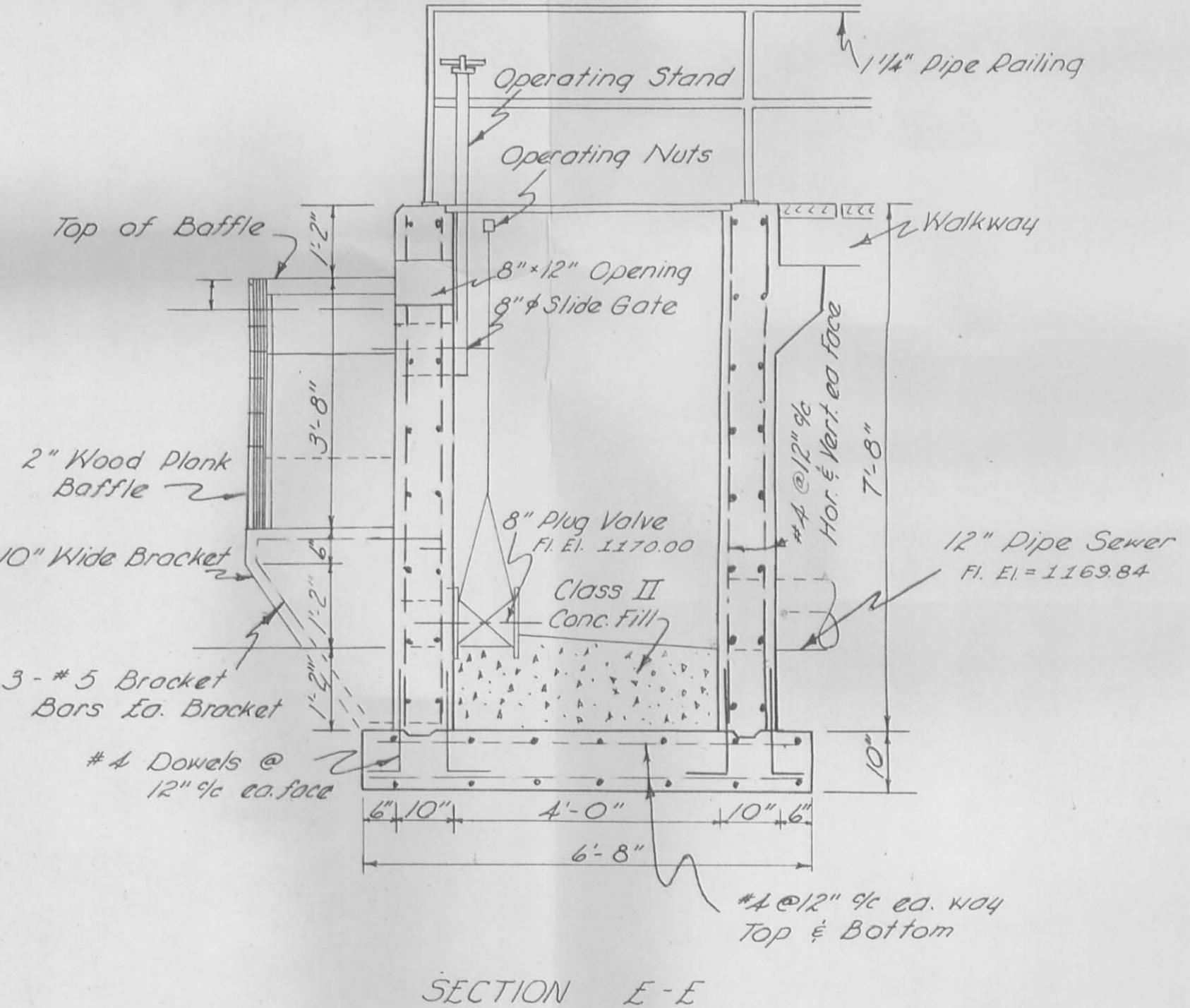
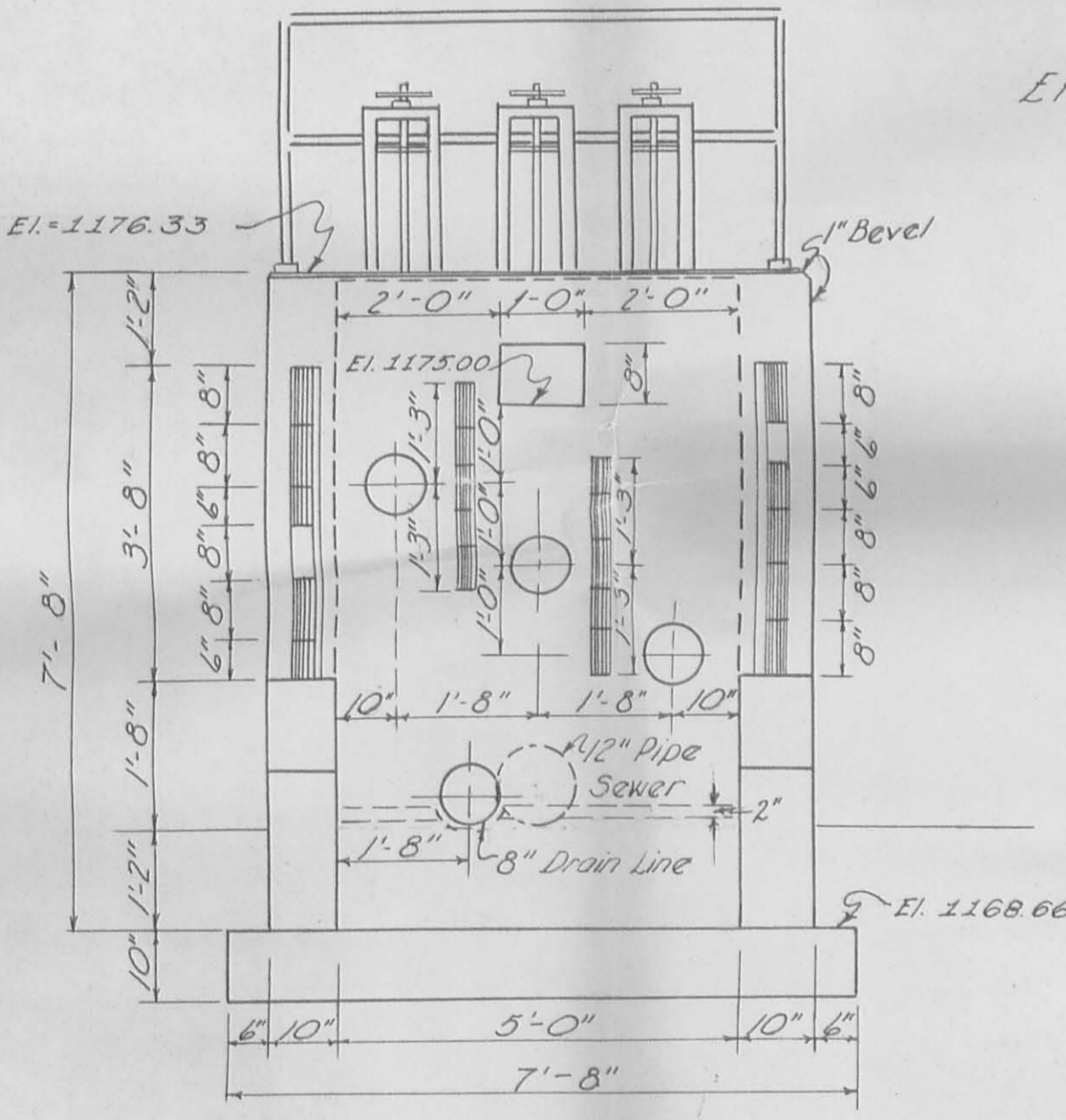
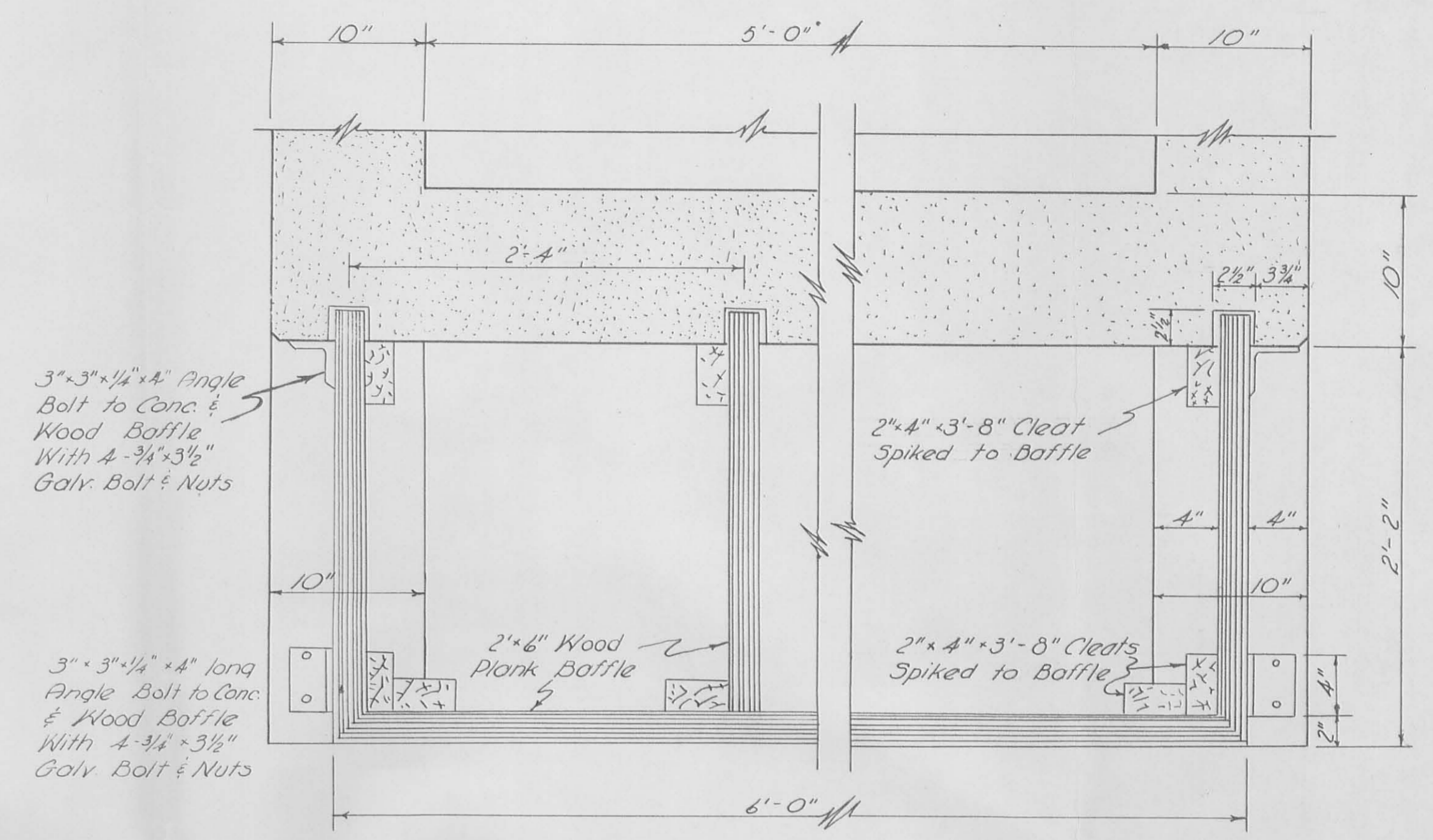


BENDING & PLACING REINFORCING
Not to Scale

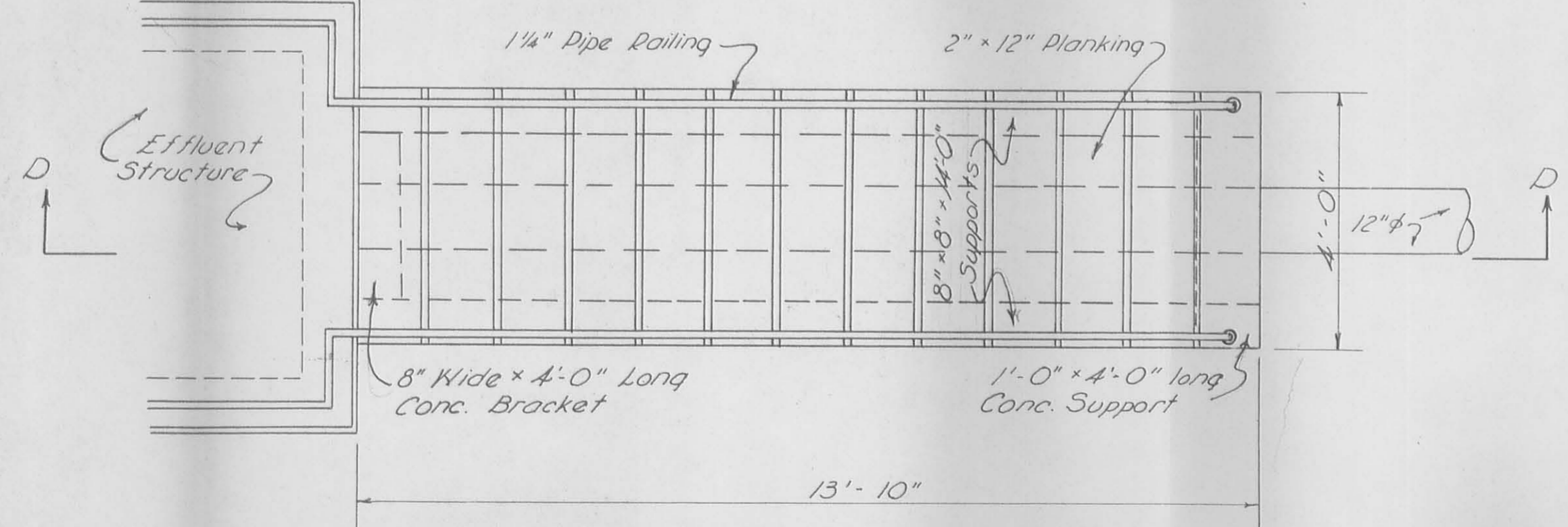
INSPECTED ON MAP
39461 IP-5



EFFLUENT STRUCTURE
Scale: 1/2" = 1'-0"

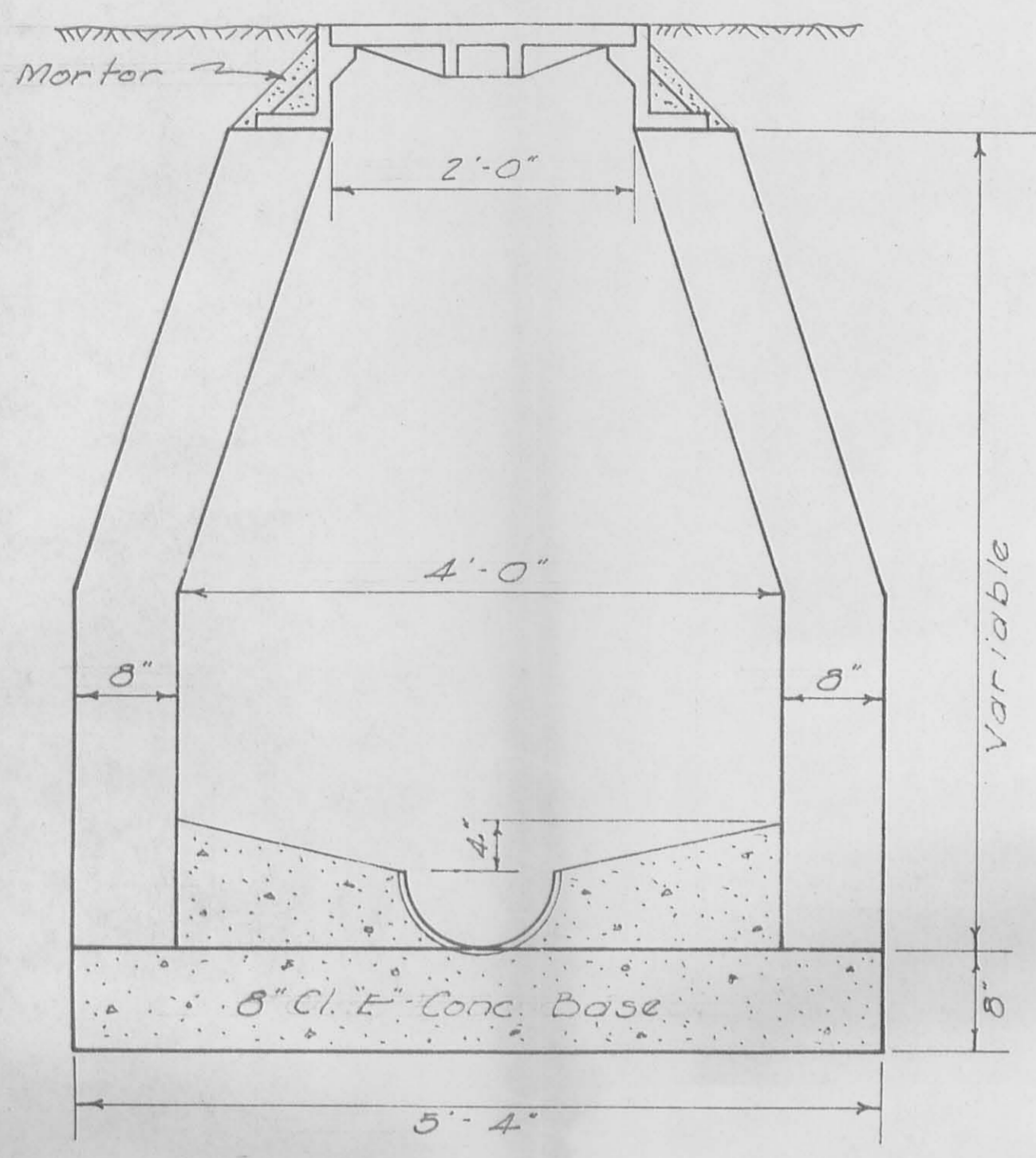


WALKWAY TO EFFLUENT STRUCTURE



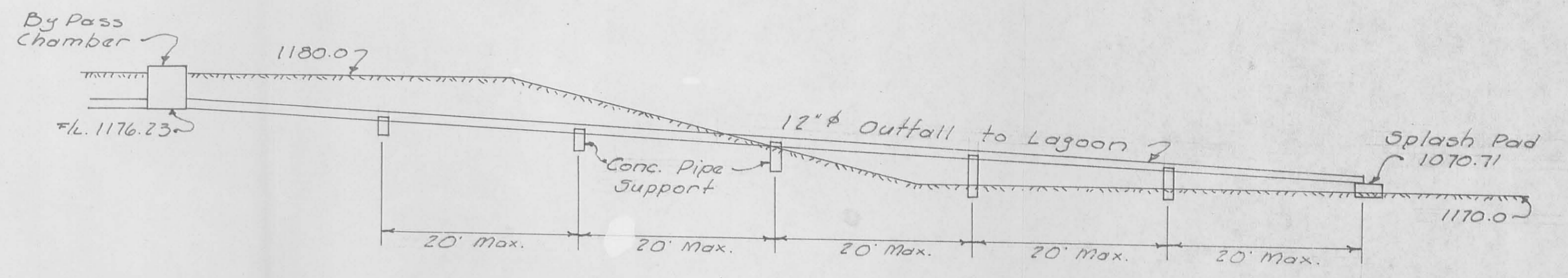
Note: Lumber to be impregnated with "Wolmanizing Salts"

INDEXED ON MAP
2961 P-4



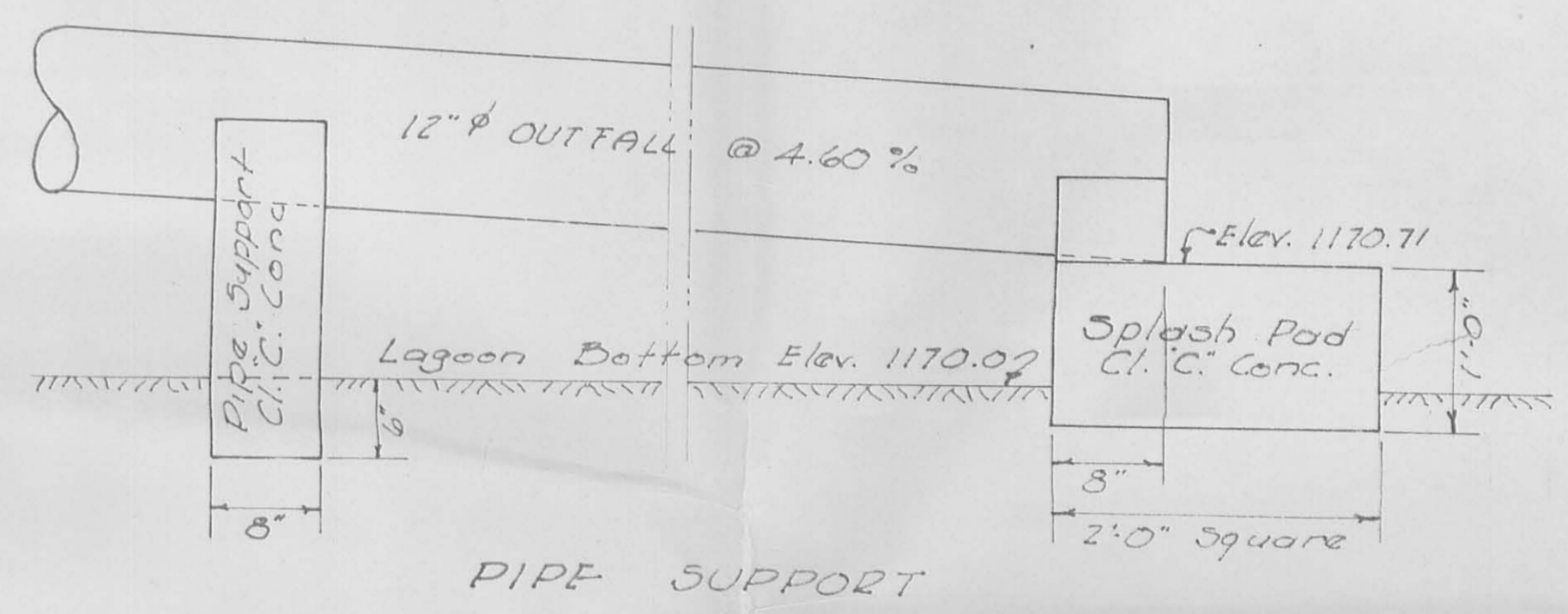
STANDARD MANHOLE

NOTES:
 Manholes may be constructed of brick, conc. blocks, precast conc. rings, or cast in place concrete.
 Min. wall thickness - 6"
 Channel section in the manhole shall be formed in conc. to conform to size of outlet pipe.
 Cast iron frame and cover shall have a min. weight of 275 lbs.

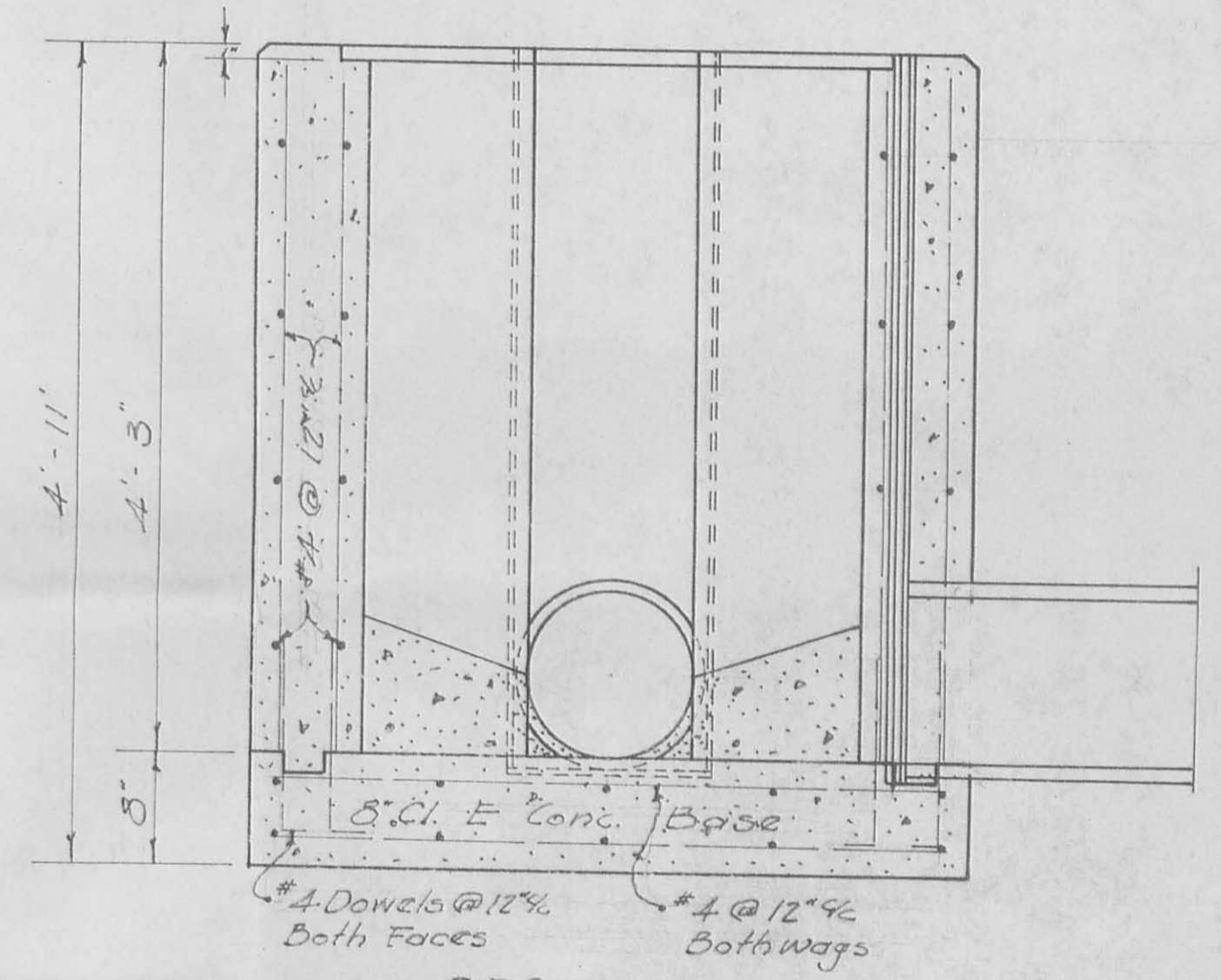


OUTFALL TO LAGOON

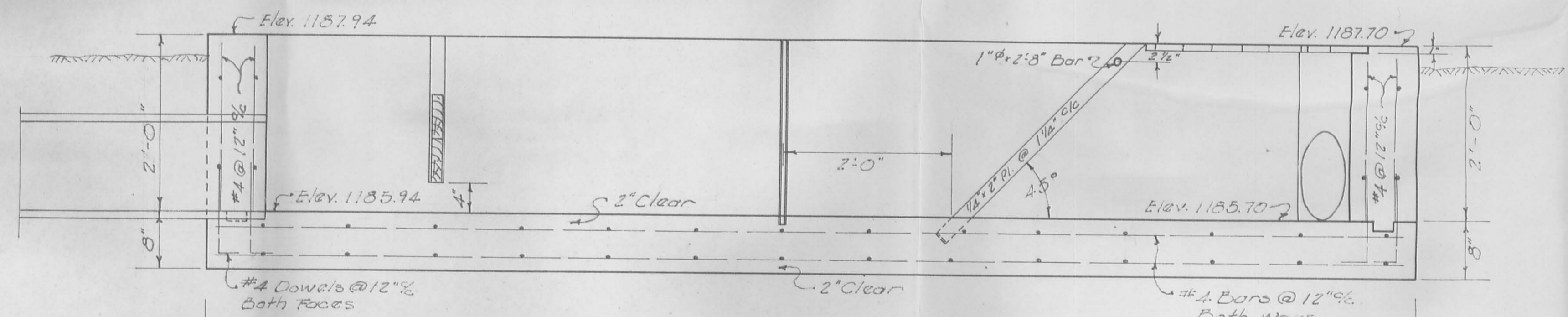
NOTE: One conc. pipe support to be placed at each joint of outfall pipe.



PIPE SUPPORT

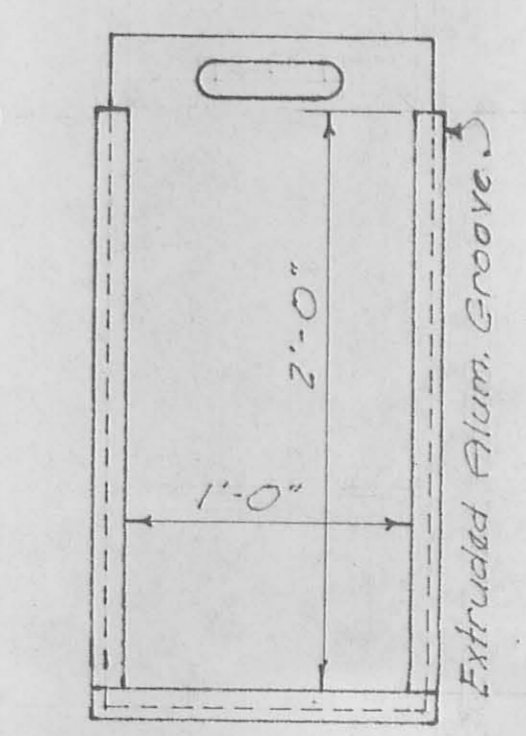
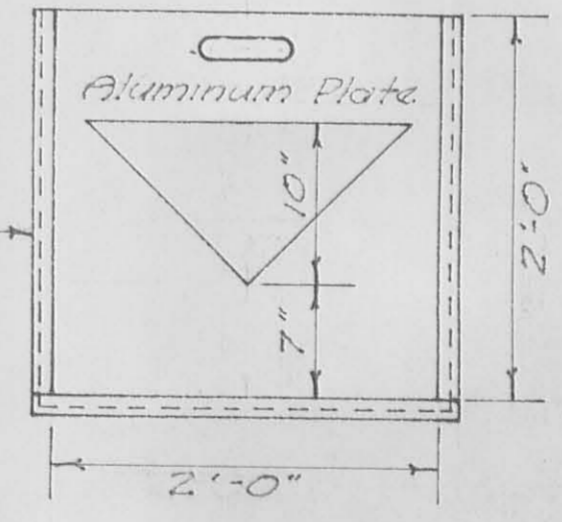


SEC. A-A
 BYPASS CHAMBER

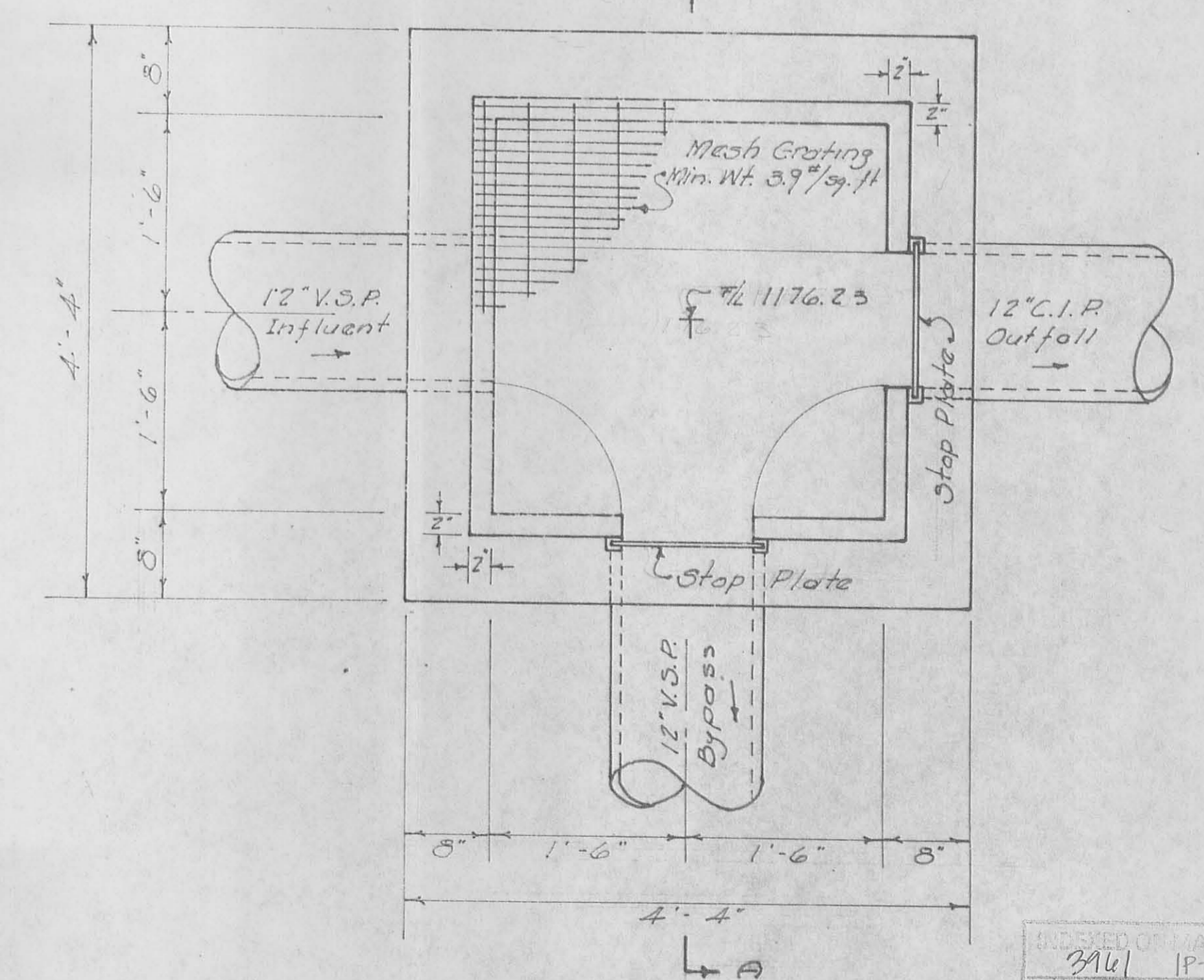


SEC. A-A
 SCALE 1"=1'

90°-V-NOTCH
 SHARP CRESTED WEIR



STOP PLATE
 1/4" Aluminum Plate



METER CHAMBER & BAR SCREEN
 SCALE 1"=1'