

3-30-17

# Lee Surveying and Mapping Co., Inc.



Land Surveys • Topography • Subdivisions • Construction Layout

117 N. Madriver St.  
Bellefontaine OH 43311



Phone: (937) 593-7335  
Fax: (937) 593-7444  
surveys@lsminc.us

## HUGHES, TRUSTEES 5.026 ACRES

Lying in Virginia Military Survey 13446, Village of Rushsylvania, Rushcreek Township, Logan County, Ohio.

Being out of the Clayton C. Hughes and Betty J. Hughes, Trustees 11.66 acre tract as deeded and described in Official Record 288, Page 365, Tract I of the Logan County Records of Deeds and being more particularly described as follows:

Commencing at a 1 inch iron rod found inside a monument box at the intersection of center-lines of Ohio Route 274 (Mill Street)(60 feet wide) and Sandusky Street (County Highway 9).

THENCE, with the center-line of Ohio Route 274, S 83°-39'-00"W, a distance of 1188.63 feet to a MAG nail set at the TRUE POINT OF BEGINNING.

THENCE, with the center-line of Ohio Route 274 the following two courses:

S 83°-39'-00"W, a distance of 169.40 feet to a 5/8 inch iron rod found at Station 355+25 per Logan County Engineer's X-22B.

S 83°-09'-00"W, a distance of 85.00 feet to a MAG nail set.

THENCE, N 03°-12'-27"W, a distance of 184.23 feet to a 5/8 inch iron rod set, passing a 5/8 inch iron rod set at 21.92 feet.

THENCE, N 85°-10'-01"E, a distance of 83.55 feet to a 5/8 inch iron rod set.

THENCE, N 06°-54'-33"W, a distance of 270.25 feet to a 5/8 inch iron rod set.

THENCE, S 83°-37'-11"W, a distance of 385.66 feet to a 5/8 inch iron rod set.

THENCE, N 07°-06'-45"W, a distance of 249.19 feet to a 5/8 inch iron rod set.

THENCE, with the south line of the Ronald D. Cramer and Mari R. Cramer original 18.776 acre tract (O.R. 152, Pg. 986), S 78°-20'-00"E, a distance of 751.85 feet to a 5/8 inch iron rod set.

THENCE, with the west line of a 12 feet wide alley, S 12°-49'-19"W, a distance of 495.12 feet to the point of beginning, passing a 5/8 inch iron rod set at 463.36 feet.


Containing 5.026 acres of which 0.178 acre is within the highway right-of-way.

Property is subject to any and all previous easements and rights-of-way of record.

The basis for bearings is the center-line of Ohio Route 274, being S 83°-39'-00"W, and all other bearings are from angles and distances measured in a field survey by Lee Surveying and Mapping Co., Inc. on March 15, 2017.



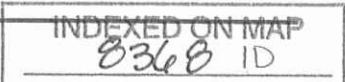
Description prepared by:

  
Jeffrey I. Lee  
Professional Surveyor 6359  
March 15, 2017

L-62240317

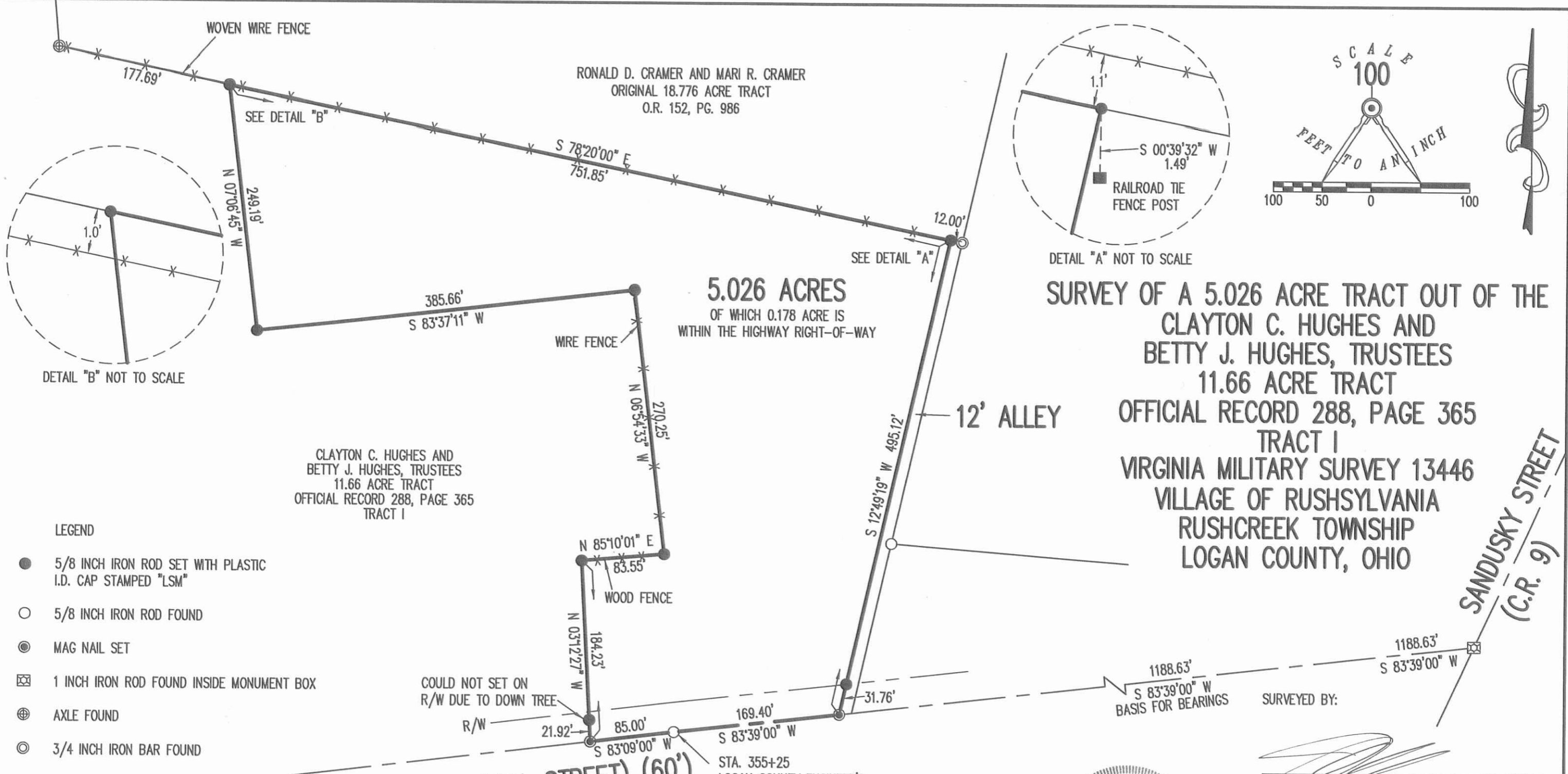
ORIGINAL STAMP IN GREEN

MEMBER: NATIONAL SOCIETY OF PROFESSIONAL SURVEYORS (NSPS)  
PROFESSIONAL LAND SURVEYORS OF OHIO (PLSO)



3-30-17

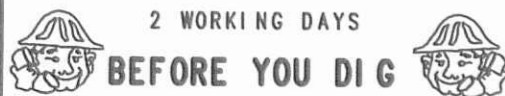
**APPROVED**



**LEGEND**

- 5/8 INCH IRON ROD SET WITH PLASTIC I.D. CAP STAMPED "LSM"
- 5/8 INCH IRON ROD FOUND
- ⊙ MAG NAIL SET
- ⊠ 1 INCH IRON ROD FOUND INSIDE MONUMENT BOX
- ⊕ AXLE FOUND
- ⊙ 3/4 INCH IRON BAR FOUND

THIS SURVEY WAS PREPARED IN THE ABSENCE OF A COMPLETE AND ACCURATE TITLE SEARCH AND DOES NOT GUARANTEE TITLE.



CALL TOLL FREE **800-362-2764**

OHIO UTILITIES PROTECTION SERVICE

**OHIO ROUTE 274 (MILL STREET) (60')**

STA. 355+25  
LOGAN COUNTY ENGINEER'S  
X-22B



ORIGINAL STAMP IN GREEN

SURVEYED BY:

JEFFREY I. LEE  
PROFESSIONAL SURVEYOR 6359  
MARCH 15, 2017

COPYRIGHT 2017 BY:  
**LEE SURVEYING & MAPPING CO., INC.**  
117 North Madriver Street  
BELLEFONTAINE, OHIO 43311  
(937) 593-7335  
WWW.LSMINC.US  
surveys@lsminc.us

ADW D0317 62240317 L-6224-3

INDEXED ON MAP  
8368 1P