

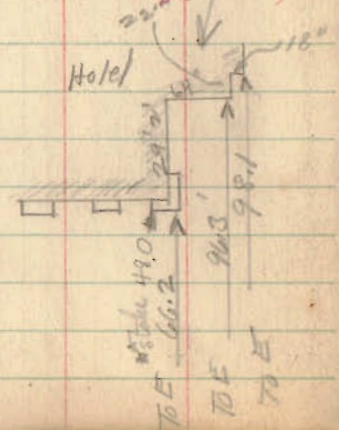
Beatley survey Russel Point

- A Reinf bar see bk 390 pp 47
- B. hub with tack.
- D. hub with tack.
- C. point 5' from I.P.
- E. hub found placed 1. Pipe inside & set up at "E" 100' from D and H sighted on "C" produced to M & N measured 450' from A turned 90° found "E" which this line missed 2" set up on this line and 12.5 ft East of E turned 90° missed Wrights Hub. 19"

(See Note Book 385 Page 46)

579

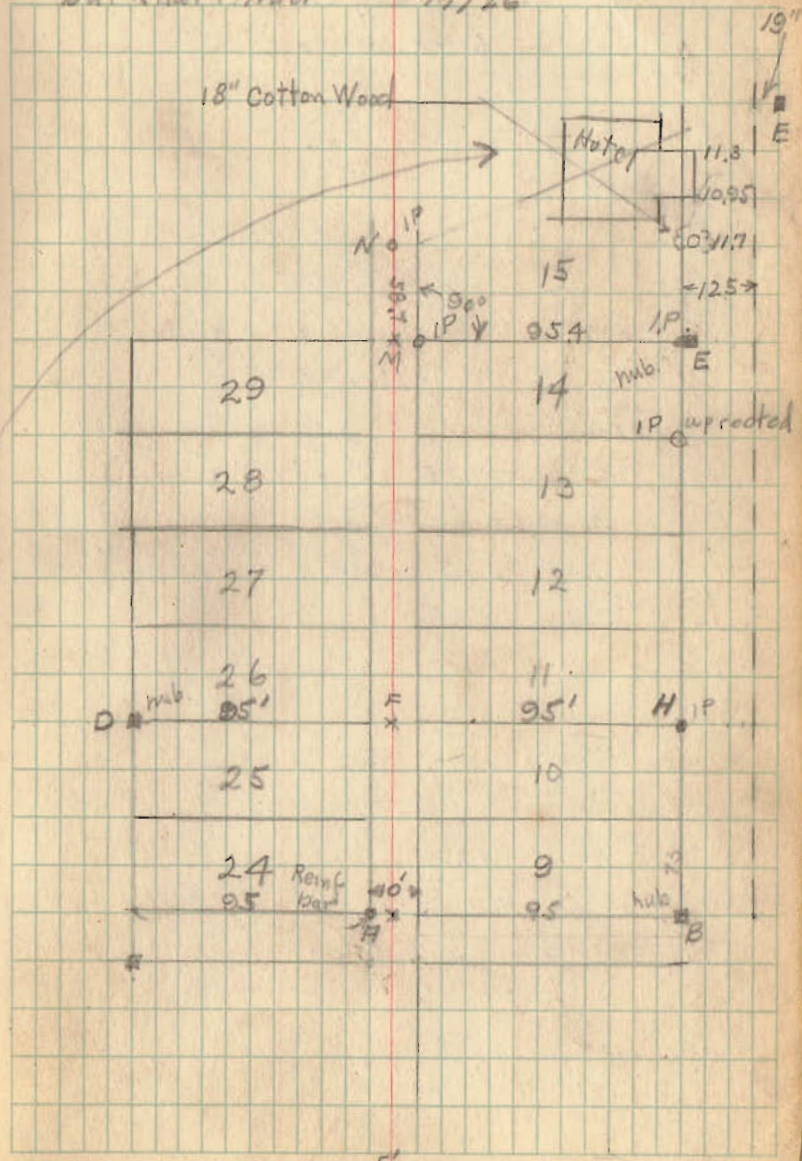
INDEXED ON MAP



Burkhart Add

3/9/26

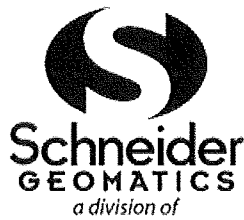
W A Montgomery
Wm Salwicker



5' x C

9-9-2021

APPROVED



**Schneider
GEOMATICS**
a division of
Schneider Engineering Corp

1012 Harrison Avenue
Suite 3
Harrison, OH 45030
317-826-7100
317-826-7200 FAX

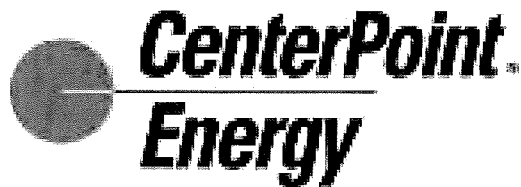


EXHIBIT "A"

Permanent Easement
Pt. Sec. 36-T6-R8E &
Pt. Lots 13-17
F.A. Burkhardt's Park Heights Subdivision
Plat Cabinet A, Slide 217
Russells Point
Washington Township
Logan County, Ohio

Owner:

Parcel #52-032-10-04-035-000, 52-032-10-04-004-000, 52-032-10-04-003-002 &
52-032-10-04-003-003

Jack R. Beatley, Trustee u/a dated May 5, 1993 with Jack R. Beatley, Grantor
(1/2 interest)

Quit-Claim Deed

May 5, 1993

Official Record 189, Page 417 (Tracts No. 3, 4 & 7)

Jack R. Beatley, Trustee u/a dated February 19, 1993 with Patricia Joanne
Beatley, Grantor (1/2 interest)

Quit-Claim Deed

February 19, 1993

Official Record 183, Page 892 (Tracts No. 3, 4 & 7)

2,508 square feet permanent easement

0.058 acres +/- permanent easement

Permanent Easement

Part of Lots 13 through 17 of the plat of F. A. Burkhardt's Park Heights
Subdivision recorded in Plat Cabinet A, Slide 217 in the Office of the Recorder
of Logan County, Ohio, part of Lot 46-148 of the plat of Indian Lake Reservoir
Lands recorded in Plat Cabinet A, Slide 437 in said Recorder's Office and part
of a 3.99-acre tract in Section 36, Township 6, Range 8 East, Russells Point,
Washington Township, Logan County, Ohio and being a 5-foot wide easement upon
tracts of land conveyed to Jack R. Beatley, Trustee by deeds recorded in Official
Record 189, Page 417 and Official Record 183, Page 892 (Tracts No. 3, 4 and 7)
in the Office of the Recorder of Logan County, Ohio, being described as follows:

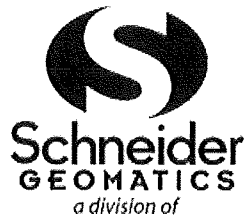
Schneider Geomatics

Job No. 13542

September 8, 2021

Document No. T:\13k\13542\CAD\13542.docx

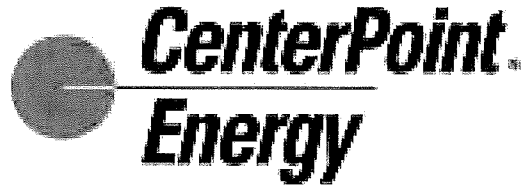
INDEXED ON MAP
579



Schneider
GEOMATICS
a division of

Schneider Engineering Corp

1012 Harrison Avenue
Suite 3
Harrison, OH 45030
317-826-7100
317-826-7200 FAX

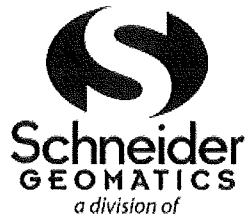


COMMENCING at a point being the intersection of the south line of Lot 12 in said F.A. Burkhart's Park Heights Subdivision with the west right-of-way line of State Road 708 (Orchard Island Road); thence along said west right-of-way line North 23 degrees 38 minutes 53 seconds East 50.03 feet to a point being the point of curvature of a tangent curve to the right having a radius of 113.91 feet and a central angle of 41 degrees 44 minutes 31 seconds; thence continuing along said west right-of-way line and along said curve an arc distance of 82.99 feet being subtended by a chord bearing North 44 degrees 31 minutes 09 seconds East 81.17 feet to a point being the POINT OF BEGINNING and being the point of curvature of a non-tangent curve to the left having a radius of 15.00 feet and a central angle of 59 degrees 06 minutes 33 seconds; thence across the land of the grantor the following eleven (11) courses:

- (1) along said curve an arc distance of 15.47 feet being subtended by a chord bearing North 24 degrees 10 minutes 47 seconds West 14.80 feet to a point;
- (2) North 53 degrees 44 minutes 04 seconds West 48.24 feet to a point being the point of curvature of a tangent curve to the right having a radius of 147.50 feet and a central angle of 34 degrees 57 minutes 52 seconds;
- (3) along said curve an arc distance of 90.01 feet being subtended by a chord bearing North 36 degrees 15 minutes 08 seconds West 88.62 feet to a point being the point of reverse curvature of a curve to the left having a radius of 10.00 feet and a central angle of 53 degrees 18 minutes 13 seconds;
- (4) along said curve an arc distance of 9.30 feet being subtended by a chord bearing North 45 degrees 25 minutes 18 seconds West 8.97 feet to a point being the point of reverse curvature of a curve to the right having a radius of 35.00 feet and a central angle of 242 degrees 47 minutes 15 seconds;
- (5) along said curve an arc distance of 148.31 feet being subtended by a chord bearing North 49 degrees 19 minutes 13 seconds East 59.75 feet to a point;
- (6) South 23 degrees 28 minutes 09 seconds West 6.22 feet to a point;
- (7) South 66 degrees 31 minutes 51 seconds East 3.17 feet to a point on a non-tangent curve to the right having a radius of 35.00 feet and a central angle of 27 degrees 35 minutes 16 seconds;
- (8) along said curve an arc distance of 16.85 feet being subtended by a chord bearing South 15 degrees 57 minutes 18 seconds West 16.69 feet to a point being the point of reverse curvature of a curve to the left

Schneider Geomatics
Job No. 13542
September 8, 2021
Document No. T:\13k\13542\CAD\13542.docx

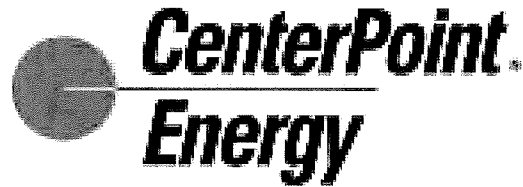




**Schneider
GEOMATICS**
a division of

Schneider Engineering Corp

1012 Harrison Avenue
Suite 3
Harrison, OH 45030
317-826-7100
317-826-7200 FAX

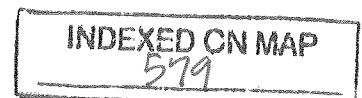


- having a radius of 15.00 feet and a central angle of 49 degrees 19 minutes 40 seconds;
- (9) along said curve an arc distance of 12.91 feet being subtended by a chord bearing South 05 degrees 05 minutes 06 seconds West 12.52 feet to a point being the point of reverse curvature of a curve to the left having a radius of 112.50 feet and a central angle of 34 degrees 09 minutes 19 seconds;
 - (10) along said curve an arc distance of 67.06 feet being subtended by a chord bearing South 36 degrees 39 minutes 24 seconds East 66.08 feet to a point;
 - (11) South 53 degrees 44 minutes 04 seconds East 97.71 feet to a point on the aforesaid west right-of-way line;

Thence along said west right-of-way line South 82 degrees 01 minute 23 seconds West 7.17 feet to a point; thence across the land of the Grantor the following eight (8) courses:

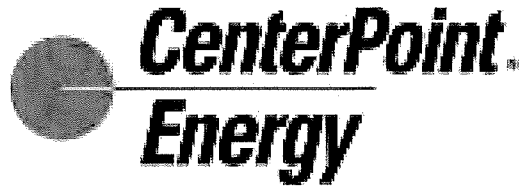
- (1) North 53 degrees 44 minutes 04 seconds West 92.58 feet to a point being the point of curvature of a tangent curve to the right having a radius of 117.50 feet and a central angle of 34 degrees 09 minutes 19 seconds;
- (2) along said curve an arc distance of 70.04 feet being subtended by a chord bearing North 36 degrees 39 minutes 24 seconds West 69.01 feet to a point being the point of reverse curvature of a curve to the left having a radius of 20.00 feet and a central angle of 49 degrees 19 minutes 40 seconds;
- (3) along said curve an arc distance of 17.22 feet being subtended by a chord bearing North 05 degrees 05 minutes 06 seconds East 16.69 feet to a point being the point of reverse curvature of a curve to the left having a radius of 30.00 feet and a central angle of 281 degrees 49 minutes 20 seconds;
- (4) along said curve an arc distance of 147.56 feet being subtended by a chord bearing South 68 degrees 50 minutes 16 seconds West 37.83 feet to a point being the point of reverse curvature of a curve to the right having a radius of 15.00 feet and a central angle of 53 degrees 18 minutes 13 seconds;
- (5) along said curve an arc distance of 13.95 feet being subtended by a chord bearing South 45 degrees 25 minutes 18 seconds East 13.46 feet to a point being the point of reverse curvature of a curve to the left having a radius of 142.50 feet and a central angle of 34 degrees 57

Schneider Geomatics
Job No. 13542
September 8, 2021
Document No. T:\13k\13542\CAD\13542.docx



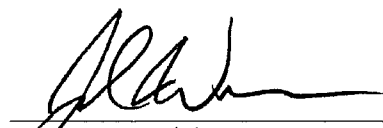


1012 Harrison Avenue
 Suite 3
 Harrison, OH 45030
 317-826-7100
 317-826-7200 FAX

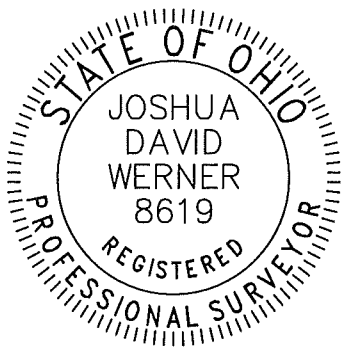


- minutes 52 seconds;
- (6) along said curve an arc distance of 86.96 feet being subtended by a chord bearing South 36 degrees 15 minutes 08 seconds East 85.62 feet to a point;
 - (7) South 53 degrees 44 minutes 04 seconds East 48.24 feet to a point being the point of curvature of a tangent curve to the right having a radius of 20.00 feet and a central angle of 51 degrees 32 minutes 55 seconds;
 - (8) along said curve an arc distance of 17.99 feet being subtended by a chord bearing South 27 degrees 57 minutes 36 seconds East 17.39 feet to a point on the aforesaid west right-of-way line and being on a non-tangent curve to the left having a radius of 113.91 feet and a central angle of 02 degrees 45 minutes 54 seconds;
- Thence along said west right-of-way line and said curve an arc distance of 5.50 feet being subtended by a chord bearing South 66 degrees 46 minutes 22 seconds West 5.50 feet to the POINT OF BEGINNING. Containing 0.058 acres, more or less.

The above description was prepared on September 8, 2021 by Joshua David Werner, Ohio Professional Surveyor Number 8619, and is based on record documents found in said Recorder's Office and other sources.

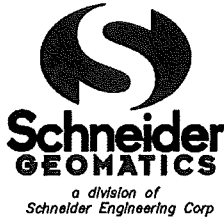


 Joshua David Werner
 Professional Surveyor #8619
 September 8, 2021



Schneider Geomatics
 Job No. 13542
 September 8, 2021
 Document No. T:\13k\13542\CAD\13542.docx



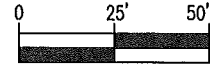


1012 Harrison Ave.
Suite 3
Harrison, OH 45030
317-826-7100
317-826-7110 FAX

Exhibit "B"

LEGEND

- Permanent Easement
- Denotes Deed Line or Ownership Change

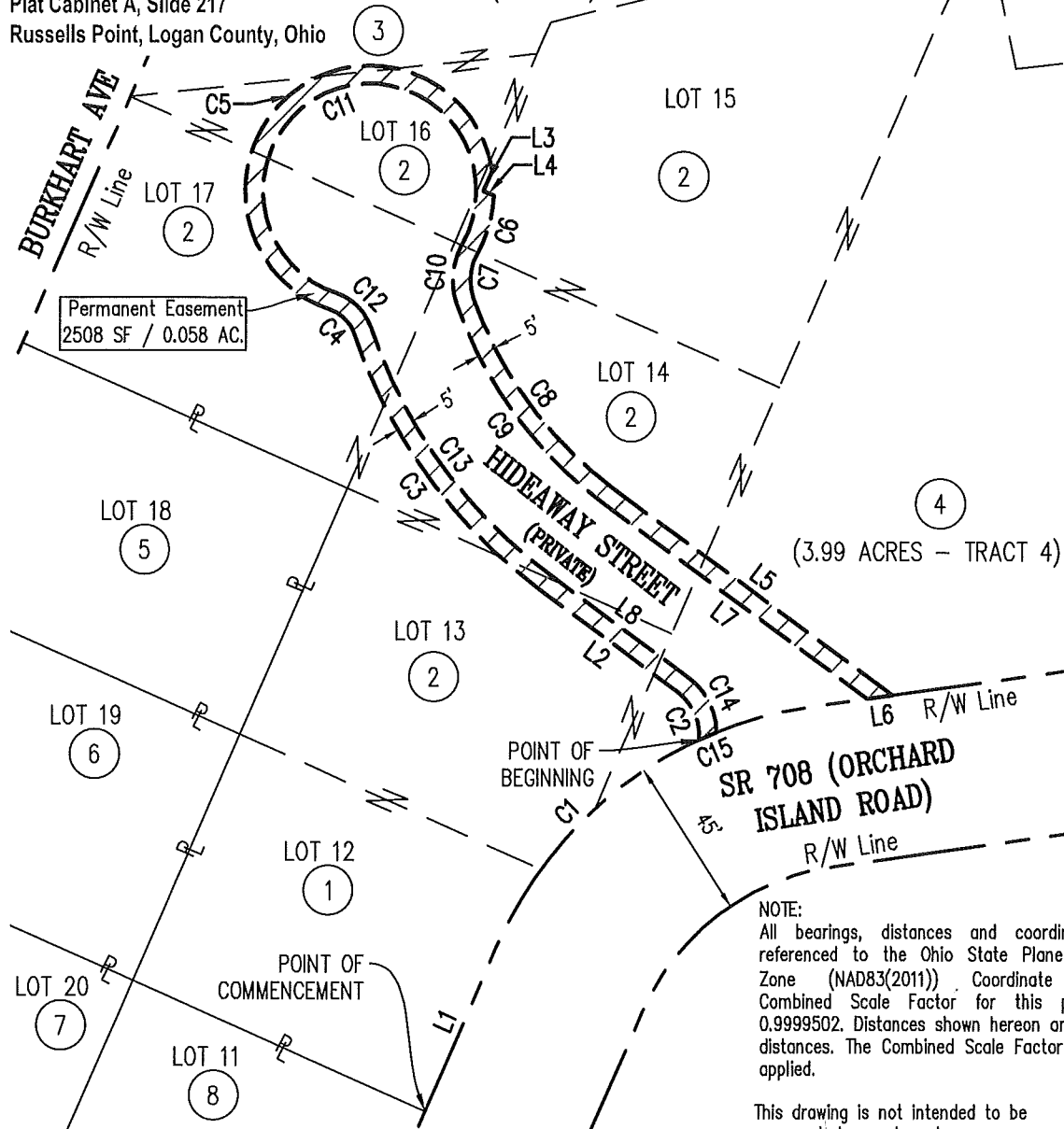


Scale 1"=50'



Permanent Easement
Pt. Sec. 36-T6-R8E &
Pt. Lots 13-17
F.A. Burkhardt's Park Heights Subdivision
Plat Cabinet A, Slide 217
Russells Point, Logan County, Ohio

LOT 46-148
INDIAN LAKE RESERVOIR LANDS
PLAT CABINET A, SLIDE 437
(TRACT 3)

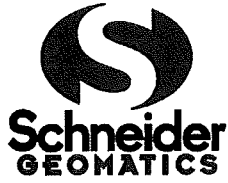


NOTE:
All bearings, distances and coordinates are referenced to the Ohio State Plane - North Zone (NAD83(2011)) Coordinate System. Combined Scale Factor for this project is 0.9999502. Distances shown hereon are GROUND distances. The Combined Scale Factor has been applied.

This drawing is not intended to be represented as a boundary survey.

Job No. 13542
File No. T:\13k\13542\CAD\13542.dwg
Date 09/08/21 MKK/JDW

INDEXED ON MAP
579



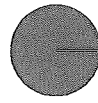
a division of
Schneider Engineering Corp

Permanent Easement
Pt. Sec. 36-T6-R8E &
Pt. Lots 13-17

F.A. Burkhardt's Park Heights Subdivision
Plat Cabinet A, Slide 217
Russells Point, Logan County, Ohio

1012 Harrison Ave.
Suite 3
Harrison, OH 45030
317-826-7100
317-826-7110 FAX

Exhibit "B"



CenterPoint
Energy

PARCEL TABLE

1	52-032-10-04-035-000	Jack R. Beatley, Trustee u/a dated May 5, 1993 with Jack R. Beatley, Grantor (1/2 Interest) Quit-Claim Deed OR 189, PG 417 (Tracts No. 3, 4 & 7) Dated: May 5, 1993
2	52-032-10-04-004-000	
3	52-032-10-04-003-002	
4	52-032-10-04-003-003	Jack R. Beatley, Trustee U/A dated February 19, 1993 with Patricia Joanne Beatley, Grantor (1/2 Interest) Quit-Claim Deed OR 183, PG 892 (Tracts No. 3, 4 & 7) Dated: February 19, 1993
5	52-032-10-04-005-000	Christy F. Vaughan and Kenneth D. Vaughan OR 1243, Page 780
6	52-032-10-04-006-000	Ryan Lillard and Tia M. Lillard OR 741, Page 356
7	52-032-10-04-007-000	Jack K. Beatley, Trustee OR 1078, Page 493
8	52-032-10-04-034-000	Lisa Wallace OR 1118, Page 469

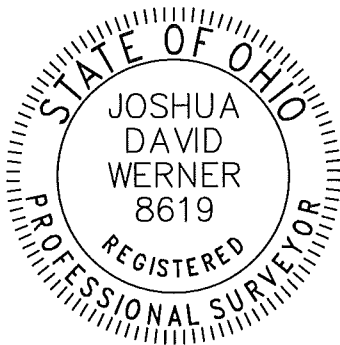
Line #	Direction	Distance
L1	N23° 38' 53"E	50.03'
L2	N53° 44' 04"W	48.24'
L3	S23° 28' 09"W	6.22'
L4	S66° 31' 51"E	3.17'
L5	S53° 44' 04"E	97.71'
L6	S82° 01' 23"W	7.17'
L7	N53° 44' 04"W	92.58'
L8	S53° 44' 04"E	48.24'

Curve #	Length	Radius	Delta	Chord Direction	Chord Length
C1	82.99'	113.91'	41° 44' 31"	N44° 31' 09"E	81.17'
C2	15.47'	15.00'	59° 06' 33"	N24° 10' 47"W	14.80'
C3	90.01'	147.50'	34° 57' 52"	N36° 15' 08"W	88.62'
C4	9.30'	10.00'	53° 18' 13"	N45° 25' 18"W	8.97'
C5	148.31'	35.00'	242° 47' 15"	N49° 19' 13"E	59.75'
C6	16.85'	35.00'	27° 35' 16"	S15° 57' 18"W	16.69'
C7	12.91'	15.00'	49° 19' 40"	S5° 05' 06"W	12.52'
C8	67.06'	112.50'	34° 09' 19"	S36° 39' 24"E	66.08'
C9	70.04'	117.50'	34° 09' 19"	N36° 39' 24"W	69.01'
C10	17.22'	20.00'	49° 19' 40"	N5° 05' 06"E	16.69'
C11	147.56'	30.00'	281° 49' 20"	S68° 50' 16"W	37.83'
C12	13.95'	15.00'	53° 18' 13"	S45° 25' 18"E	13.46'
C13	86.96'	142.50'	34° 57' 52"	S36° 15' 08"E	85.62'
C14	17.99'	20.00'	51° 32' 55"	S27° 57' 36"E	17.39'
C15	5.50'	113.91'	2° 45' 54"	S66° 46' 22"W	5.50'

CERTIFICATION

I, Joshua David Werner, certify that this exhibit was prepared under my supervision and is not intended to be a boundary survey of the property shown hereon.
This 8th day of September, 2021

Joshua David Werner
Professional Surveyor No. 8619



Job No. 13542
File No. T: \13k\13542\CAD\13542.dwg
Date 09/08/21 MKK/JDW

INDEXED ON MAP
579