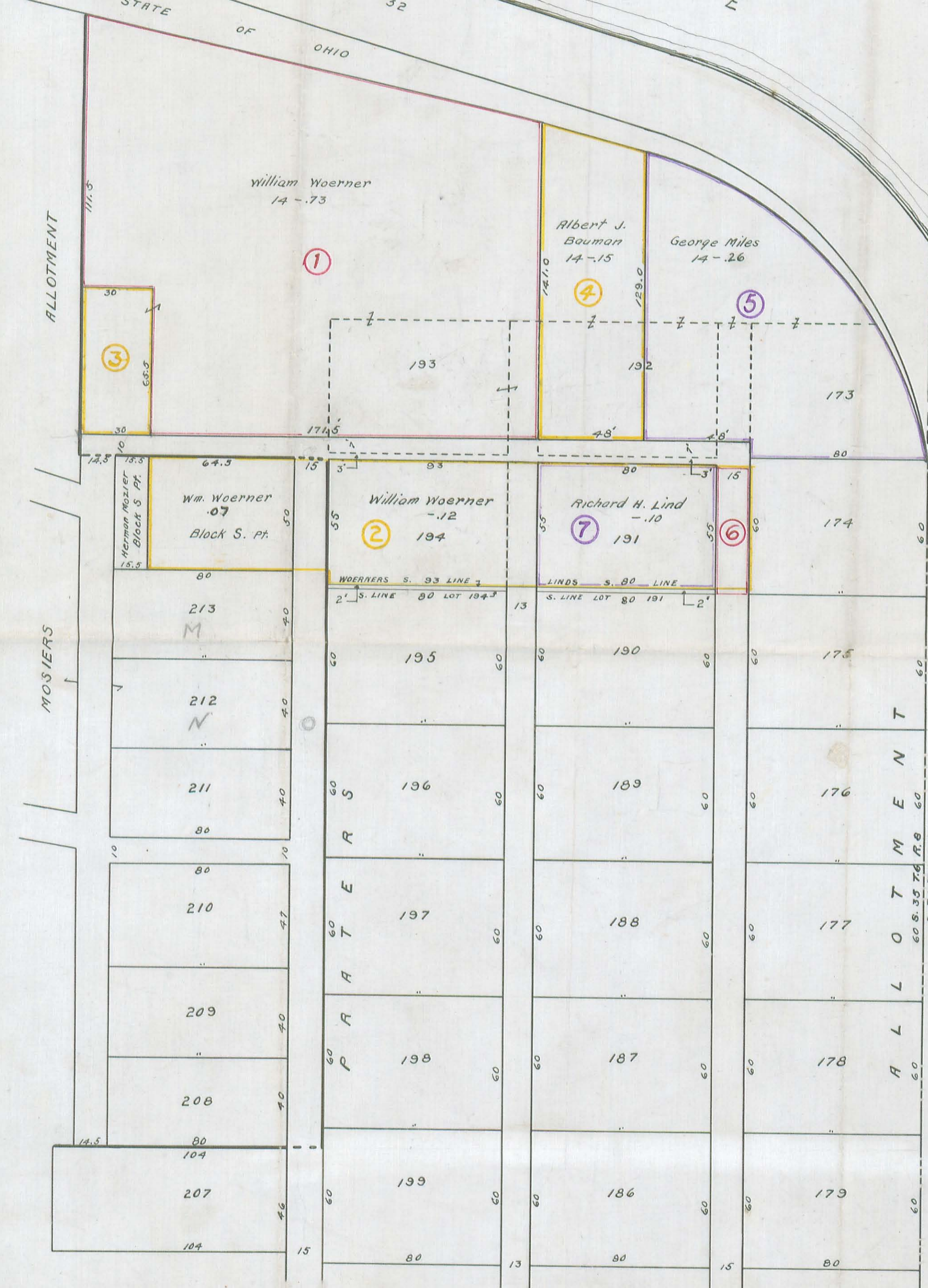


I N D I A N L A K E
 ROUTE 32
 STATE OF OHIO



PLAT OF PROPOSED VACATION OF LOTS
 173, 191, 192, 193 AND 194 PRATERS
 ALLOTMENT RUSSELLS POINT, OHIO.
 SCALE 1 INCH = 40 FEET. OCTOBER, 1932.
 OFFICE OF COUNTY SANITARY ENGINEER.

1641 IP
 INDEXED ON MAP



Al. Baumann Survey - Lots 209-210
 Rushells Point - Mosiers Allotment.
 Washington Twp. - Logan Co.

July 12 1945
 Grover Wilgus
 F.F. Wright

See City Print (Praters Vacation of lots) 66-35
 " County " (" " ") 1641
 " FFW File (" " ") 95
 See City Print (Mosiers Allotment) 66-33
 " County " (" " ") J-28
 " FFW File (" " ") 96

A 2"x2" Hub Found
 B " " "
 C " " "
 D " " "
 E 2"x2" Hub Placed
 F " " "
 G " " "
 H " " "
 I " " "
 J " " "
 K Noted Hub and 1/2" Square Iron
 1"11" from E 4 1/4" North of Line EJ.

(This Map No Scale)



FFW
 96

INDEXED G. MAP
 1641 2P