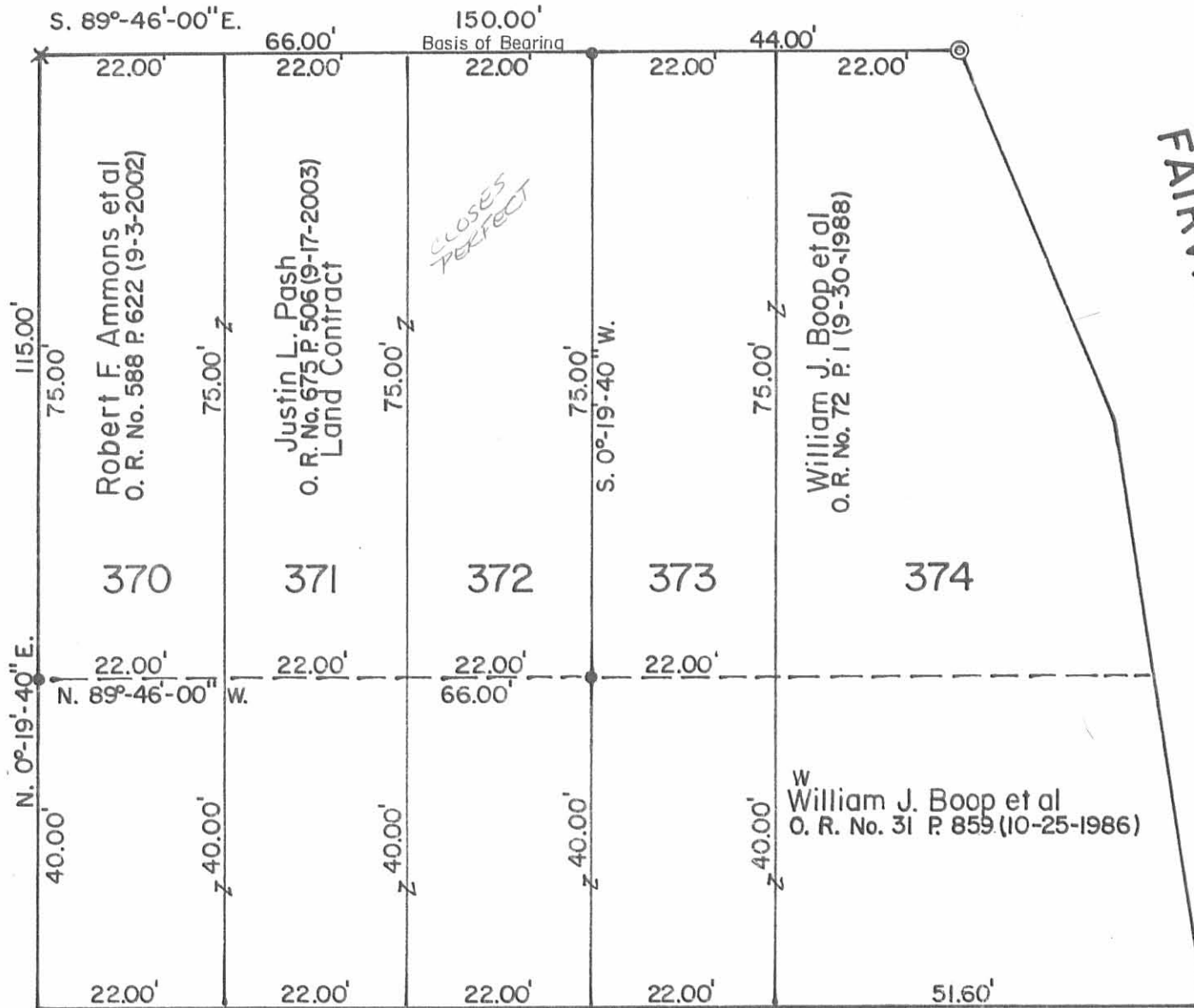


3-18-04 DMJ OK

CENTER OR SUNNYSIDE STREET - 35'

UNNAMED STREET - 40'

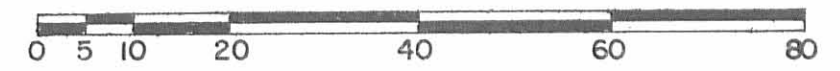
369



FAIRVIEW AVENUE

15' ALLEY

GRAND AVE. - 40'



Scale: 1" = 20'

SYMBOLS:

- - 1" Iron Pipe Fd.
- ⊙ - 2" Iron Pipe Fd.
- × - Chiseled "I" on Concrete Wall Set.
- - 5/8" x 30' Rebars Set. (Capped).

REFERENCE:
 SPRING GROVE ALLOTMENT.
 Plat Cab. A, Slide 134 (5-5-1911).

JUSTIN PASH SURVEY-Part of Lots No. 370-371-372,
 Village of Russells Point, Washington Township,
 Logan County, Ohio.

SCALE: 1" = 20'	APPROVED BY:	DRAWN BY DEG
DATE: 3-13-2004		REVISED

Daniel E. Gilbert
 Daniel E. Gilbert, P.S.
 Reg. Sur. No. 5402

DRAWING NUMBER
 2004-012



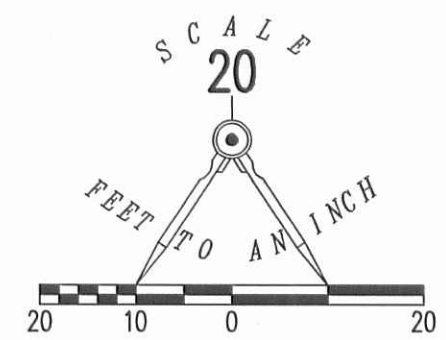
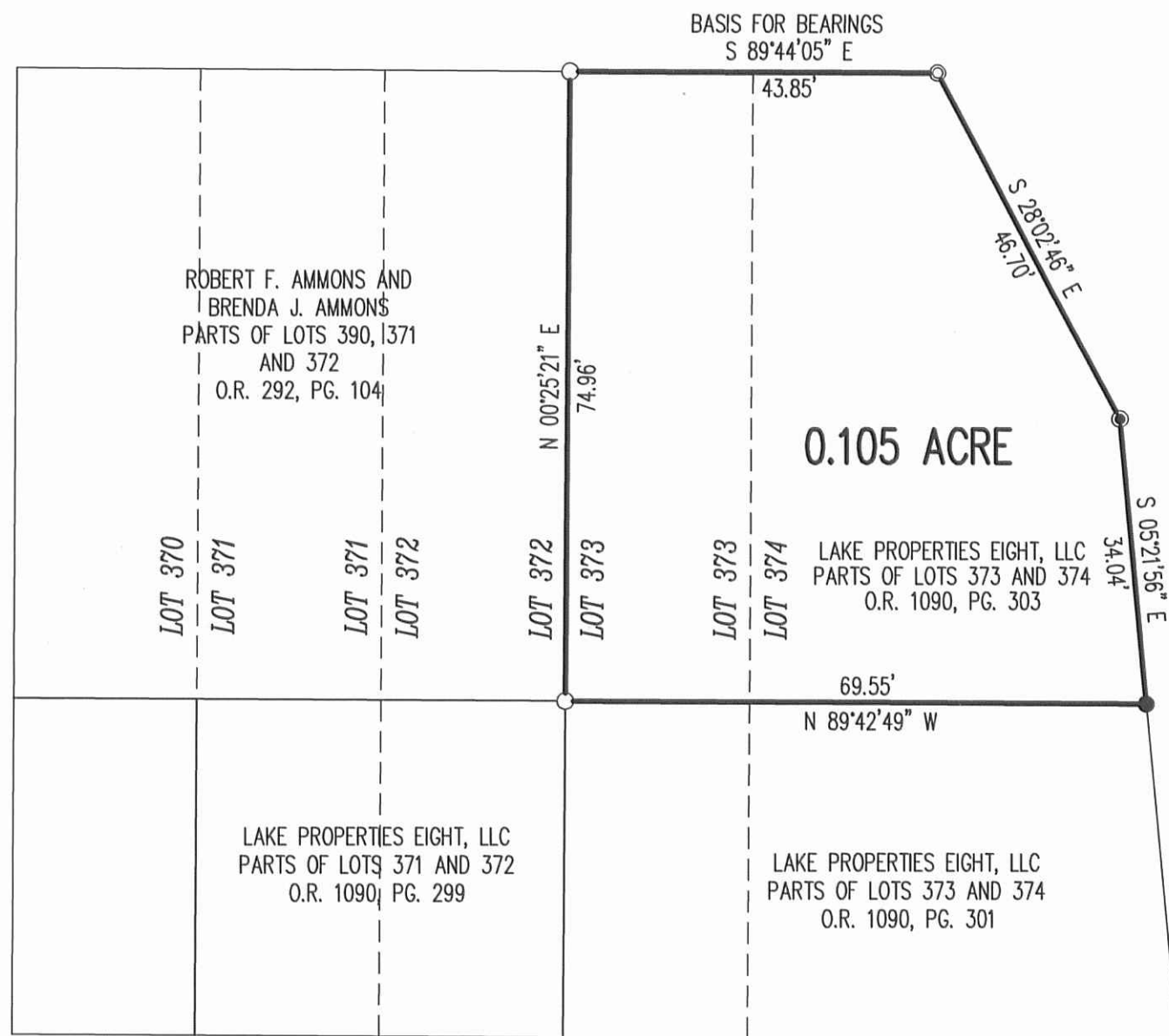
INDEXED ON MAP
 4713 ZP

✓ **APPROVED** 4-9-13

SUNNY SIDE AVENUE (35 FEET WIDE)

NAVAHO STREET (40 FEET WIDE)

FAIRVIEW AVENUE



- LEGEND
- 5/8 INCH IRON ROD SET WITH PLASTIC I.D. CAP STAMPED "LSM7437"
 - 5/8 INCH IRON ROD FOUND
 - ⊙ MAG NAIL SET
 - ⊙ 2 INCH IRON PIPE FOUND

RETRACEMENT SURVEY OF THE
LAKE PROPERTIES EIGHT, LLC
PARTS OF LOTS 373 AND 374
OFFICIAL RECORD 1090, PAGE 303
SPRING GROVE ALLOTMENT
PLAT CABINET A, SLIDE 133
VILLAGE OF RUSSELLS POINT
WASHINGTON TOWNSHIP
LOGAN COUNTY, OHIO

SURVEYED BY:
William K. Bruce
WILLIAM K. BRUCE
PROFESSIONAL SURVEYOR 7437
APRIL 4, 2013



COPYRIGHT 2013 BY:
LEE SURVEYING & MAPPING CO., INC.
117 North Madriver Street
BELLEFONTAINE, OHIO 43311
(937) 593-7335
WWW.LSMINC.US
surveys@lsminc.us

2 WORKING DAYS
BEFORE YOU DIG
CALL TOLL FREE **800-362-2764**
OHIO UTILITIES PROTECTION SERVICE

INDEXED ON MAP
4713 3P