

REC'D 7-21-95 8M OK

REFERENCES

LOGAN COUNTY ENGINEER'S FILES:
CAIN'S ADDITION TO RUSSELL'S POINT
PLAT CABINET A. SLIDE 151
R-5794
R-6568
R-3255

CHASE AVENUE (35')

LOT 115

S 65°53'51"E
95.00'

LOT 116

N 24°00'49"E
50.00'

95.00'
N 65°56'08"W

LOT 117

49.94'
S 24°00'49"W

LOT 112

150.00'

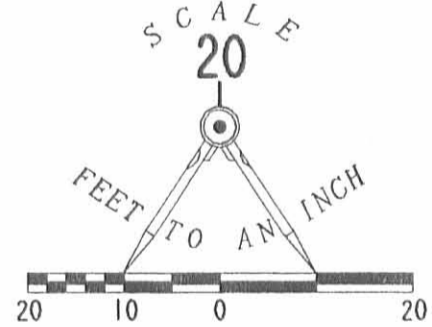
LOT 118

LOT 111

LOT 119

S 66°03'00"E (BASIS FOR BEARINGS)

MANSFIELD STREET (20')



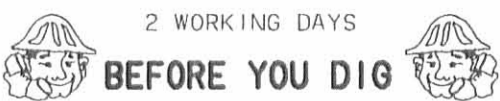
ORIGINAL STAMP IN GREEN

SURVEYED BY:

Jeffrey L. Lee
JEFFREY L. LEE
PROFESSIONAL SURVEYOR 6359
JULY 18, 1995

RETRACEMENT SURVEY OF THE
JOYCE NEY LOT NO. 116
OFFICIAL RECORD 225, PAGE 986 IN THE
CAIN'S ADDITION TO RUSSELL'S POINT
PLAT CABINET A. SLIDE 151
WASHINGTON TOWNSHIP
LOGAN COUNTY, OHIO

INDEXED ON MAP
5794 1P



2 WORKING DAYS

BEFORE YOU DIG

CALL TOLL FREE 800-362-2764

COPYRIGHT 1995 BY:
LEE SURVEYING & MAPPING CO.
143 East Columbus Avenue
BELLEFONTAINE, OHIO 43311
(513) 593-7335

D 263 JOYCENEY

L-1122-3



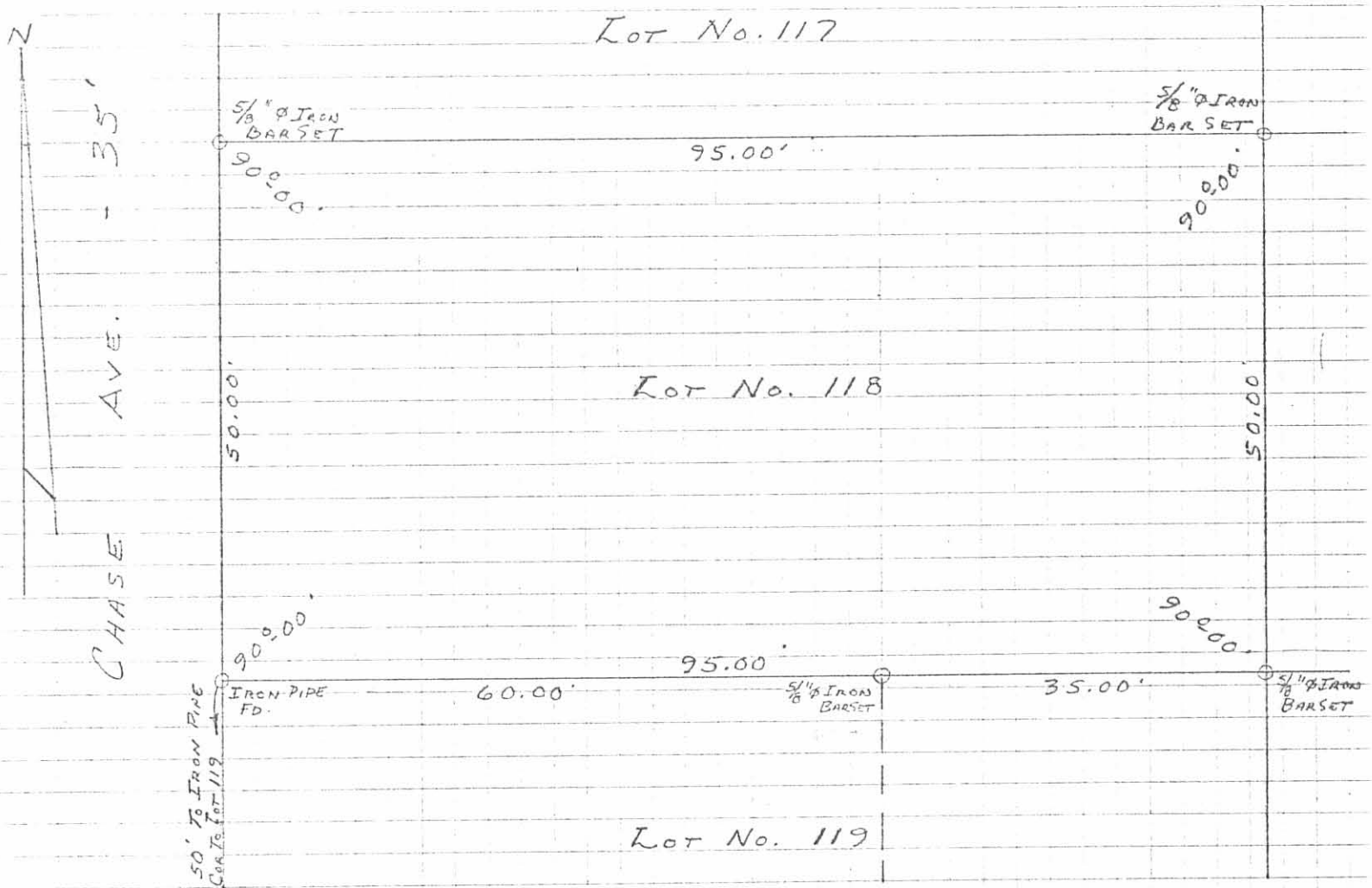
SURVEY OF
 LOT No. 109
 RUSSELLS POINT, OHIO
 JUNE 2, 1979
 SCALE 1" = 30'

5794 2P

INDEXED ON MAP

REF:
 CAIN PARK
 PLAT CAR. A, SLIDE 152

DAN L. DOOSON
 REG. SURVEYOR 4270
 BELLEFONTAINE, OHIO



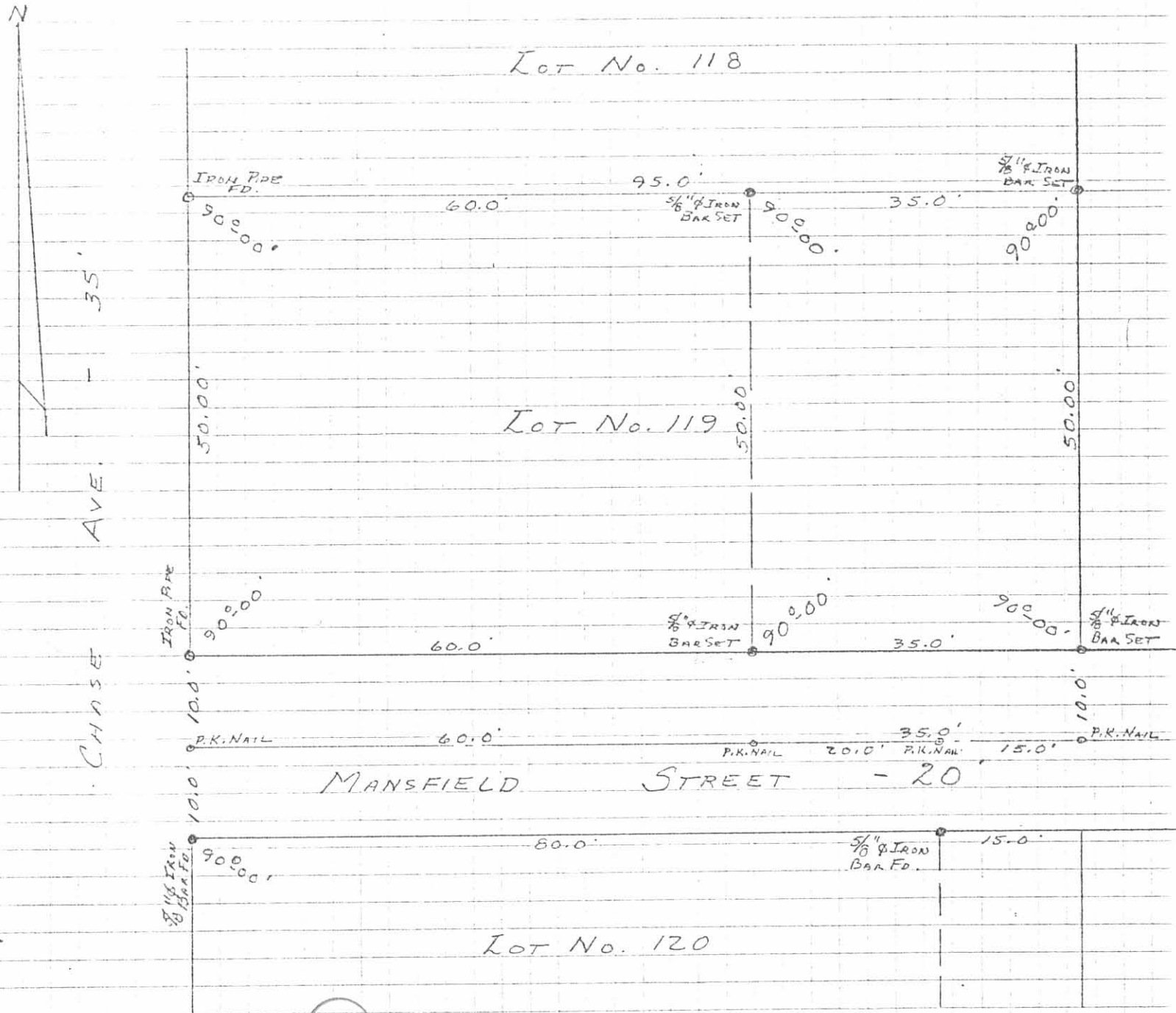
5794 3P

INDEXED ON MAP

SURVEYED AND PLATTED BY:
 DANIEL E. GILBERT, P.S.
 REG. SUR. NO. 5402
 1041 N. MAIN ST.
 BELLEFONTAINE, OHIO 43311

SURVEY OF Lot No. 118
 VILLAGE OF RUSSELLS POINT
 SECTION 36 T.6S. R.8E.
 WASHINGTON TOWNSHIP
 LOGAN COUNTY, OHIO
 JULY 19, 1975

SCALE: 1" = 15'



(5794) 4P

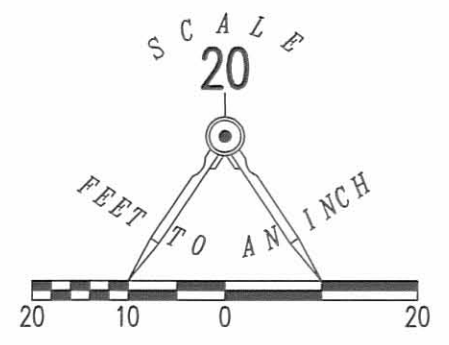
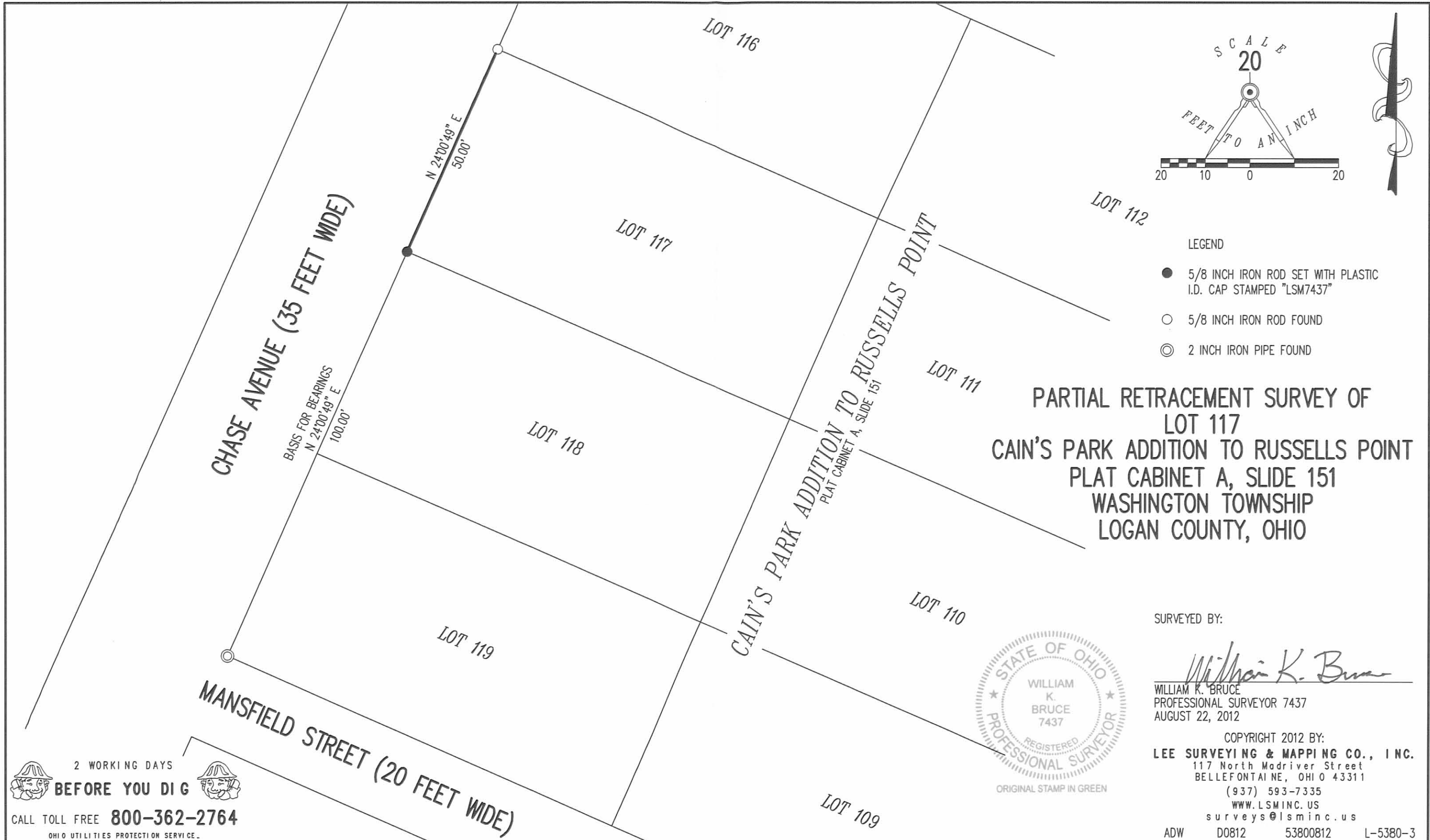
INDEXED ON MAP

SURVEY OF LOT No. 119
 VILLAGE OF RUSSELLS POINT
 SECTION 36 T.6S. R.8E,
 WASHINGTON TOWNSHIP
 LOGAN COUNTY, OHIO
 JULY 19, 1975

SURVEYED AND PLATED BY:
 DANIEL E. GILBERT, P.S.
 REG. SUR. No. 5402
 1041 N. MAIN ST.
 BELLEFONTAINE, OHIO 43311

SCALE: 1" = 15'

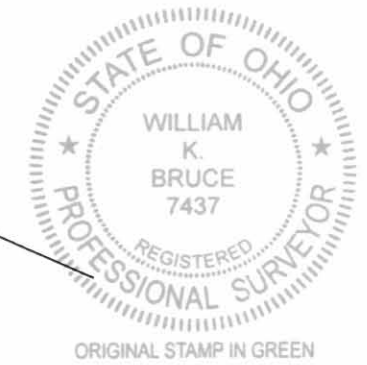
REV'D 8-27-12 smyak



- LEGEND
- 5/8 INCH IRON ROD SET WITH PLASTIC I.D. CAP STAMPED "LSM7437"
 - 5/8 INCH IRON ROD FOUND
 - ⊙ 2 INCH IRON PIPE FOUND

**PARTIAL RETRACEMENT SURVEY OF
LOT 117
CAIN'S PARK ADDITION TO RUSSELLS POINT
PLAT CABINET A, SLIDE 151
WASHINGTON TOWNSHIP
LOGAN COUNTY, OHIO**

SURVEYED BY:
William K. Bruce



WILLIAM K. BRUCE
PROFESSIONAL SURVEYOR 7437
AUGUST 22, 2012

COPYRIGHT 2012 BY:
LEE SURVEYING & MAPPING CO., INC.
117 North Madriver Street
BELLEFONTAINE, OHIO 43311
(937) 593-7335
WWW.LSMINC.US
surveys@lsminc.us

ADW D0812 53800812 L-5380-3

2 WORKING DAYS
BEFORE YOU DIG
CALL TOLL FREE **800-362-2764**
OHIO UTILITIES PROTECTION SERVICE.

INDEXED ON MAP
5794 SP