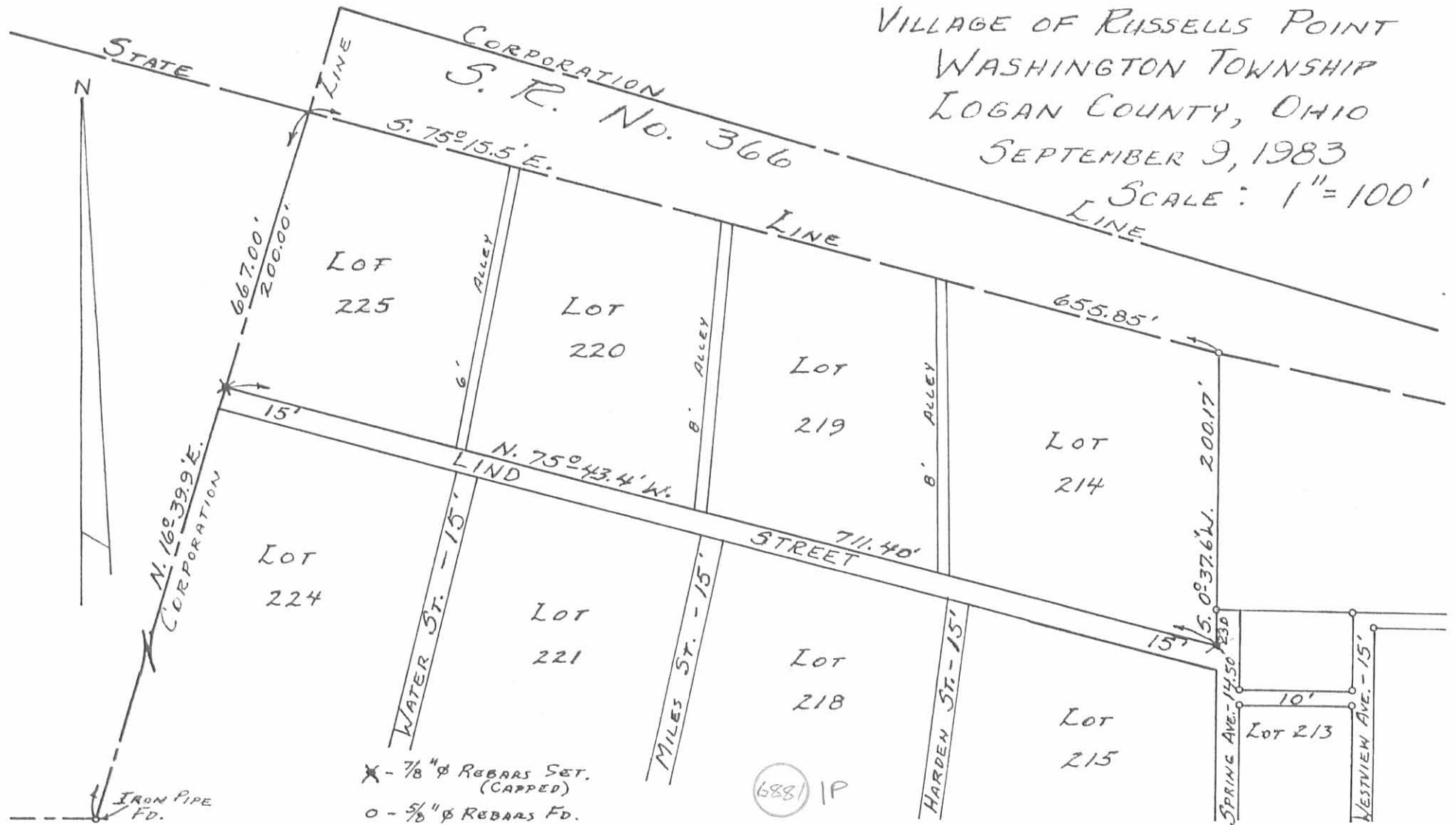


SURVEY OF NORTH LINE
OF
LIND STREET
SECTION 35 T.6S. R.8E.
VILLAGE OF RUSSELLS POINT
WASHINGTON TOWNSHIP
LOGAN COUNTY, OHIO
SEPTEMBER 9, 1983
SCALE: 1" = 100'



SURVEYED AND PLATTED BY:
DANIEL E. GILBERT, P.S.
REG. SUR. No. 5402

INDEXED ON MAP

CHESTER R. KURTZ
LOGAN COUNTY ENGINEER



William Coyer
Page 2 of 4
March 07, 2023

Alley Vacation LEGAL DESCRIPTION

Being a part of the Mosier Allotment (P.C. A, Slide 197) and a part of Section 35, Town 6, Range 8, Village of Russells Point, Washington Township, Logan County, Ohio, more particularly described as follows:

Commencing at an existing #5 Rebar at the NW corner of Lot #225 of said Mosier Allotment in the name of William H. & Elisabeth M. Coyer (O.R. 1331, Pg. 746); thence S 15°-23'-13" W with the W line of said Lot #225 and the E line of a 19.433 acre tract in the name of Southshore, LLC (O.R. 1211, Pg. 705, Parcel II), 199.97' to a #5 Rebar set at the SW corner of said Lot #225 and being the POINT OF BEGINNING; thence the following courses:

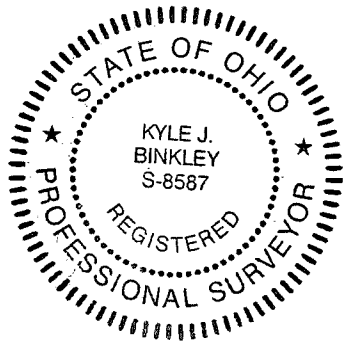
1. S 75°-56'-20" E with the S line of said Lot #225, 163.93' to a point at the SE corner of said Lot #225;
2. N 09°-55'-11" E with the E line of said Lot #225, 198.83' to a point at the NE corner of said Lot #225 and the S line of State Route 366;
3. S 75°-18'-20" E with the N line of said Mosier Allotment and the S line of State Route 366, 6.02' to a point at the NW corner of Lot #220 in the name of Michael D. Miller (D.V. 405, Pg. 519), passing a #5 Rebar set at the centerline of a 6' Alley at 3.01';
4. S 09°-55'-11" W with the W line of said Lot #220, 198.77' to a point at the SW corner of said Lot #220;
5. S 75°-56'-20" E with the S line of said Lot #220, 163.93' to a point at the SE corner of said Lot #220;
6. N 04°-50'-36" E with the E line of said Lot #220, 199.20' to a #5 Rebar set at the NE corner of said Lot #220 and the S line of State Route 366;
7. S 75°-18'-20" E with the N line of said Mosier Allotment and the S line of State Route 366, 8.12' to a #5 Rebar set at the NW corner of Lot #219 of said Mosier Allotment in the name of Michael D. Miller (D.V. 403, Pg. 867);
8. S 04°-50'-36" W with the W line of said Lot #219, 199.11' to a point at the SW corner of said Lot #219;
9. S 75°-56'-20" E with the S line of said Lot #219, 165.12' to a point at the SE corner of said Lot #219;
10. N 00°-30'-11" W with the E line of said Lot #219, 201.39' to a #5 Rebar set at the NE corner of said Lot #219 and the S line of State Route 366;
11. S 75°-18'-20" E with the N line of said Mosier Allotment and the S line of State Route 366, 8.29' to a #5 Rebar set at the NW corner of Lot #214 of said Mosier Allotment in the name of Southshore, LLC (O.R. 1211, Pg. 705, Parcel III);

12. S 00°-30'-11" E with the W line of said Lot #214 and the extension thereof, 216.79' to a point on the N line of Lot #218 of said Mosier Allotment in the name of Southshore, LLC (O.R. 1211, Pg. 705, Parcel III), passing a point at the SW corner of said Lot #214 at 201.30';
13. N 75°-56'-20" W with the N line of said Lot #218, 159.27' to a point at the NW corner of said Lot #218;
14. S 12°-17'-40" W with the W line of said Lot #218 and the extension thereof, 188.86' to a point at the NW corner of Lot #217 of said Mosier Allotment in the name of Mark J. Fleming (O.R. 1090, Pg. 287), passing a point at the SW corner of said Lot #218 at 173.80';
15. N 82°-48'-13" W with the N line of Lot #222 of said Mosier Allotment in the name of Southshore, LLC (O.R. 1211, Pg. 705, Parcel III) and the extension thereof, 178.74' to a point at the NW corner of said Lot #222, passing the NE corner of said Lot #222 at 15.06';
16. N 13°-06'-05" E, 15.08' to a point at the SW corner of Lot #221 of said Mosier Allotment in the name of Michael D. Miller (D.V. 405, Pg. 519);
17. Continuing N 13°-06'-05" E with the W line of said Lot #221, 195.08' to a point at the NW corner of said Lot #221;
18. S 75°-56'-20" E with the N line of said Lot #221, 160.15' to a point at the NE corner of said Lot #221;
19. S 12°-17'-40" W with the E line of said Lot #221, 175.60' to a point at the SE corner of said Lot #221;
20. N 82°-48'-13" W with the S line of said Lot #221, 163.47' to a point at the SW corner of said Lot #221;
21. S 13°-06'-05" W, 15.08' to a point at the NW corner of said Lot #222;
22. Continuing S 13°-06'-05" W with the W line of said Lot #222, 195.52' to a point at the SW corner of said Lot #222 and the N line of an 8.195 acre tract in the name of Southshore, LLC (O.R. 1211, Pg. 705, Parcel I);
23. N 88°-47'-26" W with the S line of said Mosier Allotment and the N line of said 8.195 acre tract, 15.33' to a point at the SE corner of Lot #223 of said Mosier Allotment in the name of William H. & Elisabeth M. Coyer (O.R. 1331, Pg. 746), passing a #5 Rebar set at the centerline of a 15' Alley at 7.67';
24. N 13°-06'-05" E with the E line of said Lot #223, 197.13' to a point at the NE corner of said Lot #223;
25. N 82°-48'-13" W with the N line of said Lot #223, 180.42' to a #5 Rebar set at the NW corner of said Lot #223 and the E line of a 19.433 acre tract in the name of Southshore, LLC (O.R. 1211, Pg. 705, Parcel II);

26. N 15°-23'-13" E with the W line of said Mosier Allotment and the E line of said 19.433 acre tract, 15.15' to a #5 Rebar set at the SW corner of Lot #224 of said Mosier Allotment in the name of William H. & Elisabeth M. Coyer (O.R. 1331, Pg. 746);
27. S 82°-48'-13" E with the S line of said Lot #224, 179.81' to a point at the SE corner of said Lot #224;
28. N 13°-06'-05" E with the E line of said Lot #224, 196.89' to a point at the NE corner of said Lot #224;
29. N 75°-56'-20" W with the N line of said Lot #224, 170.17' to a #5 Rebar set at the NW corner of said Lot #224 and the E line of said 19.433 acre tract;
30. N 15°-23'-13" E with the W line of said Mosier Allotment and the E line of said 19.433 acre tract, 15.00' to the POINT OF BEGINNING.

The above described parcel contains 0.603 acres, more or less, subject to all legal highways and easements of record.

The system of bearings for this legal description is based on the Ohio State Plane-North Coordinate System NAD83 (2011). This legal description and accompanying plat represent an actual boundary survey completed under the direct supervision of Kyle J. Binkley, P.S. #8587 on March 07, 2023. All markers called for above are in place.



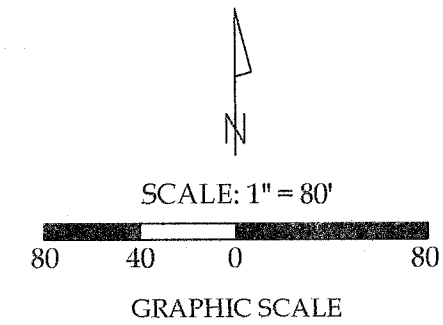
A handwritten signature in black ink, appearing to read "KJ Binkley", positioned to the right of the professional seal.

INDEXED ON MAP
6881

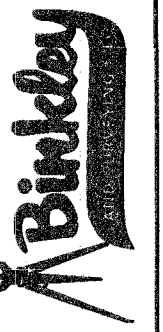
APPROVED

Alley Vacation Plat

Alley vacation of Mosier Allotment (P.C. A, Slide 197) and being a part of Section 35, Town 6, Range 8, Village of Russells Point, Washington Township, Logan County, Ohio.



9215-022 (619)
56972 Ohio 10/20/2019
121 W. High Street
Cincinnati, Ohio 45219

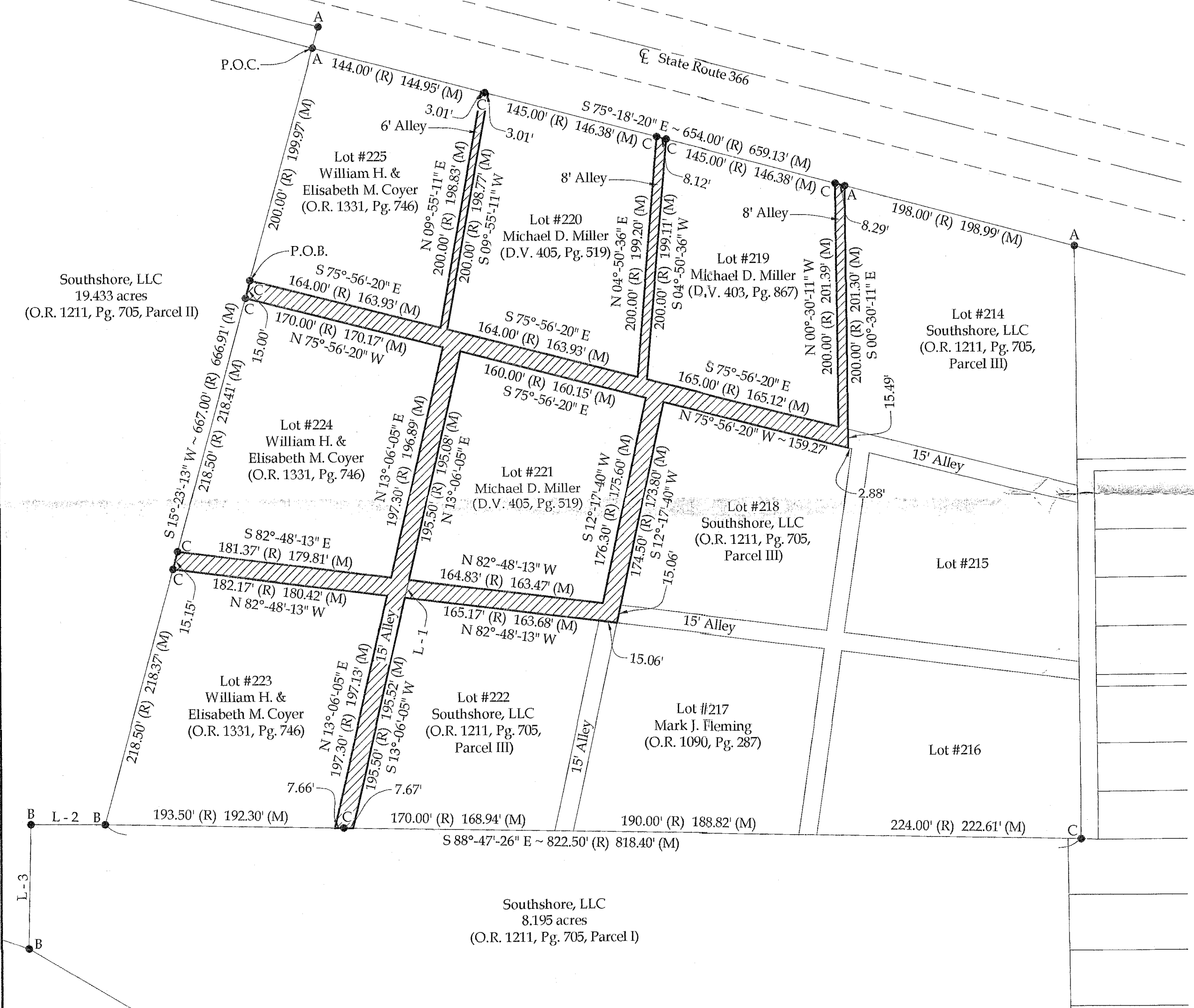


Prepared By:

Alley Vacation Plat

William Coyer
State Route 366
Russells Point, OH 43348

Surveyed By: T.J.S./M.A.B.
Date: 03/07/2023
Checked By: K.J.B.
Drawn By: K.J.B.



- Legend**
- A = Existing #5 Rebar
 - B = Existing 3/4" Iron Pipe
 - C = Set #5 Rebar

- Line Data**
- L - 1 = N 13°-06'-05" E ~ 15.08'
 - L - 2 = S 89°-35'-32" E ~ 62.31' (R) 62.10' (M)
 - L - 3 = N 01°-08'-44" E ~ 103.55' (R) 103.48' (M)

- Proposed Alley Vacation (0.603 acres)

Surveys Referenced

- Lee Surveying & Mapping Dwg. #L-5232-3 (2011) - Logan County Index No. 1977
- Daniel E. Gilbert, P.S. - Chester R. Kurtz Survey (1983) - Logan County Index No. 6881
- Lee Surveying & Mapping Dwg. #L-4536-2 (2007) - Logan County Index No. 1574
- Lee Surveying & Mapping Dwg. #L-4452-2 (2007) - Logan County Index No. 3648

Note: All distances called for on this plat are measured distances unless otherwise noted.

BASIS OF BEARINGS: The system of bearings for this plat and legal description is based on the Ohio State Plane - North Coordinate System NAD 83 (2011).



This plat and the accompanying legal descriptions represent an actual boundary survey completed under my direct supervision on March 7, 2023.

Kyle J. Binkley, P.S. #8587

INDEXED ON MAP
6831