

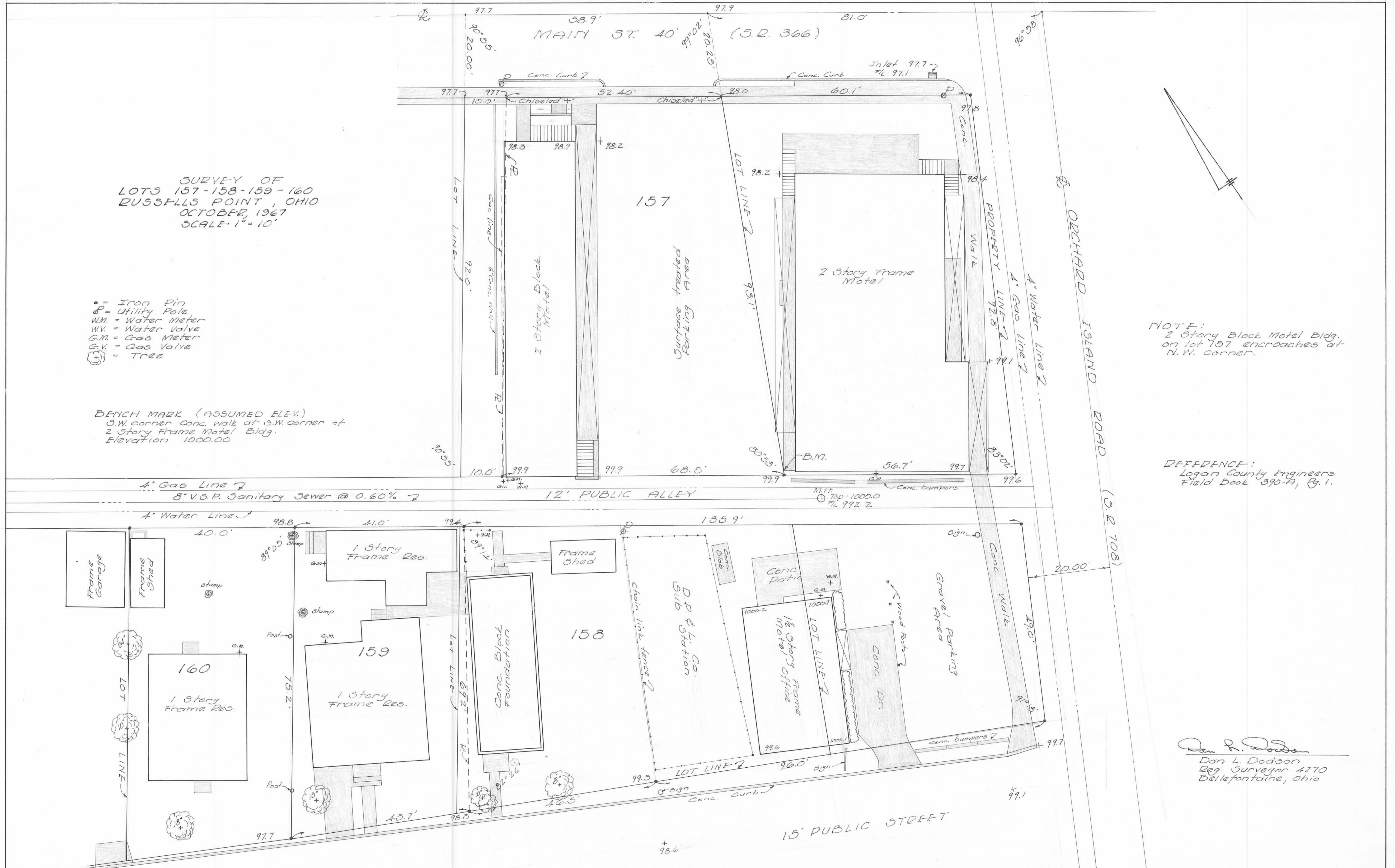
SURVEY OF
 LOTS 157-158-159-160
 RUSSELLS POINT, OHIO
 OCTOBER, 1967
 SCALE-1"=10'

- = Iron Pin
- ⊕ = Utility Pole
- WM. = Water Meter
- WV. = Water Valve
- G.M. = Gas Meter
- G.V. = Gas Valve
- ⊕ = Tree

BENCH MARK (ASSUMED ELEV.)
 S.W. corner conc. walk at S.W. corner of
 2 Story Frame Metal Bldg.
 Elevation 1000.00

NOTE:
 2 Story Block Metal Bldg.
 on lot 157 encroaches at
 N.W. corner.

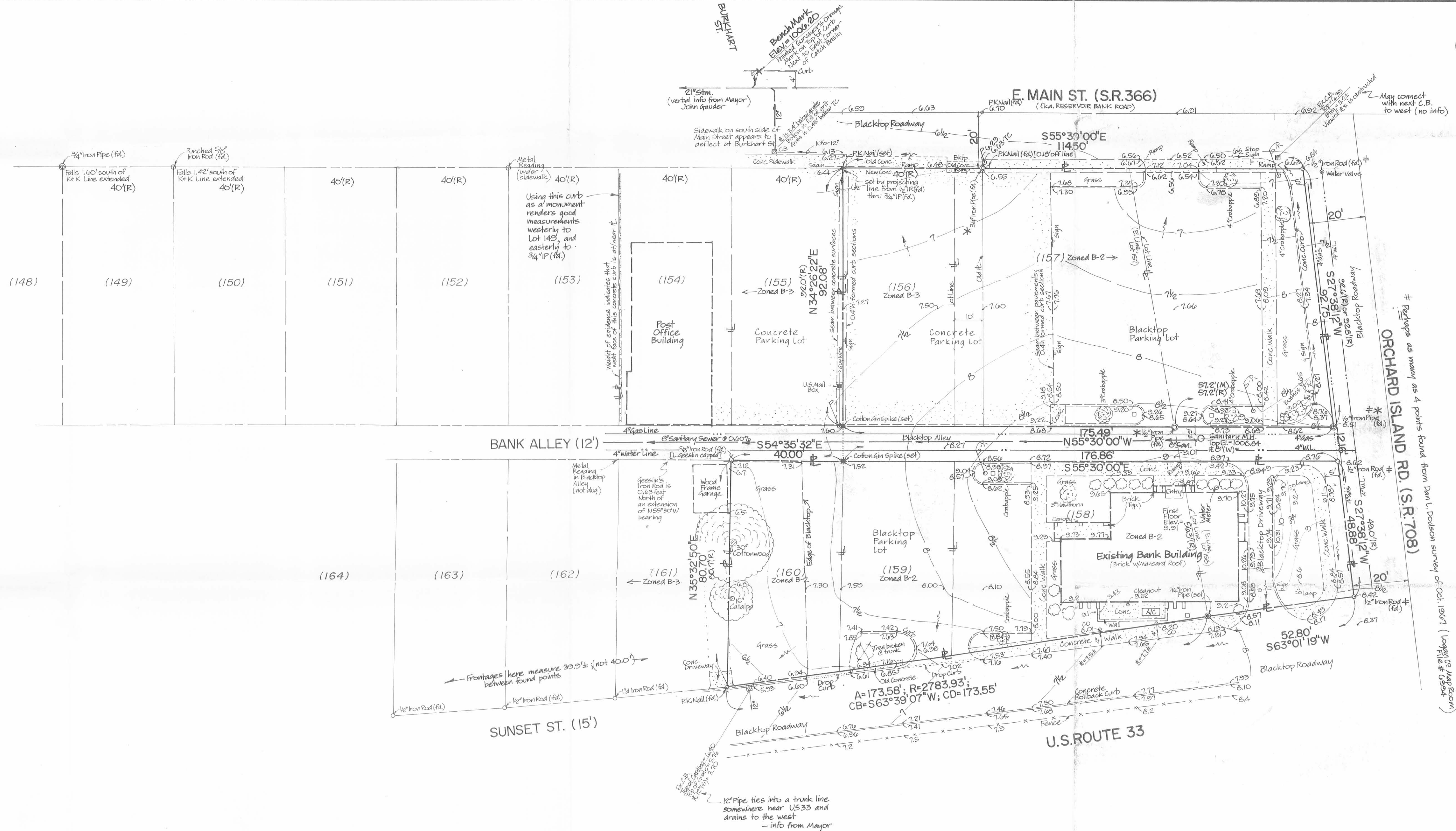
REFERENCE:
 Logan County Engineers
 Field Book 390-A, Pg. 1.



Dan L. Dodson
 Dan L. Dodson
 Reg. Surveyor 4270
 Bellefontaine, Ohio



1"=20'



Using this curb as a monument renders good measurements westerly to Lot 149 and easterly to 3/4" IP (H).

Frontages here measure 30.5'± (not 40.0')

12" Pipe, ties into a trunk line somewhere near US 33 and drains to the west - info from Mayor

Perhaps as many as 4 points found from Ben L. Dodson survey of Oct. 1897 (Logan 12 Map Room File # 6964)

ELEVATION NOTES

No government agency bench mark was found in the immediate vicinity of this site. An assumed origin of elevation work for this project was made at the top of the concrete curb contiguous with the iron casting of the catch basin at the northeast corner of E. Main St. and Burkhardt Street. Because this older curb section is close to the location of an original 1959 USGS Reference Mark, that elevation was assumed for the location selected by K&K as an origin.

7.2 — For elevations shown thusly, add 1000 feet to convert to best reworking of NGVD 29 (Contour interval is one-half foot) thru larger paved areas (Contours may not be shown in areas adjacent to building for purposes of clarity)

ZONING — Most of this property is zoned B-2 (Local Business), except for Lot 156, which is B-3 (Central Business)

- LEGEND**
- Sewer Line
 - Water Line
 - Gas Line
 - Fence
 - Concrete
 - Blacktop
 - Tree
 - Bush
 - Utility Pole
 - Light Pole
 - Manhole
 - Hydrant
 - Catch Basin
 - Cleanout
 - Cotton GIN Spike
 - 3/4" Iron Pipe
 - P.K. Nail
 - Typical K&K Property Corner Markers set
 - (R) = Record Dimension (from deed, floor plat, or map)
 - Logan 12 (Map Room File # 2416)
 - * — Perhaps as many as 3 IP's found from F.F. Wright survey of July 1948

	KOHLI AND KALHER ASSOCIATES, INC. CONSULTING ENGINEERS AND SURVEYORS LIMA, OHIO			
	Boundary & Topographic Survey For: American Bank Site Lots 156-160, plus lands adjacent on east Village of Russells Point Allen County, Ohio			
SCALE 1"=20'	DATE 8-2-93	DRAWN BY MGB	CHECKED BY	DRAWING NO. L-1009

PRINT ISSUED
6-10-93

KOHLI & KALHER, ASSOC., INC.

INDEXED ON MAP
6994

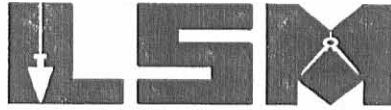
INDEXED ON MAP
6994 IP

REC'D 10-30-03 SMY OK

Lee Surveying and Mapping Co., Inc.

Land Surveys • Topography • Subdivisions • Construction Layout

117 N. Madriver St.
Bellefontaine OH 43311



Phone: (937) 593-7335
Fax: (937) 593-7444

PART OF LOT 160 0.024 ACRE

Lying in Section 36, Town 6, Range 8, Washington Township, Village of Russells Point, Logan County, Ohio.

Being out of Lot 160 of Camp Russell Allotment as recorded in Plat Cabinet A, Slide 131 of the Logan County Records of Plats and being more particularly described as follows:

Beginning at a chiseled "X" set in concrete on the north right-of-way of Sunset Street (15 feet wide) at the southwest corner of Lot 160 and the southeast corner of Lot 161.

THENCE, with the west line of Lot 160, N 34°-30'-02" E, a distance of 80.70 feet to a 5/8 inch iron rod set.

THENCE, with the south line of a 12 feet wide alley, S 55°-30'-00" E, a distance of 22.97 feet to a 5/8 inch iron rod set.

THENCE, S 37°-19'-19" W, a distance of 13.76 feet to a 5/8 inch iron rod set.

THENCE, S 65°-09'-01"W, a distance of 21.97 feet to a 5/8 inch iron rod set.

THENCE, S 43°-39'-39"W, a distance of 11.69 feet to a 5/8 inch iron rod set.

THENCE, S 32°-51'-33"W, a distance of 20.41 feet to a 5/8 inch iron rod set.

THENCE, S 53°-39'-28"W, a distance of 16.41 feet to a 5/8 inch iron rod set.

THENCE, with the north right-of-way of Sunset Street, N 63°-20'-11" W, a distance of 4.47 feet to the point of beginning.

Containing 0.024 acre.

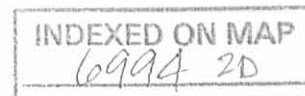
The basis for bearings is the south line of the said 12 feet wide alley, being S 55°-30'-00" E, and all other bearings are from angles and distances measured in a field survey by Lee Surveying and Mapping Co., Inc. on September 24, 2003.

Description prepared by:

William K. Bruce
Professional Surveyor 7437
October 28, 2003

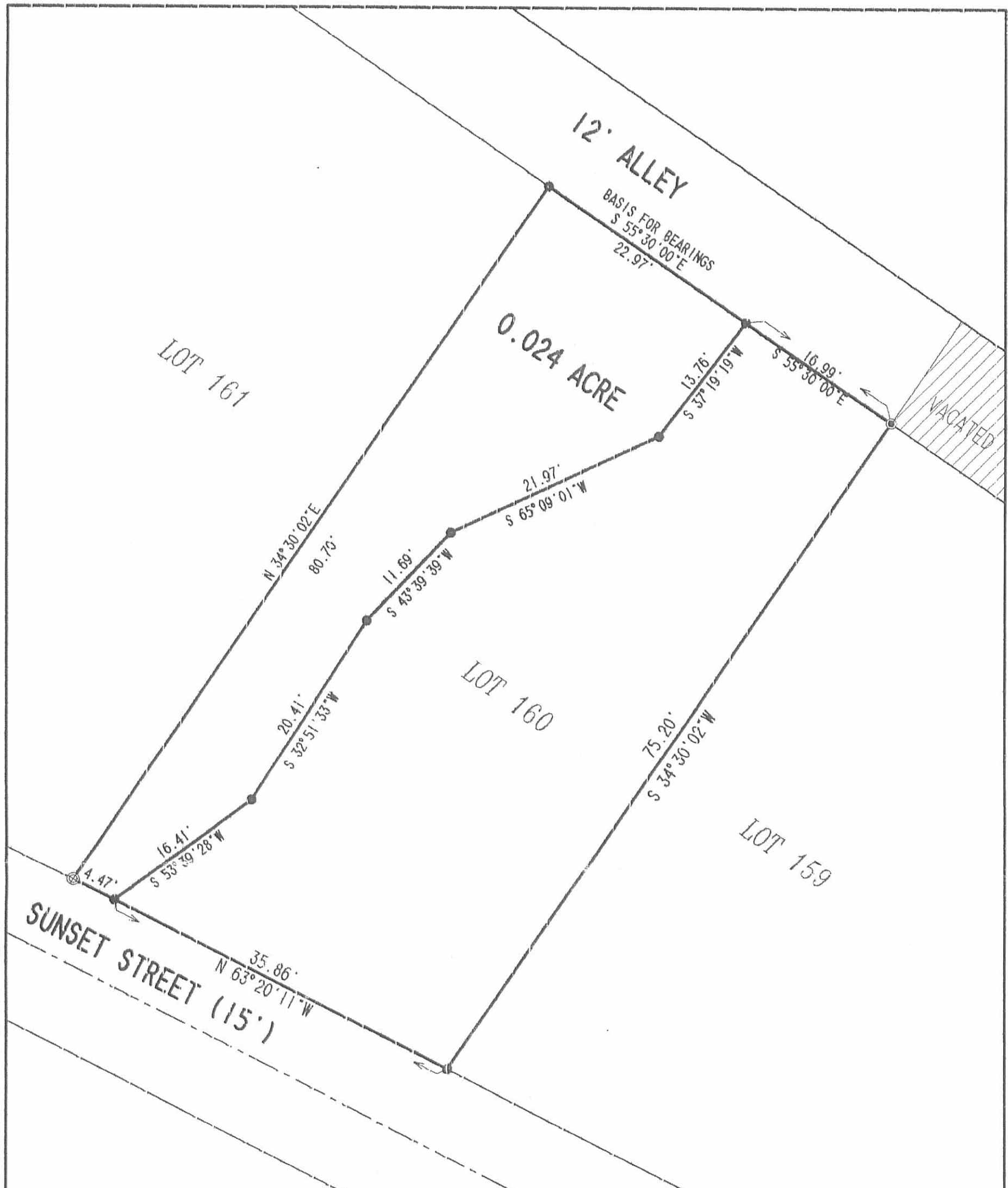


ORIGINAL STAMP IN GREEN

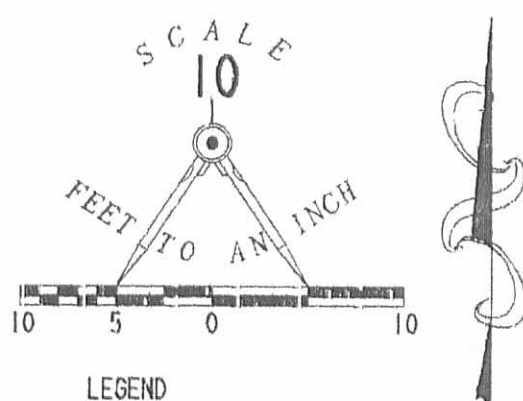


L-3672

REV'D 10-30-03 SW/AC



SURVEY OF 0.024 ACRE OUT OF
 LOT 160 OF CAMP RUSSELL ALLOTMENT
 PLAT CABINET A. SLIDE 131
 VOLUME 338. PAGE 999
 TRACT IV
 SECTION 36. TOWN 6. RANGE 8
 WASHINGTON TOWNSHIP
 VILLAGE OF RUSSELLS POINT
 LOGAN COUNTY, OHIO



- LEGEND
- 5/8 INCH IRON ROD SET
 - ⊙ MAG NAIL SET
 - ⊕ CHISELED "X" SET IN CONCRETE

INDEXED ON MAP
 6994 2P

SURVEYED BY:

 WILLIAM K. BRUCE
 PROFESSIONAL SURVEYOR 7437
 SEPTEMBER 24, 2003



ORIGINAL STAMP IN GREEN

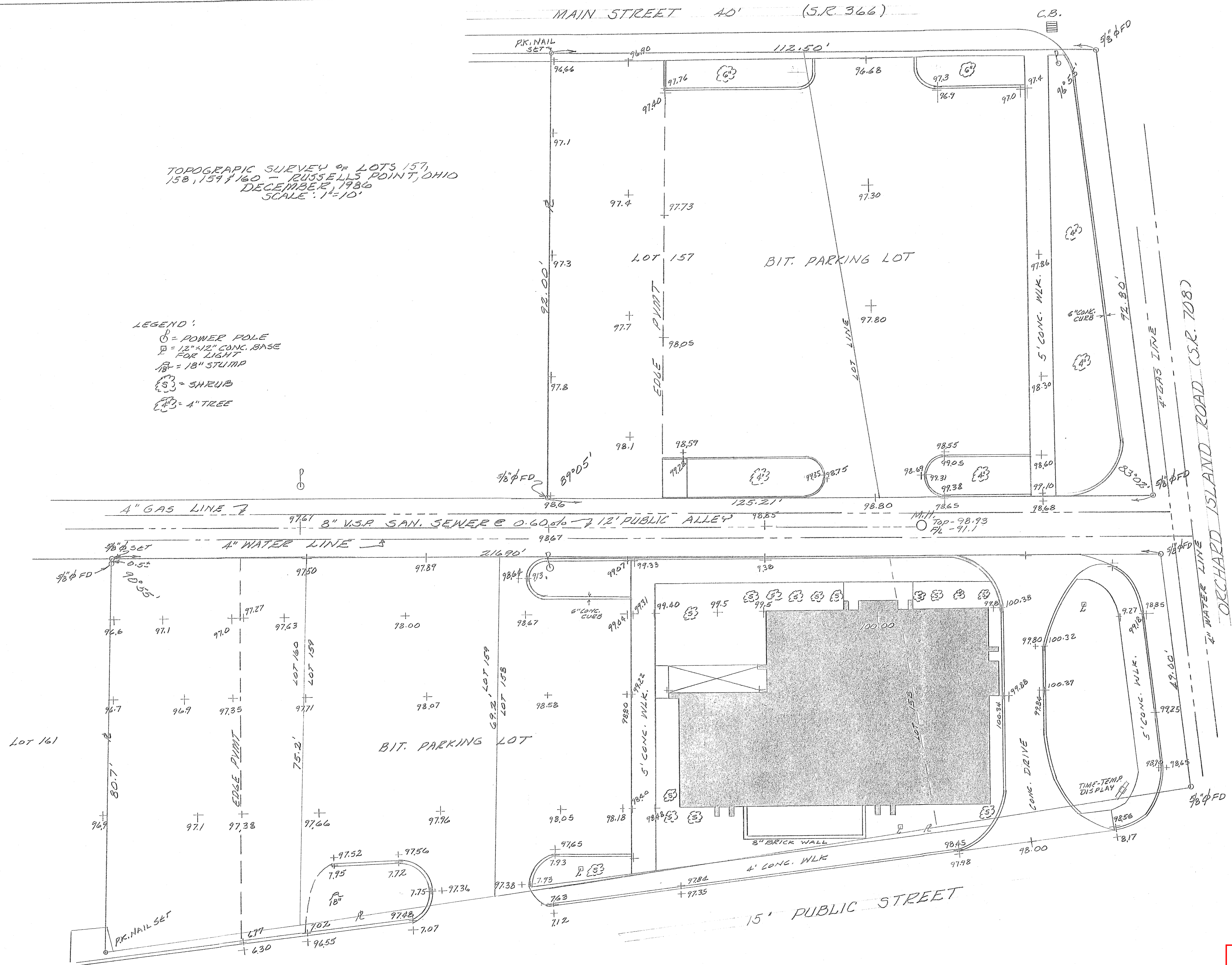
COPYRIGHT 2003 BY:
 LEE SURVEYING & MAPPING CO., INC.
 117 North Madriver Street
 BELLEFONTAINE, OHIO 43311
 (937) 593-7335

2 WORKING DAYS
BEFORE YOU DIG
 CALL TOLL FREE **800-362-2764**
 OHIO UTILITIES PROTECTION SERVICE.

TOPOGRAPHIC SURVEY OF LOTS 157,
158, 159 & 160 - RUSSELLS POINT, OHIO
DECEMBER, 1984
SCALE: 1"=10'

LEGEND:
 ○ = POWER POLE
 □ = 12" x 12" CONC. BASE FOR LIGHT
 ⊕ = 18" STUMP
 ⊙ = SHRUB
 ⊕ = 4" TREE

REFERENCE:
 DAN L. DODSON SURVEY S-119
 DATED OCTOBER, 1967



INDEXED ON MAP
6994



Leslie H. Geeslin
 LESLIE H. GEESLIN
 SURVEYOR
 RUSSELLS POINT, OHIO