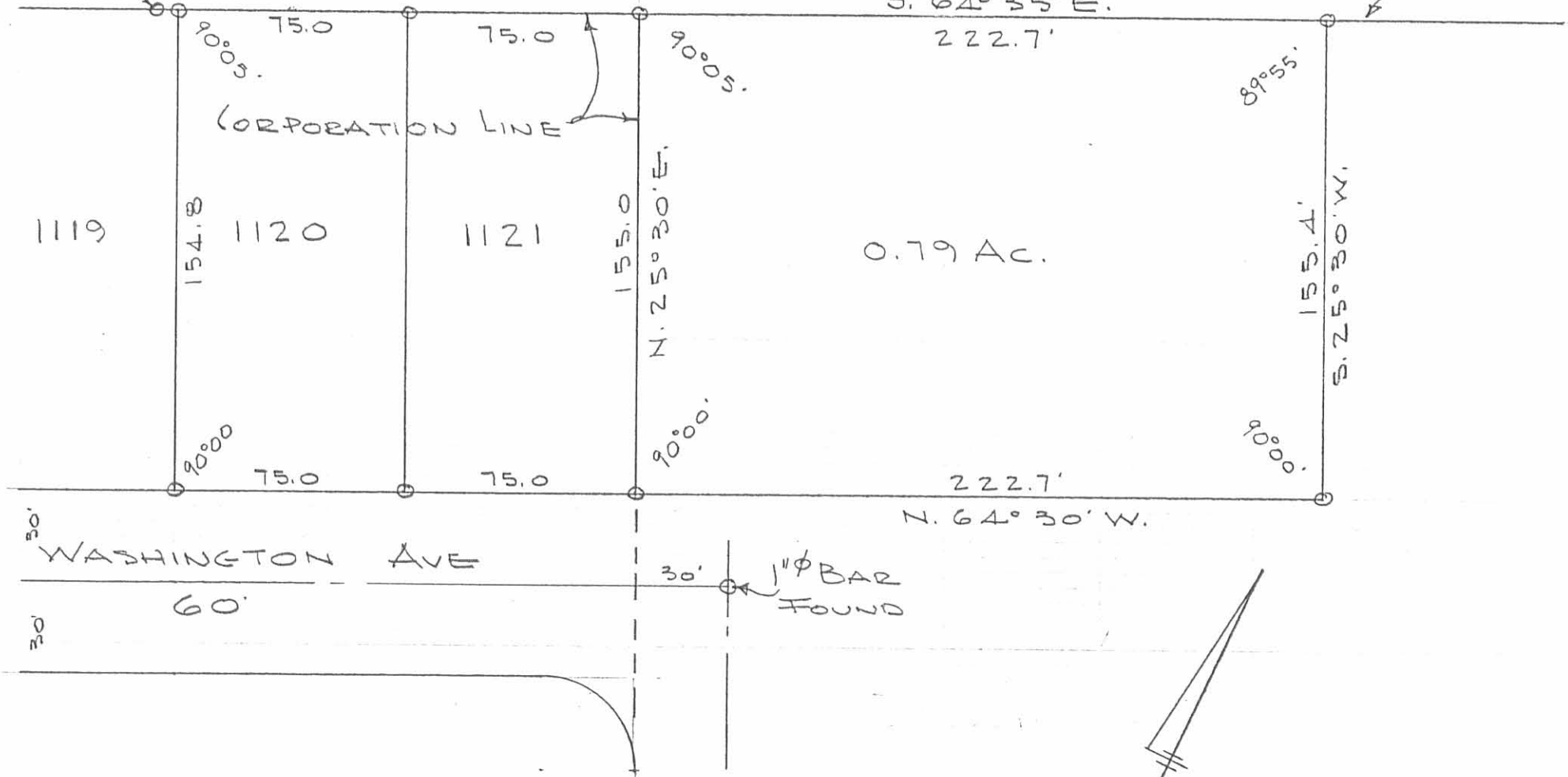


U.S. ROUTE 33

S.H.D.
R/W. MON.
1.21' W. OF CR.

LIMITED ACCESS R/W LINE
S. 64° 35' E.



BELLEFONTAINE DEVELOPMENT CO. SURVEY

OAK ACRES

RUSSELLS POINT, OHIO

OCTOBER, 25, 1969

SCALE 1" = 50'

○ = 5/8" φ BAR SET

INDEXED ON MAP
7494 1P

DAN L. DODSON
REG. SURVEYOR 4270
BELLEFONTAINE, O.