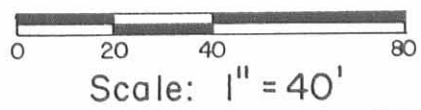


INDEXED ON MAP
7497 1P

Daniel E. Gilbert
 Daniel E. Gilbert, P.S.
 Reg. Sur. No. 5402
 400 N. Park St.
 Bellefontaine, Ohio 43311



Plecker Survey
 Lots No. 850-851
 Village of Russells Point
 Washington Township
 Logan County, Ohio
 May 3, 1991

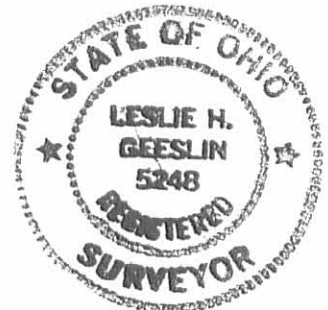
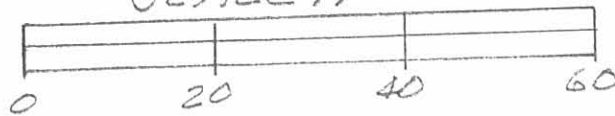


091-020

RECEIVED 8-26-94 SWY OK
MARSHALL STREET (30')



SURVEY OF LOTS 816-817-818, LOGAN CO., WASHINGTON TWP.
RUSSELLS POINT, OHIO.
AUGUST 24, 1994
SCALE: 1" = 20'



LEGEND:

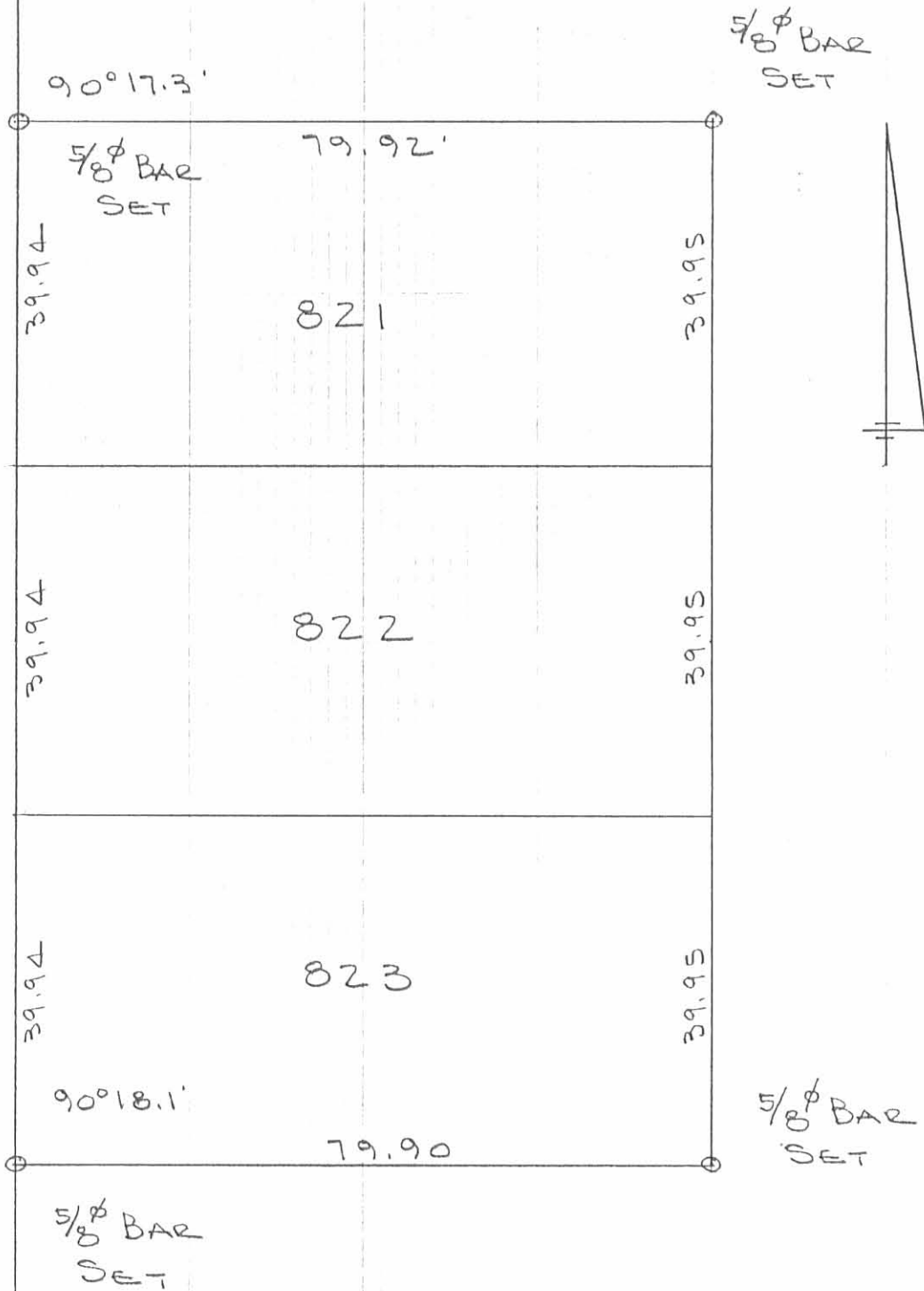
- = 5/8" IRON BAR FD
- = 5/8" IRON BAR SET

INDEXED ON MAP
7497 2P

Leslie H. Geeslin
LESLIE H. GEESLIN
RUSHSVANIA, OHIO
PH 513-468-2793

HIGH AVE. 30'

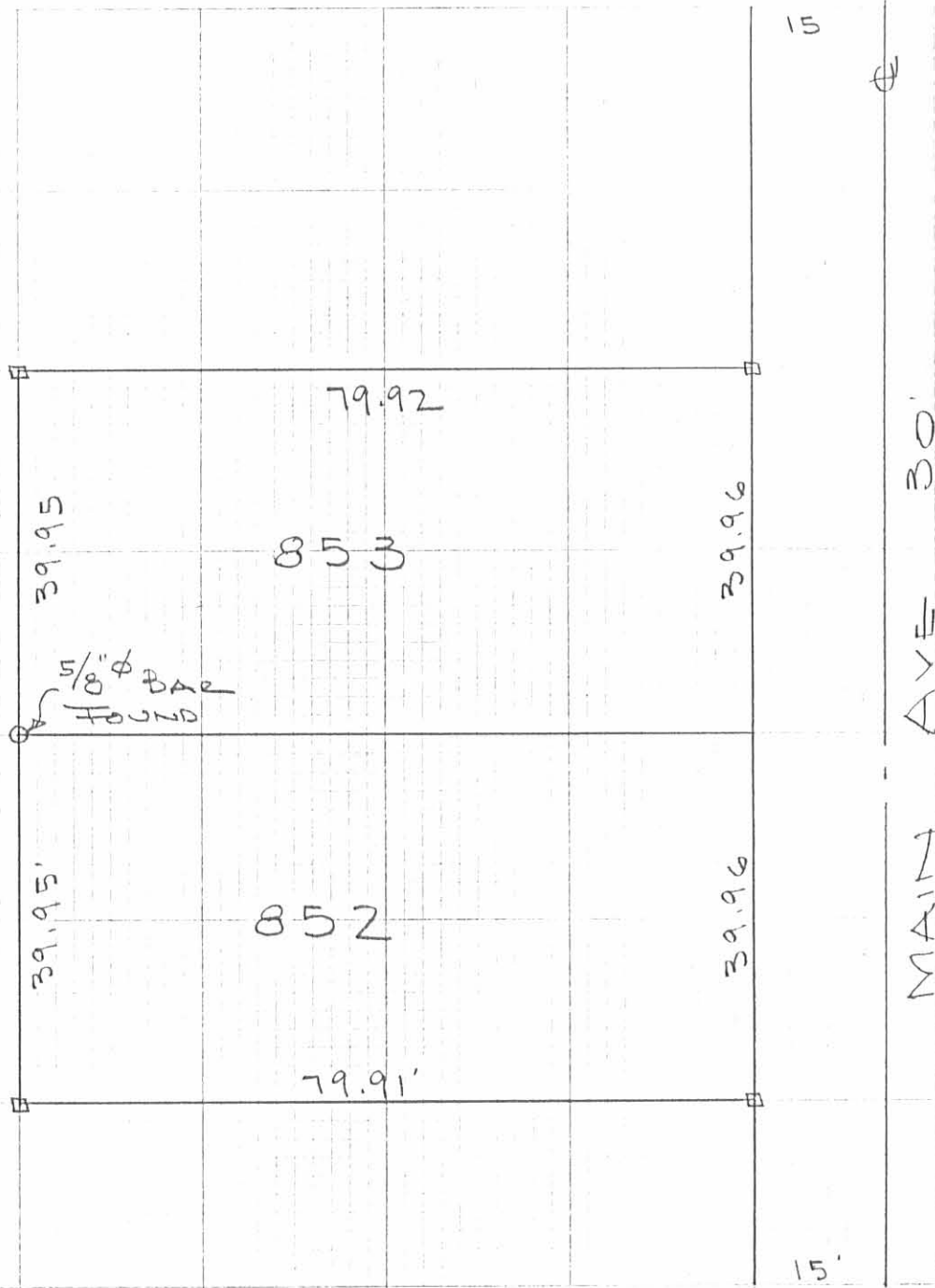
15'



SURVEY OF
LOTS 821-822-823
RUSSELLS POINT, OHIO
JUNE 2, 1973
SCALE 1" = 20'

DAN L. DODSON
REG. SURVEYOR 4270
BELLEFONTAINE, O
BL 20/5

INDEXED ON MAP
7497 3P



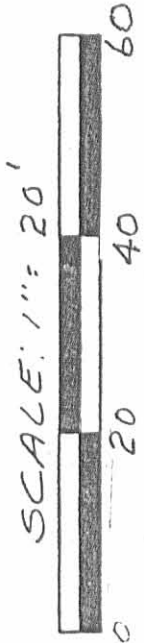
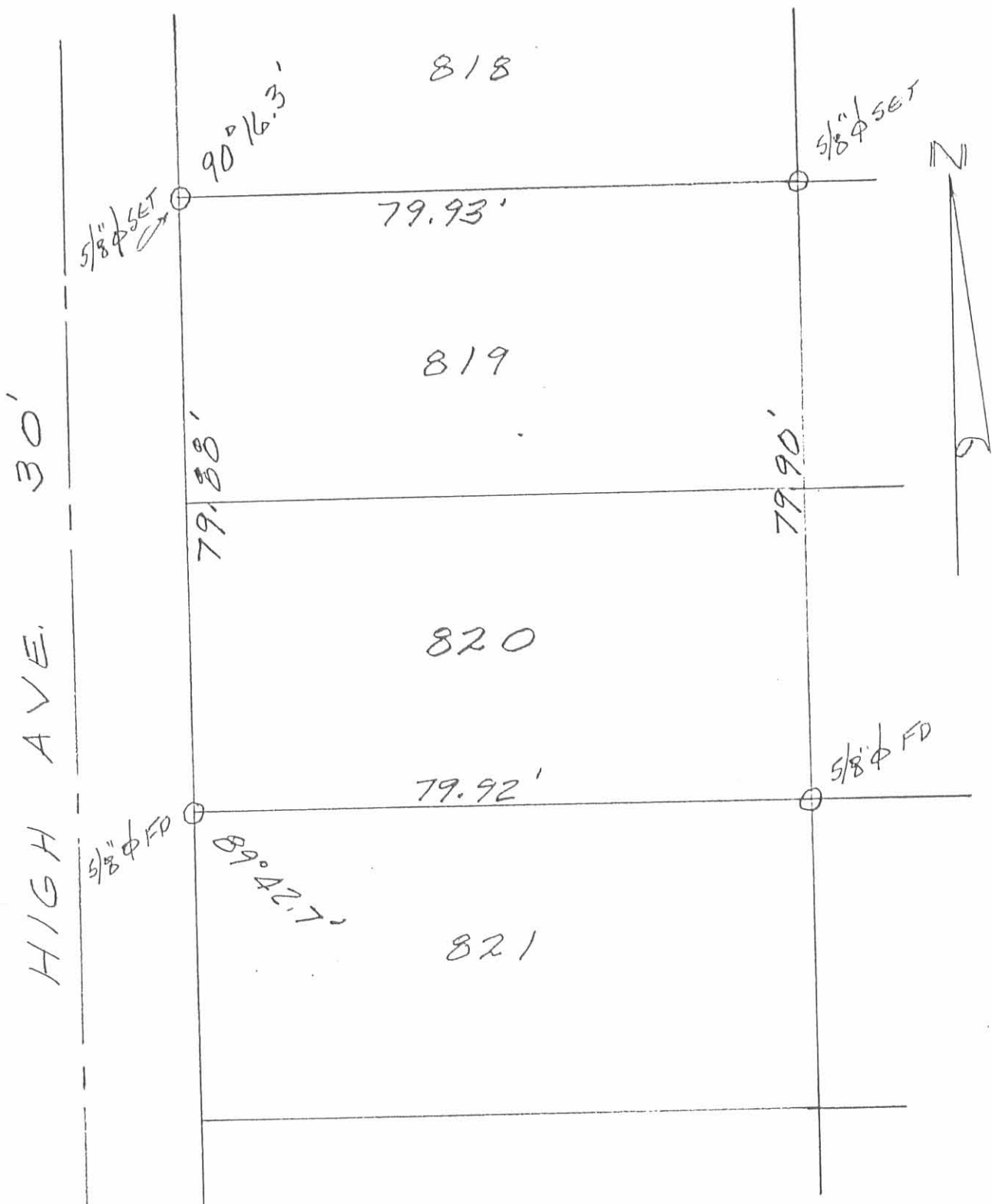
SURVEY OF
 LOTS 852 - 853
 RUSSELLS POINT, OHIO
 AUGUST 16, 1975

SCALE 1" = 20'

□ = 2" x 2" x 18" T&D. HUB SET

INDEXED ON MAP
 7497 4P

DAN L. DOOSON
 REG. SURVEYOR 4270
 BELLEFONTAINE, O



INDEXED ON MAP
7497 5P

SURVEY OF
LOTS 819 AND 820
RUSSELLS POINT, OHIO
SEPTEMBER 1, 1993
SCALE 1" = 20'



Leslie H. Geeslin
LESLIE H. GEESLIN
RUSHSVLVANIA, OHIO
PH 513-468-2793