



SURVEY OF
 LOTS 1029-1030
 RUSSELLS POINT, OHIO
 MARCH 29, 1975
 SCALE 1"=20'

INDEXED ON MAP
 7499 IP

DAN L. DOWSON
 REG. SURVEYOR 4270
 BELLEFONTAINE, O
 BK

SURVEY OF LOTS 1029-1030
 RUSSELLS POINT OHIO

- A = 3/4" PIPE FOUND & USED
- B = " " "
- C = 1/4" " "
- D = 3/4" PIPE FOUND & USED
- E = 1/2" " "
- F = 3/4" " "
- G = 3/4" PIPE FOUND & USED
- H = 3/4" " " IN CONC.
- I = " " "
- J = 1/2" ϕ BAR FOUND 0.1'S. & 0.4'E. OF COR.
- K = 5/8" ϕ BAR SET
- L = " " "
- M = 3'x3' BRICK PILLAR ON COR. SET HD HUB
 AT 38.00'
- N = POWER POLE ON COR. SET HD HUB @ 38.00'

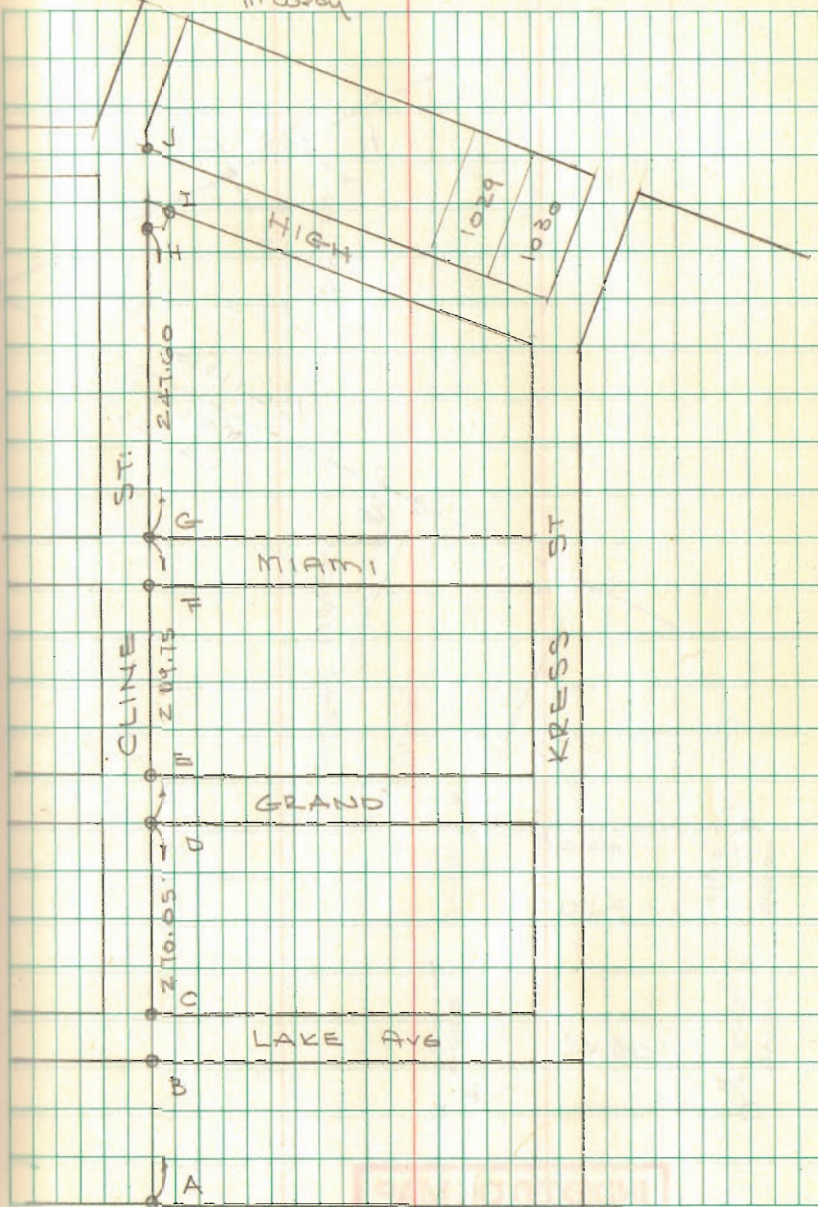
Note: Searched for lot Cor's. on Orchard Isl
 Rd. & High St. - Found Nothing
 Found Nothing on Kress St.

INDEXED ON MAP
 7499

Dodson
 Artis
 McLeary

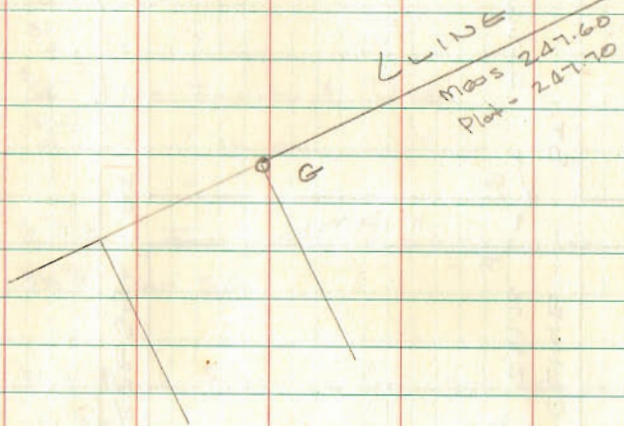
March 29, 1975

14



INDEXED ON MAP
 7499

LOTS 1029-1030 Cont'd.



INDEXED ON MAP
7499

