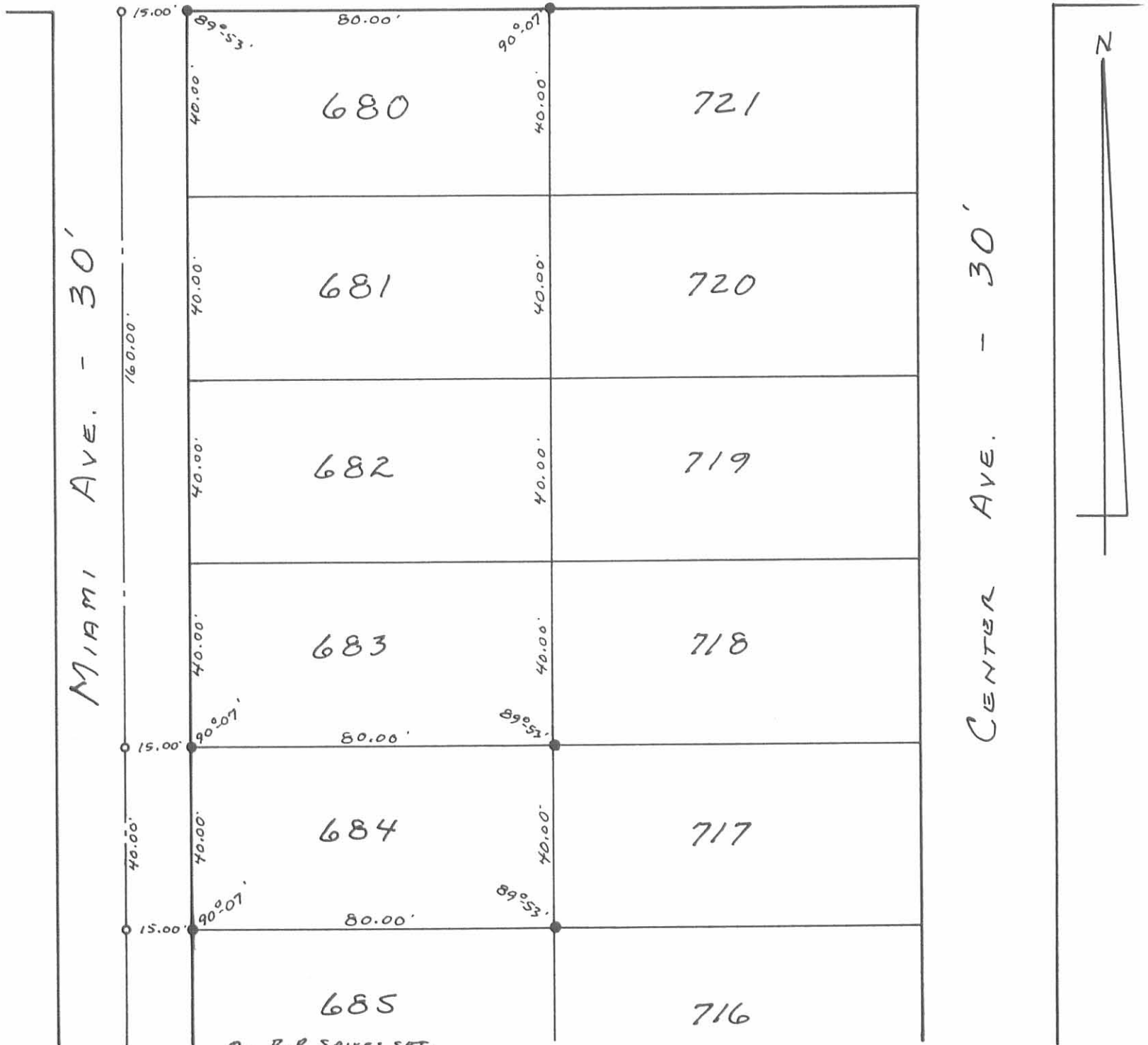


Received 10-3-88

MAP ROOM

MARSHALL ST. - 30'



○ - R.R. SPIKES SET.
 ● - 5/8" X 30" REBARS SET.

INDEXED ON MAP
 78411P

Daniel E. Gilbert
 DANIEL E. GILBERT, P.S.
 REG. SUR. NO. 5402
 400 N. PARK ST.
 BELLEFONTAINE, OHIO
 43311



HEMPHILL SURVEY
 LOTS 680, 681, 682, 683, 684
 VILLAGE OF RUSSELLS POINT
 WASHINGTON TOWNSHIP
 LOGAN COUNTY, OHIO
 SEPTEMBER 26, 1988

SCALE: 1" = 30'

088-082