

REC'D 9-20-07 JMY dlv

Lee Surveying and Mapping Co., Inc.

Land Surveys • Topography • Subdivisions • Construction Layout

117 N. Madriver St.
Bellefontaine OH 43311



Phone: (937) 593-7335
Fax: (937) 593-7444

INDIAN LAKE HARBOURSIDE LIMITED PARTNERSHIP 1.181 ACRES

Lying in the Village of Russells Point, Section 36, Town 6, Range 8, Washington Township, Logan County, Ohio.

Being out of the remainder of the Indian Lake Harbourside Limited Partnership, an Ohio Limited Partnership, original 7.424 acre tract as deeded in Official Record 23, Page 93, and all of the remainder of the original 0.211 acre tract as deeded in Official Record 290, Page 240 of the Logan County Records of Deeds and being more particularly described as follows:

Beginning at a drill hole in concrete found on the west right-of-way of Chase Avenue (20 feet wide) on the northeast corner of the Harbourside on the Lagoon Condominiums, (Plat Cabinet B, Slide 30A).

THENCE, with the lines of the Harbourside on the Lagoon Condominiums, the following six courses:

N 48°-29'-47" W, a distance of 227.93 feet to a drill hole found in concrete.

S 41°-30'-17" W, a distance of 32.27 feet to a MAG nail set in concrete.

N 48°-30'-18" W, a distance of 43.73 feet to a 5/8 inch iron rod found.

S 41°-30'-13" W, a distance of 40.46 feet to a point in water.

S 23°-39'-34" W, a distance of 168.69 feet to a 5/8 inch iron rod found.

N 56°-20'-26" W, a distance of 165.39 feet to a chiseled "X" in concrete set on the sea wall, passing a 5/8 inch iron rod found at 161.08 feet.

THENCE, with the face of the concrete seawall, N 10°-09'-38" E, a distance of 53.37 feet to a chiseled "X" in concrete set on the sea wall.

THENCE, N 25°-30'-13" E, a distance of 55.01 feet to a 5/8 inch iron rod set.

THENCE, N 29°-42'-13" E, a distance of 87.70 feet to a 5/8 inch iron rod set.

THENCE, with the lines of the American Society of Ephesus, Inc. an Ohio Non-Profit Corporation 0.234 acre tract, (O.R. 290, Pg. 243), the following four courses:

S 61°-43'-13" E, a distance of 74.01 feet to a 5/8 inch iron rod found.

N 39°-50'-57" E, a distance of 91.88 feet to a 5/8 inch iron rod found.

S 50°-36'-38" E, a distance of 46.44 feet to a 5/8 inch iron rod found.

N 19°-26'-50" E, a distance of 7.36 feet to a 5/8 inch iron rod found.

THENCE, with the southwesterly lines of the Roderick J. Clark 0.552 acre tract, (O.R. 347, Pg. 339), the following two (2) courses:

S 50°-27'-37" E, a distance of 101.10 feet to a 5/8 inch iron rod found.

S 50°-40'-47" E, a distance of 2.98 feet to a 5/8 inch iron rod found.

THENCE, with the lines of the Point Harbor Inc., an Ohio Corporation, original 2.94 acre tract, (O.R. 347, Pg. 341), the following two (2) courses:

9190 1D-1

Lee Surveying and Mapping Co., Inc.

Land Surveys • Topography • Subdivisions • Construction Layout

117 N. Madriver St.
Bellefontaine OH 43311



Phone: (937) 593-7335
Fax: (937) 593-7444

S 42°-15'-47" W, a distance of 29.20 feet to a 5/8 inch iron rod found.

S 48°-27'-54" E, a distance of 221.59 feet to a 5/8 inch iron rod found.

THENCE, with the west right-of-way of Chase Avenue, S 23°-44'-07" W, a distance of 20.99 feet to the point of beginning.

Containing 1.181 acres.

The basis for bearings is the northeasterly line of Harbourside on the Lagoon Condominiums, being N 48°-29'-47" W, and all other bearings are from angles and distances measured in a field survey by Lee Surveying and Mapping Co., Inc. on January 4, 2000.

Description prepared by:

A handwritten signature in black ink, appearing to read 'J. Lee', is written over the printed name.

Jeffrey I. Lee
Professional Surveyor 6359
January 10, 2000



ORIGINAL STAMP IN GREEN L-1134

REC'D 9-21-00 SMY OK ✓

Lee Surveying and Mapping Co., Inc.

Land Surveys • Topography • Subdivisions • Construction Layout

117 N. Madriver St.
Bellefontaine OH 43311



Phone: (937) 593-7335
Fax: (937) 593-7444

STATE OF OHIO INDIAN LAKE LAKELANDS 0.016 ACRE

Lying in the Village of Russells Point, Section 36, Town 6, Range 8, Washington Township, Logan County, Ohio.

Being part of the State of Ohio Indian Lake Lakelands and being more particularly described as follows:

Beginning at a 5/8 inch iron rod set on the northwest corner of the remainder of the Indian Lake Harbourside Limited Partnership, an Ohio Limited Partnership, 7.424 acre tract (O.R. 23, Pg. 93) and on the southwest corner of the American Society of Ephesus, Inc., an Ohio Non-Profit Corporation, 0.234 acre tract (O.R. 290, Pg. 243).

THENCE, with the lines of the said 7.424 acre tract, the following two (2) courses:

S 29°-42'-13" W, a distance of 87.70 feet to a 5/8 inch iron rod set.

S 25°-30'-13" W, a distance of 55.01 feet to a chiseled "X" in concrete set in the sea wall.

THENCE, with the concrete sea wall, N 10°-09'-38" E, a distance of 23.67 feet to a MAG nail set.

THENCE, continuing with the concrete sea wall, N 28°-51'-49" E, a distance of 116.03 feet to a 5/8 inch iron rod set.

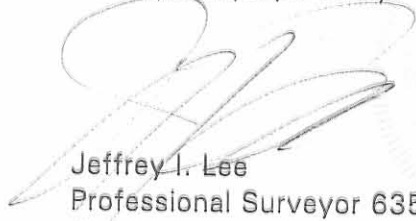
THENCE, continuing with the concrete sea wall, N 20°-08'-02" E, a distance of 4.13 feet to a chiseled "X" in concrete set.

THENCE, with the northeasterly line of the said 7.424 acre tract extended, S 61°-43'-13" E, a distance of 6.28 feet to the point of beginning.

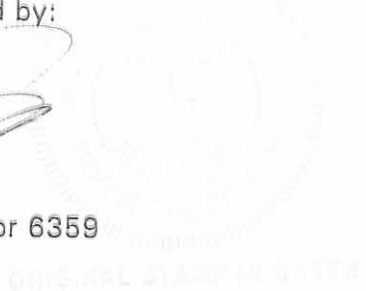
Containing 0.016 acre.

The basis for bearings is the northeasterly line of Harbourside on the Lagoon Condominiums, being N 48°-29'-47" W, and all other bearings are from angles and distances measured in a field survey by Lee Surveying and Mapping Co., Inc. on January 4, 2000.

Description prepared by:


Jeffrey I. Lee
Professional Surveyor 6359

January 10, 2000



L-1134

91901D-3

REC'D 9-20-00 SMJ/RL ✓

Lee Surveying and Mapping Co., Inc.

Land Surveys • Topography • Subdivisions • Construction Layout

117 N. Madriver St.
Bellefontaine OH 43311



Phone: (937) 593-7335
Fax: (937) 593-7444

INDIAN LAKE HARBOURSIDE LIMITED PARTNERSHIP 0.004 ACRES

Lying in the Village of Russells Point, Section 36, Town 6, Range 8, Washington Township, Logan County, Ohio.

Being out of the remainder of the Indian Lake Harbourside Limited Partnership, an Ohio Limited Partnership, original 7.424 acre tract as deeded in Official Record 23, Page 93, and 0.211 acre tract as deeded in Official Record 290, Page 240 of the Logan County Records of Deeds and being more particularly described as follows:

Beginning at a 5/8 inch iron rod set on the northwest corner of the remainder of the Indian Lake Harbourside Limited Partnership, an Ohio Limited Partnership, 7.424 acre tract (O.R. 23, Pg. 93) and on the southwest corner of the American Society of Ephesus, Inc., an Ohio Non-Profit Corporation, 0.234 acre tract (O.R. 290, Pg. 243).

THENCE, with the lines of the said 7.424 acre tract, the following two (2) courses:

S 29°-42'-13" W, a distance of 87.70 feet to a 5/8 inch iron rod set.

S 25°-30'-13" W, a distance of 55.01 feet to a chiseled "X" in concrete set in the sea wall at the TRUE POINT OF BEGINNING.

THENCE, with the concrete sea wall, S 10°-09'-38" W, a distance of 53.37 feet to a chiseled "X" in concrete set in the sea wall.

THENCE, N 56°-20'-26" W, a distance of 5.54 feet to a point in the water.

THENCE, N 13°-21'-13" E, a distance of 41.02 feet to a point in the water.

THENCE, N 25°-30'-13" E, a distance of 10.58 feet to the point of beginning.

Containing 0.004 acre.

The basis for bearings is the northeasterly line of Harbourside on the Lagoon Condominiums, being N 48°-29'-47" W, and all other bearings are from angles and distances measured in a field survey by Lee Surveying and Mapping Co., Inc. on January 4, 2000.

Description prepared by:

A handwritten signature in black ink, appearing to read 'J. Lee', is written over a faint circular stamp.

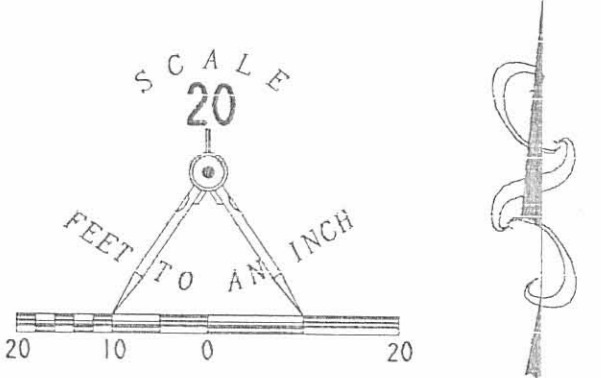
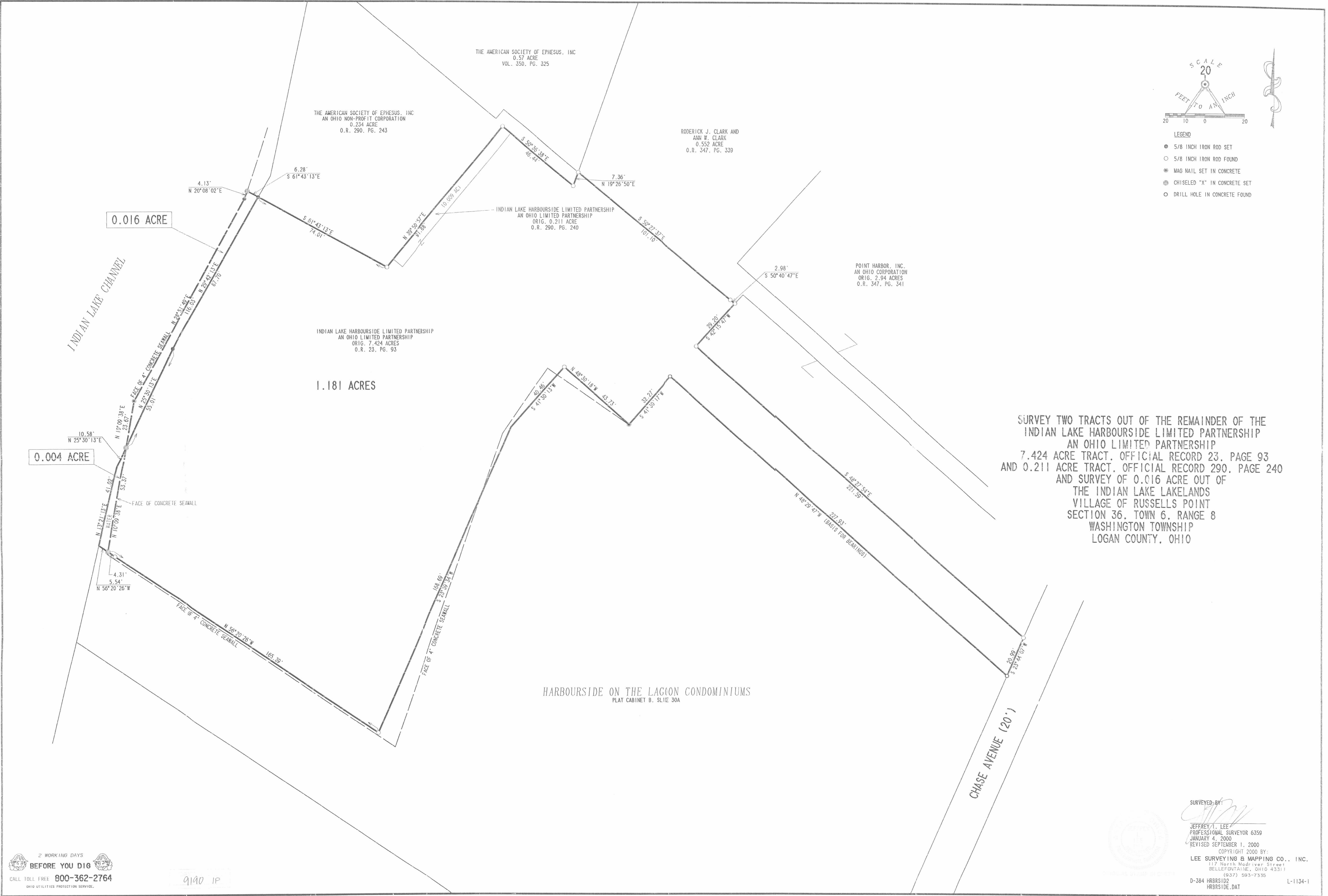
Jeffrey I. Lee
Professional Surveyor 6359
September 1, 2000



ORIGINAL STAMP IN GREEN L-1134

9190 LTD

2007.9.20.00 9M 011



- LEGEND
- 5/8 INCH IRON ROD SET
 - 5/8 INCH IRON ROD FOUND
 - ⊙ MAG NAIL SET IN CONCRETE
 - ⊕ CHISELED "X" IN CONCRETE SET
 - DRILL HOLE IN CONCRETE FOUND

SURVEY TWO TRACTS OUT OF THE REMAINDER OF THE
 INDIAN LAKE HARBOURSIDE LIMITED PARTNERSHIP
 AN OHIO LIMITED PARTNERSHIP
 7.424 ACRE TRACT, OFFICIAL RECORD 23, PAGE 93
 AND 0.211 ACRE TRACT, OFFICIAL RECORD 290, PAGE 240
 AND SURVEY OF 0.016 ACRE OUT OF
 THE INDIAN LAKE LAKELANDS
 VILLAGE OF RUSSELLS POINT
 SECTION 36, TOWN 6, RANGE 8
 WASHINGTON TOWNSHIP
 LOGAN COUNTY, OHIO

HARBOURSIDE ON THE LAGOON CONDOMINIUMS
 PLAT CABINET B, SL1E 30A

SURVEYED BY:

 JEFFREY T. LEE
 PROFESSIONAL SURVEYOR 6359
 JANUARY 4, 2000
 REVISED SEPTEMBER 1, 2000
 COPYRIGHT 2000 BY:
 LEE SURVEYING & MAPPING CO., INC.
 117 North Madriver Street
 BELLEFONTAINE, OHIO 43311
 (937) 593-7335
 D-384 HRBS102
 HRBSIDE.DAT

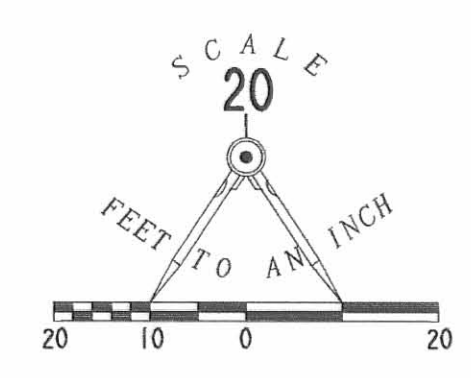
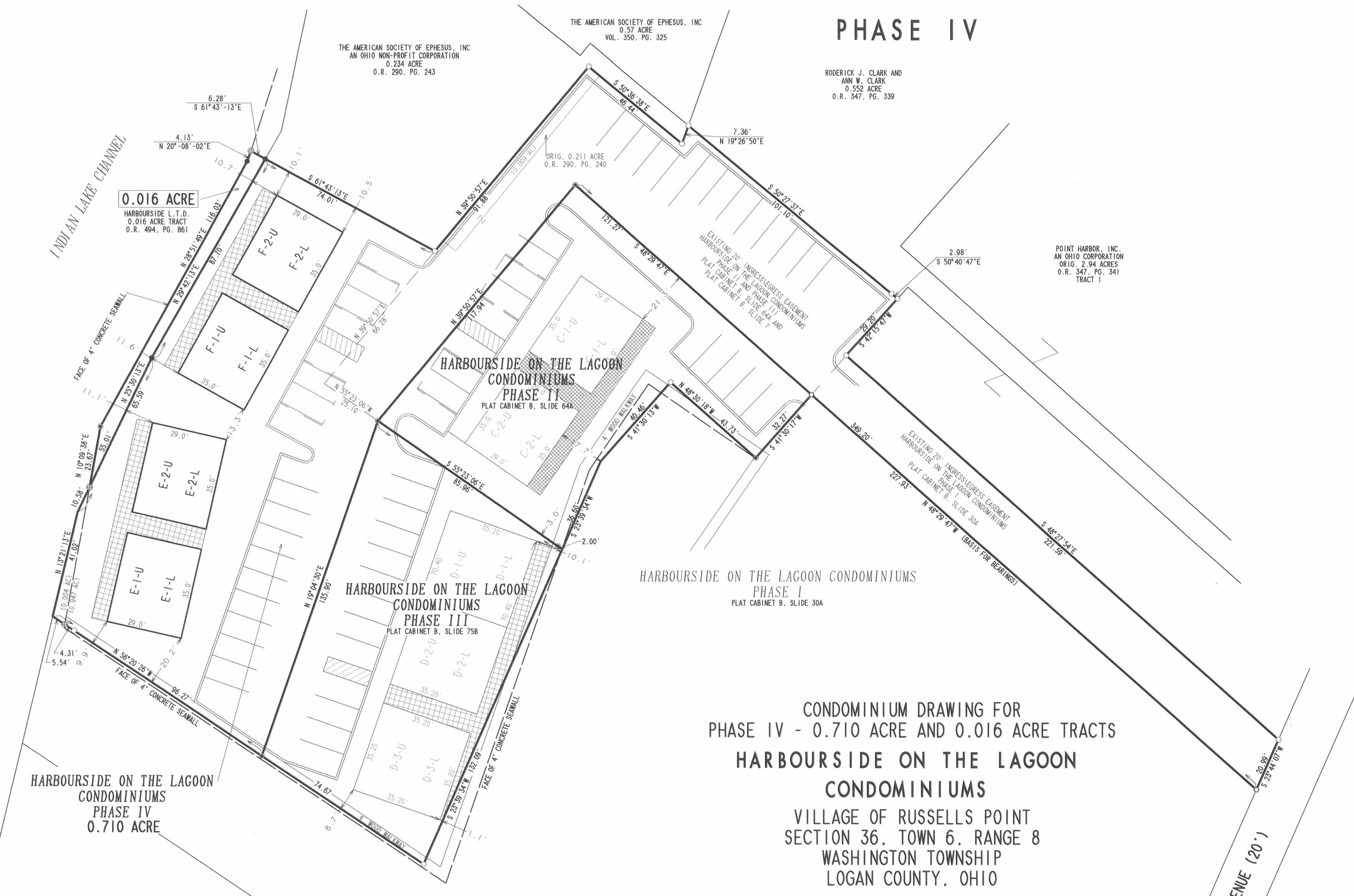
2 WORKING DAYS
BEFORE YOU DIG
 CALL TOLL FREE 800-362-2764
 OHIO UTILITIES PROTECTION SERVICE

9190 1P

L-1134-1

HARBOURSIDE ON THE LAGOON CONDOMINIUMS

PHASE IV



- LEGEND**
- 5/8 INCH IRON ROD SET
 - 5/8 INCH IRON ROD FOUND
 - MAG NAIL SET
 - ⊗ CHISELED 'X' IN CONCRETE SET
 - DRILL HOLE IN CONCRETE FOUND
 - ▨ LIMITED COMMON AREA

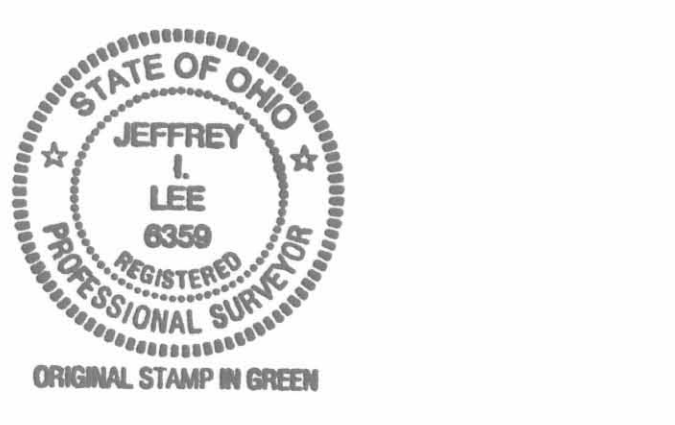
CONDOMINIUM DRAWING FOR
 PHASE IV - 0.710 ACRE AND 0.016 ACRE TRACTS
**HARBOURSIDE ON THE LAGOON
 CONDOMINIUMS**
 VILLAGE OF RUSSELLS POINT
 SECTION 36, TOWN 6, RANGE 8
 WASHINGTON TOWNSHIP
 LOGAN COUNTY, OHIO

PART OF THE
 INDIAN LAKE HARBOURSIDE LIMITED PARTNERSHIP
 AN OHIO LIMITED PARTNERSHIP
 ORIGINAL 7.424 ACRES
 OFFICIAL RECORD 23, PAGE 93
 ALL OF THE ORIGINAL 0.211 ACRE
 OFFICIAL RECORD 290, PAGE 240
 AND ALL OF THE ORIGINAL 0.016 ACRE
 OFFICIAL RECORD 494, PAGE 861

WE DO HEREBY STATE THAT THESE DRAWINGS OF HARBOURSIDE ON THE LAGOON CONDOMINIUMS, PHASE IV SHOW ALL BUILDINGS AS CONSTRUCTED.

Michael W. Bow
 MICHAEL W. BOW
 PROFESSIONAL ENGINEER 38860
 JANUARY 30, 2003

Jeffrey I. Lee
 JEFFREY I. LEE
 PROFESSIONAL SURVEYOR 6359
 JANUARY 30, 2003



THE M & K ENGINEERING CO.
 1691 T.R. 31 NORTH
 BELLEFONTAINE, OHIO 43311
 (937) 592-2697

LEE SURVEYING AND MAPPING CO., INC.
 117 NORTH MADRIVER STREET
 BELLEFONTAINE, OHIO, 43311
 (937) 593-7335

APPROVED BY THE RUSSELLS POINT PLANNING COMMISSION
 THIS _____ DAY OF _____, 2003.

CHAIRMAN, RUSSELLS POINT PLANNING COMMISSION

PLAT CHECKED *Jon L. Wins* 4-2-03
 DESCRIPTION CHECKED *Jon L. Wins* 4-2-03

TRANSFERRED THIS 3rd DAY OF April, 2003.

Michael E. Godwin
 AUDITOR, LOGAN COUNTY, OHIO

RECORDED IN PLAT CABINET **B**, SLIDE **82A-83A**

RECEIVED FOR RECORD AT 11:01 O'CLOCK A.M.

THIS 3rd DAY OF April, 2003.

Linda Hanson
 RECORDER, LOGAN COUNTY, OHIO

INDIAN LAKE SANITARY SEWER DISTRICT

2 WORKING DAYS
BEFORE YOU DIG
 CALL TOLL FREE 800-362-2764
 OHIO UTILITIES PROTECTION SERVICE.

COPYRIGHT 2003 BY:
LEE SURVEYING & MAPPING CO., INC.
 117 North Madriver Street
 BELLEFONTAINE, OHIO 43311
 (937) 593-7335
 D-396 HRBRSD4 HRBRSD.DAT L-1134-1

J-294 C

PREPARED BY:

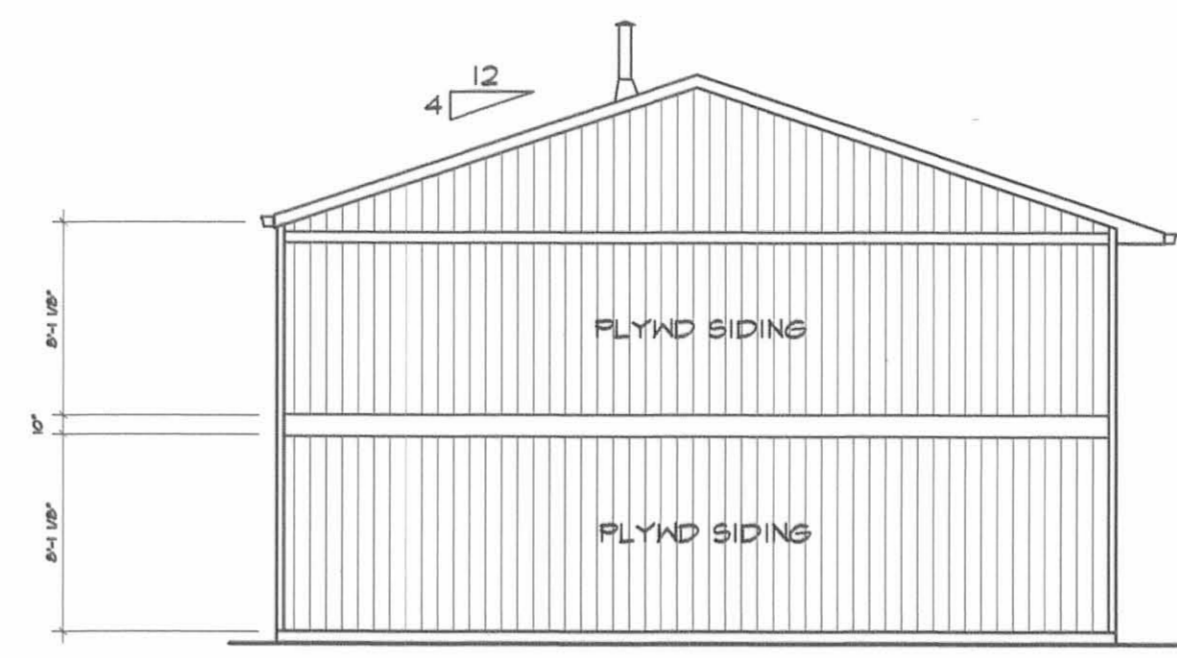
Michael W. Bow
 MICHAEL W. BOW, P.E.
 THE M&K ENGINEERING CO.

2/18/03
 DATE



WATER SIDE ELEVATION FRONT

SCALE: 1/8" = 1'-0"



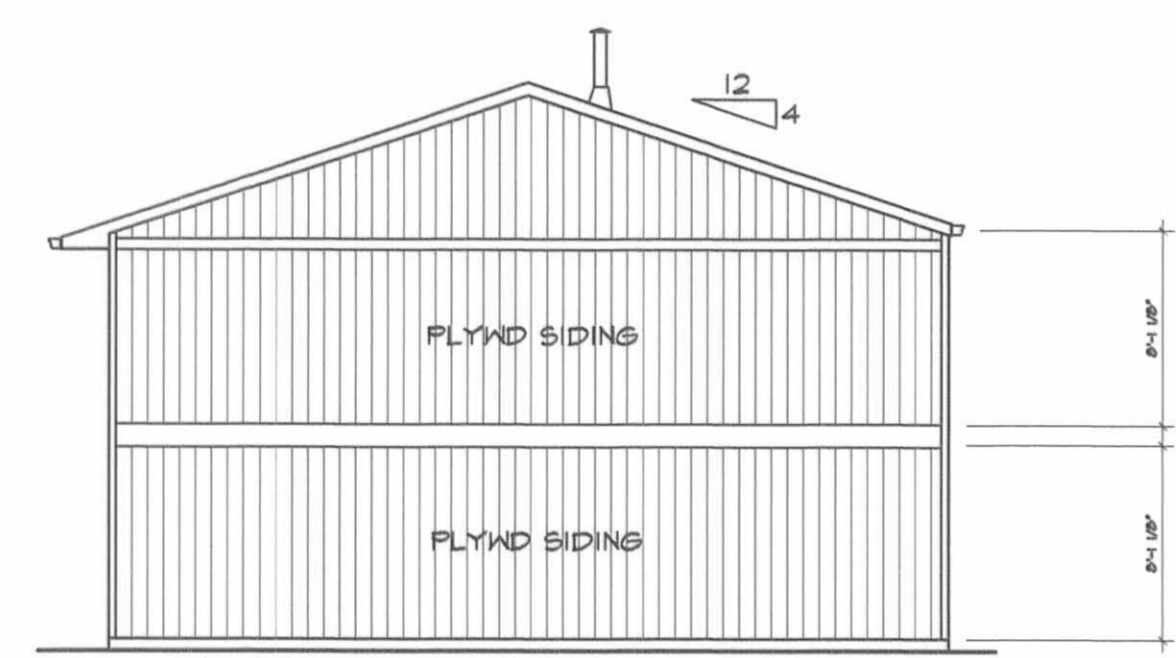
SIDE ELEV RIGHT

SCALE: 1/8" = 1'-0"



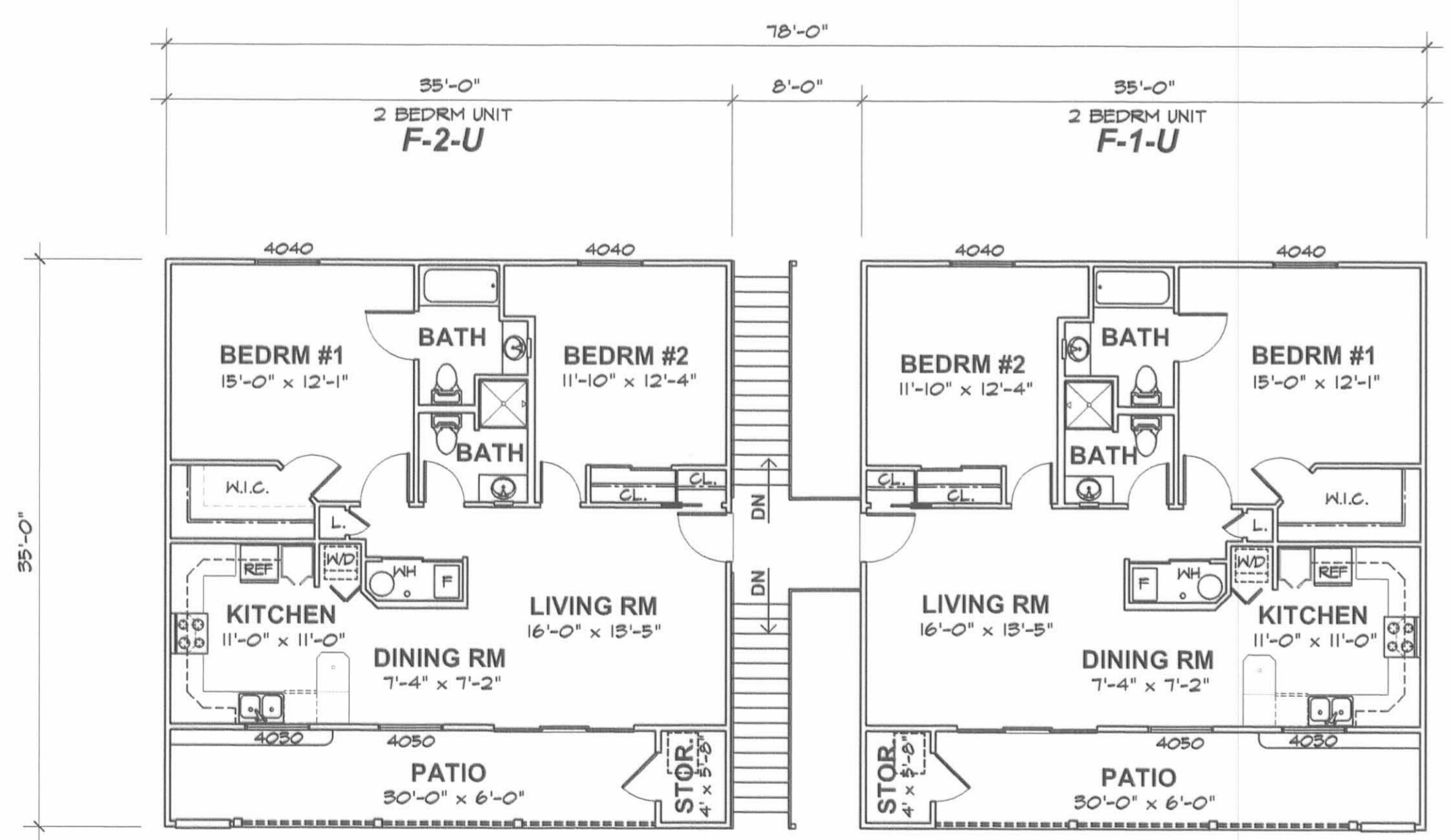
PARKING SIDE ELEVATION REAR

SCALE: 1/8" = 1'-0"



SIDE ELEV LEFT

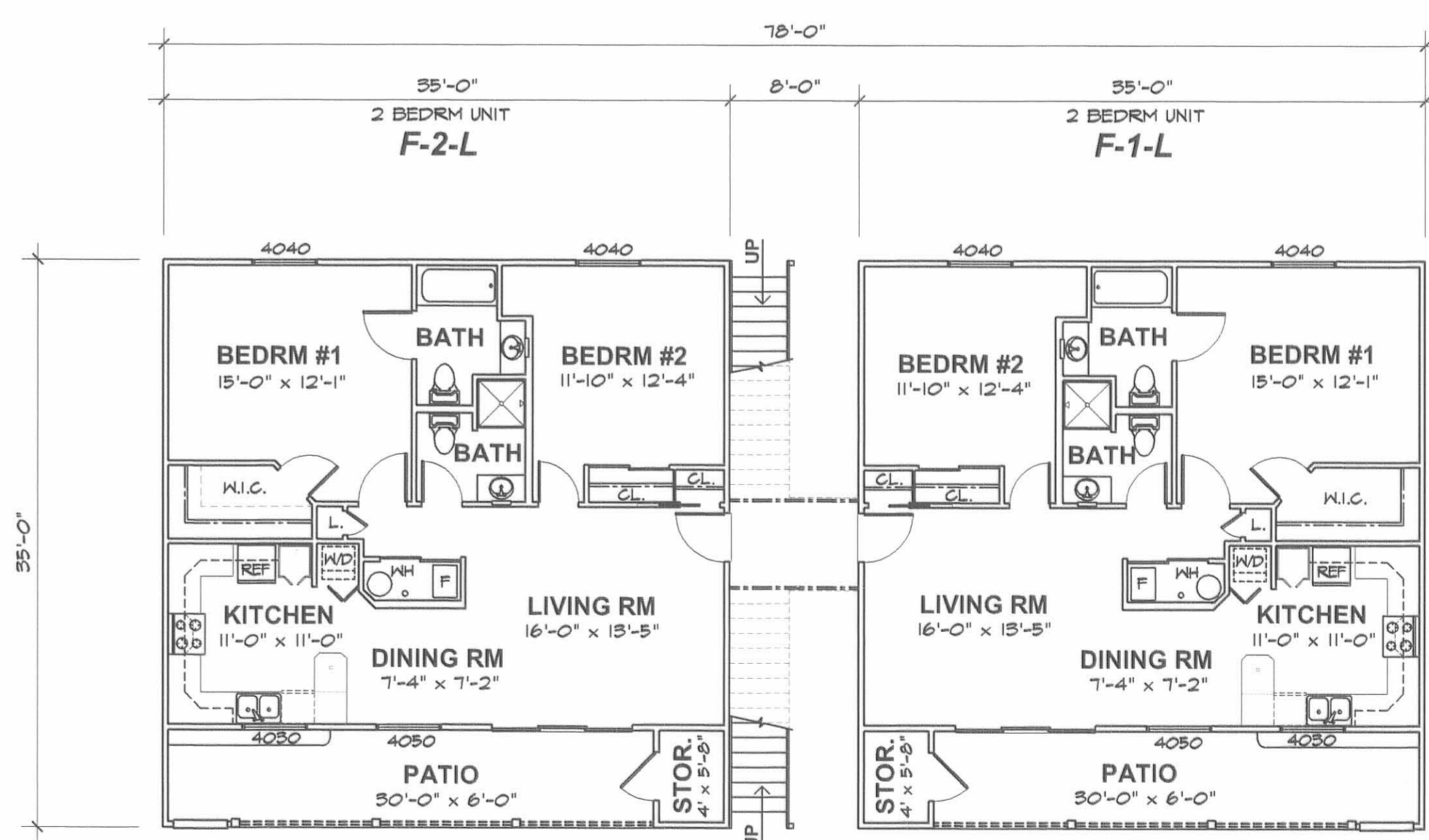
SCALE: 1/8" = 1'-0"



SECOND FLOOR PLAN

SCALE: 1/8" = 1'-0"

UNIT DESIGNATION DESCRIPTION:
 F-1-U = BUILDING "F"
 CONDO #1
 UPPER LEVEL



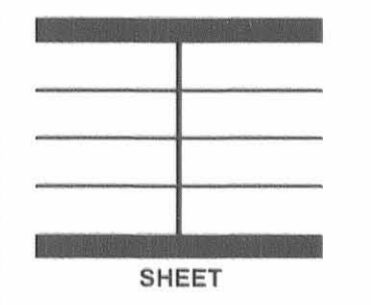
FIRST FLOOR PLAN

SCALE: 1/8" = 1'-0"

UNIT DESIGNATION DESCRIPTION:
 F-1-L = BUILDING "F"
 CONDO #1
 LOWER LEVEL

THE **M & K ENGINEERING CO.**
 322 East Main St. P. O. Box 1457
 Russells Point, Ohio 43348
 TEL: 937.842.2698 FAX: 937.842.2697

NEW BUILDING "F" FOR:
HARBOURSIDE ON THE LAGOON
RUSSELLS POINT, OHIO



SHEET

3

3 OF 3

J-294C

PREPARED BY:

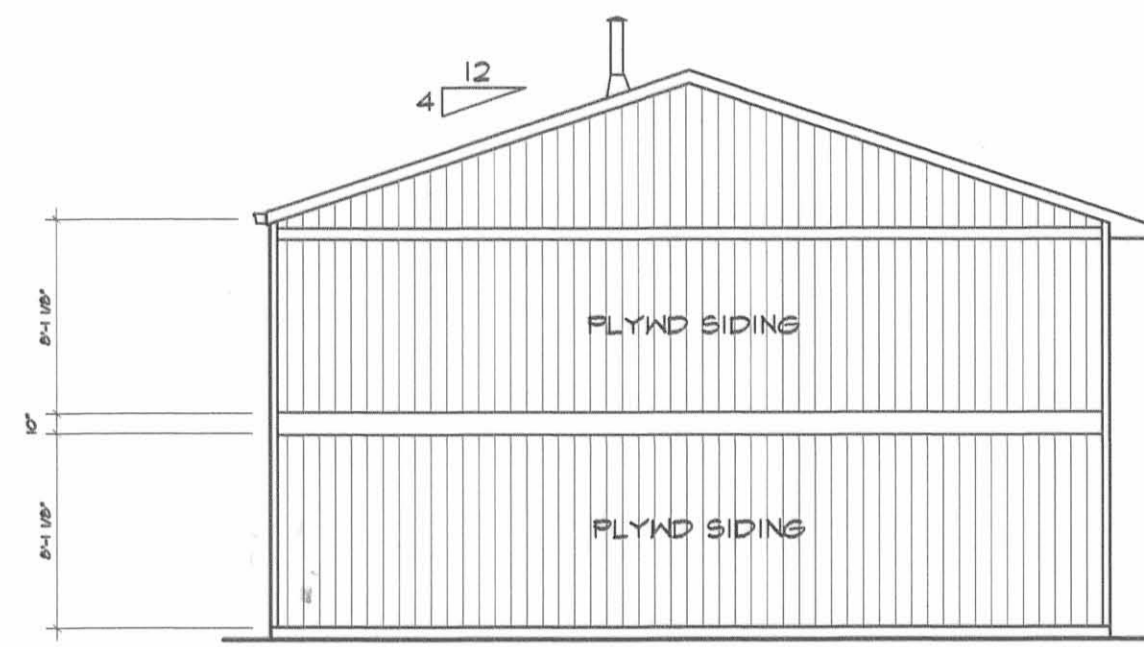
Michael W. Bow
 MICHAEL W. BOW, P.E.
 THE M&K ENGINEERING CO.

2/18/03
 DATE



WATER SIDE ELEVATION FRONT

SCALE: 1/8" = 1'-0"



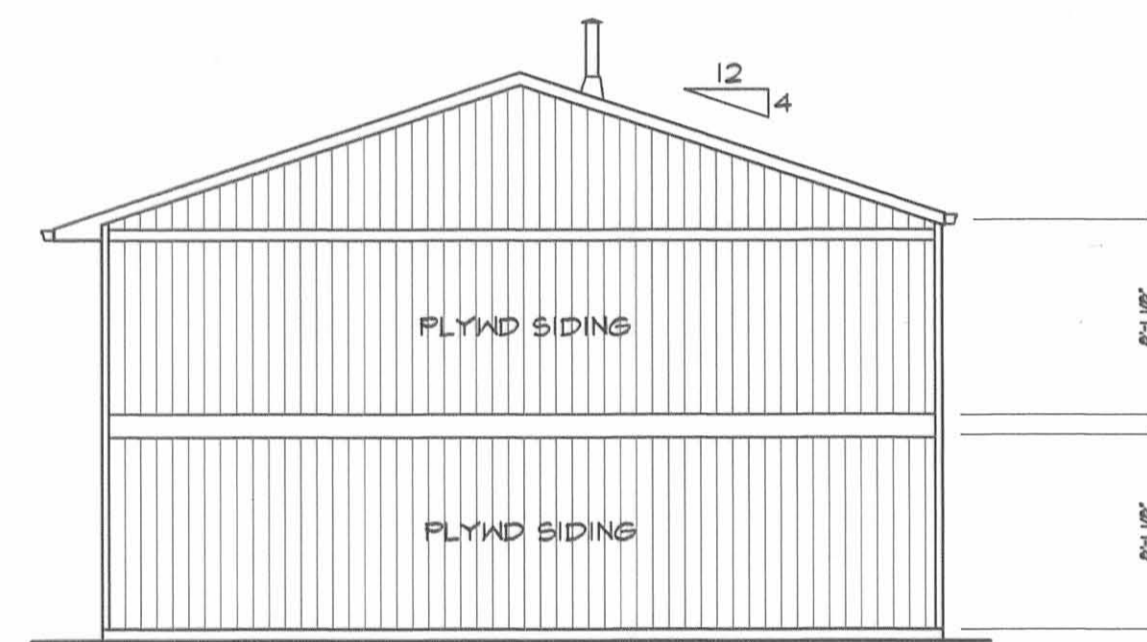
SIDE ELEV RIGHT

SCALE: 1/8" = 1'-0"



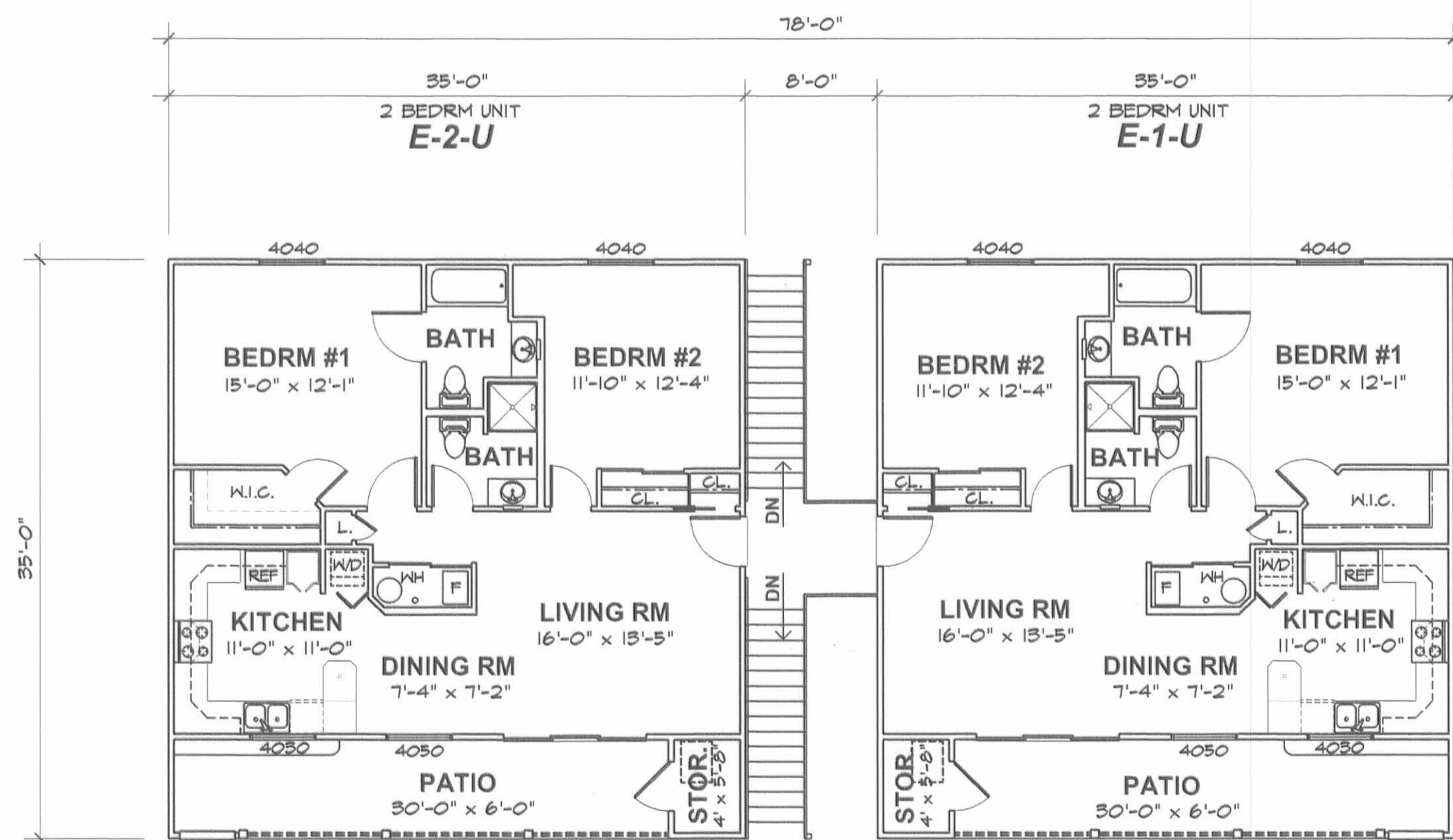
PARKING SIDE ELEVATION REAR

SCALE: 1/8" = 1'-0"



SIDE ELEV LEFT

SCALE: 1/8" = 1'-0"

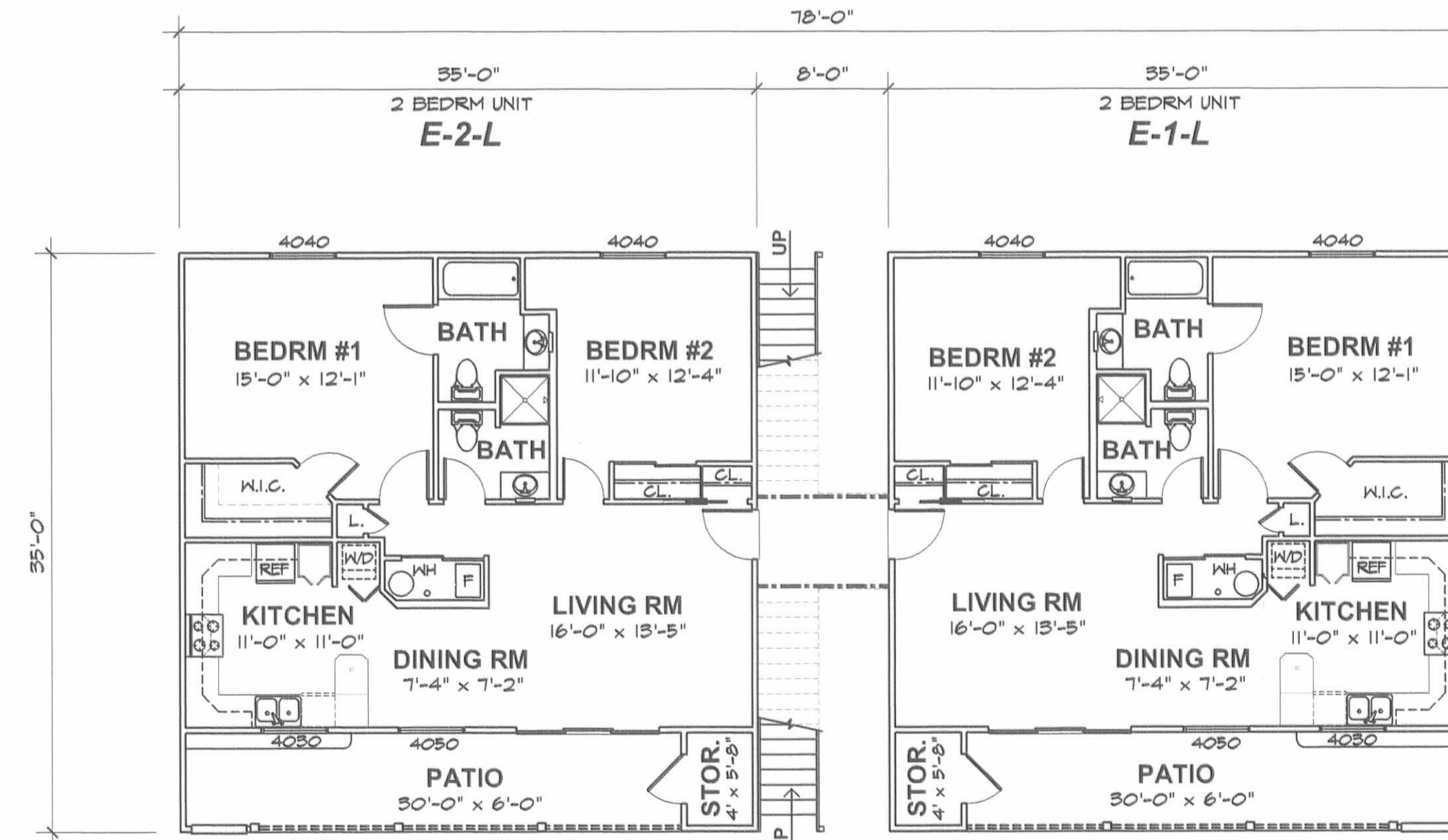


SECOND FLOOR PLAN

SCALE: 1/8" = 1'-0"

UNIT DESIGNATION DESCRIPTION:

E-1-U = BUILDING "E"
 CONDO #1
 UPPER LEVEL



FIRST FLOOR PLAN

SCALE: 1/8" = 1'-0"

UNIT DESIGNATION DESCRIPTION:

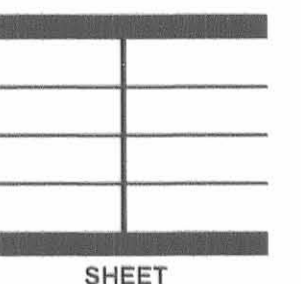
E-1-L = BUILDING "E"
 CONDO #1
 LOWER LEVEL

THE M & K ENGINEERING CO.

322 East Main St. P.O. Box 1457
 Russells Point, Ohio 43348

FAX: 937.842.2697

NEW BUILDING "E" FOR:
 HARBOURSIDE ON THE LAGOON
 RUSSELLS POINT, OHIO



SHEET

2

2 OF 3

Receipt 7-9-02 OK

Lee Surveying and Mapping Co., Inc.

Land Surveys • Topography • Subdivisions • Construction Layout

117 N. Madriver St.
Bellefontaine OH 43311



Phone: (937) 593-7335
Fax: (937) 593-7444

HARBOURSIDE ON THE LAGOON CONDOMINIUMS ADDITIONAL PROPERTY 0.016 ACRE EXHIBIT A-2

Lying in the Village of Russells Point, Section 36, Town 6, Range 8, Washington Township, Logan County, Ohio.

Being all of the Harbourside L.T.D. 0.016 acre tract as deeded and described in Official Record 494, Page 861 of the Logan County Records of Deeds and being more particularly described as follows:

Beginning at a 5/8 inch iron rod set on the northwest corner of the remainder of the Indian Lake Harbourside Limited Partnership, an Ohio Limited Partnership, 7.424 acre tract (O.R. 23, Pg. 93) and on the southwest corner of the American Society of Ephesus, Inc., an Ohio Non-Profit Corporation, 0.234 acre tract (O.R. 290, Pg. 243).

THENCE, with the lines of the said 7.424 acre tract, the following two (2) courses:

S 29°-42'-13" W, a distance of 87.70 feet to a 5/8 inch iron rod set.

S 25°-30'-13" W, a distance of 65.59 feet to a chiseled "X" in concrete set in the sea wall.

THENCE, with the concrete sea wall, N 10°-09'-38" E, a distance of 23.67 feet to a MAG nail set.

THENCE, continuing with the concrete sea wall, N 28°-51'-49" E, a distance of 116.03 feet to a 5/8 inch iron rod set.

THENCE, continuing with the concrete sea wall, N 20°-08'-02" E, a distance of 4.13 feet to a chiseled "X" in concrete set.

THENCE, with the northeasterly line of the said 7.424 acre tract extended, S 61°-43'-13" E, a distance of 6.28 feet to the point of beginning.

Containing 0.016 acre.

The basis for bearings is the northeasterly line of Harbourside on the Lagoon Condominiums, being N 48°-29'-47" W, and all other bearings are from angles and distances measured in a field survey by Lee Surveying and Mapping Co., Inc. on January 4, 2000.

Description prepared by:



ORIGINAL STAMP IN GREEN

A handwritten signature in black ink, appearing to read 'J. Lee', written over the typed name and title.
Jeffrey I. Lee
Professional Surveyor 6359
January 10, 2000

L-1134

JUNE 1986

The following described real estate situated in the State of Ohio, County of Logan, being part of Section 36, Town 6 south, Range 8 east in the Village of Russells Point and more particularly described as follows: WASHINGTON TWP.

Beginning at an Iron Bar in the west line of Chase Avenue at the southeast corner of Schuler Marina, Inc. 's 2.94 acre tract as described in D. B. Vol 319 Page 328.

Thence with said west line S. 23 39' 34" W. 807.00 feet to an Iron Bar.

Thence N. 56 20' 26" W. 281.983 feet to an Iron Bar.

Thence N. 33 39' 34" E. 102.00 feet to an Iron Bar.

Thence N. 56 20' 26" W. 50.868 feet to the shoreline of a channel to Indian Lake.

Thence with said shoreline the following seven (7) courses:

- N. 10 57' 21" E. 67.636 feet
- N. 16 32' 08" E. 81.84 feet
- N. 00 38' 50" W. 200.91 feet
- N. 13 21' 13" E. 216.21 feet
- N. 25 30' 13" E. 65.59 feet
- N. 29 42' 13" E. 100.07 feet
- N. 12 07' 13" E. 6.612 feet to a point.

Thence S. 56 20' 26" E. 83.514 feet to an Iron Bar.

Thence N. 39 33' 13" E. 86.692 feet to an Iron Bar in the south line of the American Society of Ephesus, Inc.'s 0.57 acre tract as described in D.B. Vol. 350 Page 325.

Thence with said south line and the south line of said Schuler Marina tract S. 50 26' 47" E. 140.02 feet to an Iron Bar, passing an Iron Bar at the southeast corner of said .57 acre tract at 39.02 feet.

Thence with the south line of said Schuler Tract S. 50 25' 47" E. 3.00 feet to an Iron Bar

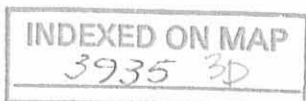
Thence with the south line of said Schuler Tract S. 42 02' 13" W. 29.14 feet to an Iron Bar

Thence with the south line of said Schuler Tract S. 48 29' 47" E. 221.46 feet to the place of beginning.

Containing 7.424 acres more or less.

The above described 7.424 acre tract being on the North side of The Phoenix Groups 9.57 acre tract as described in O.R. Vol _____ Page _____ and is the result of a field survey.

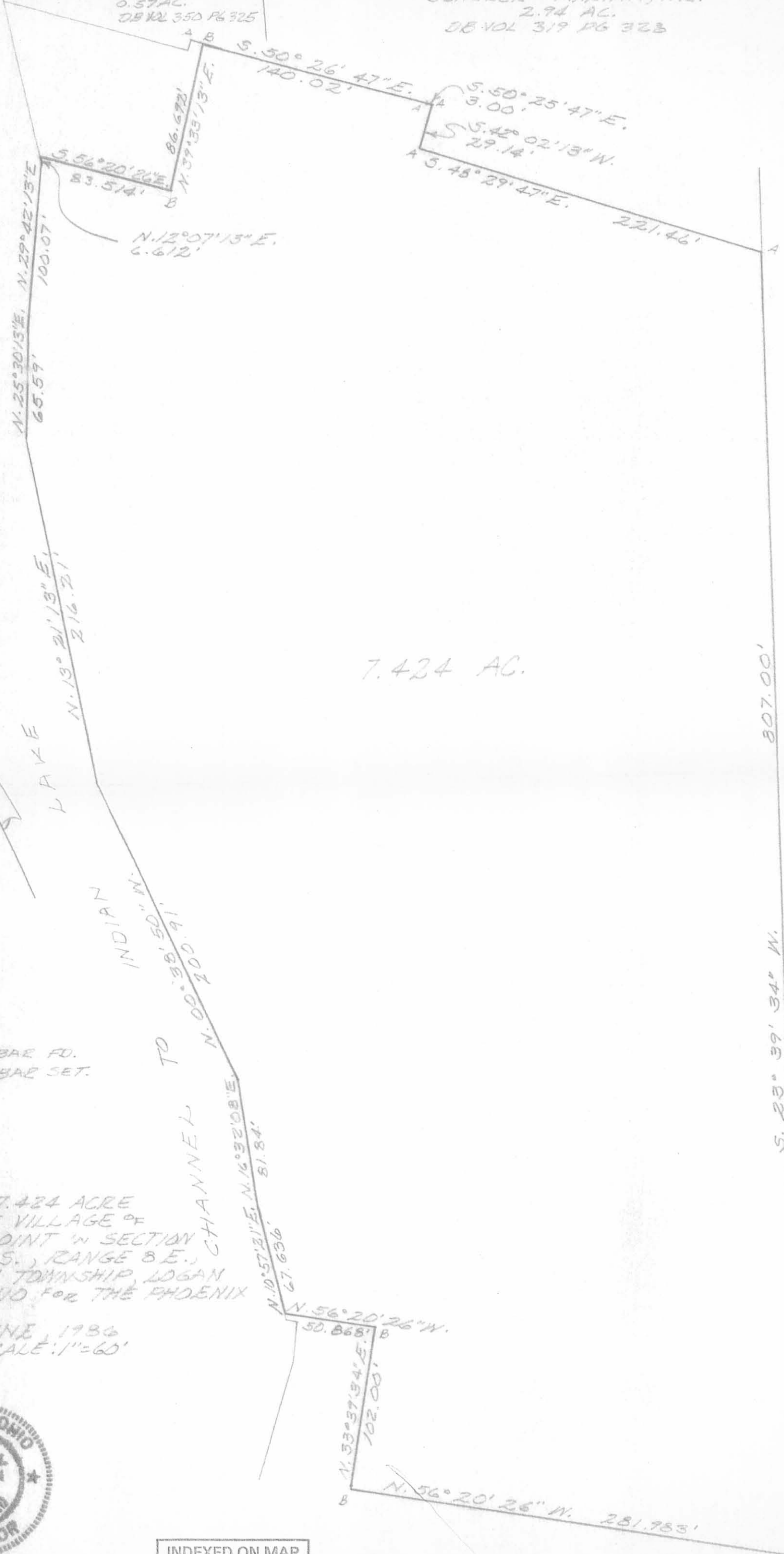
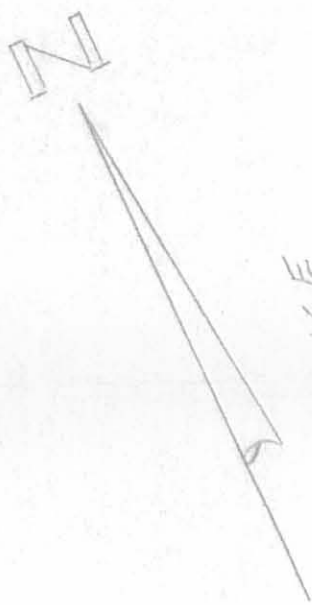
Reference is hereby made to a plat of this survey on file with the Logan County Engineer.



Leslie H. Geeslin

AMERICAN SOCIETY
OF EPHEMUS, INC.
0.57 AC.
DB VOL 350 PG 325

SCHULER MARINA, INC.
2.94 AC.
DB VOL 319 PG 323



LEGEND:
A = 3/8" IRON BAR FD.
B = 5/8" IRON BAR SET.

SURVEY OF 7.424 ACRE TRACT IN THE VILLAGE OF RUSSELLS POINT IN SECTION 36, TOWN 6 S., RANGE 8 E., WASHINGTON TOWNSHIP, LOGAN COUNTY, OHIO FOR THE PHOENIX GROUP.

JUNE, 1986
SCALE: 1" = 60'



Leslie H. Geeslin
LESLIE M. GEESLIN
RUSHSVANIA, OHIO

INDEXED ON MAP
3935 3P

BEARING BASIS