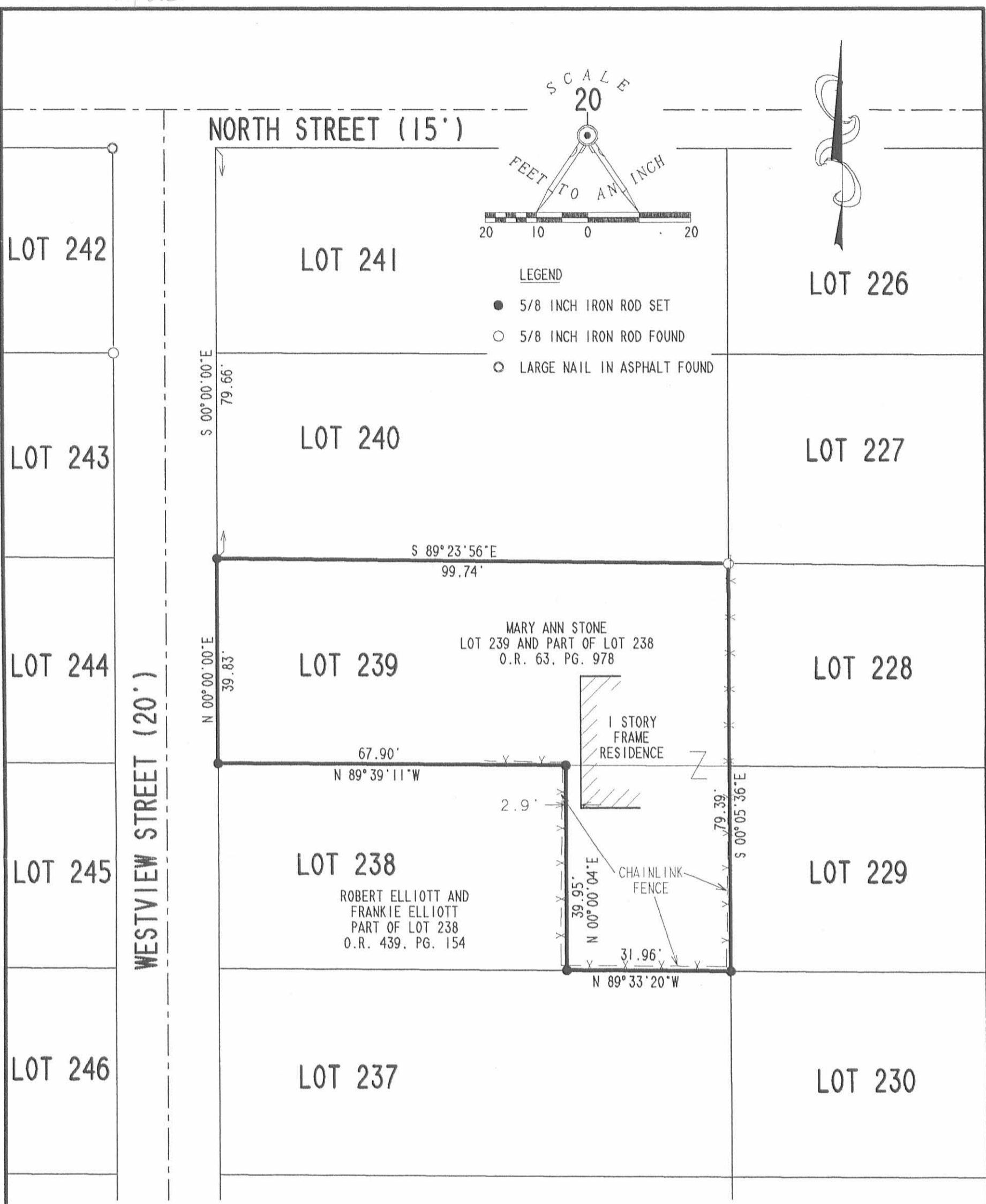


Rd 9-5-01 SMY OLL



RETRACEMENT SURVEY OF
 LOT 239 AND PART OF LOT 238
 OF PRATERS SUBDIVISION
 PLAT CABINET A. SLIDE 178
 SECTION 35. TOWN 6. RANGE 8
 VILLAGE OF RUSSELLS POINT
 WASHINGTON TOWNSHIP
 LOGAN COUNTY, OHIO

2 WORKING DAYS
BEFORE YOU DIG
 CALL TOLL FREE **800-362-2764**
 OHIO UTILITIES PROTECTION SERVICE.



ORIGINAL STAMP IN GREEN

SURVEYED BY:

 JEFFREY I. LEE
 PROFESSIONAL SURVEYOR 6359
 AUGUST 29, 2001

COPYRIGHT 2001 BY:
LEE SURVEYING & MAPPING CO., INC.
 117 North Madriver Street
 BELLEFONTAINE, OHIO 43311
 (937) 593-7335

INDEXED ON MAP
 9377 IP

D 403 MASTNE L-3225-3